

DALINE-10-W

~40° wide beam

SPECIFICATION:

Dimensions	139.5 x 9.4 mm
Height	5.3 mm
ROHS compliant	yes ⓘ

MATERIALS:

Component	Type	Material	Colour	Finish	Length
C19329_DALINE-10-W	Linear lens	PMMA	clear		139.5
C19620_DALINE-10-SHD2-WHT-MATT	Shade	PC	white	matt	279.5
C19618_DALINE-10-SHD2-MATT	Shade	PC	black	matt	279.5
C19509_DALINE-10-SHD1-WHT-MATT	Shade	PC	white	matt	279.5
C19333_DALINE-10-SHD1-MATT	Shade	PC	black	matt	279.5

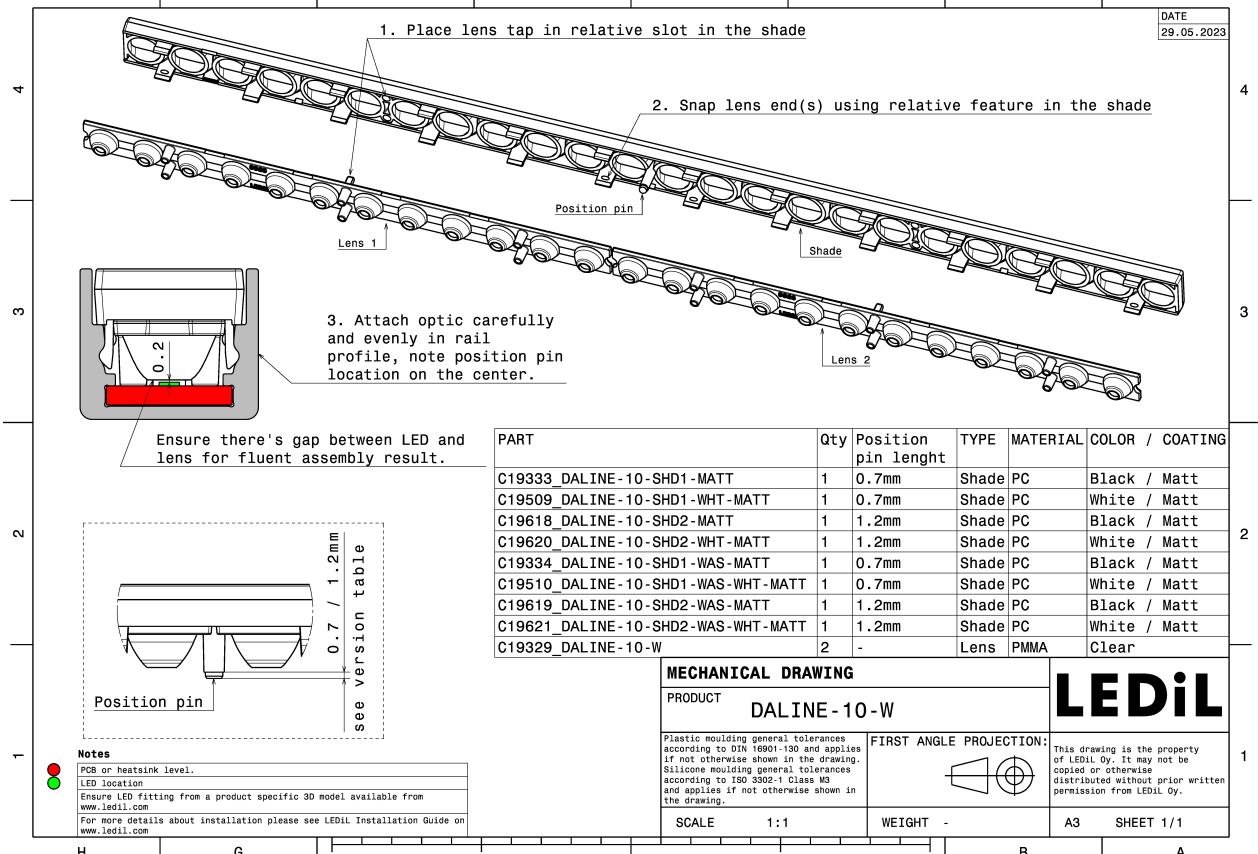
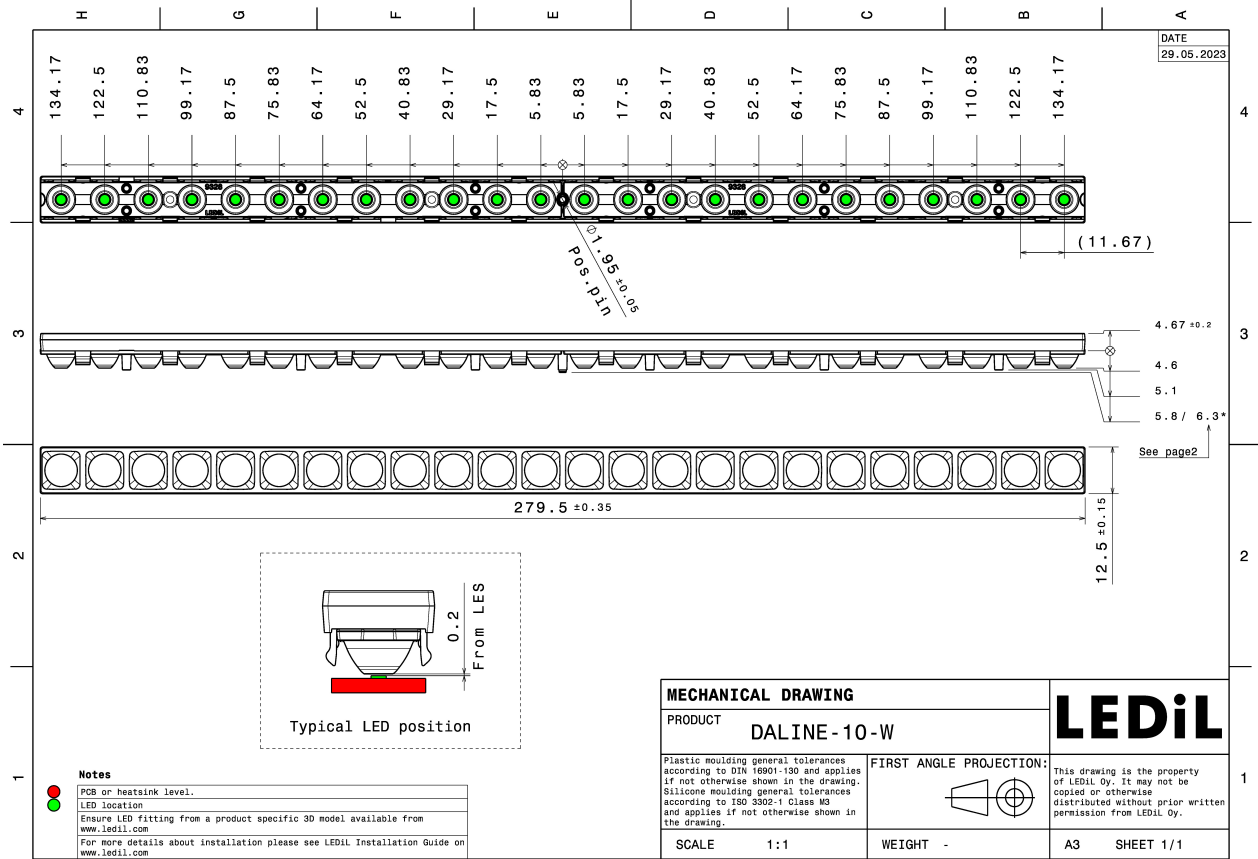
ORDERING INFORMATION:

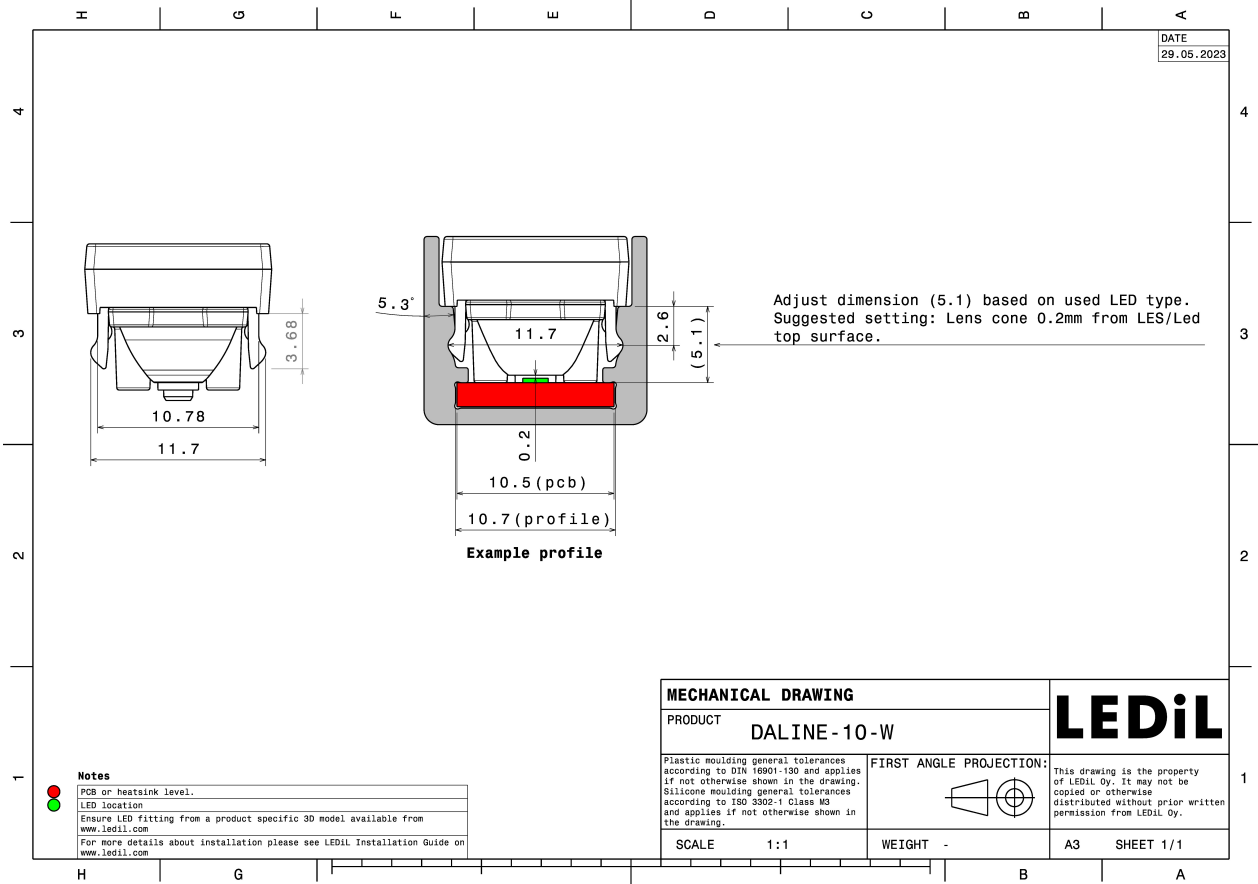
Quantities for one set:

Linear lens	2
Shade	1



Component		Qty in box	MOQ	MPQ	Box weight (kg)
C19329_DALINE-10-W » Box size: 480 x 280 x 300 mm	Linear lens	1560	52	52	8.0
C19620_DALINE-10-SHD2-WHT-MATT » Box size: 400 x 300 x 300 mm	Shade	390	26	26	6.1
C19333_DALINE-10-SHD1-MATT » Box size: 400 x 300 x 300 mm	Shade	390	26	26	5.9
C19509_DALINE-10-SHD1-WHT-MATT » Box size: 400 x 300 x 300 mm	Shade	390	26	26	6.0
C19618_DALINE-10-SHD2-MATT » Box size: 400 x 300 x 300 mm	Shade	390	26	26	6.0



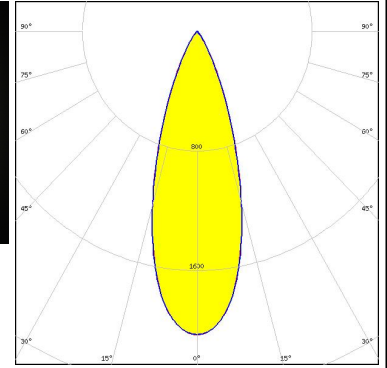
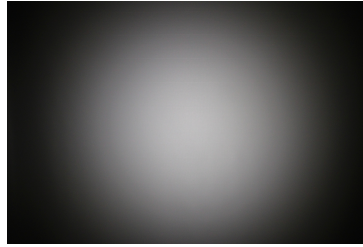


See also our general installation guide: www.ledil.com/installation_guide

OPTICAL RESULTS (MEASURED):

SAMSUNG

LED LM101B
FWHM / FWTM 34.0° / 60.0°
Efficiency 78 %
Peak intensity 2 cd/lm
LEDs/each optic 1
Light colour/type White
Required components:
C19618_DALINE-10-SHD2-MATT

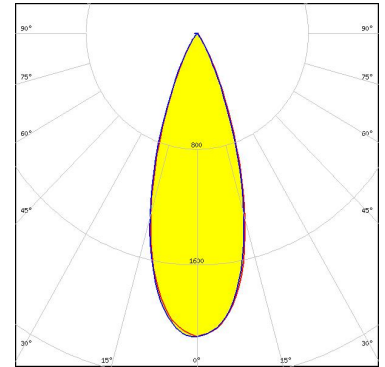


Light distribution files

OPTICAL RESULTS (SIMULATED):



LED XQ-E HI
FWHM / FWTM 35.0° / 58.0°
Efficiency 80 %
Peak intensity 2.1 cd/lm
LEDs/each optic 1
Light colour/type White
Required components:
C19618_DALINE-10-SHD2-MATT



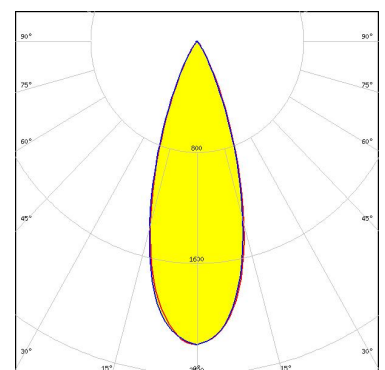
Light distribution files



LED LUXEON 2835 Line
FWHM / FWTM 36.0° / 66.0°
Efficiency 77 %
Peak intensity 1.7 cd/lm
LEDs/each optic 1
Light colour/type White
Required components:
C19618_DALINE-10-SHD2-MATT



LED LUXEON CSP HL1
FWHM / FWTM 35.0° / 59.0°
Efficiency 84 %
Peak intensity 2.2 cd/lm
LEDs/each optic 1
Light colour/type White
Required components:
C19333_DALINE-10-SHD1-MATT

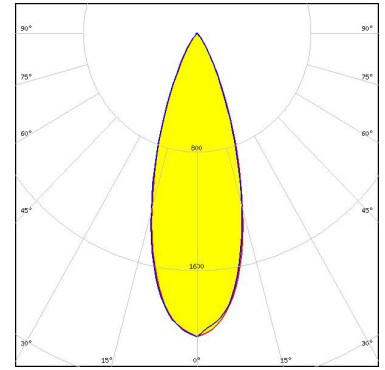


Light distribution files

OPTICAL RESULTS (SIMULATED):



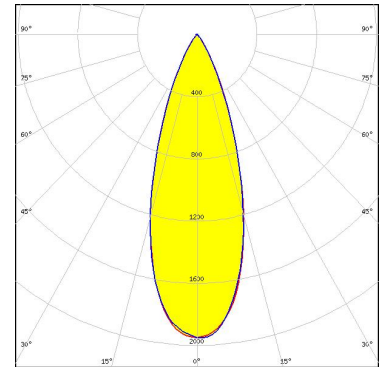
LED LUXEON Z ES
FWHM / FWTM 35.0° / 60.0°
Efficiency 81 %
Peak intensity 2.1 cd/lm
LEDs/each optic 1
Light colour/type White
Required components:
C19618_DALINE-10-SHD2-MATT



Light distribution files



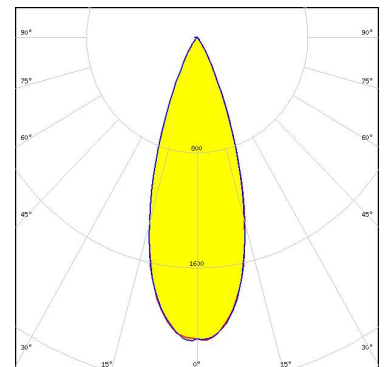
LED NCSxE17A
FWHM / FWTM 35.0° / 61.0°
Efficiency 79 %
Peak intensity 2 cd/lm
LEDs/each optic 1
Light colour/type White
Required components:
C19333_DALINE-10-SHD1-MATT



Light distribution files



LED NFSWE11A
FWHM / FWTM 35.0° / 58.0°
Efficiency 80 %
Peak intensity 2.1 cd/lm
LEDs/each optic 1
Light colour/type White
Required components:
C19333_DALINE-10-SHD1-MATT

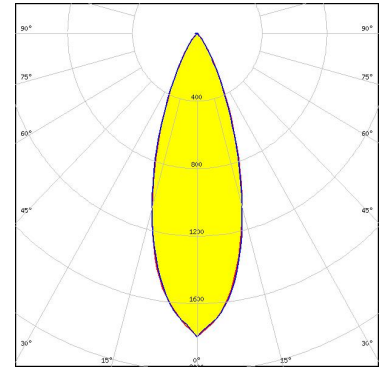


Light distribution files

OPTICAL RESULTS (SIMULATED):



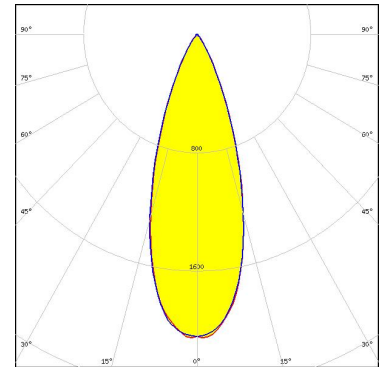
LED NVSxE21A
FWHM / FWTM 35.0° / 63.0°
Efficiency 75 %
Peak intensity 1.8 cd/lm
LEDs/each optic 1
Light colour/type White
Required components:
C19333_DALINE-10-SHD1-MATT



Light distribution files



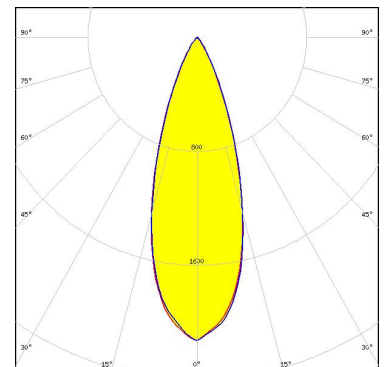
LED LH151B
FWHM / FWTM 35.0° / 61.0°
Efficiency 82 %
Peak intensity 2 cd/lm
LEDs/each optic 1
Light colour/type White
Required components:
C19333_DALINE-10-SHD1-MATT



Light distribution files



LED LH151B
FWHM / FWTM 35.0° / 60.0°
Efficiency 85 %
Peak intensity 2.1 cd/lm
LEDs/each optic 1
Light colour/type White
Required components:
C19509_DALINE-10-SHD1-WHT-MATT



Light distribution files

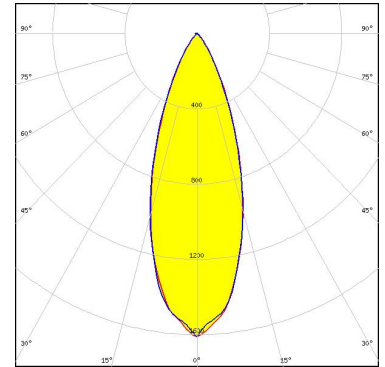
OPTICAL RESULTS (SIMULATED):

SAMSUNG

LED LH181B
FWHM / FWTM 36.0° / 66.0°
Efficiency 72 %
Peak intensity 1.7 cd/lm
LEDs/each optic 1
Light colour/type White

Required components:

C19333_DALINE-10-SHD1-MATT



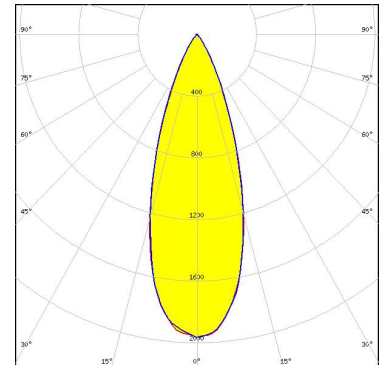
Light distribution files

SAMSUNG

LED LM101B
FWHM / FWTM 35.0° / 62.0°
Efficiency 80 %
Peak intensity 2 cd/lm
LEDs/each optic 1
Light colour/type White

Required components:

C19333_DALINE-10-SHD1-MATT



Light distribution files

SAMSUNG

LED LM28xB Series
FWHM / FWTM 36.0° / 66.0°
Efficiency 73 %
Peak intensity 1.6 cd/lm
LEDs/each optic 1
Light colour/type White

Required components:

C19618_DALINE-10-SHD2-MATT

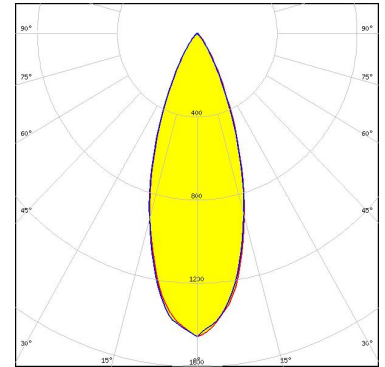
OPTICAL RESULTS (SIMULATED):

SAMSUNG

LED LM301B
FWHM / FWTM 36.0° / 65.0°
Efficiency 66 %
Peak intensity 1.5 cd/lm
LEDs/each optic 1
Light colour/type White

Required components:

C19618_DALINE-10-SHD2-MATT



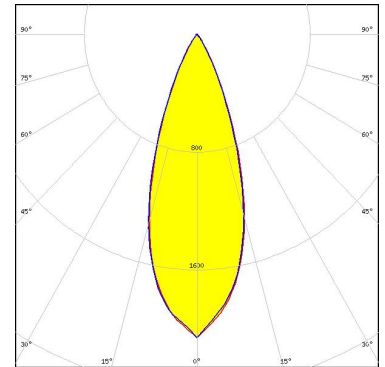
Light distribution files

LEDiL[®]

LED CSP1111
FWHM / FWTM 36.0° / 60.0°
Efficiency 82 %
Peak intensity 2.1 cd/lm
LEDs/each optic 1
Light colour/type White

Required components:

C19333_DALINE-10-SHD1-MATT



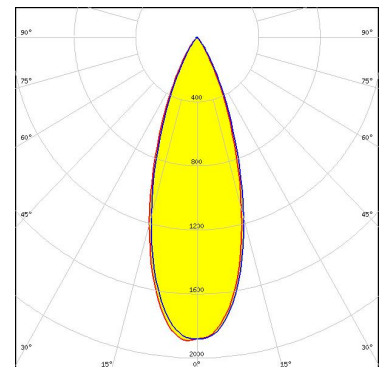
Light distribution files

LEDiL[®]

LED CSP1919
FWHM / FWTM 35.0° / 64.0°
Efficiency 78 %
Peak intensity 1.9 cd/lm
LEDs/each optic 1
Light colour/type White

Required components:

C19333_DALINE-10-SHD1-MATT



Light distribution files

GENERAL INFORMATION:

NOTE: The typical beam angle will be changed by different color, chip size and chip position tolerance. The typical total beam angle is the full angle measured where the luminous intensity is half of the peak value.

MATERIALS:

As part of our continuous research and improvement processes, and to ensure the best possible quality and availability of our products, LEDiL reserves the right to change material grades without notice.

PRODUCT DATA USER AGREEMENT AND DISCLAIMER:

The measured data in the provided downloadable LEDiL Product Datasheets and Mechanical 2D-Drawings is rounded and provided as reference for planning. LEDiL Oy's optical specifications have been verified by conducting performance testing of the products in accordance with the company's quality system. The reported data are averaged results of multiple measurements with typical variation. LEDiL Oy reserves the right to without prior notification make changes and improvements to its products.

LEDiL Oy assumes neither warranty, nor guarantee nor any other liability of any kind for the contents and correctness of the provided data. The provided data has been generated with highest diligence but the provided data may in reality not represent the complete possible variation range of all intrinsic parameters. Therefore, in certain cases a deviation from the provided data could occur.

LEDiL Oy reserves the right to undertake technical changes of its products without further notification which could lead to changes in the provided data. LEDiL Oy assumes no liability of any kind for the possible deviation from any provided data or any other damage resulting from the usage of the provided data.

The user agrees to this disclaimer and user agreement with the download or usage of the provided files.

LEDiL Oy

Joensuunkatu 13
FI-24240 SALO
Finland

LEDiL Inc.

228 West Page Street
Suite D
Sycamore IL 60178
USA

Ledil Optics Technology (Shenzhen) Co., Ltd.

405 , Block B
Casic Motor Building
Shenzhen 518057
P.R.CHINA

Local sales and technical support

[www.ledil.com/
where_to_buy](http://www.ledil.com/where_to_buy)

Shipping locations

Poznan, Poland
Hong Kong, China

Distribution Partners

[www.ledil.com/
where_to_buy](http://www.ledil.com/where_to_buy)