

### DALINE-10-O

~25 + 60° oval beam

#### SPECIFICATION:

Dimensions	279.5 x 12.5 mm
Height	9.8 mm
ROHS compliant	yes ⓘ

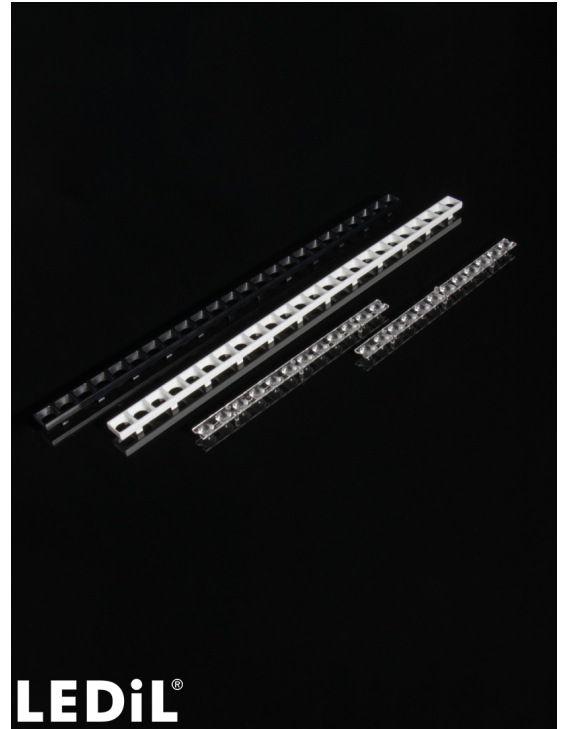
#### MATERIALS:

Component	Type	Material	Colour	Finish	Length
C19330_DALINE-10-O	Linear lens	PMMA	clear		139.5
C19620_DALINE-10-SHD2-WHT-MATT	Shade	PC	white	matt	279.5
C19618_DALINE-10-SHD2-MATT	Shade	PC	black	matt	279.5
C19509_DALINE-10-SHD1-WHT-MATT	Shade	PC	white	matt	279.5
C19333_DALINE-10-SHD1-MATT	Shade	PC	black	matt	279.5

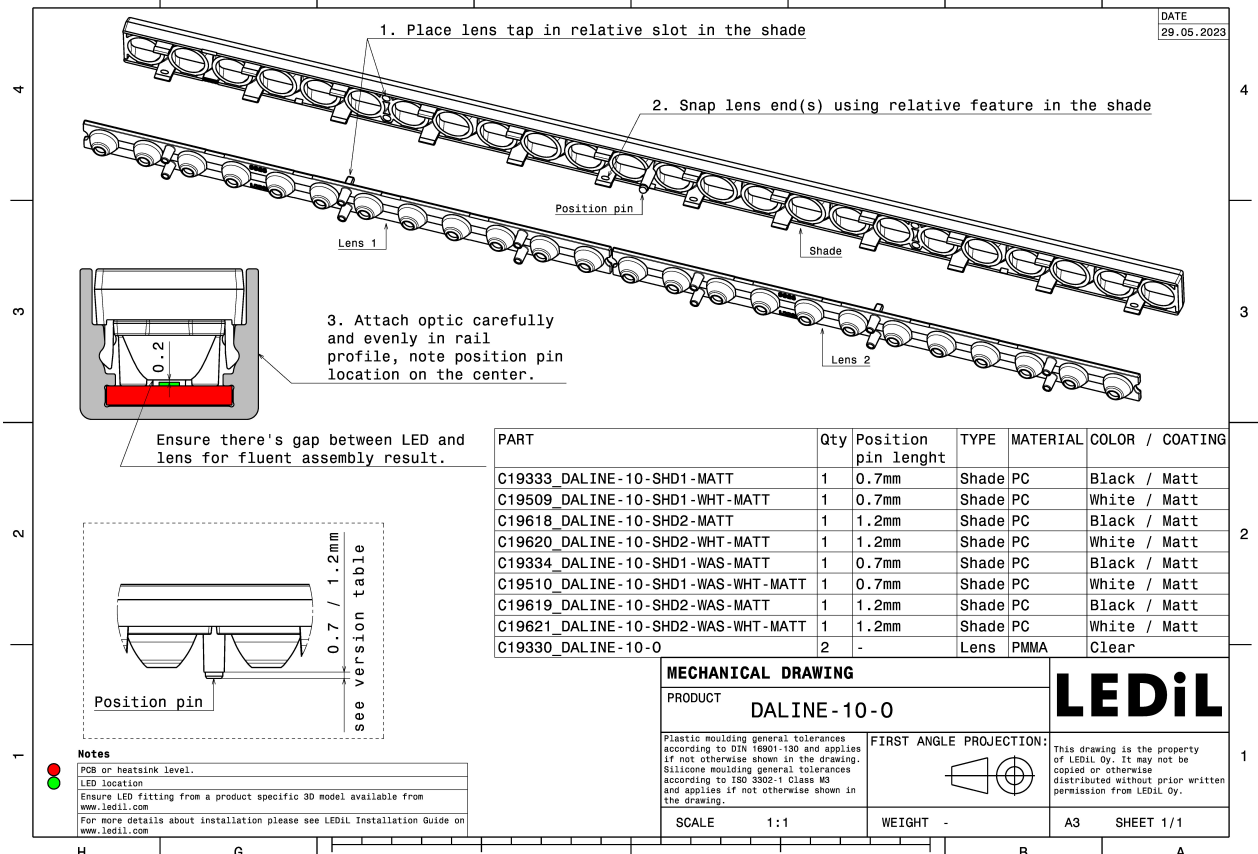
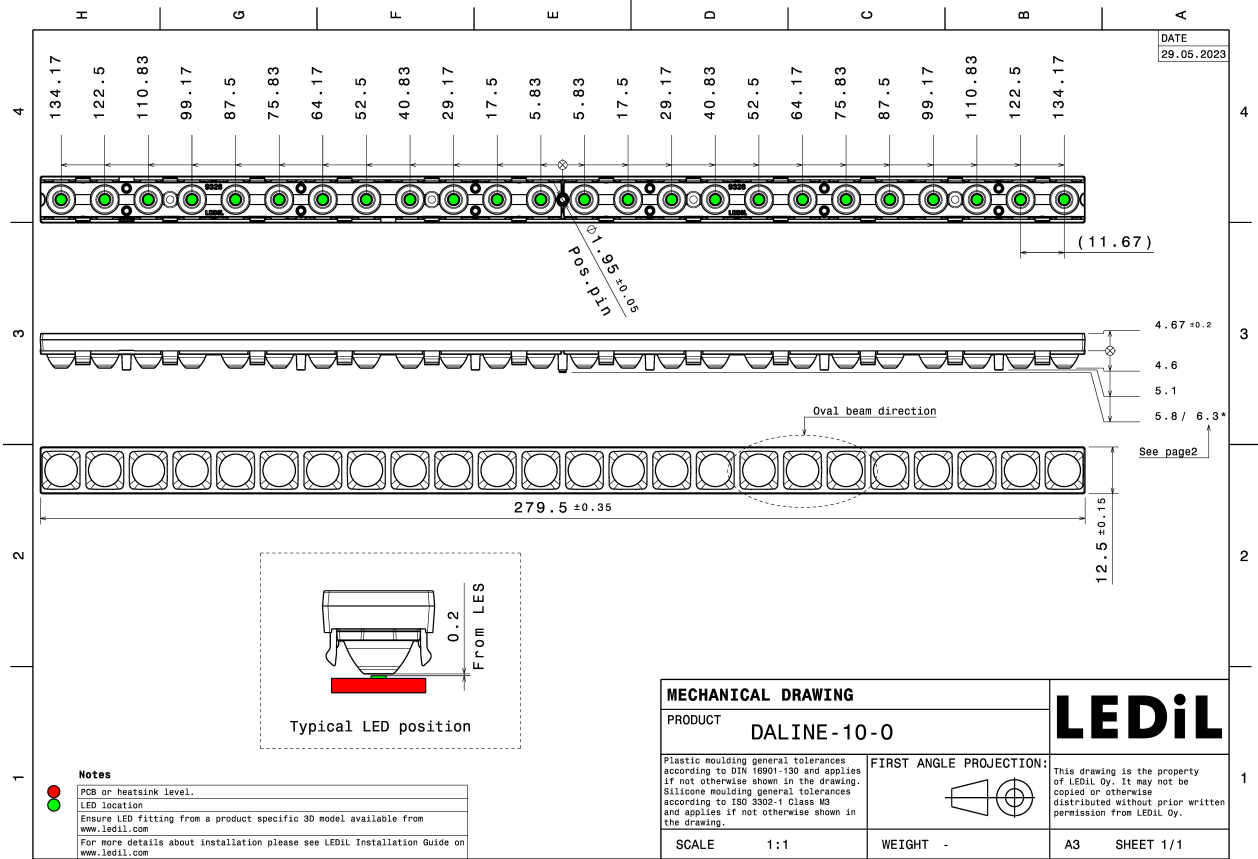
#### ORDERING INFORMATION:

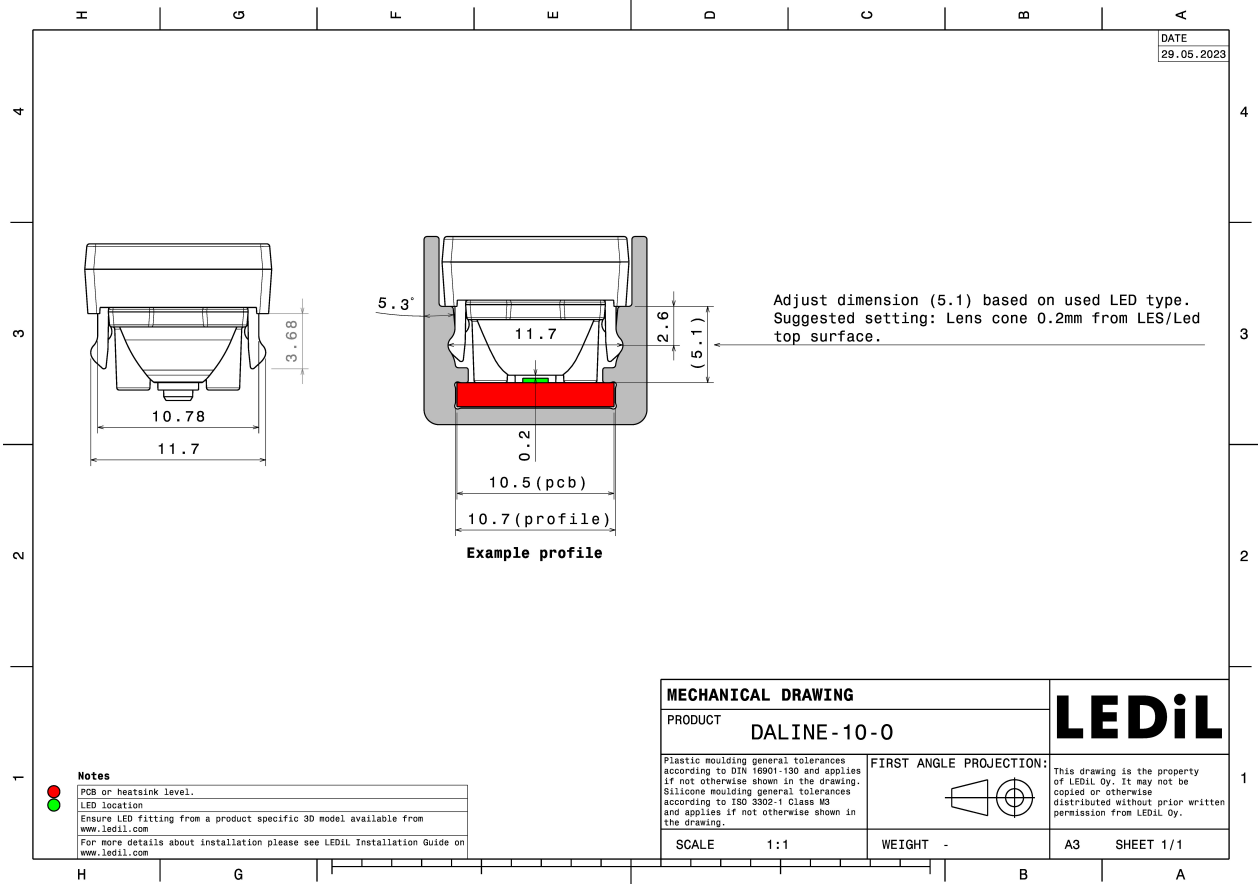
##### Quantities for one set:

Linear lens	2
Shade	1



Component		Qty in box	MOQ	MPQ	Box weight (kg)
C19330_DALINE-10-O	Linear lens	1560	52	52	7.9
» Box size: 480 x 280 x 300 mm					
C19620_DALINE-10-SHD2-WHT-MATT	Shade	390	26	26	6.1
» Box size: 400 x 300 x 300 mm					
C19333_DALINE-10-SHD1-MATT	Shade	390	26	26	5.9
» Box size: 400 x 300 x 300 mm					
C19509_DALINE-10-SHD1-WHT-MATT	Shade	390	26	26	6.0
» Box size: 400 x 300 x 300 mm					
C19618_DALINE-10-SHD2-MATT	Shade	390	26	26	6.0
» Box size: 400 x 300 x 300 mm					



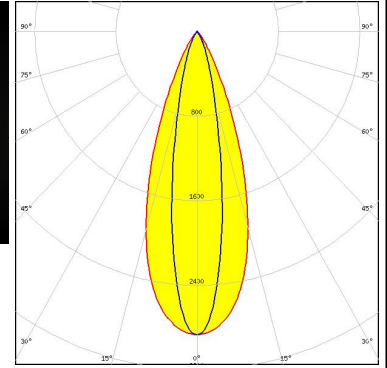


See also our general installation guide: [www.ledil.com/installation\\_guide](http://www.ledil.com/installation_guide)

### OPTICAL RESULTS (MEASURED):

#### SAMSUNG

LED LM101B  
FWHM / FWTM 38.0 + 20.0° / 63.0 + 43.0°  
Efficiency 81 %  
Peak intensity 2.9 cd/lm  
LEDs/each optic 1  
Light colour/type White  
Required components:  
C19333\_DALINE-10-SHD1-MATT

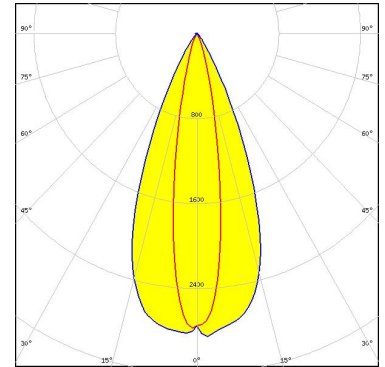


Light distribution files

### OPTICAL RESULTS (SIMULATED):



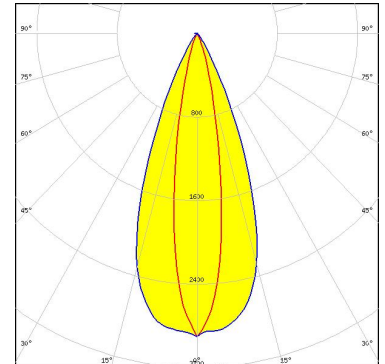
LED CSP 1111 (BXCP)  
FWHM / FWTM 44.0 + 19.0°  
Efficiency 82 %  
Peak intensity 2.8 cd/lm  
LEDs/each optic 1  
Light colour/type White  
Required components:  
C19333\_DALINE-10-SHD1-MATT



Light distribution files



LED XQ-E HI  
FWHM / FWTM 42.0 + 19.0°  
Efficiency 80 %  
Peak intensity 2.9 cd/lm  
LEDs/each optic 1  
Light colour/type White  
Required components:  
C19618\_DALINE-10-SHD2-MATT



Light distribution files



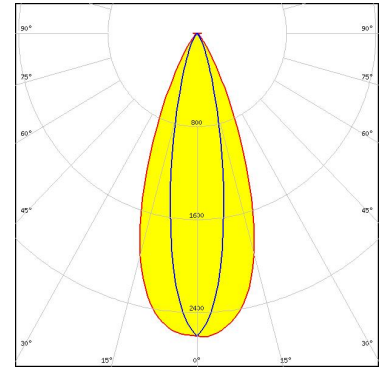
LED LUXEON 2835 Line  
FWHM / FWTM 40.0 + 26.0° / 69.0 + 56.0°  
Efficiency 78 %  
Peak intensity 2 cd/lm  
LEDs/each optic 1  
Light colour/type White  
Required components:  
C19618\_DALINE-10-SHD2-MATT

### OPTICAL RESULTS (SIMULATED):



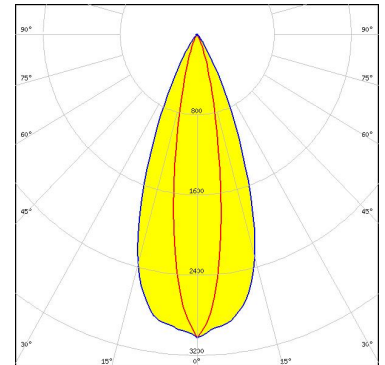
LED LUXEON 3014  
FWHM / FWTM 42.0 + 20.0° / 66.0 + 44.0°  
Efficiency 86 %  
Peak intensity 2.6 cd/lm  
LEDs/each optic 1  
Light colour/type White

Required components:  
C19333\_DALINE-10-SHD1-MATT



LED LUXEON CSP HL1  
FWHM / FWTM 41.0 + 19.0°  
Efficiency 84 %  
Peak intensity 3 cd/lm  
LEDs/each optic 1  
Light colour/type White

Required components:  
C19333\_DALINE-10-SHD1-MATT

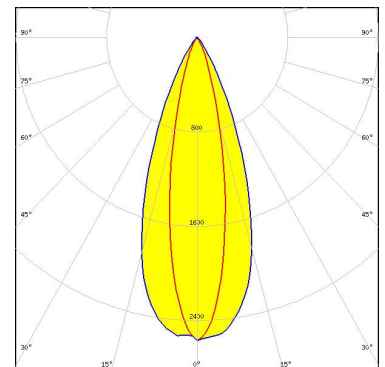


Light distribution files



LED LUXEON Z ES  
FWHM / FWTM 40.0 + 22.0°  
Efficiency 81 %  
Peak intensity 2.6 cd/lm  
LEDs/each optic 1  
Light colour/type White

Required components:  
C19618\_DALINE-10-SHD2-MATT



Light distribution files

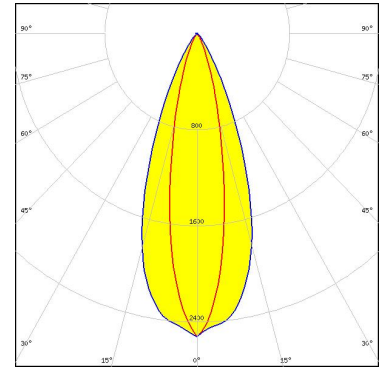
### OPTICAL RESULTS (SIMULATED):



LED NCSxE17A  
FWHM / FWTM 40.0 + 21.0°  
Efficiency 79 %  
Peak intensity 2.5 cd/lm  
LEDs/each optic 1  
Light colour/type White

Required components:

C19333\_DALINE-10-SHD1-MATT



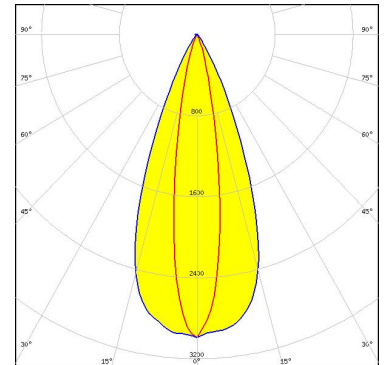
Light distribution files



LED NFSWE11A  
FWHM / FWTM 42.0 + 18.0°  
Efficiency 80 %  
Peak intensity 3 cd/lm  
LEDs/each optic 1  
Light colour/type White

Required components:

C19333\_DALINE-10-SHD1-MATT



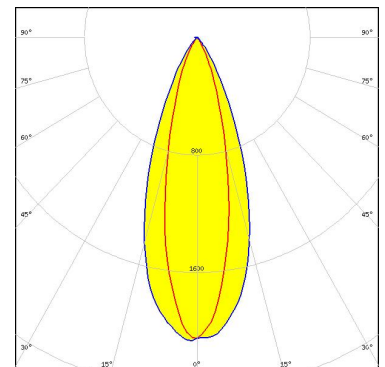
Light distribution files



LED NVSxE21A  
FWHM / FWTM 40.0 + 25.0°  
Efficiency 75 %  
Peak intensity 2 cd/lm  
LEDs/each optic 1  
Light colour/type White

Required components:

C19333\_DALINE-10-SHD1-MATT



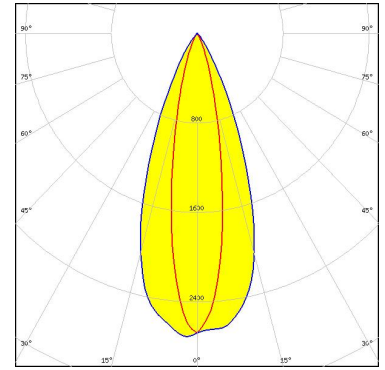
Light distribution files



### OPTICAL RESULTS (SIMULATED):

#### SAMSUNG

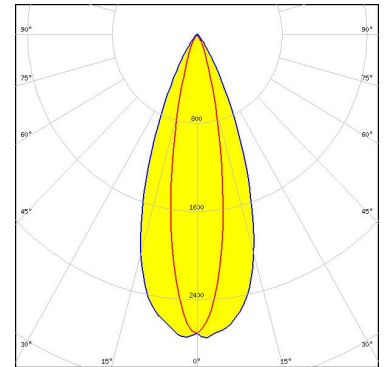
LED LH151B  
FWHM / FWTM 40.0 + 20.0°  
Efficiency 82 %  
Peak intensity 2.7 cd/lm  
LEDs/each optic 1  
Light colour/type White  
Required components:  
C19333\_DALINE-10-SHD1-MATT



Light distribution files

#### SAMSUNG

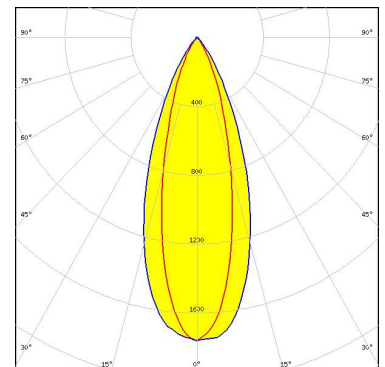
LED LH151B  
FWHM / FWTM 40.0 + 20.0°  
Efficiency 85 %  
Peak intensity 2.8 cd/lm  
LEDs/each optic 1  
Light colour/type White  
Required components:  
C19509\_DALINE-10-SHD1-WHT-MATT



Light distribution files

#### SAMSUNG

LED LH181B  
FWHM / FWTM 40.0 + 28.0°  
Efficiency 72 %  
Peak intensity 1.8 cd/lm  
LEDs/each optic 1  
Light colour/type White  
Required components:  
C19333\_DALINE-10-SHD1-MATT



Light distribution files

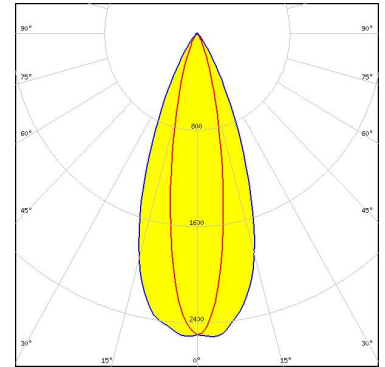
### OPTICAL RESULTS (SIMULATED):

#### SAMSUNG

LED LM101B  
FWHM / FWTM 41.0 + 20.0°  
Efficiency 80 %  
Peak intensity 2.5 cd/lm  
LEDs/each optic 1  
Light colour/type White

Required components:

C19333\_DALINE-10-SHD1-MATT



Light distribution files

#### SAMSUNG

LED LM28xB Series  
FWHM / FWTM 40.0 + 28.0° / 70.0 + 58.0°  
Efficiency 75 %  
Peak intensity 1.8 cd/lm  
LEDs/each optic 1  
Light colour/type White

Required components:

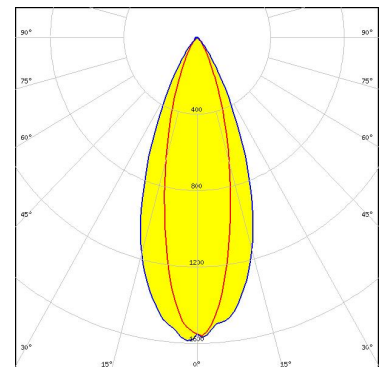
C19618\_DALINE-10-SHD2-MATT

#### SAMSUNG

LED LM301B  
FWHM / FWTM 42.0 + 26.0°  
Efficiency 65 %  
Peak intensity 1.6 cd/lm  
LEDs/each optic 1  
Light colour/type White


Required components:

C19618\_DALINE-10-SHD2-MATT




Light distribution files

### OPTICAL RESULTS (SIMULATED):

 SEOUL SEMICONDUCTOR	
LED	SEOUL 3030
FWHM / FWTM	40.0 + 26.0° / 68.0 + 56.0°
Efficiency	77 %
Peak intensity	1.9 cd/lm
LEDs/each optic	1
Light colour/type	White
Required components: C19618_DALINE-10-SHD2-MATT	

 SEOUL SEMICONDUCTOR	
LED	SEOUL DC 3528
FWHM / FWTM	40.0 + 28.0° / 70.0 + 56.0°
Efficiency	74 %
Peak intensity	1.8 cd/lm
LEDs/each optic	1
Light colour/type	White
Required components: C19618_DALINE-10-SHD2-MATT	

 SEOUL SEMICONDUCTOR	
LED	Z8Y11
FWHM / FWTM	40.0 + 22.0° / 64.0 + 42.0°
Efficiency	69 %
Peak intensity	2.3 cd/lm
LEDs/each optic	1
Light colour/type	White
Required components: C19618_DALINE-10-SHD2-MATT	

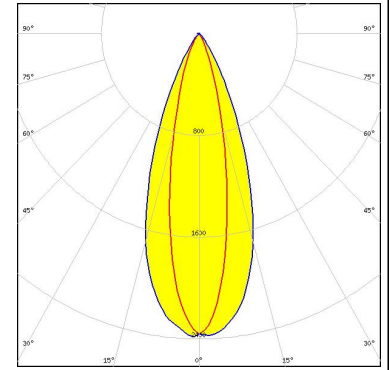
### OPTICAL RESULTS (SIMULATED):

#### LEDiL<sup>®</sup>

LED	CSP1919
FWHM / FWTM	40.0 + 23.0°
Efficiency	78 %
Peak intensity	2.4 cd/lm
LEDs/each optic	1
Light colour/type	White

Required components:

C19333\_DALINE-10-SHD1-MATT



Light distribution files

### GENERAL INFORMATION:

NOTE: The typical beam angle will be changed by different color, chip size and chip position tolerance. The typical total beam angle is the full angle measured where the luminous intensity is half of the peak value.

### MATERIALS:

As part of our continuous research and improvement processes, and to ensure the best possible quality and availability of our products, LEDiL reserves the right to change material grades without notice.

### PRODUCT DATA USER AGREEMENT AND DISCLAIMER:

The measured data in the provided downloadable LEDiL Product Datasheets and Mechanical 2D-Drawings is rounded and provided as reference for planning. LEDiL Oy's optical specifications have been verified by conducting performance testing of the products in accordance with the company's quality system. The reported data are averaged results of multiple measurements with typical variation. LEDiL Oy reserves the right to without prior notification make changes and improvements to its products.

LEDiL Oy assumes neither warranty, nor guarantee nor any other liability of any kind for the contents and correctness of the provided data. The provided data has been generated with highest diligence but the provided data may in reality not represent the complete possible variation range of all intrinsic parameters. Therefore, in certain cases a deviation from the provided data could occur.

LEDiL Oy reserves the right to undertake technical changes of its products without further notification which could lead to changes in the provided data. LEDiL Oy assumes no liability of any kind for the possible deviation from any provided data or any other damage resulting from the usage of the provided data.

The user agrees to this disclaimer and user agreement with the download or usage of the provided files.

#### LEDiL Oy

Joensuunkatu 13  
FI-24240 SALO  
Finland

#### LEDiL Inc.

228 West Page Street  
Suite D  
Sycamore IL 60178  
USA

#### Ledil Optics Technology (Shenzhen) Co., Ltd.

# 405 , Block B  
Casic Motor Building  
Shenzhen 518057  
P.R.CHINA

#### Local sales and technical support

[www.ledil.com/  
where\\_to\\_buy](http://www.ledil.com/where_to_buy)

#### Shipping locations

Poznan, Poland  
Hong Kong, China

#### Distribution Partners

[www.ledil.com/  
where\\_to\\_buy](http://www.ledil.com/where_to_buy)