

PRELIMINARY CZ5 SQUARE SERIES FOR SEOUL Z5 SERIES OF LEDs



- Lens material optical grade PC with high UV and temperature resistance (120°C/248°F). Allows use of high current and temperature conditions.
- Best available optical efficiency, up to 90%, with an extremely good cutoff of light
- Integrated holder. Fastening to heat sink with a PU foam adhesive tape of automotive grade
- We advise customer to ensure the suitability and sufficiency of the bond in the end product. For example, mechanical stress, vibration and holes on the surface of the circuit board weaken the strength of the tape.
- Please check fastening details from this link:
(http://www.ledil.com/datasheets/DataSheet_TAPE.pdf)
- Compact dimensions 21.6 x 21.6 mm. Square form enables easy build of matrix without any gaps between lenses.

LENS TYPES

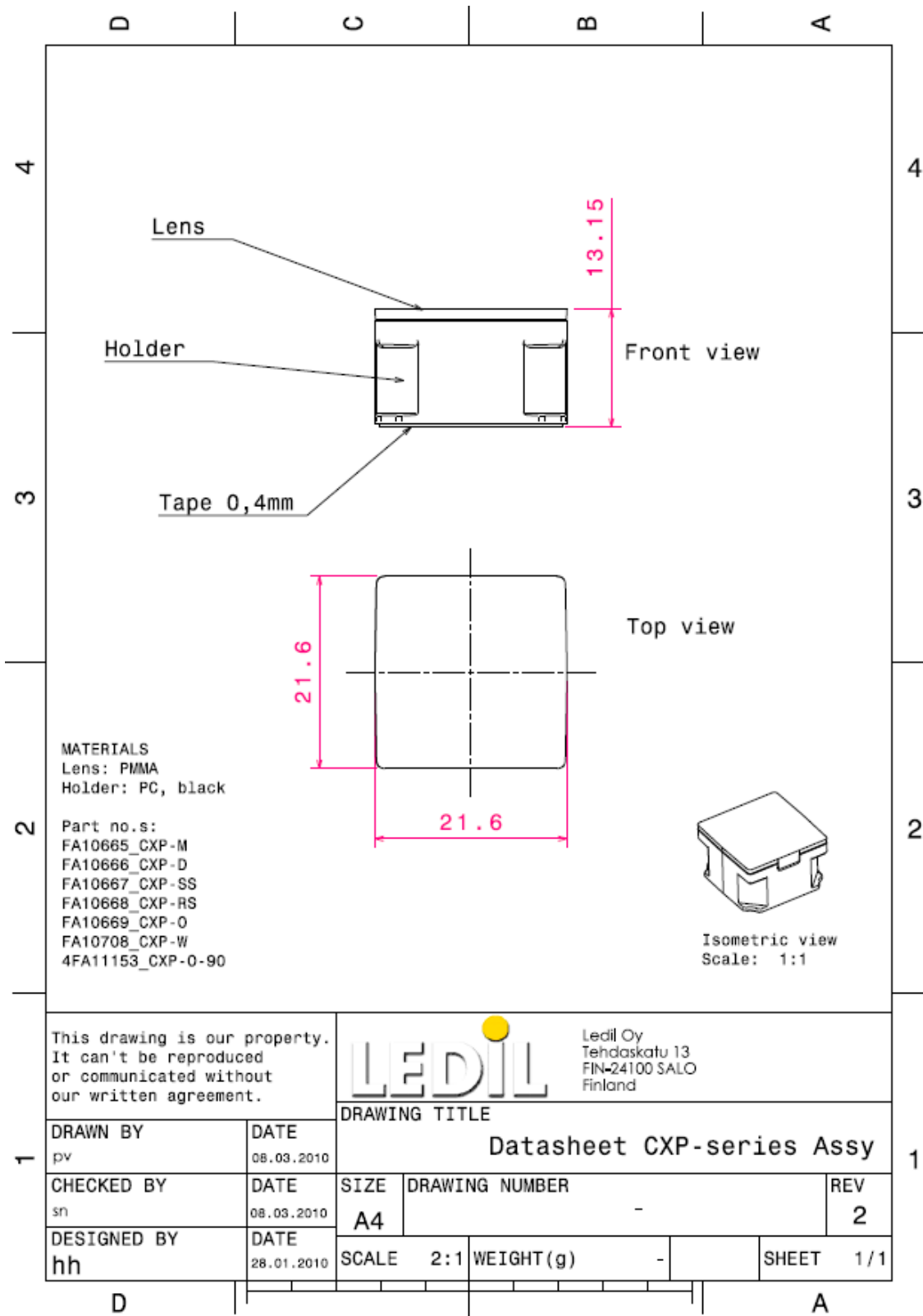
NAME	ORDERING CODE	FWHM Angle
CZ5 SQUARE REAL SPOT	FA10668_CZ5-RS	To be measured shortly
CZ5 SQUARE SMOOTH SPOT	FA10667_CZ5-SS	To be measured shortly
CZ5 SQUARE DIFFUSER	FA10666_CZ5-D	To be measured shortly
CZ5 SQUARE MEDIUM	FA10665_CZ5-M	To be measured shortly
CZ5 SQUARE OVAL	FA10669_CZ5-O	To be measured shortly
CZ5 SQUARE OVAL TURNED 90°	FA11153_CZ5-O-90	To be measured shortly
CZ5 SQUARE WIDE	FA10708_CZ5-W	To be measured shortly

MEASUREMENTS

COMING SOON



DRAWINGS



© Ledil Oy – PRELIMINARY - Subject to change without prior notice