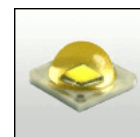


PRELIMINARY

LISA-Z5 MINIATURE SERIES FOR SEUOL Z5 LEDs



- Lens material optical grade PMMA with high UV and temperature resistance (105°C/220°F). Lens holder molded of high quality white ABS.
- High optical efficiency, up to 90%
- Integrated holder. Fastening of holder to PCB with appropriate adhesive, e.c. epoxy or polyurethane based. NOTE: DO NOT USE SUPERGLUE.
- Please check fastening details from this link: (http://www.ledil.com/datasheets/DataSheet_GLUES.pdf)
- Very small and compact dimensions: Diameter 10.5 mm, height 7 mm

LENS TYPES

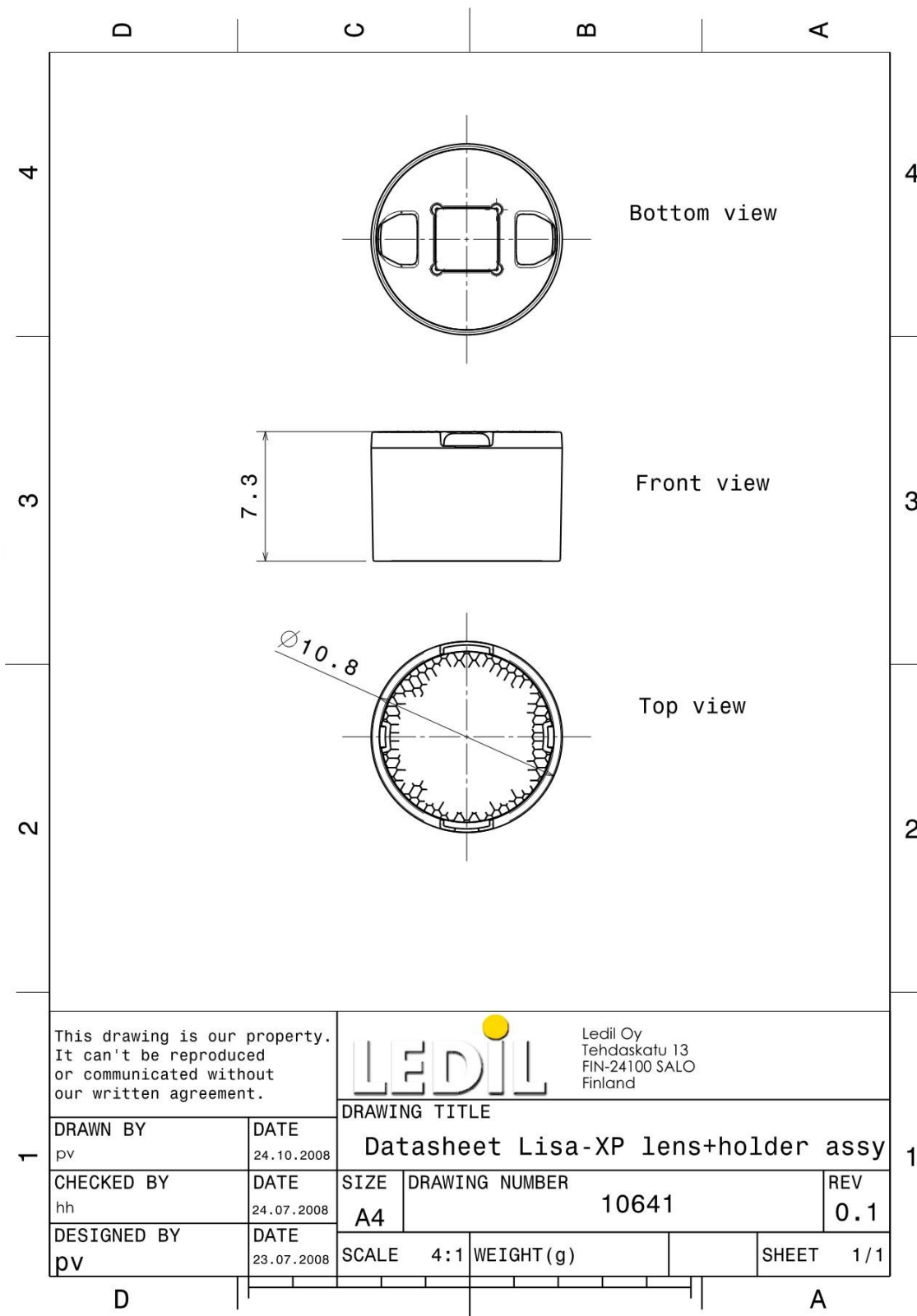
NAME	ORDERING CODE	FWHM Angle
LISA-Z5 smooth spot	CA10641_Lisa-Z5-SS	To be measured shortly
LISA-Z5 real spot	CA11627_Lisa-Z5-RS	To be measured shortly

MEASUREMENT DATA & PHOTOGRAPHS



© Ledil Oy – PRELIMINARY - Subject to change without prior notice

DRAWINGS



© Ledil Oy - PRELIMINARY - Subject to change without prior notice