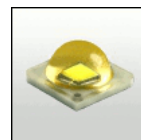


PRELIMINARY LISA2-PIN MINIATURE SERIES FOR SEOUL Z5 LEDs




SEOUL SEMICONDUCTOR



- Lens material optical grade PMMA with high UV and temperature resistance (105°C/220°F). Lens holder molded of high quality black PC (120°C/248°F)
- High optical efficiency, up to 90%.
- Integrated holder with small position pins, see drawing below for more details. Fastening of holder to PCB with appropriate adhesive, e.c. epoxy or polyurethane based. NOTE: DO NOT USE SUPERGLUE.
- Please check fastening details from this link: (http://www.ledil.com/datasheets/DataSheet_GLUES.pdf)
- Very small and compact dimensions: Diameter 9.9 mm, height 6.8 mm

LENS TYPES

NAME	ORDERING CODE	FWHM Angle
Lisa2-Pin Real Spot	FA11055_Lisa2-RS-Pin-Z5	±8°
Lisa2-Pin Medium	FA10995_Lisa2-M-Pin-Z5	±12°
Lisa2-Pin Oval	FA11125_Lisa2-O-Pin-Z5	±9° x ±24°
Lisa2-Pin Wide	FA10996_Lisa2-W-Pin-Z5	±20°
Lisa2-Pin WW	FA10997_Lisa2-WW-Pin-Z5	±30°
Lisa-2-Pin-WWW	FA11429_Lisa2-WWW-Pin-Z5	~±34°

© Ledil Oy - PRELIMINARY - Subject to change without prior notice

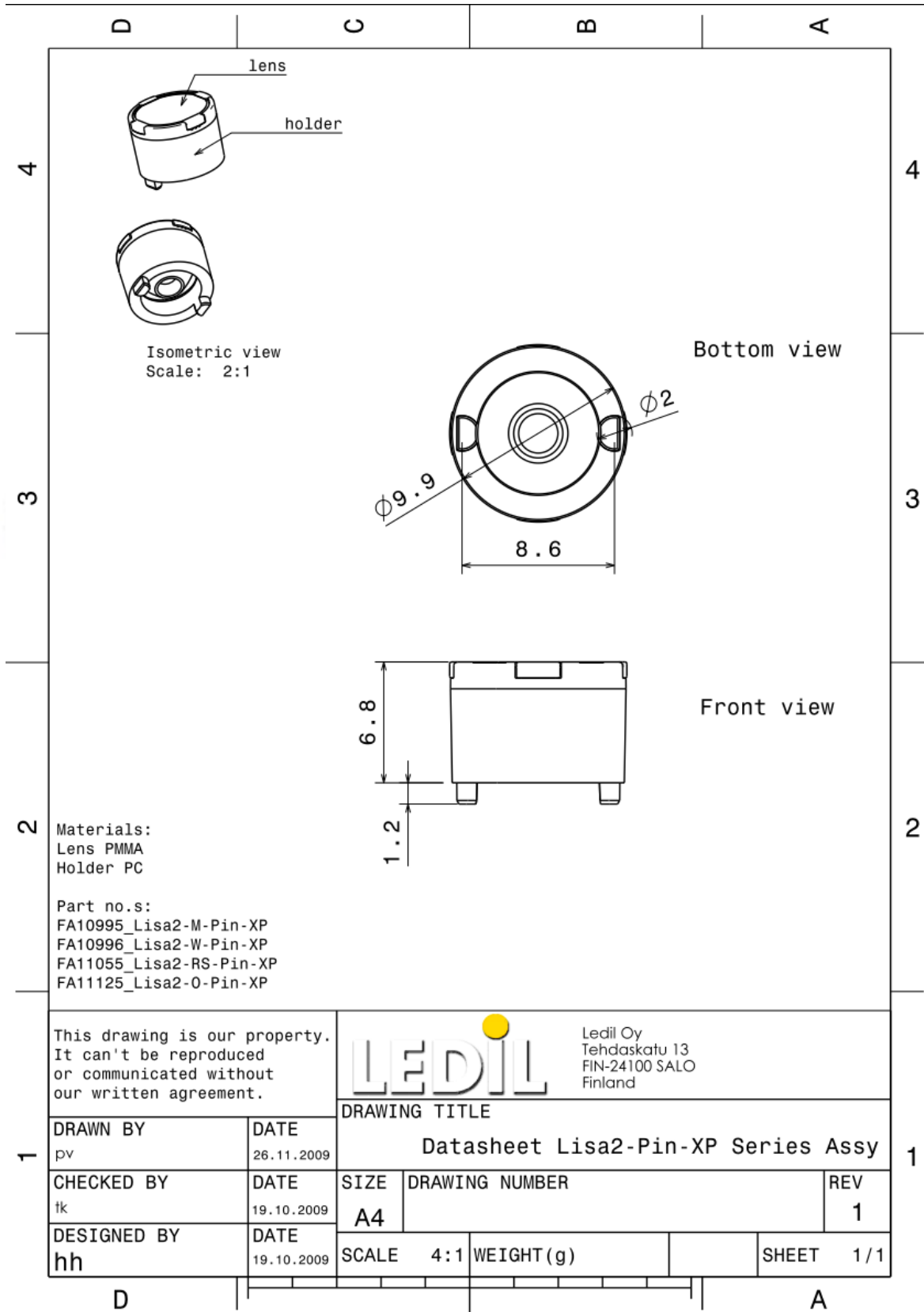
MEASUREMENT DATA



COMING SOON

© Ledil Oy – PRELIMINARY - Subject to change without prior notice

DRAWINGS



This drawing is our property.
It can't be reproduced
or communicated without
our written agreement.



Ledil Oy
Tehdaskatu 13
FIN-24100 SALO
Finland

DRAWING TITLE

Datasheet Lisa2-Pin-XP Series Assy

DRAWN BY pv	DATE 26.11.2009	SIZE A4		DRAWING NUMBER	REV 1
CHECKED BY tk	DATE 19.10.2009	SCALE 4:1	WEIGHT(g)	SHEET 1/1	
DESIGNED BY hh	DATE 19.10.2009				

© Ledil Oy - PRELIMINARY - Subject to change without prior notice