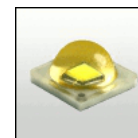


PRELIMINARY TINA2 SERIES FOR SEOUL Z5 LEDs



- Lens material optical grade PMMA with high UV and temperature resistance (105°C/220°F). Allows use of high current and temperature conditions
- Best available optical efficiency, over 90%, with an extremely good cutoff of light
- Fastening to heat sink with a PU foam adhesive tape of automotive grade (included)
- Compact dimensions 16.1 x 10.1 mm.

LENS TYPES

NAME	ORDERING CODE	FWHM Angle
Tina2-Z5 REAL SPOT	CA11016_Tina2-Z5-RS-black	To be measured shortly
Tina2-Z5 DIFFUSER	CA11420_Tina2-Z5-D-black	To be measured shortly
Tina2-Z5 MEDIUM	CA11017_Tina2-Z5-M-black	To be measured shortly
Tina2-Z5 OVAL	CA11052_Tina2-Z5-O-black	To be measured shortly
Tina2-Z5 WIDE	CA11018_Tina2-Z5-W-black	To be measured shortly

© Ledil Oy – PRELIMINARY - Subject to change without prior notice

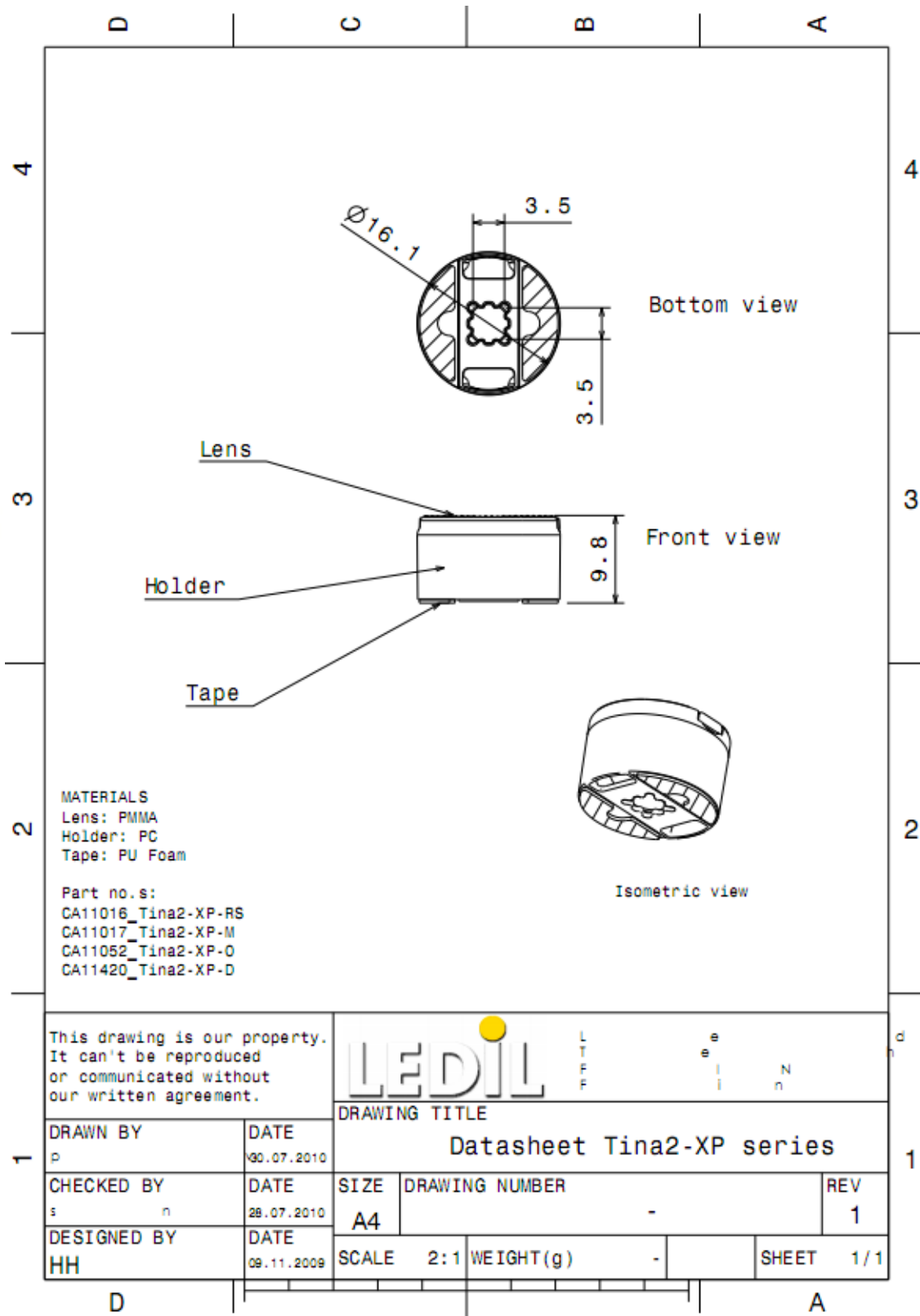
MEASUREMENTS

COMING SOON



© Ledil Oy – PRELIMINARY - Subject to change without prior notice

DRAWINGS



© Ledil Oy - PRELIMINARY - Subject to change without prior notice