

TINA3 -SERIES FOR OSRAM OSLON SSL/SX SERIES OF LEDs

OSRAM
www.osram.com



- Lens material optical grade PMMA with high UV and temperature resistance (105°C/220°F). Allows use of high current and temperature conditions
- Best available optical efficiency, over 90%, with an extremely good cutoff of light
- Fastening to heat sink with a PU foam adhesive tape of automotive grade (included)
- We advise customer to ensure the suitability and sufficiency of the bond in the end product. For example, mechanical stress, vibration and holes on the surface of the circuit board weaken the strength of the tape.
- Please check fastening details from this link:
(http://www.ledil.com/datasheets/DataSheet_TAPE.pdf)
- Compact dimensions 16.1 x 6.9 mm.

LENS TYPES

NAME	ORDERING CODE	FWHM Angle
TINA3 Spot	FA11905_Tina3-S-OSL	Available on Jan 2011
TINA3 Oval	FA11870_Tina3-OO-OSL	Available on Jan 2011
TINA3 Wide	FA11824_Tina3-W-OSL	Available on Jan 2011
TINA3 WW	FA11825_Tina3-WW-OSL	Available on Jan 2011
TINA3 WWW	FA11826_Tina3-WWW-OSL	Available on Jan 2011

NAME	ORDERING CODE	FWHM Angle
TINA3 Spot	FA11905_Tina3-S-OSL-SX	Available on Jan 2011
TINA3 Oval	FA11870_Tina3-OO-OSL-SX	Available on Jan 2011
TINA3 Wide	FA11824_Tina3-W-OSL-SX	Available on Jan 2011
TINA3 WW	FA11825_Tina3-WW-OSL-SX	Available on Jan 2011
TINA3 WWW	FA11826_Tina3-WWW-OSL-SX	Available on Jan 2011

© Ledil Oy – PRELIMINARY - Subject to change without prior notice

MEASUREMENTS

COMING ON JANUARY 2011



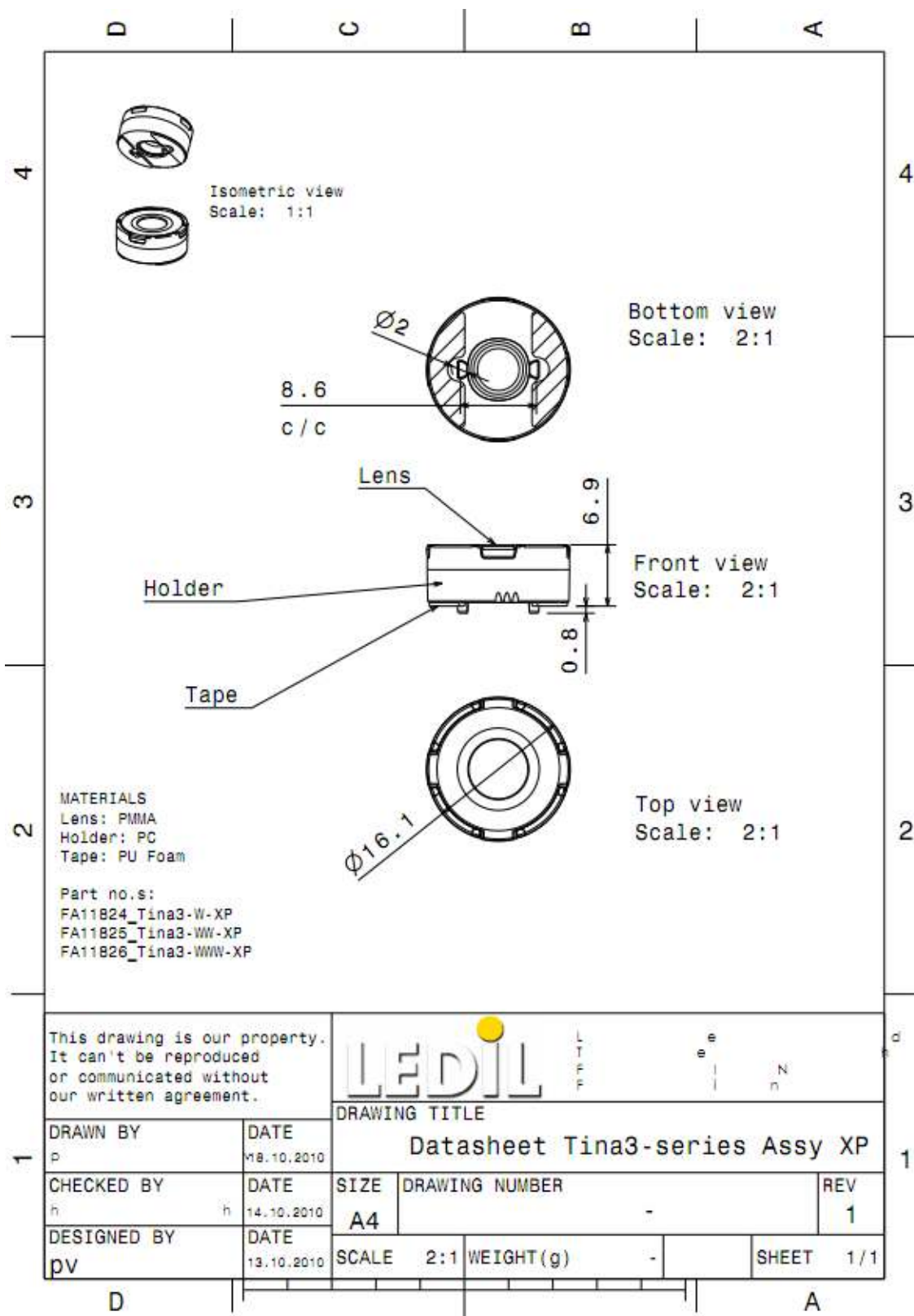
© Ledil Oy – PRELIMINARY - Subject to change without prior notice

Ledil Oy
Tehdaskatu 13
FIN-24100 SALO, Finland

www.ledil.com
email: ledil@ledil.com
FAX: +358-2-733 8001

2011-03-08

DRAWINGS



© Ledil Oy - PRELIMINARY - Subject to change without prior notice