



## Ledil - Best LED Optics In The World

Ledil is an expert in designing and manufacturing LED optics. World's leading lighting manufacturers trust our expertise and quality products. By designing and producing innovative long-life lenses and reflectors we help our customers solve their optical challenges. We are THE component producer and partner to ensure that your LED lighting fixture is designed with the maximum efficiency, flexibility and innovation.

### Wide range of standard products

Our wide product range includes lenses, reflectors and their combinations for various LED lights. Our professional logistics department helps you to find the best solution to receive the products promptly and at a reasonable cost.

### Custom solutions

Do you need a single special lens or a more complex solution developed for a demanding lighting situation? It is our passion to develop new optical solutions. Our professionals design the best optics to meet the requirements of your end product. We handle the whole process smoothly from assignment to delivery. Challenge us – we will take the challenge!

### Logistics

Ledil has a worldwide network of distribution partners, as all the most significant providers of electronic components have Ledil products in their offering. Customers may purchase Ledil products from their local distributor. Ledil products are being shipped from our warehouses in Finland and Hong Kong.

### PCB modification

We provide PCB layout modifications for our partners. Gerber files are available for PCBs designed for Ledil optics. Contact our sales team at [sales@ledil.com](mailto:sales@ledil.com) for more information.

### WANT TO MEET US?

Ledil is attending several seminars during the spring. Get in contact with our sales team at [sales@ledil.com](mailto:sales@ledil.com) and we'll set up a meeting!

We are participating:

#### LED Lighting Seminar & Supplier Exhibition

April 14<sup>th</sup>, Houten, Netherlands

See more information at:

<http://www.arroweurope.com/news-events/arrow-events/detail/article/led-lighting-seminar-supplier-exhibition.html>

#### Lightfair International 2011

May 15<sup>th</sup>-19<sup>th</sup>, Philadelphia, USA

See more information at:

<http://www.lightfair.com/lightfair/V40/>

## EDS 2011

May 24<sup>th</sup>-26<sup>th</sup>, Las Vegas, USA

See more information at:

<http://www.edsc.org/>

## Seminars organized by Arrow Asia:

April 6<sup>th</sup>, Singapore

April 28<sup>th</sup>, Delhi, India

May 26<sup>th</sup>, Hangzhou, China

See more information at:

<http://www.arrowasia.com.hk/public/MAR/UEVN/?version=en>

## WE ARE MOVING

Our headquarters is moving to a new location on April 16<sup>th</sup>.

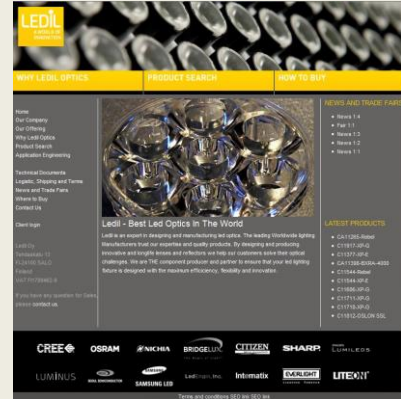
As of April 18<sup>th</sup> our new shipping and billing address is:

Ledil Oy  
Salorankatu 10  
24240 Salo, FINLAND

## OUR NEW WEBSITE

Ledil is currently building a new website, so look out for an update at

[www.ledil.com](http://www.ledil.com).



## New Products Q1/2011-Q2/2011

Datasheets, IES and 3D files for new products are available upon request. For IES files, please contact [antti.hamalainen@ledil.com](mailto:antti.hamalainen@ledil.com).

For datasheets and mechanical 3D model files, please contact [sampsu.nurmi@ledil.com](mailto:sampsu.nurmi@ledil.com).

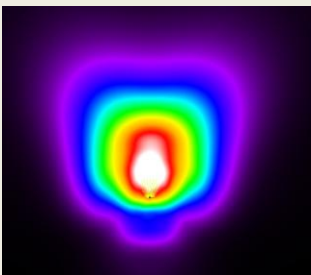
## NEW PRODUCTS FOR SPECIFIC APPLICATIONS

### JULIA-A

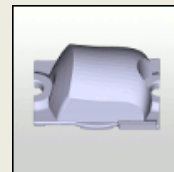
Julia-A is our new addition for backlighting. It has a very wide and uniform batwing light distribution, having the intensity peak at around 80 deg. With Julia-A lens you can build thinner backlight modules with longer LED spacing, saving in operation and application costs. More information available soon!



### STRADA FORWARD THROW LENSES



Strada family will grow again, now with two forward throw lenses: Strada-FT and, a wider version, Strada-FW. These lenses have wide and uniform asymmetrical rectangular beams, with a high intensity peak at around 55 deg in one direction. These qualities make them ideal for LED converted wall packs and field lighting luminaires. These lenses can be used together with other existing Strada lenses to make virtually all kinds of light patterns needed in outdoor and wide area lighting. If used in a 4-direction lens arrangement, a wide square, type-V light pattern can be achieved, which is ideal for parking lots etc.



### EMILY-WAS

Emily series has 2 new lenses especially designed for efficient and visually pleasing wall washing applications. The lenses have asymmetrical narrow and oval beams with good cut-off, so that almost all of the light will illuminate the wall, and not the sky or ceiling. You can achieve great performance even without tilting the wall washer lamp towards the wall.



Emily-SS-was



Emily-O-was

## Emily series

For Cree, Philips Lumileds, Nichia, Osram and Seoul Semiconductor LEDs

---



Emily-SS-was



Emily-O-was

CA11998\_Emily-SS-was-Tape-XP  
CA11998\_Emily-SS-was-Tape-XP-G  
CA11998\_Emily-SS-was-Tape-XM  
CA11998\_Emily-SS-was-Tape-RE  
CA11998\_Emily-SS-was-Tape-RE-ES  
CA11998\_Emily-SS-was-Tape-NCS19  
CA11998\_Emily-SS-was-Tape-NVS19  
CA11998\_Emily-SS-was-Tape-OSL  
CA11998\_Emily-SS-was-Tape-Z5

CA12000\_Emily-O-was-Tape-XP  
CA12000\_Emily-O-was-Tape-XP-G  
CA12000\_Emily-O-was-Tape-XM  
CA12000\_Emily-O-was-Tape-RE  
CA12000\_Emily-O-was-Tape-RE-ES  
CA12000\_Emily-O-was-Tape-NCS19  
CA12000\_Emily-O-was-Tape-NVS19  
CA12000\_Emily-O-was-Tape-OSL  
CA12000\_Emily-O-was-Tape-Z5

CA12062\_Emily-SS-Tape-XM  
CA12062\_Emily-SS-Tape-RE-ES  
CA12064\_Emily-M-Tape-XM  
CA12064\_Emily-M-Tape-RE-ES  
CA12066\_Emily-O-Tape-XM  
CA12066\_Emily-O-Tape-RE-ES

CA12068\_Emily-O-90-Tape-XM  
CA12068\_Emily-O-90-Tape-RE-ES  
CA12070\_Emily-M2-Tape-XM  
CA12070\_Emily-M2-Tape-RE-ES  
CA12072\_Emily-M-PC-Tape-XM  
CA12072\_Emily-M-PC-Tape-RE-ES

## Eva series

For Cree XM-L LEDs

---



CA12055\_Eva-S-XM-Tape  
CA12057\_Eva-D-XM-Tape  
CA12058\_Eva-M-XM-Tape  
CA12059\_Eva-W-XM-Tape  
CA12060\_Eva-WW-XM-Tape

## Heidi series

For Cree, Philips Lumileds, Nichia, Osram and Seoul Semiconductor LEDs

---



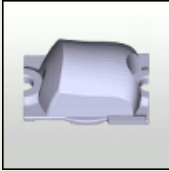
CA12079\_Heidi-W2-XP  
CA12079\_Heidi-W2-XP-G  
CA12079\_Heidi-W2-XM  
CA12079\_Heidi-W2-RE  
CA12079\_Heidi-W2-RE-ES

CA12079\_Heidi-W2-NCS19  
CA12079\_Heidi-W2-NVS19  
CA12079\_Heidi-W2-OSL  
CA12079\_Heidi-W2-Z5

## Strada series

For Cree, Philips Lumileds, Nichia, Osram and Seoul Semiconductor LEDs

---



Strada-FT

C12049\_Strada-FT-XP  
C12049\_Strada-FT-XP-G  
C12049\_Strada-FT-RE  
C12049\_Strada-FT-RE-ES  
C12049\_Strada-FT-NCS19  
C12049\_Strada-FT-NVS19  
C12049\_Strada-FT-OSL  
C12049\_Strada-FT-Z5

CA12050\_Strada-FT-Tape-XP  
CA12050\_Strada-FT-Tape-XP-G  
CA12050\_Strada-FT-Tape-RE  
CA12050\_Strada-FT-Tape-RE-ES  
CA12050\_Strada-FT-Tape-NCS19  
CA12050\_Strada-FT-Tape-NVS19  
CA12050\_Strada-FT-Tape-OSL  
CA12050\_Strada-FT-Tape-Z5



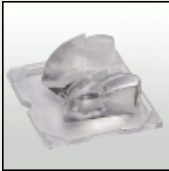
Strada-SQ-T-DN-XM

C11889\_Strada-SQ-T-DN-XM-L  
C11891\_Strada-SQ-T-DW-XM-L-EU  
C11962\_Strada-SQ-T-DW-XM-L-US

CA11890\_Strada-SQ-T-DN-XM-L-TAPE  
CA11892\_Strada-SQ-T-DW-XM-L-EU-TAPE  
CA11963\_Strada-SQ-T-DW-XM-L-US-TAPE



Strada-SQ-T-DW-EU-XM



Strada-SQ-T-DW-US-XM

## Brooke series

For Bridgelux BXRA-C0800/1200/2000 LEDs

---



C12082\_Brooke-SCR-S  
C12083\_Brooke-SCR-M  
C12084\_Brooke-SCR-W

C11506\_Brooke-MBH-S (for Molex connector)  
C11507\_Brooke-MBH-M (for Molex connector)  
C11508\_Brooke-MBH-W (for Molex connector)

## Minnie

For Cree MT-G LEDs

---



C12095\_Minnie-M-MTG  
C11862\_Minnie-W-MTG

CA12097\_Minnie-M-MTG  
CA12096\_Minnie-W-MTG

## Lena

For Nichia and Citizen LEDs

---



CA12099\_Lena-S-COB204

CA12100\_Lena-W-COB204

CA12101\_Lena-S-CL340

CA12102\_Lena-W-CL340

## Julia

For Cree, Philips Lumileds, Nichia, Osram and Seoul Semiconductor LEDs

---



FA11948\_Julia-A-tape-XP

FA11948\_Julia-A-tape-XP-G

FA11948\_Julia-A-tape-RE

FA11948\_Julia-A-tape-RE-ES

FA11948\_Julia-A-tape-NCS19

FA11948\_Julia-A-tape-NVS19

FA11948\_Julia-A-tape-OSL

FA11948\_Julia-A-tape-Z5