

## FLORENTINA-1-D

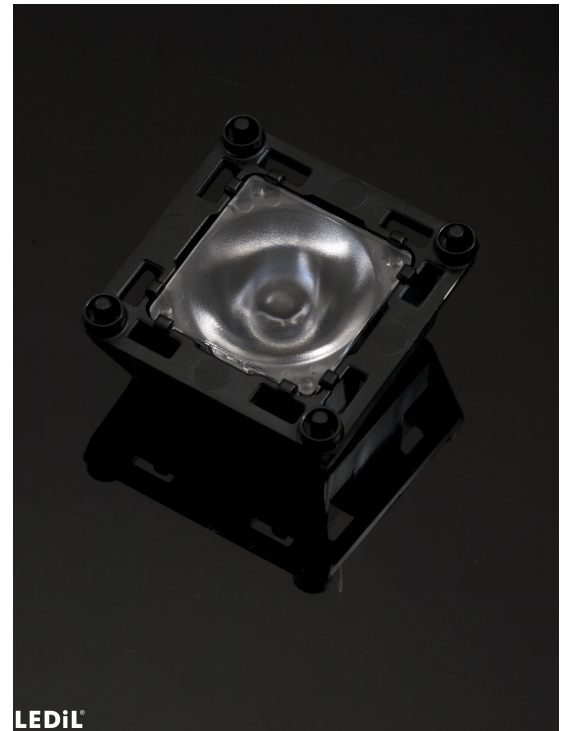
~18° diffused spot beam

### SPECIFICATION:

Dimensions	39.7 x 39.7 mm
Height	13 mm
Fastening	tape
ROHS compliant	yes ⓘ

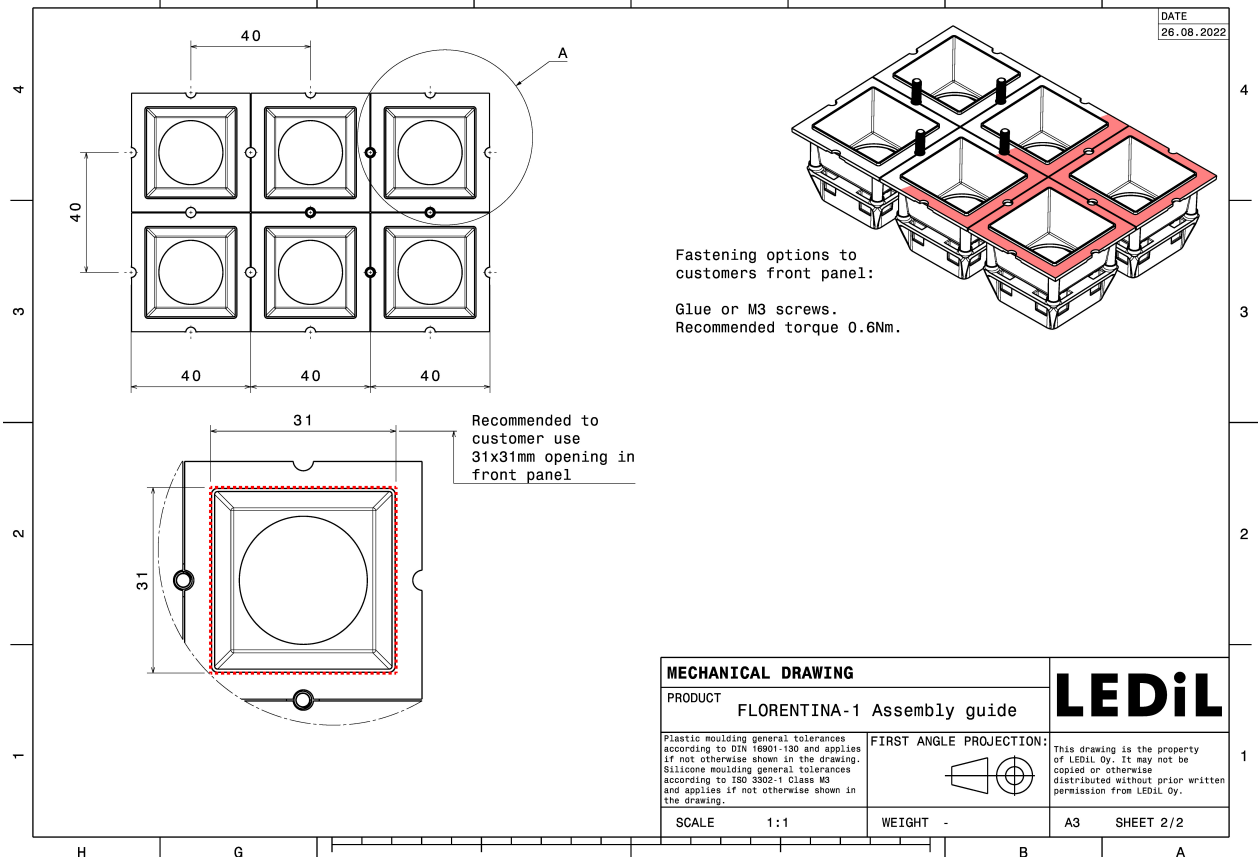
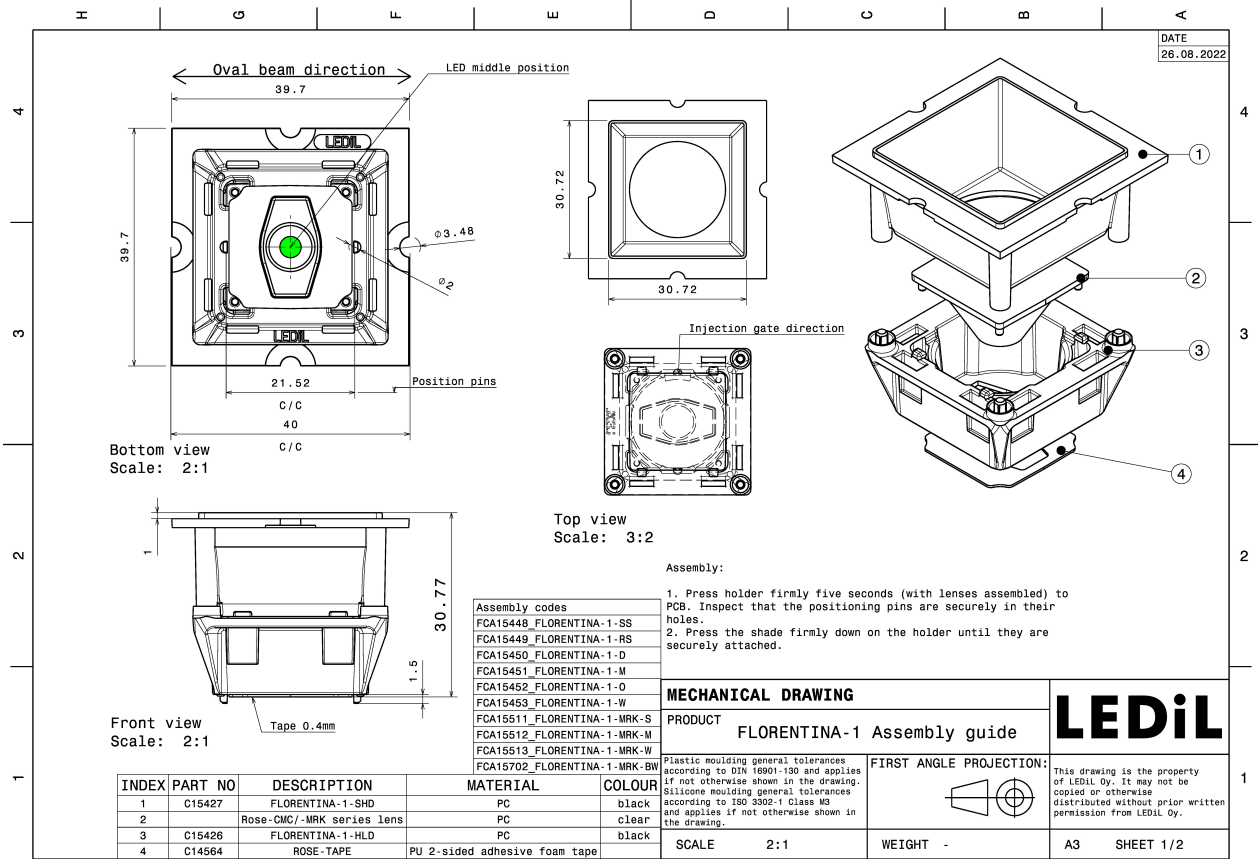
### MATERIALS:

Component	Type	Material	Colour	Finish	Length
ROSE-CMC-D	Single lens	PC	clear		21.6
FLORENTINA-1-HLD	Holder	PC	black		32.6
ROSE-TAPE	Tape	Acrylic foam	black		21.6



### ORDERING INFORMATION:

Component	Qty in box	MOQ	MPQ	Box weight (kg)
FCA15450_FLORENTINA-1-D » Box size: 480 x 280 x 300 mm	840		60	7.9

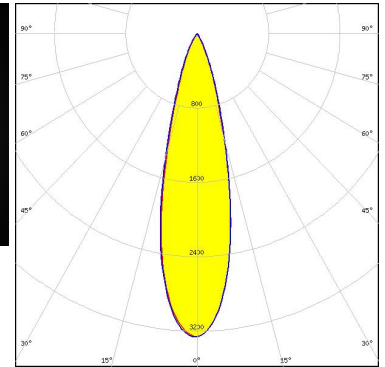


See also our general installation guide: [www.ledil.com/installation\\_guide](http://www.ledil.com/installation_guide)

#### OPTICAL RESULTS (MEASURED):



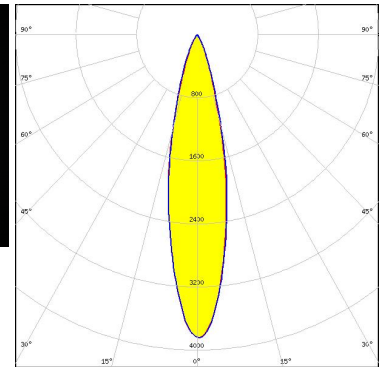
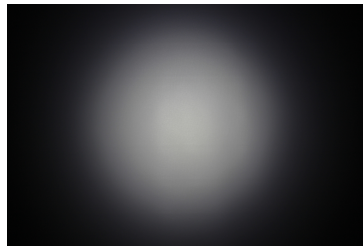
**LED** Bridgelux SMD 5050  
**FWHM / FWTM** 26.0° / 48.0°  
**Efficiency** 78 %  
**Peak intensity** 3.3 cd/lm  
**LEDs/each optic** 1  
**Light colour/type** White  
**Required components:**  
 C15427\_FLORENTINA-1-SHD-60



Light distribution files



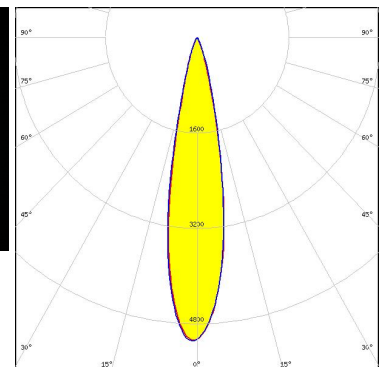
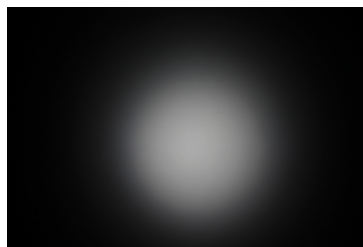
**LED** XHP35 HD  
**FWHM / FWTM** 23.0° / 45.0°  
**Efficiency** 77 %  
**Peak intensity** 3.9 cd/lm  
**LEDs/each optic** 1  
**Light colour/type** White  
**Required components:**  
 C15427\_FLORENTINA-1-SHD-60



Light distribution files



**LED** XHP35 HI  
**FWHM / FWTM** 21.0° / 37.0°  
**Efficiency** 77 %  
**Peak intensity** 5.1 cd/lm  
**LEDs/each optic** 1  
**Light colour/type** White  
**Required components:**

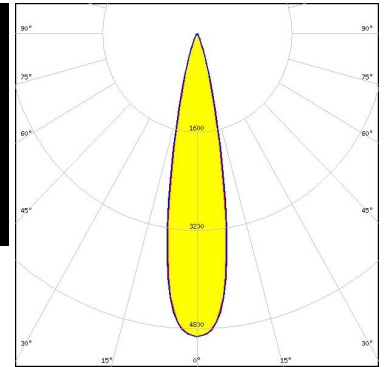


Light distribution files

#### OPTICAL RESULTS (MEASURED):



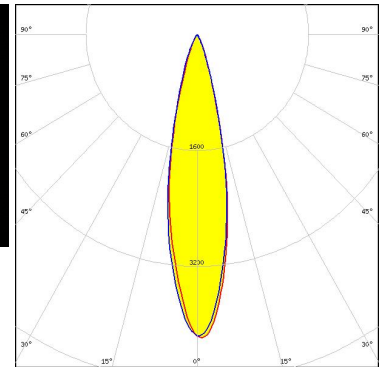
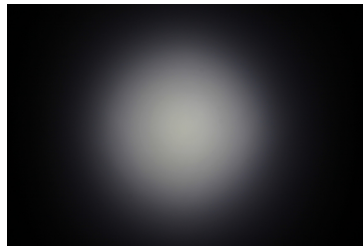
LED XP-G2  
 FWHM / FWTM 21.0° / 37.0°  
 Efficiency 77 %  
 Peak intensity 5.1 cd/lm  
 LEDs/each optic 1  
 Light colour/type White  
 Required components:  
 C15427\_FLORENTINA-1-SHD-60



Light distribution files



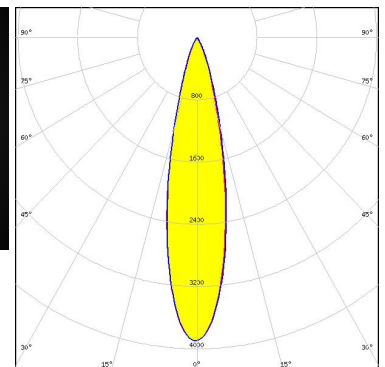
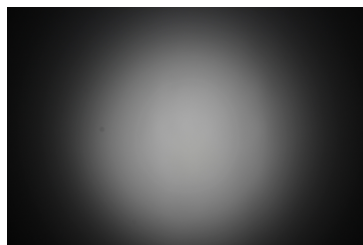
LED XP-L HD  
 FWHM / FWTM 23.0° / 42.0°  
 Efficiency 76 %  
 Peak intensity 4.2 cd/lm  
 LEDs/each optic 1  
 Light colour/type White  
 Required components:  
 C15427\_FLORENTINA-1-SHD-60



Light distribution files



LED XP-L2  
 FWHM / FWTM 23.0° / 44.0°  
 Efficiency 75 %  
 Peak intensity 3.9 cd/lm  
 LEDs/each optic 1  
 Light colour/type White  
 Required components:  
 C15427\_FLORENTINA-1-SHD-60



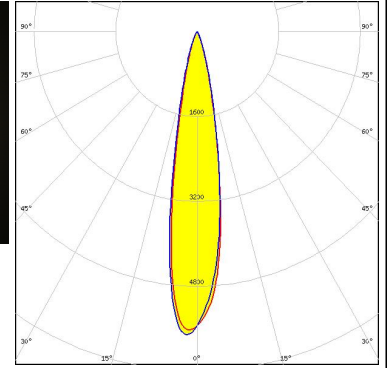
Light distribution files



#### OPTICAL RESULTS (MEASURED):



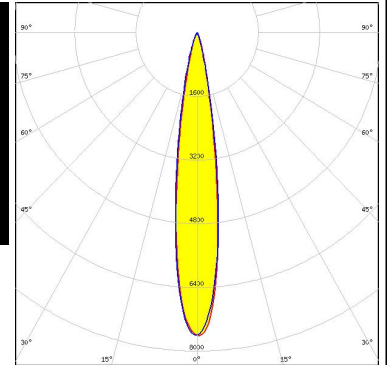
**LED** XT-E  
**FWHM / FWTM** 18.0° / 35.0°  
**Efficiency** 76 %  
**Peak intensity** 5.8 cd/lm  
**LEDs/each optic** 1  
**Light colour/type** White  
**Required components:**  
 C15427\_FLORENTINA-1-SHD-60



Light distribution files



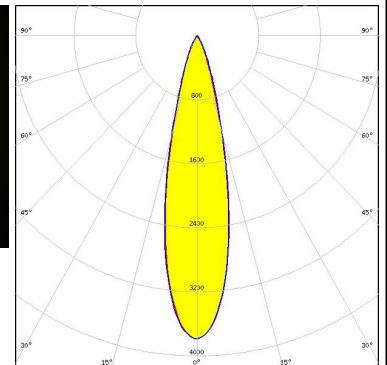
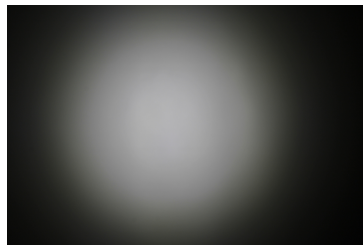
**LED** LUXEON 3030 2D (Round LES)  
**FWHM / FWTM** 16.0° / 31.0°  
**Efficiency** 79 %  
**Peak intensity** 7.6 cd/lm  
**LEDs/each optic** 1  
**Light colour/type** White  
**Required components:**



Light distribution files



**LED** LUXEON 5050 Round LES  
**FWHM / FWTM** 24.0° / 45.0°  
**Efficiency** 79 %  
**Peak intensity** 3.8 cd/lm  
**LEDs/each optic** 1  
**Light colour/type** White  
**Required components:**  
 C15427\_FLORENTINA-1-SHD-60

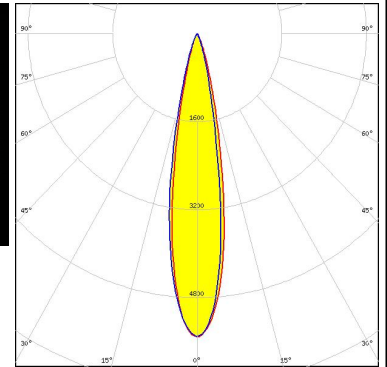


Light distribution files

#### OPTICAL RESULTS (MEASURED):



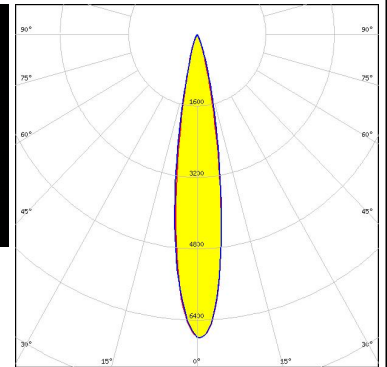
LED LUXEON TX  
 FWHM / FWTM 19.0° / 36.0°  
 Efficiency 77 %  
 Peak intensity 5.5 cd/lm  
 LEDs/each optic 1  
 Light colour/type White  
 Required components:  
 C15427\_FLORENTINA-1-SHD-60



Light distribution files



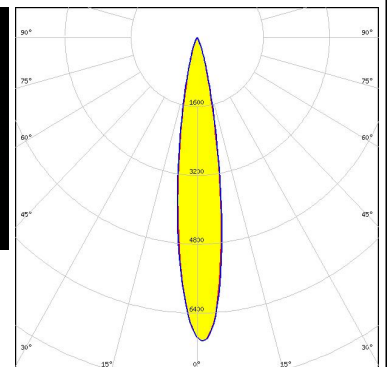
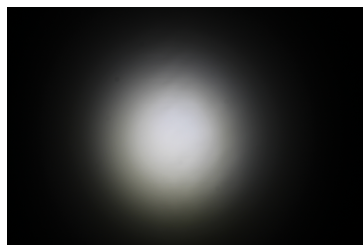
LED NF2x757G  
 FWHM / FWTM 18.0° / 34.0°  
 Efficiency 82 %  
 Peak intensity 6.8 cd/lm  
 LEDs/each optic 1  
 Light colour/type White  
 Required components:  
 C16701\_FLORENTINA-1-SHD-60-WHT



Light distribution files



LED NF2x757G  
 FWHM / FWTM 17.0° / 33.0°  
 Efficiency 81 %  
 Peak intensity 7.2 cd/lm  
 LEDs/each optic 1  
 Light colour/type White  
 Required components:  
 C15427\_FLORENTINA-1-SHD-60

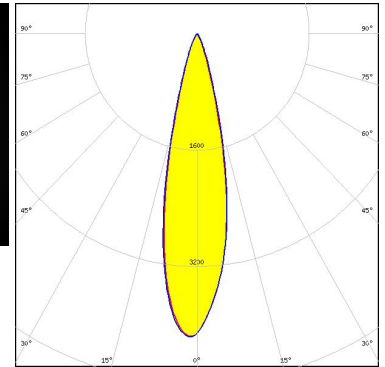


Light distribution files

#### OPTICAL RESULTS (MEASURED):



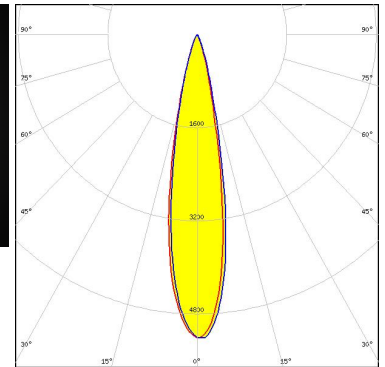
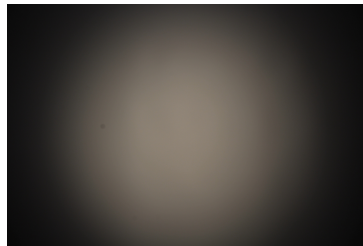
LED NVSW319B  
 FWHM / FWTM 24.0° / 42.0°  
 Efficiency 79 %  
 Peak intensity 4.2 cd/lm  
 LEDs/each optic 1  
 Light colour/type White  
 Required components:  
 C15427\_FLORENTINA-1-SHD-60



Light distribution files



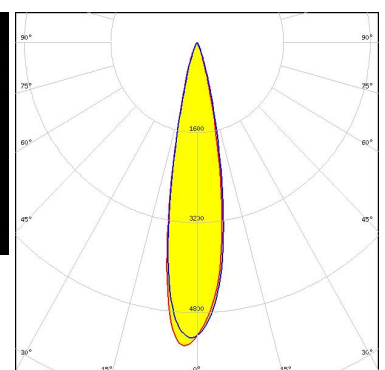
LED NVSxx19B/NVSxx19C  
 FWHM / FWTM 20.0° / 37.0°  
 Efficiency 78 %  
 Peak intensity 5.2 cd/lm  
 LEDs/each optic 1  
 Light colour/type White  
 Required components:  
 C15427\_FLORENTINA-1-SHD-60



Light distribution files



LED OSLOM Square CSSRM2/CSSRM3  
 FWHM / FWTM 20.0° / 36.0°  
 Efficiency 79 %  
 Peak intensity 5.4 cd/lm  
 LEDs/each optic 1  
 Light colour/type White  
 Required components:  
 C15427\_FLORENTINA-1-SHD-60

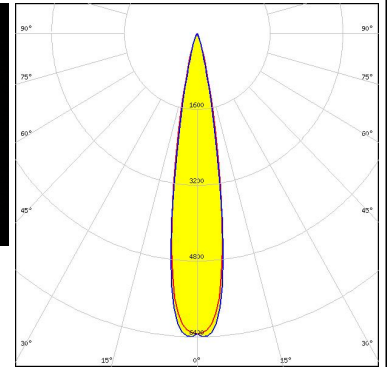


Light distribution files

#### OPTICAL RESULTS (MEASURED):

**OSRAM**  
Opto Semiconductors

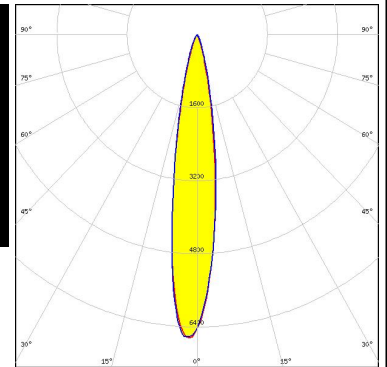
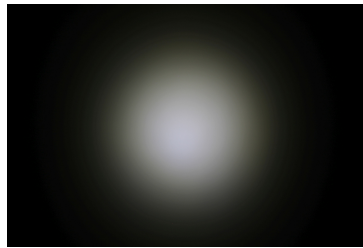
LED OSLON SSL 150  
 FWHM / FWTM 18.0° / 32.0°  
 Efficiency 77 %  
 Peak intensity 6.6 cd/lm  
 LEDs/each optic 1  
 Light colour/type White  
 Required components:  
 C15427\_FLORENTINA-1-SHD-60



Light distribution files

**SAMSUNG**

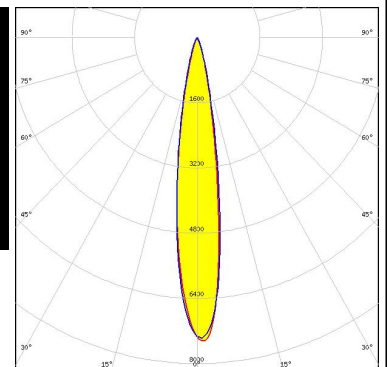
LED LM561B  
 FWHM / FWTM 17.0° / 34.0°  
 Efficiency 80 %  
 Peak intensity 6.9 cd/lm  
 LEDs/each optic 1  
 Light colour/type White  
 Required components:  
 C15427\_FLORENTINA-1-SHD-60



Light distribution files


**SEUL**  
SEOUL SEMICONDUCTOR

LED SEOUL 5630  
 FWHM / FWTM 16.0° / 33.0°  
 Efficiency 82 %  
 Peak intensity 7.4 cd/lm  
 LEDs/each optic 1  
 Light colour/type White  
 Required components:  
 C15427\_FLORENTINA-1-SHD-60



Light distribution files

#### OPTICAL RESULTS (MEASURED):

 SEOUL SEMICONDUCTOR		
LED	Z8Y22P	
FWHM / FWTM	19.0° / 35.0°	
Efficiency	75 %	
Peak intensity	5.5 cd/lm	
LEDs/each optic	1	
Light colour/type	White	
Required components:		
	C15427_FLORENTINA-1-SHD-60	

Light distribution files

#### GENERAL INFORMATION:

NOTE: The typical beam angle will be changed by different color, chip size and chip position tolerance. The typical total beam angle is the full angle measured where the luminous intensity is half of the peak value.

#### MATERIALS:

As part of our continuous research and improvement processes, and to ensure the best possible quality and availability of our products, LEDiL reserves the right to change material grades without notice.

#### PRODUCT DATA USER AGREEMENT AND DISCLAIMER:

The measured data in the provided downloadable LEDiL Product Datasheets and Mechanical 2D-Drawings is rounded and provided as reference for planning. LEDiL Oy's optical specifications have been verified by conducting performance testing of the products in accordance with the company's quality system. The reported data are averaged results of multiple measurements with typical variation. LEDiL Oy reserves the right to without prior notification make changes and improvements to its products.

LEDiL Oy assumes neither warranty, nor guarantee nor any other liability of any kind for the contents and correctness of the provided data. The provided data has been generated with highest diligence but the provided data may in reality not represent the complete possible variation range of all intrinsic parameters. Therefore, in certain cases a deviation from the provided data could occur.

LEDiL Oy reserves the right to undertake technical changes of its products without further notification which could lead to changes in the provided data. LEDiL Oy assumes no liability of any kind for the possible deviation from any provided data or any other damage resulting from the usage of the provided data.

The user agrees to this disclaimer and user agreement with the download or usage of the provided files.

#### LEDiL Oy

Joensuunkatu 13  
FI-24240 SALO  
Finland

#### LEDiL Inc.

228 West Page Street  
Suite D  
Sycamore IL 60178  
USA

#### Ledil Optics Technology (Shenzhen) Co., Ltd.

# 405 , Block B  
Casic Motor Building  
Shenzhen 518057  
P.R.CHINA

#### Local sales and technical support

[www.ledil.com/  
where\\_to\\_buy](http://www.ledil.com/where_to_buy)

#### Shipping locations

Poznan, Poland  
Hong Kong, China

#### Distribution Partners

[www.ledil.com/  
where\\_to\\_buy](http://www.ledil.com/where_to_buy)