

## GABRIELLA-MIDI-S

~10° spot beam with holder and installation tape

### SPECIFICATION:

Dimensions	Ø 37.8
Height	24.1 mm
Fastening	tape, pin
ROHS compliant	yes ⓘ

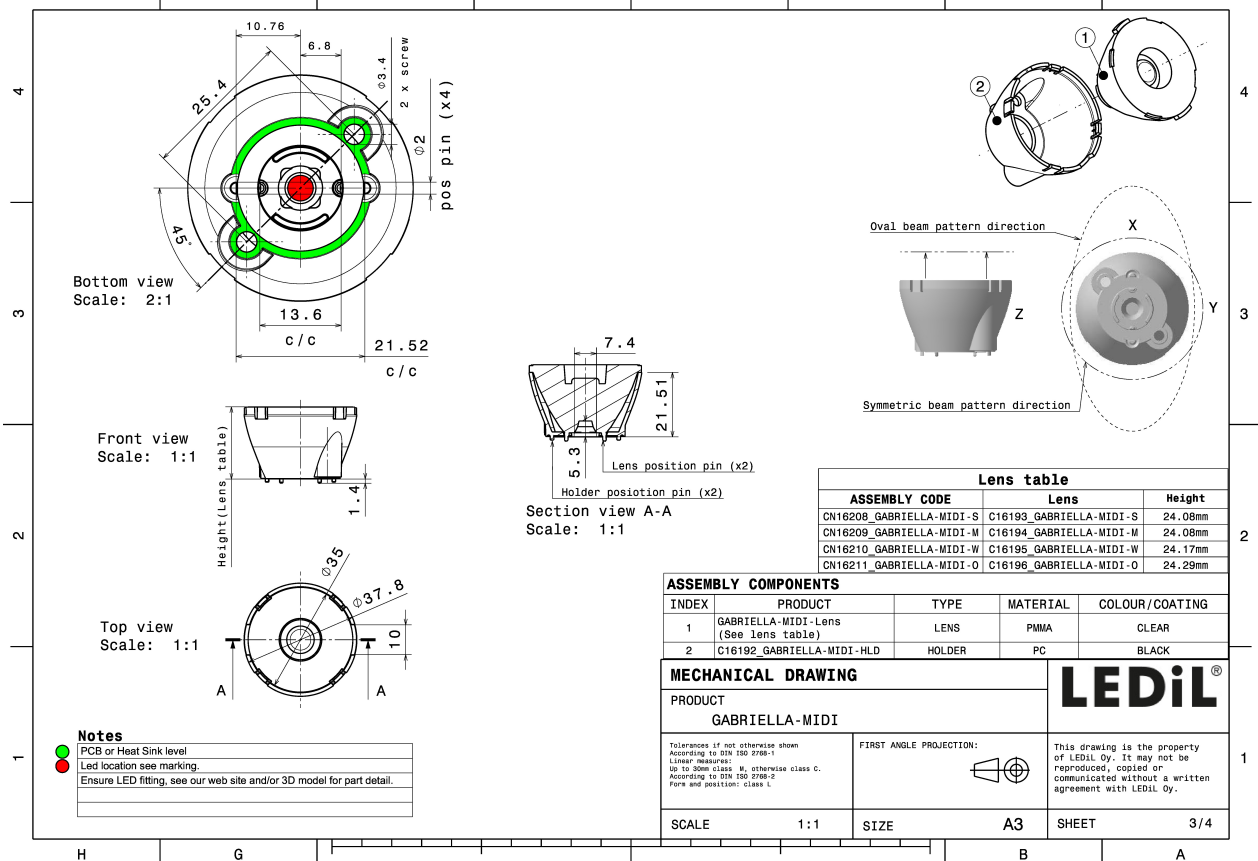
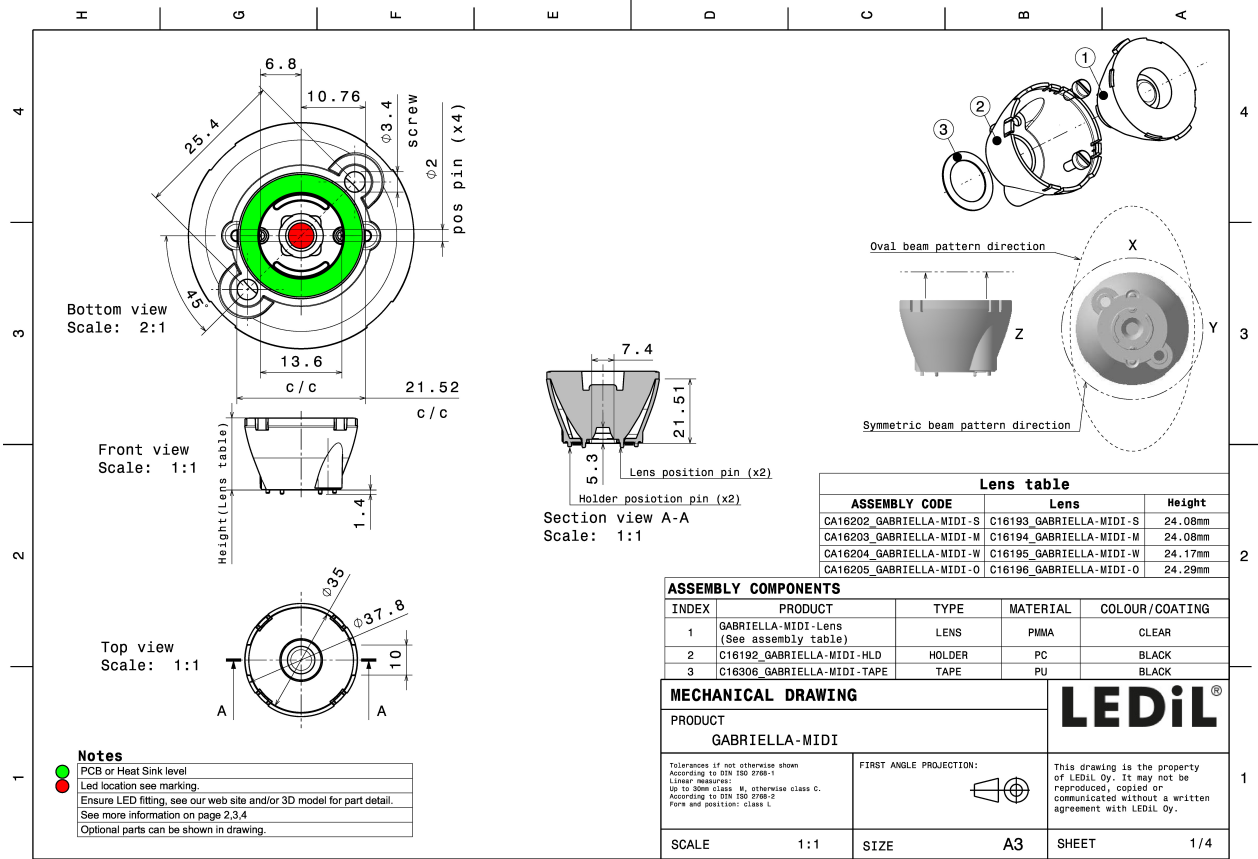
### MATERIALS:

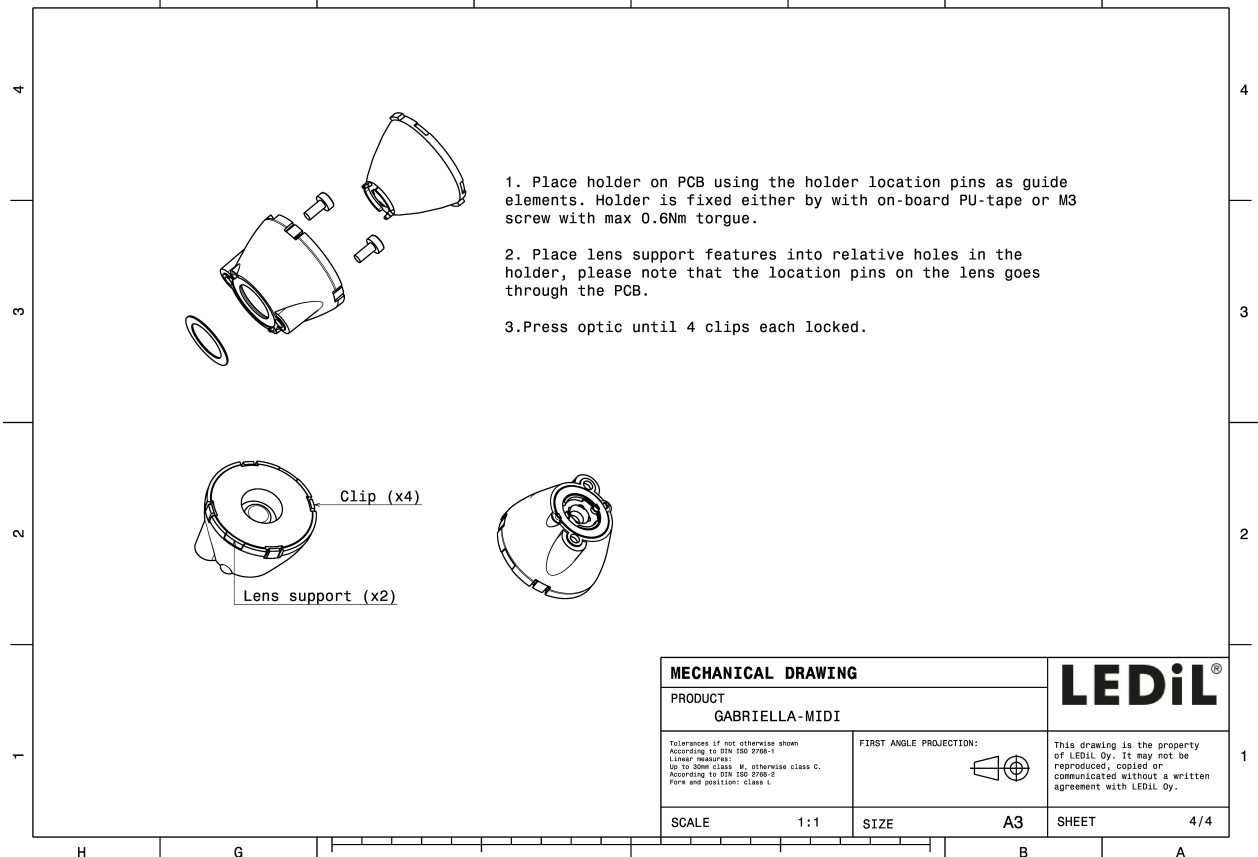
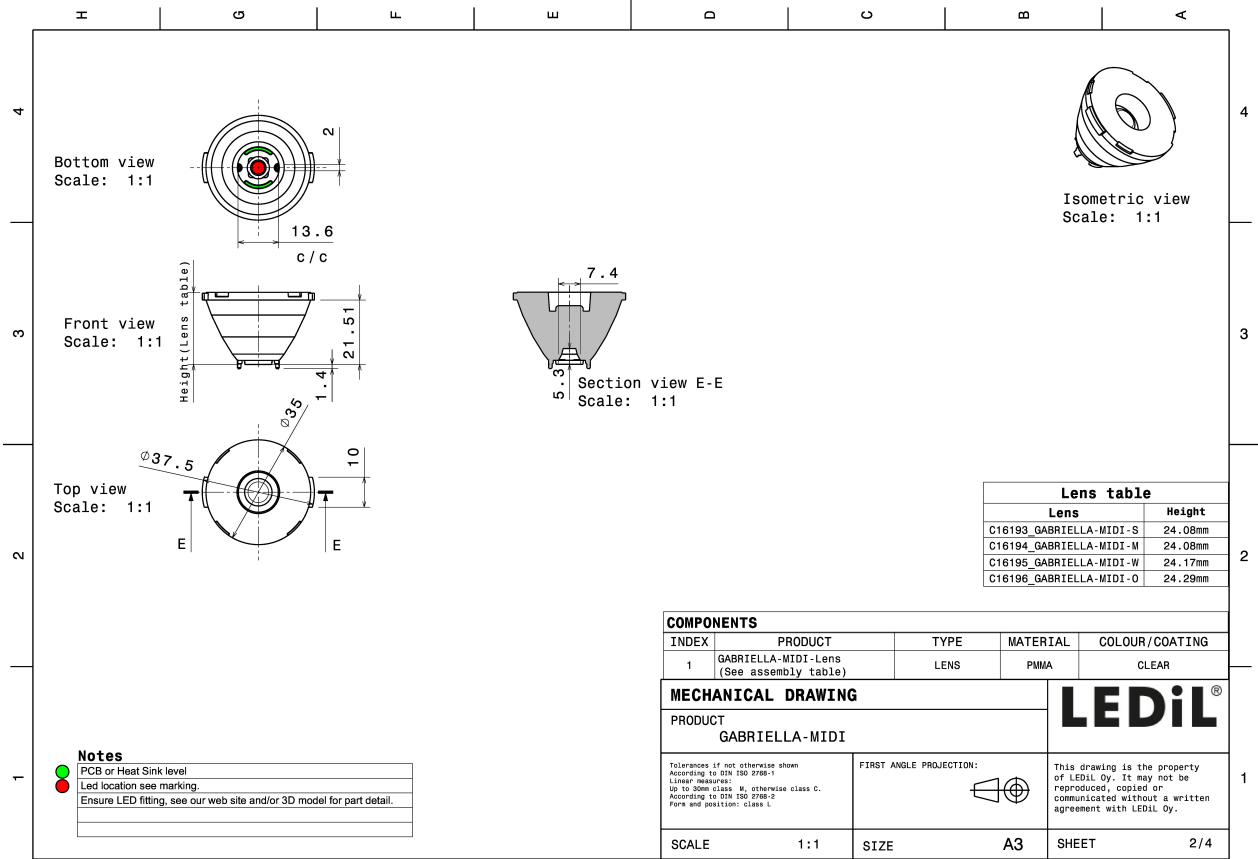
Component	Type	Material	Colour	Finish	Length (mm)
GABRIELLA-MIDI-S	Single lens	PMMA	clear		
GABRIELLA-MIDI-HLD	Holder	PC	black		
GABRIELLA-MIDI-TAPE	Tape	Acryl tape	black		



### ORDERING INFORMATION:

Component	Qty in box	MOQ	MPQ	Box weight (kg)
CA16202_GABRIELLA-MIDI-S » Box size: 476 x 273 x 292 mm	500	100	50	11.7



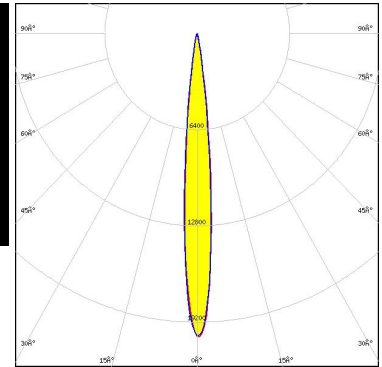
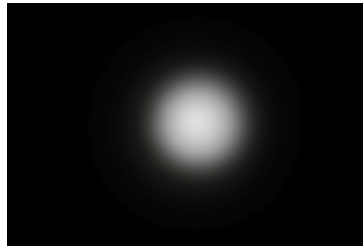


See also our general installation guide: [www.ledil.com/installation\\_guide](http://www.ledil.com/installation_guide)

#### OPTICAL RESULTS (MEASURED):



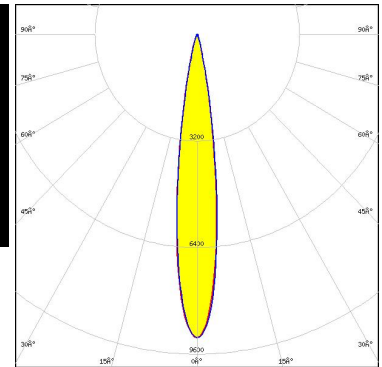
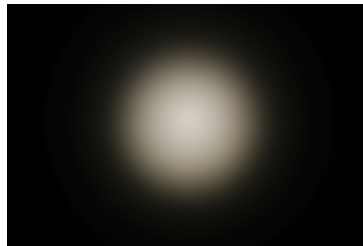
**LED** XHP35 HI  
**FWHM / FWTM** 10.0° / 19.0°  
**Efficiency** 90 %  
**Peak intensity** 20.4 cd/lm  
**LEDs/each optic** 1  
**Light colour/type** White  
**Required components:**



Light distribution files



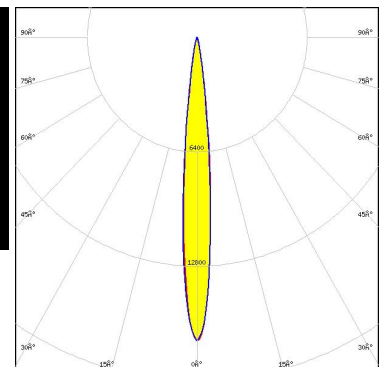
**LED** XHP50.2  
**FWHM / FWTM** 15.0° / 28.0°  
**Efficiency** 87 %  
**Peak intensity** 9.1 cd/lm  
**LEDs/each optic** 1  
**Light colour/type** White  
**Required components:**



Light distribution files



**LED** XM-L RGBW (XMLDCL HI)  
**FWHM / FWTM** 11.0° / 20.0°  
**Efficiency** 89 %  
**Peak intensity** 17 cd/lm  
**LEDs/each optic** 1  
**Light colour/type** RGBW  
**Required components:**



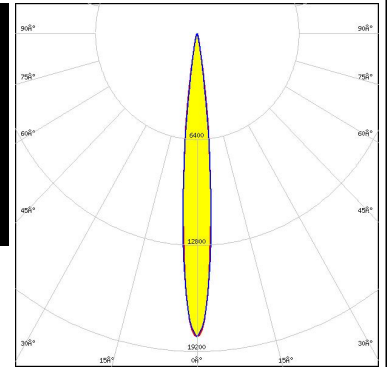
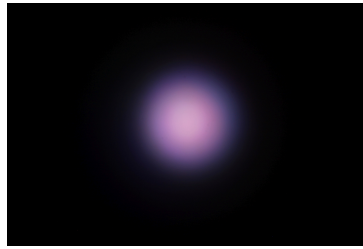
Light distribution files



#### OPTICAL RESULTS (MEASURED):



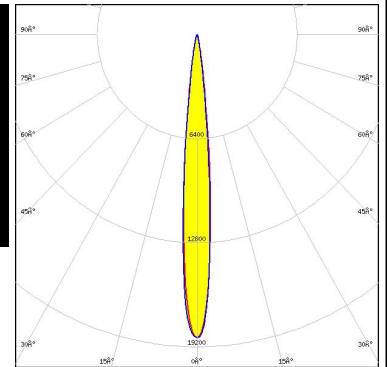
LED XP-L RGBW HD  
 FWHM / FWTM 11.0° / 20.0°  
 Efficiency 90 %  
 Peak intensity 18.3 cd/lm  
 LEDs/each optic 1  
 Light colour/type RGBW  
 Required components:



Light distribution files



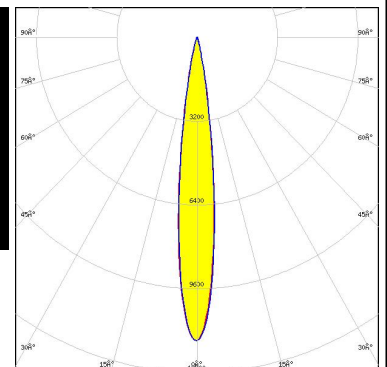
LED XP-L RGBW HI  
 FWHM / FWTM 10.0° / 19.0°  
 Efficiency 89 %  
 Peak intensity 18.8 cd/lm  
 LEDs/each optic 1  
 Light colour/type White  
 Required components:



Light distribution files



LED LUXEON 5050 Round LES  
 FWHM / FWTM 14.0° / 26.0°  
 Efficiency 91 %  
 Peak intensity 12.6 cd/lm  
 LEDs/each optic 1  
 Light colour/type White  
 Required components:

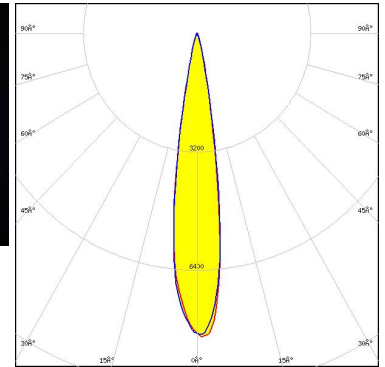


Light distribution files

#### OPTICAL RESULTS (MEASURED):



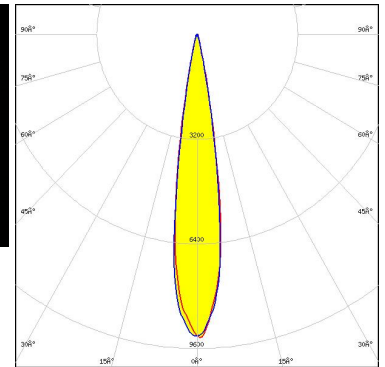
**LED** LUXEON C  
**FWHM / FWTM** 17.0° / 28.0°  
**Efficiency** 85 %  
**Peak intensity** 8.2 cd/lm  
**LEDs/each optic** 1  
**Light colour/type** RGBW  
**Required components:**



Light distribution files



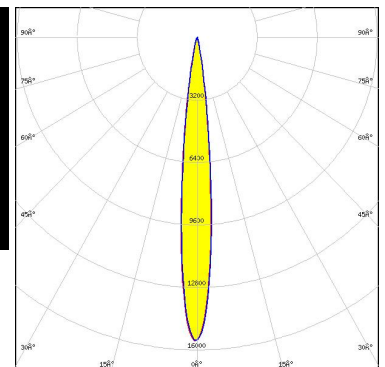
**LED** LUXEON CZ  
**FWHM / FWTM** 16.0° / 26.0°  
**Efficiency** 89 %  
**Peak intensity** 9.3 cd/lm  
**LEDs/each optic** 4  
**Light colour/type** RGBW  
**Required components:**



Light distribution files



**LED** LUXEON V  
**FWHM / FWTM** 11.0° / 22.0°  
**Efficiency** 89 %  
**Peak intensity** 15.5 cd/lm  
**LEDs/each optic** 1  
**Light colour/type** White  
**Required components:**

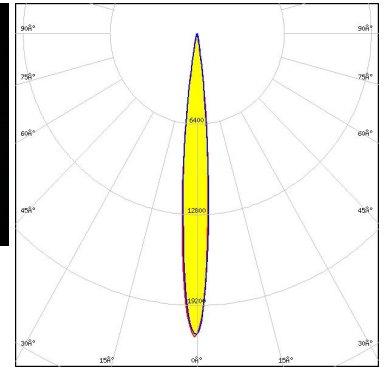


Light distribution files

#### OPTICAL RESULTS (MEASURED):



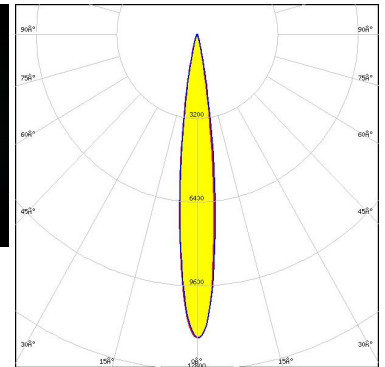
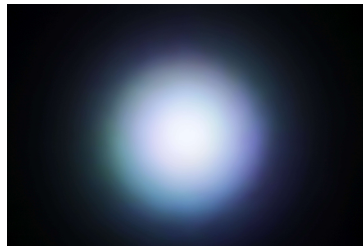
**LED** SBM-40-RGBW  
**FWHM / FWTM** 10.0° / 19.0°  
**Efficiency** 89 %  
**Peak intensity** 21.5 cd/lm  
**LEDs/each optic** 1  
**Light colour/type** White  
**Required components:**



Light distribution files



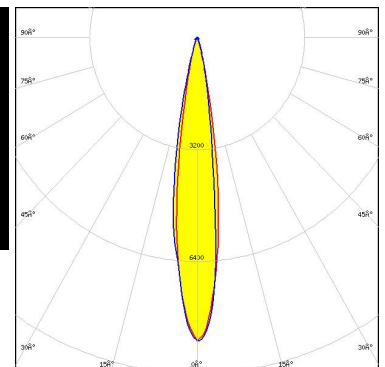
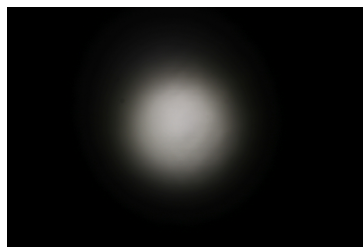
**LED** NCSxE17A  
**FWHM / FWTM** 13.0° / 26.0°  
**Efficiency** 92 %  
**Peak intensity** 11.6 cd/lm  
**LEDs/each optic** 4  
**Light colour/type** RGBW  
**Required components:**



Light distribution files



**LED** NVSW219F  
**FWHM / FWTM** 16.0° / 29.0°  
**Efficiency** 89 %  
**Peak intensity** 8.7 cd/lm  
**LEDs/each optic** 1  
**Light colour/type** White  
**Required components:**

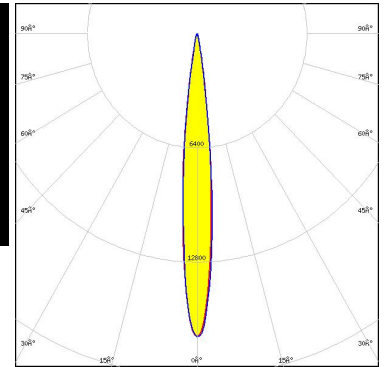
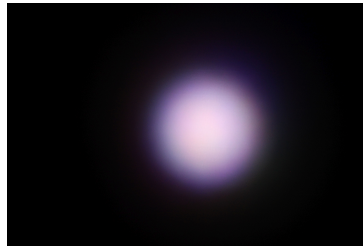


Light distribution files

#### OPTICAL RESULTS (MEASURED):

**OSRAM**  
Opto Semiconductors

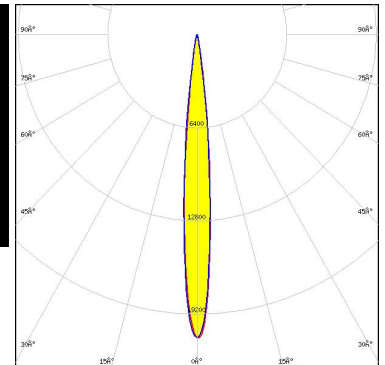
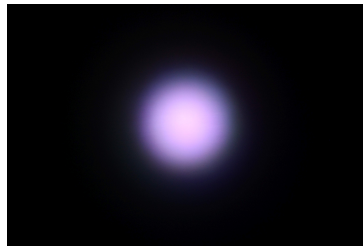
LED OSLON Pure 1414  
 FWHM / FWTM 11.0° / 20.0°  
 Efficiency 89 %  
 Peak intensity 17 cd/lm  
 LEDs/each optic 4  
 Light colour/type RGBW  
 Required components:



Light distribution files

**OSRAM**  
Opto Semiconductors

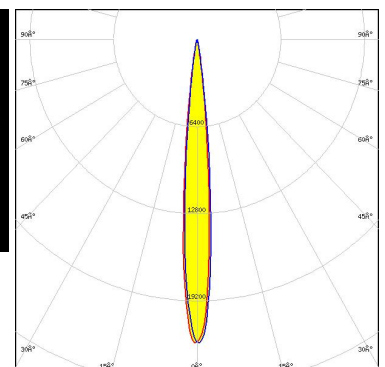
LED OSTAR Stage (S2WN)  
 FWHM / FWTM 10.0° / 19.0°  
 Efficiency 90 %  
 Peak intensity 20.8 cd/lm  
 LEDs/each optic 1  
 Light colour/type RGBW  
 Required components:



Light distribution files

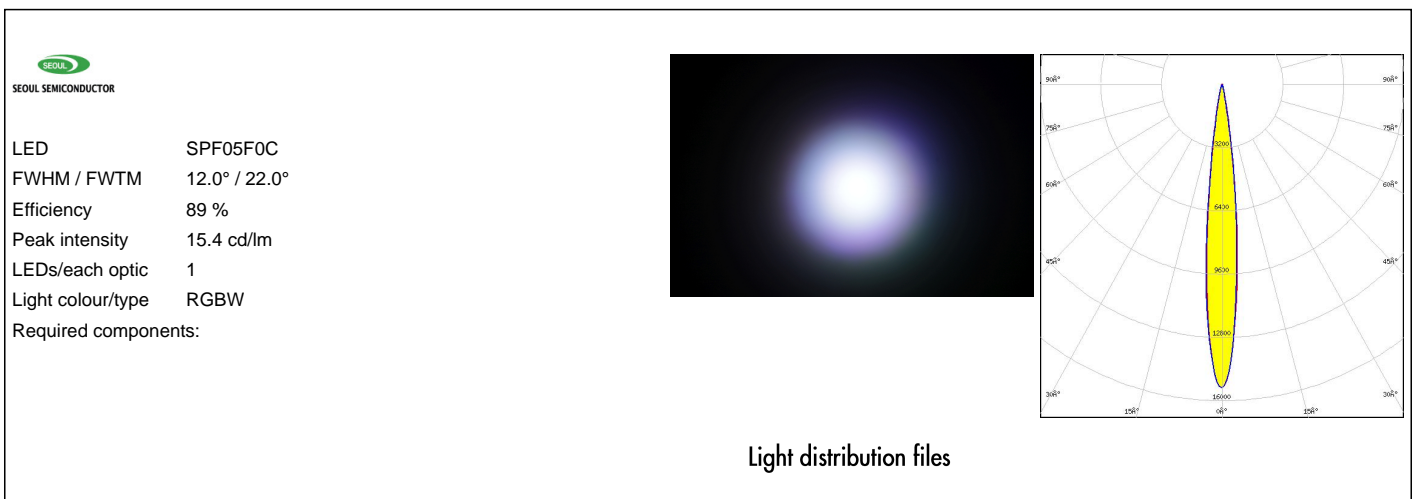
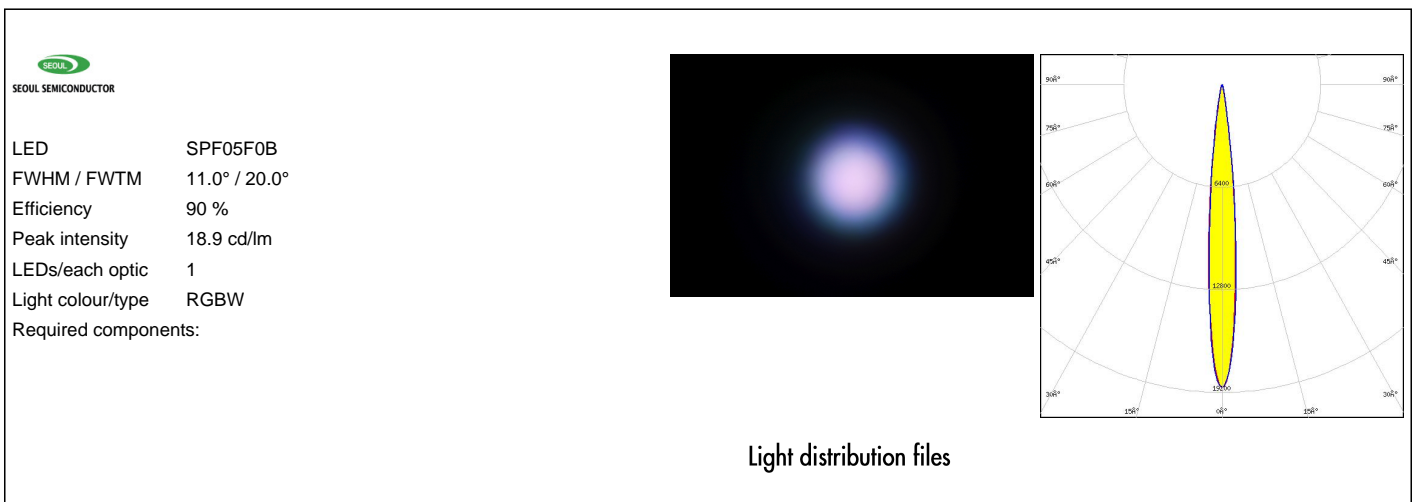
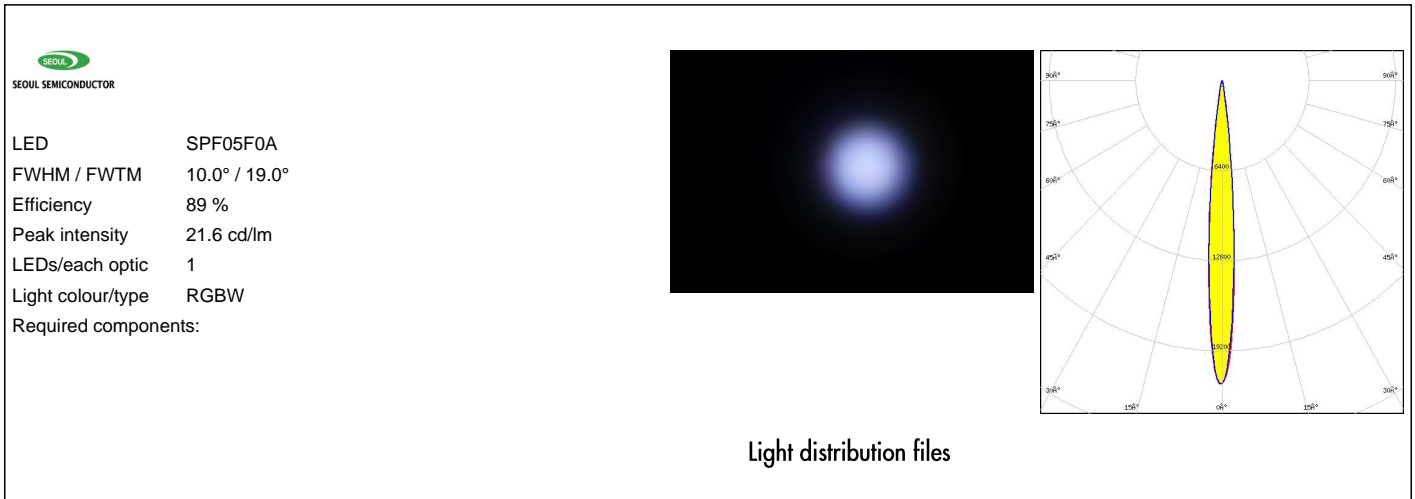
**OSRAM**  
Opto Semiconductors

LED OSTAR Stage (S2WP)  
 FWHM / FWTM 10.0° / 18.0°  
 Efficiency 91 %  
 Peak intensity 22 cd/lm  
 LEDs/each optic 1  
 Light colour/type White  
 Required components:



Light distribution files

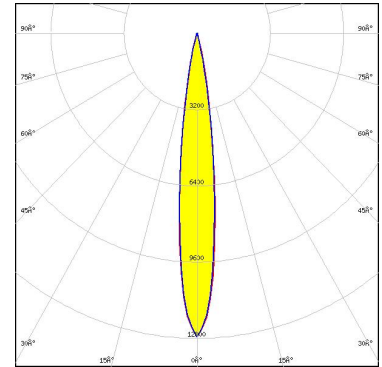
#### OPTICAL RESULTS (MEASURED):



#### OPTICAL RESULTS (SIMULATED):



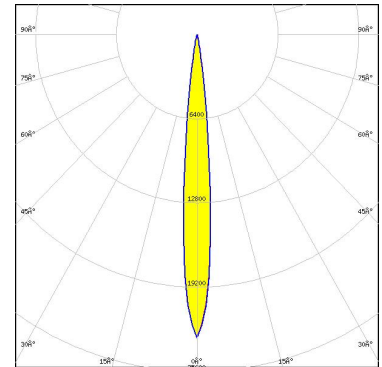
LED CLQ6A-TKW  
 FWHM / FWTM 13.7° / 26.1°  
 Efficiency 94 %  
 Peak intensity 12.7 cd/lm  
 LEDs/each optic 1  
 Light colour/type RGBW  
 Required components:



Light distribution files



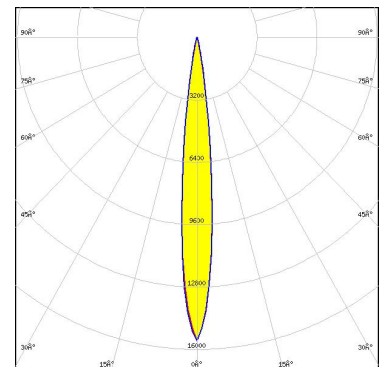
LED XE-G  
 FWHM / FWTM 10.0° / 18.0°  
 Efficiency 92 %  
 Peak intensity 23.1 cd/lm  
 LEDs/each optic 1  
 Light colour/type White  
 Required components:



Light distribution files



LED XHP35.2 HD  
 FWHM / FWTM 12.0° / 22.0°  
 Efficiency 88 %  
 Peak intensity 15.6 cd/lm  
 LEDs/each optic 1  
 Light colour/type White  
 Required components:

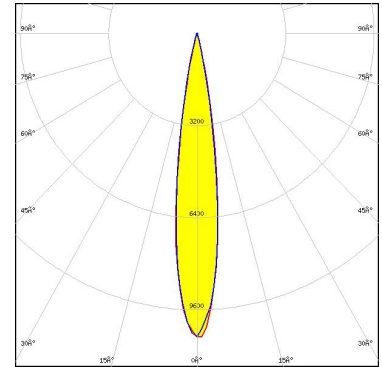


Light distribution files

#### OPTICAL RESULTS (SIMULATED):



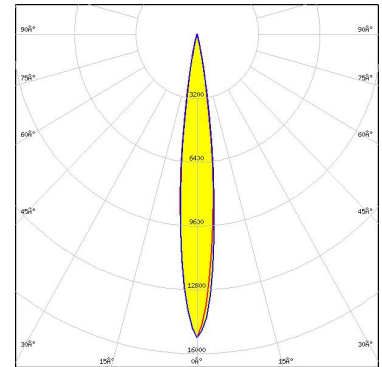
LED XHP50  
 FWHM / FWTM 16.0° / 27.0°  
 Efficiency 91 %  
 Peak intensity 10.7 cd/lm  
 LEDs/each optic 1  
 Light colour/type White  
 Required components:



Light distribution files



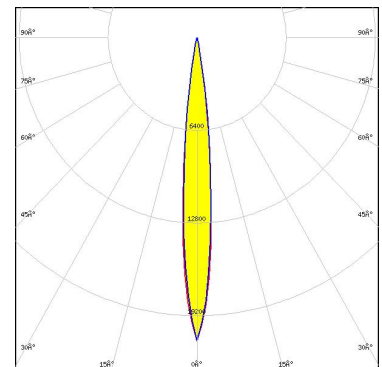
LED XM-L RGBW (XMLCTW)  
 FWHM / FWTM 13.0° / 23.0°  
 Efficiency 93 %  
 Peak intensity 15.2 cd/lm  
 LEDs/each optic 1  
 Light colour/type RGBW  
 Required components:



Light distribution files



LED XM-L RGBW (XMLDCL HI)  
 FWHM / FWTM 11.0° / 20.0°  
 Efficiency 93 %  
 Peak intensity 20.9 cd/lm  
 LEDs/each optic 1  
 Light colour/type RGBW  
 Required components:



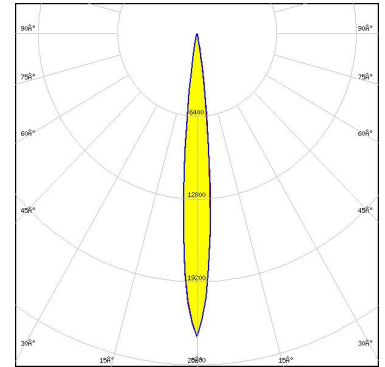
Light distribution files



#### OPTICAL RESULTS (SIMULATED):



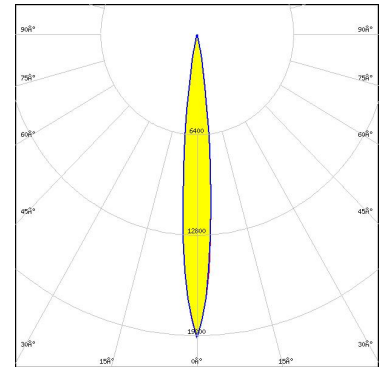
LED XP-E2  
 FWHM / FWTM 10.0° / 19.0°  
 Efficiency 92 %  
 Peak intensity 23.5 cd/lm  
 LEDs/each optic 1  
 Light colour/type Amber  
 Required components:



Light distribution files



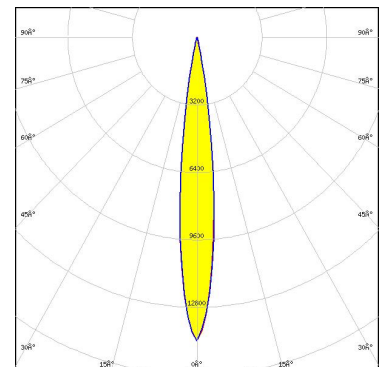
LED XP-G2 HE  
 FWHM / FWTM 11.0° / 22.0°  
 Efficiency 92 %  
 Peak intensity 19.4 cd/lm  
 LEDs/each optic 1  
 Light colour/type White  
 Required components:



Light distribution files



LED XQ-E HI  
 FWHM / FWTM 14.0° / 24.0°  
 Efficiency 90 %  
 Peak intensity 14.4 cd/lm  
 LEDs/each optic 4  
 Light colour/type RGBW  
 Required components:

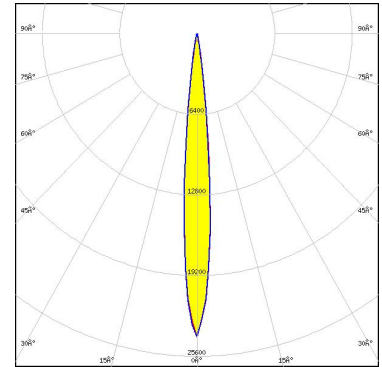


Light distribution files

#### OPTICAL RESULTS (SIMULATED):



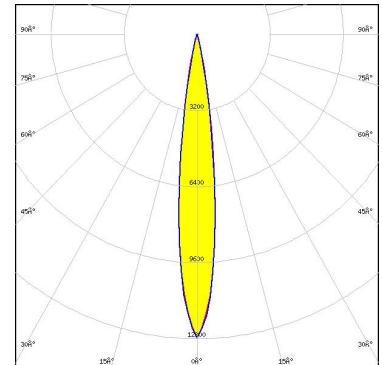
LED XT-E  
 FWHM / FWTM 10.0° / 19.0°  
 Efficiency 91 %  
 Peak intensity 24.1 cd/lm  
 LEDs/each optic 1  
 Light colour/type White  
 Required components:



Light distribution files



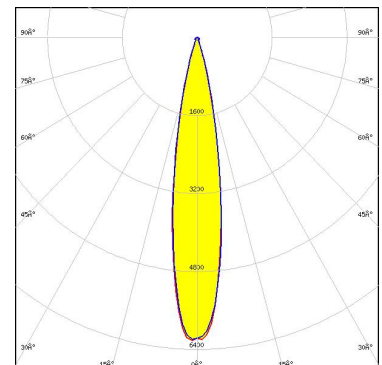
LED LUXEON 5050 Round LES  
 FWHM / FWTM 14.0° / 26.0°  
 Efficiency 92 %  
 Peak intensity 12.8 cd/lm  
 LEDs/each optic 1  
 Light colour/type White  
 Required components:



Light distribution files



LED LUXEON 7070  
 FWHM / FWTM 18.0° / 34.0°  
 Efficiency 90 %  
 Peak intensity 6.3 cd/lm  
 LEDs/each optic 1  
 Light colour/type White  
 Required components:

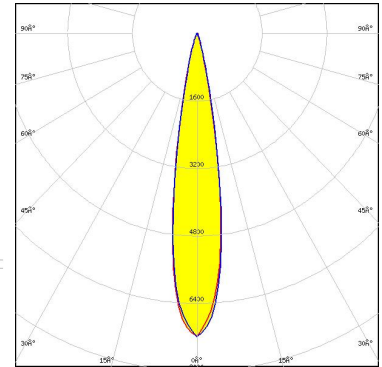
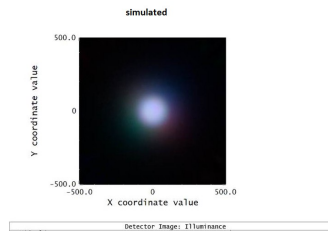


Light distribution files

#### OPTICAL RESULTS (SIMULATED):



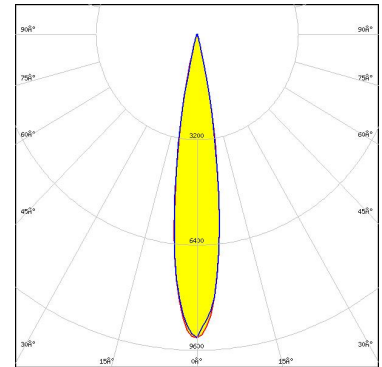
**LED** LUXEON C  
**FWHM / FWTM** 18.0 + °  
**Efficiency** 86 %  
**Peak intensity** 7.2 cd/lm  
**LEDs/each optic** 4  
**Light colour/type** RGBW  
**Required components:**



Light distribution files



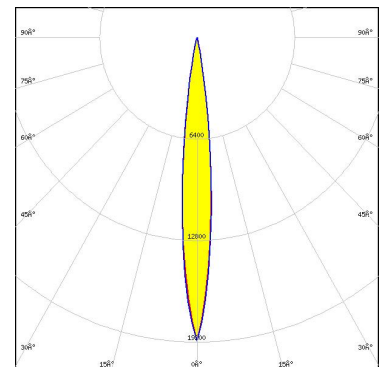
**LED** LUXEON M/MX  
**FWHM / FWTM** 17.0° / 28.0°  
**Efficiency** 91 %  
**Peak intensity** 9.3 cd/lm  
**LEDs/each optic** 1  
**Light colour/type** White  
**Required components:**



Light distribution files



**LED** LUXEON Rubix  
**FWHM / FWTM** 12.0° / 21.0°  
**Efficiency** 92 %  
**Peak intensity** 19.1 cd/lm  
**LEDs/each optic** 4  
**Light colour/type** RGBW  
**Required components:**

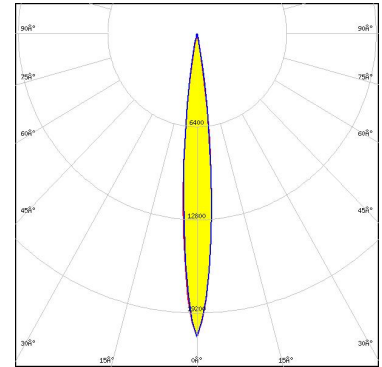


Light distribution files

#### OPTICAL RESULTS (SIMULATED):



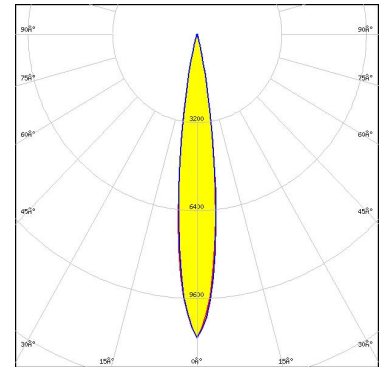
LED LUXEON Z  
 FWHM / FWTM 11.0° / 20.0°  
 Efficiency 91 %  
 Peak intensity 21 cd/lm  
 LEDs/each optic 4  
 Light colour/type RGBW  
 Required components:



Light distribution files



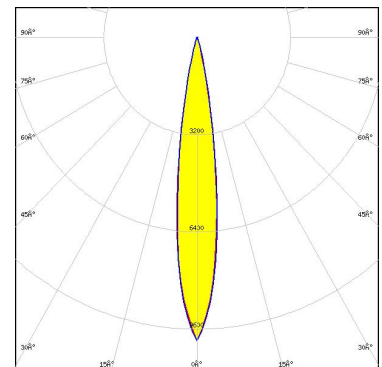
LED NCSxE17A  
 FWHM / FWTM 14.0° / 26.0°  
 Efficiency 87 %  
 Peak intensity 11 cd/lm  
 LEDs/each optic 4  
 Light colour/type RGBW  
 Required components:



Light distribution files



LED NV4x144A  
 FWHM / FWTM 16.0° / 28.0°  
 Efficiency 89 %  
 Peak intensity 10 cd/lm  
 LEDs/each optic 1  
 Light colour/type White  
 Required components:

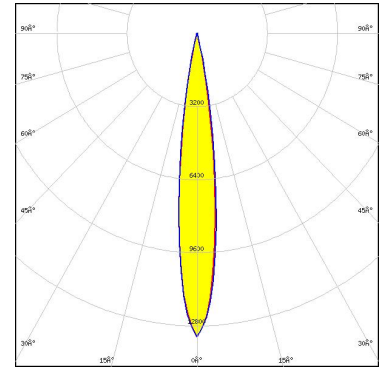


Light distribution files

#### OPTICAL RESULTS (SIMULATED):

**OSRAM**  
Opto Semiconductors

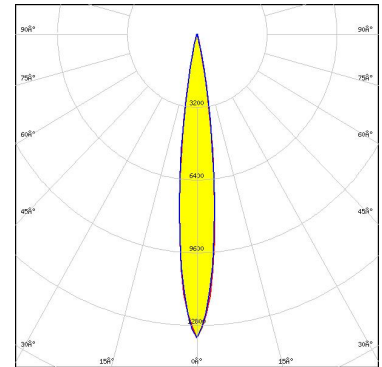
LED DURIS E 5050 (GW J9LHS1.4M)  
 FWHM / FWTM 14.0° / 24.0 + 26.0°  
 Efficiency 93 %  
 Peak intensity 13.3 cd/lm  
 LEDs/each optic 1  
 Light colour/type RGBW  
 Required components:



Light distribution files

**OSRAM**  
Opto Semiconductors

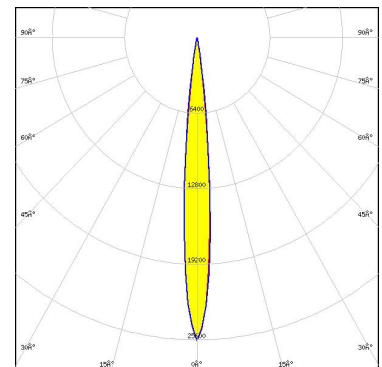
LED Duris S8  
 FWHM / FWTM 14.0° / 25.0°  
 Efficiency 92 %  
 Peak intensity 13.5 cd/lm  
 LEDs/each optic 1  
 Light colour/type White  
 Required components:



Light distribution files

**OSRAM**  
Opto Semiconductors

LED OSCONIQ P 3737 (2W version)  
 FWHM / FWTM 10.0° / 19.0°  
 Efficiency 94 %  
 Peak intensity 25.7 cd/lm  
 LEDs/each optic 1  
 Light colour/type White  
 Required components:

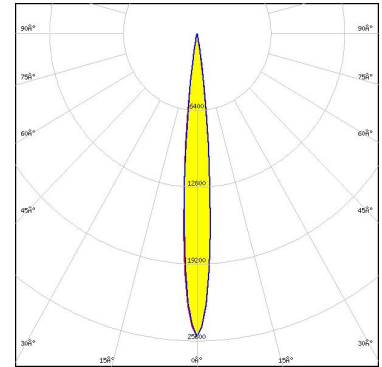


Light distribution files

#### OPTICAL RESULTS (SIMULATED):

**OSRAM**  
Opto Semiconductors

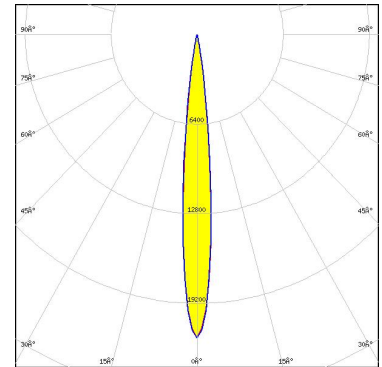
LED OSLON Square CSSRM2/CSSRM3  
FWHM / FWTM 10.0° / 19.0°  
Efficiency 93 %  
Peak intensity 25.3 cd/lm  
LEDs/each optic 1  
Light colour/type White  
Required components:



Light distribution files

**SAMSUNG**

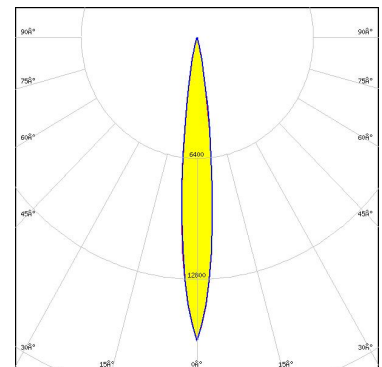
LED LH351B  
FWHM / FWTM 11.0° / 20.0°  
Efficiency 93 %  
Peak intensity 21.7 cd/lm  
LEDs/each optic 1  
Light colour/type White  
Required components:



Light distribution files

**SAMSUNG**

LED LH351D  
FWHM / FWTM 12.0° / 24.0°  
Efficiency 92 %  
Peak intensity 16.1 cd/lm  
LEDs/each optic 1  
Light colour/type White  
Required components:

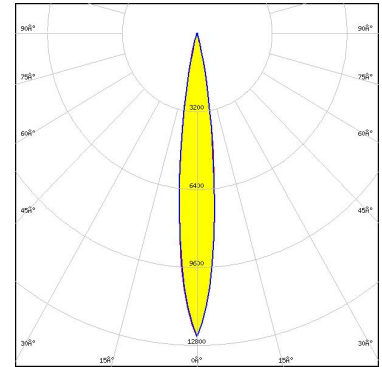


Light distribution files

#### OPTICAL RESULTS (SIMULATED):

### SAMSUNG

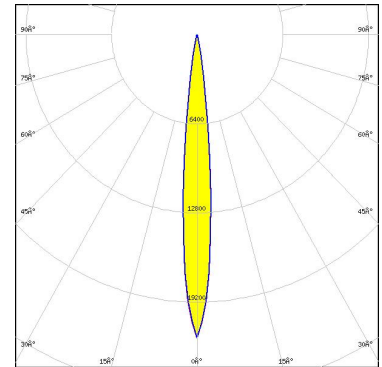
LED LH502D  
 FWHM / FWTM 14.0° / 26.0°  
 Efficiency 92 %  
 Peak intensity 12.4 cd/lm  
 LEDs/each optic 1  
 Light colour/type White  
 Required components:



Light distribution files

### SAMSUNG

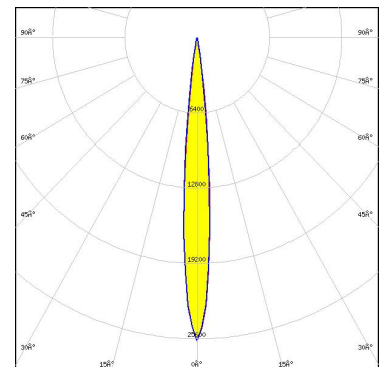
LED LM28xB Series  
 FWHM / FWTM 10.0° / 20.0°  
 Efficiency 93 %  
 Peak intensity 21.8 cd/lm  
 LEDs/each optic 1  
 Light colour/type White  
 Required components:



Light distribution files



LED Z5M1/Z5M2  
 FWHM / FWTM 10.0° / 19.0°  
 Efficiency 93 %  
 Peak intensity 25.8 cd/lm  
 LEDs/each optic 1  
 Light colour/type White  
 Required components:



Light distribution files



#### GENERAL INFORMATION:

NOTE: The typical beam angle will be changed by different color, chip size and chip position tolerance. The typical total beam angle is the full angle measured where the luminous intensity is half of the peak value.

#### MATERIALS:

As part of our continuous research and improvement processes, and to ensure the best possible quality and availability of our products, LEDiL reserves the right to change material grades without notice.

#### PRODUCT DATA USER AGREEMENT AND DISCLAIMER:

The measured data in the provided downloadable LEDiL Product Datasheets and Mechanical 2D-Drawings is rounded and provided as reference for planning. LEDiL Oy's optical specifications have been verified by conducting performance testing of the products in accordance with the company's quality system. The reported data are averaged results of multiple measurements with typical variation. LEDiL Oy reserves the right to without prior notification make changes and improvements to its products.

LEDiL Oy assumes neither warranty, nor guarantee nor any other liability of any kind for the contents and correctness of the provided data. The provided data has been generated with highest diligence but the provided data may in reality not represent the complete possible variation range of all intrinsic parameters. Therefore, in certain cases a deviation from the provided data could occur.

LEDiL Oy reserves the right to undertake technical changes of its products without further notification which could lead to changes in the provided data. LEDiL Oy assumes no liability of any kind for the possible deviation from any provided data or any other damage resulting from the usage of the provided data.

The user agrees to this disclaimer and user agreement with the download or usage of the provided files.

#### LEDiL Oy

Joensuunkatu 7  
FI-24100 SALO  
Finland

#### LEDiL Inc.

228 West Page Street  
Suite D  
Sycamore IL 60178  
USA

#### Ledil Optics Technology (Shenzhen) Co., Ltd.

# 405 , Block B  
Casic Motor Building  
Shenzhen 518057  
P.R.CHINA

#### Local sales and technical support

[www.ledil.com/  
where\\_to\\_buy](http://www.ledil.com/where_to_buy)

#### Shipping locations

Poznan, Poland  
Hong Kong, China

#### Distribution Partners

[www.ledil.com/  
where\\_to\\_buy](http://www.ledil.com/where_to_buy)