

## LXP3-RS

~9.6° spot beam optimized for CREE XP-E. 14.7 mm high assembly.

### SPECIFICATION:

Dimensions	Ø 21.6
Height	14.7 mm
Fastening	glue
ROHS compliant	yes ⓘ

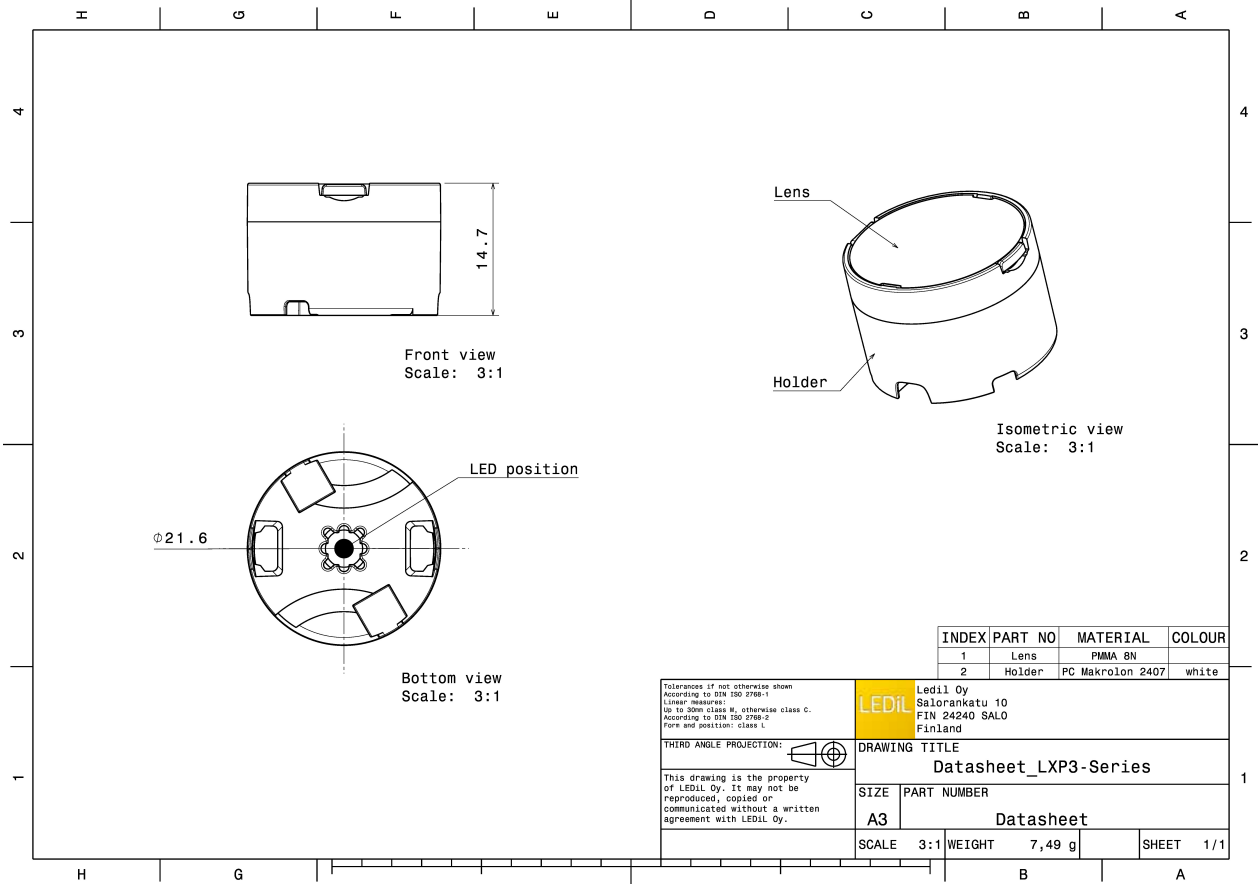


### MATERIALS:

Component	Type	Material	Colour	Finish	Length (mm)
LXP2-RS	Single lens	PMMA	clear		
LXP3-LH1-WHT	Holder	PC	white		

### ORDERING INFORMATION:

Component		Qty in box	MOQ	MPQ	Box weight (kg)
CP11631_LXP3-RS	Single lens	1680	0	112	0.0
» Box size: 480 x 280 x 300 mm					

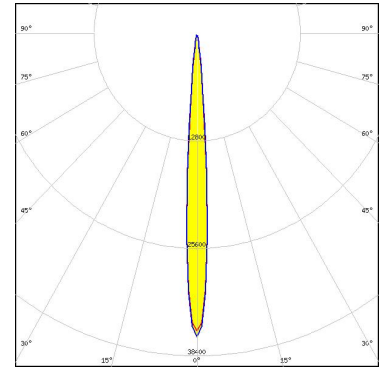


See also our general installation guide: [www.ledil.com/installation\\_guide](http://www.ledil.com/installation_guide)

### OPTICAL RESULTS (MEASURED):



LED XP-E  
 FWHM / FWTM 7.0°  
 Efficiency 94 %  
 Peak intensity 36 cd/lm  
 LEDs/each optic 1  
 Light colour/type White  
 Required components:



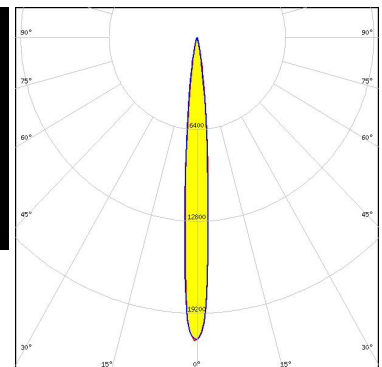
Light distribution files



LED XP-G  
 FWHM / FWTM 10.0°  
 Efficiency 92 %  
 Peak intensity 16.5 cd/lm  
 LEDs/each optic 1  
 Light colour/type White  
 Required components:



LED XP-L HI  
 FWHM / FWTM 9.0° / 20.0°  
 Efficiency 93 %  
 Peak intensity 21 cd/lm  
 LEDs/each optic 1  
 Light colour/type White  
 Required components:

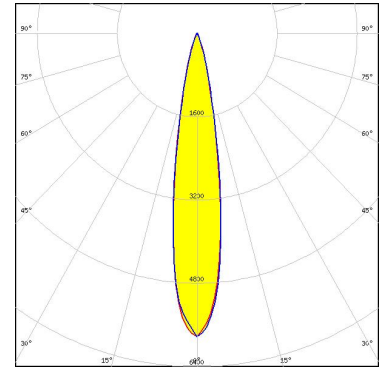


Light distribution files

#### OPTICAL RESULTS (SIMULATED):



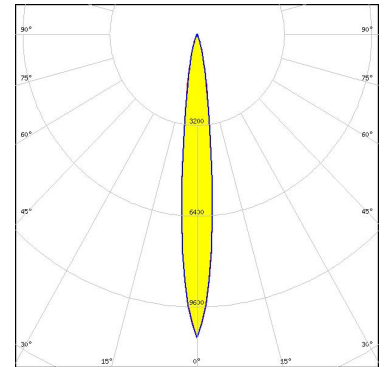
LED XHP35.2 HD  
 FWHM / FWTM 18.0° / 34.0°  
 Efficiency 78 %  
 Peak intensity 5.8 cd/lm  
 LEDs/each optic 1  
 Light colour/type White  
 Required components:



Light distribution files



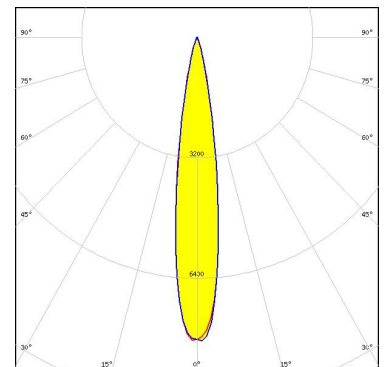
LED XHP35.2 HI  
 FWHM / FWTM 12.0° / 28.0°  
 Efficiency 86 %  
 Peak intensity 10.7 cd/lm  
 LEDs/each optic 1  
 Light colour/type White  
 Required components:



Light distribution files



LED XP-L2  
 FWHM / FWTM 16.0° / 30.0°  
 Efficiency 86 %  
 Peak intensity 8.1 cd/lm  
 LEDs/each optic 1  
 Light colour/type White  
 Required components:

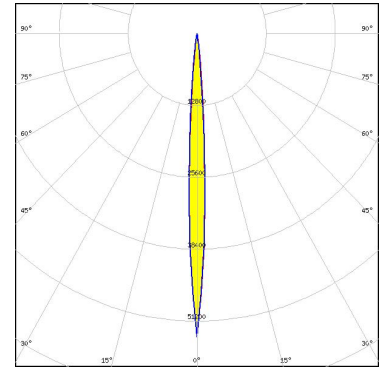


Light distribution files

#### OPTICAL RESULTS (SIMULATED):



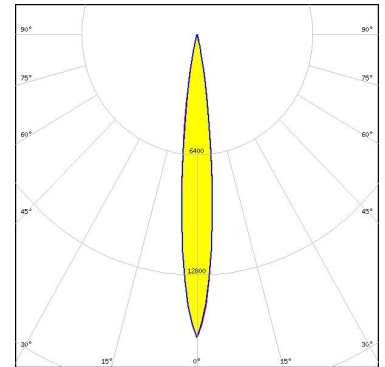
LED LUXEON CZ  
 FWHM / FWTM 6.0° / 14.0°  
 Efficiency 95 %  
 Peak intensity 54 cd/m  
 LEDs/each optic 1  
 Light colour/type Red  
 Required components:



Light distribution files



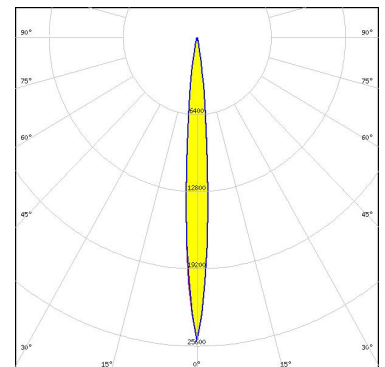
LED LUXEON HL2X  
 FWHM / FWTM 12.0° / 24.0°  
 Efficiency 93 %  
 Peak intensity 16.1 cd/m  
 LEDs/each optic 1  
 Light colour/type White  
 Required components:



Light distribution files




LED SST-20 Gen1  
 FWHM / FWTM 8.0° / 18.0°  
 Efficiency 95 %  
 Peak intensity 25.2 cd/m  
 LEDs/each optic 1  
 Light colour/type White  
 Required components:



Light distribution files

## OPTICAL RESULTS (SIMULATED):

 SEOL SEMICONDUCTOR	
LED	Z5
FWHM / FWTM	10.0°
Efficiency	%
LEDs/each optic	1
Light colour/type	White
Required components:	

### GENERAL INFORMATION:

NOTE: The typical beam angle will be changed by different color, chip size and chip position tolerance. The typical total beam angle is the full angle measured where the luminous intensity is half of the peak value.

### MATERIALS:

As part of our continuous research and improvement processes, and to ensure the best possible quality and availability of our products, LEDiL reserves the right to change material grades without notice.

### PRODUCT DATA USER AGREEMENT AND DISCLAIMER:

The measured data in the provided downloadable LEDiL Product Datasheets and Mechanical 2D-Drawings is rounded and provided as reference for planning. LEDiL Oy's optical specifications have been verified by conducting performance testing of the products in accordance with the company's quality system. The reported data are averaged results of multiple measurements with typical variation. LEDiL Oy reserves the right to without prior notification make changes and improvements to its products.

LEDiL Oy assumes neither warranty, nor guarantee nor any other liability of any kind for the contents and correctness of the provided data. The provided data has been generated with highest diligence but the provided data may in reality not represent the complete possible variation range of all intrinsic parameters. Therefore, in certain cases a deviation from the provided data could occur.

LEDiL Oy reserves the right to undertake technical changes of its products without further notification which could lead to changes in the provided data. LEDiL Oy assumes no liability of any kind for the possible deviation from any provided data or any other damage resulting from the usage of the provided data.

The user agrees to this disclaimer and user agreement with the download or usage of the provided files.

#### LEDiL Oy

Joensuunkatu 7  
FI-24100 SALO  
Finland

#### LEDiL Inc.

228 West Page Street  
Suite D  
Sycamore IL 60178  
USA

#### Ledil Optics Technology (Shenzhen) Co., Ltd.

# 405 , Block B  
Casic Motor Building  
Shenzhen 518057  
P.R.CHINA

#### Local sales and technical support

[www.ledil.com/  
where\\_to\\_buy](http://www.ledil.com/where_to_buy)

#### Shipping locations

Poznan, Poland  
Hong Kong, China

#### Distribution Partners

[www.ledil.com/  
where\\_to\\_buy](http://www.ledil.com/where_to_buy)