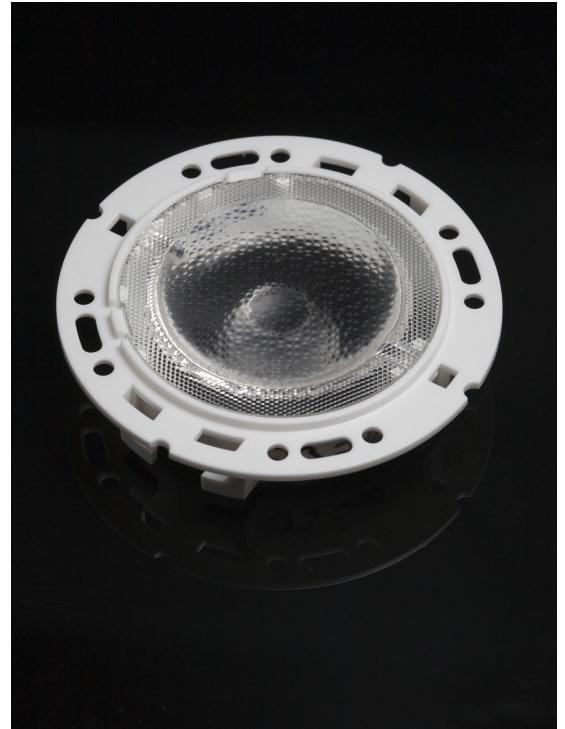


RONDA-WW

~60° wide beam with holder A compatible with 3rd party connectors from TE, Bender+Wirth and IDEAL

SPECIFICATION:

Dimensions	Ø 69.9
Height	14.6 mm
Fastening	socket
ROHS compliant	yes ⓘ



MATERIALS:

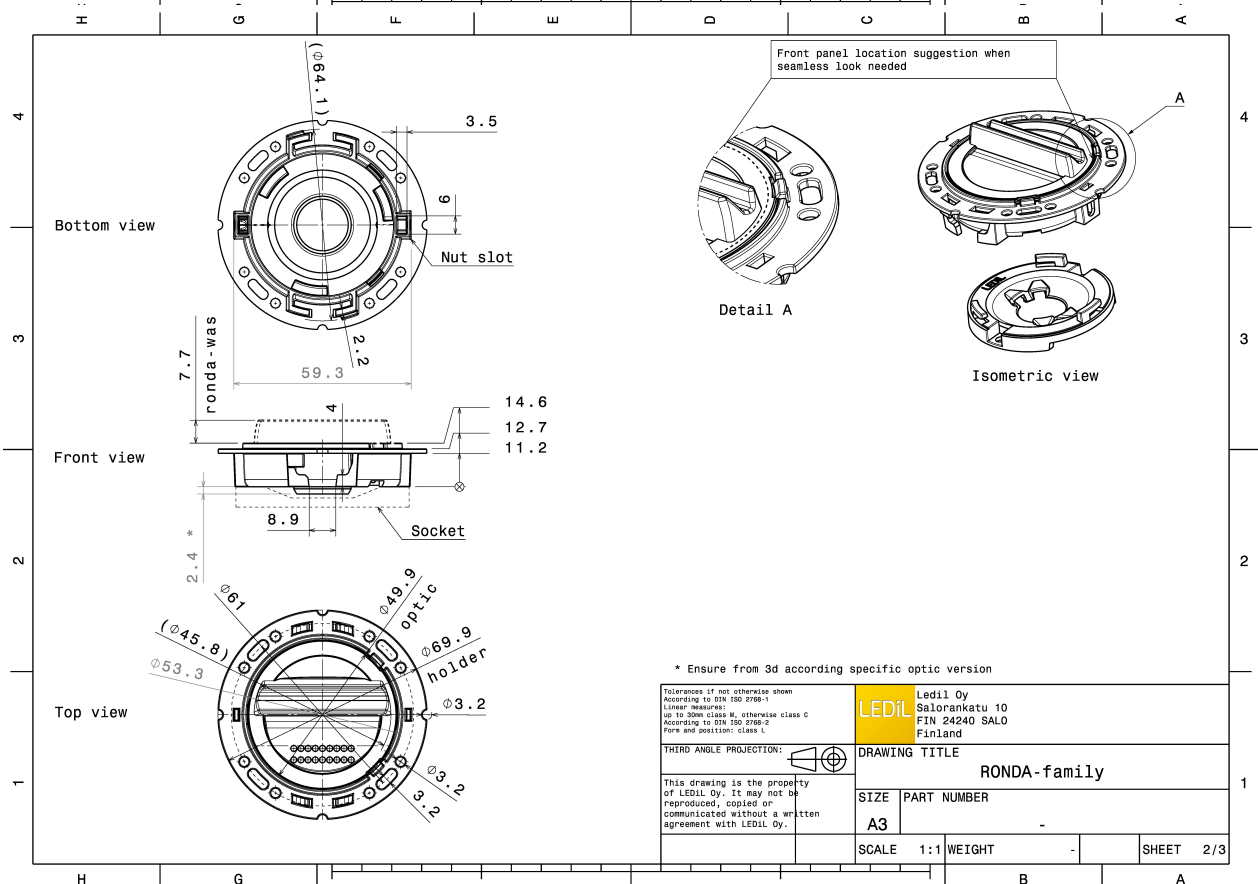
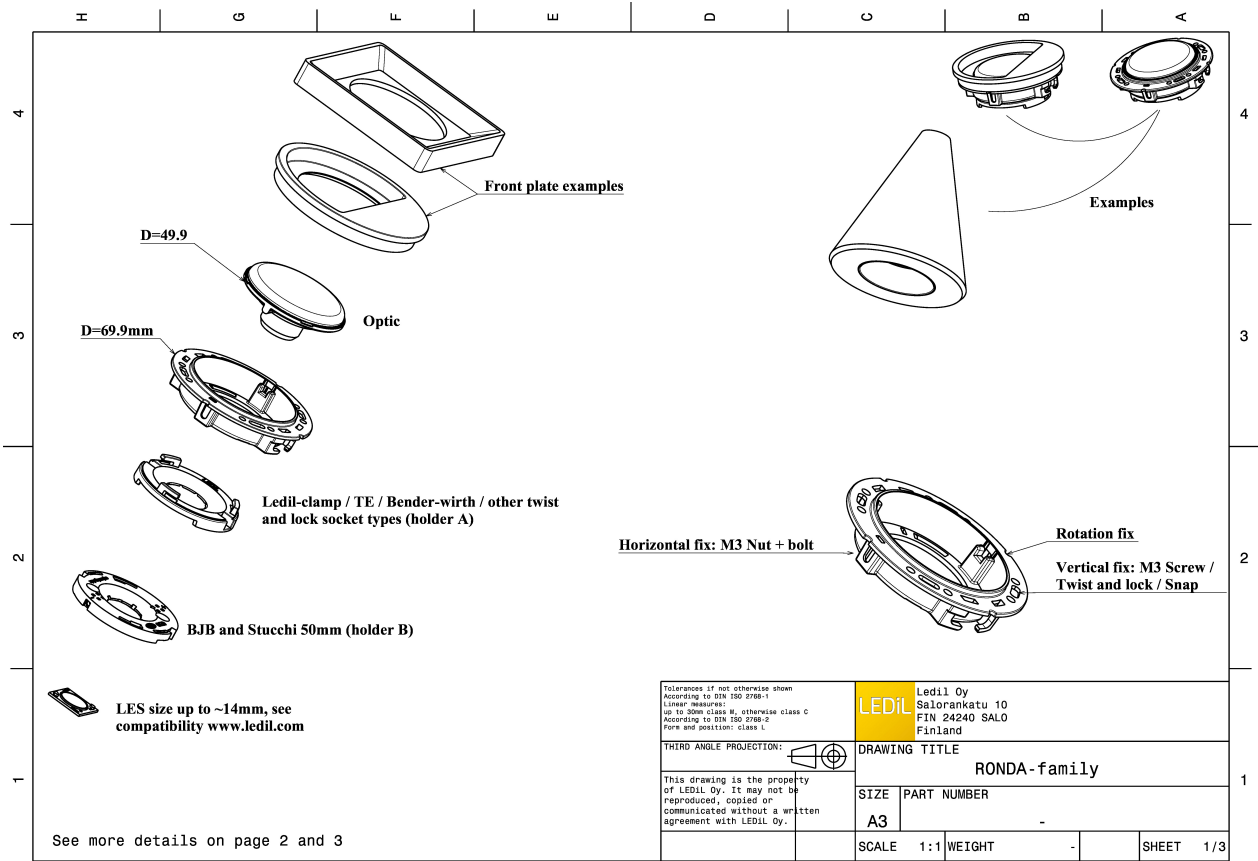
Component	Type	Material	Colour	Finish	Length (mm)
F15282_RONDA-WW	Single lens	PMMA	clear		
F15155_RONDA-HLD-A	Holder	PC	white		

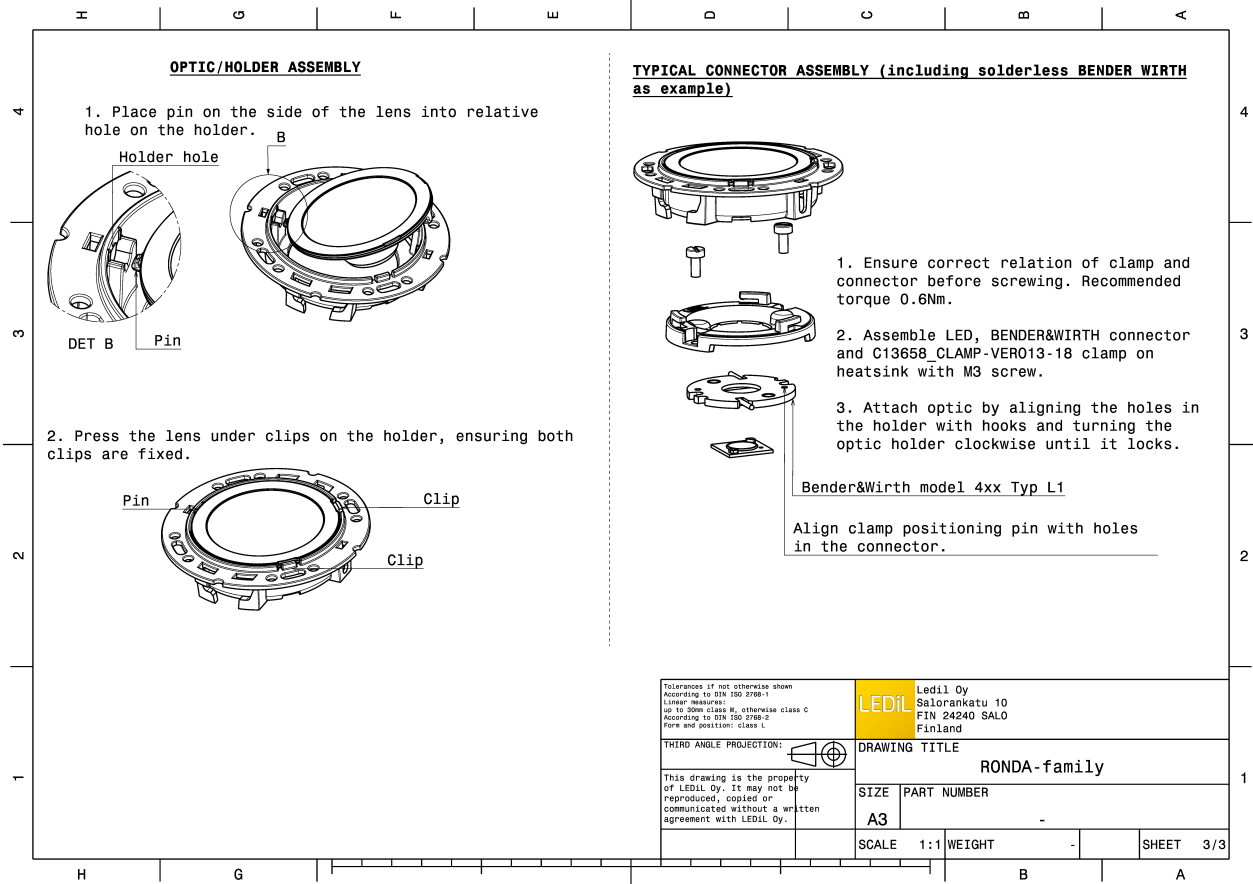
ORDERING INFORMATION:

Quantities for one set:

Single lens	1
Holder	1

Component		Qty in box	MOQ	MPQ	Box weight (kg)
F15282_RONDA-WW	Single lens	420	120	30	7.2
» Box size: 480 x 280 x 300 mm					
F15155_RONDA-HLD-A	Holder	420	120	30	4.4
» Box size: 480 x 280 x 300 mm					



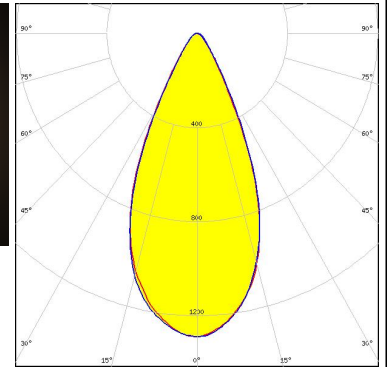


See also our general installation guide: www.ledil.com/installation_guide

OPTICAL RESULTS (MEASURED):

bridgelux

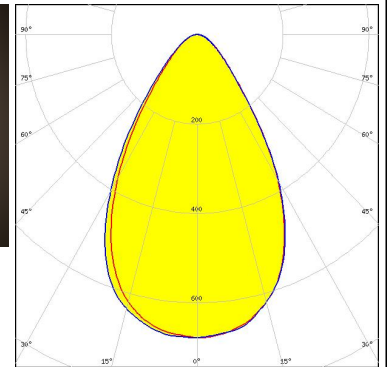
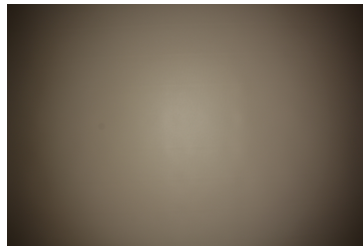
LED V10 Gen7
 FWHM / FWTM 47.0° / 74.0°
 Efficiency %
 LEDs/each optic 1
 Light colour/type White
 Required components:
 C13658_CLAMP-VERO13-18
 Bender Wirth: 486 Typ L1



Light distribution files

bridgelux

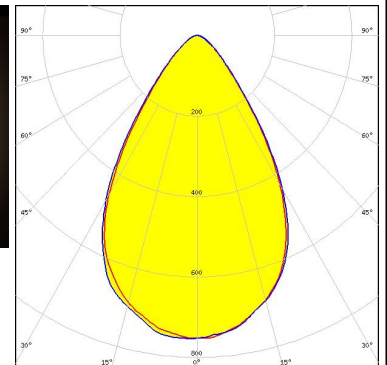
LED V13 Gen7
 FWHM / FWTM 64.0° / 105.0°
 Efficiency 82 %
 Peak intensity 0.7 cd/lm
 LEDs/each optic 1
 Light colour/type White
 Required components:
 TE Connectivity: 2213254-2 + OPTIC CLIP Z50 TYPE1 2213194-1



Light distribution files

bridgelux

LED Vero SE 13
 FWHM / FWTM 65.0° / 100.0°
 Efficiency 90 %
 Peak intensity 0.8 cd/lm
 LEDs/each optic 1
 Light colour/type White
 Required components:
 C16402_CLAMP-VEROSE-13-18

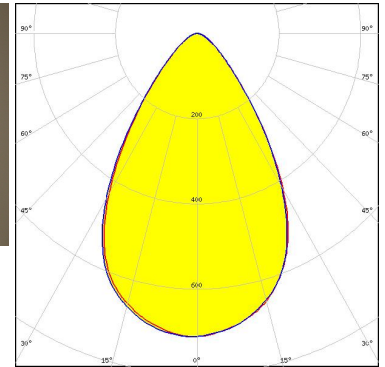
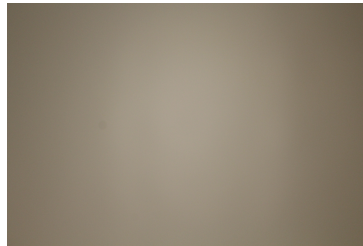


Light distribution files

OPTICAL RESULTS (MEASURED):



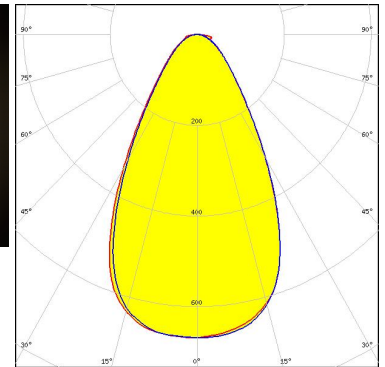
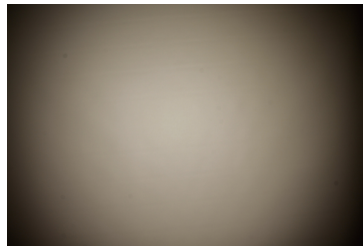
LED VERO13
FWHM / FWTM 66.0° / 103.0°
Efficiency 88 %
Peak intensity 0.7 cd/lm
LEDs/each optic 1
Light colour/type White
Required components:
 C13658_CLAMP-VERO13-18



Light distribution files

CITIZEN

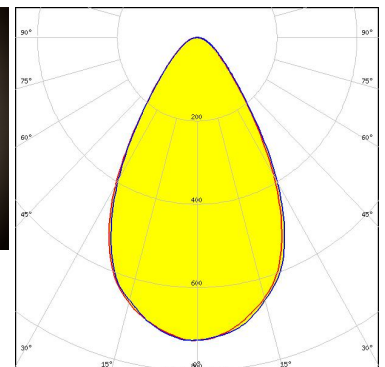
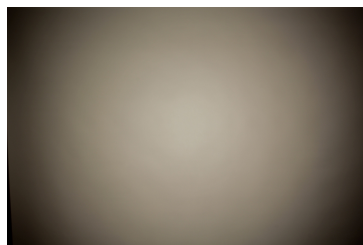
LED CLL03x/CLU03x
FWHM / FWTM 59.0° / 110.0°
Efficiency 81 %
Peak intensity 0.7 cd/lm
LEDs/each optic 1
Light colour/type White
Required components:
 IDEAL: 50-2103CT + 50-2100AN



Light distribution files

CITIZEN

LED CLL03x/CLU03x
FWHM / FWTM 63.0° / 105.0°
Efficiency 87 %
Peak intensity 0.7 cd/lm
LEDs/each optic 1
Light colour/type White
Required components:
 C16791_CLAMP-Z45-A
 TE Connectivity: 2325807-3

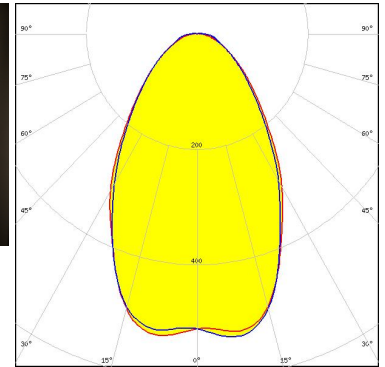
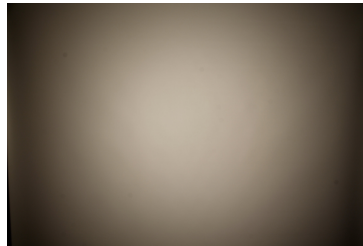


Light distribution files

OPTICAL RESULTS (MEASURED):

CITIZEN

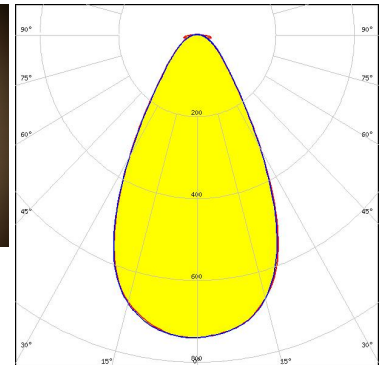
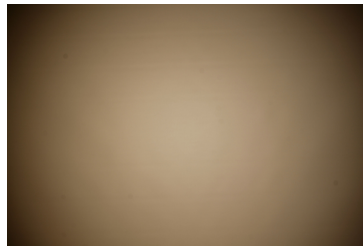
LED CLL04x/CLU04x
 FWHM / FWTM 66.0° / 130.0°
 Efficiency 81 %
 Peak intensity 0.5 cd/lm
 LEDs/each optic 1
 Light colour/type White
 Required components:
 IDEAL: 50-2204-CT + 50-2100AN



Light distribution files

CITIZEN

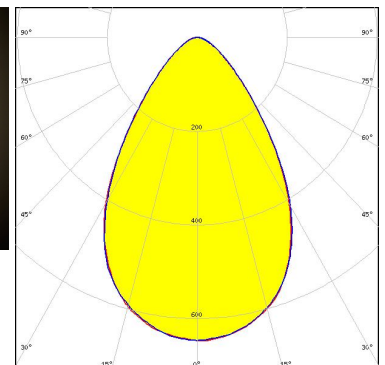
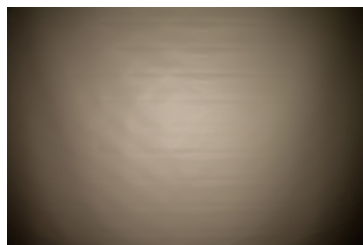
LED CLU730/731/733
 FWHM / FWTM 58.0° / 103.0°
 Efficiency 83 %
 Peak intensity 0.7 cd/lm
 LEDs/each optic 1
 Light colour/type White
 Required components:
 IDEAL: 50-2204-CT + 50-2100AN



Light distribution files



LED CMA1840
 FWHM / FWTM 69.0° / 112.0°
 Efficiency 89 %
 Peak intensity 0.7 cd/lm
 LEDs/each optic 1
 Light colour/type White
 Required components:
 C14123_CLAMP-CXA15-18

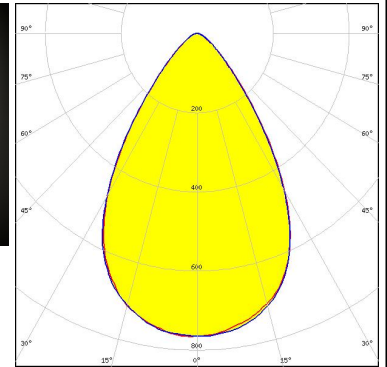
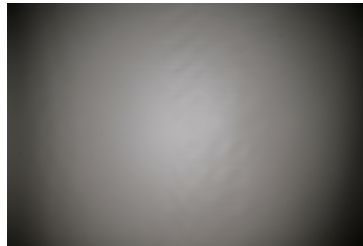


Light distribution files

OPTICAL RESULTS (MEASURED):



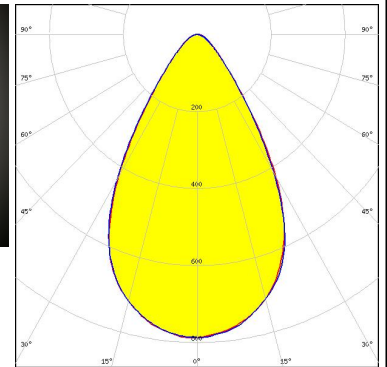
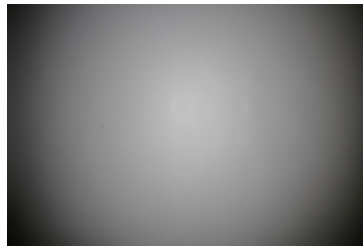
LED CXA/B 1816 & CXA/B 1820 & CXA 1850
 FWHM / FWTM 66.0° / 100.0°
 Efficiency 93 %
 Peak intensity 0.8 cd/lm
 LEDs/each optic 1
 Light colour/type White
 Required components:
 C14123_CLAMP-CXA15-18



Light distribution files



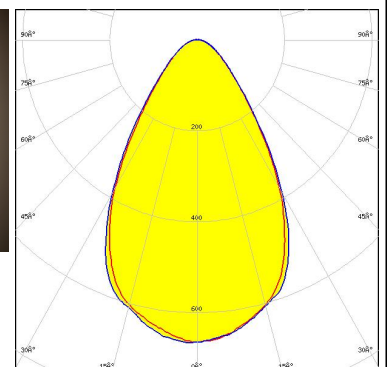
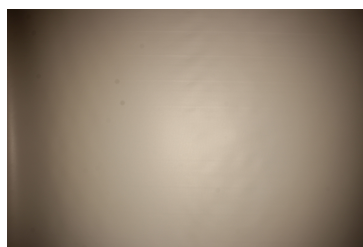
LED CXA/B 1816 & CXA/B 1820 & CXA 1850
 FWHM / FWTM 62.0° / 97.0°
 Efficiency 88 %
 Peak intensity 0.8 cd/lm
 LEDs/each optic 1
 Light colour/type White
 Required components:
 TE Connectivity: 2213401-2 + OPTIC CLIP Z50 TYPE1 2213194-1



Light distribution files



LED PrevaLED Core G7 L15 H1
 FWHM / FWTM 65.0° / 111.0°
 Efficiency 86 %
 Peak intensity 0.7 cd/lm
 LEDs/each optic 1
 Light colour/type White
 Required components:
 C16685_CLAMP-PRV-A

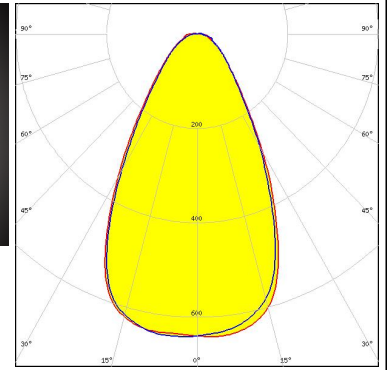


Light distribution files

OPTICAL RESULTS (MEASURED):



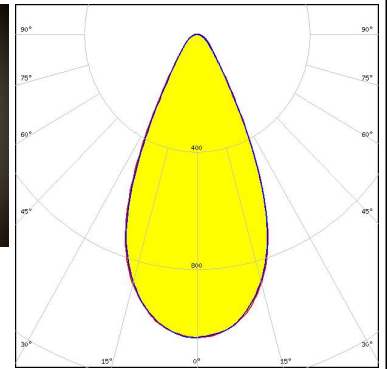
LED COB J-Type
FWHM / FWTM 60.0° / 113.0°
Efficiency 81 %
Peak intensity 0.6 cd/lm
LEDs/each optic 1
Light colour/type White
Required components:
 IDEAL: 50-2103NC + 50-2100AN



Light distribution files



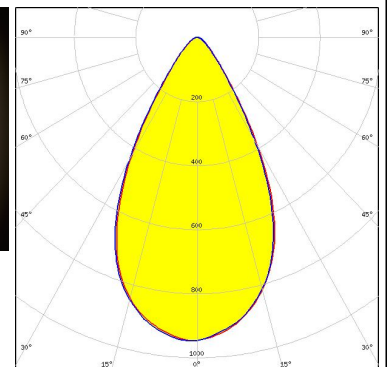
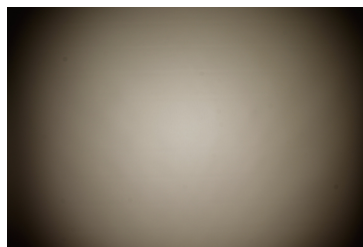
LED COB L-Type (LES 11)
FWHM / FWTM 50.0° / 81.0°
Efficiency 85 %
Peak intensity 1 cd/lm
LEDs/each optic 1
Light colour/type White
Required components:
 IDEAL: 50-2100NC + 50-2100AN



Light distribution files



LED COB L-Type (LES 11)
FWHM / FWTM 57.0° / 87.0°
Efficiency 88 %
Peak intensity 1 cd/lm
LEDs/each optic 1
Light colour/type White
Required components:
 TE Connectivity: 2213382-2 + OPTIC CLIP Z50 TYPE1 2213194-1

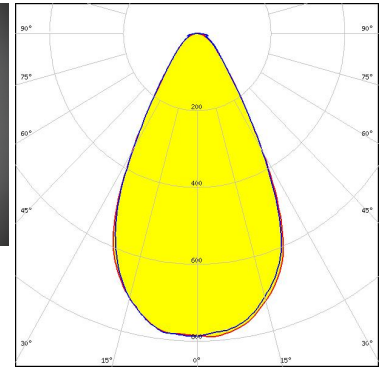


Light distribution files

OPTICAL RESULTS (MEASURED):

OSRAM
Opto Semiconductors

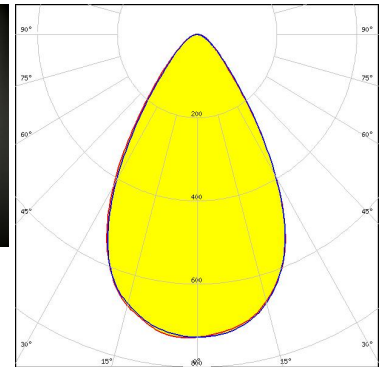
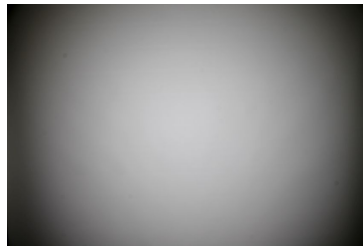
LED Soleriq S13 19x19
 FWHM / FWTM 58.0° / 97.0°
 Efficiency 85 %
 Peak intensity 0.8 cd/lm
 LEDs/each optic 1
 Light colour/type White
 Required components:
 IDEAL: 50-2103CT + 50-2100AN



Light distribution files

OSRAM
Opto Semiconductors

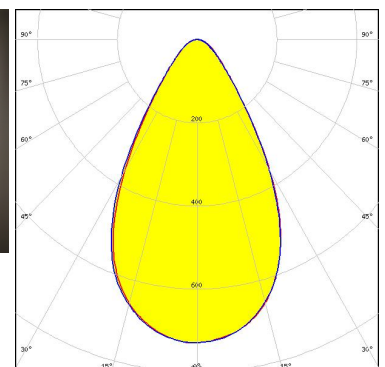
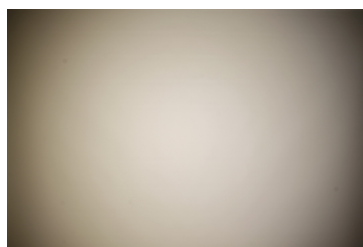
LED Soleriq S13 19x19
 FWHM / FWTM 63.0° / 99.0°
 Efficiency 84 %
 Peak intensity 0.7 cd/lm
 LEDs/each optic 1
 Light colour/type White
 Required components:
 TE Connectivity: 2213254-2 + OPTIC CLIP Z50 TYPE1 2213194-1



Light distribution files

PHILIPS

LED Fortimo SLM L13 + SLM holder
 FWHM / FWTM 61.0° / 101.0°
 Efficiency 82 %
 Peak intensity 0.7 cd/lm
 LEDs/each optic 1
 Light colour/type White
 Required components:
 TE Connectivity: OPTIC CLIP Z50 TYPE1 2213194-1

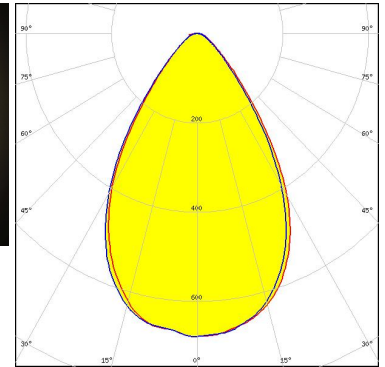
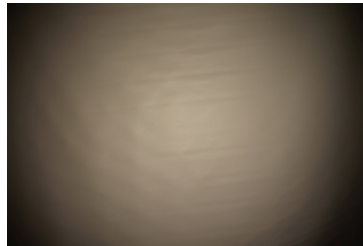


Light distribution files

OPTICAL RESULTS (MEASURED):

PHILIPS

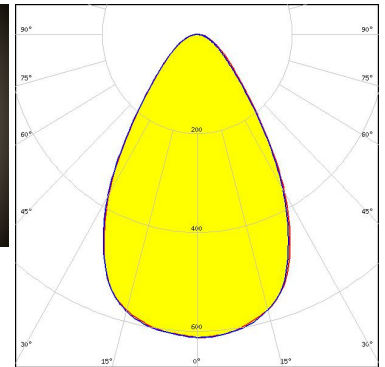
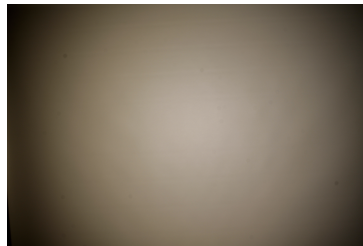
LED Fortimo SLM L13 CoB
FWHM / FWTM 66.0° / 103.0°
Efficiency 85 %
Peak intensity 0.7 cd/lm
LEDs/each optic 1
Light colour/type White
Required components:
TE Connectivity: 2213130-2 + OPTIC CLIP Z50 TYPE1 2213194-1



Light distribution files

PHILIPS

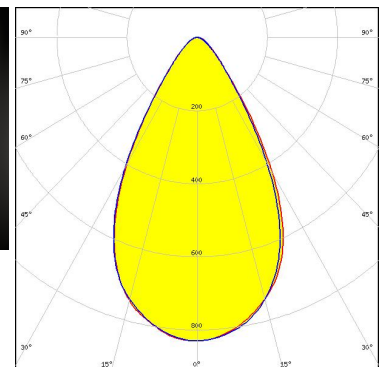
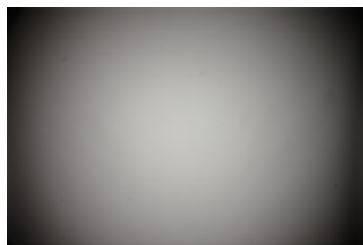
LED Fortimo SLM L15 + SLM holder
FWHM / FWTM 66.0° / 114.0°
Efficiency 83 %
Peak intensity 0.6 cd/lm
LEDs/each optic 1
Light colour/type White
Required components:
TE Connectivity: OPTIC CLIP Z50 TYPE1 2213194-1



Light distribution files

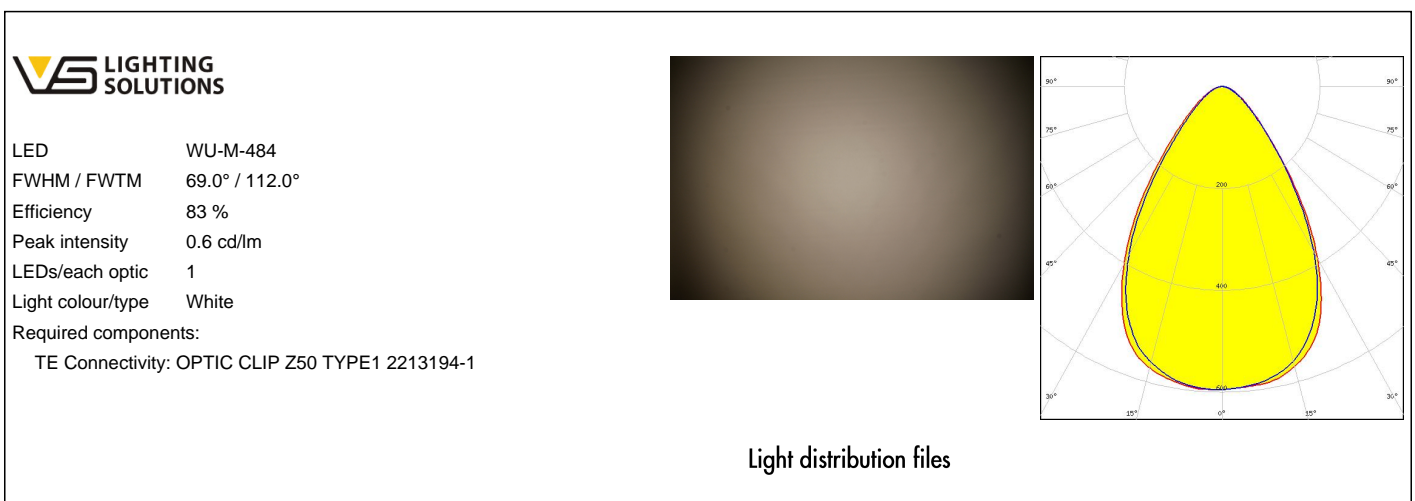
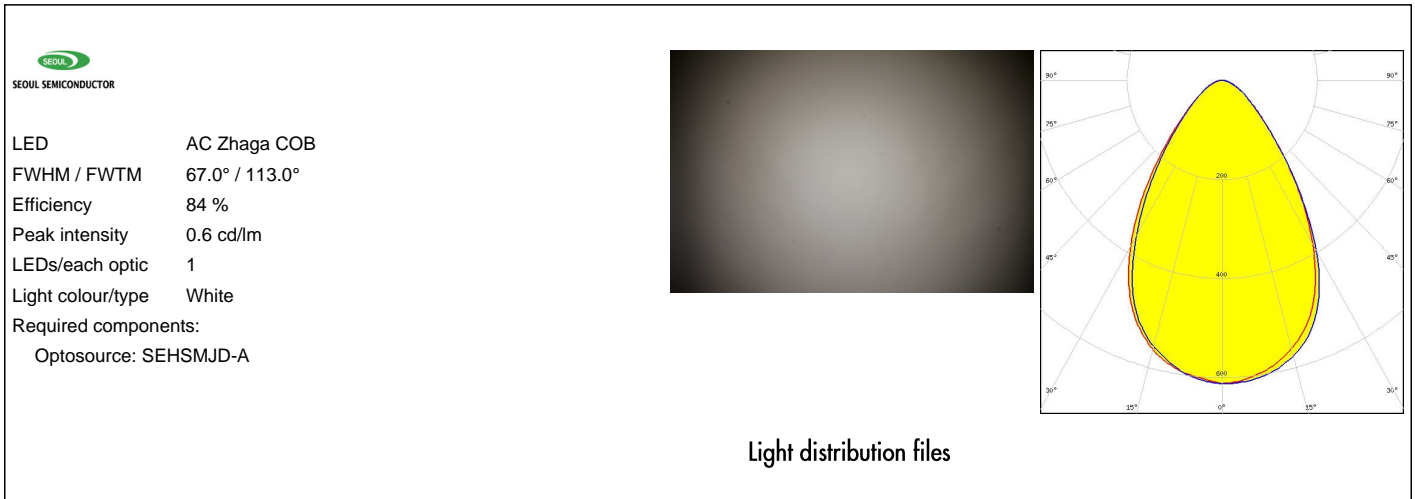
SAMSUNG

LED LC040C
FWHM / FWTM 60.0° / 93.0°
Efficiency 86 %
Peak intensity 0.8 cd/lm
LEDs/each optic 1
Light colour/type White
Required components:
TE Connectivity: 2213382-2 + OPTIC CLIP Z50 TYPE1 2213194-1



Light distribution files

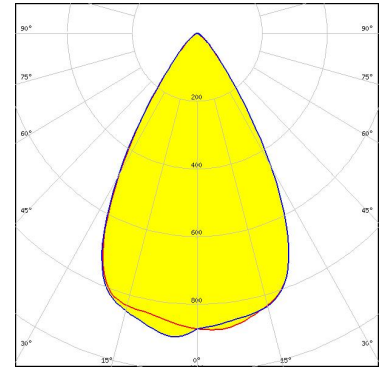
OPTICAL RESULTS (MEASURED):



OPTICAL RESULTS (SIMULATED):

bridgelux.

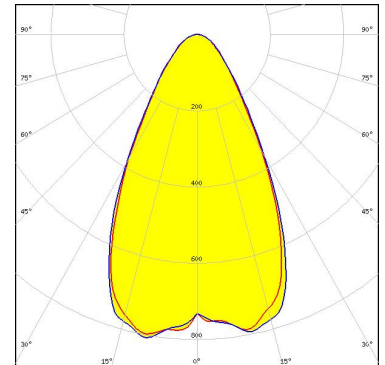
LED V10 Gen6
FWHM / FWTM 60.0°
Efficiency 88 %
LEDs/each optic 1
Light colour/type White
Required components:
C14123_CLAMP-CXA15-18



Light distribution files

bridgelux.

LED V13 Gen7
FWHM / FWTM 59.0° / 128.0°
Efficiency 89 %
Peak intensity 0.8 cd/lm
LEDs/each optic 1
Light colour/type White
Required components:

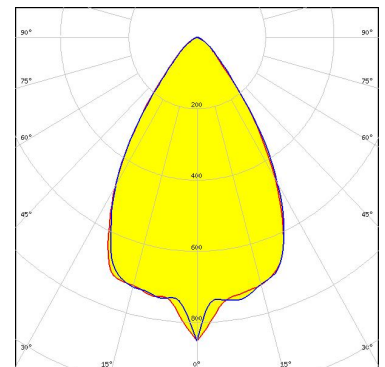


IDEAL: 50-2103CT + 50-2100AN

Light distribution files

bridgelux.

LED V13 Gen7
FWHM / FWTM 60.0° / 94.0°
Efficiency 88 %
Peak intensity 0.9 cd/lm
LEDs/each optic 1
Light colour/type White
Required components:
C13658_CLAMP-VERO13-18



Bender Wirth: 477 Typ L1

Light distribution files

OPTICAL RESULTS (SIMULATED):

CITIZEN

LED CLL02x/CLU02x (LES10)
FWHM / FWTM 60.0°
Efficiency 88 %
LEDs/each optic 1
Light colour/type White

Required components:

C13658_CLAMP-VERO13-18

Bender Wirth: 434 Typ L1

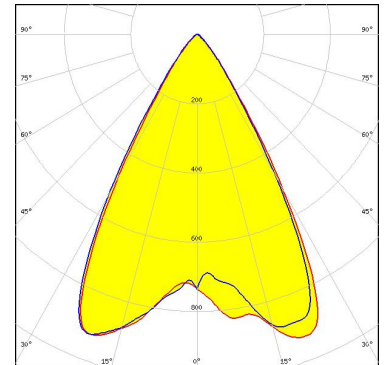
CITIZEN

LED CLU700/701/702/703
FWHM / FWTM 60.0°
Efficiency 89 %
LEDs/each optic 1
Light colour/type White

Required components:

C13658_CLAMP-VERO13-18

Bender Wirth: 434 Typ L1



Light distribution files

CITIZEN

LED CLU710/711
FWHM / FWTM 60.0°
Efficiency 88 %
LEDs/each optic 1
Light colour/type White

Required components:

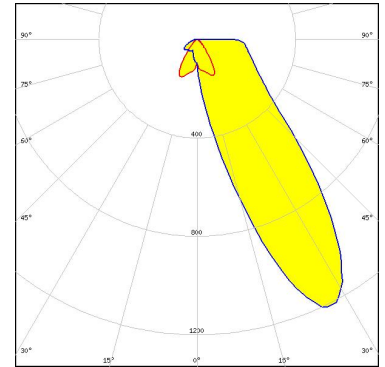
C13658_CLAMP-VERO13-18

Bender Wirth: 470 Typ L1

OPTICAL RESULTS (SIMULATED):



LED CXA/B 13xx
FWHM / FWTM 62.0°
Efficiency 89 %
LEDs/each optic 1
Light colour/type White
Required components:
C13658_CLAMP-VERO13-18

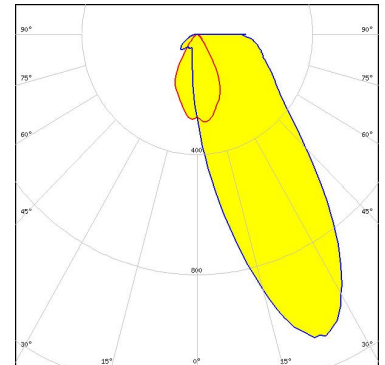


Bender Wirth: 448 Typ L1

Light distribution files



LED CXA/B 15xx
FWHM / FWTM 62.0°
Efficiency 89 %
LEDs/each optic 1
Light colour/type White
Required components:
C13658_CLAMP-VERO13-18

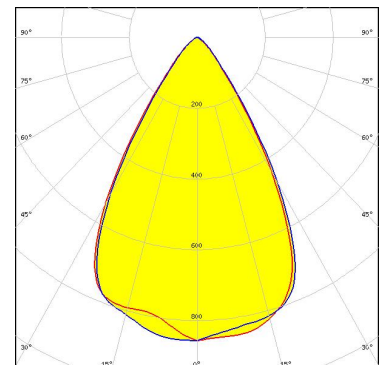


Bender Wirth: 441 Typ L1

Light distribution files



LED CXA/B 15xx
FWHM / FWTM 62.0°
Efficiency 89 %
LEDs/each optic 1
Light colour/type White
Required components:
C14123_CLAMP-CXA15-18

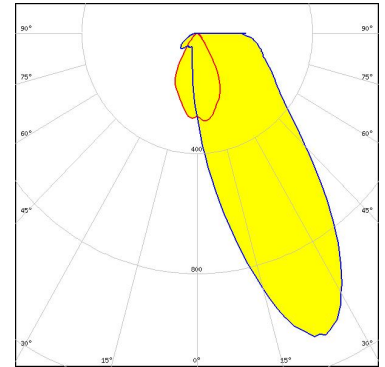


Light distribution files

OPTICAL RESULTS (SIMULATED):



LED CXA/B 1816 & CXA/B 1820 & CXA 1850
FWHM / FWTM 63.0°
Efficiency 89 %
LEDs/each optic 1
Light colour/type White
Required components:
C13658_CLAMP-VERO13-18



Bender Wirth: 437 Typ L1

Light distribution files

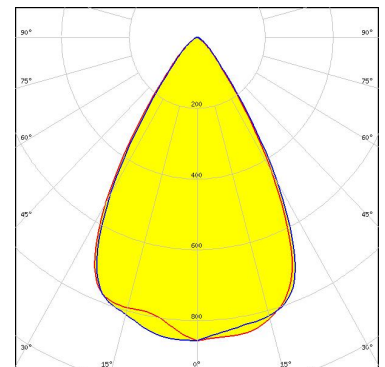


LED CXA/B 1816 & CXA/B 1820 & CXA 1850
FWHM / FWTM 57.0°
Efficiency 85 %
LEDs/each optic 1
Light colour/type White
Required components:

TE Connectivity: 2213401-2 + OPTIC CLIP Z50 TYPE1 2213194-1



LED CXA/B 1816 & CXA/B 1820 & CXA 1850
FWHM / FWTM 63.0°
Efficiency 89 %
LEDs/each optic 1
Light colour/type White
Required components:
C14123_CLAMP-CXA15-18

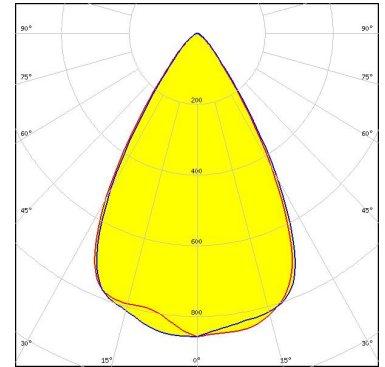


Light distribution files

OPTICAL RESULTS (SIMULATED):



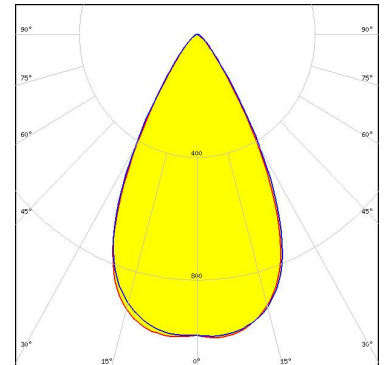
LED CXA/B 1830
FWHM / FWTM 62.0°
Efficiency 87 %
LEDs/each optic 1
Light colour/type White
Required components:
C14123_CLAMP-CXA15-18



Light distribution files



LED LUXEON CoB 1202/1203
FWHM / FWTM 56.0° / 82.0 + 80.0°
Efficiency 87 %
Peak intensity 1 cd/lm
LEDs/each optic 1
Light colour/type White
Required components:

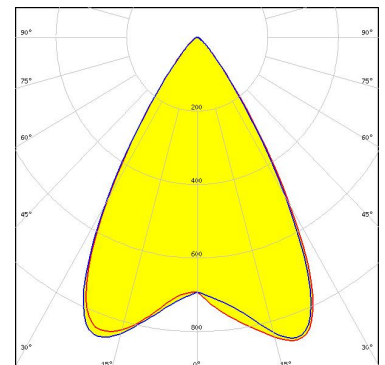


TE Connectivity: 2213382-2 + OPTIC CLIP Z50 TYPE1 2213194-1

Light distribution files



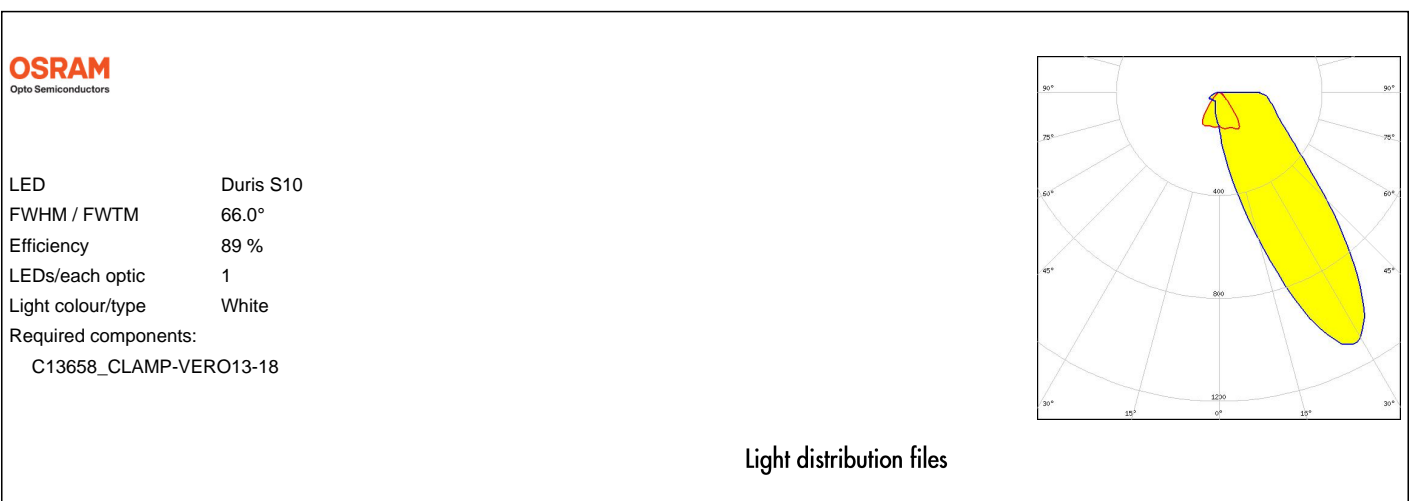
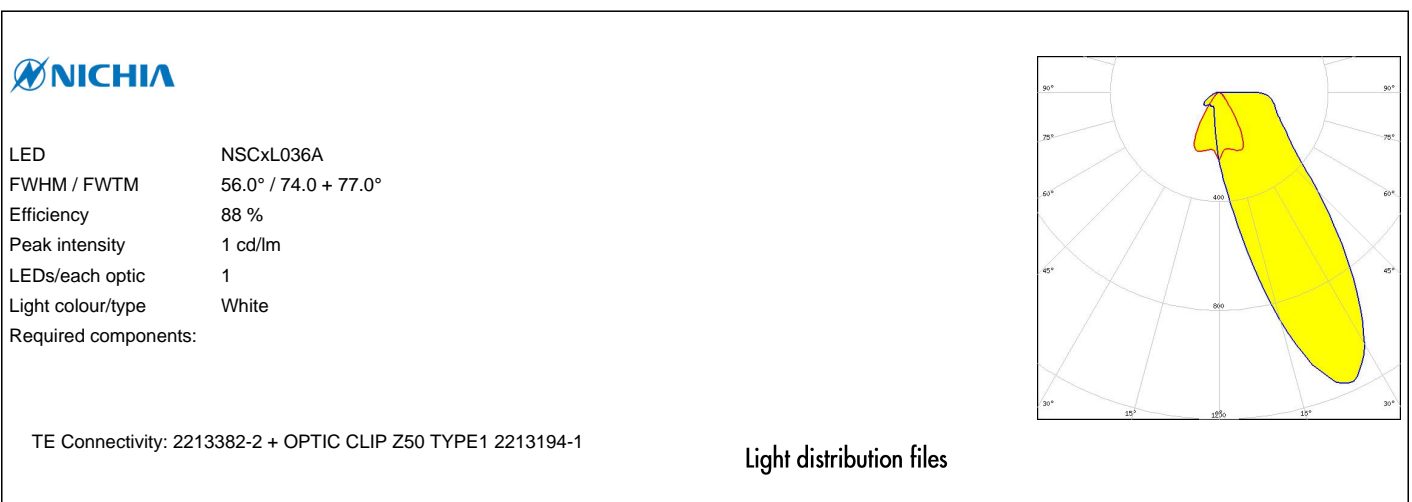
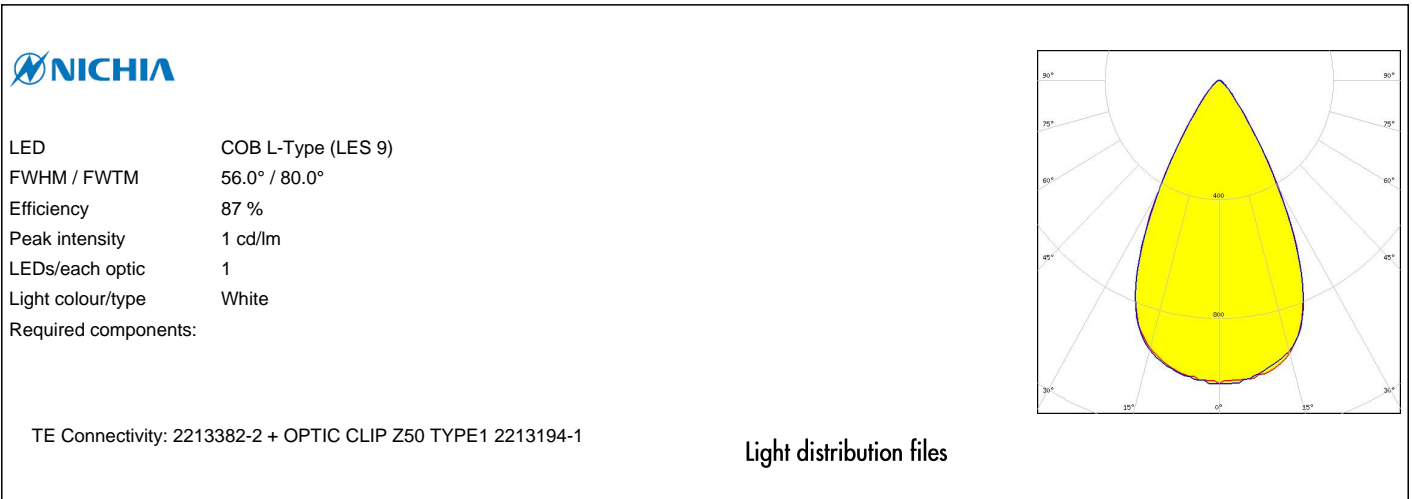
LED LUXEON CoB 1202s
FWHM / FWTM 60.0°
Efficiency 89 %
LEDs/each optic 1
Light colour/type White
Required components:
C13658_CLAMP-VERO13-18



Bender Wirth: 452 Typ L1

Light distribution files

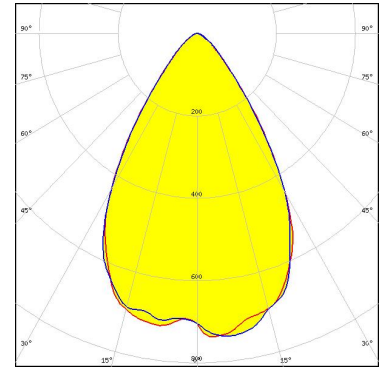
OPTICAL RESULTS (SIMULATED):



OPTICAL RESULTS (SIMULATED):

OSRAM
Opto Semiconductors

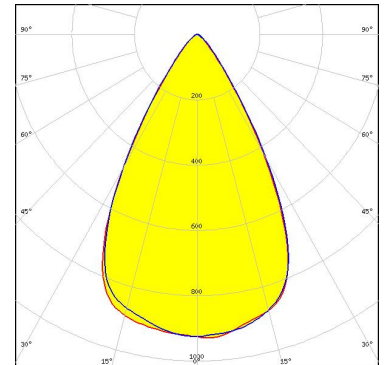
LED Soleriq S13
FWHM / FWTM 63.0°
Efficiency 84 %
LEDs/each optic 1
Light colour/type White
Required components:
C14123_CLAMP-CXA15-18



Light distribution files

SHARP

LED Mini Zenigata (GW6BM)
FWHM / FWTM 62.0°
Efficiency 88 %
LEDs/each optic 1
Light colour/type White
Required components:
C13658_CLAMP-VERO13-18



Light distribution files

Bender Wirth: 452 Typ L1

GENERAL INFORMATION:

NOTE: The typical beam angle will be changed by different color, chip size and chip position tolerance. The typical total beam angle is the full angle measured where the luminous intensity is half of the peak value.

Due to use of high power COB's with this product, special attention to proper thermal design is highly recommended. LEDiL has no liability for direct, indirect or consecutive damages arising from the LEDiL products being used outside of the recommended temperature range.

MATERIALS:

As part of our continuous research and improvement processes, and to ensure the best possible quality and availability of our products, LEDiL reserves the right to change material grades without notice.

PRODUCT DATA USER AGREEMENT AND DISCLAIMER:

The measured data in the provided downloadable LEDiL Product Datasheets and Mechanical 2D-Drawings is rounded and provided as reference for planning. LEDiL Oy's optical specifications have been verified by conducting performance testing of the products in accordance with the company's quality system. The reported data are averaged results of multiple measurements with typical variation. LEDiL Oy reserves the right to without prior notification make changes and improvements to its products.

LEDiL Oy assumes neither warranty, nor guarantee nor any other liability of any kind for the contents and correctness of the provided data. The provided data has been generated with highest diligence but the provided data may in reality not represent the complete possible variation range of all intrinsic parameters. Therefore, in certain cases a deviation from the provided data could occur.

LEDiL Oy reserves the right to undertake technical changes of its products without further notification which could lead to changes in the provided data. LEDiL Oy assumes no liability of any kind for the possible deviation from any provided data or any other damage resulting from the usage of the provided data.

The user agrees to this disclaimer and user agreement with the download or usage of the provided files.

LEDiL Oy

Joensuunkatu 7
FI-24240 SALO
Finland

LEDiL Inc.

228 West Page Street
Suite D
Sycamore IL 60178
USA

Ledil Optics Technology (Shenzhen) Co., Ltd.

405 , Block B
Casic Motor Building
Shenzhen 518057
P.R.CHINA

Local sales and technical support

[www.ledil.com/
where_to_buy](http://www.ledil.com/where_to_buy)

Shipping locations

Poznan, Poland
Hong Kong, China

Distribution Partners

[www.ledil.com/
where_to_buy](http://www.ledil.com/where_to_buy)