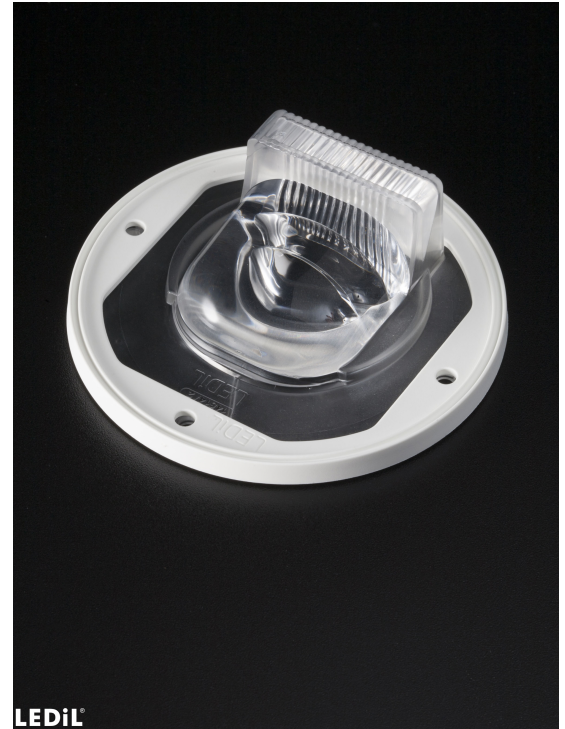


## STELLA-T4

IESNA Type IV for wider roads and area lighting like car parks and gardens. Compatible with up to 23 mm LES size COBs. Variant with white frame.

### SPECIFICATION:

Dimensions	Ø 90.0 mm
Height	26.9 mm
Fastening	screw
Ingress protection classes	IP67
ROHS compliant	yes ⓘ

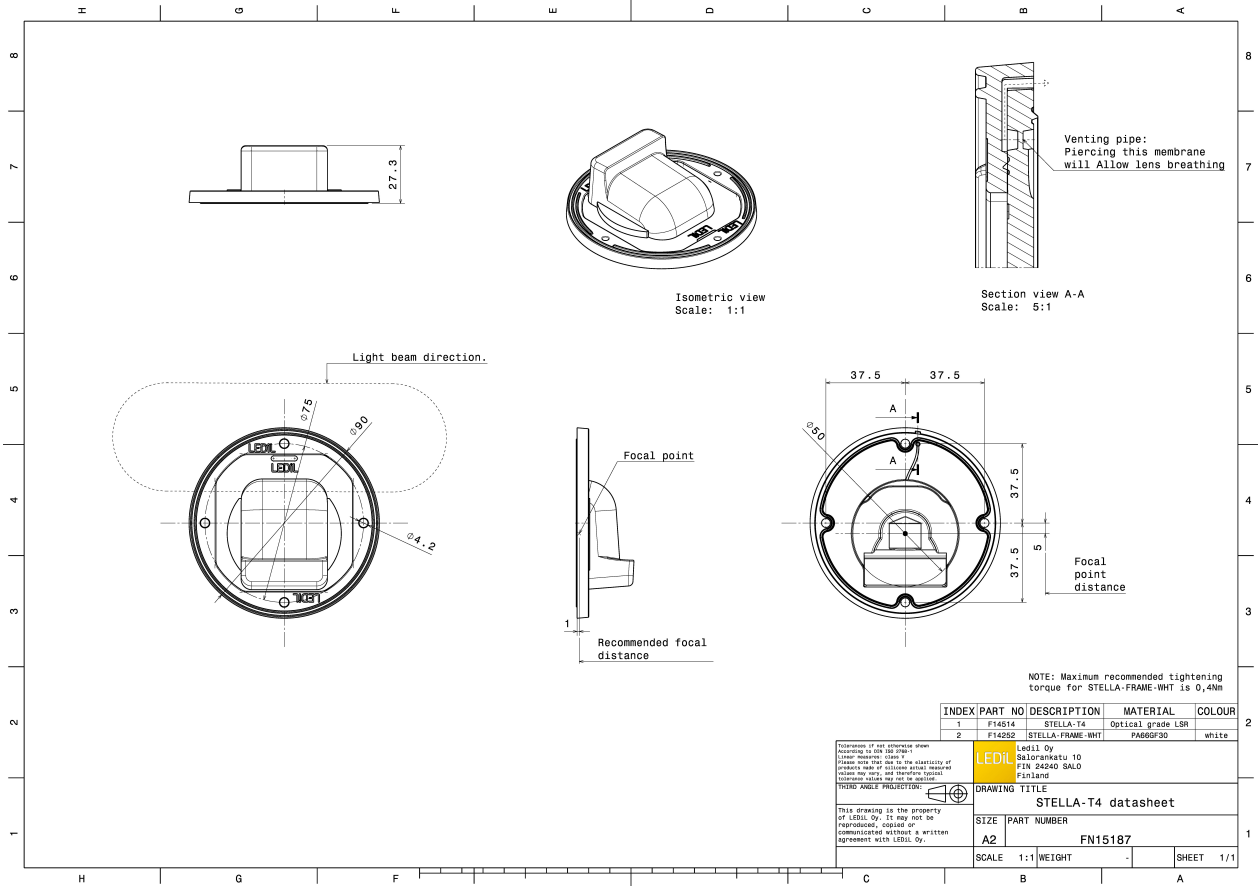


### MATERIALS:

Component	Type	Material	Colour	Finish	Length
STELLA-T4	Single lens	Silicone	clear		85.0
STELLA-FRAME-WHT	Holder	PA66	white		90.0

### ORDERING INFORMATION:

Component		Qty in box	MOQ	MPQ	Box weight (kg)
FN15187_STELLA-T4	Single lens	135	135	15	7.1
» Box size: 480 x 280 x 300 mm					

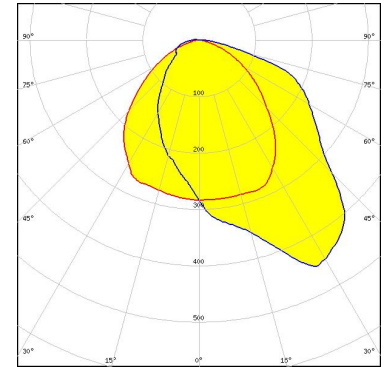


See also our general installation guide: [www.ledil.com/installation\\_guide](http://www.ledil.com/installation_guide)

### OPTICAL RESULTS (MEASURED):



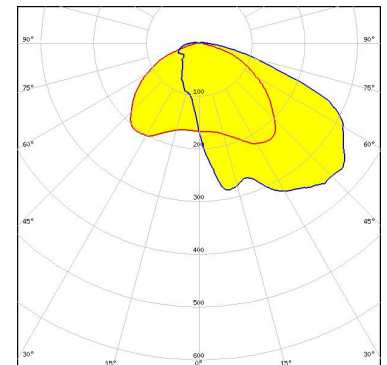
LED V22 Gen7  
FWHM / FWTM Asymmetric  
Efficiency 90 %  
Peak intensity 0.5 cd/lm  
LEDs/each optic 1  
Light colour/type White  
Required components:



Light distribution files



LED CXA/B 1816 & CXA/B 1820 & CXA 1850  
FWHM / FWTM Asymmetric  
Efficiency 92 %  
Peak intensity 0.5 cd/lm  
LEDs/each optic 1  
Light colour/type White  
Required components:



Light distribution files



LED LUXEON CoB 1208  
FWHM / FWTM Asymmetric  
Efficiency 93 %  
Peak intensity 0.5 cd/lm  
LEDs/each optic 1  
Light colour/type White  
Required components:

Light distribution files

### OPTICAL RESULTS (MEASURED):



LED LUXEON CoB 1211  
FWHM / FWTM Asymmetric  
Efficiency 92 %  
Peak intensity 0.5 cd/m  
LEDs/each optic 1  
Light colour/type White  
Required components:

[Light distribution files](#)



LED CxM-14 (19x19)  
FWHM / FWTM Asymmetric  
Efficiency 94 %  
Peak intensity 0.5 cd/m  
LEDs/each optic 1  
Light colour/type White  
Required components:

[Light distribution files](#)



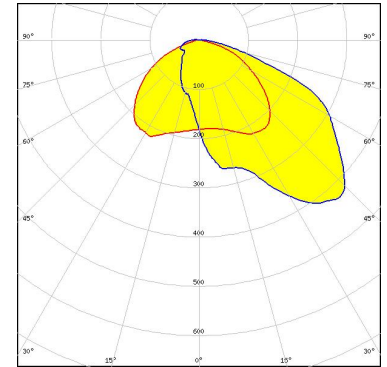
LED CxM-18 (21.5x21.5)  
FWHM / FWTM Asymmetric  
Efficiency 94 %  
Peak intensity 0.5 cd/m  
LEDs/each optic 1  
Light colour/type White  
Required components:

[Light distribution files](#)

### OPTICAL RESULTS (MEASURED):



LED COB J-Type  
FWHM / FWTM Asymmetric  
Efficiency 93 %  
Peak intensity 0.5 cd/m  
LEDs/each optic 1  
Light colour/type White  
Required components:



Light distribution files



Osram Opto Semiconductors

LED Soleriq S13  
FWHM / FWTM Asymmetric  
Efficiency 93 %  
Peak intensity 0.5 cd/m  
LEDs/each optic 1  
Light colour/type White  
Required components:

Light distribution files



Osram Opto Semiconductors

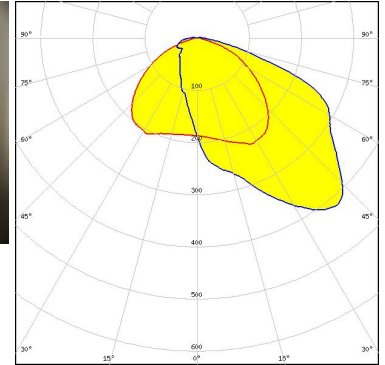
LED Soleriq S19  
FWHM / FWTM Asymmetric  
Efficiency 93 %  
Peak intensity 0.5 cd/m  
LEDs/each optic 1  
Light colour/type White  
Required components:

Light distribution files

### OPTICAL RESULTS (MEASURED):

#### SAMSUNG

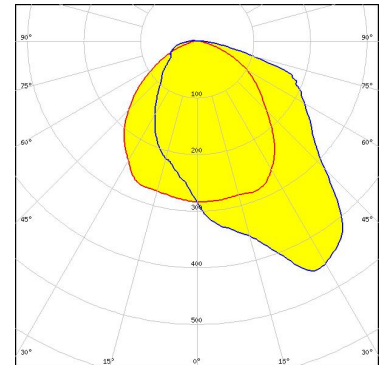
LED LC016D / LC019D / LC026D / LC033D  
 FWHM / FWTM Asymmetric  
 Efficiency 92 %  
 Peak intensity 0.5 cd/lm  
 LEDs/each optic 1  
 Light colour/type White  
 Required components:



Light distribution files

#### SAMSUNG

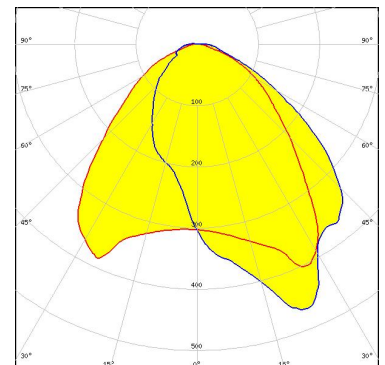
LED LC040D / LC060D / LC080D  
 FWHM / FWTM Asymmetric  
 Efficiency 91 %  
 Peak intensity 0.5 cd/lm  
 LEDs/each optic 1  
 Light colour/type White  
 Required components:



Light distribution files

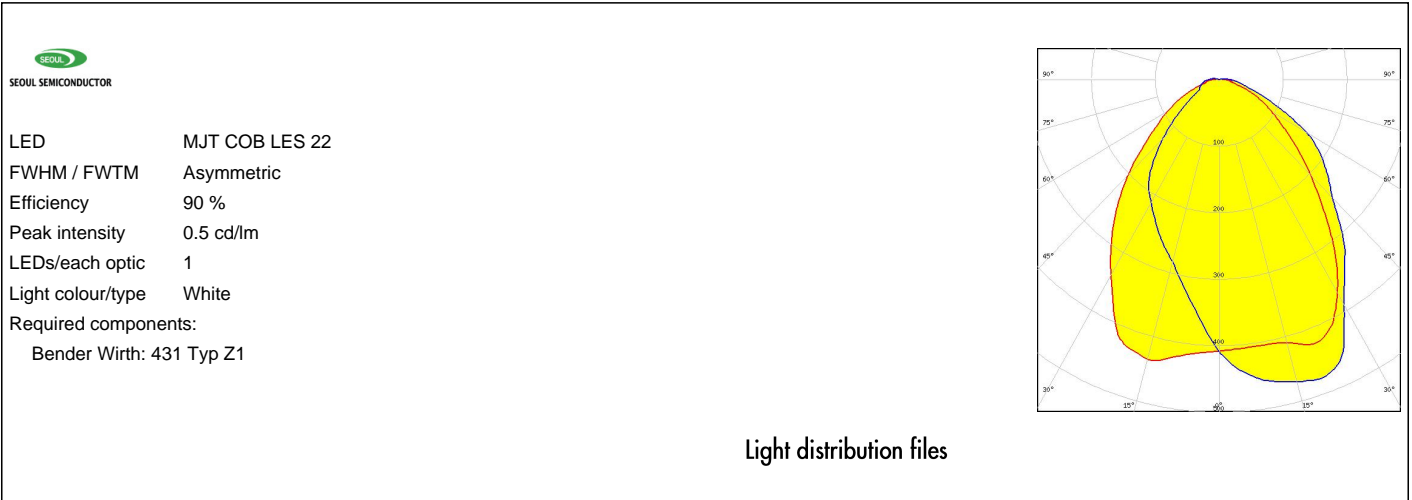


LED MJT COB LES 14.5  
 FWHM / FWTM Asymmetric  
 Efficiency 91 %  
 Peak intensity 0.6 cd/lm  
 LEDs/each optic 1  
 Light colour/type White  
 Required components:  
 Bender Wirth: 433 Typ Z1



Light distribution files

### OPTICAL RESULTS (MEASURED):

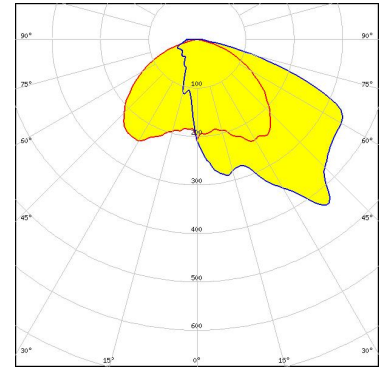


### OPTICAL RESULTS (SIMULATED):



LED V10 Gen7  
FWHM / FWTM Asymmetric  
Efficiency 94 %  
Peak intensity 0.5 cd/lm  
LEDs/each optic 1  
Light colour/type White  
Required components:

Bender Wirth: 486 Typ L1

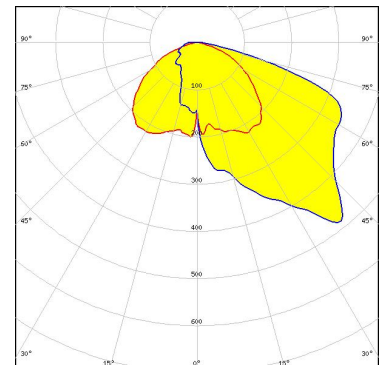


Light distribution files



LED V13 Gen7  
FWHM / FWTM Asymmetric  
Efficiency 96 %  
Peak intensity 0.5 cd/lm  
LEDs/each optic 1  
Light colour/type White  
Required components:

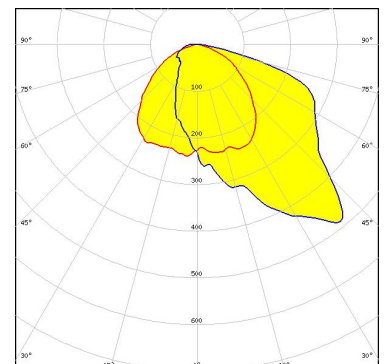
Bender Wirth: 477 Typ Z1



Light distribution files



LED V18 Gen7  
FWHM / FWTM Asymmetric  
Efficiency 94 %  
Peak intensity 0.5 cd/lm  
LEDs/each optic 1  
Light colour/type White  
Required components:



Light distribution files

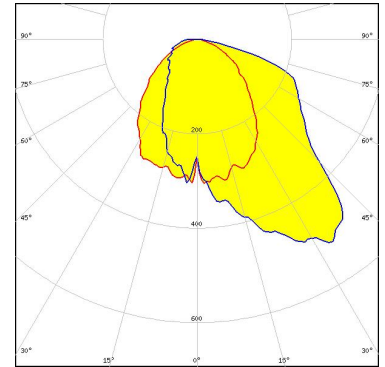


### OPTICAL RESULTS (SIMULATED):



LED V22 Gen7  
FWHM / FWTM Asymmetric  
Efficiency 94 %  
Peak intensity 0.5 cd/lm  
LEDs/each optic 1  
Light colour/type White  
Required components:

Bender Wirth: 431 Typ Z1



Light distribution files



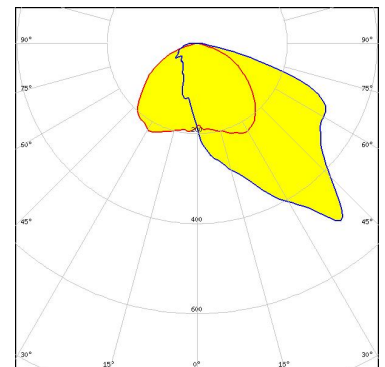
LED VERO18  
FWHM / FWTM Asymmetric  
Efficiency 91 %  
LEDs/each optic 1  
Light colour/type White  
Required components:

Light distribution files

## CITIZEN

LED CLL03x/CLU03x  
FWHM / FWTM Asymmetric  
Efficiency 94 %  
Peak intensity 0.5 cd/lm  
LEDs/each optic 1  
Light colour/type White  
Required components:

Bender Wirth: 433 Typ Z1



Light distribution files

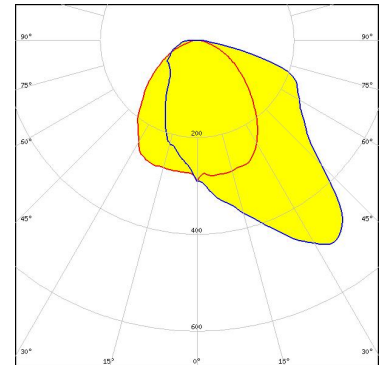
### OPTICAL RESULTS (SIMULATED):

#### CITIZEN

LED CLL03x/CLU03x  
FWHM / FWTM Asymmetric  
Efficiency 93 %  
LEDs/each optic 1  
Light colour/type White  
Required components:

#### CITIZEN

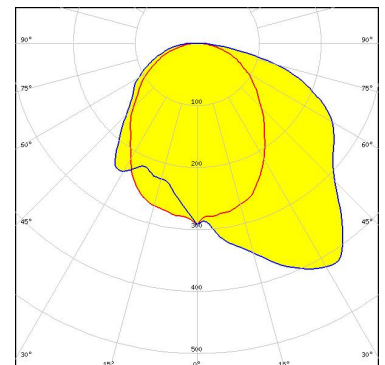
LED CLL04x/CLU04x  
FWHM / FWTM Asymmetric  
Efficiency 93 %  
Peak intensity 0.5 cd/lm  
LEDs/each optic 1  
Light colour/type White  
Required components:



Light distribution files

#### CITIZEN

LED CLL05x/CLU05x  
FWHM / FWTM Asymmetric  
Efficiency 90 %  
Peak intensity 0.4 cd/lm  
LEDs/each optic 1  
Light colour/type White  
Required components:



Light distribution files

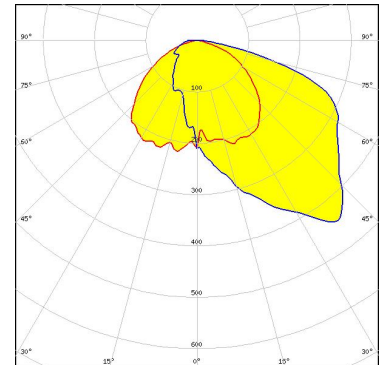
### OPTICAL RESULTS (SIMULATED):



LED CXA/B 1830  
FWHM / FWTM Asymmetric  
Efficiency 93 %  
LEDs/each optic 1  
Light colour/type White  
Required components:



LED CXA/B 25xx  
FWHM / FWTM Asymmetric  
Efficiency 92 %  
Peak intensity 0.5 cd/lm  
LEDs/each optic 1  
Light colour/type White  
Required components:



Light distribution files



LED CXA/B 30xx  
FWHM / FWTM Asymmetric  
Efficiency %  
LEDs/each optic 1  
Light colour/type White  
Required components:

### GENERAL INFORMATION:

NOTE: The typical beam angle will be changed by different color, chip size and chip position tolerance. The typical total beam angle is the full angle measured where the luminous intensity is half of the peak value.

Due to use of high power COB's with this product, special attention to proper thermal design is highly recommended. LEDiL has no liability for direct, indirect or consecutive damages arising from the LEDiL products being used outside of the recommended temperature range.

### MATERIALS:

As part of our continuous research and improvement processes, and to ensure the best possible quality and availability of our products, LEDiL reserves the right to change material grades without notice.

### PRODUCT DATA USER AGREEMENT AND DISCLAIMER:

The measured data in the provided downloadable LEDiL Product Datasheets and Mechanical 2D-Drawings is rounded and provided as reference for planning. LEDiL Oy's optical specifications have been verified by conducting performance testing of the products in accordance with the company's quality system. The reported data are averaged results of multiple measurements with typical variation. LEDiL Oy reserves the right to without prior notification make changes and improvements to its products.

LEDiL Oy assumes neither warranty, nor guarantee nor any other liability of any kind for the contents and correctness of the provided data. The provided data has been generated with highest diligence but the provided data may in reality not represent the complete possible variation range of all intrinsic parameters. Therefore, in certain cases a deviation from the provided data could occur.

LEDiL Oy reserves the right to undertake technical changes of its products without further notification which could lead to changes in the provided data. LEDiL Oy assumes no liability of any kind for the possible deviation from any provided data or any other damage resulting from the usage of the provided data.

The user agrees to this disclaimer and user agreement with the download or usage of the provided files.

#### LEDiL Oy

Joensuunkatu 13  
FI-24240 SALO  
Finland

#### LEDiL Inc.

228 West Page Street  
Suite D  
Sycamore IL 60178  
USA

#### Ledil Optics Technology (Shenzhen) Co., Ltd.

# 405 , Block B  
Casic Motor Building  
Shenzhen 518057  
P.R.CHINA

#### Local sales and technical support

[www.ledil.com/  
where\\_to\\_buy](http://www.ledil.com/where_to_buy)

#### Shipping locations

Poznan, Poland  
Hong Kong, China

#### Distribution Partners

[www.ledil.com/  
where\\_to\\_buy](http://www.ledil.com/where_to_buy)