

## STRADA-S

Side emitter beam. Assembly with installation tape.

### SPECIFICATION:

Dimensions	19.6 x 15.5 mm
Height	6.9 mm
Fastening	tape, pin, screw
ROHS compliant	yes ⓘ

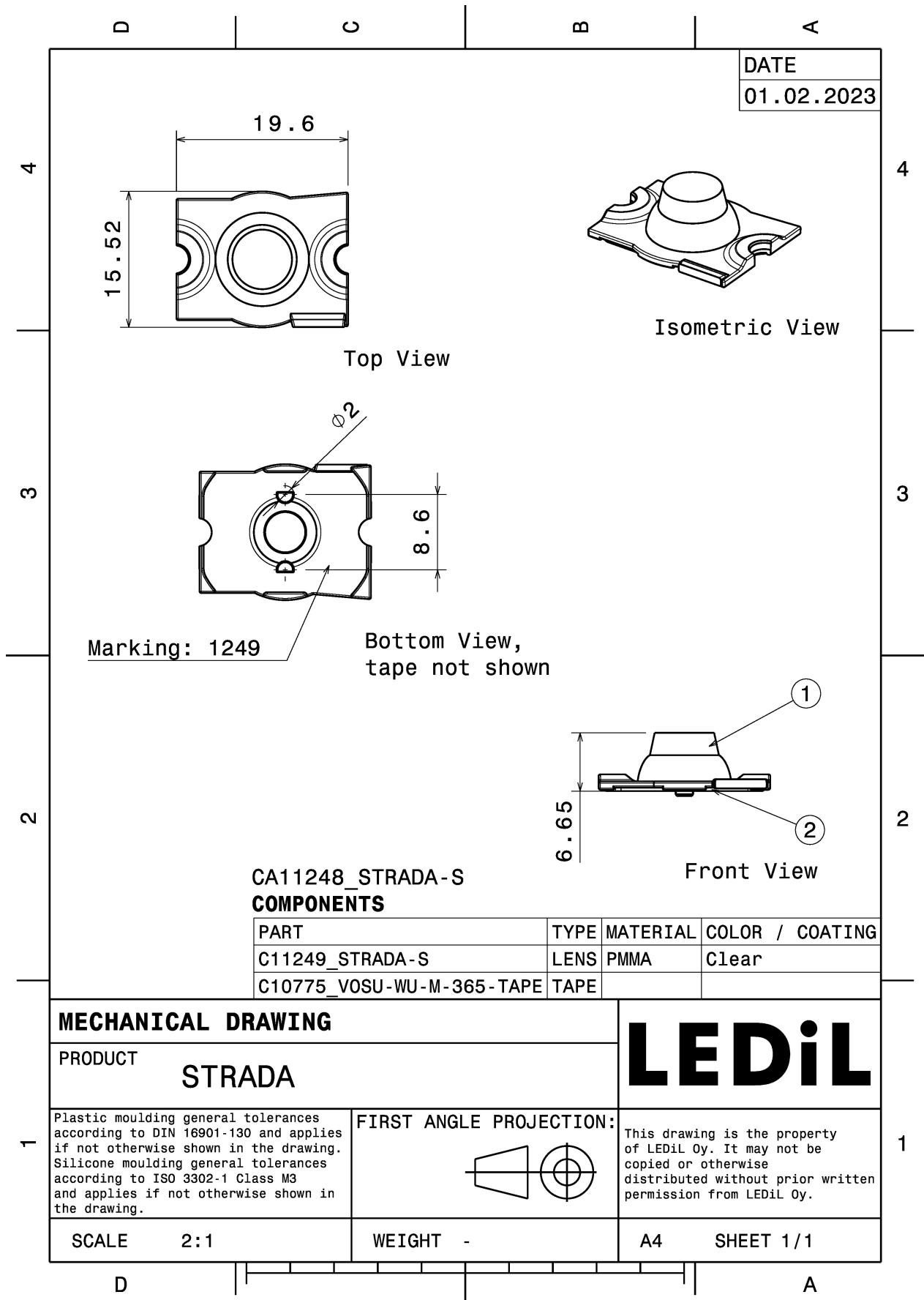


### MATERIALS:

Component	Type	Material	Colour	Finish	Length
STRADA-S	Single lens	PMMA	clear		19.6
VOSU-WU-M-365-TAPE	Tape	Acrylic foam			18.0

### ORDERING INFORMATION:

Component		Qty in box	MOQ	MPQ	Box weight (kg)
CA11248_STRADA-S	Single lens	4080	240	240	3.7
» Box size:					



See also our general installation guide: [www.ledil.com/installation\\_guide](http://www.ledil.com/installation_guide)

## OPTICAL RESULTS (MEASURED):

### LUMILEDS

LED LUXEON A  
FWHM / FWTM 134.0 + 170.0°  
Efficiency 93 %  
LEDs/each optic 1  
Light colour/type White  
Required components:

[Light distribution files](#)

### LUMILEDS

LED LUXEON Rebel  
FWHM / FWTM 162.0 + 138.0°  
Efficiency 93 %  
Peak intensity 0.4 cd/lm  
LEDs/each optic 1  
Light colour/type White  
Required components:

[Light distribution files](#)

### LUMILEDS

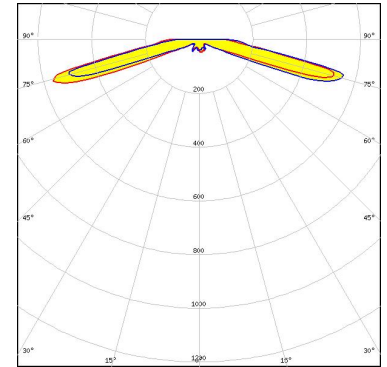
LED LUXEON Rebel ES  
FWHM / FWTM 134.0 + 170.0° / 98.0°  
Efficiency 93 %  
Peak intensity 0.3 cd/lm  
LEDs/each optic 1  
Light colour/type White  
Required components:

[Light distribution files](#)

### OPTICAL RESULTS (MEASURED):



LED LUXEON Z ES  
FWHM / FWTM 160.0°  
Efficiency 92 %  
Peak intensity 0.6 cd/lm  
LEDs/each optic 1  
Light colour/type White  
Required components:



[Light distribution files](#)



LED NCSxx19A  
FWHM / FWTM 162.0 + 138.0°  
Efficiency 93 %  
Peak intensity 0.4 cd/lm  
LEDs/each optic 1  
Light colour/type White  
Required components:

[Light distribution files](#)



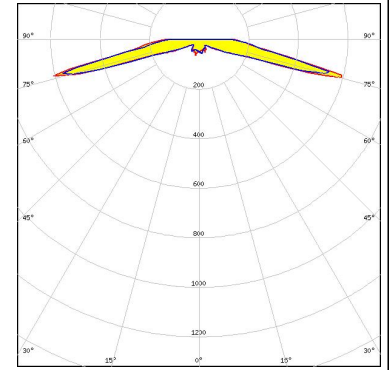
LED OSLOM SSL 150  
FWHM / FWTM 148.0 + 170.0°  
Efficiency 93 %  
Peak intensity 0.4 cd/lm  
LEDs/each optic 1  
Light colour/type White  
Required components:

[Light distribution files](#)

### OPTICAL RESULTS (MEASURED):

**OSRAM**  
Opto Semiconductors

LED	OSLON SSL 80
FWHM / FWTM	161.0° / 180.0°
Efficiency	93 %
Peak intensity	0.6 cd/lm
LEDs/each optic	1
Light colour/type	White
Required components:	

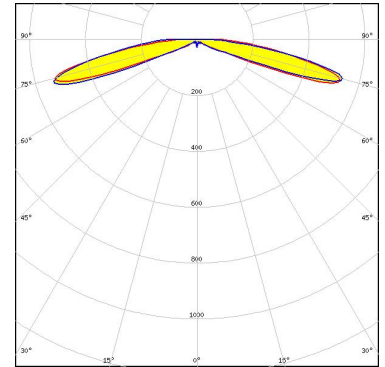


Light distribution files

### OPTICAL RESULTS (SIMULATED):



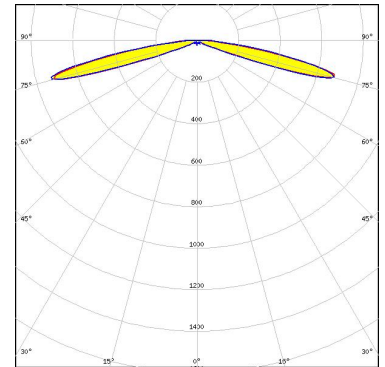
**LED** XQ-E HD  
**FWHM / FWTM** 165.0° / 180.0°  
**Efficiency** 94 %  
**Peak intensity** 0.5 cd/lm  
**LEDs/each optic** 1  
**Light colour/type** White  
**Required components:**



Light distribution files



**LED** XQ-E HI  
**FWHM / FWTM** 162.0° / 175.0°  
**Efficiency** 95 %  
**Peak intensity** 0.7 cd/lm  
**LEDs/each optic** 1  
**Light colour/type** White  
**Required components:**



Light distribution files



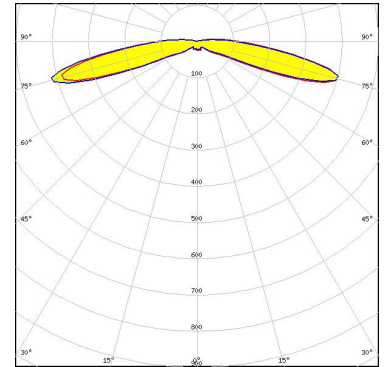
**LED** NVSxx19A  
**FWHM / FWTM** 144.0 + 176.0°  
**Efficiency** %  
**LEDs/each optic** 1  
**Light colour/type** White  
**Required components:**

Light distribution files

### OPTICAL RESULTS (SIMULATED):

**OSRAM**  
Opto Semiconductors

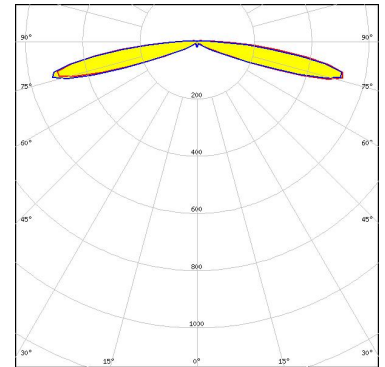
LED OSLOM Square CSSRM2/CSSRM3  
FWHM / FWTM 168.0° / 192.0°  
Efficiency 94 %  
Peak intensity 0.4 cd/lm  
LEDs/each optic 1  
Light colour/type White  
Required components:



Light distribution files

**OSRAM**  
Opto Semiconductors

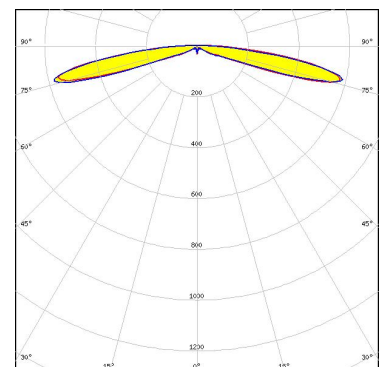
LED OSLOM SSL 150  
FWHM / FWTM 168.0° / 181.0°  
Efficiency 96 %  
Peak intensity 0.5 cd/lm  
LEDs/each optic 1  
Light colour/type White  
Required components:



Light distribution files

**OSRAM**  
Opto Semiconductors

LED OSLOM SSL 150  
FWHM / FWTM 167.0° / 180.0°  
Efficiency 96 %  
Peak intensity 0.6 cd/lm  
LEDs/each optic 1  
Light colour/type White  
Required components:

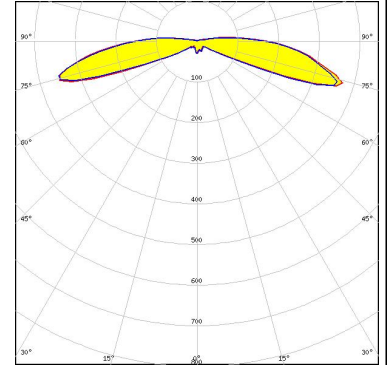


Light distribution files

### OPTICAL RESULTS (SIMULATED):

**OSRAM**  
Opto Semiconductors

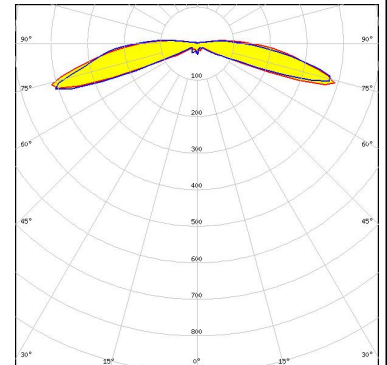
LED OSLON SSL 80  
 FWHM / FWTM 176.0° / 199.0°  
 Efficiency 95 %  
 Peak intensity 0.4 cd/lm  
 LEDs/each optic 1  
 Light colour/type True Green  
 Required components:



Light distribution files

**OSRAM**  
Opto Semiconductors

LED OSLON SSL 80  
 FWHM / FWTM 173.0° / 196.0°  
 Efficiency 96 %  
 Peak intensity 0.4 cd/lm  
 LEDs/each optic 1  
 Light colour/type Red  
 Required components:



Light distribution files

**SEUL**  
SEOUL SEMICONDUCTOR

LED Z5  
 FWHM / FWTM 144.0 + 176.0°  
 Efficiency %  
 LEDs/each optic 1  
 Light colour/type White  
 Required components:

Light distribution files



## OPTICAL RESULTS (SIMULATED):

**SHARP**

LED	Double Dome (GM2BB)
FWHM / FWTM	144.0 + 176.0°
Efficiency	%
LEDs/each optic	1
Light colour/type	White

Required components:

Light distribution files

### GENERAL INFORMATION:

NOTE: The typical beam angle will be changed by different color, chip size and chip position tolerance. The typical total beam angle is the full angle measured where the luminous intensity is half of the peak value.

### MATERIALS:

As part of our continuous research and improvement processes, and to ensure the best possible quality and availability of our products, LEDiL reserves the right to change material grades without notice.

### PRODUCT DATA USER AGREEMENT AND DISCLAIMER:

The measured data in the provided downloadable LEDiL Product Datasheets and Mechanical 2D-Drawings is rounded and provided as reference for planning. LEDiL Oy's optical specifications have been verified by conducting performance testing of the products in accordance with the company's quality system. The reported data are averaged results of multiple measurements with typical variation. LEDiL Oy reserves the right to without prior notification make changes and improvements to its products.

LEDiL Oy assumes neither warranty, nor guarantee nor any other liability of any kind for the contents and correctness of the provided data. The provided data has been generated with highest diligence but the provided data may in reality not represent the complete possible variation range of all intrinsic parameters. Therefore, in certain cases a deviation from the provided data could occur.

LEDiL Oy reserves the right to undertake technical changes of its products without further notification which could lead to changes in the provided data. LEDiL Oy assumes no liability of any kind for the possible deviation from any provided data or any other damage resulting from the usage of the provided data.

The user agrees to this disclaimer and user agreement with the download or usage of the provided files.

#### LEDiL Oy

Joensuunkatu 13  
FI-24240 SALO  
Finland

#### LEDiL Inc.

228 West Page Street  
Suite D  
Sycamore IL 60178  
USA

#### Ledil Optics Technology (Shenzhen) Co., Ltd.

# 405 , Block B  
Casic Motor Building  
Shenzhen 518057  
P.R.CHINA

#### Local sales and technical support

[www.ledil.com/  
where\\_to\\_buy](http://www.ledil.com/where_to_buy)

#### Shipping locations

Poznan, Poland  
Hong Kong, China

#### Distribution Partners

[www.ledil.com/  
where\\_to\\_buy](http://www.ledil.com/where_to_buy)