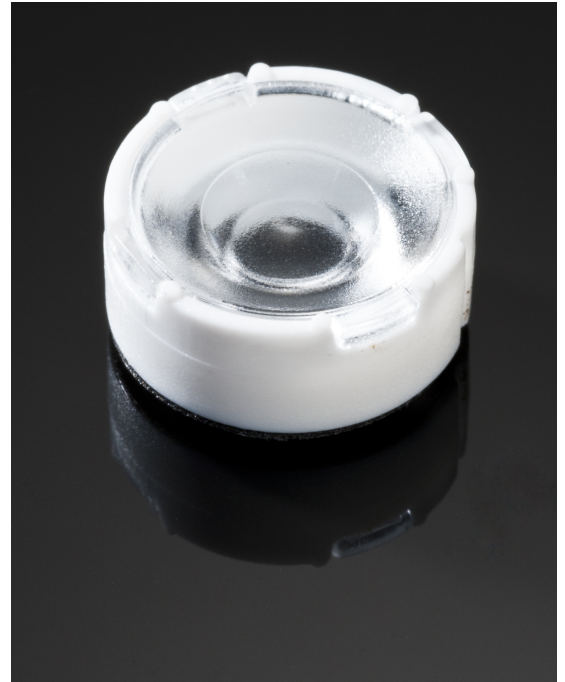


TINA3-WWW

~70° wide beam optimized for CREE XP-E.
Assembly with holder, installation tape and location pins.

SPECIFICATION:

Dimensions	Ø 16.1
Height	6.9 mm
Fastening	tape, pin
ROHS compliant	yes ⓘ

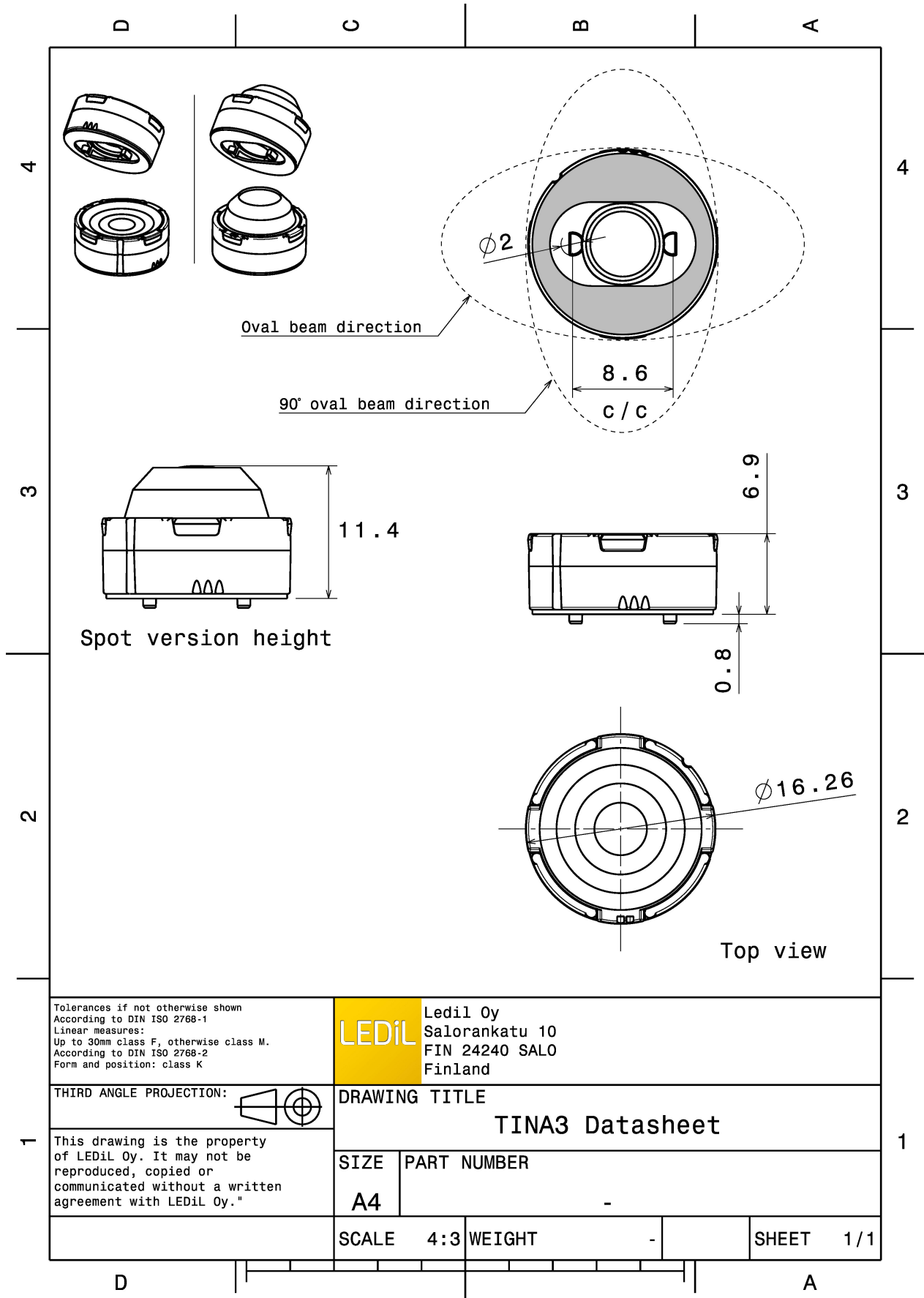


MATERIALS:

Component	Type	Material	Colour	Finish	Length (mm)
TINA3-WWW	Single lens	PMMA	clear		
TINA3-HLD-PIN-TAPE-XP	Holder	PC	white		
TINA-TAPE3	Tape	Acrylic foam tape	black		

ORDERING INFORMATION:

Component	Qty in box	MOQ	MPQ	Box weight (kg)
FA11826_TINA3-WWW	2016	288	288	3.9
» Box size:				

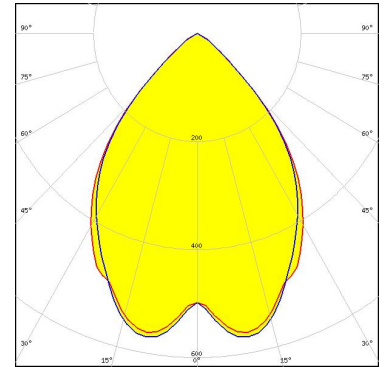


See also our general installation guide: www.ledil.com/installation_guide

OPTICAL RESULTS (MEASURED):



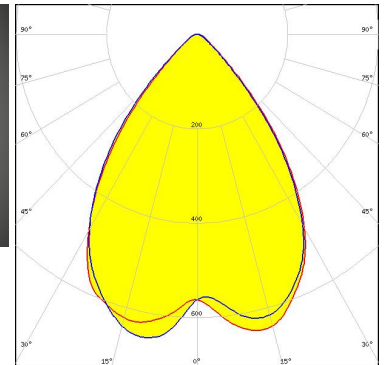
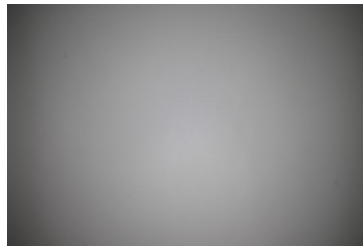
LED XP-G
FWHM / FWTM 77.0° / 106.0°
Efficiency 92 %
Peak intensity 0.5 cd/lm
LEDs/each optic 1
Light colour/type White
Required components:



Light distribution files



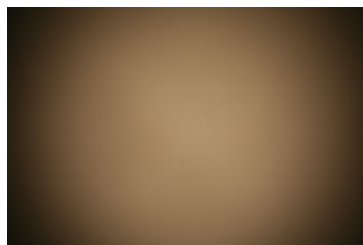
LED XP-L HI
FWHM / FWTM 77.0° / 103.0°
Efficiency 90 %
Peak intensity 0.7 cd/lm
LEDs/each optic 1
Light colour/type White
Required components:



Light distribution files



LED LUXEON A
FWHM / FWTM 80.0° / 108.0°
Efficiency 90 %
Peak intensity 0.5 cd/lm
LEDs/each optic 1
Light colour/type White
Required components:

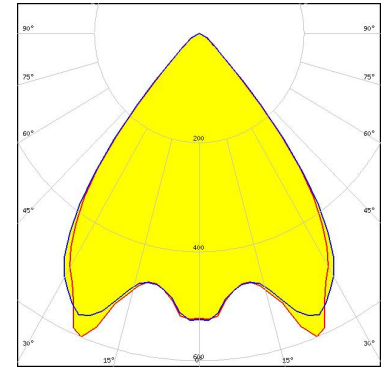


Light distribution files

OPTICAL RESULTS (MEASURED):



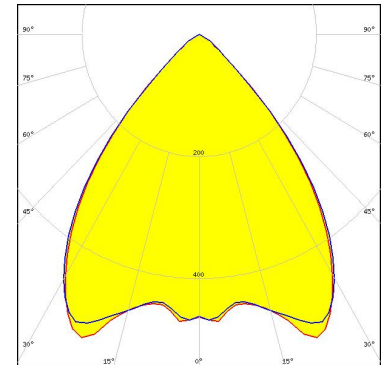
LED LUXEON Rebel
FWHM / FWMTM 77.0° / 98.0°
Efficiency 81 %
Peak intensity 0.5 cd/lm
LEDs/each optic 1
Light colour/type White
Required components:



Light distribution files



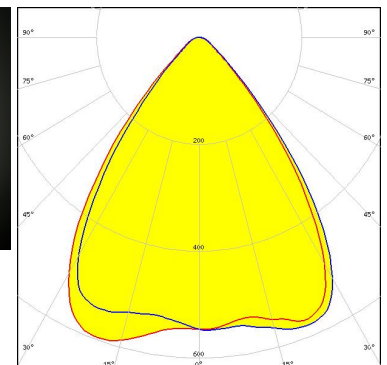
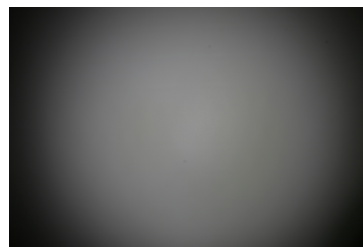
LED LUXEON Rebel ES
FWHM / FWMTM 80.0° / 104.0°
Efficiency 91 %
Peak intensity 0.5 cd/lm
LEDs/each optic 1
Light colour/type White
Required components:



Light distribution files



LED NF2x757A
FWHM / FWMTM 76.0° / 103.0°
Efficiency 88 %
Peak intensity 0.6 cd/lm
LEDs/each optic 1
Light colour/type White
Required components:



Light distribution files

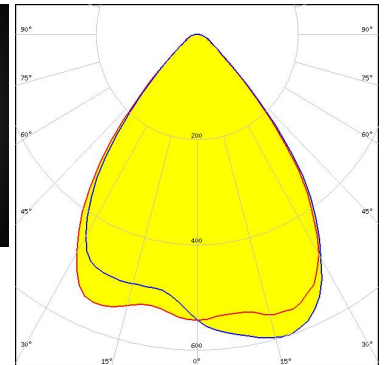
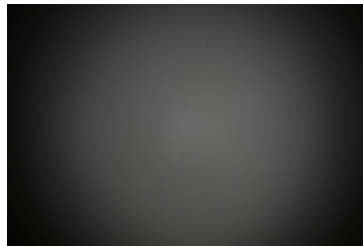
OPTICAL RESULTS (MEASURED):



LED NVSxx19A
FWHM / FWTM 78.0° / 108.0°
Efficiency 91 %
Peak intensity 0.6 cd/lm
LEDs/each optic 1
Light colour/type White
Required components:



LED Duris S5 (2 chip)
FWHM / FWTM 80.0° / 107.0°
Efficiency 88 %
Peak intensity 0.6 cd/lm
LEDs/each optic 1
Light colour/type White
Required components:



Light distribution files

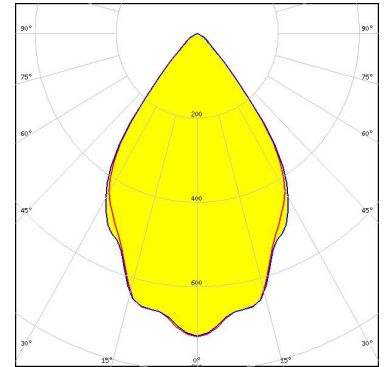


LED OSLOM SSL 150
FWHM / FWTM 68.0° / 97.0°
Efficiency 88 %
Peak intensity 0.7 cd/lm
LEDs/each optic 1
Light colour/type White
Required components:

OPTICAL RESULTS (MEASURED):

OSRAM
Opto Semiconductors

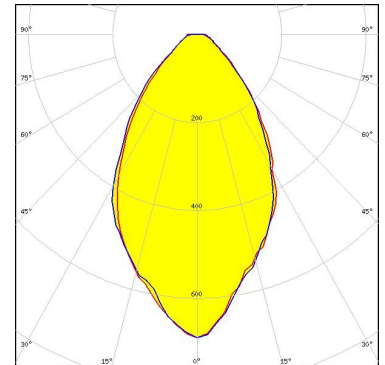
LED OSLON SSL 80
FWHM / FWTM 69.0° / 93.0°
Efficiency 88 %
Peak intensity 0.7 cd/lm
LEDs/each optic 1
Light colour/type White
Required components:



Light distribution files

SEOL
SEOUL SEMICONDUCTOR

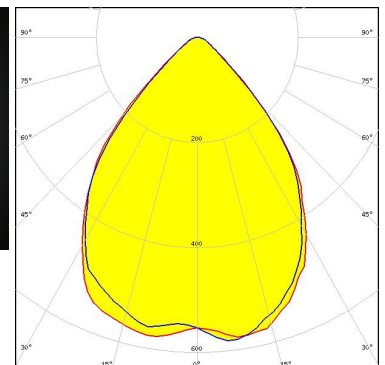
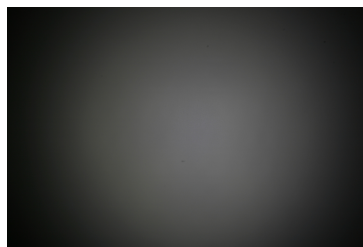
LED Z5
FWHM / FWTM 62.0° / 112.0°
Efficiency 89 %
Peak intensity 0.7 cd/lm
LEDs/each optic 1
Light colour/type White
Required components:



Light distribution files

SEOL
SEOUL SEMICONDUCTOR

LED Z5M1/Z5M2
FWHM / FWTM 82.0° / 110.0°
Efficiency 90 %
Peak intensity 0.6 cd/lm
LEDs/each optic 1
Light colour/type White
Required components:

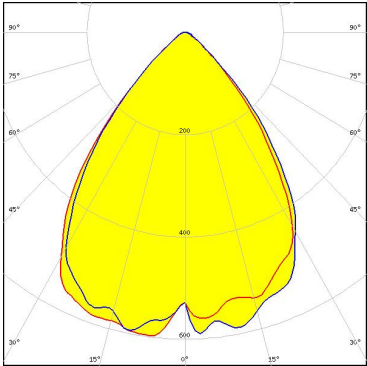


Light distribution files

OPTICAL RESULTS (SIMULATED):

NICHIA

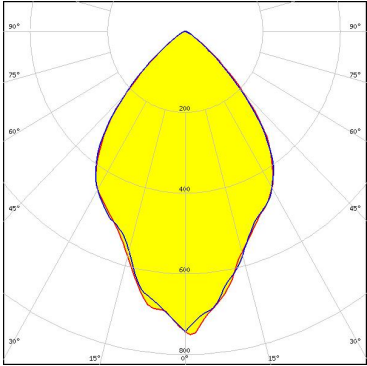
LED	NF2x757G
FWHM / FWTM	75.0° / 104.0°
Efficiency	88 %
Peak intensity	0.6 cd/lm
LEDs/each optic	1
Light colour/type	White
Required components:	



Light distribution files

OSRAM
Opto Semiconductors

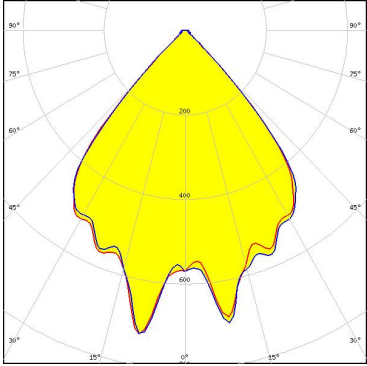
LED	OSLON Square CSSRM2/CSSRM3
FWHM / FWTM	73.0° / 106.0°
Efficiency	94 %
Peak intensity	0.8 cd/lm
LEDs/each optic	1
Light colour/type	White
Required components:	



Light distribution files


OSRAM
Opto Semiconductors

LED	SYNIOS S2222
FWHM / FWTM	81.0° / 96.0°
Efficiency	95 %
Peak intensity	0.7 cd/lm
LEDs/each optic	1
Light colour/type	White
Required components:	



Light distribution files

OPTICAL RESULTS (SIMULATED):

 SEUL SEMICONDUCTOR	
LED	Z8Y22P
FWHM / FWTM	84.0°
Efficiency	90 %
Peak intensity	0.5 cd/lm
LEDs/each optic	1
Light colour/type	White
Required components:	

Light distribution files

GENERAL INFORMATION:

NOTE: The typical beam angle will be changed by different color, chip size and chip position tolerance. The typical total beam angle is the full angle measured where the luminous intensity is half of the peak value.

MATERIALS:

As part of our continuous research and improvement processes, and to ensure the best possible quality and availability of our products, LEDiL reserves the right to change material grades without notice.

PRODUCT DATA USER AGREEMENT AND DISCLAIMER:

The measured data in the provided downloadable LEDiL Product Datasheets and Mechanical 2D-Drawings is rounded and provided as reference for planning. LEDiL Oy's optical specifications have been verified by conducting performance testing of the products in accordance with the company's quality system. The reported data are averaged results of multiple measurements with typical variation. LEDiL Oy reserves the right to without prior notification make changes and improvements to its products.

LEDiL Oy assumes neither warranty, nor guarantee nor any other liability of any kind for the contents and correctness of the provided data. The provided data has been generated with highest diligence but the provided data may in reality not represent the complete possible variation range of all intrinsic parameters. Therefore, in certain cases a deviation from the provided data could occur.

LEDiL Oy reserves the right to undertake technical changes of its products without further notification which could lead to changes in the provided data. LEDiL Oy assumes no liability of any kind for the possible deviation from any provided data or any other damage resulting from the usage of the provided data.

The user agrees to this disclaimer and user agreement with the download or usage of the provided files.

LEDiL Oy

Joensuunkatu 7
FI-24240 SALO
Finland

LEDiL Inc.

228 West Page Street
Suite D
Sycamore IL 60178
USA

Ledil Optics Technology (Shenzhen) Co., Ltd.

405 , Block B
Casic Motor Building
Shenzhen 518057
P.R.CHINA

Local sales and technical support

[www.ledil.com/
where_to_buy](http://www.ledil.com/where_to_buy)

Shipping locations

Poznan, Poland
Hong Kong, China

Distribution Partners

[www.ledil.com/
where_to_buy](http://www.ledil.com/where_to_buy)