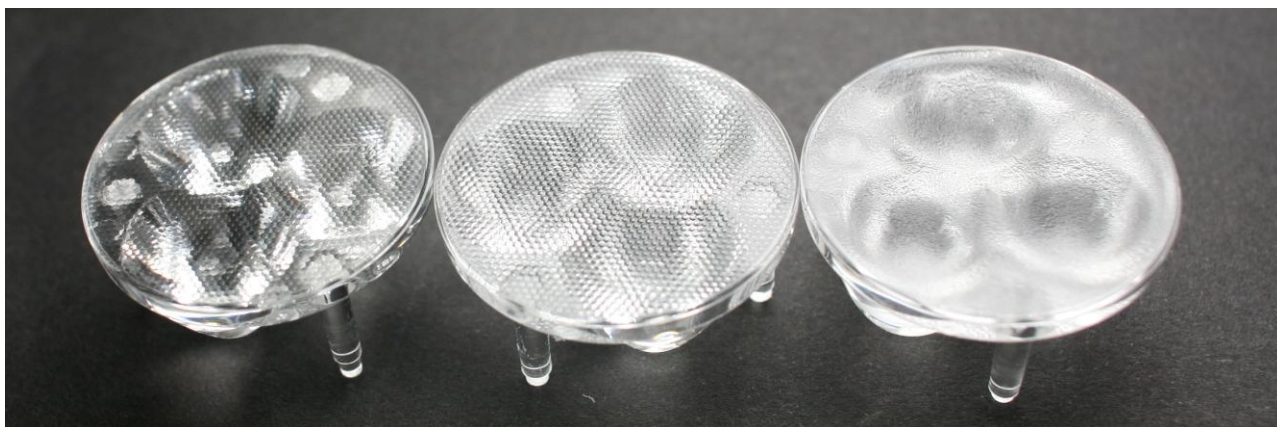
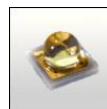


## Cute-3-series (MR11) for Osram Oslon SSL/SX LEDs



- Specially designed for Osram Oslon SSL series of LEDs.
- Special care taken to make a uniform white or warm white illumination.
- Lens material optical grade PMMA with high UV and temperature resistance (105°C/220°F). Allows use of high current and temperature conditions
- No lens holder. Fastening to heat sink with droplets of glue.
- Best available optical efficiency, up to 90%.
- Please check fastening details from this link:  
([http://www.ledil.com/datasheets/DataSheet\\_GLUES.pdf](http://www.ledil.com/datasheets/DataSheet_GLUES.pdf))

### LENS TYPES

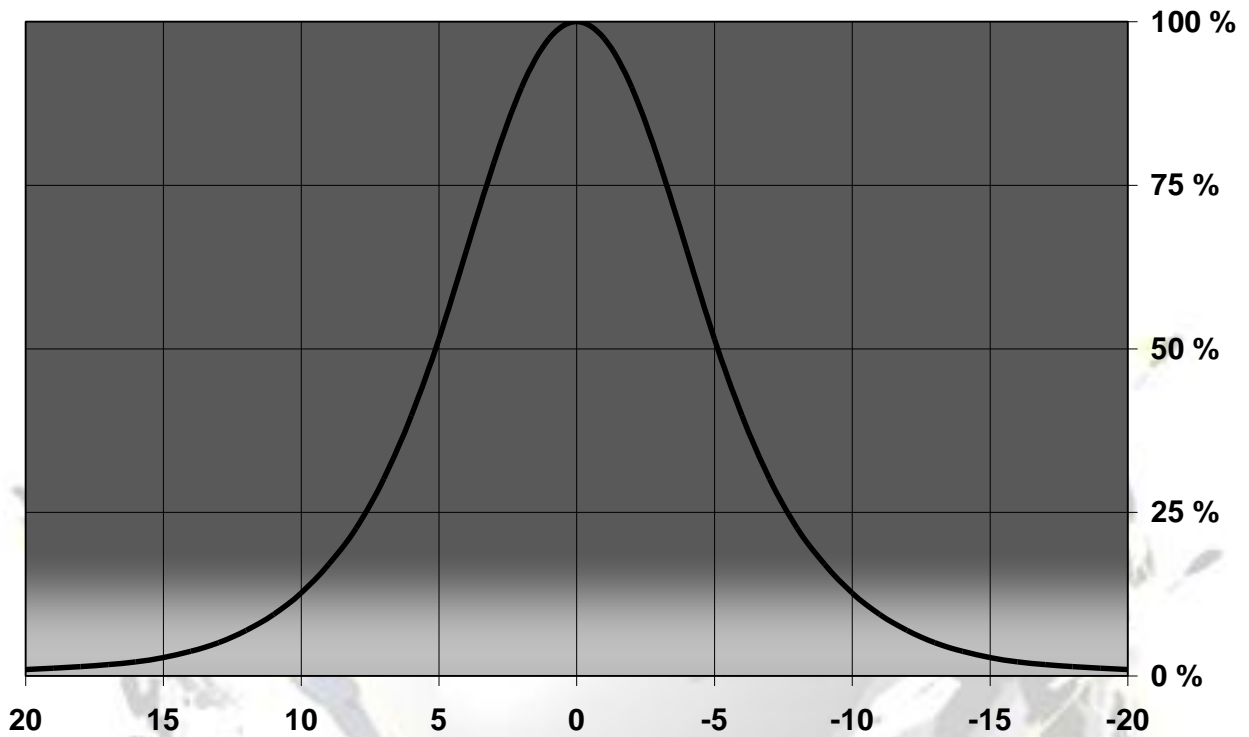
NAME	ORDERING CODE	FWHM Angle
Cute-3 Smooth Spot	C10754_Cute-3-SS-OSL	±5°
Cute-3 Medium	C10755_Cute-3-M-OSL	±11°
Cute-3 Wide	C10756_Cute-3-W-OSL	±20°

NAME	ORDERING CODE	FWHM Angle
Cute-3 Smooth Spot	C10754_Cute-3-SS-OSL-SX	to be measured shortly
Cute-3 Medium	C10755_Cute-3-M-OSL-SX	to be measured shortly
Cute-3 Wide	C10756_Cute-3-W-OSL-SX	to be measured shortly

© Ledil Oy - PRELIMINARY - Subject to change without prior notice

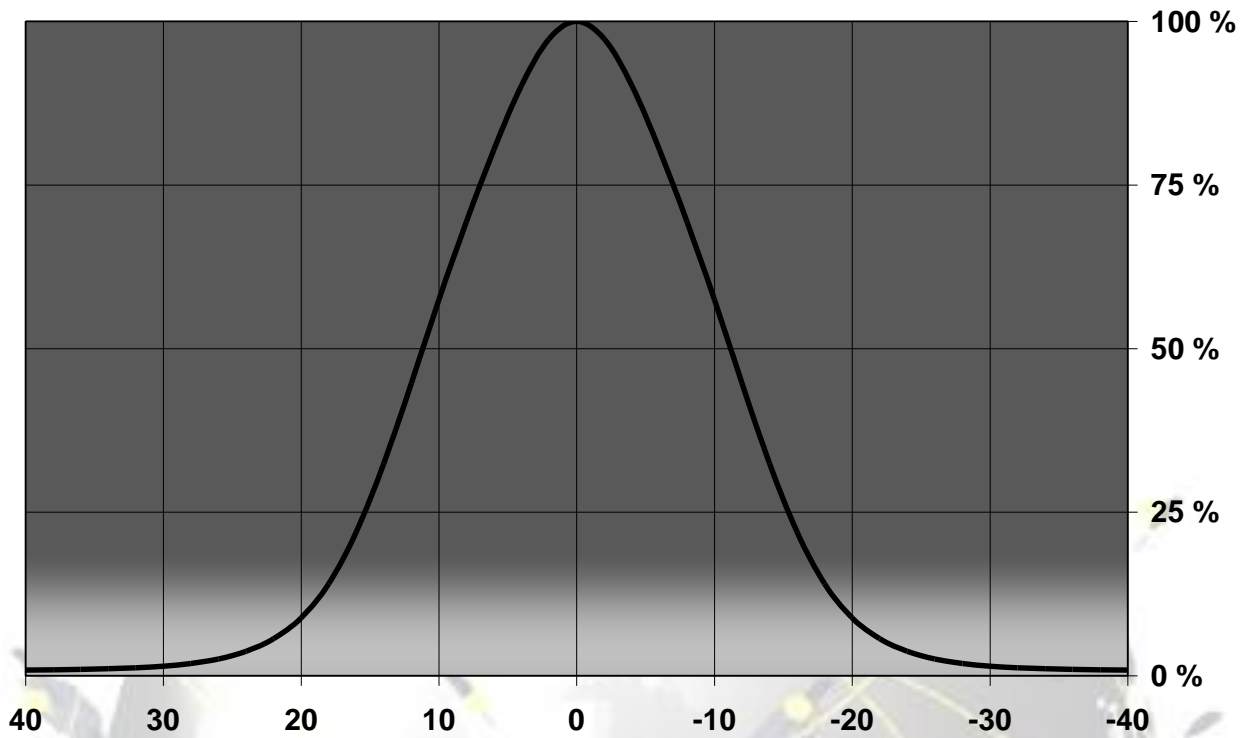
## MEASUREMENT DATA

Relative Intensity of C10754\_Cute-3-SS-OSL



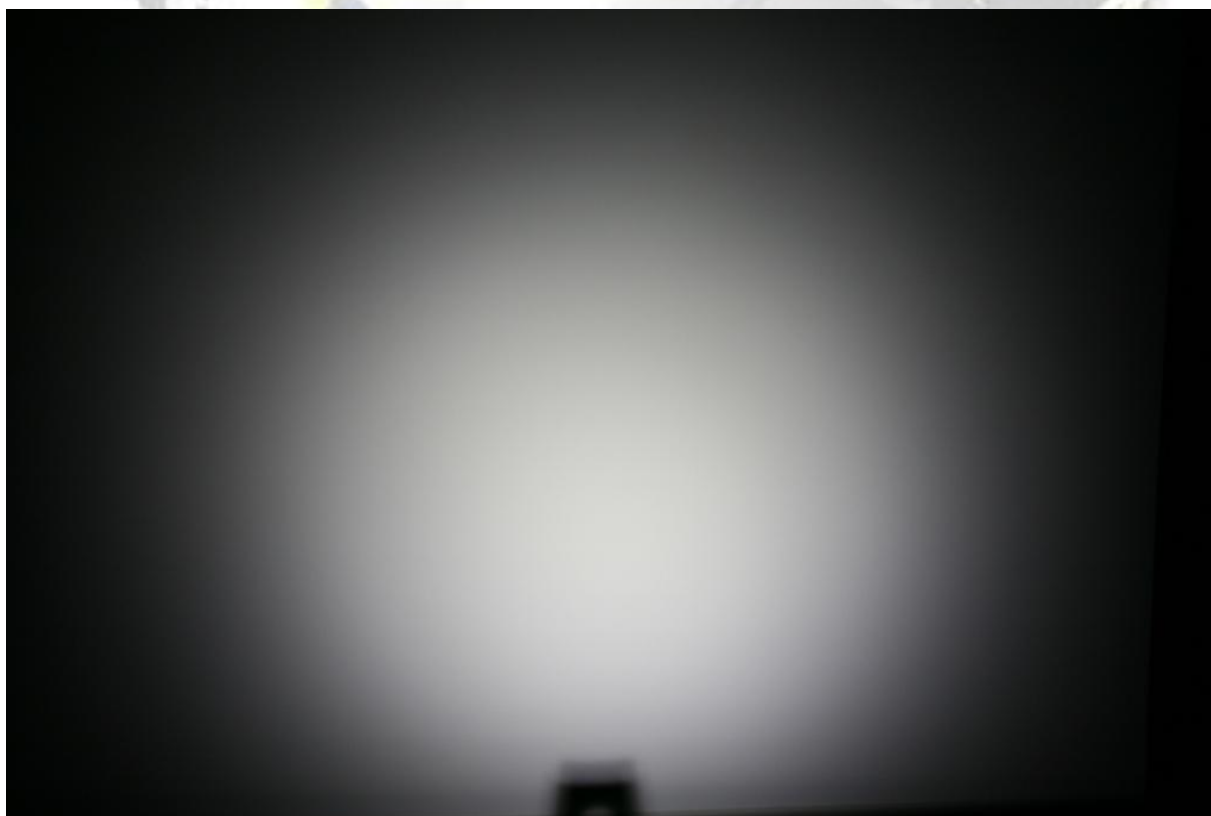
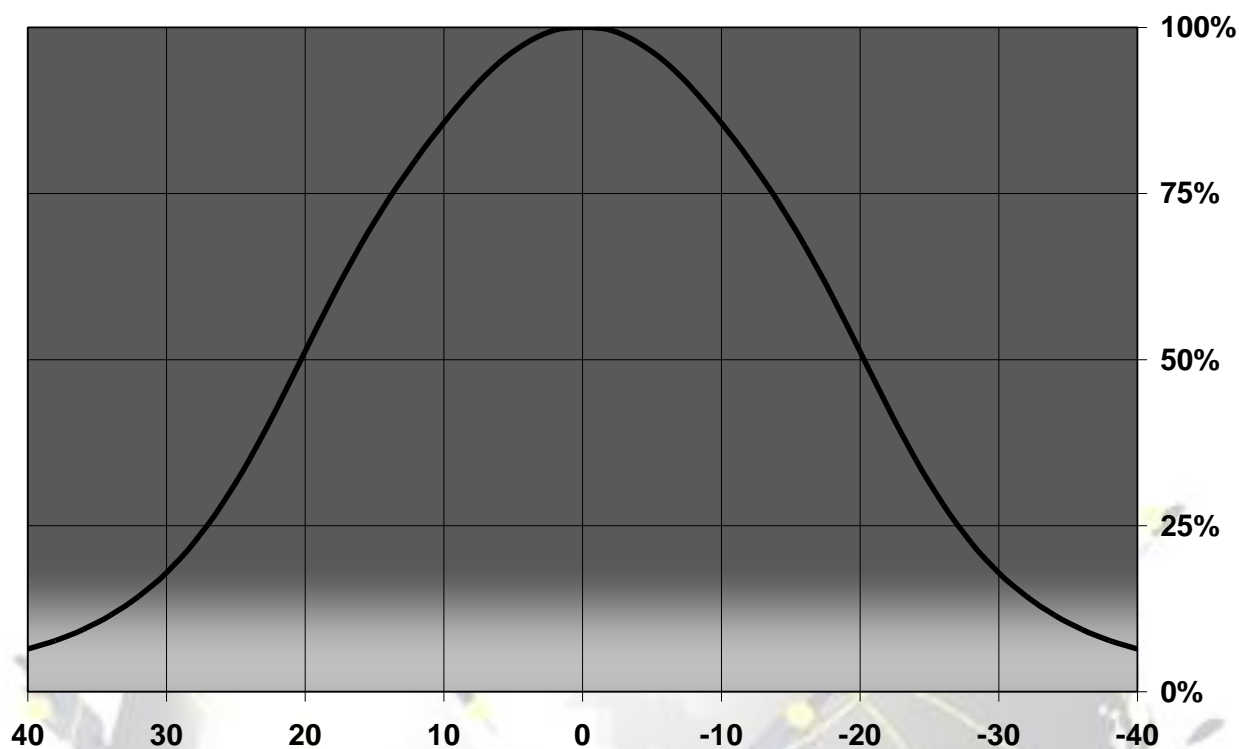
© Ledil Oy – PRELIMINARY - Subject to change without prior notice

Relative Intensity of C10755\_Cute-3-M-OSL



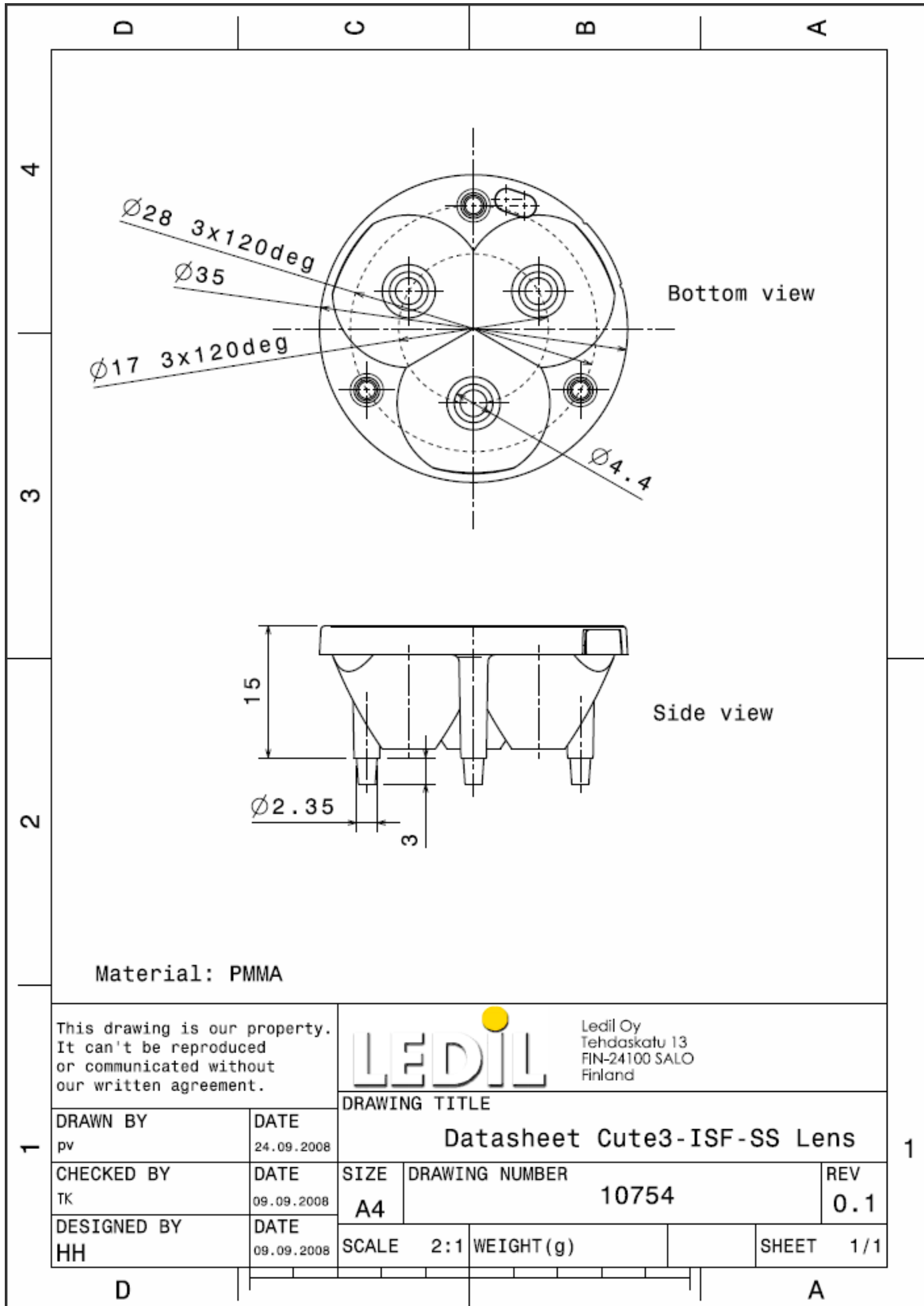
© Ledil Oy – PRELIMINARY - Subject to change without prior notice

Relative Intensity of C10756\_Cute-3-ISF-W-OSL



© Ledil Oy – PRELIMINARY - Subject to change without prior notice

## DRAWINGS



© Ledil Oy - PRELIMINARY - Subject to change without prior notice