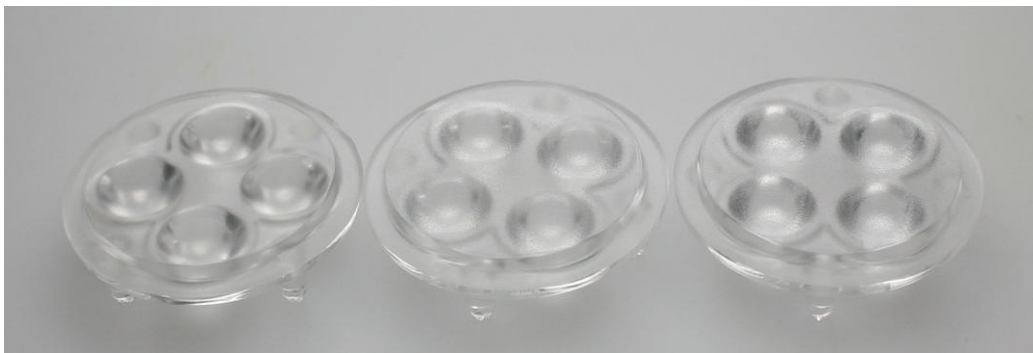


## GT4-RE lenses for Luxeon Rebel LEDs

LUXEON



- Specially designed for Luxeon Rebel series of LEDs.
- Special care taken to make a uniform white or warm white illumination.
- Lens material optical grade PMMA with high UV and temperature resistance (105°C/220°F). Allows use of high current and temperature conditions.
- No lens holder. Fastening to heat sink with droplets of glue.
- Please check fastening details from this link: ([http://www.ledil.com/datasheets/DataSheet\\_GLUES.pdf](http://www.ledil.com/datasheets/DataSheet_GLUES.pdf))
- Diameter 35 mm (MR11)
- Best available optical efficiency, up to 90%.

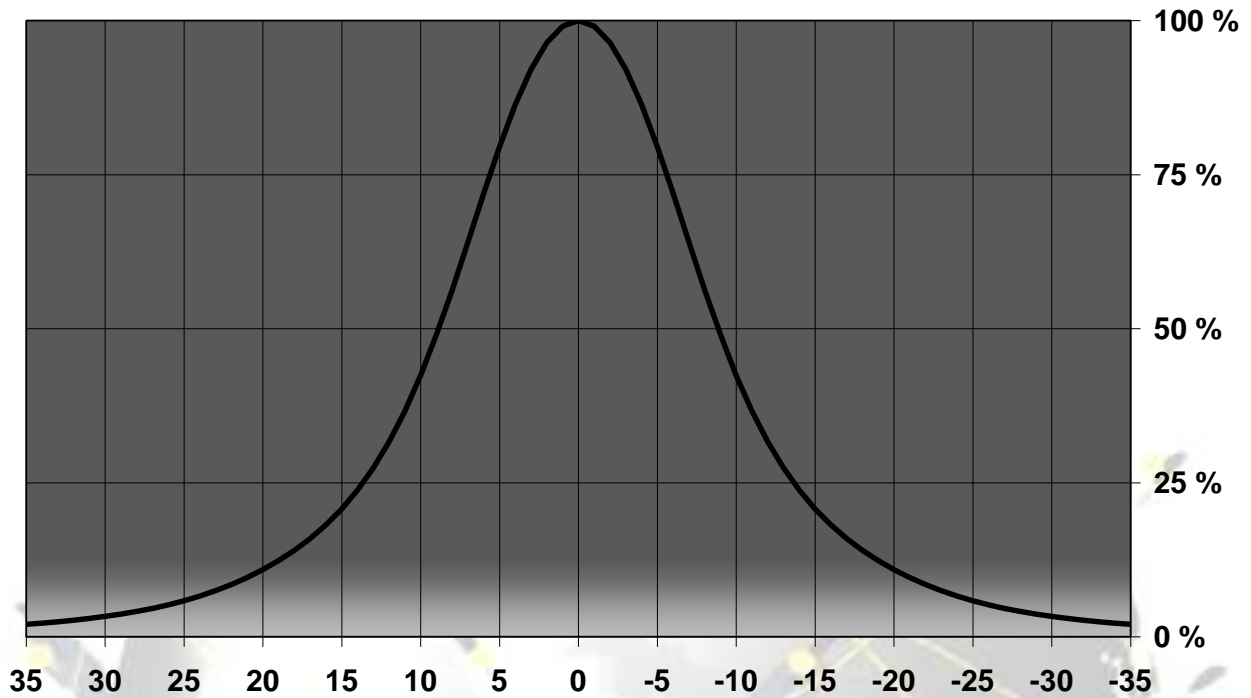
## LENS TYPES

NAME	ORDERING CODE	FWHM
GT4-RE Smooth Spot	C10971_GT4-RE-S	±8.5°
GT4-RE Medium	C10972_GT4-RE-M	±14°
GT4-RE Wide	C10973_GT4-RE-W	±17°
GT4-RE WW	C10974_GT4-RE-WW	±24°

© Ledil Oy – PRELIMINARY - Subject to change without prior notice

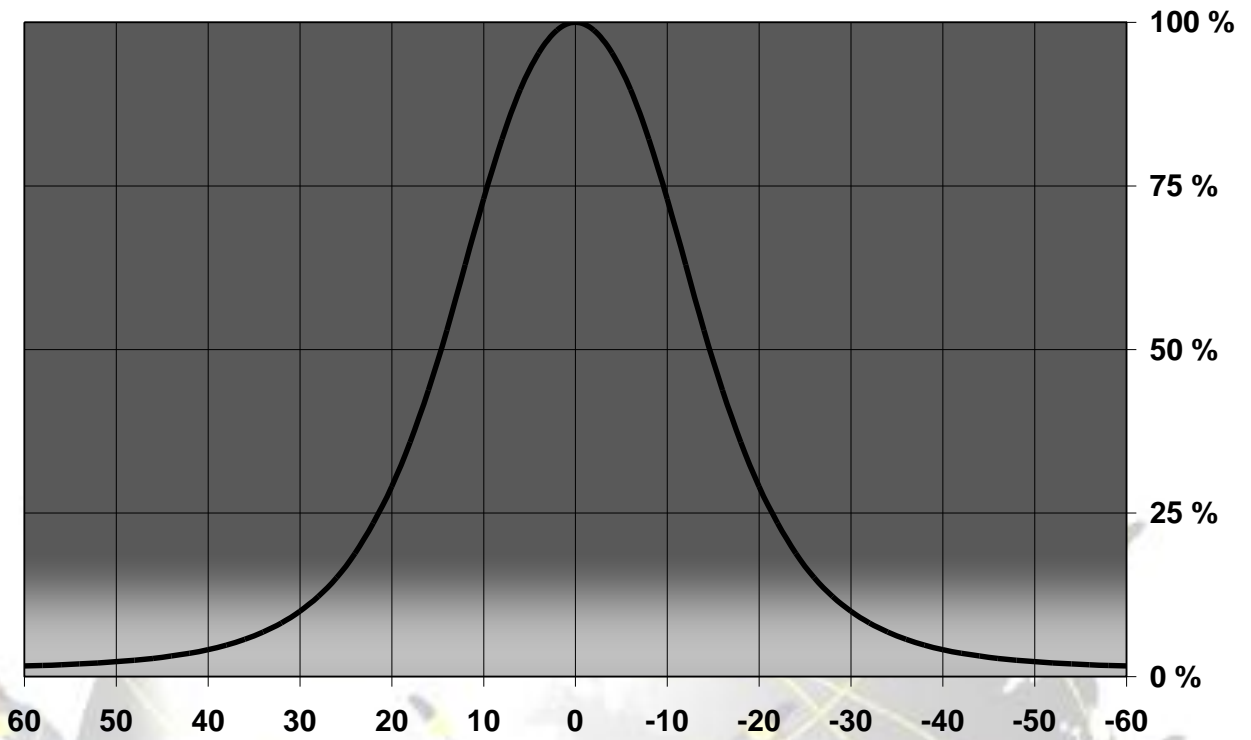
**MEASUREMENT DATA**

Relative Intensity of C10971\_GT4-RE-S



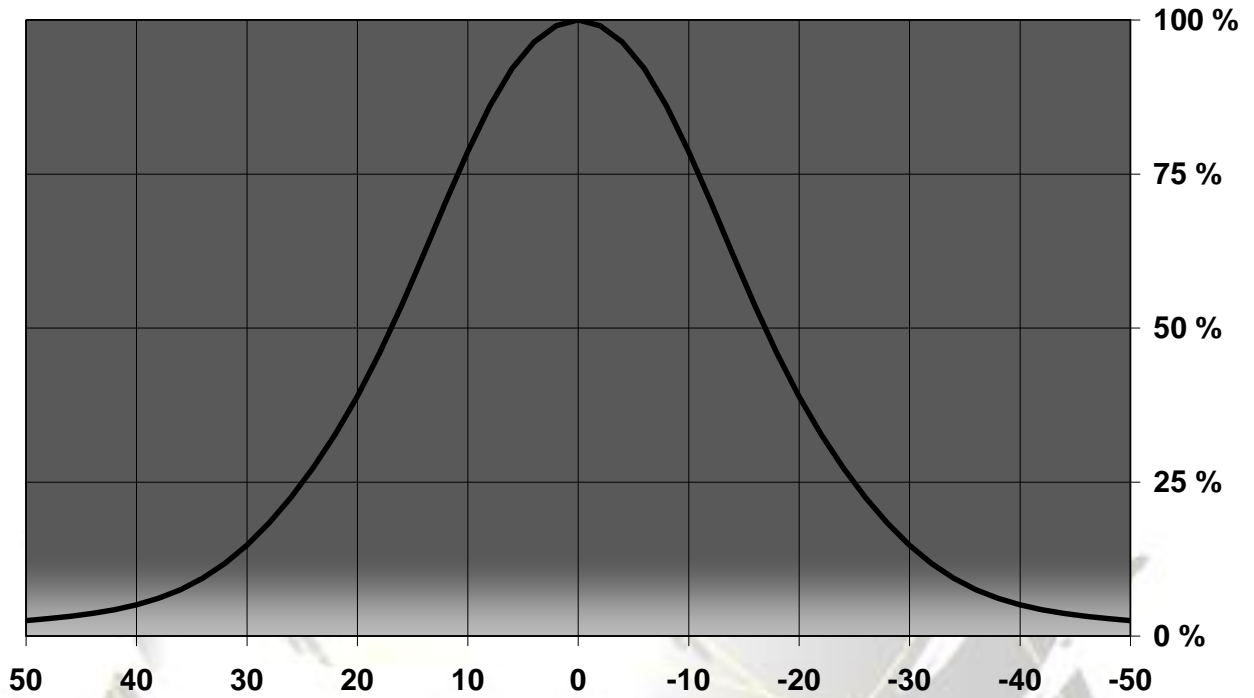
© Ledil Oy - PRELIMINARY - Subject to change without prior notice

Relative Intensity of C10972\_GT4-RE-M



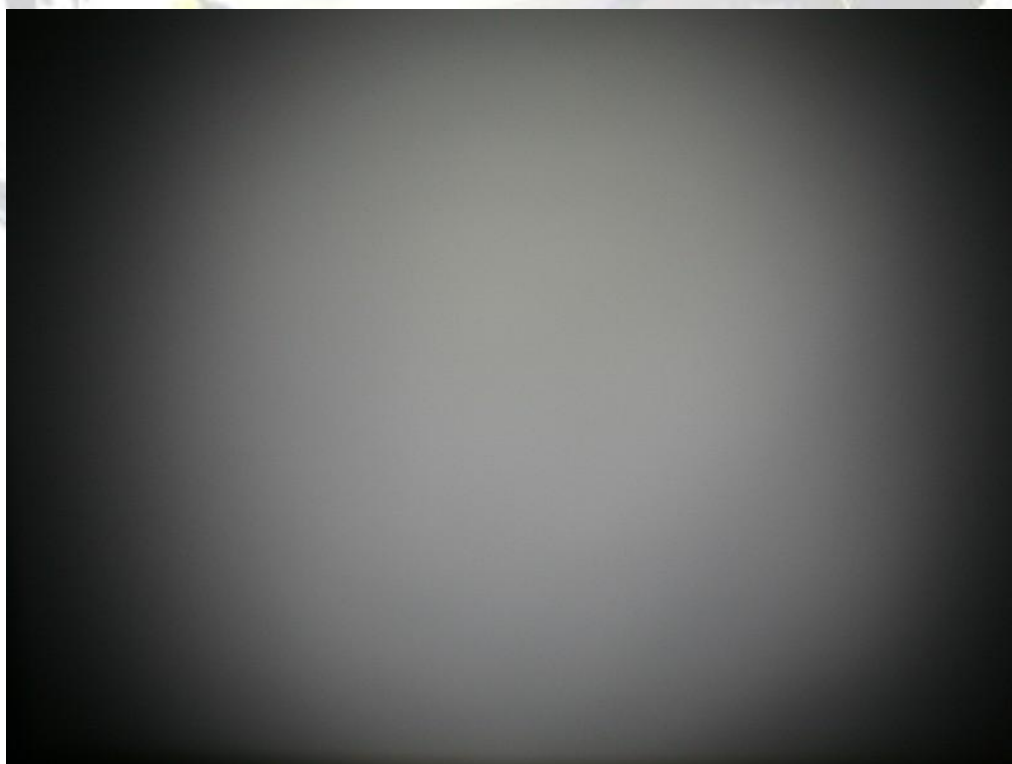
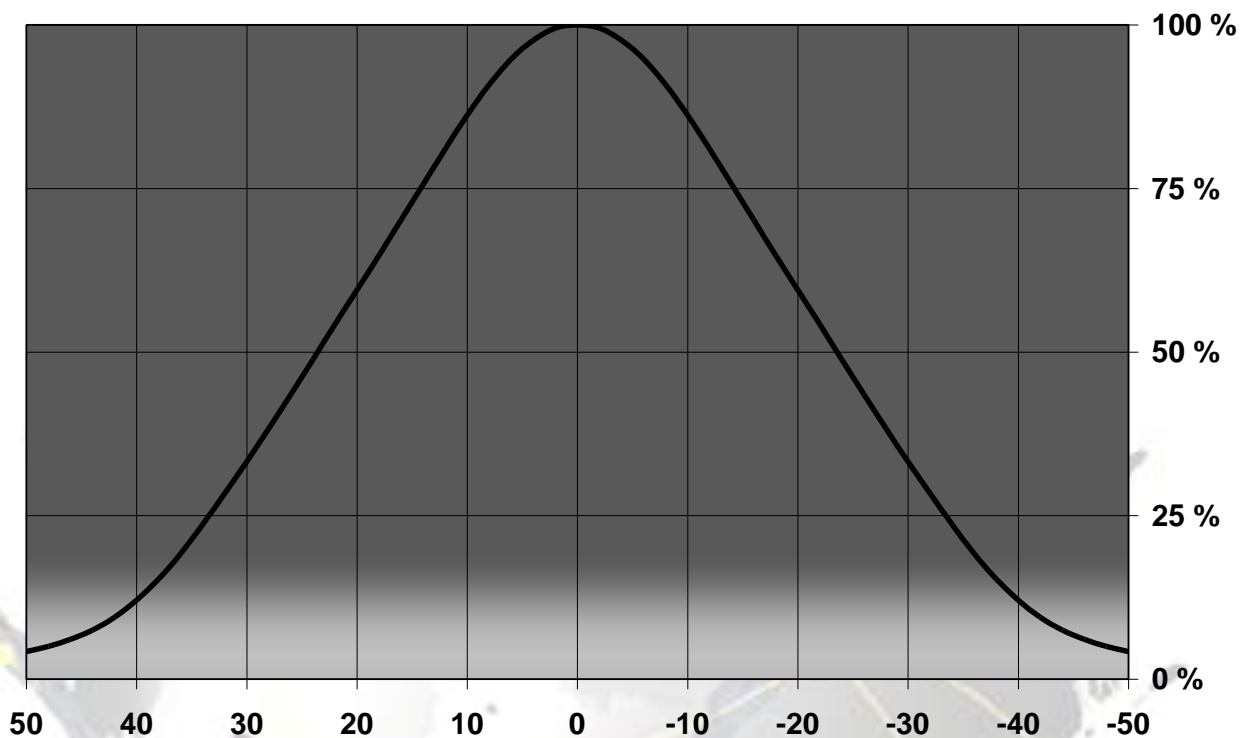
© Ledil Oy - PRELIMINARY - Subject to change without prior notice

Relative Intensity of C10973\_GT4-RE-W



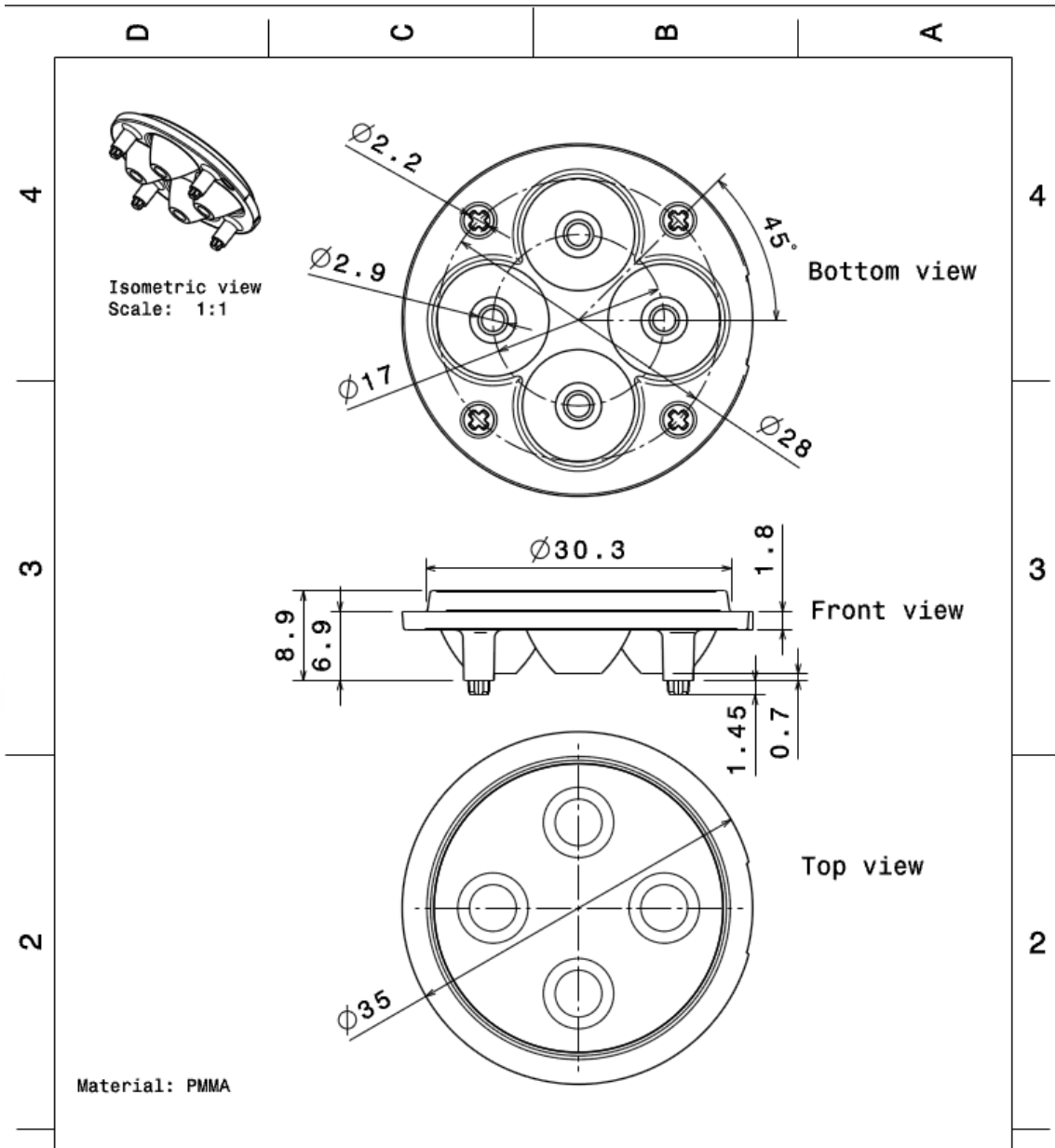
© Ledil Oy - PRELIMINARY - Subject to change without prior notice

Relative Intensity of C10974\_GT4-RE-WW



© Ledil Oy - PRELIMINARY - Subject to change without prior notice

## DRAWINGS



This drawing is our property.  
It can't be reproduced  
or communicated without  
our written agreement.



Ledil Oy  
Tehdaskatu 13  
FIN-24100 SALO  
Finland

DRAWING TITLE

Datasheet GT4 Lens

DRAWN BY

pv

DATE

03.08.2009

CHECKED BY

hh

DATE

03.08.2009

DESIGNED BY

hh

DATE

23.07.2009

SIZE

A4

DRAWING NUMBER

C10971, 10973

REV

1

SCALE

2:1

WEIGHT (g)

SHEET

1/1