

LISA2-CLIP16-XP-G MINIATURE LENS FOR CREE XP-G SERIES OF LEDS



- Lens material optical grade PMMA with high UV and temperature resistance (105°C/220°F). Lens holder molded of high quality black PC (120°C/248°F)
- High optical efficiency, up to 90%.
- Integrated holder with small snap clips. See drawing below for more details of fastening the holder to PCB.
- Very small and compact dimensions: Diameter 9.9 mm, height 6.8 mm.

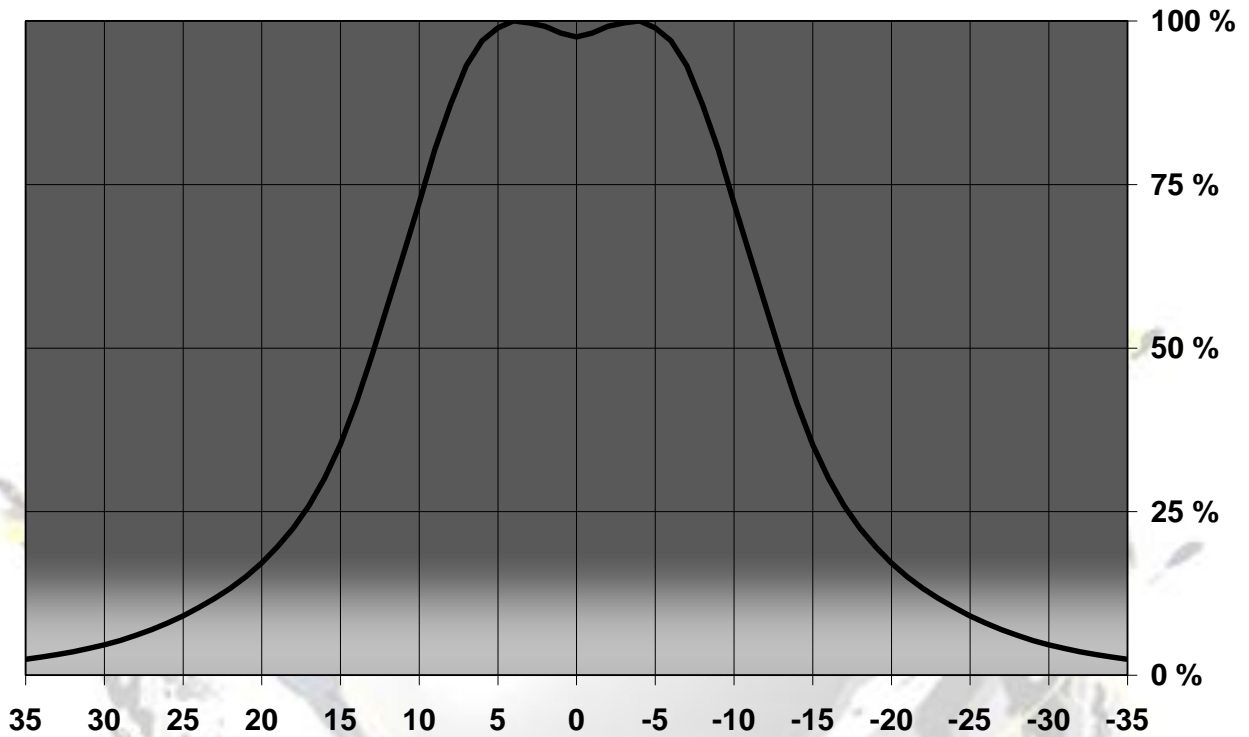
LENS TYPES

NAME	ORDERING CODE	FWHM Angle
Lisa2-Clip16 Real Spot	FA11085_Lisa2-RS-clip16-XP-G	±13°
Lisa2-Clip16 Medium	FA11075_Lisa2-M-clip16-XP-G	±17°
Lisa2-Clip16 Oval	FA11121_Lisa2-O-clip16-XP-G	±12° x ±23°
Lisa2-Clip16 Wide	FA11076_Lisa2-W-clip16-XP-G	±24°
Lisa2-Clip16 WW	FA11077_Lisa2-WW-clip16-XP-G	±30°

© Ledil Oy - PRELIMINARY - Subject to change without prior notice

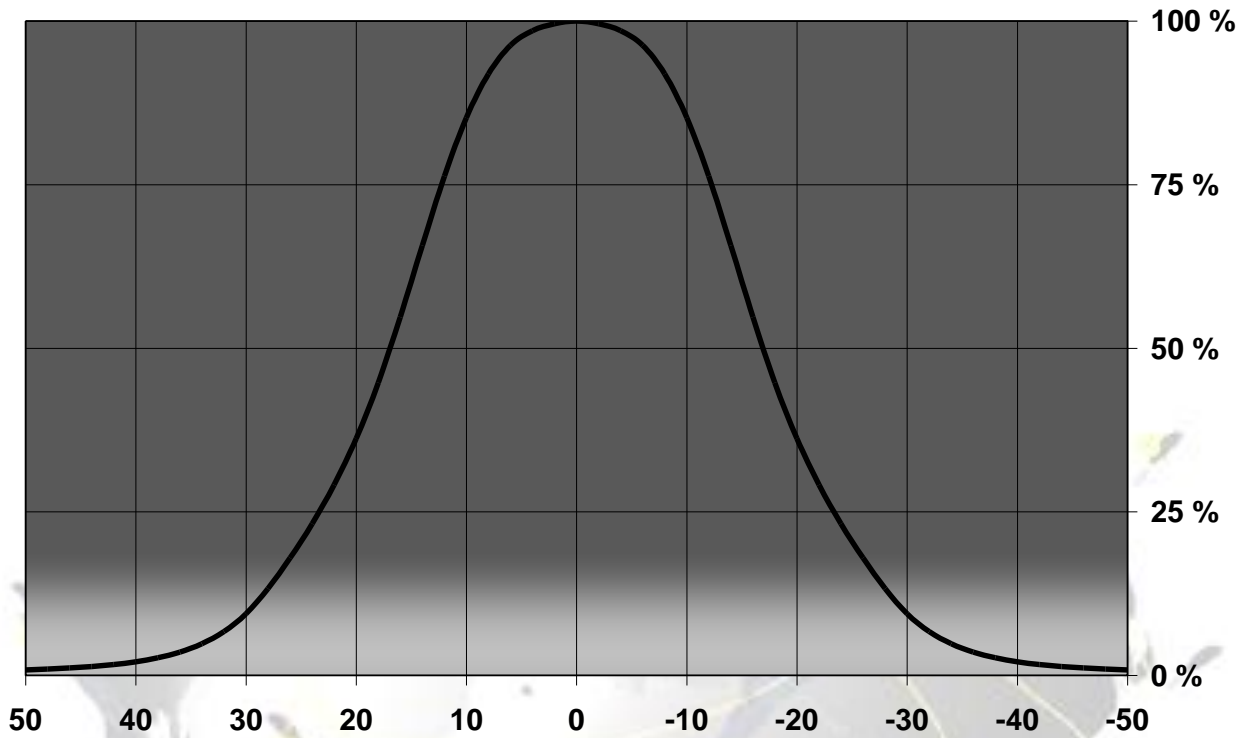
MEASUREMENT DATA

Relative Intensity of FA11055_Lisa2-RS-Pin-XP-G



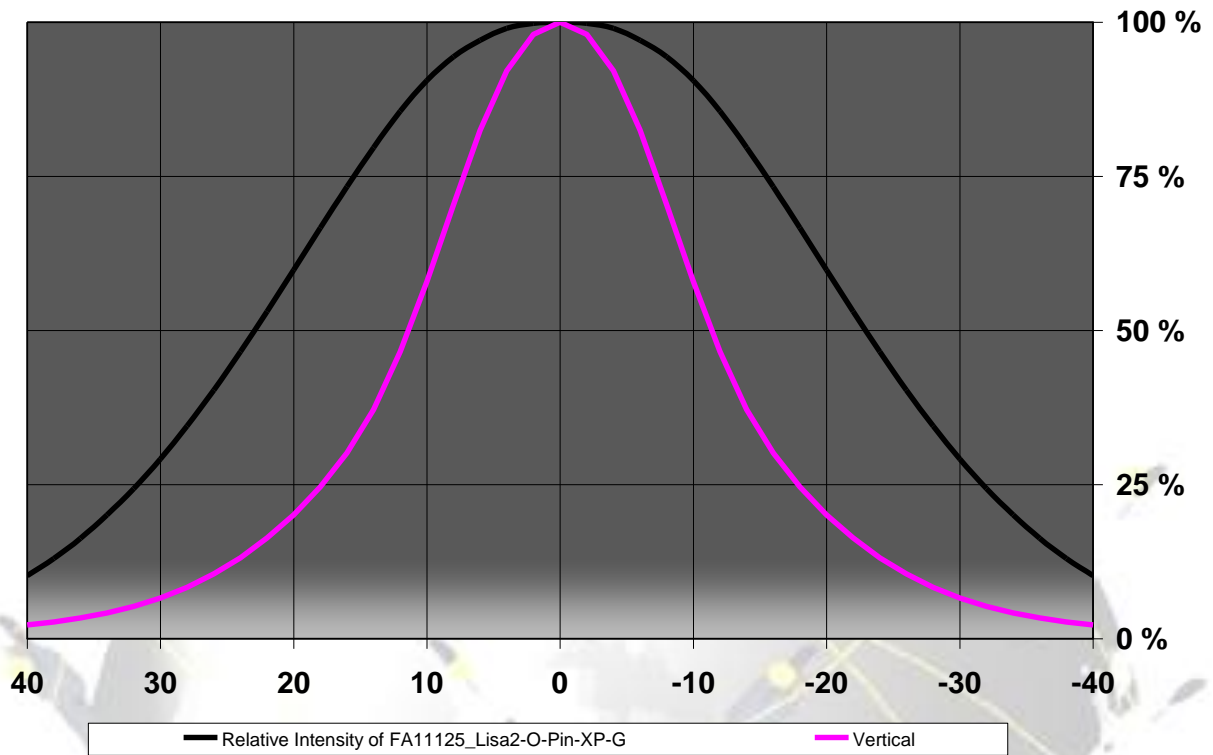
© Ledil Oy - PRELIMINARY - Subject to change without prior notice

Relative Intensity of FA10995_Lisa2-M-Pin-XP-G



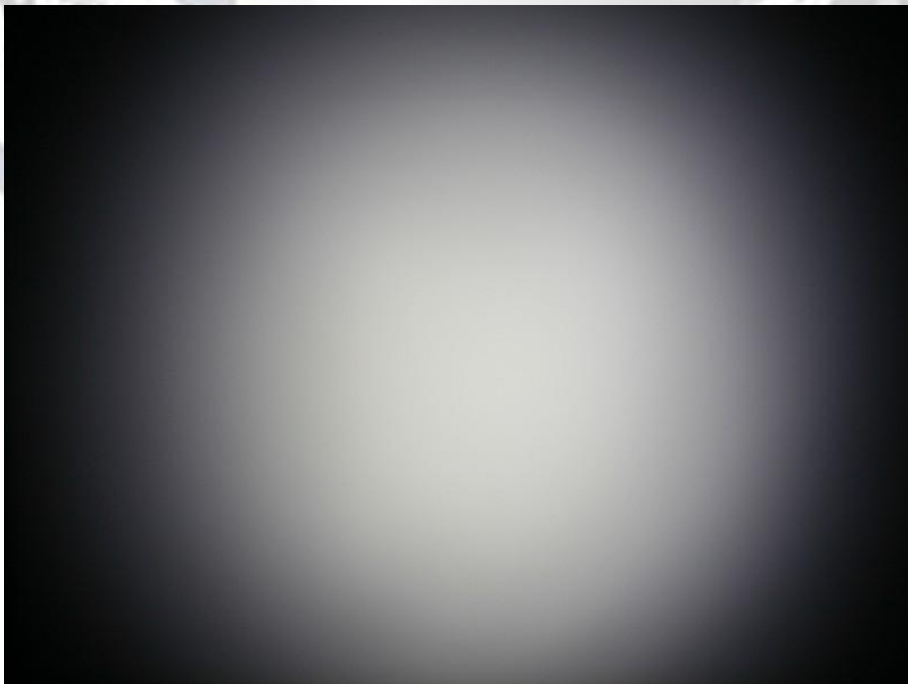
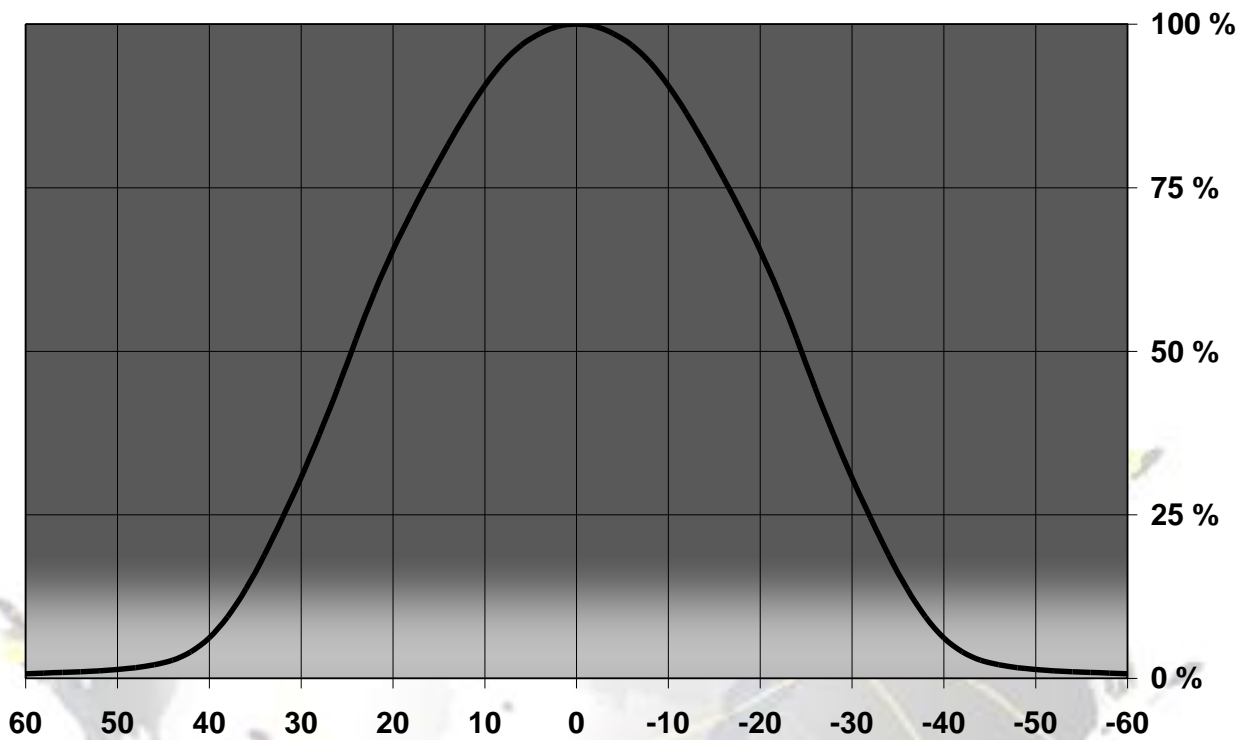
© Ledil Oy - PRELIMINARY - Subject to change without prior notice

Relative intensity of FA11125_Lisa2-O-Pin-XP-G



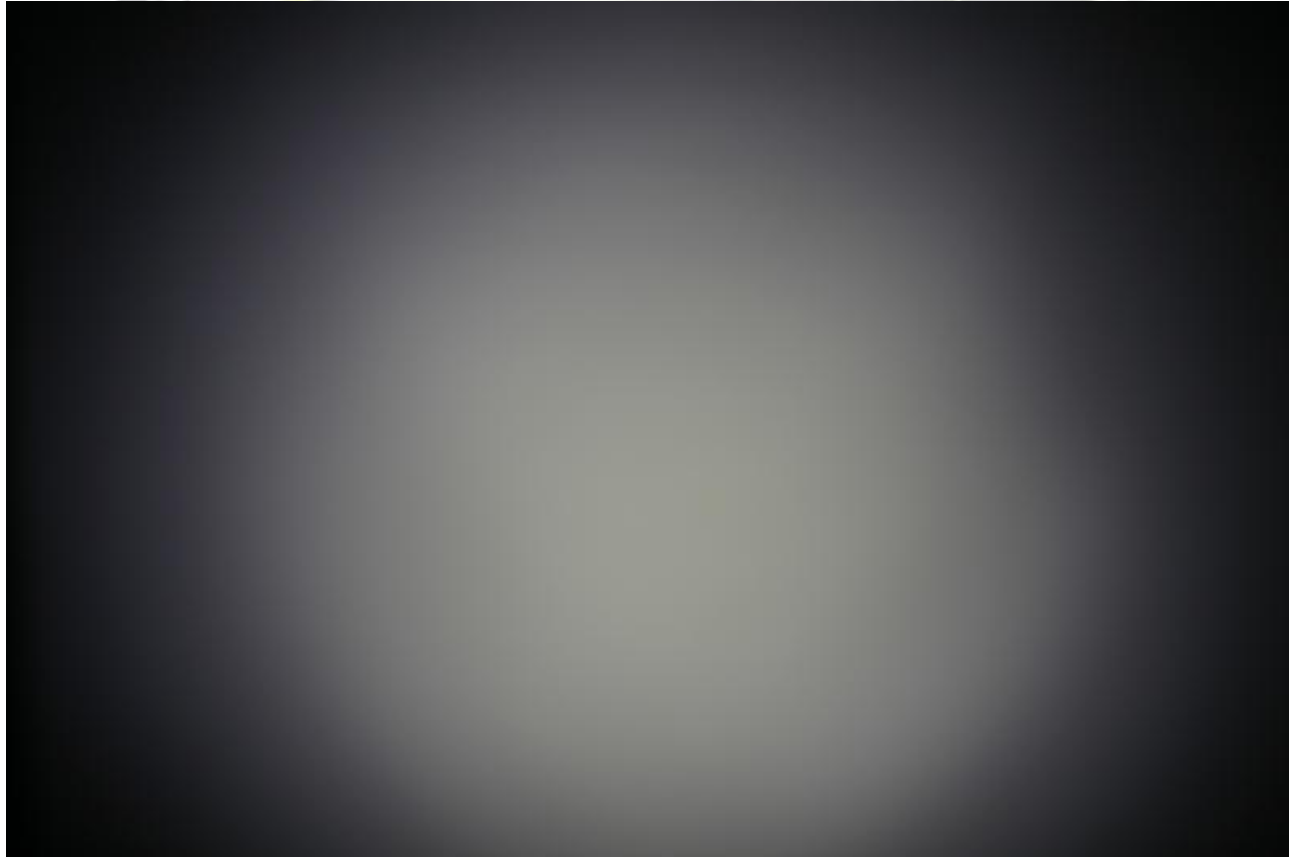
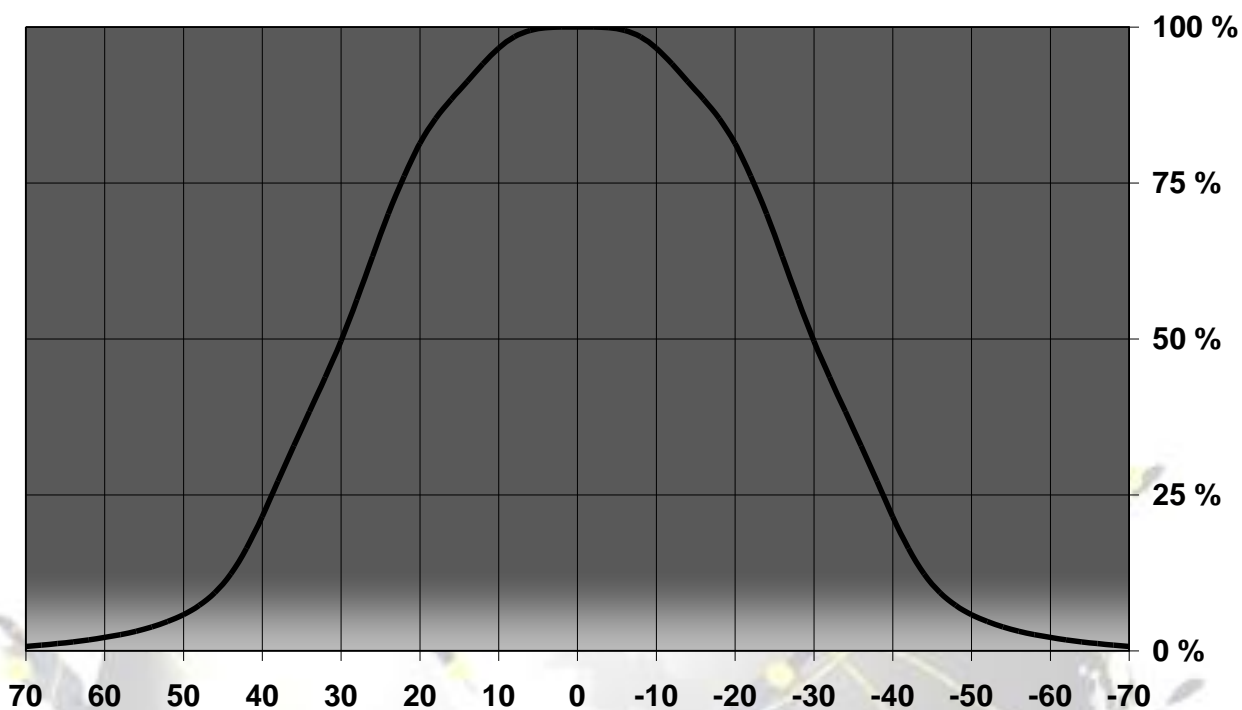
© Ledil Oy - PRELIMINARY - Subject to change without prior notice

Relative Intensity of FA10996_Lisa2-W-Pin-XP-G



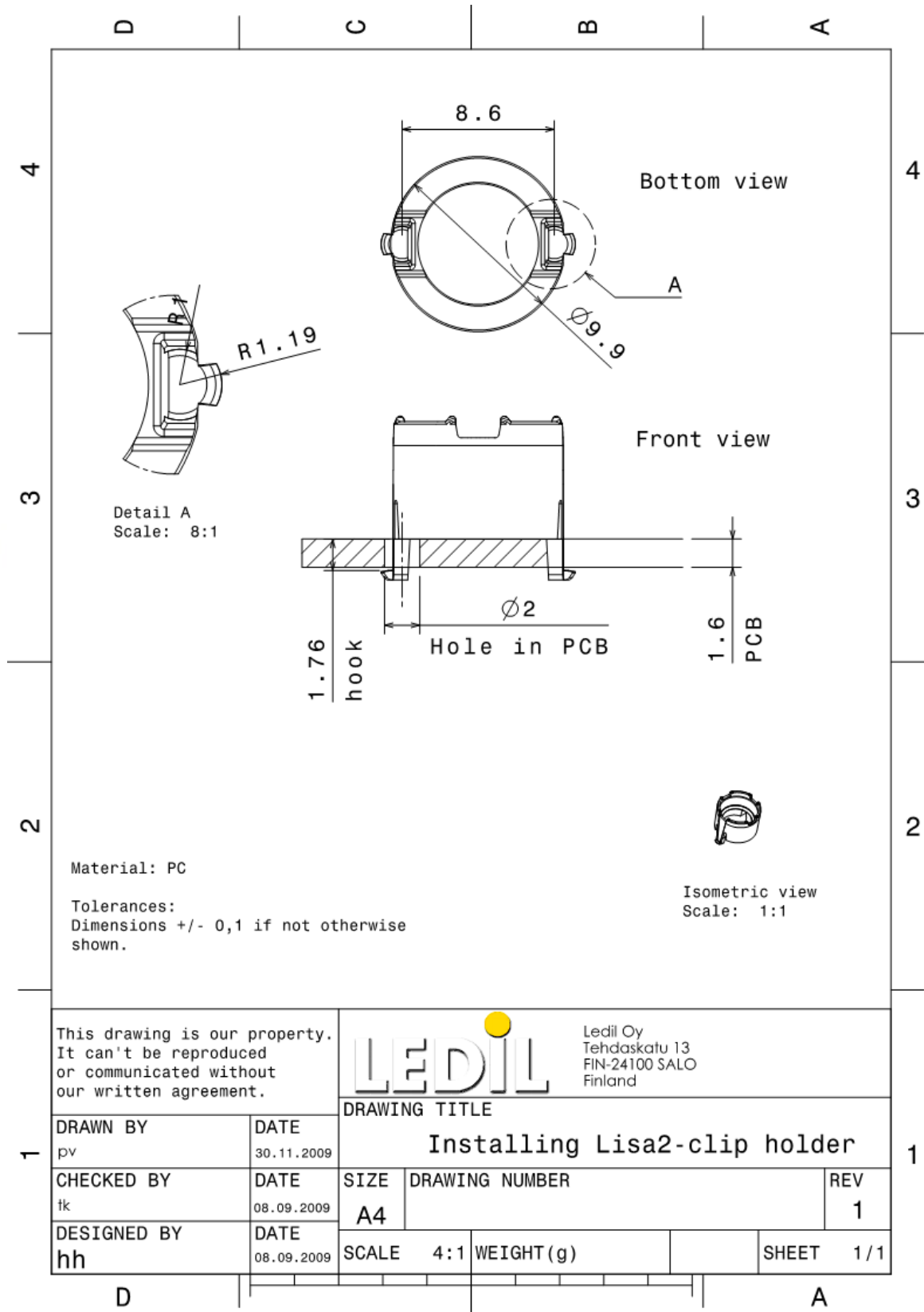
© Ledil Oy - PRELIMINARY - Subject to change without prior notice

Relative intensity of FA10997_Lisa2-WW-Pin-XP-G



© Ledil Oy - PRELIMINARY - Subject to change without prior notice

DRAWINGS



© Ledil Oy - PRELIMINARY - Subject to change without prior notice