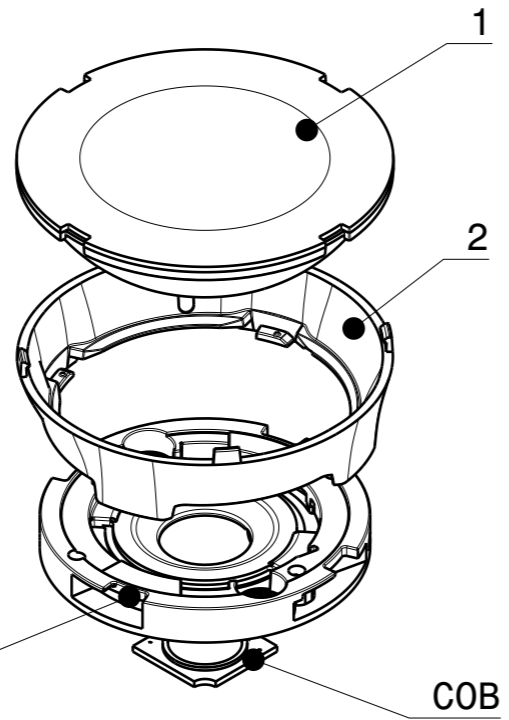
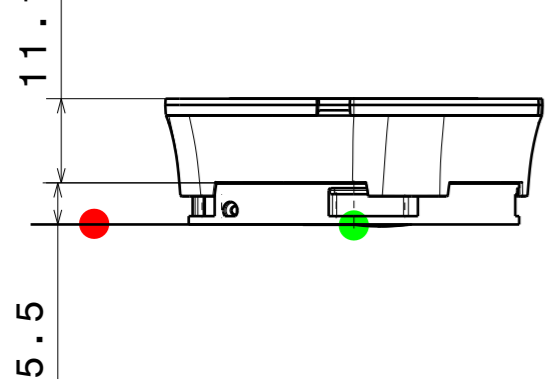


DATE
05.05.2023

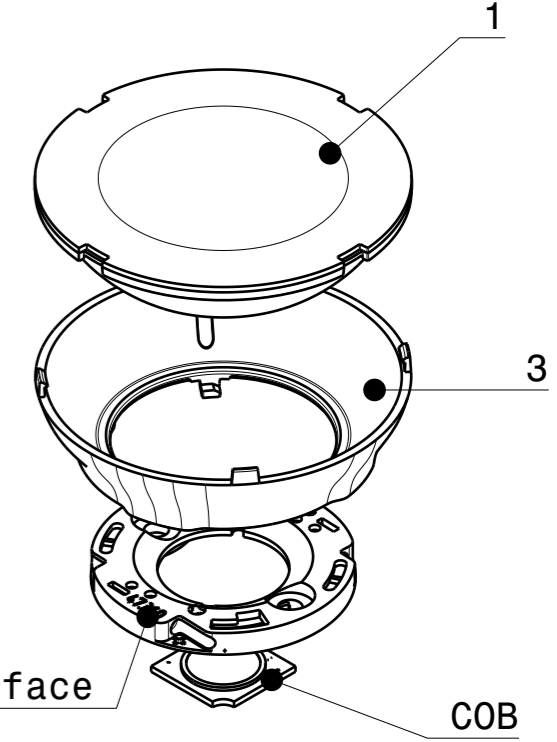
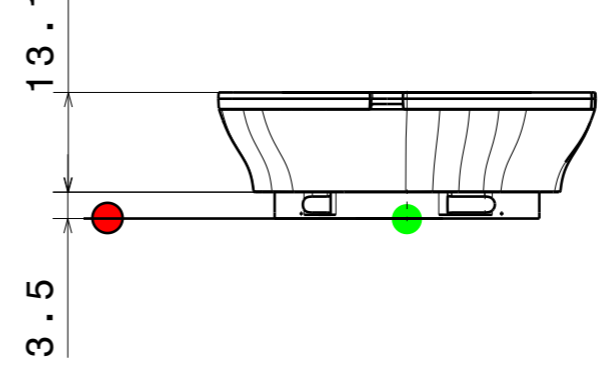
CP19127_ AMY-50-S2-C2
 CP19145_ AMY-50-S2-C2-WHT
 CP18855_ AMY-50-S2-C2-PC
 CP19379_ AMY-50-S2-C2-WHT-PC



HEKLA
Connector

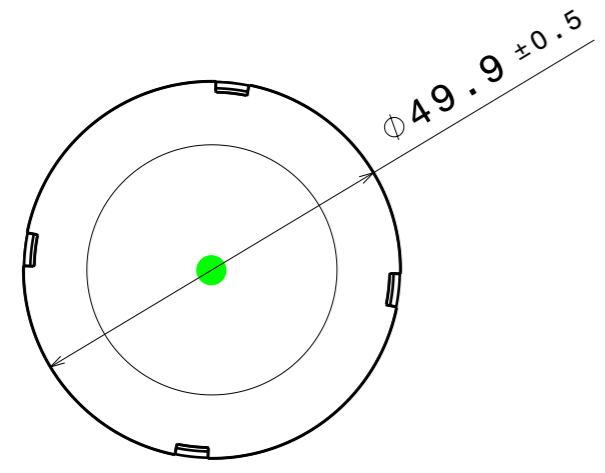
COB

CP19136_ AMY-50-S2-B2
 CP19154_ AMY-50-S2-B2-WHT
 CP18862_ AMY-50-S2-B2-PC
 CP19387_ AMY-50-S2-B2-WHT-PC



Connector
BJB / B+W 35mm-interface

COB



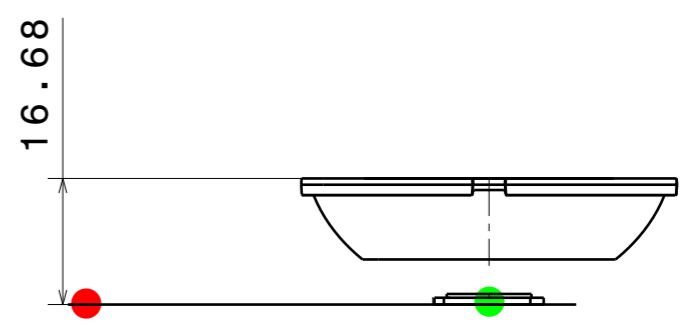
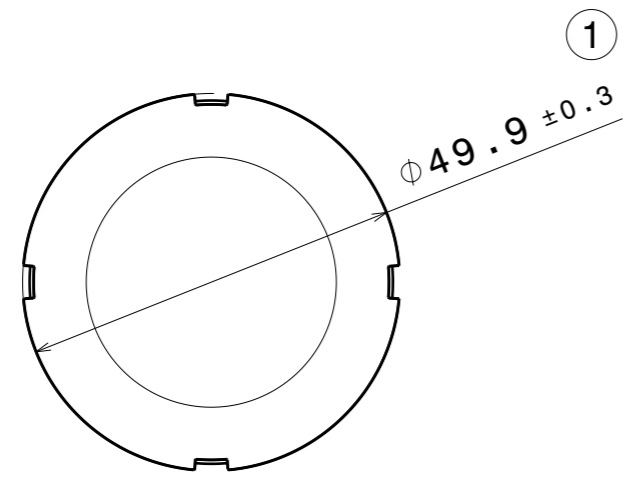
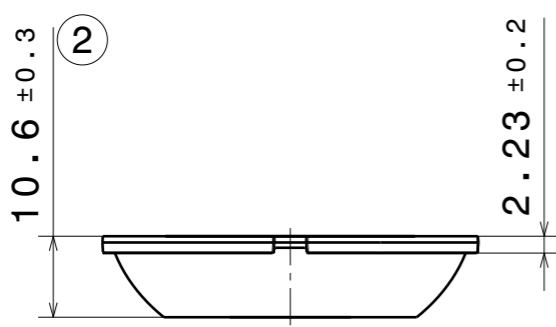
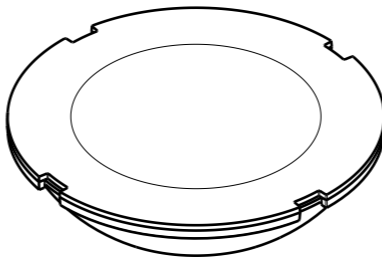
Top view
Scale: 1:1

INDEX	PART	TYPE	QTY	MATERIAL	COLOUR/COATING	ASSEMBLY CODES
1	AMY-50-S2	LENS	1			
	C17683_ AMY-50-S2			PMMA	CLEAR	
	C18848_ AMY-50-S2-PC			PC	CLEAR	
2	HOLDER C	HOLDER	1			
	C19017_ AMY-50-HLD2-C			PC	BLACK	CP19127_ AMY-50-S2-C2 CP18855_ AMY-50-S2-C2-PC
	C19019_ AMY-50-HLD2-C-WHT			PC	WHITE	CP19145_ AMY-50-S2-C2-WHT CP19379_ AMY-50-S2-C2-WHT-PC
3	HOLDER B					
	C19018_ AMY-50-HLD2-B			PC	BLACK	CP19136_ AMY-50-S2-B2 CP18862_ AMY-50-S2-B2-PC
	C19020_ AMY-50-HLD2-B-WHT			PC	WHITE	CP19154_ AMY-50-S2-B2-WHT CP19387_ AMY-50-S2-B2-WHT-PC

MECHANICAL DRAWING		LEDiL
PRODUCT AMY-50-S2		
Plastic moulding general tolerances according to DIN 16901-130 and applies if not otherwise shown in the drawing. Silicone moulding general tolerances according to ISO 3302-1 Class M3 and applies if not otherwise shown in the drawing.	FIRST ANGLE PROJECTION: 	This drawing is the property of LEDiL Oy. It may not be copied or otherwise distributed without prior written permission from LEDiL Oy.
SCALE 1:1	WEIGHT -	A3 SHEET 1/1

Notes

- PCB or heatsink level.
- LED location
- Ensure LED fitting from a product specific 3D model available from www.ledil.com
- For more details about installation please see LEDiL Installation Guide on www.ledil.com



PART	TYPE	MATERIAL	COLOR / COATING
C17683_AMY-50-S2	LENS	PMMA	CLEAR
C18848_AMY-50-S2-PC	LENS	PC	CLEAR

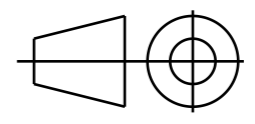
MECHANICAL DRAWING

PRODUCT **AMY-50-S2**



Plastic moulding general tolerances according to DIN 16901-130 and applies if not otherwise shown in the drawing. Silicone moulding general tolerances according to ISO 3302-1 Class M3 and applies if not otherwise shown in the drawing.

FIRST ANGLE PROJECTION:



This drawing is the property of LEDiL Oy. It may not be copied or otherwise distributed without prior written permission from LEDiL Oy.

SCALE	1:1	WEIGHT	-	A3	SHEET 1/1
-------	-----	--------	---	----	-----------

Notes

	PCB or heatsink level.
	LED location
	Ensure LED fitting from a product specific 3D model available from www.ledil.com
	For more details about installation please see LEDiL Installation Guide on www.ledil.com