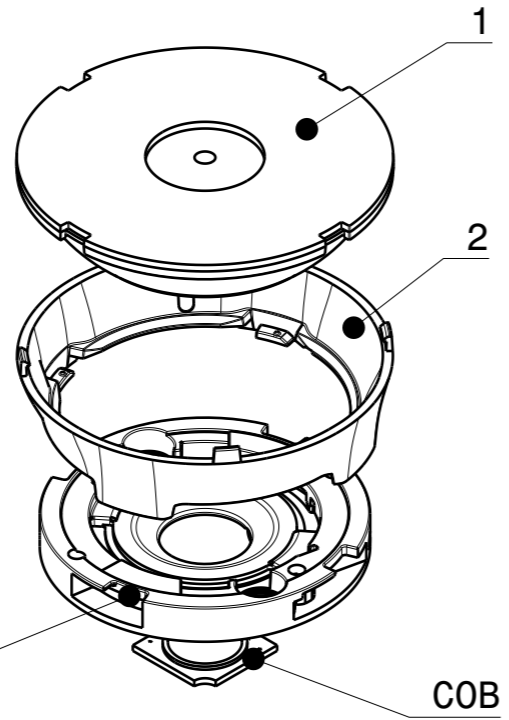
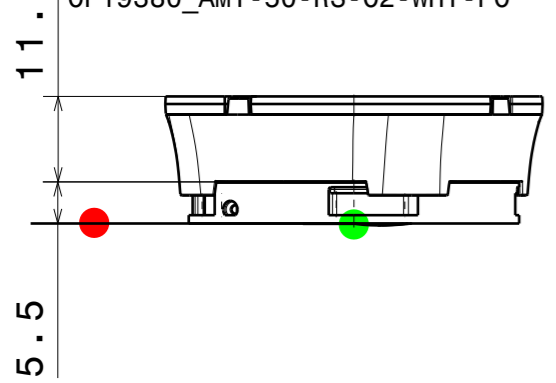
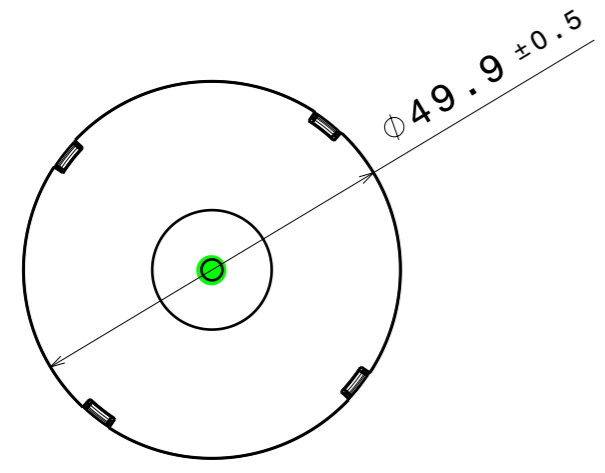
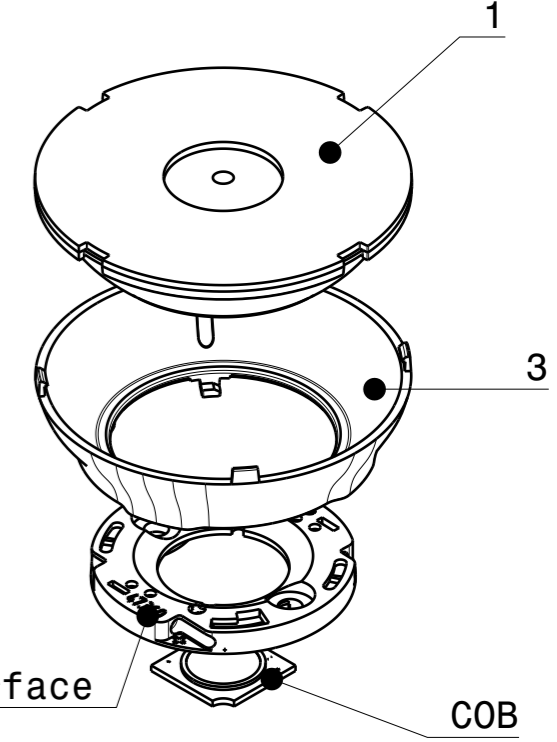
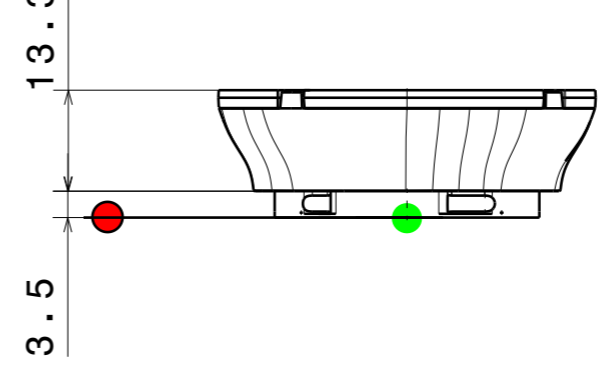


DATE
09.08.2023

CP19131_ AMY-50-RS-C2
 CP19149_ AMY-50-RS-C2-WHT
 CP18856_ AMY-50-RS-C2-PC
 CP19380_ AMY-50-RS-C2-WHT-PC



CP19140_ AMY-50-RS-B2
 CP19160_ AMY-50-RS-B2-WHT
 CP18863_ AMY-50-RS-B2-PC
 CP19388_ AMY-50-RS-B2-WHT-PC



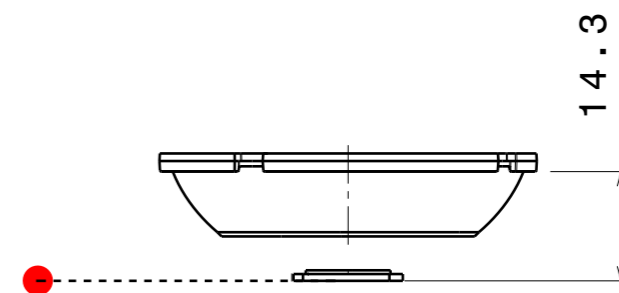
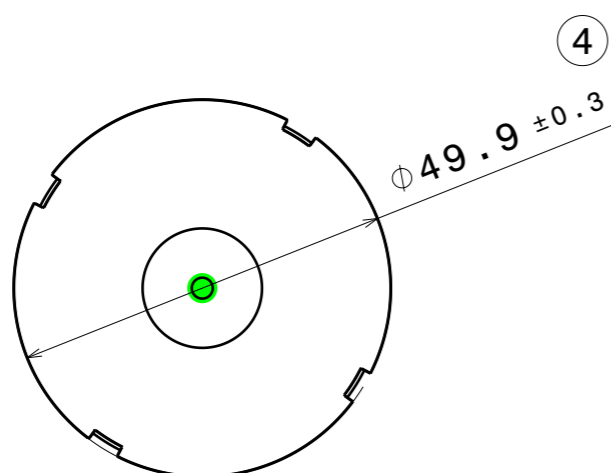
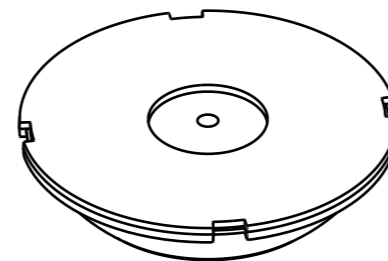
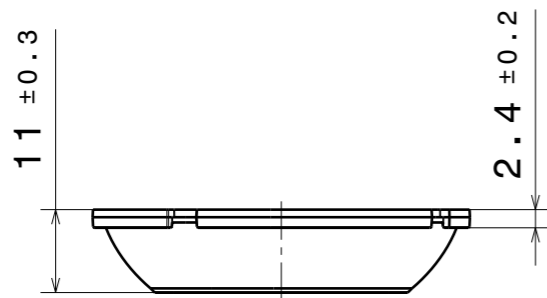
Top view
Scale: 1:1

INDEX	PART	TYPE	QTY	MATERIAL	COLOUR/COATING	ASSEMBLY CODES
1	AMY-50-RS	LENS	1			
	C18515_ AMY-50-RS			PMMA	CLEAR	
	C18849_ AMY-50-RS-PC			PC	CLEAR	
2	HOLDER C	HOLDER	1			
	C19017_ AMY-50-HLD2-C			PC	BLACK	CP19131_ AMY-50-RS-C2 CP18856_ AMY-50-RS-C2-PC
	C19019_ AMY-50-HLD2-C-WHT			PC	WHITE	CP19149_ AMY-50-RS-C2-WHT CP19380_ AMY-50-RS-C2-WHT-PC
3	HOLDER B					
	C19018_ AMY-50-HLD2-B			PC	BLACK	CP19140_ AMY-50-RS-B2 CP18863_ AMY-50-RS-B2-PC
	C19020_ AMY-50-HLD2-B-WHT			PC	WHITE	CP19160_ AMY-50-RS-B2-WHT CP19388_ AMY-50-RS-B2-WHT-PC

MECHANICAL DRAWING		LEDiL
PRODUCT AMY-50-RS		
Plastic moulding general tolerances according to DIN 16901-130 and applies if not otherwise shown in the drawing. Silicone moulding general tolerances according to ISO 3302-1 Class M3 and applies if not otherwise shown in the drawing.	FIRST ANGLE PROJECTION: 	This drawing is the property of LEDiL Oy. It may not be copied or otherwise distributed without prior written permission from LEDiL Oy.
SCALE 1:1	WEIGHT -	A3 SHEET 1/2

Notes

- PCB or heatsink level.
- LED location
- Ensure LED fitting from a product specific 3D model available from www.ledil.com
- For more details about installation please see LEDiL Installation Guide on www.ledil.com



PART	TYPE	MATERIAL	COLOR / COATING
C18515_AMY-50-RS	LENS	PMMA	CLEAR
C18849_AMY-50-RS-PC	LENS	PC	CLEAR

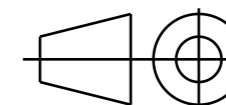
MECHANICAL DRAWING

PRODUCT
AMY-50-RS

LEDiL

Plastic moulding general tolerances according to DIN 16901-130 and applies if not otherwise shown in the drawing. Silicone moulding general tolerances according to ISO 3302-1 Class M3 and applies if not otherwise shown in the drawing.

FIRST ANGLE PROJECTION:



This drawing is the property of LEDiL Oy. It may not be copied or otherwise distributed without prior written permission from LEDiL Oy.

SCALE 1:1

WEIGHT -

A3 SHEET 2/2

Notes

	PCB or heatsink level.
	LED location
	Ensure LED fitting from a product specific 3D model available from www.ledil.com
	For more details about installation please see LEDiL Installation Guide on www.ledil.com