

DAISY-7X1-WAS

Asymmetric beam for wall-washing

SPECIFICATION:

Dimensions	279.4 x 40.0
Height	27 mm
Fastening	clips
ROHS compliant	yes ⓘ

MATERIALS:

Component	Type	Material	Colour	Finish	Length (mm)
C17391_DAISY-7X1-WAS	Linear lens	PMMA	clear		
C17727_DAISY-7X1-WAS-COVER-WHT	Accessory	PC	white		
C17393_DAISY-7X1-WAS-COVER	Accessory	PC	black	matt	
C18281_DAISY-7X1-WAS-SHD	Shade	PC	metal	gloss	

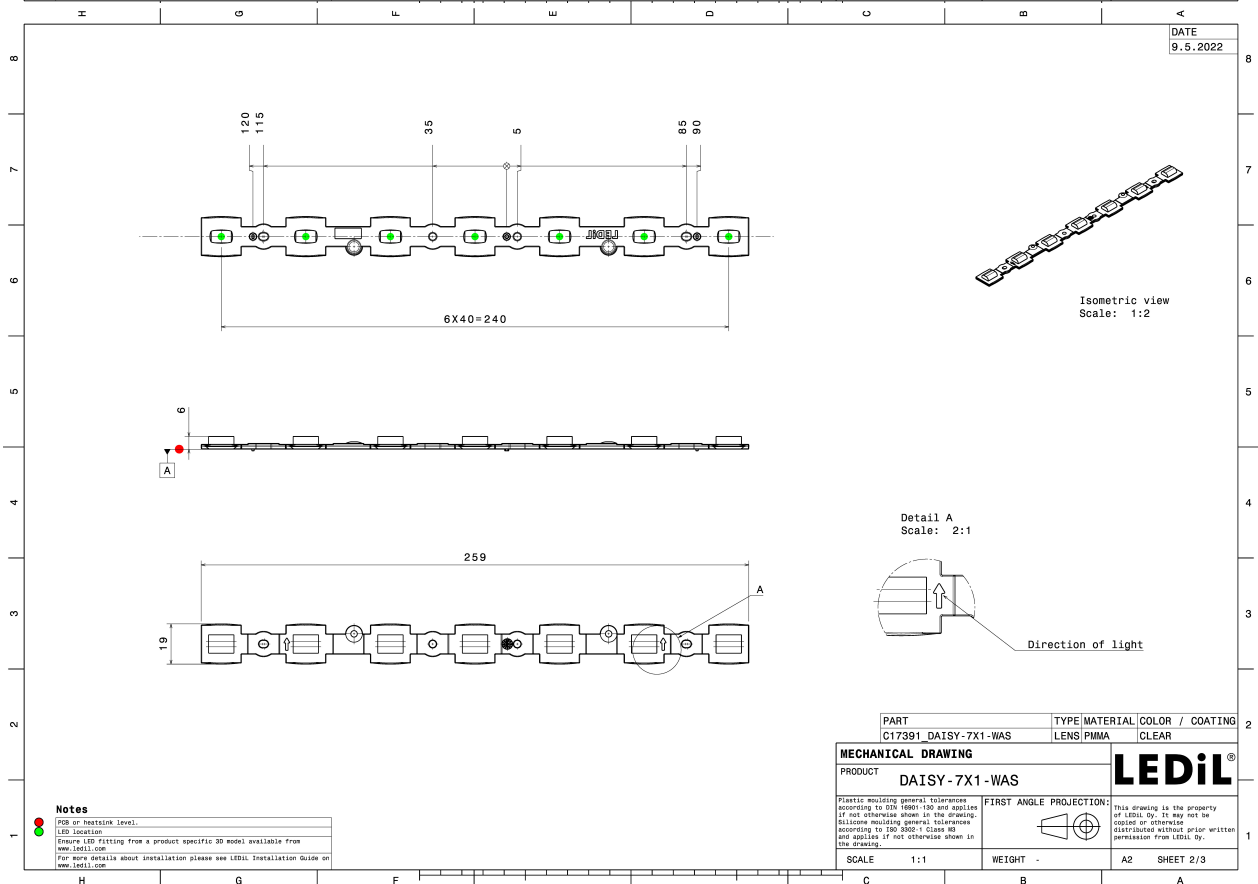
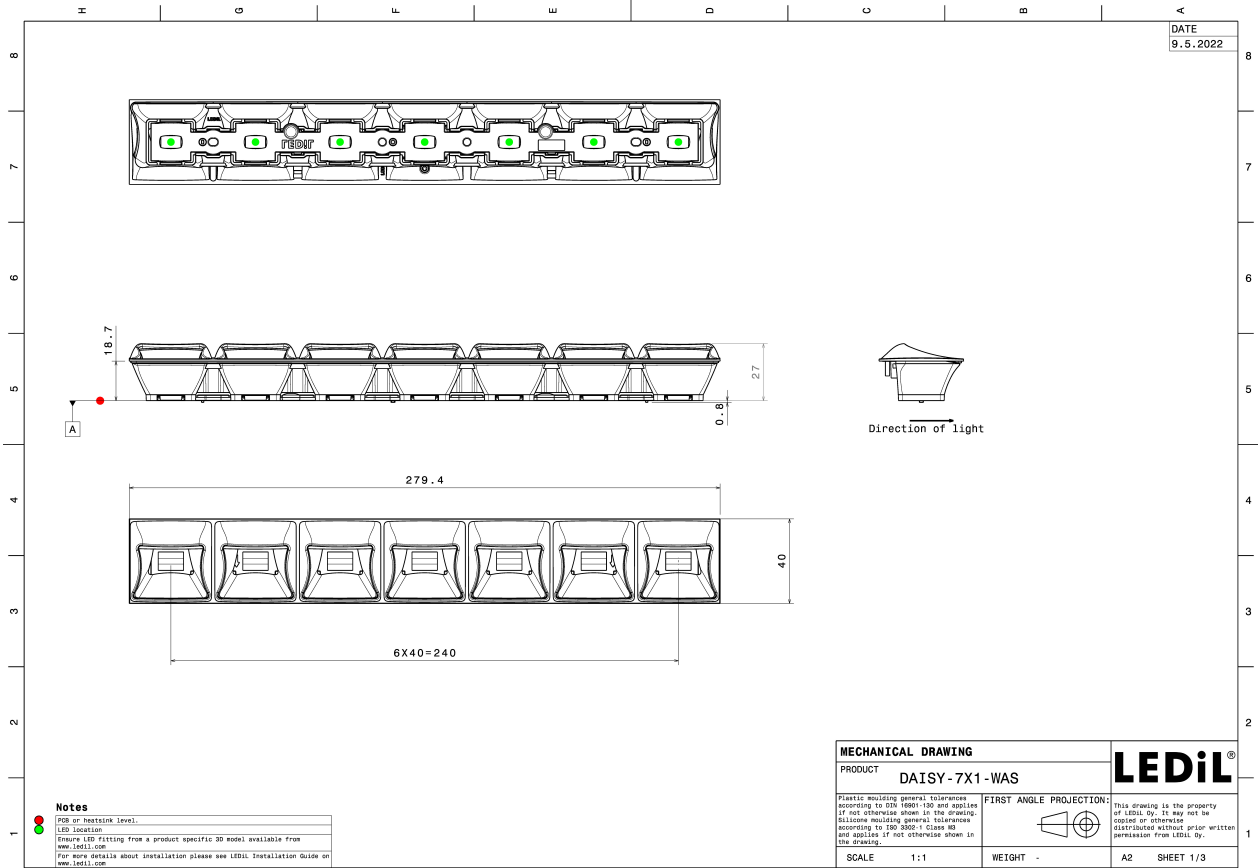
ORDERING INFORMATION:

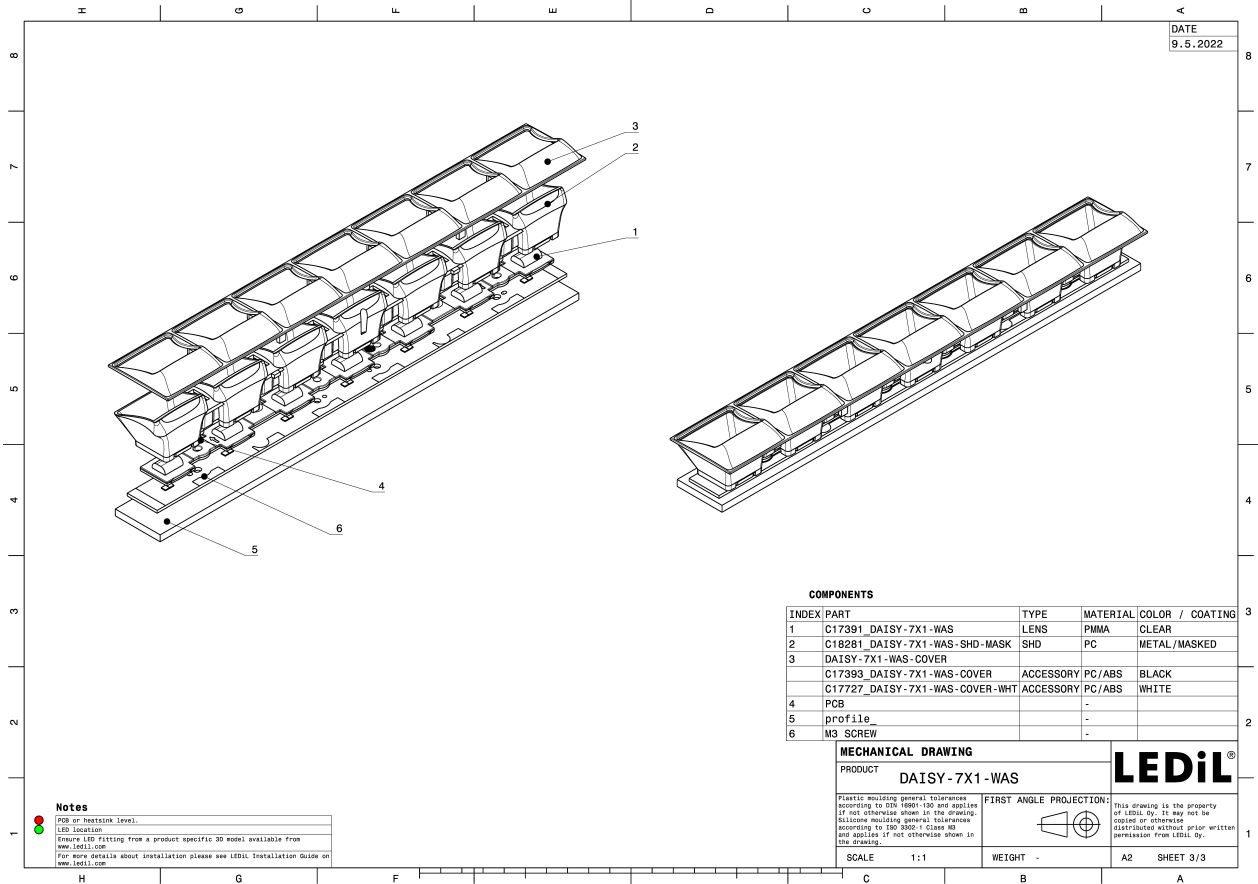
Quantities for one set:

Linear lens	1
Shade	1
Accessory	1



Component		Qty in box	MOQ	MPQ	Box weight (kg)
C17391_DAISY-7X1-WAS » Box size: 400 x 300 x 300 mm	Linear lens	312	312	156	5.4
C18281_DAISY-7X1-WAS-SHD » Box size: 595 x 360 x 250 mm	Shade	156	312	156	8.4
C17393_DAISY-7X1-WAS-COVER » Box size: 595 x 360 x 230 mm	Accessory	156	312	156	4.9
C17727_DAISY-7X1-WAS-COVER-WHT » Box size: 595 x 360 x 230 mm	Accessory	156	312	156	5.1



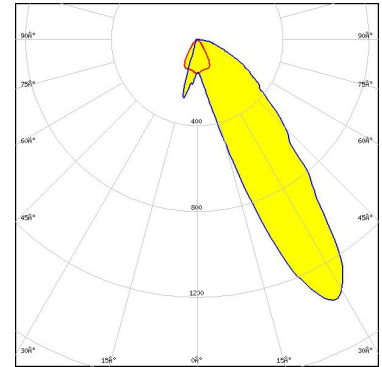


See also our general installation guide: www.ledil.com/installation_guide

OPTICAL RESULTS (MEASURED):



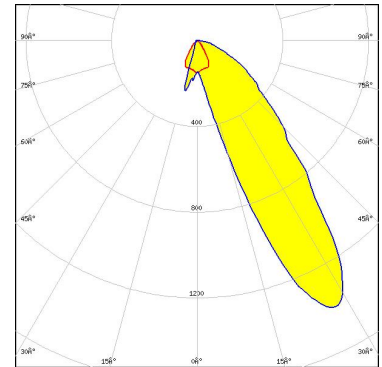
LED LED Line SMD L28W2 TW Module 20mm 2800Lm Daisy 7x1 (E21A)
FWHM / FWTM Asymmetric
Efficiency 74 %
Peak intensity 1.4 cd/lm
LEDs/each optic 2
Light colour/type Tunable White
Required components:
 C17393_DAISY-7X1-WAS-COVER



Light distribution files



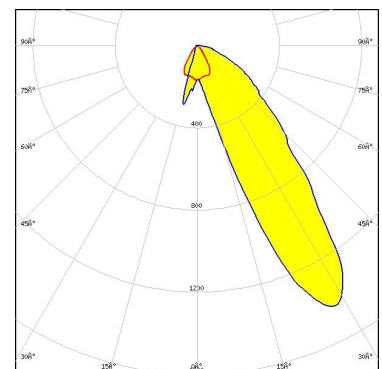
LED LED Line SMD L28W2 White Module 20mm 2800Lm Daisy 7x1 (E21A)
FWHM / FWTM Asymmetric
Efficiency 74 %
Peak intensity 1.4 cd/lm
LEDs/each optic 2
Light colour/type White
Required components:
 C17393_DAISY-7X1-WAS-COVER



Light distribution files



LED LUXEON HL2Z
FWHM / FWTM Asymmetric
Efficiency 76 %
Peak intensity 1.4 cd/lm
LEDs/each optic 2
Light colour/type White
Required components:
 C17393_DAISY-7X1-WAS-COVER

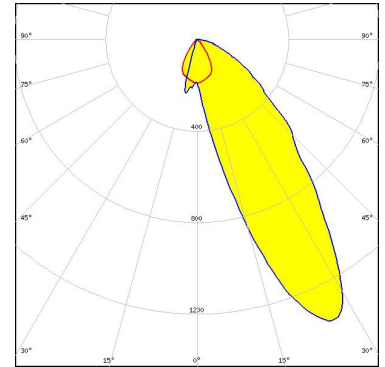


Light distribution files

OPTICAL RESULTS (MEASURED):

MST | *Your solutions*

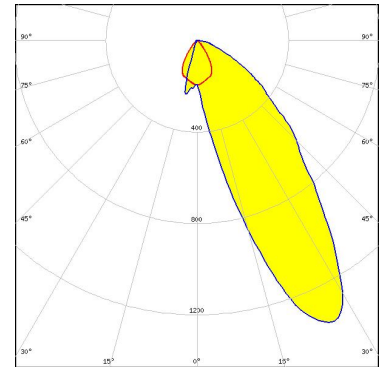
LED LinLED 274x24mm 1100lm 840 4C 42V DAISY-7X1 (ZT25) G4
FWHM / FWTM Asymmetric
Efficiency 79 %
Peak intensity 1.4 cd/lm
LEDs/each optic 1
Light colour/type White
Required components:
C17393_DAISY-7X1-WAS-COVER



Light distribution files

MST | *Your solutions*

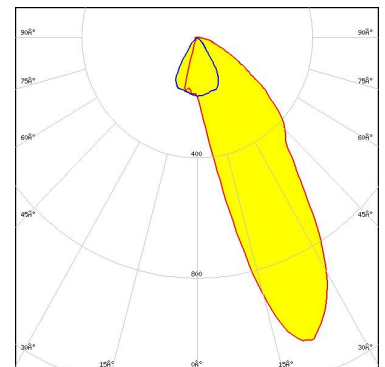
LED LinLED 274x24mm 1100lm 840 4C 42V DAISY-7X1 (ZT25) G4
FWHM / FWTM Asymmetric
Efficiency 80 %
Peak intensity 1.4 cd/lm
LEDs/each optic 1
Light colour/type White
Required components:
C17727_DAISY-7X1-WAS-COVER-WHT



Light distribution files

MST | *Your solutions*

LED LinLED 280x28mm 1600lm 840 4C 21V DAISY 7x1(ZT25)
FWHM / FWTM Asymmetric
Efficiency 78 %
Peak intensity 1.1 cd/lm
LEDs/each optic 1
Light colour/type White
Required components:
C17393_DAISY-7X1-WAS-COVER

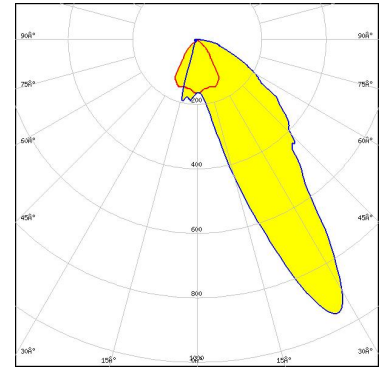


Light distribution files

OPTICAL RESULTS (MEASURED):



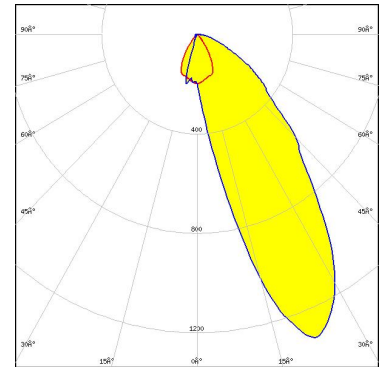
LED NCSxE17A
FWHM / FWTM Asymmetric
Efficiency 74 %
Peak intensity 1.2 cd/lm
LEDs/each optic 1
Light colour/type White
Required components:
C17393_DAISSY-7X1-WAS-COVER



Light distribution files



LED LH231B
FWHM / FWTM Asymmetric
Efficiency 79 %
Peak intensity 1.3 cd/lm
LEDs/each optic 1
Light colour/type White
Required components:
C17393_DAISSY-7X1-WAS-COVER

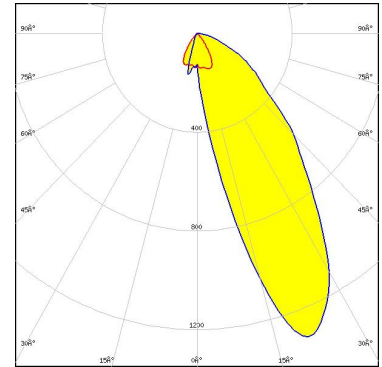


Light distribution files

OPTICAL RESULTS (SIMULATED):



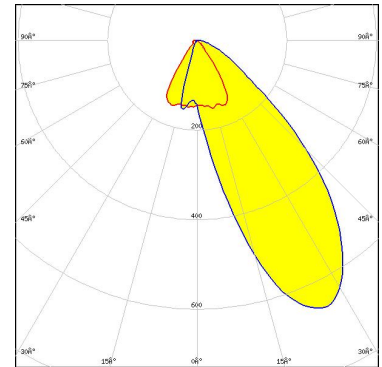
LED CSP 2727 (BXCP)
 FWHM / FWTM Asymmetric
 Efficiency 75 %
 Peak intensity 1.3 cd/lm
 LEDs/each optic 2
 Light colour/type White
 Required components:
 C17393_DAISSY-7X1-WAS-COVER



Light distribution files



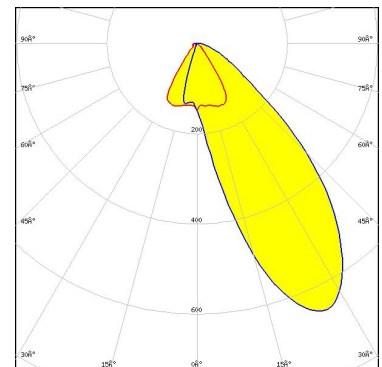
LED J Series 2835
 Ordering code C18003_CLAUDIA-60-D
 FWHM / FWTM Asymmetric
 Efficiency 55 %
 Peak intensity 0.7 cd/lm
 LEDs/each optic 1
 Light colour/type White
 Required components:
 C17727_DAISSY-7X1-WAS-COVER-WHT



Light distribution files



LED J Series 2835
 FWHM / FWTM Asymmetric
 Efficiency 54 %
 Peak intensity 0.7 cd/lm
 LEDs/each optic 1
 Light colour/type White
 Required components:
 C17393_DAISSY-7X1-WAS-COVER

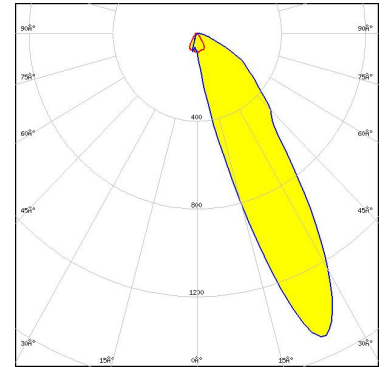


Light distribution files

OPTICAL RESULTS (SIMULATED):



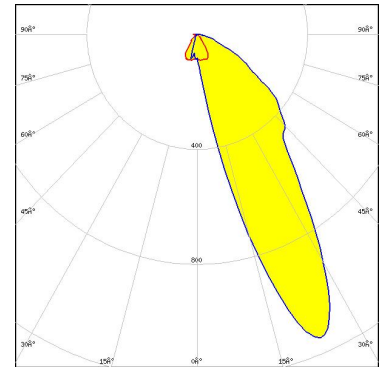
LED NCSxE17A
FWHM / FWTM Asymmetric
Efficiency 73 %
Peak intensity 1.5 cd/lm
LEDs/each optic 2
Light colour/type White
Required components:
C17727_DAISSY-7X1-WAS-COVER-WHT



Light distribution files



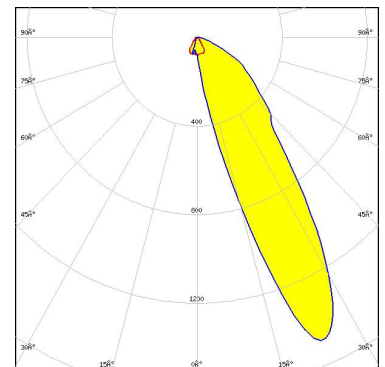
LED NCSxE17A
FWHM / FWTM Asymmetric
Efficiency 70 %
Peak intensity 1.2 cd/lm
LEDs/each optic 1
Light colour/type White
Required components:
C17727_DAISSY-7X1-WAS-COVER-WHT



Light distribution files



LED NCSxE17A
FWHM / FWTM Asymmetric
Efficiency 73 %
Peak intensity 1.5 cd/lm
LEDs/each optic 2
Light colour/type White
Required components:
C17393_DAISSY-7X1-WAS-COVER

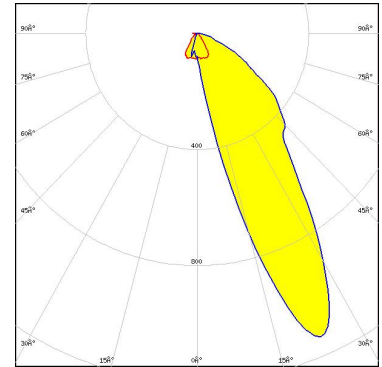


Light distribution files

OPTICAL RESULTS (SIMULATED):



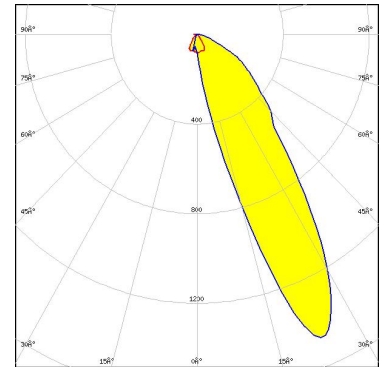
LED NCSxE17A
FWHM / FWTM Asymmetric
Efficiency 69 %
Peak intensity 1.2 cd/lm
LEDs/each optic 1
Light colour/type White
Required components:
 C17393_DAISSY-7X1-WAS-COVER



Light distribution files



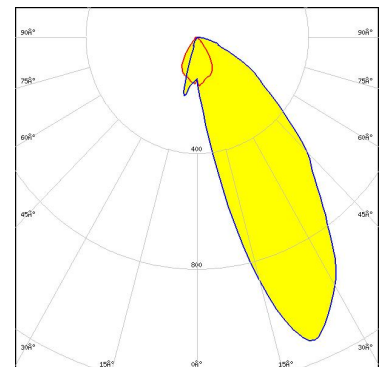
LED NCSxE17A
FWHM / FWTM Asymmetric
Efficiency 71 %
Peak intensity 1.5 cd/lm
LEDs/each optic 2
Light colour/type White
Required components:
 C17393_DAISSY-7X1-WAS-COVER



Light distribution files



LED NF2W757G-MT (Tunable White)
FWHM / FWTM Asymmetric
Efficiency 73 %
Peak intensity 1.1 cd/lm
LEDs/each optic 2
Light colour/type Tunable White
Required components:
 C17727_DAISSY-7X1-WAS-COVER-WHT

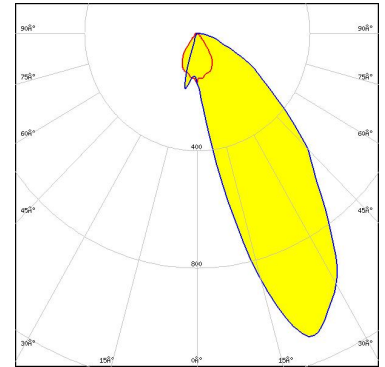


Light distribution files

OPTICAL RESULTS (SIMULATED):



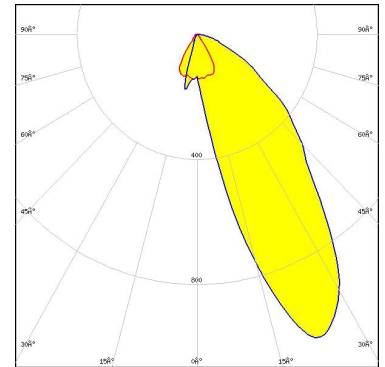
LED NF2W757G-MT (Tunable White)
FWHM / FWTM Asymmetric
Efficiency 72 %
Peak intensity 1.1 cd/lm
LEDs/each optic 2
Light colour/type Tunable White
Required components:
C17393_DAISSY-7X1-WAS-COVER



Light distribution files



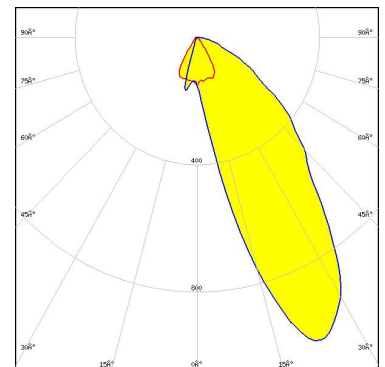
LED NF2x757G
FWHM / FWTM Asymmetric
Efficiency 73 %
Peak intensity 1.1 cd/lm
LEDs/each optic 1
Light colour/type White
Required components:
C17727_DAISSY-7X1-WAS-COVER-WHT



Light distribution files



LED NF2x757G
FWHM / FWTM Asymmetric
Efficiency 73 %
Peak intensity 1.1 cd/lm
LEDs/each optic 1
Light colour/type White
Required components:
C17393_DAISSY-7X1-WAS-COVER

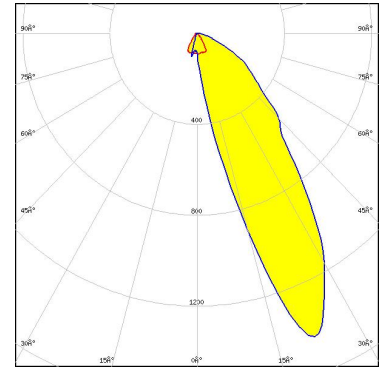


Light distribution files

OPTICAL RESULTS (SIMULATED):



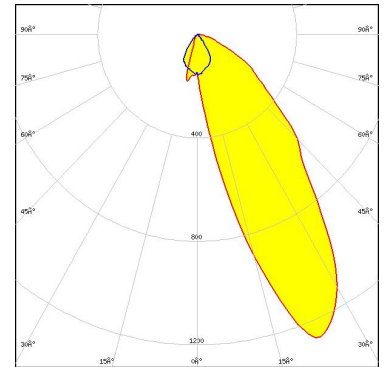
LED NVSxE21A
FWHM / FWTM Asymmetric
Efficiency 72 %
Peak intensity 1.4 cd/lm
LEDs/each optic 2
Light colour/type White
Required components:
C17393_DAISSY-7X1-WAS-COVER



Light distribution files



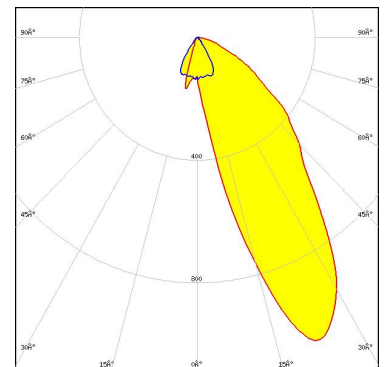
LED LM28xB Series
FWHM / FWTM Asymmetric
Efficiency 74 %
Peak intensity 1.3 cd/lm
LEDs/each optic 2
Light colour/type White
Required components:
C17393_DAISSY-7X1-WAS-COVER



Light distribution files



LED LM28xB Series
FWHM / FWTM Asymmetric
Efficiency 73 %
Peak intensity 1.1 cd/lm
LEDs/each optic 1
Light colour/type White
Required components:
C17393_DAISSY-7X1-WAS-COVER

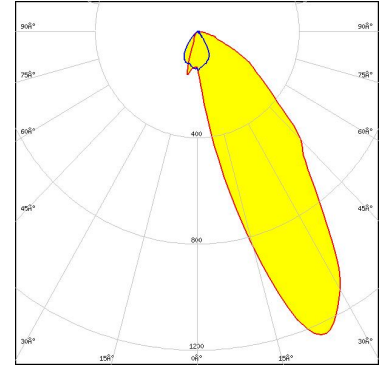


Light distribution files

OPTICAL RESULTS (SIMULATED):

SAMSUNG

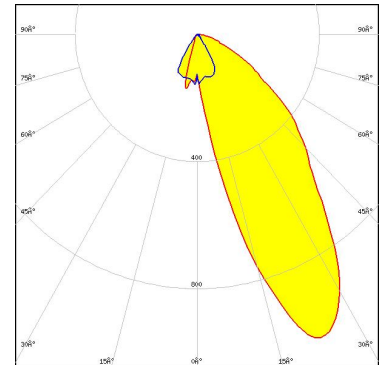
LED LM301B
FWHM / FWTM Asymmetric
Efficiency 73 %
Peak intensity 1.2 cd/lm
LEDs/each optic 1
Light colour/type White
Required components:
C17393_DAISSY-7X1-WAS-COVER



Light distribution files

SAMSUNG

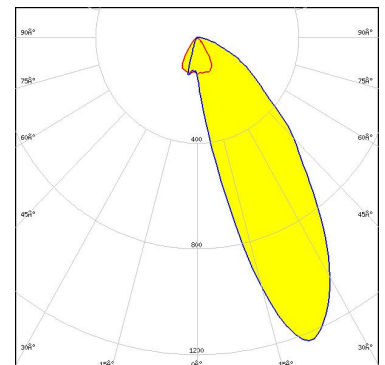
LED LM301B
FWHM / FWTM Asymmetric
Efficiency 74 %
Peak intensity 1.1 cd/lm
LEDs/each optic 1
Light colour/type White
Required components:
C17393_DAISSY-7X1-WAS-COVER



Light distribution files



LED Z8Y22
FWHM / FWTM Asymmetric
Efficiency 71 %
Peak intensity 1.2 cd/lm
LEDs/each optic 2
Light colour/type White
Required components:
C17393_DAISSY-7X1-WAS-COVER



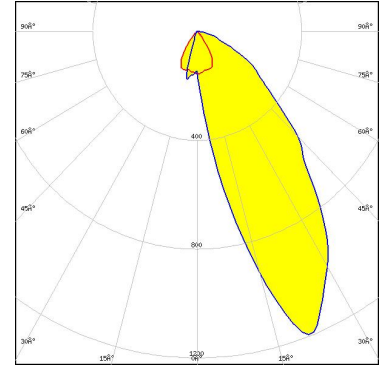
Light distribution files

OPTICAL RESULTS (SIMULATED):

TRIDONIC

LED	LLE 24mm 2000lm LVD HP ADV2
FWHM / FWTM	Asymmetric
Efficiency	71 %
Peak intensity	1.2 cd/lm
LEDs/each optic	2
Light colour/type	White
Required components:	
	C17393_DAISSY-7X1-WAS-COVER

Light distribution files



GENERAL INFORMATION:

NOTE: The typical beam angle will be changed by different color, chip size and chip position tolerance. The typical total beam angle is the full angle measured where the luminous intensity is half of the peak value.

MATERIALS:

As part of our continuous research and improvement processes, and to ensure the best possible quality and availability of our products, LEDiL reserves the right to change material grades without notice.

PRODUCT DATA USER AGREEMENT AND DISCLAIMER:

The measured data in the provided downloadable LEDiL Product Datasheets and Mechanical 2D-Drawings is rounded and provided as reference for planning. LEDiL Oy's optical specifications have been verified by conducting performance testing of the products in accordance with the company's quality system. The reported data are averaged results of multiple measurements with typical variation. LEDiL Oy reserves the right to without prior notification make changes and improvements to its products.

LEDiL Oy assumes neither warranty, nor guarantee nor any other liability of any kind for the contents and correctness of the provided data. The provided data has been generated with highest diligence but the provided data may in reality not represent the complete possible variation range of all intrinsic parameters. Therefore, in certain cases a deviation from the provided data could occur.

LEDiL Oy reserves the right to undertake technical changes of its products without further notification which could lead to changes in the provided data. LEDiL Oy assumes no liability of any kind for the possible deviation from any provided data or any other damage resulting from the usage of the provided data.

The user agrees to this disclaimer and user agreement with the download or usage of the provided files.

LEDiL Oy

Joensuunkatu 7
FI-24100 SALO
Finland

LEDiL Inc.

228 West Page Street
Suite D
Sycamore IL 60178
USA

Ledil Optics Technology (Shenzhen) Co., Ltd.

405 , Block B
Casic Motor Building
Shenzhen 518057
P.R.CHINA

Local sales and technical support

[www.ledil.com/
where_to_buy](http://www.ledil.com/where_to_buy)

Shipping locations

Poznan, Poland
Hong Kong, China

Distribution Partners

[www.ledil.com/
where_to_buy](http://www.ledil.com/where_to_buy)