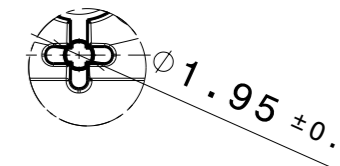
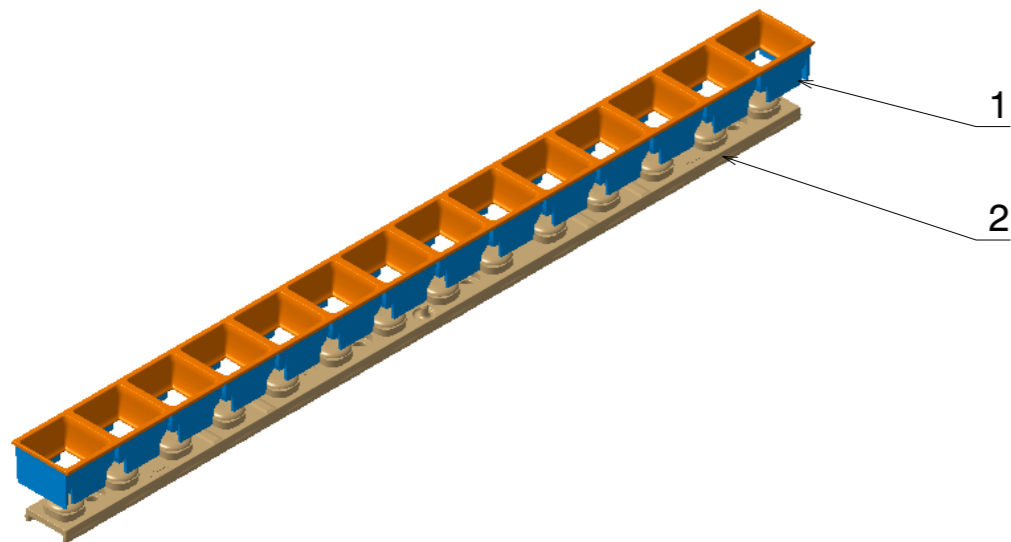
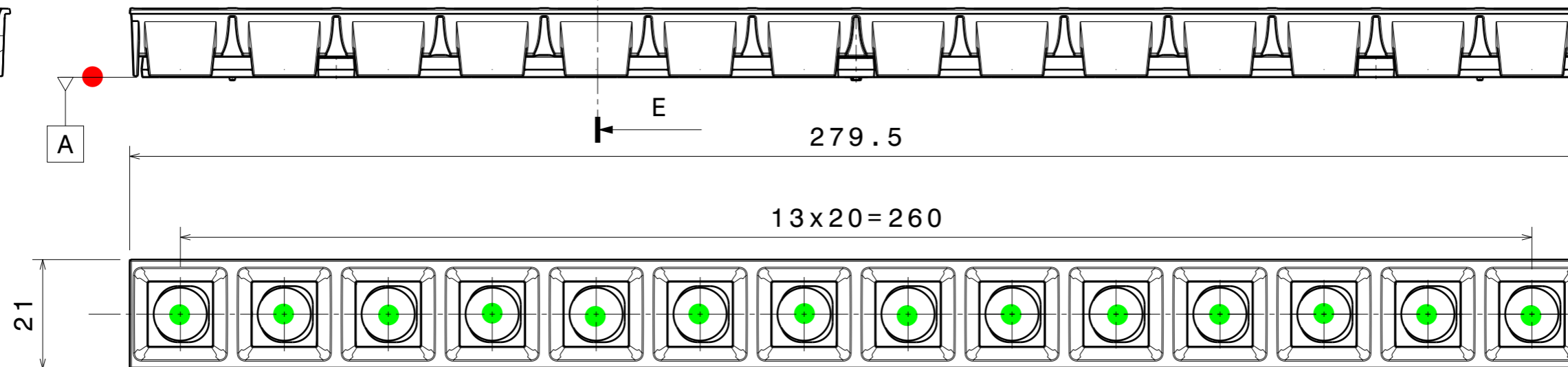
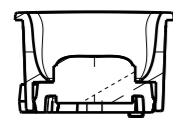


Detail G  
Scale: 2:1



Detail F  
Scale: 2:1

Section view E-E  
Scale: 1:1



FN18251\_DAISSY-MINI-FT-D  
**COMPONENTS**

INDEX	PART	TYPE	MATERIAL	COLOR / COATING
1	DAISSY-MINI-SHD	SHD	PC	
	F17028_DAISSY-MINI-SHD			BLACK
	F17033_DAISSY-MINI-SHD-WHT			WHITE
	F17034DAISSY-MINI-SHD-MATT			BLACK, MATT
	F17465_DAISSY-MINI-SHD-WHT-MATT			WHITE, MATT
	F17666_DAISSY-MINI-SHD-MET			METALLIZED, GLOSSY
	F17667_DAISSY-MINI-SHD-MET-MATT			METALLIZED, MATT
2	F18248_DAISSY-MINI-FT-D	LENS	PMMA	DIFFUSIVE (DF21)

MECHANICAL DRAWING	
PRODUCT	DAISSY-MINI
Plastic moulding general tolerances according to DIN 16901-130 and applies if not otherwise shown in the drawing. Silicone moulding general tolerances according to ISO 3302-1 Class M3 and applies if not otherwise shown in the drawing.	FIRST ANGLE PROJECTION: 
SCALE 1:1	WEIGHT -

**LEDiL**

This drawing is the property of LEDiL Oy. It may not be copied or otherwise distributed without prior written permission from LEDiL Oy.

A3 SHEET 1/1

**Notes**

	PCB or heatsink level.
	LED location
	Ensure LED fitting from a product specific 3D model available from <a href="http://www.ledil.com">www.ledil.com</a>
	For more details about installation please see LEDiL Installation Guide on <a href="http://www.ledil.com">www.ledil.com</a>