

## FLORENCE-Z90-B

~90° wide beam with added compatibility for Philips G4 LED modules

### SPECIFICATION:

|                |              |
|----------------|--------------|
| Dimensions     | 61.0 x 286.0 |
| Height         | 8.5 mm       |
| Fastening      | screw        |
| ROHS compliant | yes ⓘ        |

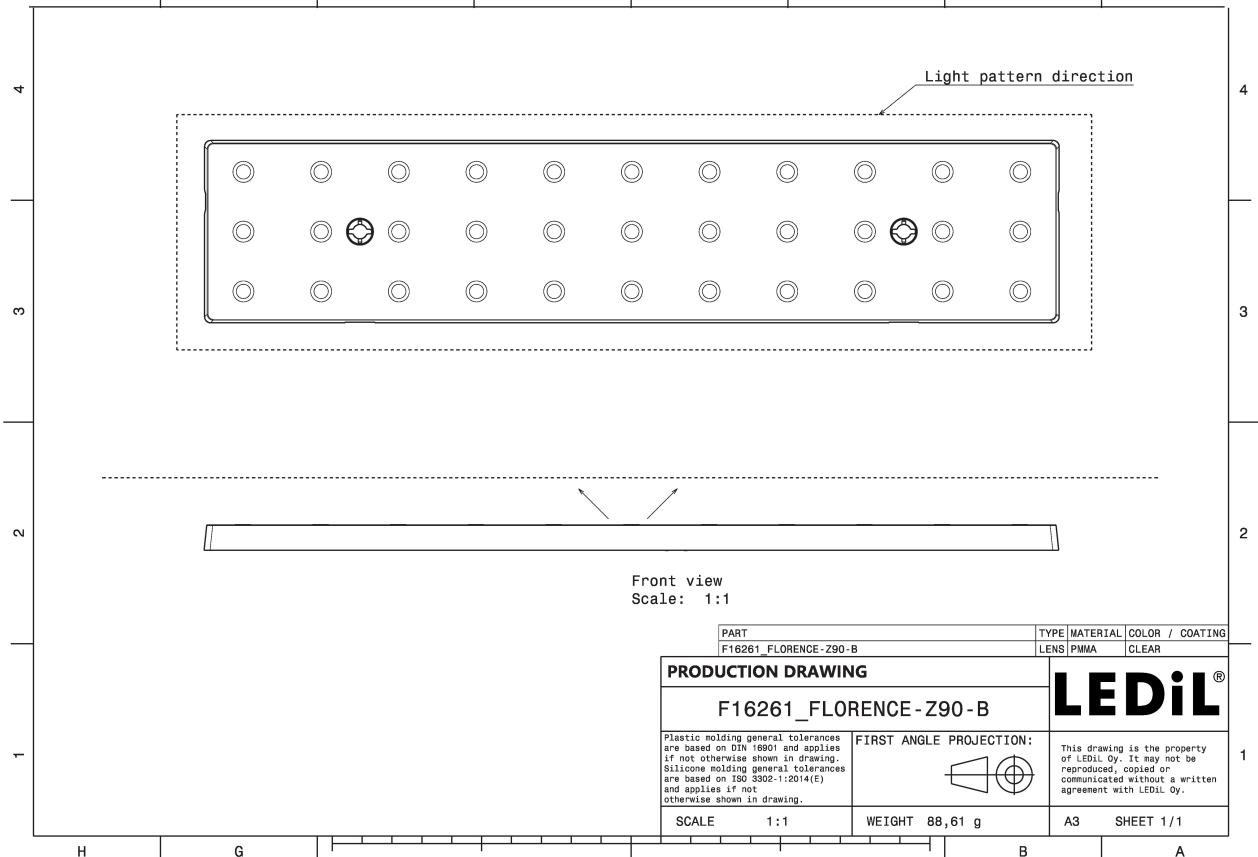
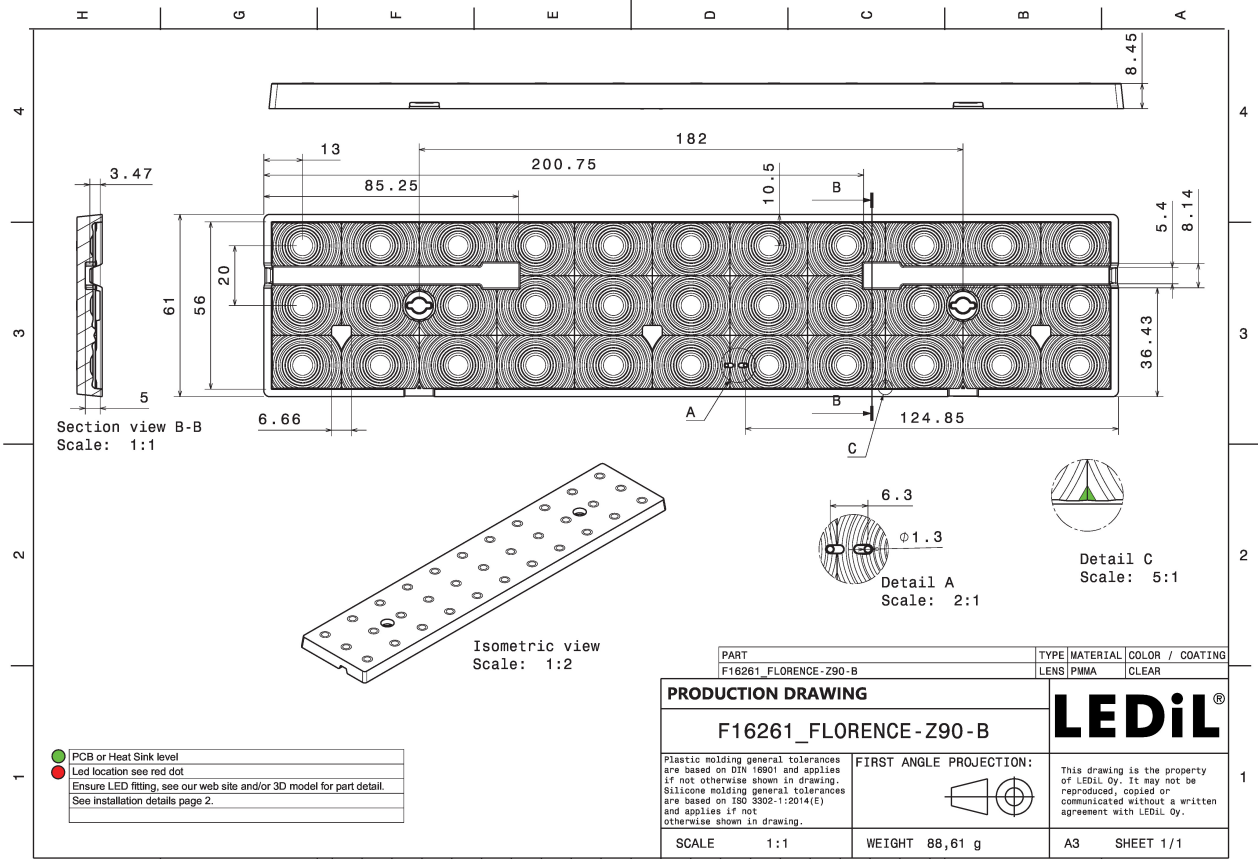


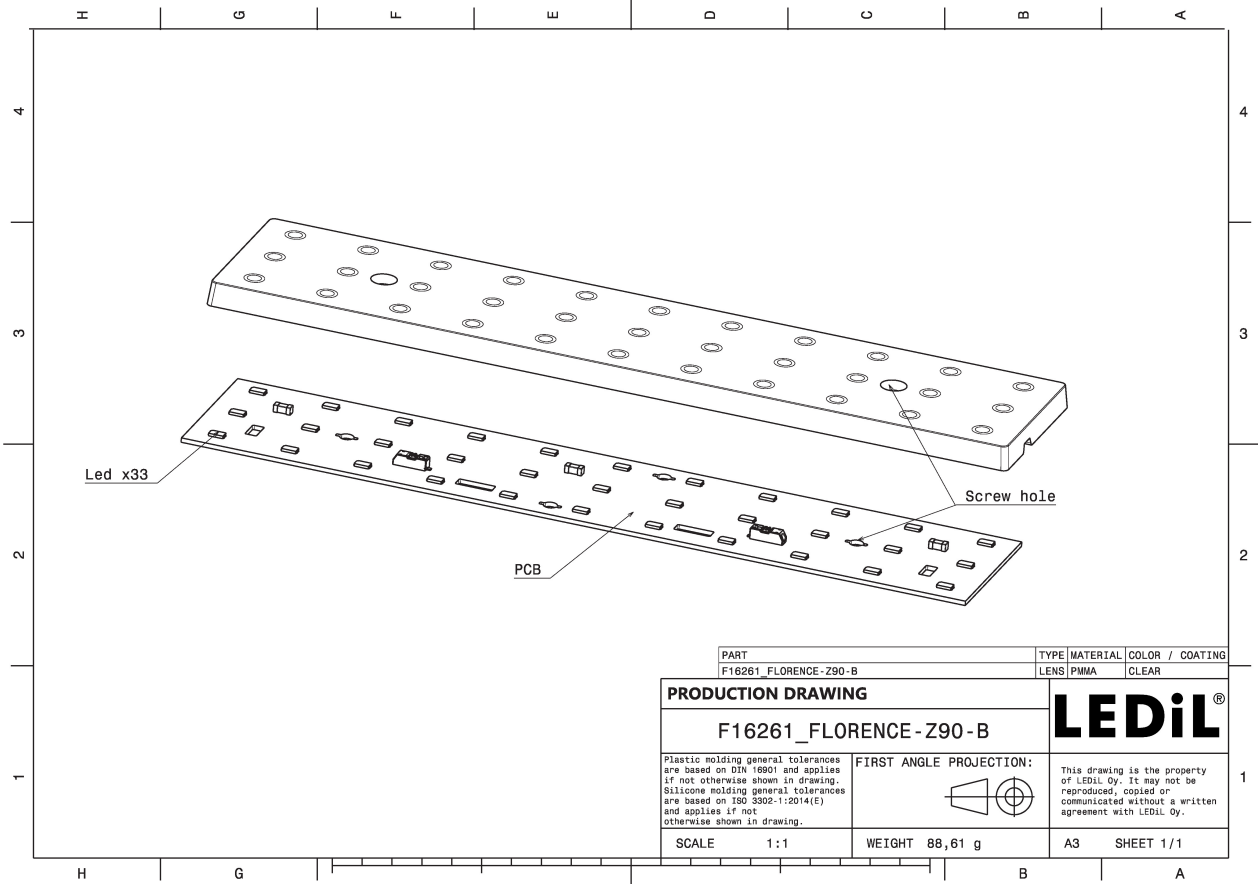
### MATERIALS:

| Component      | Type        | Material | Colour | Finish | Length (mm) |
|----------------|-------------|----------|--------|--------|-------------|
| FLORENCE-Z90-B | Linear lens | PMMA     | clear  |        |             |

### ORDERING INFORMATION:

| Component   | Qty in box | MOQ | MPQ | Box weight (kg) |
|---|------------|-----|-----|-----------------|
| F16261_FLORENCE-Z90-B<br>» Box size: 398 x 298 x 140 mm | 72         | 18  | 6   | 7.8             |





See also our general installation guide: [www.ledil.com/installation\\_guide](http://www.ledil.com/installation_guide)

#### OPTICAL RESULTS (MEASURED):



LED XH-B/G  
FWHM / FWTM 95.0° / 140.0°  
Efficiency 82 %  
Peak intensity 0.4 cd/lm  
LEDs/each optic 1  
Light colour/type White  
Required components:



LED LUXEON 3030 2D (Round LES)  
FWHM / FWTM 91.0° / 132.0°  
Efficiency 87 %  
Peak intensity 0.4 cd/lm  
LEDs/each optic 1  
Light colour/type White  
Required components:

[Light distribution files](#)



LED LUXEON 3535 2D  
FWHM / FWTM 92.0° / 135.0°  
Efficiency 87 %  
Peak intensity 0.4 cd/lm  
LEDs/each optic 1  
Light colour/type White  
Required components:

[Light distribution files](#)

#### OPTICAL RESULTS (MEASURED):



LED LUXEON 3535L HE  
FWHM / FWTM 92.0° / 139.0°  
Efficiency 93 %  
Peak intensity 0.4 cd/lm  
LEDs/each optic 1  
Light colour/type White  
Required components:

[Light distribution files](#)



LED LUXEON XR-3535L (L202 - xxxx033C30001)  
FWHM / FWTM 91.0° / 134.0°  
Efficiency 93 %  
Peak intensity 0.4 cd/lm  
LEDs/each optic 1  
Light colour/type White  
Required components:

[Light distribution files](#)



LED MP-2016  
FWHM / FWTM 90.0° / 140.0°  
Efficiency 91 %  
Peak intensity 0.4 cd/lm  
LEDs/each optic 1  
Light colour/type White  
Required components:

[Light distribution files](#)

#### OPTICAL RESULTS (MEASURED):



LED NF2x757D  
FWHM / FWTM 92.0° / 134.0°  
Efficiency 90 %  
Peak intensity 0.4 cd/lm  
LEDs/each optic 1  
Light colour/type White  
Required components:

[Light distribution files](#)



Opto Semiconductors

LED Duris E5  
FWHM / FWTM 92.0° / 135.0°  
Efficiency 88 %  
Peak intensity 0.4 cd/lm  
LEDs/each optic 1  
Light colour/type White  
Required components:

[Light distribution files](#)



Opto Semiconductors

LED Duris S2  
FWHM / FWTM 95.0° / 165.0°  
Efficiency 90 %  
Peak intensity 0.4 cd/lm  
LEDs/each optic 1  
Light colour/type White  
Required components:

[Light distribution files](#)

#### OPTICAL RESULTS (MEASURED):

**OSRAM**  
Opto Semiconductors

LED Duris S5 (Single chip)  
FWHM / FWTM 91.0° / 133.0°  
Efficiency 88 %  
Peak intensity 0.4 cd/lm  
LEDs/each optic 1  
Light colour/type White  
Required components:

Light distribution files

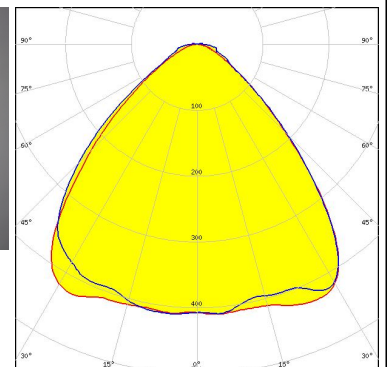
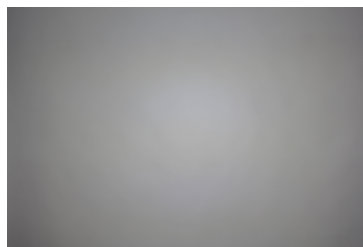
**OSRAM**  
Opto Semiconductors

LED OSCONIQ P 2226  
FWHM / FWTM 94.0° / 140.0°  
Efficiency 83 %  
Peak intensity 0.4 cd/lm  
LEDs/each optic 1  
Light colour/type White  
Required components:

Light distribution files

**PHILIPS**

LED Fortimo LED Line 1ft 1100lm 3R HV4  
FWHM / FWTM 91.0° / 127.0°  
Efficiency 94 %  
Peak intensity 0.4 cd/lm  
LEDs/each optic 1  
Light colour/type White  
Required components:

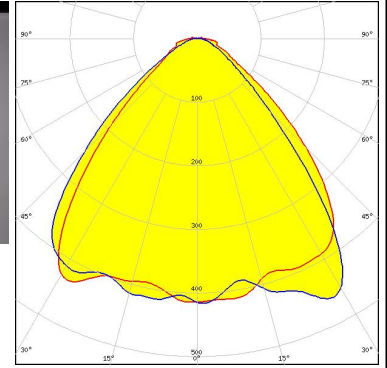


Light distribution files

#### OPTICAL RESULTS (MEASURED):

### PHILIPS

LED Fortimo LED Line 1ft 650lm 3R HV4 & LV4  
FWHM / FWTM 87.0° / 123.0°  
Efficiency 94 %  
Peak intensity 0.5 cd/lm  
LEDs/each optic 1  
Light colour/type White  
Required components:



Light distribution files

### SAMSUNG

LED LM231 A/B  
FWHM / FWTM 91.0° / 134.0°  
Efficiency 88 %  
Peak intensity 0.4 cd/lm  
LEDs/each optic 1  
Light colour/type White  
Required components:

### SAMSUNG

LED LM561B  
FWHM / FWTM 86.0° / 133.0°  
Efficiency 85 %  
Peak intensity 0.4 cd/lm  
LEDs/each optic 1  
Light colour/type White  
Required components:

Light distribution files



#### OPTICAL RESULTS (MEASURED):

### SAMSUNG

LED LM561B Plus  
FWHM / FWTM 92.0° / 141.0°  
Efficiency 93 %  
Peak intensity 0.4 cd/lm  
LEDs/each optic 1  
Light colour/type White  
Required components:

[Light distribution files](#)

### SAMSUNG

LED LM561C  
FWHM / FWTM 92.0° / 140.0°  
Efficiency 93 %  
Peak intensity 0.4 cd/lm  
LEDs/each optic 1  
Light colour/type White  
Required components:

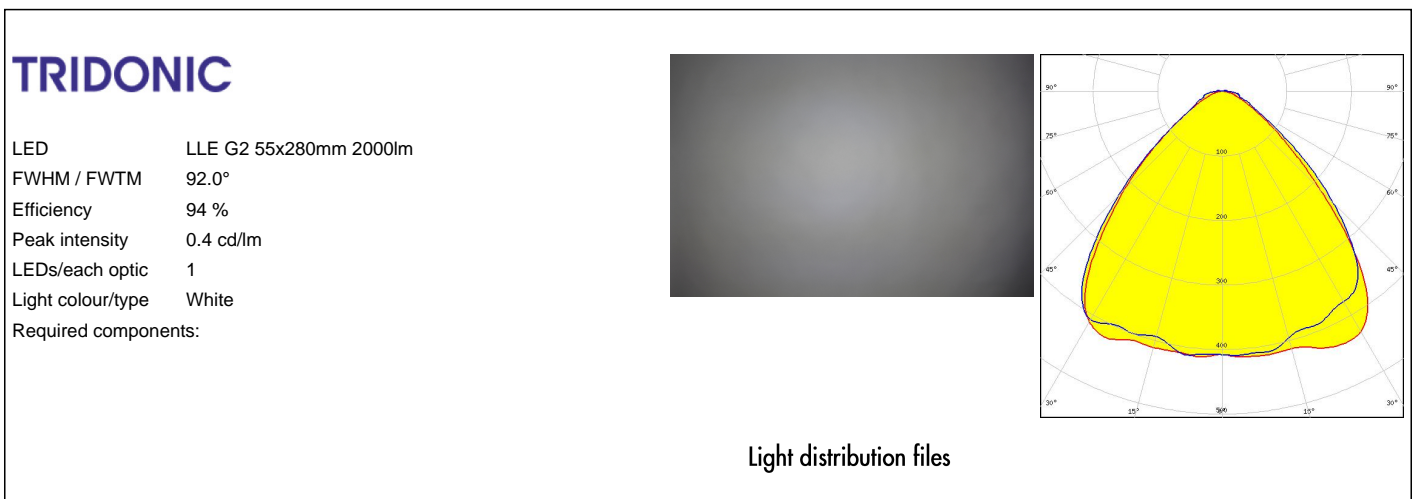
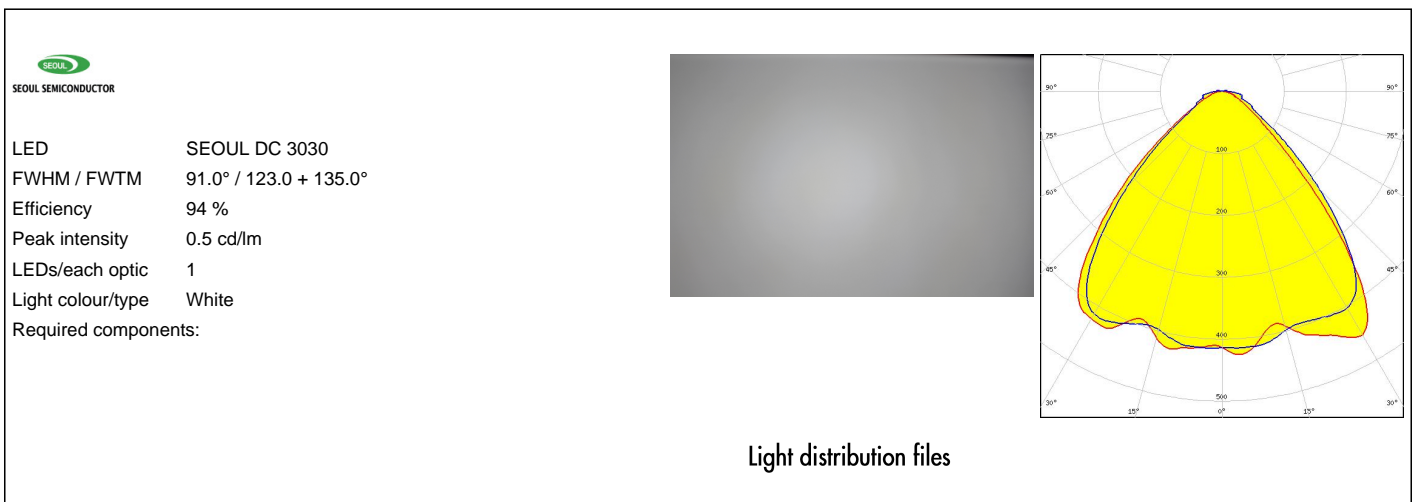
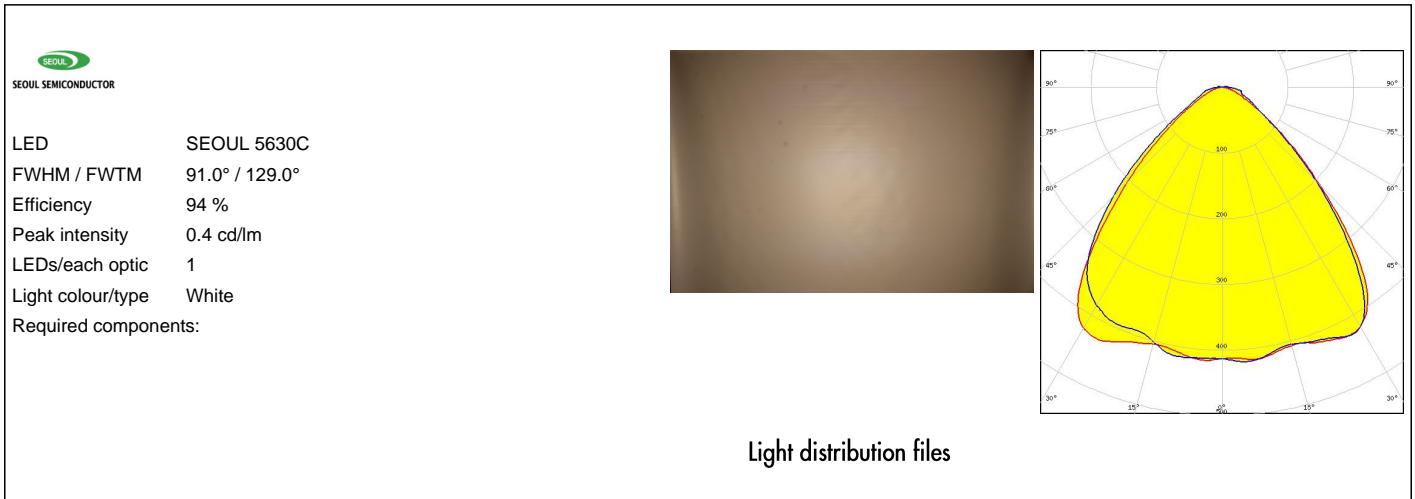
[Light distribution files](#)

### SAMSUNG

LED LT-R286A  
FWHM / FWTM 93.0° / 140.0°  
Efficiency 93 %  
Peak intensity 0.4 cd/lm  
LEDs/each optic 1  
Light colour/type White  
Required components:

[Light distribution files](#)

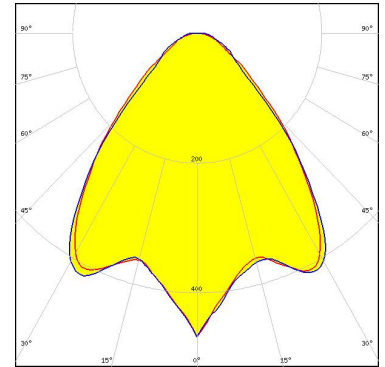
#### OPTICAL RESULTS (MEASURED):



#### OPTICAL RESULTS (SIMULATED):



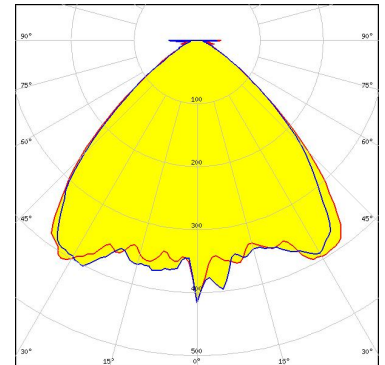
LED J Series 2835  
FWHM / FWTM 84.0° / 130.0°  
Efficiency 86 %  
Peak intensity 0.5 cd/lm  
LEDs/each optic 1  
Light colour/type White  
Required components:



Light distribution files



LED XP-G3  
FWHM / FWTM 95.0° / 126.0°  
Efficiency 92 %  
Peak intensity 0.4 cd/lm  
LEDs/each optic 1  
Light colour/type White  
Required components:



Light distribution files



LED NF2x757G  
FWHM / FWTM 90.0° / 146.0°  
Efficiency 80 %  
Peak intensity 0.4 cd/lm  
LEDs/each optic 1  
Light colour/type White  
Required components:

Light distribution files

#### OPTICAL RESULTS (SIMULATED):

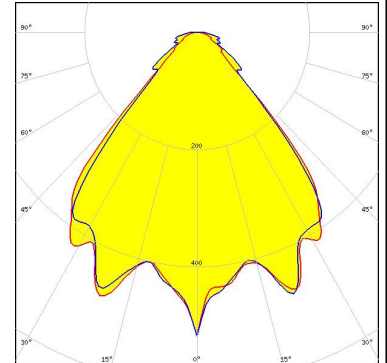


LED NVSxE21A  
FWHM / FWTM 90.0° / 163.0°  
Efficiency 94 %  
Peak intensity 0.4 cd/lm  
LEDs/each optic 1  
Light colour/type White  
Required components:

Light distribution files



LED SEOUL DC 3528  
FWHM / FWTM 82.0° / 114.0°  
Efficiency 87 %  
Peak intensity 0.5 cd/lm  
LEDs/each optic 1  
Light colour/type White  
Required components:



Light distribution files

### GENERAL INFORMATION:

NOTE: The typical beam angle will be changed by different color, chip size and chip position tolerance. The typical total beam angle is the full angle measured where the luminous intensity is half of the peak value.

### MATERIALS:

As part of our continuous research and improvement processes, and to ensure the best possible quality and availability of our products, LEDiL reserves the right to change material grades without notice.

### PRODUCT DATA USER AGREEMENT AND DISCLAIMER:

The measured data in the provided downloadable LEDiL Product Datasheets and Mechanical 2D-Drawings is rounded and provided as reference for planning. LEDiL Oy's optical specifications have been verified by conducting performance testing of the products in accordance with the company's quality system. The reported data are averaged results of multiple measurements with typical variation. LEDiL Oy reserves the right to without prior notification make changes and improvements to its products.

LEDiL Oy assumes neither warranty, nor guarantee nor any other liability of any kind for the contents and correctness of the provided data. The provided data has been generated with highest diligence but the provided data may in reality not represent the complete possible variation range of all intrinsic parameters. Therefore, in certain cases a deviation from the provided data could occur.

LEDiL Oy reserves the right to undertake technical changes of its products without further notification which could lead to changes in the provided data. LEDiL Oy assumes no liability of any kind for the possible deviation from any provided data or any other damage resulting from the usage of the provided data.

The user agrees to this disclaimer and user agreement with the download or usage of the provided files.

#### LEDiL Oy

Joensuunkatu 7  
FI-24240 SALO  
Finland

#### LEDiL Inc.

228 West Page Street  
Suite D  
Sycamore IL 60178  
USA

#### Ledil Optics Technology (Shenzhen) Co., Ltd.

# 405 , Block B  
Casic Motor Building  
Shenzhen 518057  
P.R.CHINA

#### Local sales and technical support

[www.ledil.com/  
where\\_to\\_buy](http://www.ledil.com/where_to_buy)

#### Shipping locations

Poznan, Poland  
Hong Kong, China

#### Distribution Partners

[www.ledil.com/  
where\\_to\\_buy](http://www.ledil.com/where_to_buy)