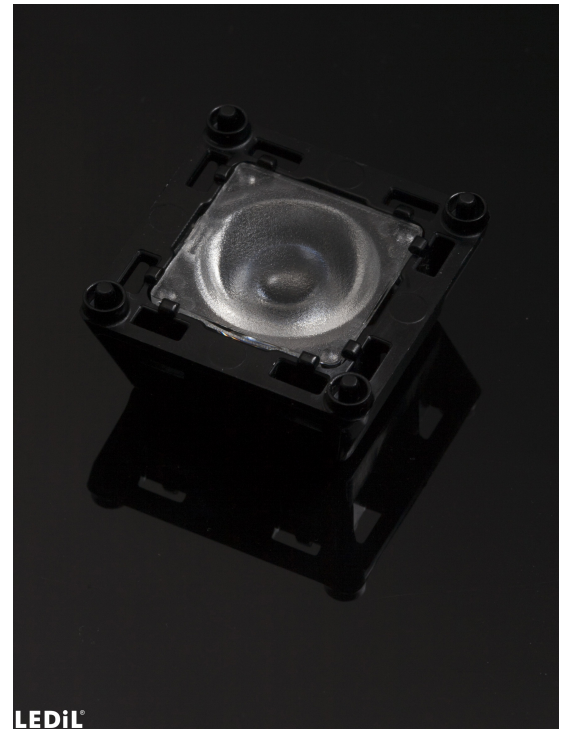


FLORENTINA-1-MRK-BW

~60° batwing beam compatible with ultra high power LEDs.

SPECIFICATION:

Dimensions	39.7 x 39.7 mm
Height	17.6 mm
Fastening	tape, pin
ROHS compliant	yes ⓘ



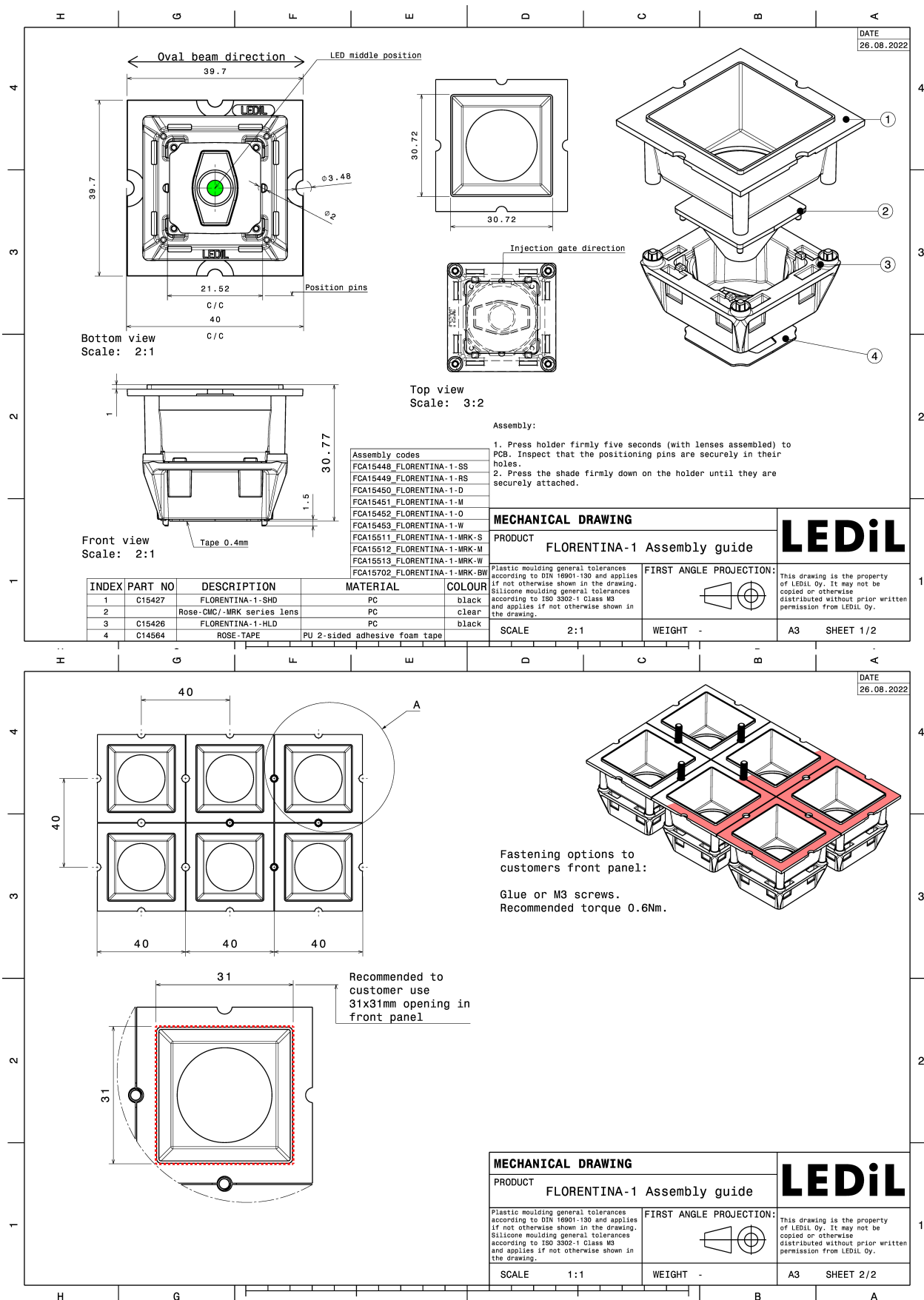
LEDiL®

MATERIALS:

Component	Type	Material	Colour	Finish	Length
ROSE-MRK-BW	Single lens	PC	clear		21.6
FLORENTINA-1-HLD	Holder	PC	black		32.6
ROSE-TAPE	Tape	Acrylic foam	black		21.6

ORDERING INFORMATION:

Component	Qty in box	MOQ	MPQ	Box weight (kg)
FCA15702_FLORENTINA-1-MRK-BW » Box size: 480 x 280 x 300 mm	840	60	60	7.9

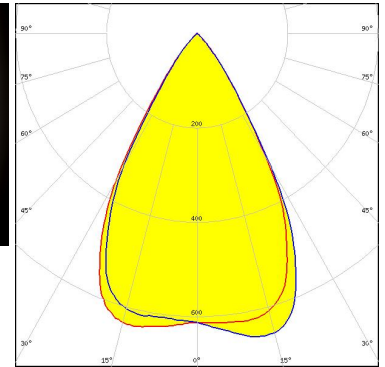
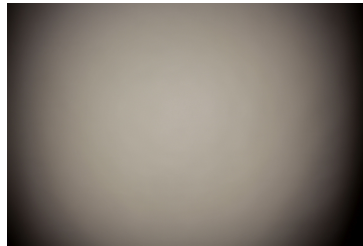


See also our general installation guide: www.ledil.com/installation_guide

OPTICAL RESULTS (MEASURED):



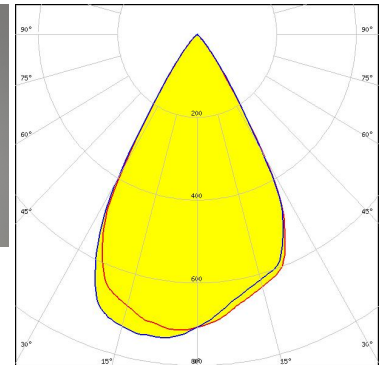
LED XHP50.2
FWHM / FWTM 62.0° / 81.0°
Efficiency 61 %
Peak intensity 0.7 cd/lm
LEDs/each optic 1
Light colour/type White
Required components:
C15427_FLORENTINA-1-SHD-60



Light distribution files



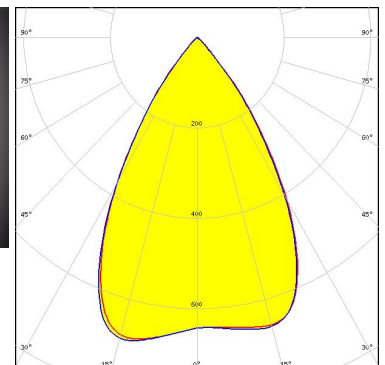
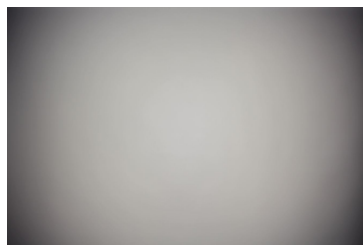
LED XP-G3
FWHM / FWTM 60.0° / 76.0°
Efficiency 64 %
Peak intensity 0.8 cd/lm
LEDs/each optic 1
Light colour/type White
Required components:
C15427_FLORENTINA-1-SHD-60



Light distribution files



LED LUXEON M/MX
FWHM / FWTM 64.0° / 84.0°
Efficiency 63 %
Peak intensity 0.7 cd/lm
LEDs/each optic 1
Light colour/type White
Required components:
C15427_FLORENTINA-1-SHD-60

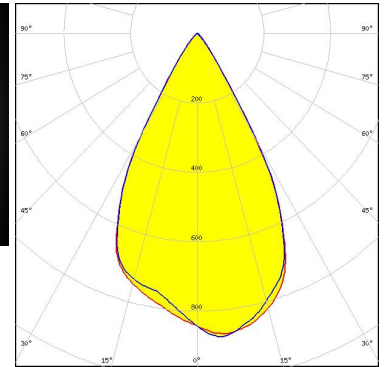
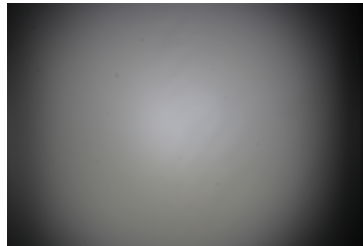


Light distribution files

OPTICAL RESULTS (MEASURED):



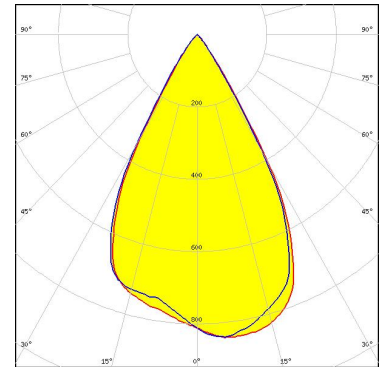
LED NF2x757G
 FWHM / FWTM 57.0° / 73.0°
 Efficiency 71 %
 Peak intensity 0.9 cd/lm
 LEDs/each optic 1
 Light colour/type White
 Required components:
 C16701_FLORENTINA-1-SHD-60-WHT



Light distribution files



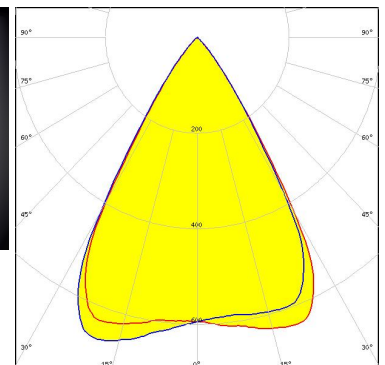
LED NF2x757G
 FWHM / FWTM 59.0° / 74.0°
 Efficiency 69 %
 Peak intensity 0.9 cd/lm
 LEDs/each optic 1
 Light colour/type White
 Required components:
 C15427_FLORENTINA-1-SHD-60



Light distribution files



LED NVSW319B
 FWHM / FWTM 63.0° / 80.0°
 Efficiency 66 %
 Peak intensity 0.7 cd/lm
 LEDs/each optic 1
 Light colour/type White
 Required components:
 C15427_FLORENTINA-1-SHD-60

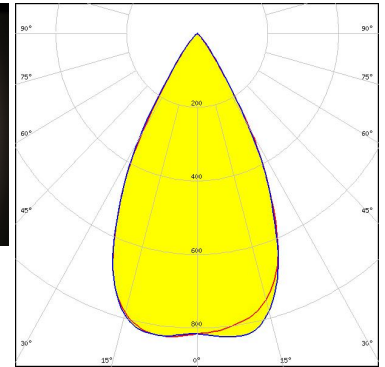


Light distribution files

OPTICAL RESULTS (MEASURED):

OSRAM
Opto Semiconductors

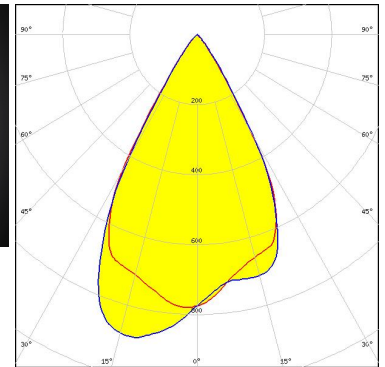
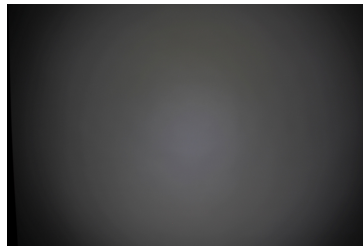
LED Duris S8
FWHM / FWTM 55.0° / 74.0°
Efficiency 66 %
Peak intensity 0.8 cd/lm
LEDs/each optic 1
Light colour/type White
Required components:
C15427_FLORENTINA-1-SHD-60



Light distribution files

SAMSUNG

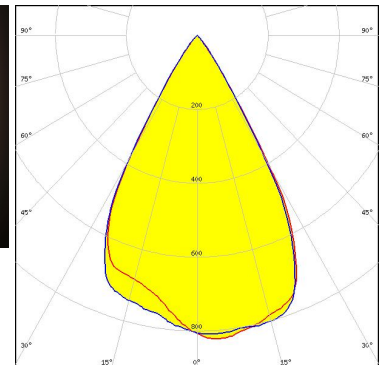
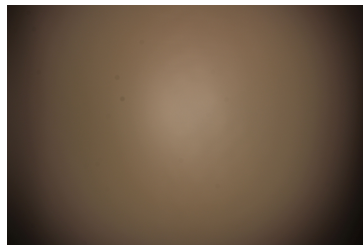
LED LM561B
FWHM / FWTM 59.0° / 74.0°
Efficiency 68 %
Peak intensity 0.9 cd/lm
LEDs/each optic 1
Light colour/type White
Required components:
C15427_FLORENTINA-1-SHD-60



Light distribution files

SEOUL
SEOUL SEMICONDUCTOR

LED SEOUL 5630
FWHM / FWTM 59.0° / 74.0°
Efficiency 70 %
Peak intensity 0.8 cd/lm
LEDs/each optic 1
Light colour/type White
Required components:
C15427_FLORENTINA-1-SHD-60

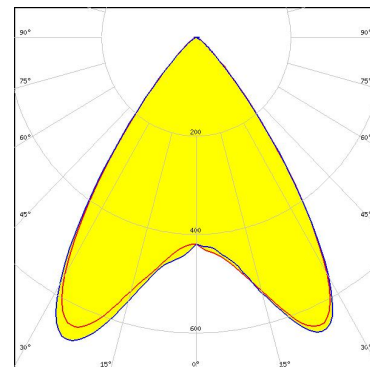


Light distribution files

OPTICAL RESULTS (SIMULATED):

SAMSUNG

LED	LH351B
FWHM / FWTM	72.0° / 94.0°
Efficiency	82 %
Peak intensity	0.7 cd/lm
LEDs/each optic	1
Light colour/type	White
Required components:	



Light distribution files

GENERAL INFORMATION:

NOTE: The typical beam angle will be changed by different color, chip size and chip position tolerance. The typical total beam angle is the full angle measured where the luminous intensity is half of the peak value.

MATERIALS:

As part of our continuous research and improvement processes, and to ensure the best possible quality and availability of our products, LEDiL reserves the right to change material grades without notice.

PRODUCT DATA USER AGREEMENT AND DISCLAIMER:

The measured data in the provided downloadable LEDiL Product Datasheets and Mechanical 2D-Drawings is rounded and provided as reference for planning. LEDiL Oy's optical specifications have been verified by conducting performance testing of the products in accordance with the company's quality system. The reported data are averaged results of multiple measurements with typical variation. LEDiL Oy reserves the right to without prior notification make changes and improvements to its products.

LEDiL Oy assumes neither warranty, nor guarantee nor any other liability of any kind for the contents and correctness of the provided data. The provided data has been generated with highest diligence but the provided data may in reality not represent the complete possible variation range of all intrinsic parameters. Therefore, in certain cases a deviation from the provided data could occur.

LEDiL Oy reserves the right to undertake technical changes of its products without further notification which could lead to changes in the provided data. LEDiL Oy assumes no liability of any kind for the possible deviation from any provided data or any other damage resulting from the usage of the provided data.

The user agrees to this disclaimer and user agreement with the download or usage of the provided files.

LEDiL Oy

Joensuunkatu 13
FI-24240 SALO
Finland

LEDiL Inc.

228 West Page Street
Suite D
Sycamore IL 60178
USA

Ledil Optics Technology (Shenzhen) Co., Ltd.

405 , Block B
Casic Motor Building
Shenzhen 518057
P.R.CHINA

Local sales and technical support

[www.ledil.com/
where_to_buy](http://www.ledil.com/where_to_buy)

Shipping locations

Poznan, Poland
Hong Kong, China

Distribution Partners

[www.ledil.com/
where_to_buy](http://www.ledil.com/where_to_buy)