

HEKLA-RZ-LENS

Colour mixing sublens for HEKLA sockets and
HEKLA-G2 and -G2B connectors

SPECIFICATION:

Dimensions	Ø 33.6
Height	2.9 mm
Fastening	socket
ROHS compliant	yes ⓘ

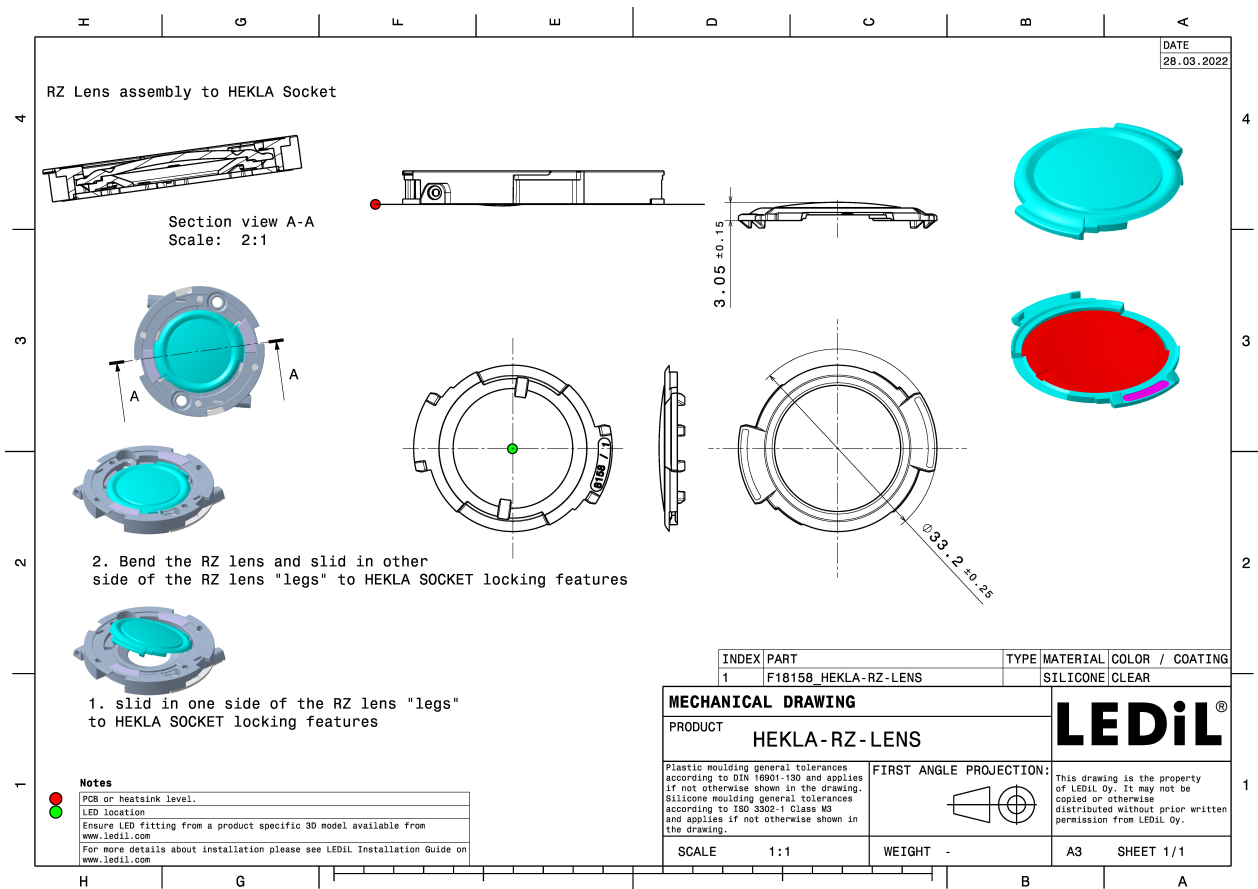


MATERIALS:

Component	Type	Material	Colour	Finish	Length (mm)
HEKLA-RZ-LENS	Accessory	Silicone	clear		

ORDERING INFORMATION:

Component	Qty in box	MOQ	MPQ	Box weight (kg)
F18158_HEKLA-RZ-LENS » Box size: 398 x 298 x 140 mm	3150	45	45	2.7



See also our general installation guide: www.ledil.com/installation_guide

AVAILABLE LEDiL PRODUCTS:

Product name	Description
F14988_HEKLA-SOCKET-E	Version compatible with COBs of 15.8 x 15.8 mm packages and max 14.3 mm LES size
FP15072_ZORYA-SC-C	~340° omnidirectional decorative beam. Assembly with HEKLA adapter.
F15253_HEKLA-SOCKET-A	Version compatible with COBs of 12.5 x 12.5 mm packages and max 9 mm LES size
CP17408_YASMEEN-70-S-C	~15° spot beam. Assembly with holder C compatible with LEDiL HEKLA. Black version.
CP17412_YASMEEN-70-M-C	~26° wide beam. Assembly with holder C compatible with LEDiL HEKLA. Black version.
CP17415_YASMEEN-70-W-C	~36° wide beam. Assembly with holder C compatible with LEDiL HEKLA. Black version.
CP17416_YASMEEN-70-WW-C	~60° wide beam. Assembly with holder C compatible with LEDiL HEKLA. Black version.
CP17572_YASMEEN-70-S-C-WHT	~15° spot beam. Assembly with holder C compatible with LEDiL HEKLA. White version.
CP17573_YASMEEN-70-M-C-WHT	~26° spot beam. Assembly with holder C compatible with LEDiL HEKLA. White version.
CP17574_YASMEEN-70-W-C-WHT	~36° wide beam. Assembly with holder C compatible with LEDiL HEKLA. White version.
CP17575_YASMEEN-70-WW-C-WHT	~60° wide beam. Assembly with holder C compatible with LEDiL HEKLA. White version.
CP17690_AMY-50-M-C	
CP17691_AMY-50-W-C	
CP17692_AMY-50-WW-C	
CN17743_YASMEEN-70-ZOOM-C	
CP17782_AMY-70-S-C	
CP17783_AMY-70-M-C	
CN17949_YASMEEN-70-ZOOM-C-WHT	Infinitely adjustable beam from 16 to 41 degrees. Assembly with holder C compatible with LEDiL HEKLA. White version.
CP18041_AMY-50-S2-C	
CP18442_AMY-50-WAS-C	
CP18492_AMY-70-O-C	
CP18494_AMY-50-O-C	

CP18562_AMY-70-RS-C

CP18572_AMY-110-M-C

CP18573_AMY-110-W-C

CP18574_AMY-110-WW-C

CN18621_AMY-70-ZOOM-C

Infinitely adjustable beam from 20 to 50 degrees. Assembly with holder C compatible with LEDiL HEKLA. Black version.

CP18643_AMY-50-RS-C

CN18649_AMY-50-ZOOM-C

Infinitely adjustable beam from 20 to 50 degrees. Assembly with holder C compatible with LEDiL HEKLA. Black version.

CP18767_YASMEEN-70-RS-C2

~10° spot beam with tight cutoff. Assembly with holder C compatible with LEDiL HEKLA. Black version.

CP18781_YASMEEN-70-RS-C2-WHT

~10° spot beam with tight cutoff. Assembly with holder C compatible with LEDiL HEKLA. White version.

AVAILABLE LEDiL PRODUCTS:

Product name	Description
CN18895_ADELY-50-S	~15° spot beam
CN18896_ADELY-50-M	~24° medium beam
CN18897_ADELY-50-W	~36° wide beam
CN18898_ADELY-50-WW	~50° wide beam
CN18920_ADELY-70-S	~15° spot beam
CN18921_ADELY-70-M	~24° medium beam
CN18922_ADELY-70-W	~36° wide beam
CN18923_ADELY-70-WW	~55° wide beam
CP19028_AMY-110-S-C-WHT	~18° spot beam. Assembly with holder C compatible with LEDiL HEKLA. White version.
CP19030_AMY-110-W-C-WHT	~36° wide beam. Assembly with holder C compatible with LEDiL HEKLA. White version.
CP19031_AMY-110-WW-C-WHT	~60° wide beam. Assembly with holder C compatible with LEDiL HEKLA. White version.
MBO19199_YASMEEN-70-S	~15° spot beam
MBO19224_YASMEEN-70-M	~26° wide beam
MBO19225_YASMEEN-70-W	~36° wide beam
MBO19227_YASMEEN-70-WWW	~80° wide beam. Assembly with holder C (LEDiL HEKLA) and B (BJB and B+W). Black and white versions.
MBO19228_YASMEEN-70-RS	~10° spot beam
MBO19229_YASMEEN-70-ZOOM	Infinitely adjustable beam from 15 to 45 degrees
MBO19254_YASMEEN-50-S	~15° spot beam
MBO19255_YASMEEN-50-M	~26° medium beam
MBO19256_YASMEEN-50-W	~36° wide beam
MBO19257_YASMEEN-50-WW	~60° wide beam
MBO19258_YASMEEN-50-ZOOM	Infinitely adjustable beam from 15 to 45 degrees
MBO19263_AMY-110-S	~18° spot beam
MBO19264_AMY-110-M	~24° medium beam
MBO19265_AMY-110-W	~36° wide beam
MBO19266_AMY-110-WW	~60° wide beam
MBO19267_AMY-70-S	~18° spot beam

MBO19269_AMY-70-W	~36° wide beam
MBO19270_AMY-70-WW	~60° wide beam
MBO19271_AMY-70-O	~25 + 60° oval beam
MBO19272_AMY-70-RS	~13° spot beam with tight cutoff
MBO19273_AMY-70-WAS	Asymmetric beam for wall-washing
MBO19274_AMY-70-ZOOM	Infinitely adjustable beam from 20 to 50 degrees
MBO19275_AMY-50-S2	~15° spot beam with soft cutoff
MBO19276_AMY-50-S	~18° spot beam
MBO19277_AMY-50-M	~24° medium beam
MBO19278_AMY-50-W	~36° wide beam
MBO19279_AMY-50-WW	~60° wide beam
MBO19280_AMY-50-O	~20 + 50° oval beam
MBO19281_AMY-50-RS	~15° spot beam with tight cutoff
MBO19282_AMY-50-ZOOM	Infinitely adjustable beam from 20 to 50 degrees
MBO19283_AMY-50-WAS	Asymmetric beam for wall-washing
MBO19222_AMY-50-WWW	~80° wide beam
MBO19736_AMY-70-WWW	~80° wide beam
MBO19784_YASMEEN-50-RS	~10° spot beam
MBO19934_YASMEEN-70-FR-S	~5° ultra-narrow spot beam
MBO19935_YASMEEN-50-FR-S	~6° ultra-narrow spot beam

GENERAL INFORMATION:

NOTE: The typical beam angle will be changed by different color, chip size and chip position tolerance. The typical total beam angle is the full angle measured where the luminous intensity is half of the peak value.

MATERIALS:

As part of our continuous research and improvement processes, and to ensure the best possible quality and availability of our products, LEDiL reserves the right to change material grades without notice.

PRODUCT DATA USER AGREEMENT AND DISCLAIMER:

The measured data in the provided downloadable LEDiL Product Datasheets and Mechanical 2D-Drawings is rounded and provided as reference for planning. LEDiL Oy's optical specifications have been verified by conducting performance testing of the products in accordance with the company's quality system. The reported data are averaged results of multiple measurements with typical variation. LEDiL Oy reserves the right to without prior notification make changes and improvements to its products.

LEDiL Oy assumes neither warranty, nor guarantee nor any other liability of any kind for the contents and correctness of the provided data. The provided data has been generated with highest diligence but the provided data may in reality not represent the complete possible variation range of all intrinsic parameters. Therefore, in certain cases a deviation from the provided data could occur.

LEDiL Oy reserves the right to undertake technical changes of its products without further notification which could lead to changes in the provided data. LEDiL Oy assumes no liability of any kind for the possible deviation from any provided data or any other damage resulting from the usage of the provided data.

The user agrees to this disclaimer and user agreement with the download or usage of the provided files.

LEDiL Oy

Joensuunkatu 7
FI-24100 SALO
Finland

LEDiL Inc.

228 West Page Street
Suite D
Sycamore IL 60178
USA

Ledil Optics Technology (Shenzhen) Co., Ltd.

405 , Block B
Casic Motor Building
Shenzhen 518057
P.R.CHINA

Local sales and technical support

[www.ledil.com/
where_to_buy](http://www.ledil.com/where_to_buy)

Shipping locations

Poznan, Poland
Hong Kong, China

Distribution Partners

[www.ledil.com/
where_to_buy](http://www.ledil.com/where_to_buy)