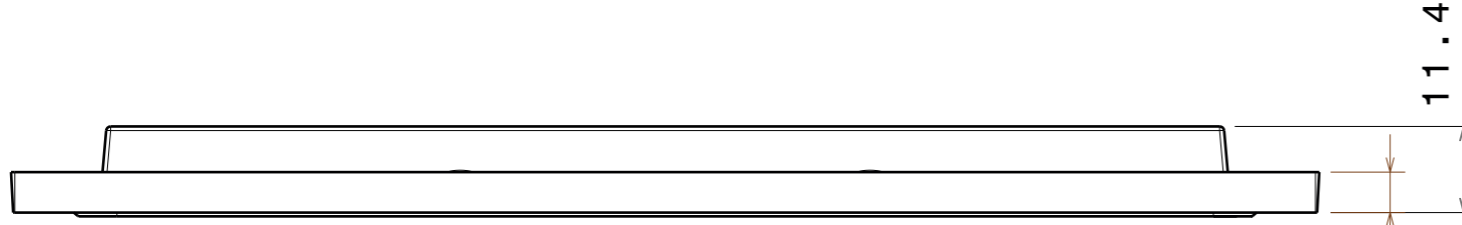
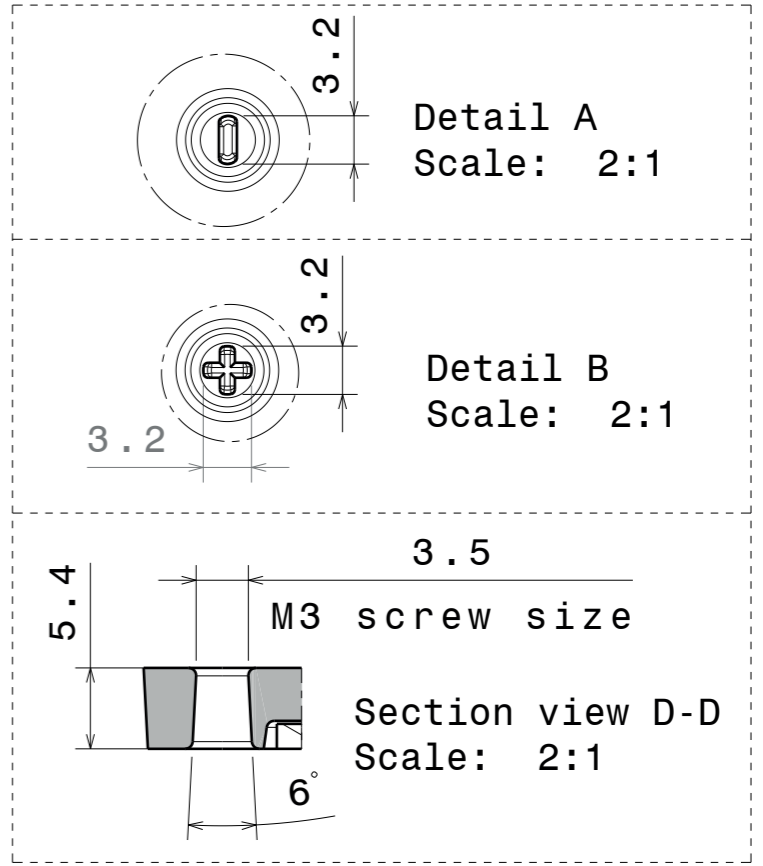
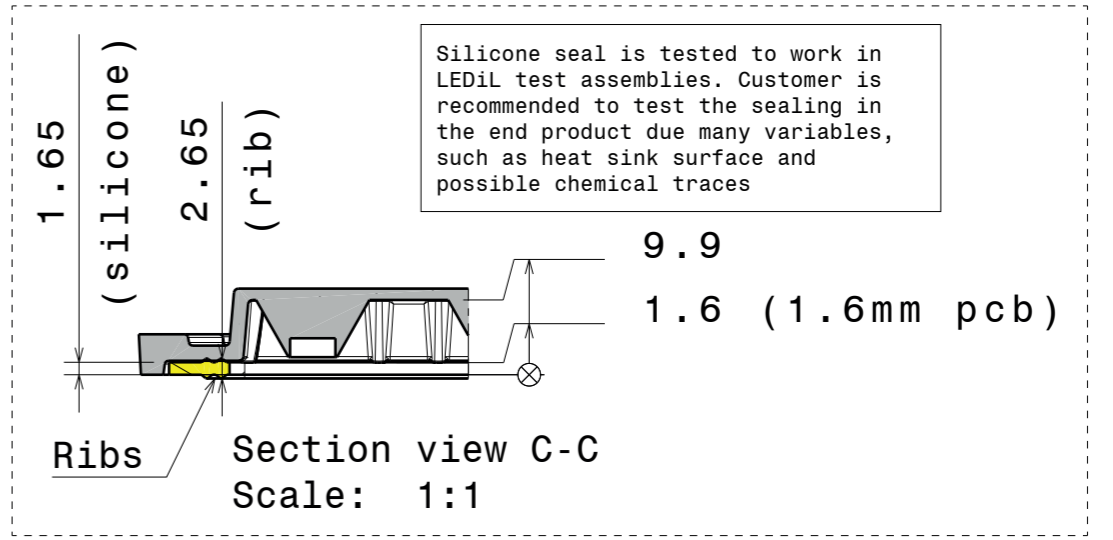
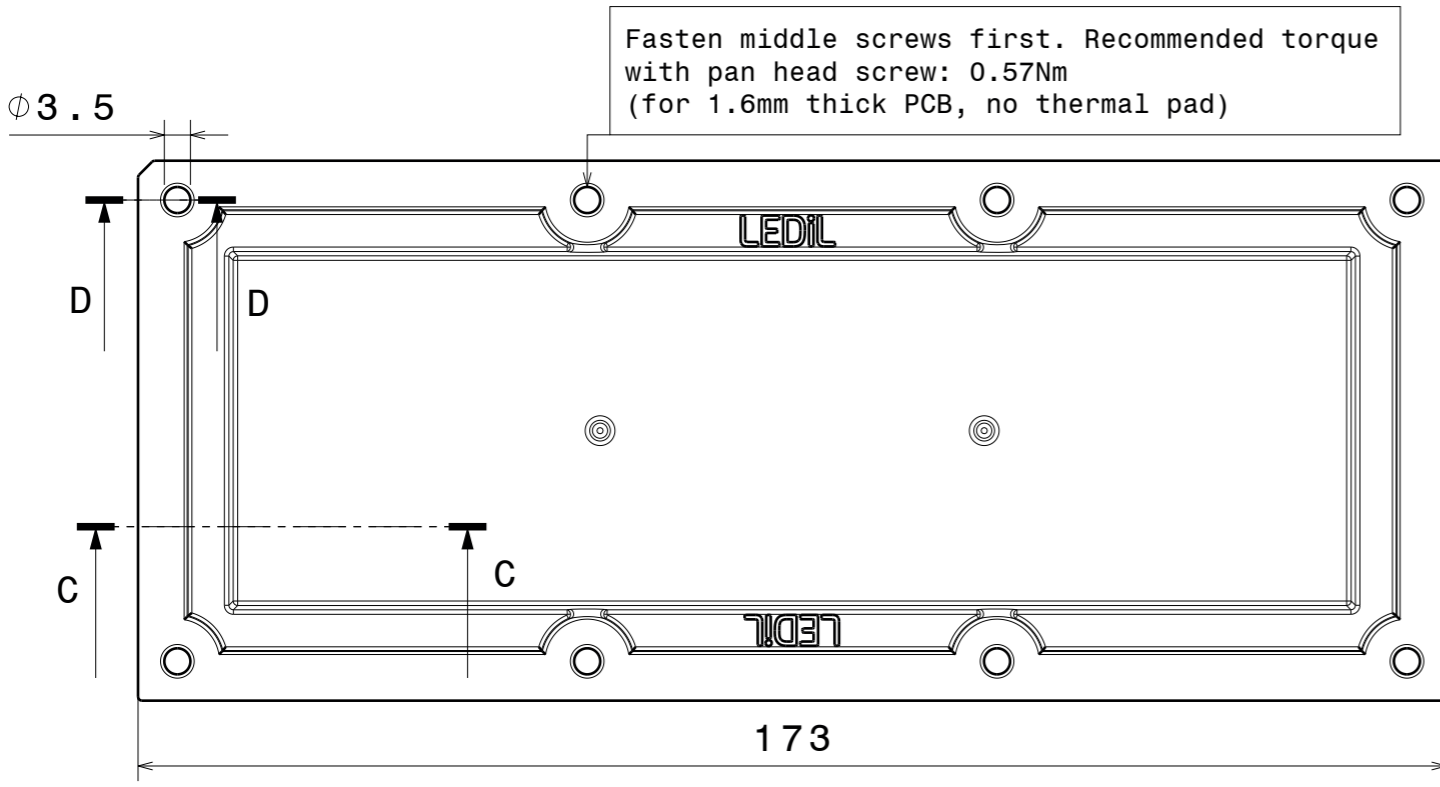


Wiring:
 PCB is fully sealed between
 the lens with silicone seal
 and the heatsink. Wiring
 needs to be done trough the
 PCB and heat sink to
 maintain high IP rating.



Fasten middle screws first. Recommended torque
 with pan head screw: 0.57Nm
 (for 1.6mm thick PCB, no thermal pad)



INDEX	PART NO	DESCRIPTION	MATERIAL	COLOUR
1	CS14130	HB-IP-2x6-W	PMMA 8N, Silicone seal	

Plastic moulding general tolerances
 according to DIN 16901-130 and applies
 if not otherwise shown in the drawing.
 Silicone moulding general tolerances
 according to ISO 3302-1 Class M3 and applies
 if not otherwise shown in the drawing.

LEDiL Oy
 Salorankatu 10
 FIN 24240 SALO
 Finland

THIRD ANGLE PROJECTION:

DRAWING TITLE
 CS14130_HB-IP-2x6-W

This drawing is the property
 of LEDiL Oy. It may not be
 reproduced, copied or
 communicated without a written
 agreement with LEDiL Oy."

SIZE	PART NUMBER
A3	CS14130

SCALE	1:1	WEIGHT	SHEET	1/1
-------	-----	--------	-------	-----