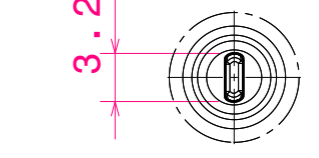
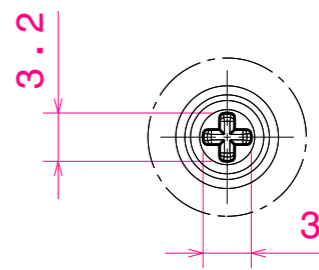


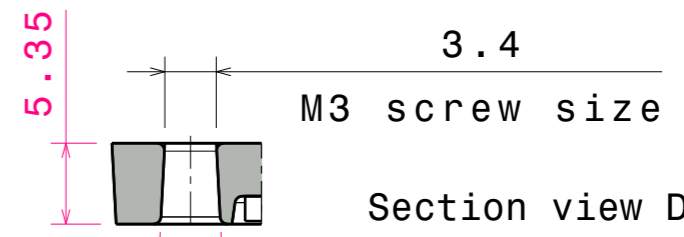
Wiring:  
PCB is fully sealed between the lens with silicone seal and the heatsink. Wiring needs to be done through the PCB and heatsink to maintain high IP rating.



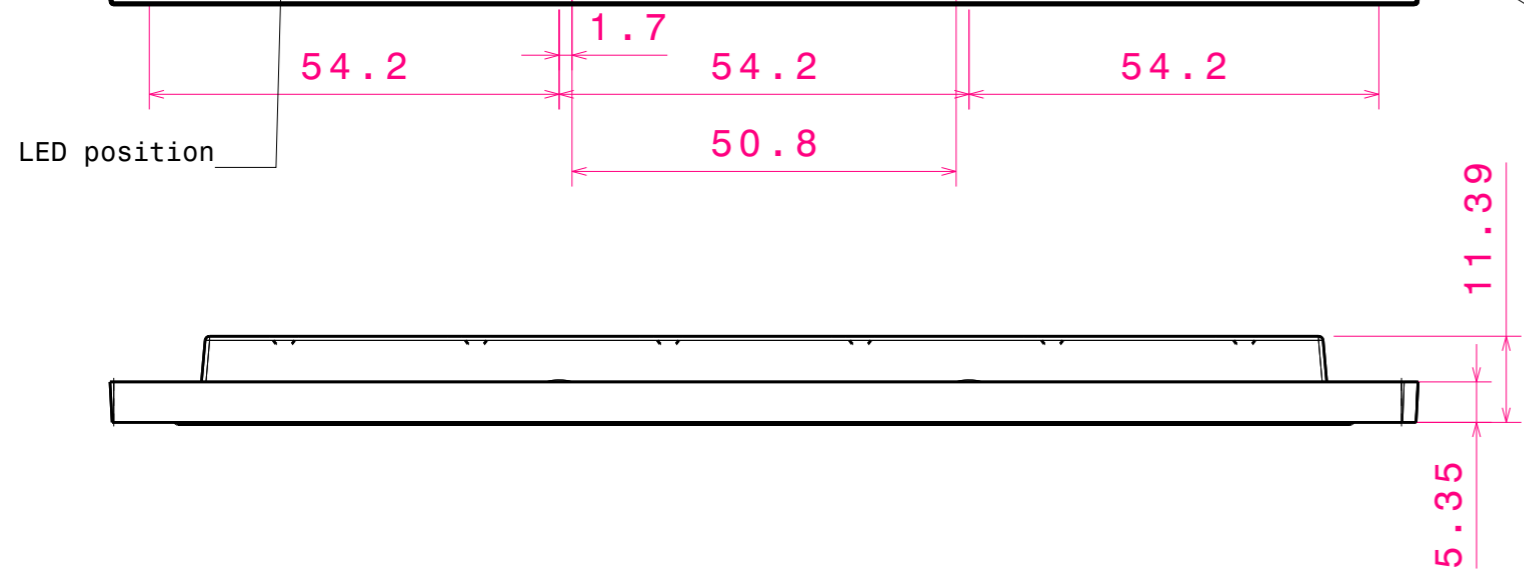
Detail A  
Scale 2:1



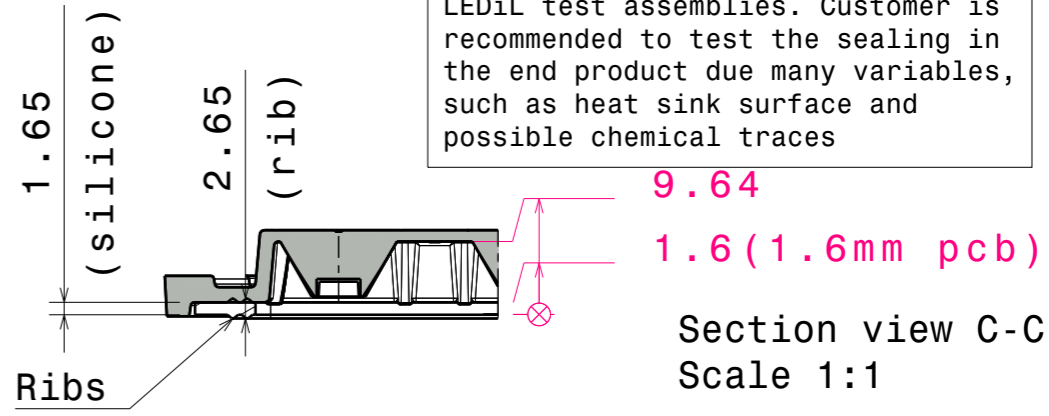
Detail B  
Scale 2:1



Section view D-D  
Scale 2:1

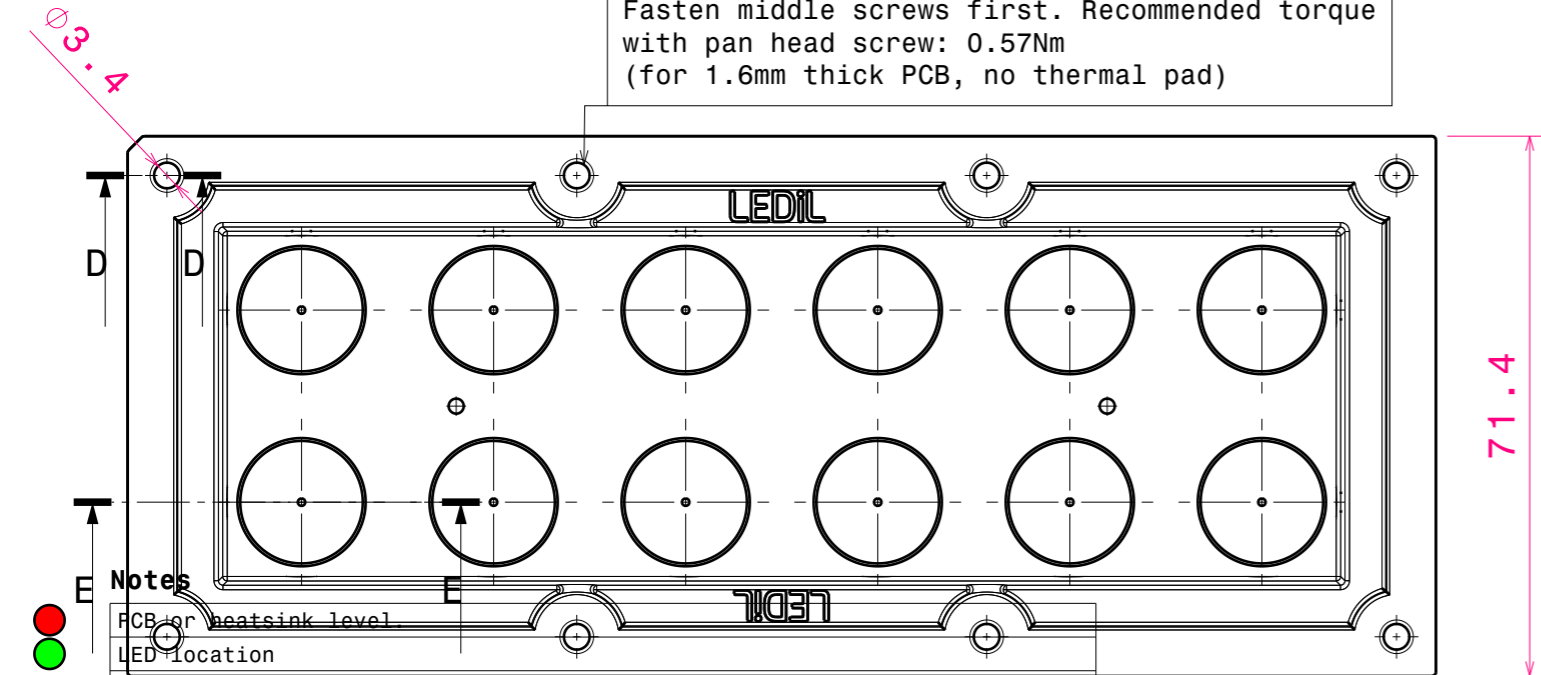


Silicone seal is tested to work in LEDiL test assemblies. Customer is recommended to test the sealing in the end product due many variables, such as heat sink surface and possible chemical traces



Section view C-C  
Scale 1:1

Fasten middle screws first. Recommended torque with pan head screw: 0.57Nm (for 1.6mm thick PCB, no thermal pad)



MechanicalModel\_HB-IP-2X6

COMPONENTS

INDEX	PART	TYPE	MATERIAL	COLOR / COATING
1	C14018_2X6-SEAL25		Silicone	
2	MechModel_HB-IP-2X6		PC	clear
3	1_Reference PCB			

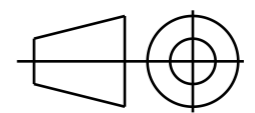
MECHANICAL DRAWING

PRODUCT  
HB

**LEDiL**®

Plastic moulding general tolerances according to DIN 16901-130 and applies if not otherwise shown in the drawing. Silicone moulding general tolerances according to ISO 3302-1 Class M3 and applies if not otherwise shown in the drawing.

FIRST ANGLE PROJECTION:



This drawing is the property of LEDiL Oy. It may not be copied or otherwise distributed without prior written permission from LEDiL Oy.

SCALE	1:1	WEIGHT	-	A3	SHEET 1/1
-------	-----	--------	---	----	-----------

Notes  
● PCB or heatsink level  
● LED location  
 Ensure LED fitting from a product specific 3D model available from [www.ledil.com](http://www.ledil.com)  
 For more details about installation please see LEDiL Installation Guide on [www.ledil.com](http://www.ledil.com)