

LAURA-M-PIN

~30° medium beam optimized for CREE XP-E.
Assembly with white holder, installation tape
and location pins.

SPECIFICATION:

Dimensions	21.6 x 21.6
Height	13.1 mm
Fastening	tape, pin
ROHS compliant	yes ⓘ

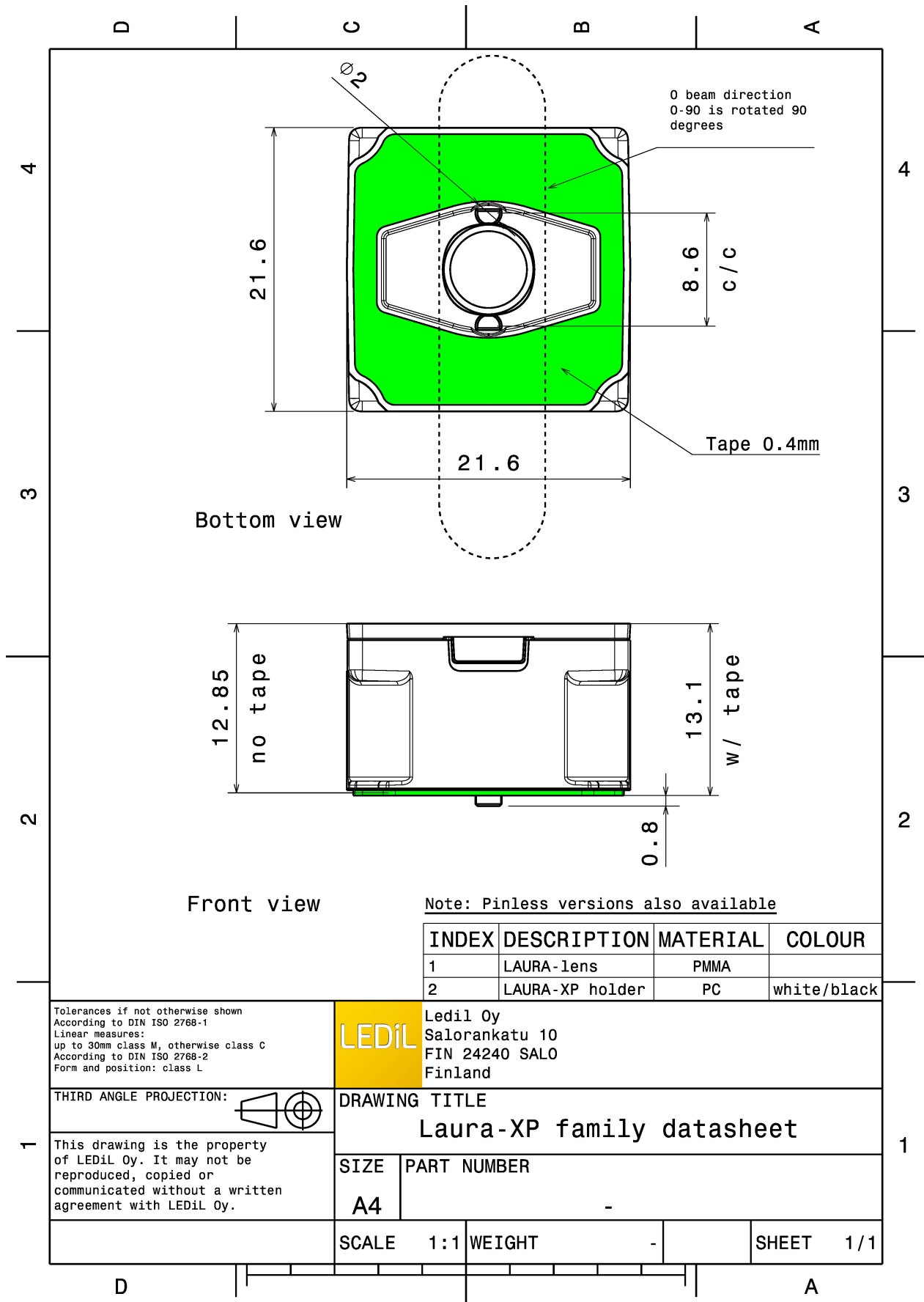


MATERIALS:

Component	Type	Material	Colour	Finish	Length (mm)
LAURA-M	Single lens	PMMA	clear		
LAURA-PIN-XP-HLD-WHT	Holder	PC	white		
ROSE-TAPE	Tape	Acrylic foam	black		

ORDERING INFORMATION:

Component	Qty in box	MOQ	MPQ	Box weight (kg)
CA11837_LAURA-M-PIN » Box size: 460 x 260 x 200 mm	1440	360	180	8.0



See also our general installation guide: www.ledil.com/installation_guide

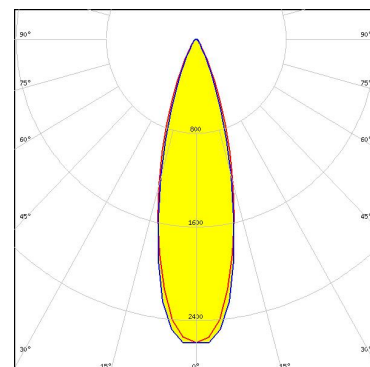
OPTICAL RESULTS (MEASURED):



LED XB-D
FWHM / FWTM 28.0°
Efficiency 92 %
Peak intensity 2.5 cd/lm
LEDs/each optic 1
Light colour/type White
Required components:



LED XP-E
FWHM / FWTM 30.0° / 53.0°
Efficiency 92 %
Peak intensity 2.6 cd/lm
LEDs/each optic 1
Light colour/type White
Required components:



Light distribution files



LED XP-E-HEW
FWHM / FWTM 27.0° / 52.0°
Efficiency 85 %
Peak intensity 2.6 cd/lm
LEDs/each optic 1
Light colour/type White
Required components:

OPTICAL RESULTS (MEASURED):



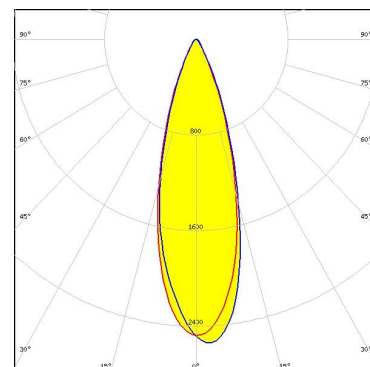
LED XP-E2
FWHM / FWTM 28.0° / 54.0°
Efficiency 88 %
Peak intensity 3 cd/lm
LEDs/each optic 1
Light colour/type White
Required components:



Light distribution files



LED XP-G
FWHM / FWTM 30.0°
Efficiency 93 %
Peak intensity 2.5 cd/lm
LEDs/each optic 1
Light colour/type White
Required components:



Light distribution files

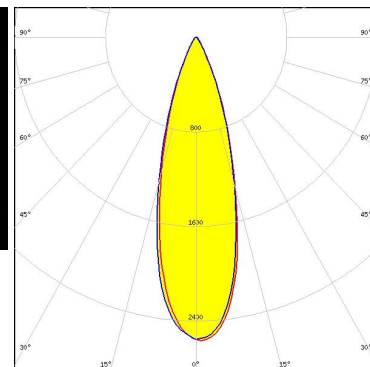
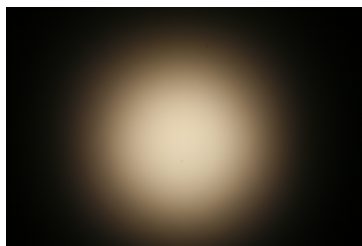


LED LUXEON Rebel
FWHM / FWTM 27.0° / 52.0°
Efficiency 88 %
Peak intensity 2.9 cd/lm
LEDs/each optic 1
Light colour/type White
Required components:

OPTICAL RESULTS (MEASURED):



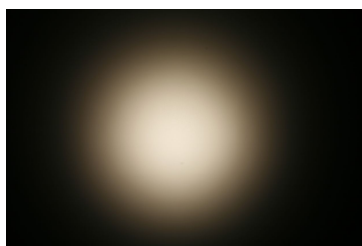
LED LUXEON T
FWHM / FWTM 30.0° / 56.0°
Efficiency 89 %
Peak intensity 2.4 cd/lm
LEDs/each optic 1
Light colour/type White
Required components:



Light distribution files



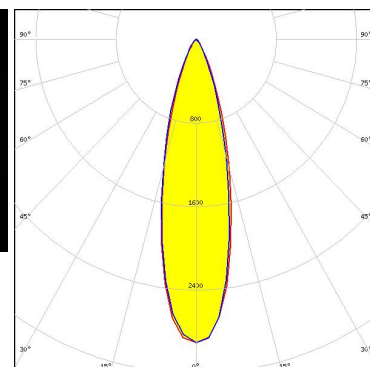
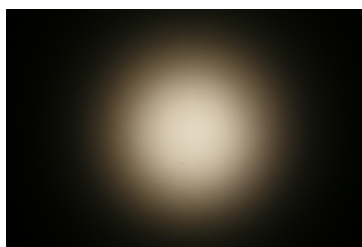
LED LUXEON Z ES
FWHM / FWTM 26.0° / 50.0°
Efficiency 92 %
Peak intensity 3.6 cd/lm
LEDs/each optic 1
Light colour/type White
Required components:



Light distribution files



LED NCSxx19B
FWHM / FWTM 28.0° / 54.0°
Efficiency 86 %
Peak intensity 2.9 cd/lm
LEDs/each optic 1
Light colour/type White
Required components:

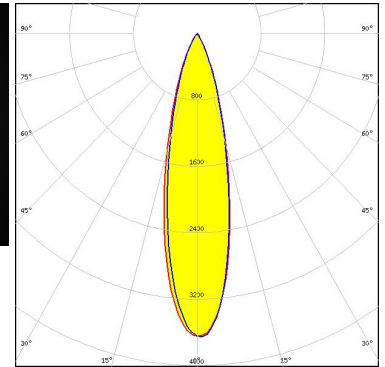
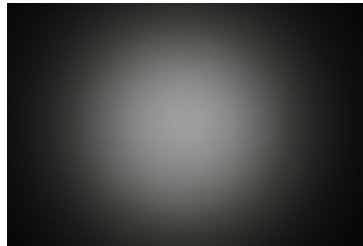


Light distribution files

OPTICAL RESULTS (MEASURED):



LED NF2x757D
 FWHM / FWTM 25.0° / 51.0°
 Efficiency 88 %
 Peak intensity 3.7 cd/lm
 LEDs/each optic 1
 Light colour/type White
 Required components:



Light distribution files



LED OSLON Square EC
 FWHM / FWTM 27.0° / 54.0°
 Efficiency 86 %
 Peak intensity 2.4 cd/lm
 LEDs/each optic 1
 Light colour/type White
 Required components:



LED OSLON SSL 150
 FWHM / FWTM 26.0° / 50.0°
 Efficiency 87 %
 Peak intensity 2.7 cd/lm
 LEDs/each optic 1
 Light colour/type White
 Required components:

OPTICAL RESULTS (MEASURED):

OSRAM Opto Semiconductors

LED OSLON SSL 80
FWHM / FWTM 30.0° / 56.0°
Efficiency 88 %
Peak intensity 2.4 cd/lm
LEDs/each optic 1
Light colour/type White
Required components:

OSRAM Opto Semiconductors

LED SFH 4725S
FWHM / FWTM 22.0° / 48.0°
Efficiency %
LEDs/each optic 1
Light colour/type White
Required components:

Light distribution files

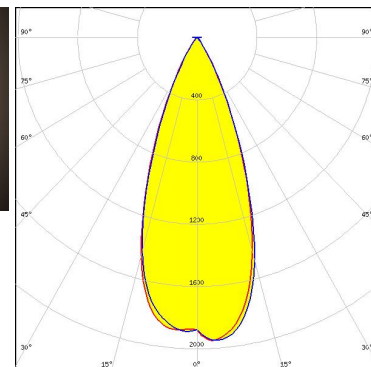
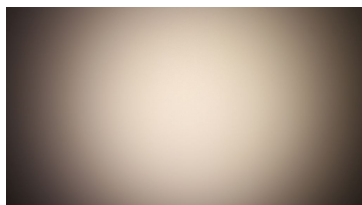
SECL SEOUL SEMICONDUCTOR

LED Z5
FWHM / FWTM 29.0°
Efficiency %
LEDs/each optic 1
Light colour/type White
Required components:

OPTICAL RESULTS (SIMULATED):



LED XP-G3
FWHM / FWTM 39.0° / 62.0°
Efficiency 93 %
Peak intensity 2 cd/lm
LEDs/each optic 1
Light colour/type White
Required components:



Light distribution files



LED LUXEON H50-2
FWHM / FWTM 32.5° / 52.0°
Efficiency 85 %
Peak intensity 2.6 cd/lm
LEDs/each optic 1
Light colour/type White
Required components:



LED LUXEON IR Domed 150 (L110-0xxx150000000)
FWHM / FWTM 20.0° / 41.0°
Efficiency 0 %
LEDs/each optic 1
Light colour/type White
Required components:

OPTICAL RESULTS (SIMULATED):



LED LUXEON IR Domed 60 (L110-0xxx060000000)

FWHM / FWTM 25.0° / 44.0°

Efficiency 94 %

LEDs/each optic 1

Light colour/type White

Required components:



LED LUXEON IR Domed 90 (L110-0xxx090000000)

FWHM / FWTM 25.0° / 48.0°

Efficiency 94 %

LEDs/each optic 1

Light colour/type White

Required components:



LED NV4WB35AM

FWHM / FWTM 32.0° / 56.0°

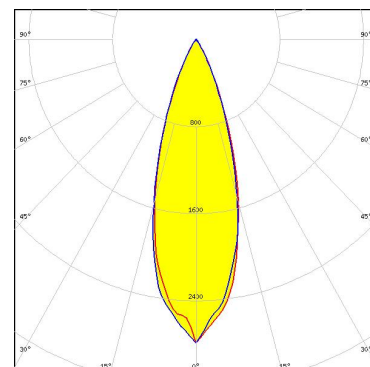
Efficiency 96 %

Peak intensity 2.8 cd/lm

LEDs/each optic 1

Light colour/type White

Required components:

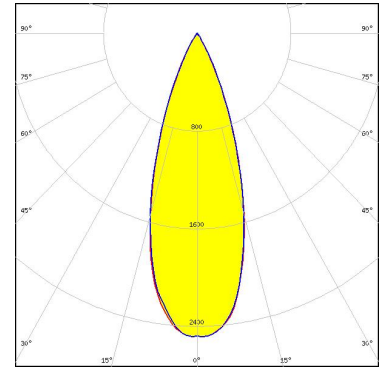


Light distribution files

OPTICAL RESULTS (SIMULATED):



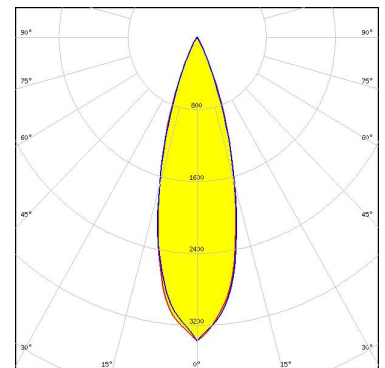
LED NVSxx19B/NVSxx19C
 FWHM / FWTM 36.0° / 58.0°
 Efficiency 94 %
 Peak intensity 2.5 cd/lm
 LEDs/each optic 1
 Light colour/type White
 Required components:



Light distribution files



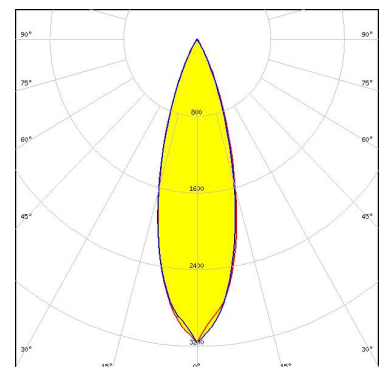
LED OSLOM Signal
 FWHM / FWTM 30.0° / 51.0°
 Efficiency 96 %
 Peak intensity 3.4 cd/lm
 LEDs/each optic 1
 Light colour/type Red
 Required components:



Light distribution files



LED OSLOM Square CSSRM2/CSSRM3
 FWHM / FWTM 30.0° / 54.0°
 Efficiency 94 %
 Peak intensity 3.2 cd/lm
 LEDs/each optic 1
 Light colour/type White
 Required components:



Light distribution files

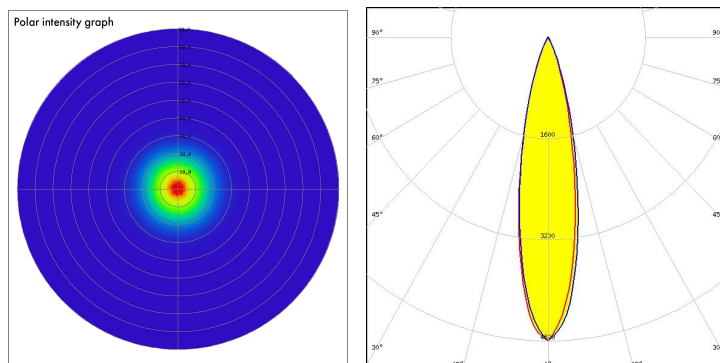
OPTICAL RESULTS (SIMULATED):

OSRAM
Opto Semiconductors

LED OSLON Square PC
FWHM / FWTM 29.0°
Efficiency %
LEDs/each optic 1
Light colour/type White
Required components:

OSRAM
Opto Semiconductors

LED SFH 4715AS
FWHM / FWTM 23.0° / 44.0°
Efficiency 96 %
LEDs/each optic 1
Light colour/type IR
Required components:



Light distribution files

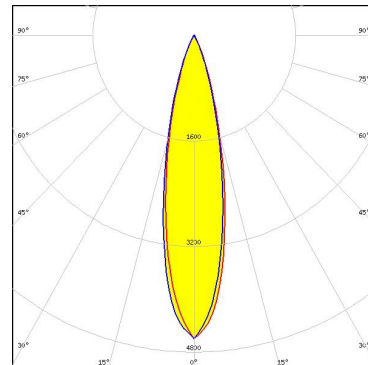
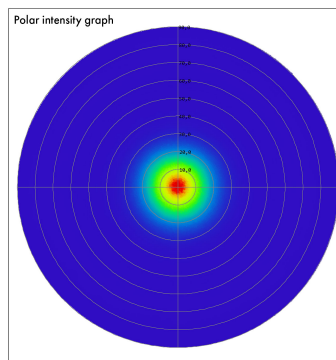
OSRAM
Opto Semiconductors

LED SFH 4715S
FWHM / FWTM 30.0°
Efficiency 85 %
LEDs/each optic 1
Light colour/type White
Required components:

OPTICAL RESULTS (SIMULATED):

OSRAM
Opto Semiconductors

LED SFH 4725AS
FWHM / FWTM 23.0° / 45.0°
Efficiency 96 %
LEDs/each optic 1
Light colour/type IR
Required components:



Light distribution files

GENERAL INFORMATION:

NOTE: The typical beam angle will be changed by different color, chip size and chip position tolerance. The typical total beam angle is the full angle measured where the luminous intensity is half of the peak value.

MATERIALS:

As part of our continuous research and improvement processes, and to ensure the best possible quality and availability of our products, LEDiL reserves the right to change material grades without notice.

PRODUCT DATA USER AGREEMENT AND DISCLAIMER:

The measured data in the provided downloadable LEDiL Product Datasheets and Mechanical 2D-Drawings is rounded and provided as reference for planning. LEDiL Oy's optical specifications have been verified by conducting performance testing of the products in accordance with the company's quality system. The reported data are averaged results of multiple measurements with typical variation. LEDiL Oy reserves the right to without prior notification make changes and improvements to its products.

LEDiL Oy assumes neither warranty, nor guarantee nor any other liability of any kind for the contents and correctness of the provided data. The provided data has been generated with highest diligence but the provided data may in reality not represent the complete possible variation range of all intrinsic parameters. Therefore, in certain cases a deviation from the provided data could occur.

LEDiL Oy reserves the right to undertake technical changes of its products without further notification which could lead to changes in the provided data. LEDiL Oy assumes no liability of any kind for the possible deviation from any provided data or any other damage resulting from the usage of the provided data.

The user agrees to this disclaimer and user agreement with the download or usage of the provided files.

LEDiL Oy

Joensuunkatu 7
FI-24240 SALO
Finland

LEDiL Inc.

228 West Page Street
Suite D
Sycamore IL 60178
USA

Ledil Optics Technology (Shenzhen) Co., Ltd.

405 , Block B
Casic Motor Building
Shenzhen 518057
P.R.CHINA

Local sales and technical support

[www.ledil.com/
where_to_buy](http://www.ledil.com/where_to_buy)

Shipping locations

Poznan, Poland
Hong Kong, China

Distribution Partners

[www.ledil.com/
where_to_buy](http://www.ledil.com/where_to_buy)