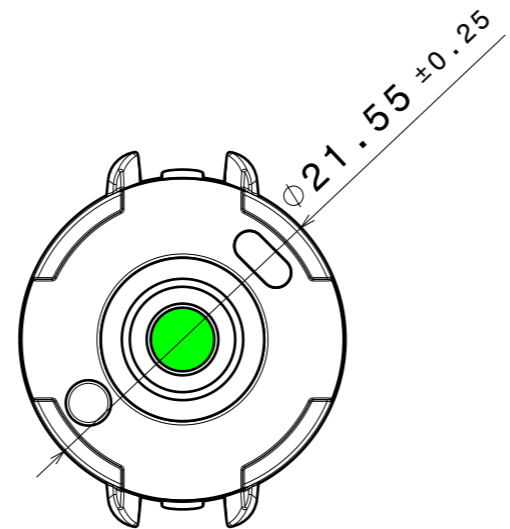
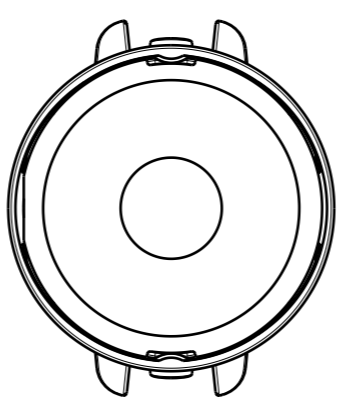
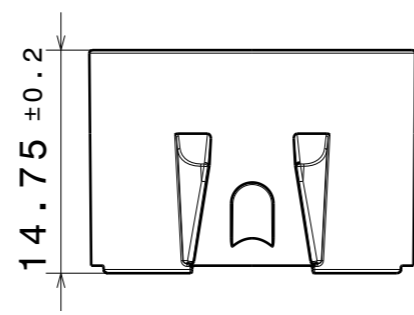
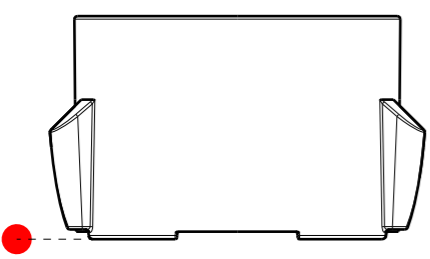
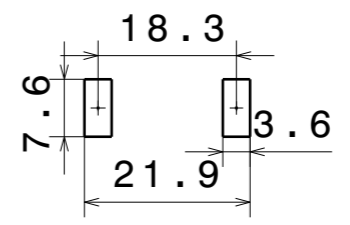


C19452\_LEILA-Y-SC2-HLD-WHT



Recommended PAD design



CP19457\_LEILA-Y-SC2-WW-WHT

**COMPONENTS**

| PART                       | TYPE   | COUNT | MATERIAL | COLOR / COATING |
|----------------------------|--------|-------|----------|-----------------|
| C18086_LEILA-Y-WW          | LENS   | 1     | PMMA     | CLEAR           |
| C19452_LEILA-Y-SC2-HLD-WHT | HOLDER | 1     | PC       | WHITE           |

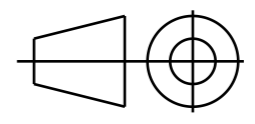
**MECHANICAL DRAWING**

PRODUCT  
**LEILA-Y-SC2-WW-WHT**

**LEDiL**

Plastic moulding general tolerances according to DIN 16901-130 and applies if not otherwise shown in the drawing. Silicone moulding general tolerances according to ISO 3302-1 Class M3 and applies if not otherwise shown in the drawing.

FIRST ANGLE PROJECTION:



This drawing is the property of LEDiL Oy. It may not be copied or otherwise distributed without prior written permission from LEDiL Oy.

SCALE 2:1

WEIGHT -

A3 SHEET 1/1

**Notes**

|  |   |
|--|---|
|  | PCB or heatsink level.  |
|  | LED location  |
|  | Ensure LED fitting from a product specific 3D model available from <a href="http://www.ledil.com">www.ledil.com</a>         |
|  | For more details about installation please see LEDiL Installation Guide on <a href="http://www.ledil.com">www.ledil.com</a> |