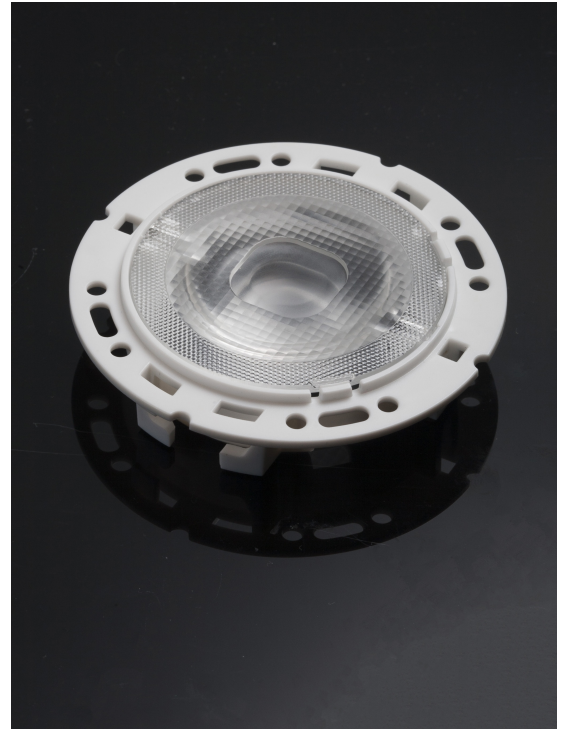


### RONDA-REC-60

~60° + 60° rectangular beam with holder A compatible with 3rd party connectors from TE, Bender+Wirth and IDEAL

#### SPECIFICATION:

Dimensions	Ø 69.9
Height	14.6 mm
Fastening	socket
ROHS compliant	yes ⓘ



#### MATERIALS:

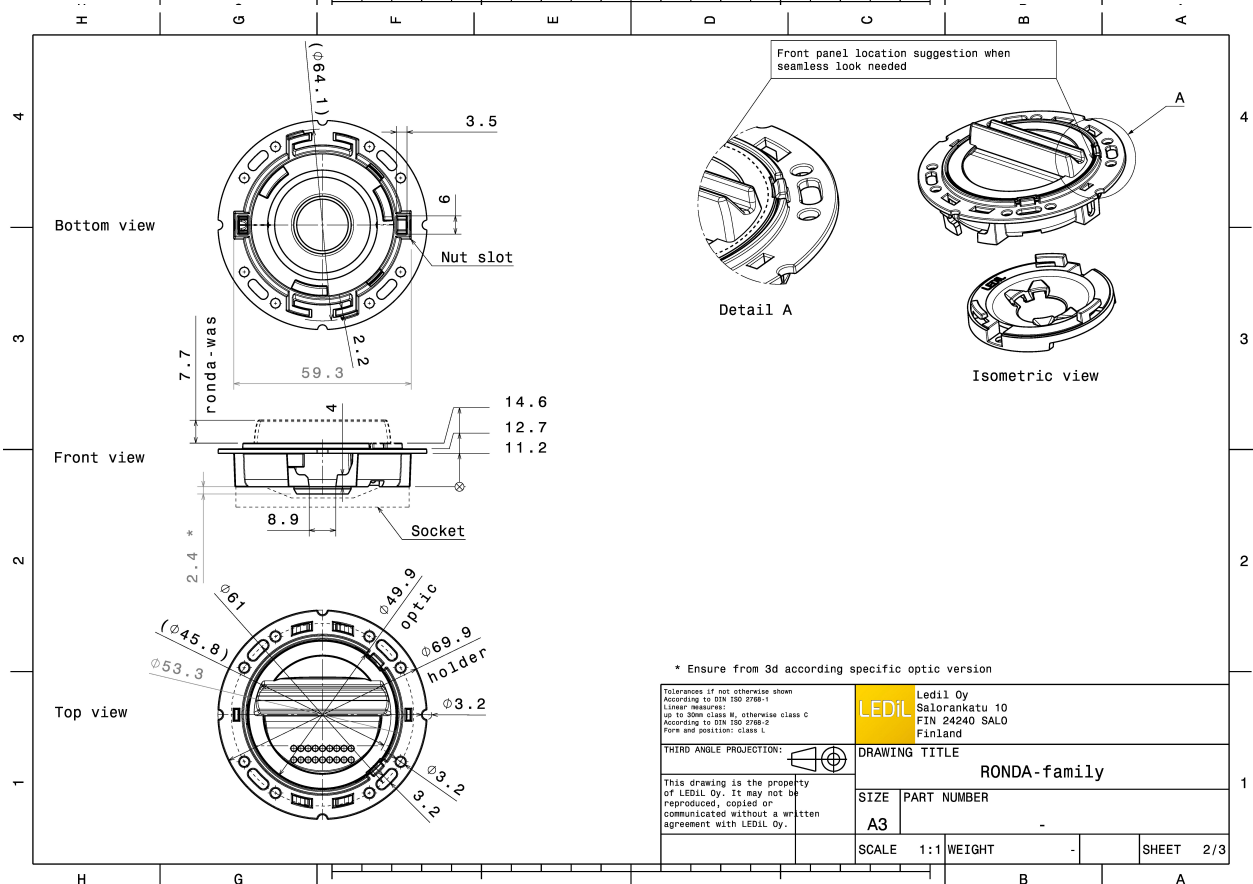
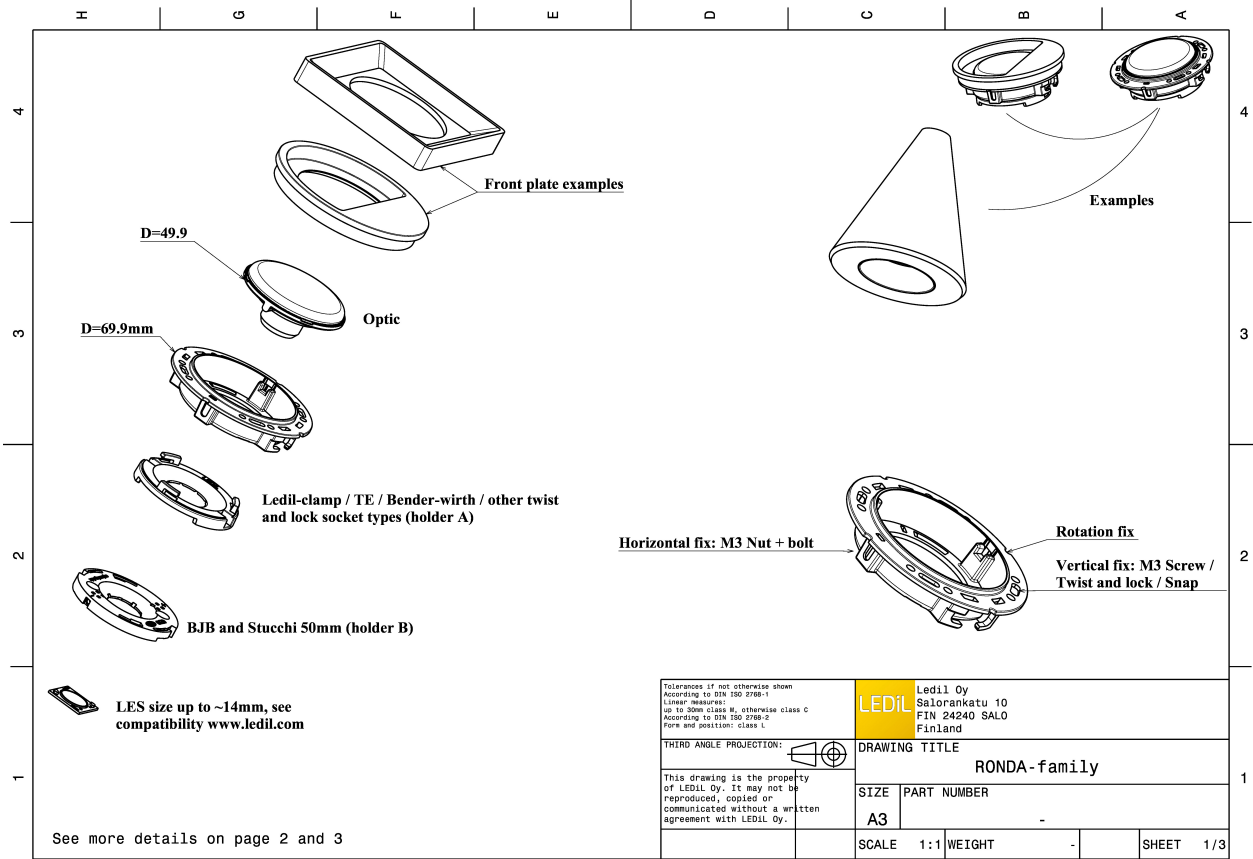
Component	Type	Material	Colour	Finish	Length (mm)
F15556_RONDA-REC-60	Single lens	PMMA	clear		
F15155_RONDA-HLD-A	Holder	PC	white		

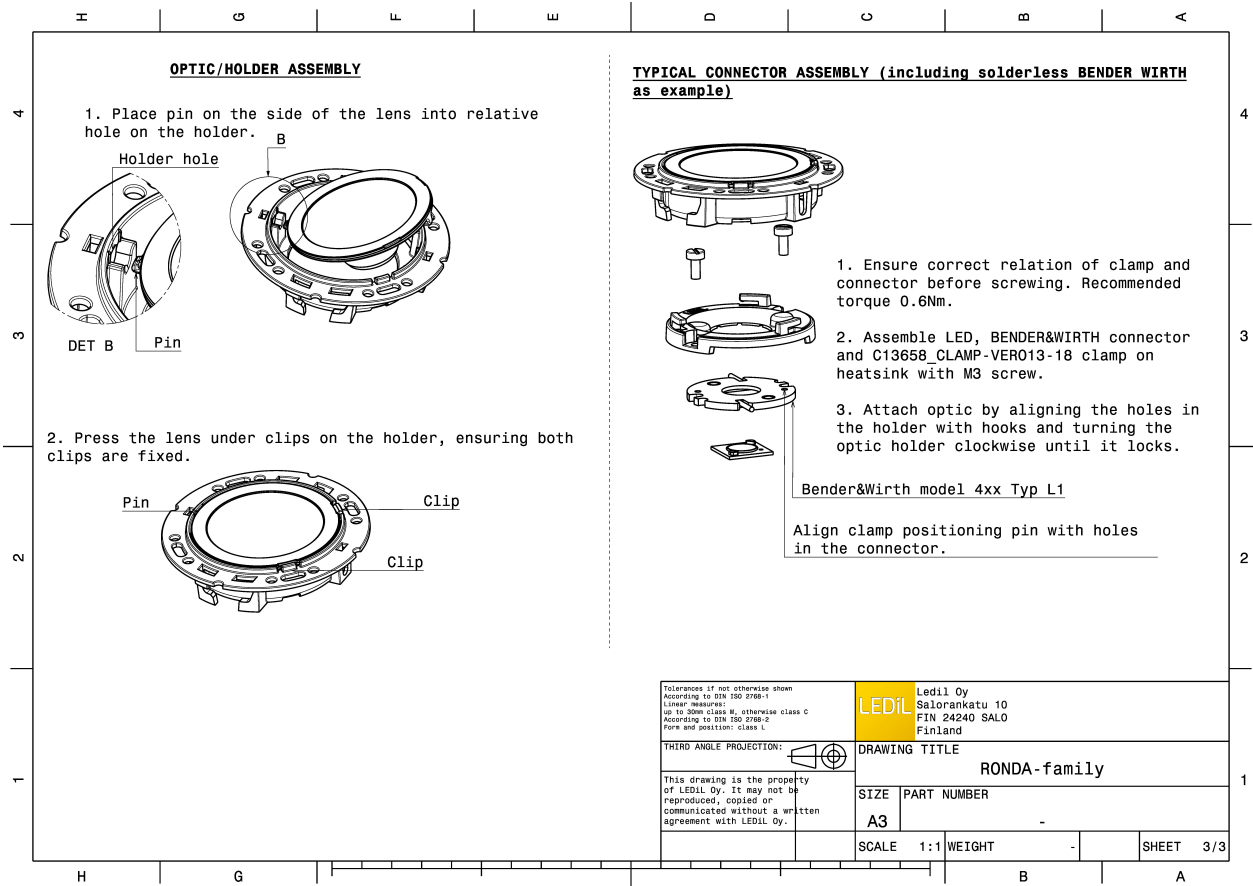
#### ORDERING INFORMATION:

##### Quantities for one set:

Single lens	1
Holder	1

Component		Qty in box	MOQ	MPQ	Box weight (kg)
F15556_RONDA-REC-60	Single lens	420	120	30	6.7
» Box size: 480 x 280 x 300 mm					
F15155_RONDA-HLD-A	Holder	420	120	30	4.4
» Box size: 480 x 280 x 300 mm					



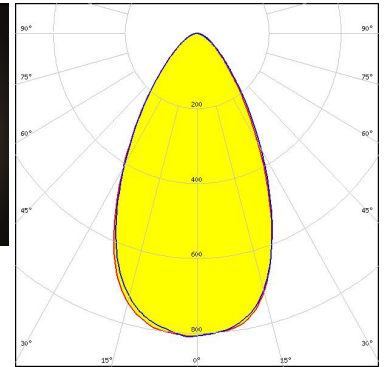
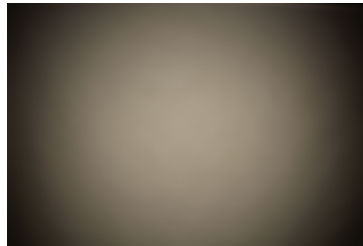


See also our general installation guide: [www.ledil.com/installation\\_guide](http://www.ledil.com/installation_guide)

### OPTICAL RESULTS (MEASURED):



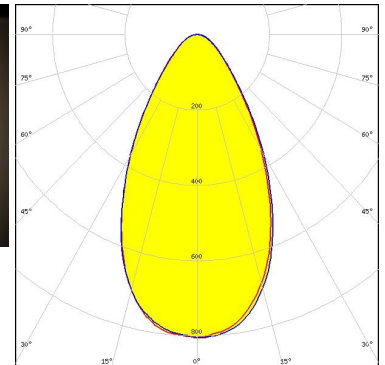
LED Vero SE 13  
FWHM / FWTM 58.0° / 103.0°  
Efficiency 90 %  
Peak intensity 0.8 cd/lm  
LEDs/each optic 1  
Light colour/type White  
Required components:  
C16402\_CLAMP-VEROSE-13-18



Light distribution files

### CITIZEN

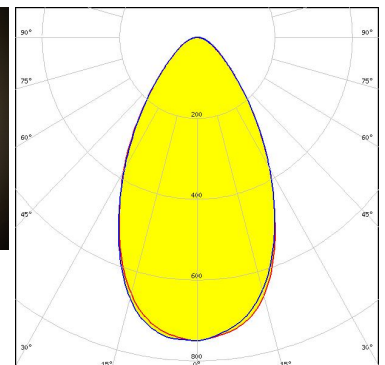
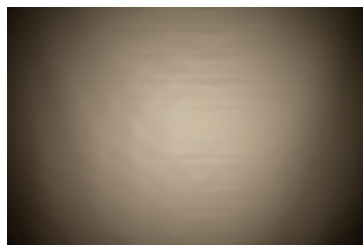
LED CLL03x/CLU03x  
FWHM / FWTM 57.0° / 104.0°  
Efficiency 89 %  
Peak intensity 0.8 cd/lm  
LEDs/each optic 1  
Light colour/type White  
Required components:  
C16791\_CLAMP-Z45-A  
TE Connectivity: 2325807-3



Light distribution files



LED CMA1840  
FWHM / FWTM 60.0° / 109.0°  
Efficiency 90 %  
Peak intensity 0.8 cd/lm  
LEDs/each optic 1  
Light colour/type White  
Required components:  
C14123\_CLAMP-CXA15-18

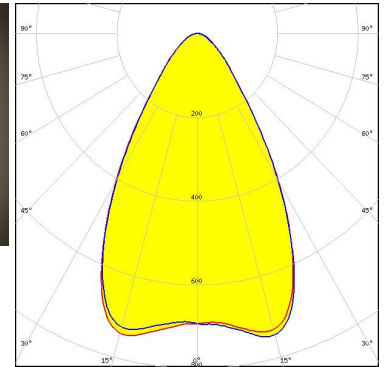
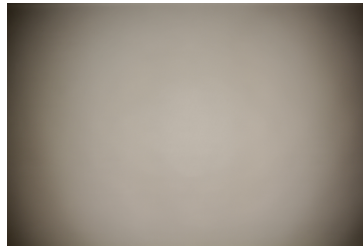


Light distribution files

### OPTICAL RESULTS (MEASURED):



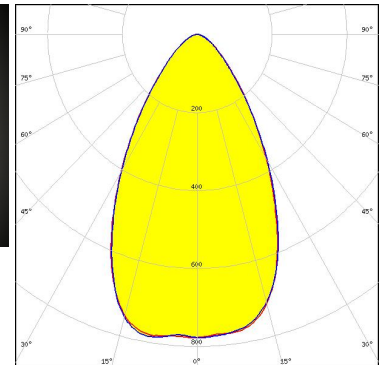
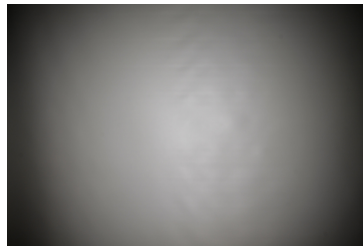
LED CXA/B 15xx  
 FWHM / FWTM 63.0° / 104.0°  
 Efficiency 91 %  
 Peak intensity 0.8 cd/lm  
 LEDs/each optic 1  
 Light colour/type White  
 Required components:  
 C14123\_CLAMP-CXA15-18



Light distribution files



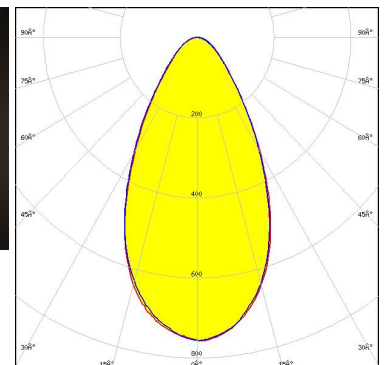
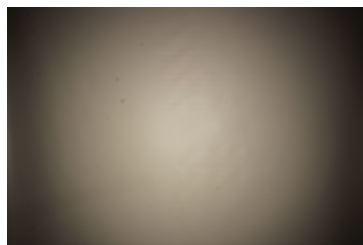
LED CXA/B 1816 & CXA/B 1820 & CXA 1850  
 FWHM / FWTM 60.0° / 104.0°  
 Efficiency 91 %  
 Peak intensity 0.8 cd/lm  
 LEDs/each optic 1  
 Light colour/type White  
 Required components:  
 C14123\_CLAMP-CXA15-18



Light distribution files



LED PrevaLED Core G7 L15 H1  
 FWHM / FWTM 55.0° / 104.0°  
 Efficiency 81 %  
 Peak intensity 0.8 cd/lm  
 LEDs/each optic 1  
 Light colour/type White  
 Required components:  
 C16685\_CLAMP-PRV-A

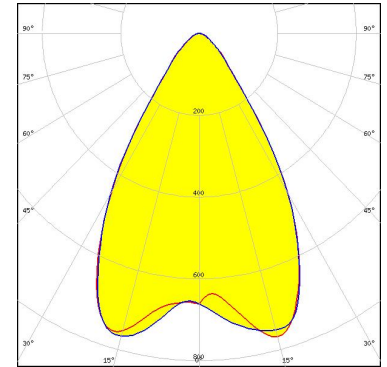


Light distribution files

### OPTICAL RESULTS (SIMULATED):

bridgelux.

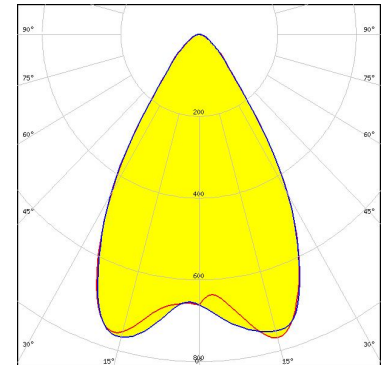
LED H9  
FWHM / FWTM 63.0°  
Efficiency 91 %  
LEDs/each optic 1  
Light colour/type White  
Required components:  
C14123\_CLAMP-CXA15-18



Light distribution files

bridgelux.

LED H9  
FWHM / FWTM 63.0°  
Efficiency 91 %  
LEDs/each optic 1  
Light colour/type White  
Required components:  
C13658\_CLAMP-VERO13-18

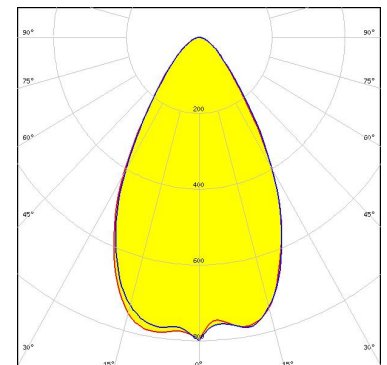


Bender Wirth: 441 Typ L1

Light distribution files

bridgelux.

LED V13 Gen7  
FWHM / FWTM 60.0°  
Efficiency 87 %  
Peak intensity 0.8 cd/lm  
LEDs/each optic 1  
Light colour/type White  
Required components:  
C13658\_CLAMP-VERO13-18



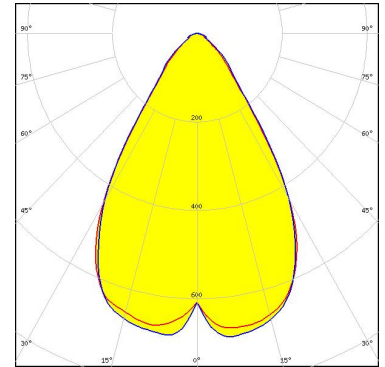
Bender Wirth: 477 Typ L1

Light distribution files

### OPTICAL RESULTS (SIMULATED):

#### CITIZEN

LED CLU700/701/702/703  
FWHM / FWTM 65.0°  
Efficiency 90 %  
LEDs/each optic 1  
Light colour/type White  
Required components:  
C13658\_CLAMP-VERO13-18

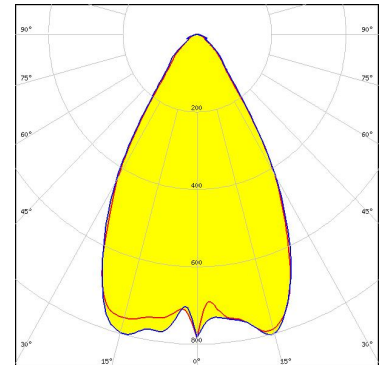


Bender Wirth: 434 Typ L1

Light distribution files

#### CITIZEN

LED CLU710/711  
FWHM / FWTM 61.0°  
Efficiency 90 %  
LEDs/each optic 1  
Light colour/type White  
Required components:  
C13658\_CLAMP-VERO13-18

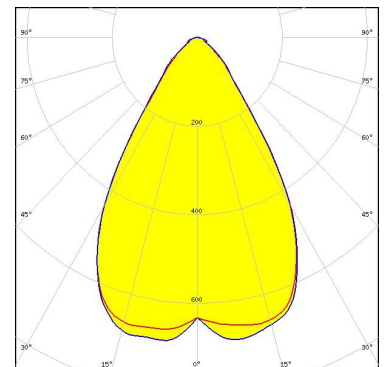


Bender Wirth: 470 Typ L1

Light distribution files



LED CXA/B 13xx  
FWHM / FWTM 65.0°  
Efficiency 90 %  
LEDs/each optic 1  
Light colour/type White  
Required components:  
C13658\_CLAMP-VERO13-18



Bender Wirth: 448 Typ L1

Light distribution files



### OPTICAL RESULTS (SIMULATED):

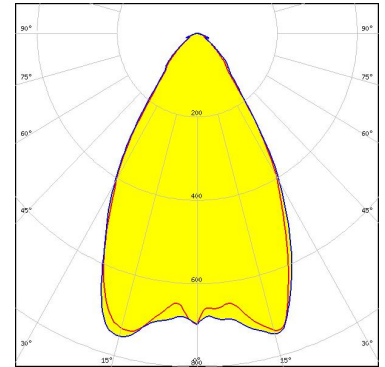


LED CXA/B 15xx  
FWHM / FWTM 62.0°  
Efficiency 89 %  
LEDs/each optic 1  
Light colour/type White

Required components:

C13658\_CLAMP-VERO13-18

Bender Wirth: 441 Typ L1



Light distribution files

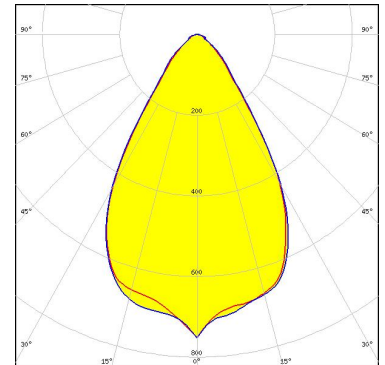


LED LUXEON CoB 1202s  
FWHM / FWTM 61.0°  
Efficiency 90 %  
LEDs/each optic 1  
Light colour/type White

Required components:

C13658\_CLAMP-VERO13-18

Bender Wirth: 452 Typ L1



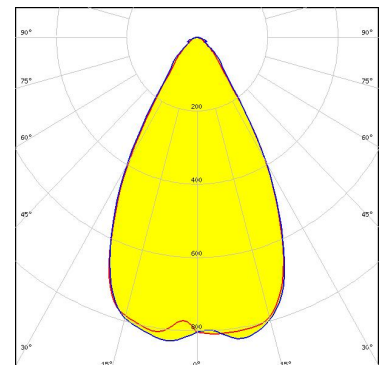
Light distribution files



LED NSCxL036A  
FWHM / FWTM 58.0° / 88.0 + 94.0°  
Efficiency 89 %  
Peak intensity 0.8 cd/lm  
LEDs/each optic 1  
Light colour/type White

Required components:

TE Connectivity: 2213382-2 + OPTIC CLIP Z50 TYPE1 2213194-1



Light distribution files

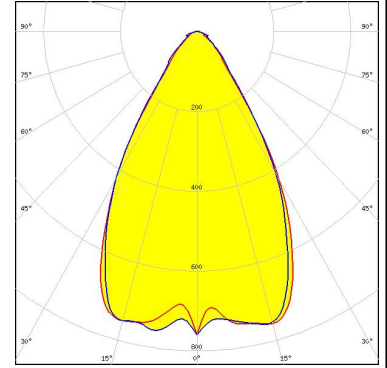
### OPTICAL RESULTS (SIMULATED):

## SHARP

LED Mini Zenigata (GW6BM)  
FWHM / FWTM 60.0°  
Efficiency %  
LEDs/each optic 1  
Light colour/type White

Required components:  
C13658\_CLAMP-VERO13-18

Bender Wirth: 452 Typ L1



Light distribution files

### GENERAL INFORMATION:

NOTE: The typical beam angle will be changed by different color, chip size and chip position tolerance. The typical total beam angle is the full angle measured where the luminous intensity is half of the peak value.

Due to use of high power COB's with this product, special attention to proper thermal design is highly recommended. LEDiL has no liability for direct, indirect or consecutive damages arising from the LEDiL products being used outside of the recommended temperature range.

### MATERIALS:

As part of our continuous research and improvement processes, and to ensure the best possible quality and availability of our products, LEDiL reserves the right to change material grades without notice.

### PRODUCT DATA USER AGREEMENT AND DISCLAIMER:

The measured data in the provided downloadable LEDiL Product Datasheets and Mechanical 2D-Drawings is rounded and provided as reference for planning. LEDiL Oy's optical specifications have been verified by conducting performance testing of the products in accordance with the company's quality system. The reported data are averaged results of multiple measurements with typical variation. LEDiL Oy reserves the right to without prior notification make changes and improvements to its products.

LEDiL Oy assumes neither warranty, nor guarantee nor any other liability of any kind for the contents and correctness of the provided data. The provided data has been generated with highest diligence but the provided data may in reality not represent the complete possible variation range of all intrinsic parameters. Therefore, in certain cases a deviation from the provided data could occur.

LEDiL Oy reserves the right to undertake technical changes of its products without further notification which could lead to changes in the provided data. LEDiL Oy assumes no liability of any kind for the possible deviation from any provided data or any other damage resulting from the usage of the provided data.

The user agrees to this disclaimer and user agreement with the download or usage of the provided files.

#### LEDiL Oy

Joensuunkatu 7  
FI-24240 SALO  
Finland

#### LEDiL Inc.

228 West Page Street  
Suite D  
Sycamore IL 60178  
USA

#### Ledil Optics Technology (Shenzhen) Co., Ltd.

# 405 , Block B  
Casic Motor Building  
Shenzhen 518057  
P.R.CHINA

#### Local sales and technical support

[www.ledil.com/  
where\\_to\\_buy](http://www.ledil.com/where_to_buy)

#### Shipping locations

Poznan, Poland  
Hong Kong, China

#### Distribution Partners

[www.ledil.com/  
where\\_to\\_buy](http://www.ledil.com/where_to_buy)