

CXP-RS

~11° spot beam optimized for CREE XP-E.
Assembly with black holder.

SPECIFICATION:

Dimensions	21.6 x 21.6 mm
Height	13.2 mm
Fastening	tape
ROHS compliant	yes ⓘ



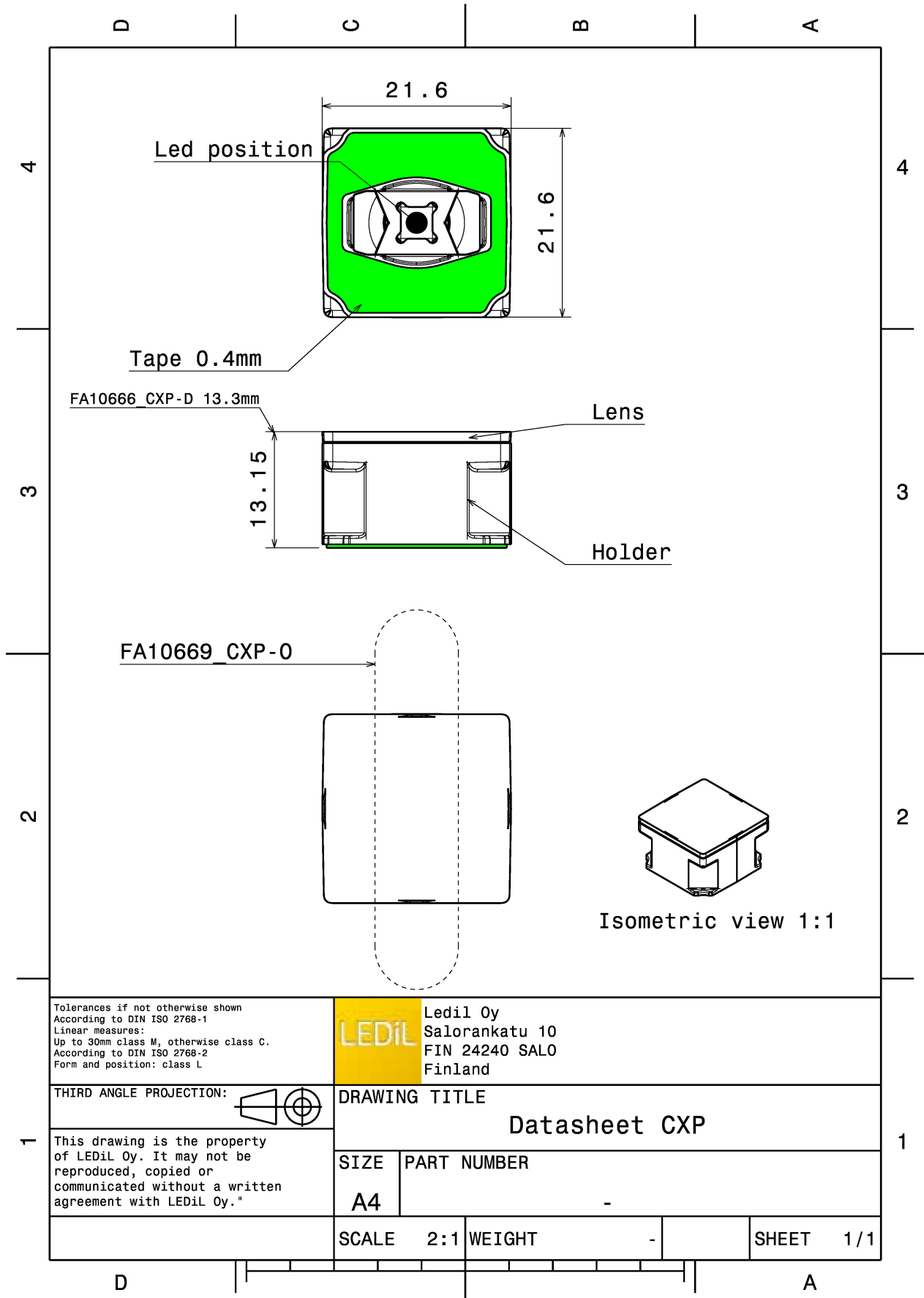
LEDiL

MATERIALS:

Component	Type	Material	Colour	Finish	Length
ROSE-B-B-RS	Single lens	PC	clear		21.6
ROSE-HLD-CXP-BLK	Holder	PC	black		21.6
ROSE-TAPE	Tape	Acrylic foam	black		21.6

ORDERING INFORMATION:

Component	Qty in box	MOQ	MPQ	Box weight (kg)
FA10668_CXP-RS » Box size:	2448	288	144	11.9



Tolerances if not otherwise shown
According to DIN ISO 2768-1
Linear measures:
Up to 30mm class M, otherwise class C.
According to DIN ISO 2768-2
Form and position: class L



Ledil Oy
Salorankatu 10
FIN 24240 SALO
Finland

THIRD ANGLE PROJECTION:

DRAWING TITLE

Datasheet CXP

This drawing is the property of LEDiL Oy. It may not be reproduced, copied or communicated without a written agreement with LEDiL Oy."

SIZE PART NUMBER

A4

-

SCALE 2:1 WEIGHT

-

SHEET 1/1

See also our general installation guide: www.ledil.com/installation_guide

OPTICAL RESULTS (MEASURED):



LED XP-E
FWHM / FWTM 7.0° / 15.0°
Efficiency 86 %
Peak intensity 24.8 cd/lm
LEDs/each optic 1
Light colour/type White
Required components:

[Light distribution files](#)

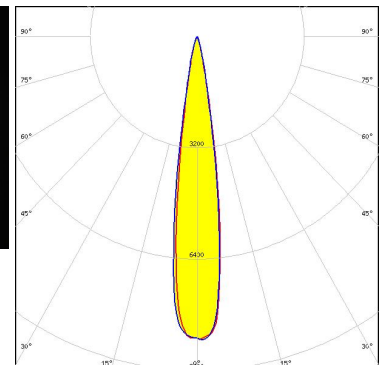
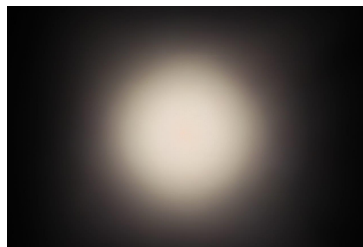


LED XP-G
FWHM / FWTM 11.0° / 21.0°
Efficiency 85 %
Peak intensity 15.9 cd/lm
LEDs/each optic 1
Light colour/type White
Required components:

[Light distribution files](#)




LED XP-L HD
FWHM / FWTM 16.0° / 28.0°
Efficiency 80 %
Peak intensity 8.7 cd/lm
LEDs/each optic 1
Light colour/type White
Required components:



[Light distribution files](#)

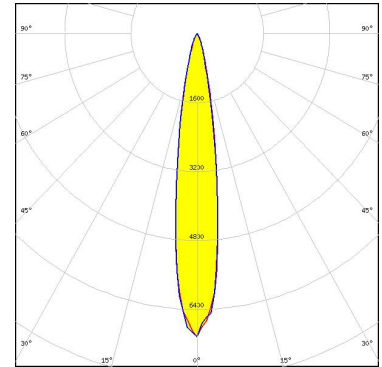
OPTICAL RESULTS (MEASURED):

 SEMI SEMICONDUCTOR	
LED	Z5
FWHM / FWTM	7.0°
Efficiency	83 %
LEDs/each optic	1
Light colour/type	White
Required components:	
Light distribution files	

OPTICAL RESULTS (SIMULATED):



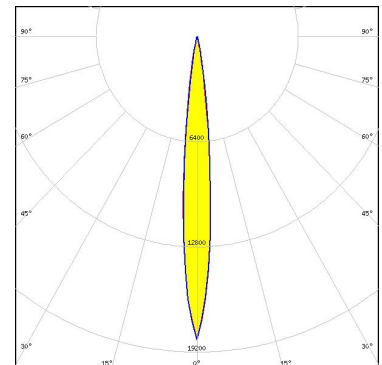
LED XHP35 HD
FWHM / FWTM 16.0° / 32.0°
Efficiency 84 %
Peak intensity 7.1 cd/lm
LEDs/each optic 1
Light colour/type White
Required components:



Light distribution files



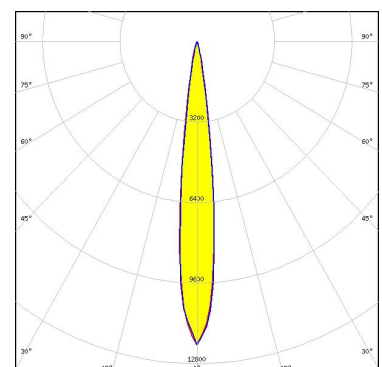
LED XP-G2
FWHM / FWTM 11.0° / 21.0°
Efficiency 87 %
Peak intensity 20.3 cd/lm
LEDs/each optic 1
Light colour/type White
Required components:



Light distribution files



LED LH351C
FWHM / FWTM 12.0° / 23.0°
Efficiency 76 %
Peak intensity 12.1 cd/lm
LEDs/each optic 1
Light colour/type White
Required components:



Light distribution files

GENERAL INFORMATION:

NOTE: The typical beam angle will be changed by different color, chip size and chip position tolerance. The typical total beam angle is the full angle measured where the luminous intensity is half of the peak value.

MATERIALS:

As part of our continuous research and improvement processes, and to ensure the best possible quality and availability of our products, LEDiL reserves the right to change material grades without notice.

PRODUCT DATA USER AGREEMENT AND DISCLAIMER:

The measured data in the provided downloadable LEDiL Product Datasheets and Mechanical 2D-Drawings is rounded and provided as reference for planning. LEDiL Oy's optical specifications have been verified by conducting performance testing of the products in accordance with the company's quality system. The reported data are averaged results of multiple measurements with typical variation. LEDiL Oy reserves the right to without prior notification make changes and improvements to its products.

LEDiL Oy assumes neither warranty, nor guarantee nor any other liability of any kind for the contents and correctness of the provided data. The provided data has been generated with highest diligence but the provided data may in reality not represent the complete possible variation range of all intrinsic parameters. Therefore, in certain cases a deviation from the provided data could occur.

LEDiL Oy reserves the right to undertake technical changes of its products without further notification which could lead to changes in the provided data. LEDiL Oy assumes no liability of any kind for the possible deviation from any provided data or any other damage resulting from the usage of the provided data.

The user agrees to this disclaimer and user agreement with the download or usage of the provided files.

LEDiL Oy

Joensuunkatu 13
FI-24240 SALO
Finland

LEDiL Inc.

228 West Page Street
Suite D
Sycamore IL 60178
USA

Ledil Optics Technology (Shenzhen) Co., Ltd.

405 , Block B
Casic Motor Building
Shenzhen 518057
P.R.CHINA

Local sales and technical support

[www.ledil.com/
where_to_buy](http://www.ledil.com/where_to_buy)

Shipping locations

Poznan, Poland
Hong Kong, China

Distribution Partners

[www.ledil.com/
where_to_buy](http://www.ledil.com/where_to_buy)