

STRADA-C2

Beam for area and street lighting such as parks and pedestrian walkways. Assembly with installation tape.

SPECIFICATION:

Dimensions	19.6 x 15.5
Height	5.9 mm
Fastening	tape, pin
ROHS compliant	yes ⓘ

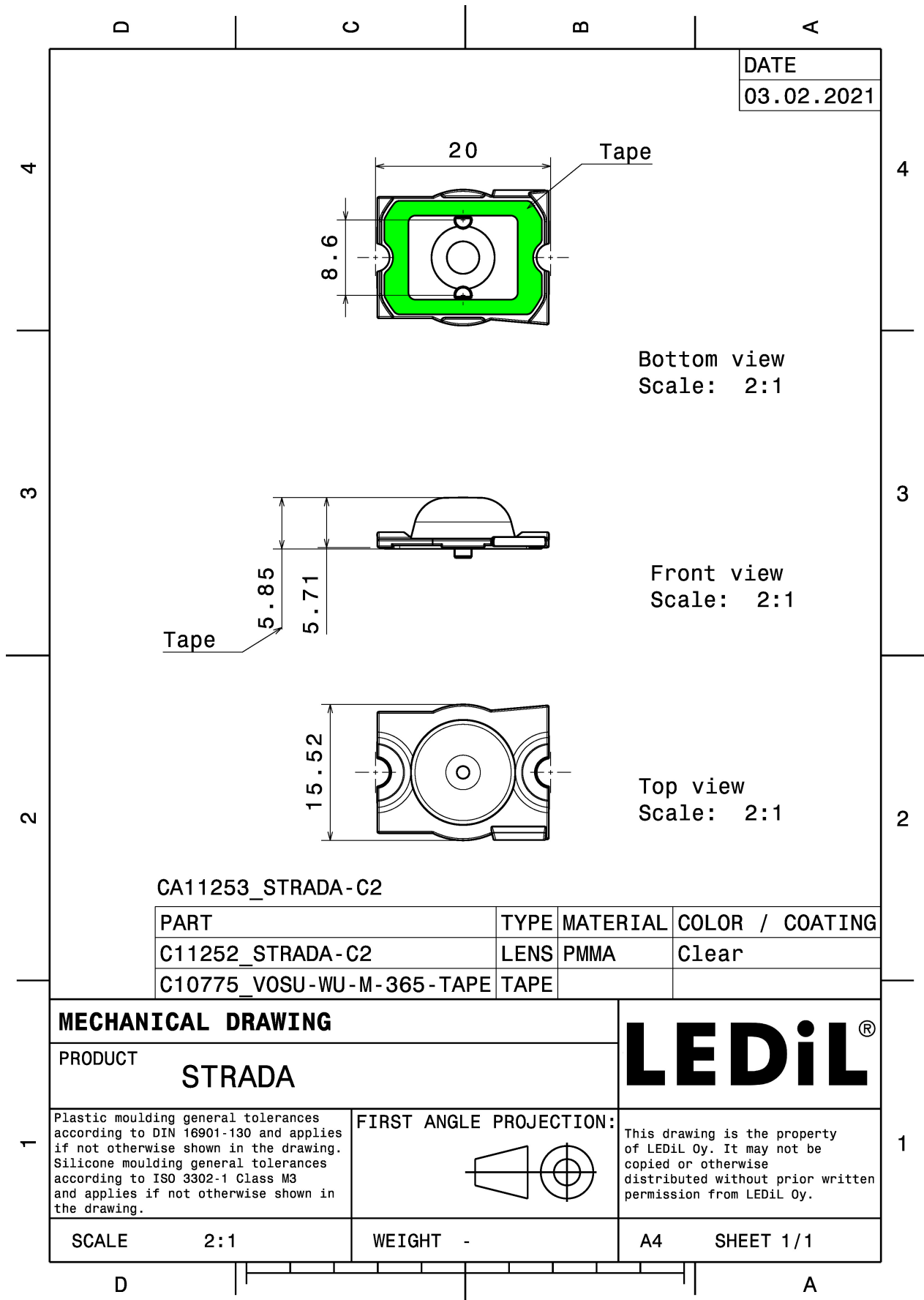


MATERIALS:

Component	Type	Material	Colour	Finish	Length (mm)
STRADA-C2	Single lens	PMMA	clear		
VOSU-WU-M-365-TAPE	Tape	Acrylic foam			

ORDERING INFORMATION:

Component		Qty in box	MOQ	MPQ	Box weight (kg)
CA11253_STRADA-C2	Single lens	4320	240	240	4.1
» Box size: 450 x 260 x 200 mm					

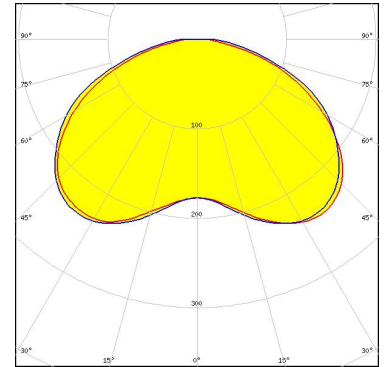


See also our general installation guide: www.ledil.com/installation_guide

OPTICAL RESULTS (MEASURED):



LED XB-D
FWHM / FWTM 135.0° / 175.0°
Efficiency 93 %
Peak intensity 0.3 cd/lm
LEDs/each optic 1
Light colour/type White
Required components:



Light distribution files



LED XP-E
FWHM / FWTM 124.0°
Efficiency 92 %
Peak intensity 0.3 cd/lm
LEDs/each optic 1
Light colour/type White
Required components:

Light distribution files



LED XP-G
FWHM / FWTM 132.0°
Efficiency 92 %
Peak intensity 0.2 cd/lm
LEDs/each optic 1
Light colour/type White
Required components:

Light distribution files

OPTICAL RESULTS (MEASURED):

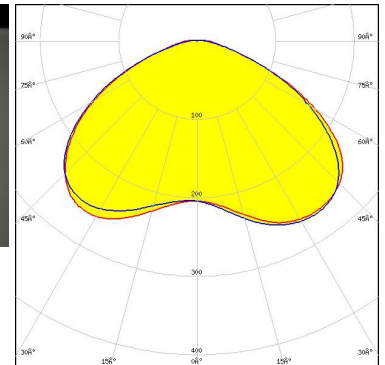


LED LUXEON A
FWHM / FWMTM 128.0°
Efficiency 92 %
LEDs/each optic 1
Light colour/type White
Required components:

Light distribution files



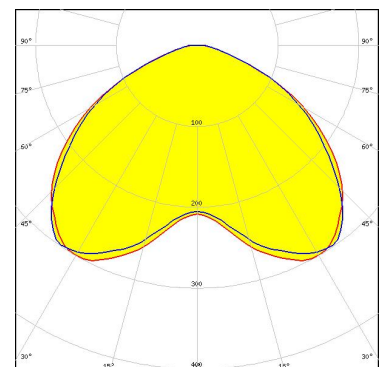
LED LUXEON R
FWHM / FWMTM 134.0° / 166.0°
Efficiency 93 %
Peak intensity 0.3 cd/lm
LEDs/each optic 1
Light colour/type White
Required components:



Light distribution files



LED LUXEON Rebel
FWHM / FWMTM 119.0°
Efficiency 92 %
Peak intensity 0.3 cd/lm
LEDs/each optic 1
Light colour/type White
Required components:



Light distribution files

OPTICAL RESULTS (MEASURED):

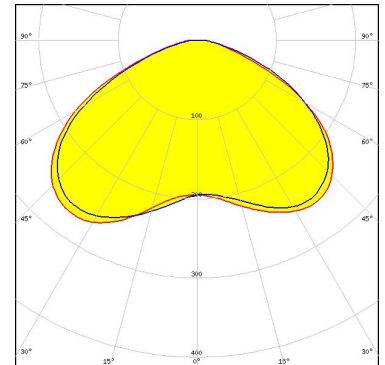


LED LUXEON Rebel ES
FWHM / FWTM 128.0° / 162.0°
Efficiency 92 %
Peak intensity 0.2 cd/lm
LEDs/each optic 1
Light colour/type White
Required components:

Light distribution files



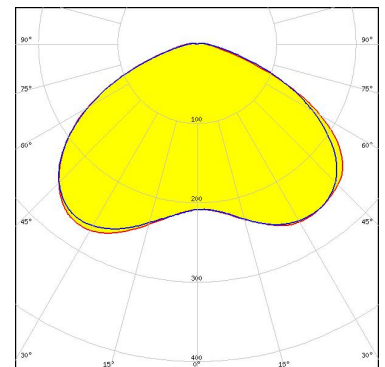
LED LUXEON T
FWHM / FWTM 136.0°
Efficiency 92 %
Peak intensity 0.3 cd/lm
LEDs/each optic 1
Light colour/type White
Required components:



Light distribution files



LED LUXEON TX
FWHM / FWTM 134.0° / 165.0°
Efficiency 94 %
Peak intensity 0.3 cd/lm
LEDs/each optic 1
Light colour/type White
Required components:

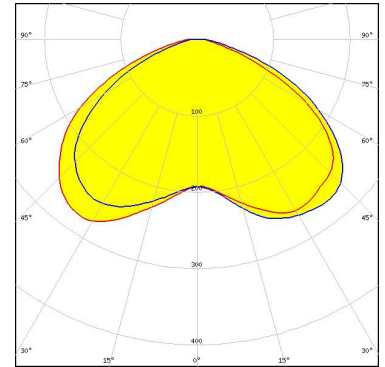


Light distribution files

OPTICAL RESULTS (MEASURED):



LED LUXEON Z ES
FWHM / FWTM 136.0° / 165.0°
Efficiency 93 %
Peak intensity 0.3 cd/lm
LEDs/each optic 1
Light colour/type White
Required components:



Light distribution files

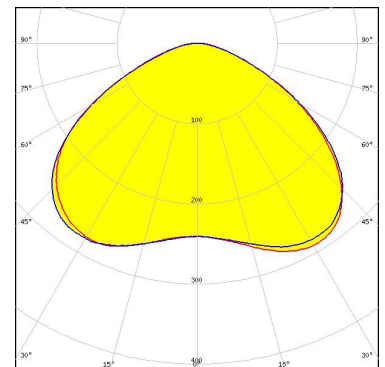


LED NCSxx19A
FWHM / FWTM 124.0°
Efficiency 92 %
LEDs/each optic 1
Light colour/type White
Required components:

Light distribution files



LED NVSW219D
FWHM / FWTM 126.0° / 161.0°
Efficiency 94 %
Peak intensity 0.3 cd/lm
LEDs/each optic 1
Light colour/type White
Required components:



Light distribution files

OPTICAL RESULTS (MEASURED):



LED NVSxx19A
FWHM / FWTM 124.0°
Efficiency 92 %
LEDs/each optic 1
Light colour/type White
Required components:

Light distribution files

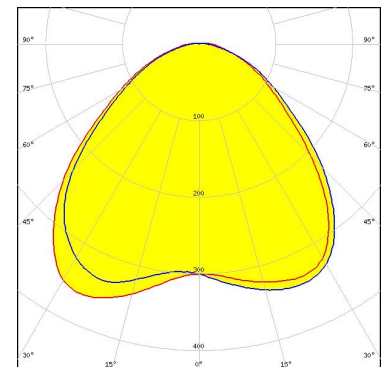


LED OSLOM SSL 150
FWHM / FWTM 92.0°
Efficiency 92 %
LEDs/each optic 1
Light colour/type White
Required components:

Light distribution files



LED OSLOM SSL 80
FWHM / FWTM 107.0° / 158.0°
Efficiency 93 %
Peak intensity 0.4 cd/lm
LEDs/each optic 1
Light colour/type White
Required components:



Light distribution files

OPTICAL RESULTS (MEASURED):

SHARP

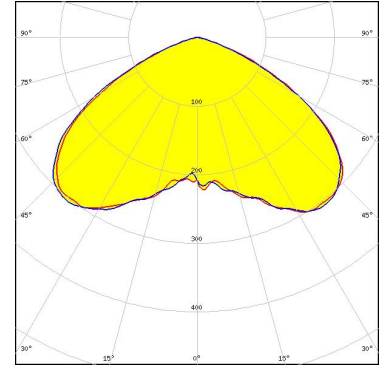
LED	Double Dome (GM2BB)
FWHM / FWTM	122.0°
Efficiency	92 %
LEDs/each optic	1
Light colour/type	White
Required components:	

Light distribution files

OPTICAL RESULTS (SIMULATED):



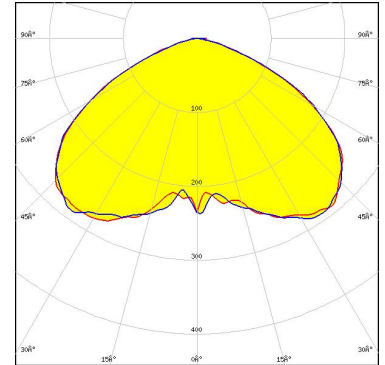
LED J Series 2835
FWHM / FWTM 123.0° / 145.0°
Efficiency 96 %
Peak intensity 0.3 cd/lm
LEDs/each optic 1
Light colour/type White
Required components:



Light distribution files



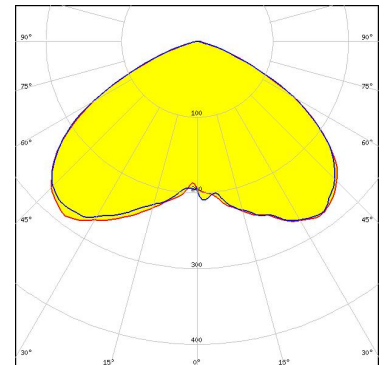
LED XHP35 HI
FWHM / FWTM 125.0° / 152.0°
Efficiency 96 %
Peak intensity 0.3 cd/lm
LEDs/each optic 1
Light colour/type White
Required components:



Light distribution files



LED XP-E2
FWHM / FWTM 122.0° / 146.0°
Efficiency 88 %
Peak intensity 0.3 cd/lm
LEDs/each optic 1
Light colour/type White
Required components:



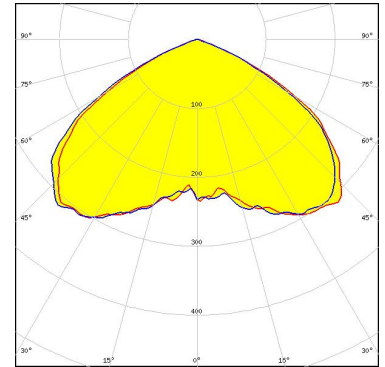
Protective plate, glass

Light distribution files

OPTICAL RESULTS (SIMULATED):



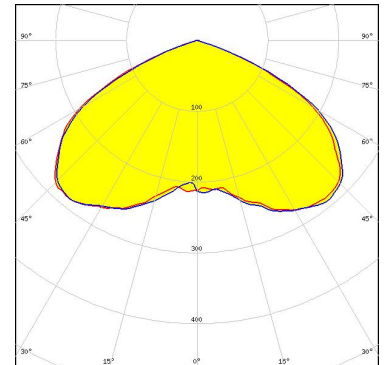
LED LUXEON H50-2
FWHM / FWTM 121.0° / 138.0°
Efficiency 92 %
Peak intensity 0.3 cd/lm
LEDs/each optic 1
Light colour/type White
Required components:



Light distribution files



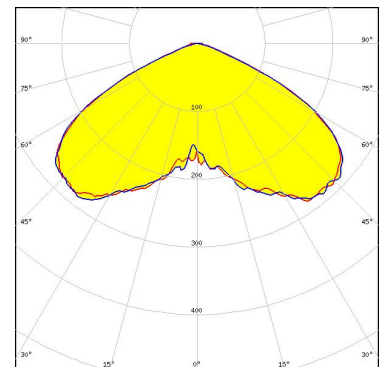
LED NVSW219F
FWHM / FWTM 127.0° / 142.0°
Efficiency 94 %
Peak intensity 0.3 cd/lm
LEDs/each optic 1
Light colour/type White
Required components:



Light distribution files



LED NVSxx19B/NVSxx19C
FWHM / FWTM 124.0° / 144.0°
Efficiency 94 %
LEDs/each optic 1
Light colour/type White
Required components:

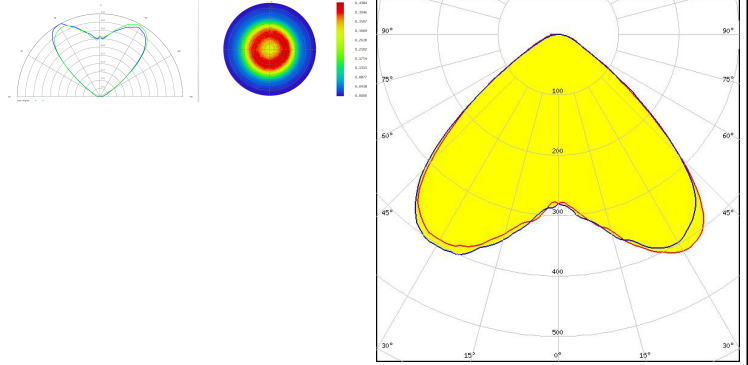


Light distribution files

OPTICAL RESULTS (SIMULATED):

OSRAM
Opto Semiconductors

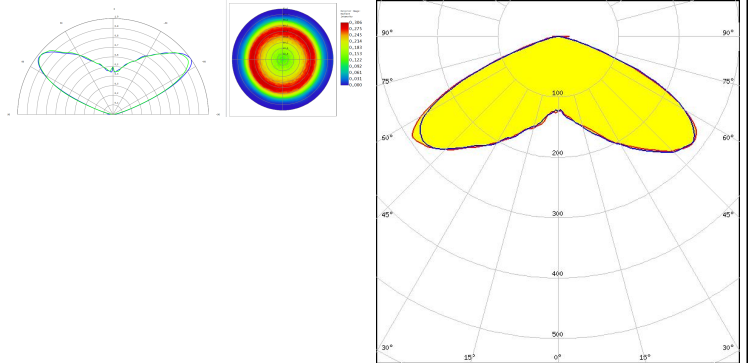
LED SFH 4715AS
FWHM / FWTM 100.0° / 128.0°
Efficiency 96 %
LEDs/each optic 1
Light colour/type IR
Required components:



Light distribution files

OSRAM
Opto Semiconductors

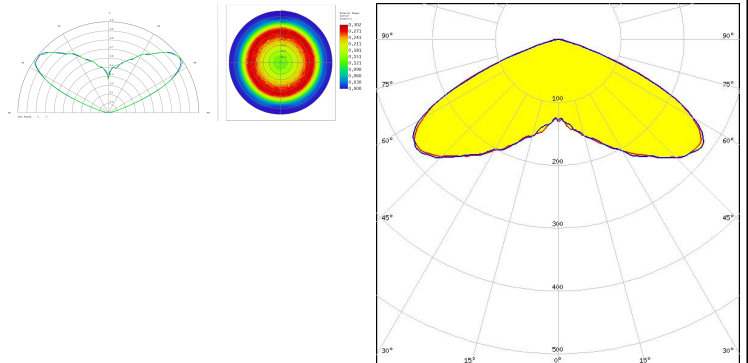
LED SFH 4716AS
FWHM / FWTM 134.0° / 153.0°
Efficiency 96 %
LEDs/each optic 1
Light colour/type IR
Required components:



Light distribution files


OSRAM
Opto Semiconductors

LED SFH 4716S
FWHM / FWTM 134.0° / 150.0°
Efficiency 96 %
LEDs/each optic 1
Light colour/type IR
Required components:



Light distribution files

OPTICAL RESULTS (SIMULATED):

 SEOL SEMICONDUCTOR	
LED	Z5
FWHM / FWTM	122.0°
Efficiency	%
LEDs/each optic	1
Light colour/type	White
Required components:	
Light distribution files	

GENERAL INFORMATION:

NOTE: The typical beam angle will be changed by different color, chip size and chip position tolerance. The typical total beam angle is the full angle measured where the luminous intensity is half of the peak value.

MATERIALS:

As part of our continuous research and improvement processes, and to ensure the best possible quality and availability of our products, LEDiL reserves the right to change material grades without notice.

PRODUCT DATA USER AGREEMENT AND DISCLAIMER:

The measured data in the provided downloadable LEDiL Product Datasheets and Mechanical 2D-Drawings is rounded and provided as reference for planning. LEDiL Oy's optical specifications have been verified by conducting performance testing of the products in accordance with the company's quality system. The reported data are averaged results of multiple measurements with typical variation. LEDiL Oy reserves the right to without prior notification make changes and improvements to its products.

LEDiL Oy assumes neither warranty, nor guarantee nor any other liability of any kind for the contents and correctness of the provided data. The provided data has been generated with highest diligence but the provided data may in reality not represent the complete possible variation range of all intrinsic parameters. Therefore, in certain cases a deviation from the provided data could occur.

LEDiL Oy reserves the right to undertake technical changes of its products without further notification which could lead to changes in the provided data. LEDiL Oy assumes no liability of any kind for the possible deviation from any provided data or any other damage resulting from the usage of the provided data.

The user agrees to this disclaimer and user agreement with the download or usage of the provided files.

LEDiL Oy

Joensuunkatu 7
FI-24240 SALO
Finland

LEDiL Inc.

228 West Page Street
Suite D
Sycamore IL 60178
USA

Ledil Optics Technology (Shenzhen) Co., Ltd.

405 , Block B
Casic Motor Building
Shenzhen 518057
P.R.CHINA

Local sales and technical support

[www.ledil.com/
where_to_buy](http://www.ledil.com/where_to_buy)

Shipping locations

Poznan, Poland
Hong Kong, China

Distribution Partners

[www.ledil.com/
where_to_buy](http://www.ledil.com/where_to_buy)