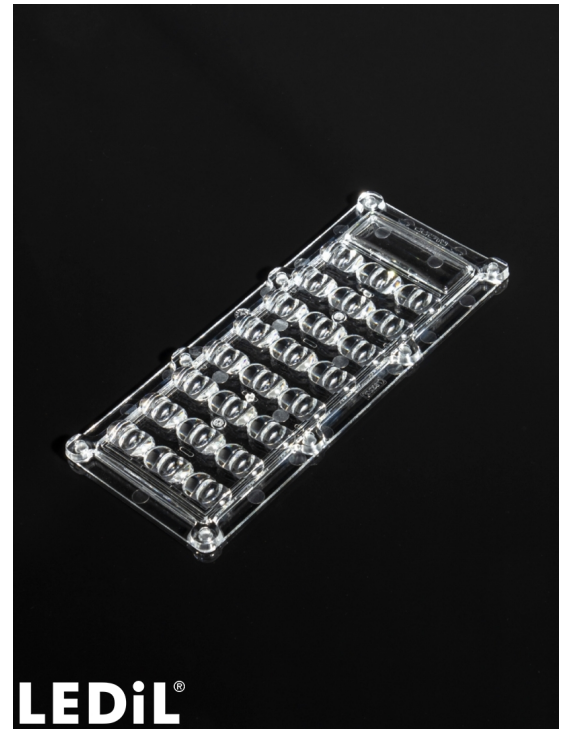


## STRADA-IP-24-T2-M-NH-PC

IESNA Type II (medium) beam with excellent backlight control, illuminance uniformity and cutoff. Variant without screw holes for glue fastening and without a silicone seal. Made from PC.

### SPECIFICATION:

Dimensions	173.0 x 71.4
Height	9.1 mm
Fastening	glue, pin
ROHS compliant	yes ⓘ

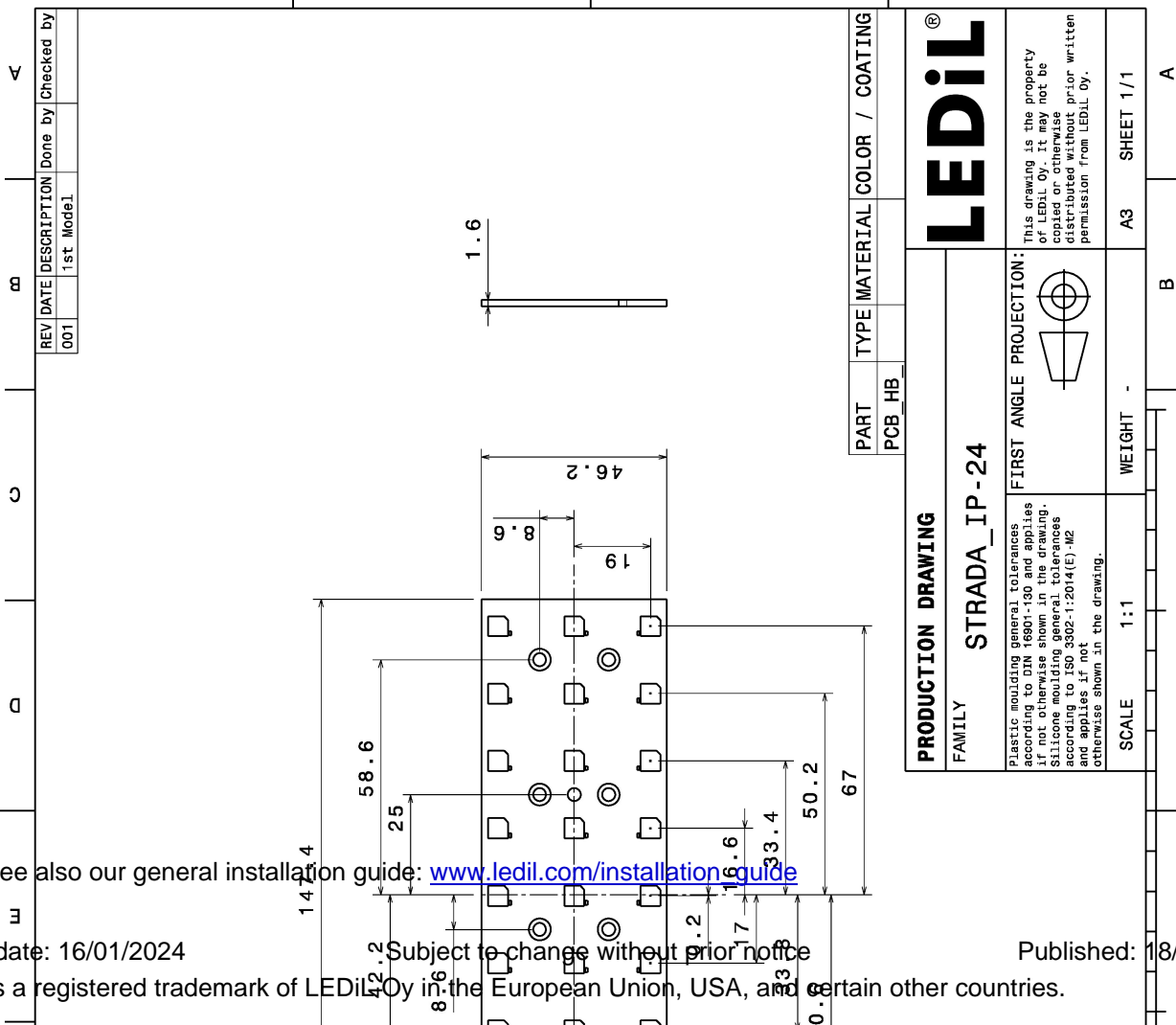
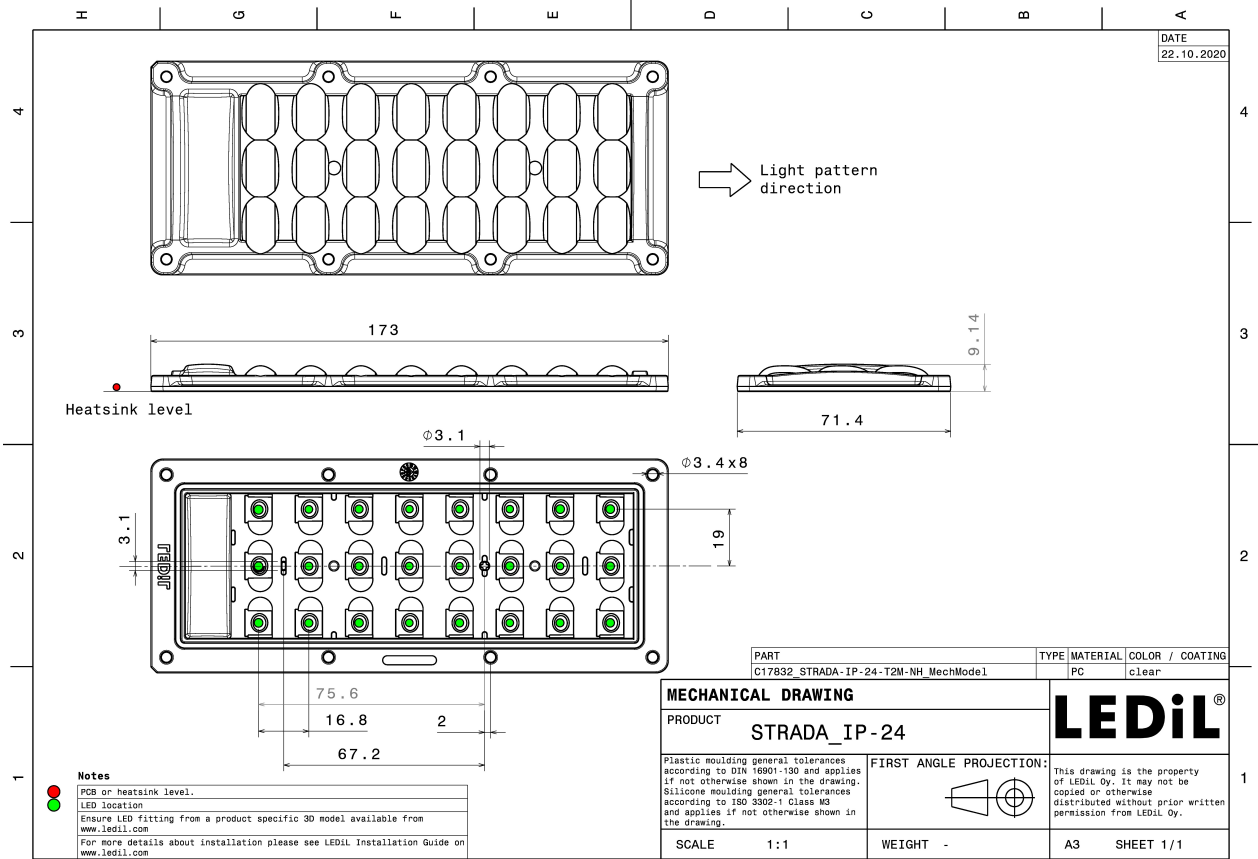


### MATERIALS:

Component	Type	Material	Colour	Finish	Length
STRADA-IP-24-T2-M-NH-PC	Multi-lens	PC	clear		173.0

### ORDERING INFORMATION:

Component	Qty in box	MOQ	MPQ	Box weight (kg)
C17832_STRADA-IP-24-T2-M-NH-PC » Box size: 476 x 273 x 247 mm	120	5040	5040	6.8

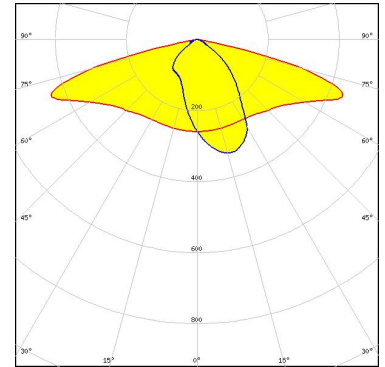


See also our general installation guide: [www.ledil.com/installation-guide](http://www.ledil.com/installation-guide)

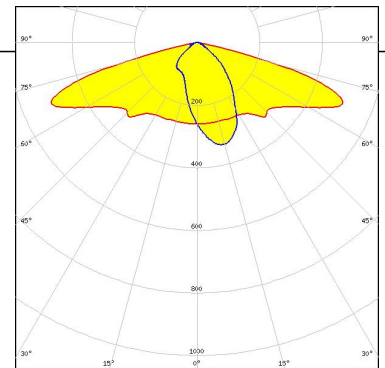
#### OPTICAL RESULTS (MEASURED):



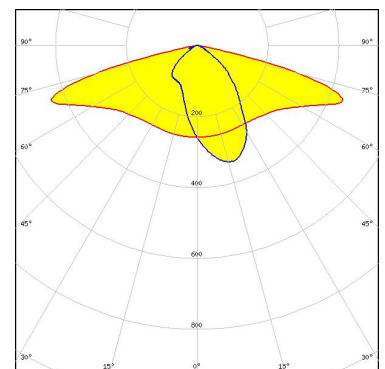
LED LIGHT ENGINE STRADA-IP 24 LEDs 147.4 x 46.2 x 1.5  
FWHM / FWTM Asymmetric  
Efficiency 89 %  
Peak intensity 0.6 cd/lm  
LEDs/each optic 1  
Light colour/type White  
Required components:



LED LUXEON 5050 Square LES  
FWHM / FWTM Asymmetric  
Efficiency 88 %  
Peak intensity 0.6 cd/lm  
LEDs/each optic 1  
Light colour/type White  
Required components:



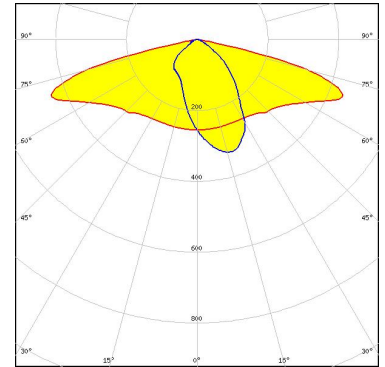
LED LUXEON XR-5050 HE (L225-xxxx024MLU010)  
FWHM / FWTM Asymmetric  
Efficiency 89 %  
Peak intensity 0.6 cd/lm  
LEDs/each optic 1  
Light colour/type White  
Required components:



#### OPTICAL RESULTS (MEASURED):

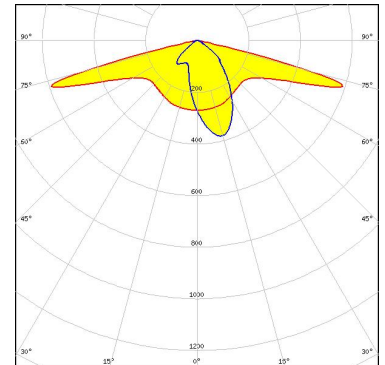
**OSRAM**  
Opto Semiconductors

LED OSCONIQ S 5050  
FWHM / FWTM Asymmetric  
Efficiency 88 %  
Peak intensity 0.5 cd/lm  
LEDs/each optic 1  
Light colour/type White  
Required components:



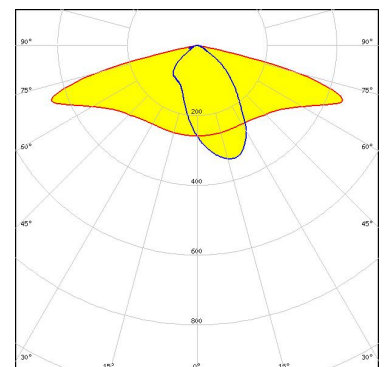
**OSRAM**  
Opto Semiconductors

LED OSLOM Square CSSRM2/CSSRM3  
FWHM / FWTM Asymmetric  
Efficiency 89 %  
Peak intensity 0.8 cd/lm  
LEDs/each optic 1  
Light colour/type White  
Required components:



**SAMSUNG**

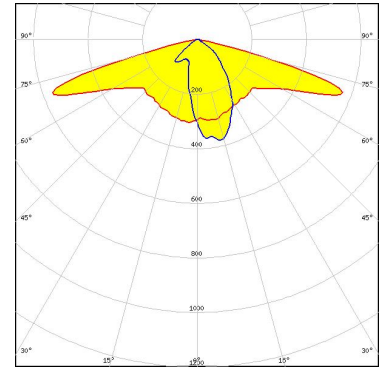
LED HiLOM RM24 ZP (LH502D)  
FWHM / FWTM Asymmetric  
Efficiency 90 %  
Peak intensity 0.6 cd/lm  
LEDs/each optic 1  
Light colour/type White  
Required components:



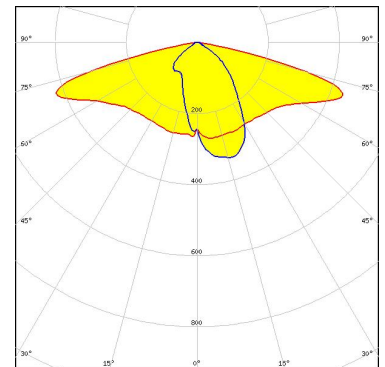
#### OPTICAL RESULTS (SIMULATED):



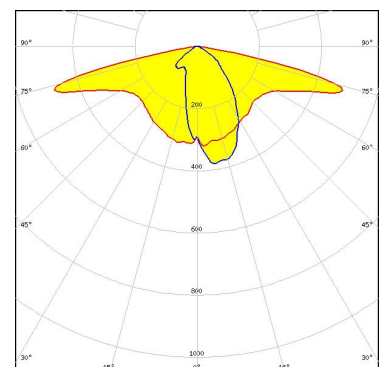
LED J Series 3030  
 FWHM / FWTM Asymmetric  
 Efficiency 88 %  
 Peak intensity 0.6 cd/lm  
 LEDs/each optic 1  
 Light colour/type White  
 Required components:



LED J Series 5050C 6V E Class  
 FWHM / FWTM Asymmetric  
 Efficiency 87 %  
 Peak intensity 0.5 cd/lm  
 LEDs/each optic 1  
 Light colour/type White  
 Required components:



LED XHP35 HI  
 FWHM / FWTM Asymmetric  
 Efficiency 89 %  
 Peak intensity 0.6 cd/lm  
 LEDs/each optic 1  
 Light colour/type White  
 Required components:

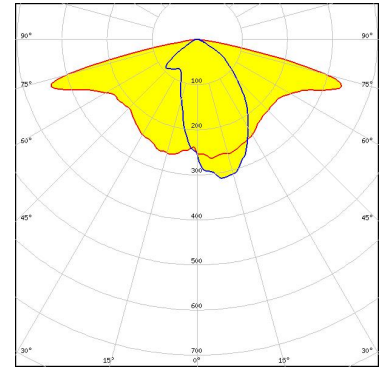


#### OPTICAL RESULTS (SIMULATED):

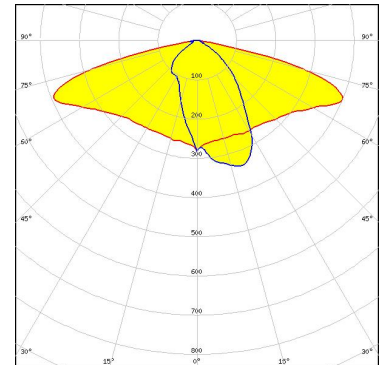


LED XP-G3  
 FWHM / FWTM Asymmetric  
 Efficiency 76 %  
 Peak intensity 0.4 cd/lm  
 LEDs/each optic 1  
 Light colour/type White  
 Required components:

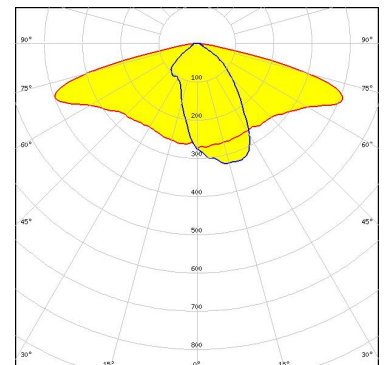
Protective plate, glass



LED RecLED 147x47mm 5800lm 7x0 5050 STRADA-IP-24 G2  
 FWHM / FWTM Asymmetric  
 Efficiency 87 %  
 Peak intensity 0.5 cd/lm  
 LEDs/each optic 1  
 Light colour/type White  
 Required components:



LED NFMW48xA  
 FWHM / FWTM Asymmetric  
 Efficiency 87 %  
 Peak intensity 0.5 cd/lm  
 LEDs/each optic 1  
 Light colour/type White  
 Required components:

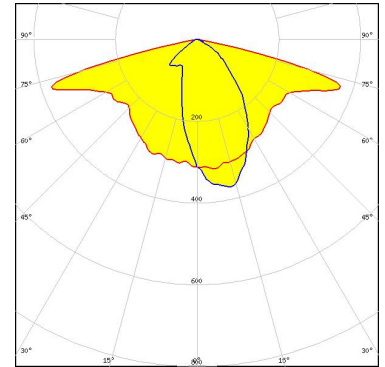


#### OPTICAL RESULTS (SIMULATED):

**OSRAM**  
Opto Semiconductors

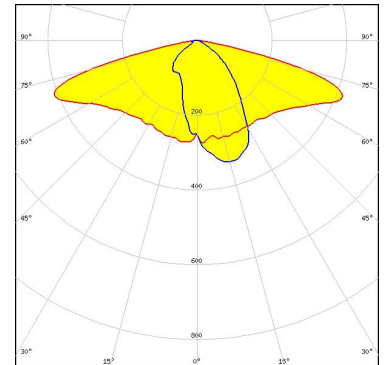
LED OSLON Square CSSRM2/CSSRM3  
FWHM / FWTM Asymmetric  
Efficiency 79 %  
Peak intensity 0.4 cd/lm  
LEDs/each optic 1  
Light colour/type White  
Required components:

Protective plate, glass



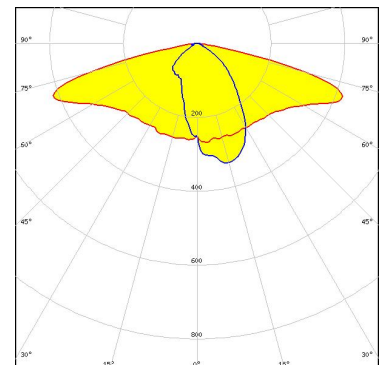
**SAMSUNG**

LED LH502C  
FWHM / FWTM Asymmetric  
Efficiency 87 %  
Peak intensity 0.5 cd/lm  
LEDs/each optic 1  
Light colour/type White  
Required components:



**SAMSUNG**

LED LH502D  
FWHM / FWTM Asymmetric  
Efficiency 87 %  
Peak intensity 0.5 cd/lm  
LEDs/each optic 1  
Light colour/type White  
Required components:



#### GENERAL INFORMATION:

NOTE: The typical beam angle will be changed by different color, chip size and chip position tolerance. The typical total beam angle is the full angle measured where the luminous intensity is half of the peak value.

#### MATERIALS:

As part of our continuous research and improvement processes, and to ensure the best possible quality and availability of our products, LEDiL reserves the right to change material grades without notice.

#### PRODUCT DATA USER AGREEMENT AND DISCLAIMER:

The measured data in the provided downloadable LEDiL Product Datasheets and Mechanical 2D-Drawings is rounded and provided as reference for planning. LEDiL Oy's optical specifications have been verified by conducting performance testing of the products in accordance with the company's quality system. The reported data are averaged results of multiple measurements with typical variation. LEDiL Oy reserves the right to without prior notification make changes and improvements to its products.

LEDiL Oy assumes neither warranty, nor guarantee nor any other liability of any kind for the contents and correctness of the provided data. The provided data has been generated with highest diligence but the provided data may in reality not represent the complete possible variation range of all intrinsic parameters. Therefore, in certain cases a deviation from the provided data could occur.

LEDiL Oy reserves the right to undertake technical changes of its products without further notification which could lead to changes in the provided data. LEDiL Oy assumes no liability of any kind for the possible deviation from any provided data or any other damage resulting from the usage of the provided data.

The user agrees to this disclaimer and user agreement with the download or usage of the provided files.

#### LEDiL Oy

Joensuunkatu 13  
FI-24240 SALO  
Finland

#### LEDiL Inc.

228 West Page Street  
Suite D  
Sycamore IL 60178  
USA

#### Ledil Optics Technology (Shenzhen) Co., Ltd.

# 405 , Block B  
Casic Motor Building  
Shenzhen 518057  
P.R.CHINA

#### Local sales and technical support

[www.ledil.com/  
where\\_to\\_buy](http://www.ledil.com/where_to_buy)

#### Shipping locations

Salo, Finland  
Hong Kong, China

#### Distribution Partners

[www.ledil.com/  
where\\_to\\_buy](http://www.ledil.com/where_to_buy)