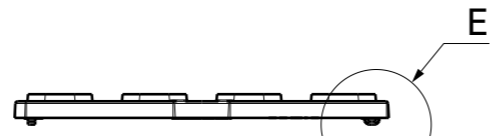
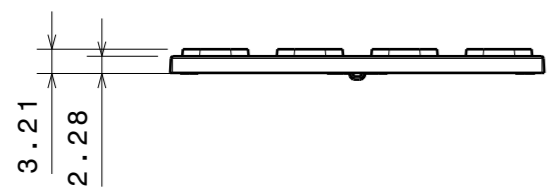
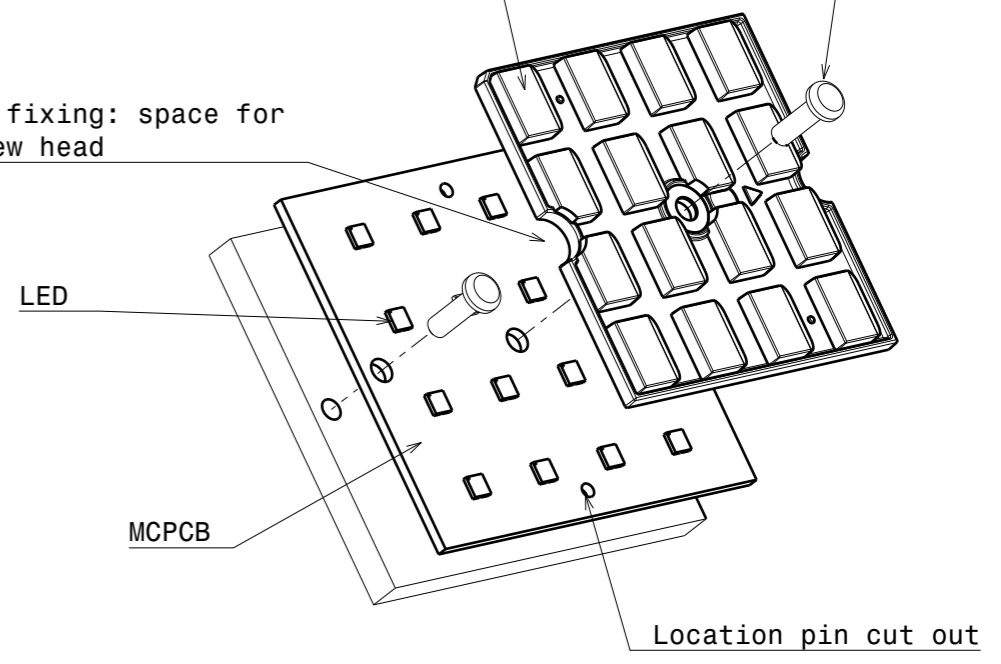


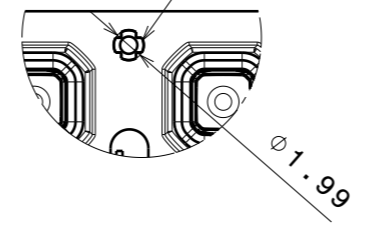
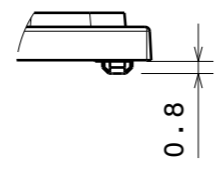
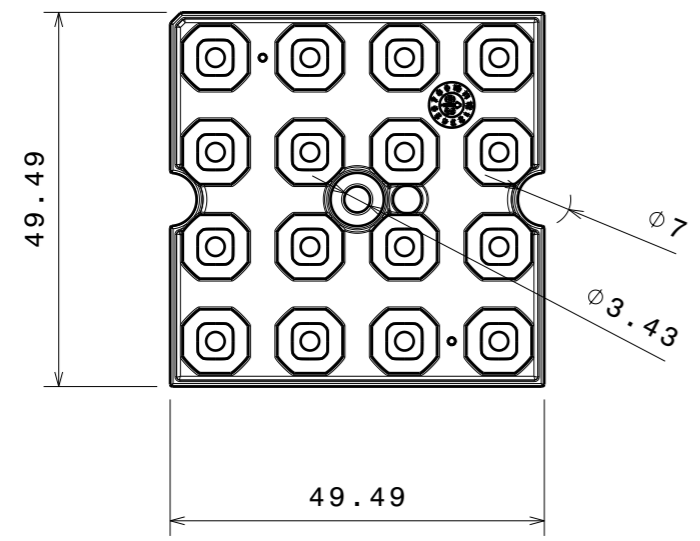
LENS: Recommended screw M3 for fixing  
Use washer with screw if possible

STRADELLA-16 lens

PCB fixing: space for screw head



Hole to PCB: one round min. dia 2mm, other to be elongated.



Det E

Det D  
Location Pin

PART	TYPE	MATERIAL	COLOR / COATING
C16800_STRADELLA-16-HB-M2	LENS	PMMA	CLEAR

<b>MECHANICAL DRAWING</b>	
PRODUCT <b>STRADELLA</b>	
Plastic moulding general tolerances according to DIN 16901-130 and applies if not otherwise shown in the drawing. Silicone moulding general tolerances according to ISO 3302-1 Class M3 and applies if not otherwise shown in the drawing.	FIRST ANGLE PROJECTION: 
SCALE 1:1	WEIGHT 4.7g

**LEDiL**®

This drawing is the property of LEDiL Oy. It may not be reproduced, copied or communicated without a written agreement with LEDiL Oy.

A3 SHEET 1/1

**Notes**

1	PCB or heatsink level.
2	LED location.
3	Ensure LED fitting from a product specific 3D model available from <a href="http://www.ledil.com">www.ledil.com</a> .