

## SURI-RS

~6° real spot beam. Assembly with holder and installation tape.

### SPECIFICATION:

|                |           |
|----------------|-----------|
| Dimensions     | Ø 37.8    |
| Height         | 24 mm     |
| Fastening      | tape, pin |
| ROHS compliant | yes ⓘ     |

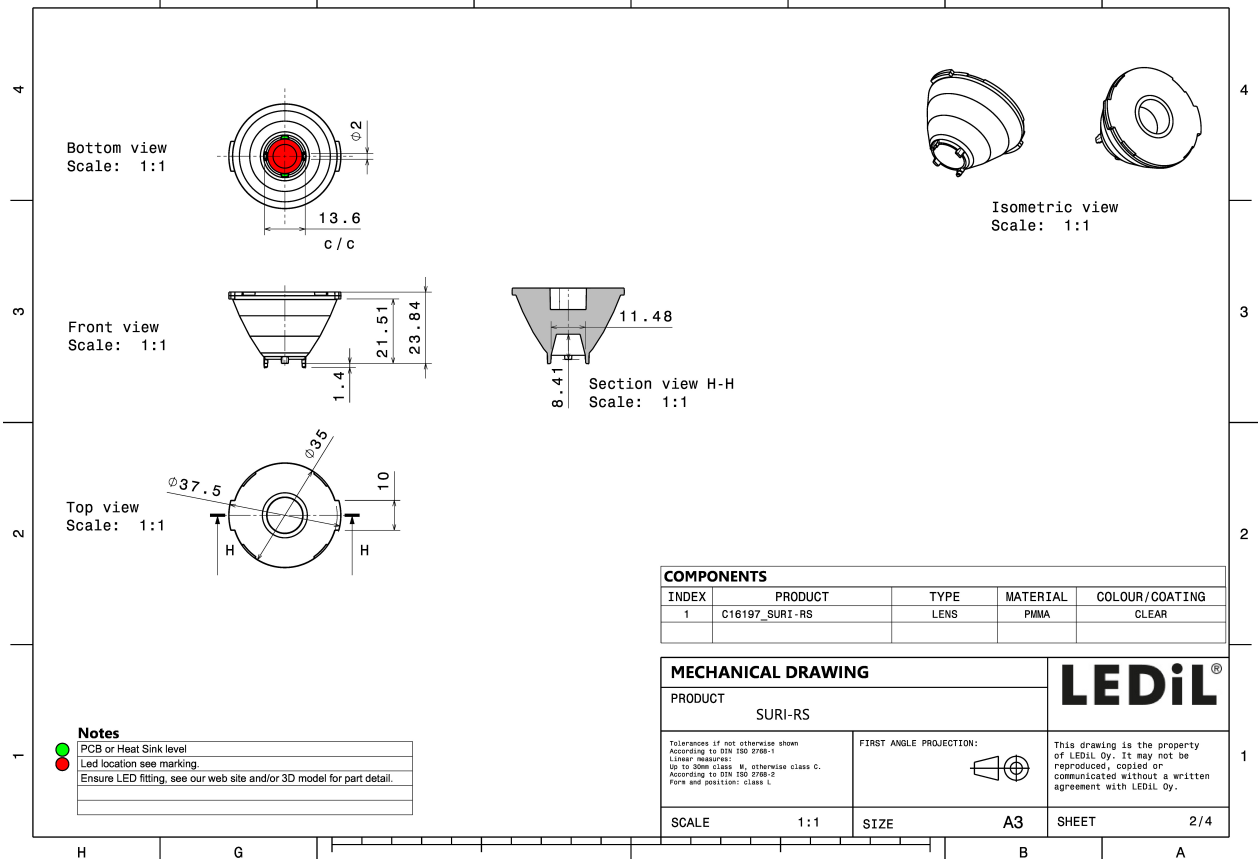
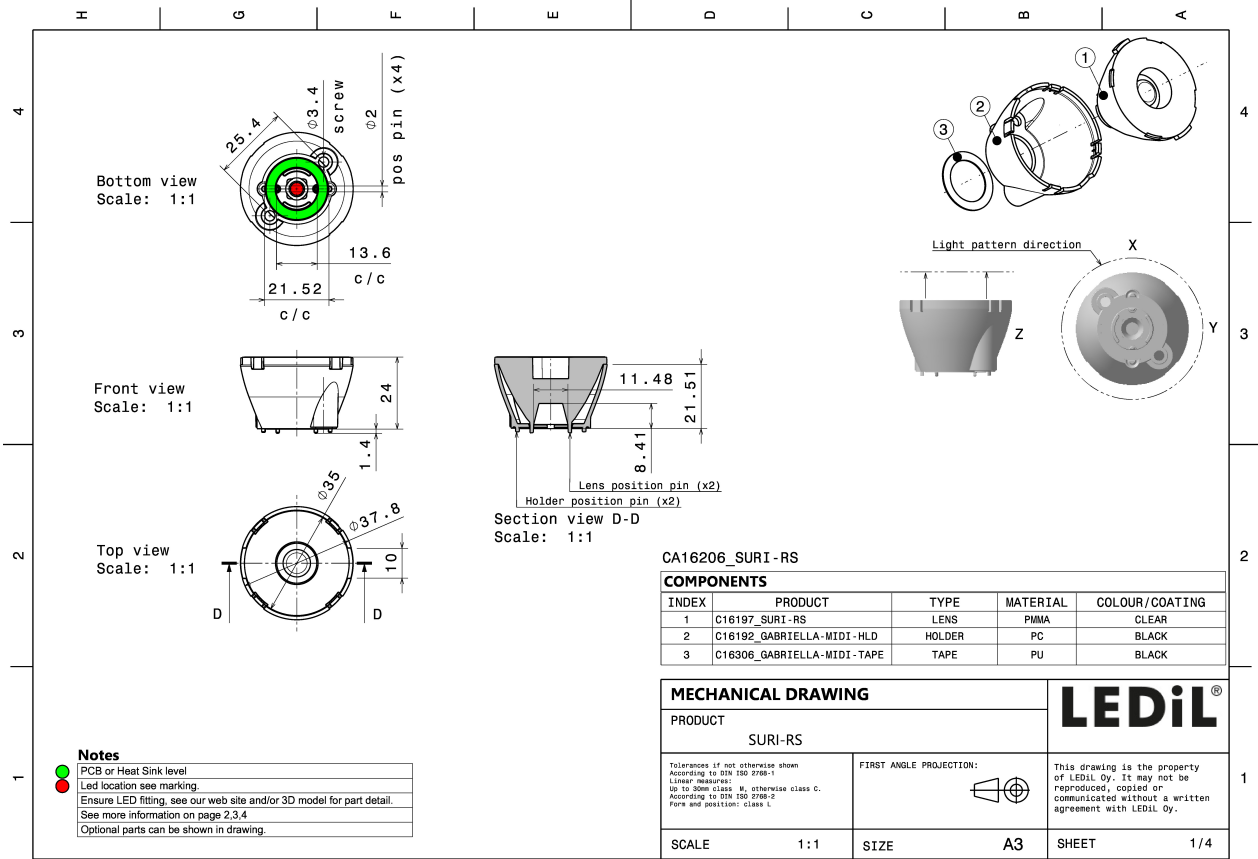


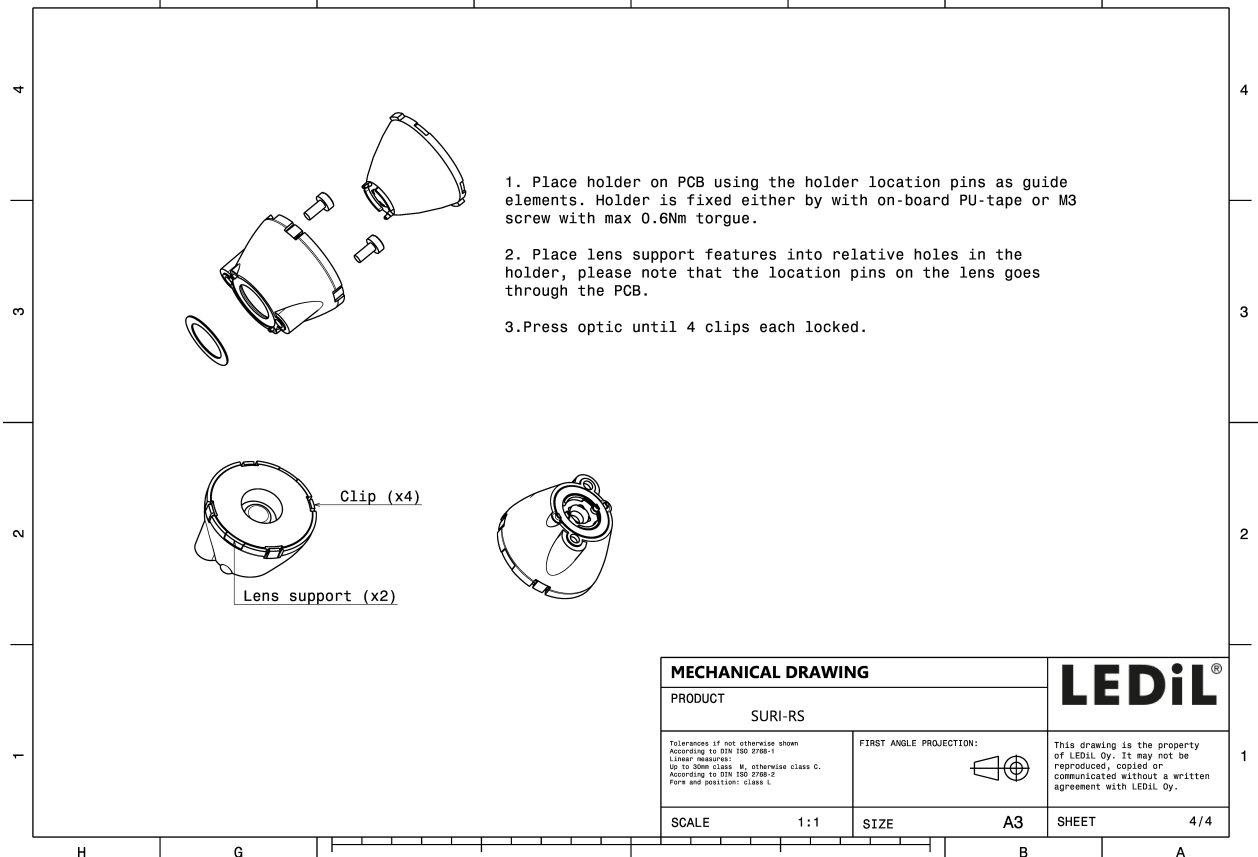
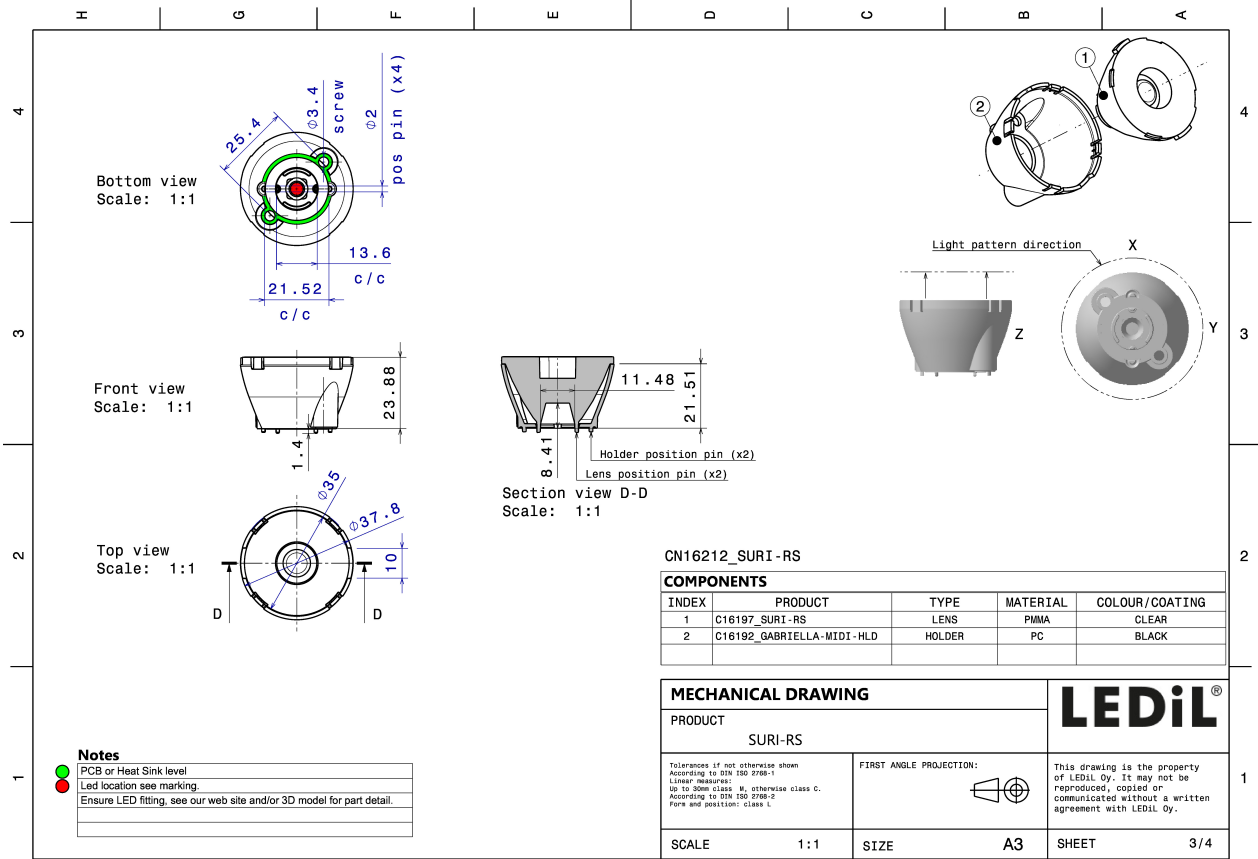
### MATERIALS:

| Component          | Type        | Material | Colour | Finish | Length (mm) |
|--------------------|-------------|----------|--------|--------|-------------|
| SURI-RS            | Single lens | PMMA     | clear  |        |             |
| GABRIELLA-MIDI-HLD | Assembly    | PC       | black  |        |             |

### ORDERING INFORMATION:

| Component   | Qty in box | MOQ | MPQ | Box weight (kg) |
|---|------------|-----|-----|-----------------|
| CA16206_SURI-RS<br>» Box size: 476 x 273 x 292 mm | 500        | 100 | 50  | 11.7            |



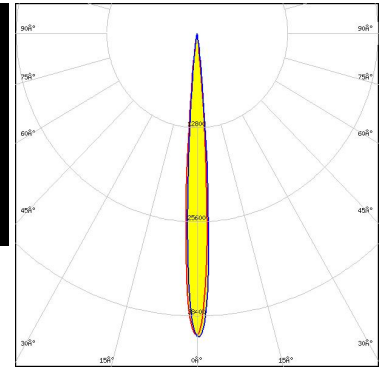
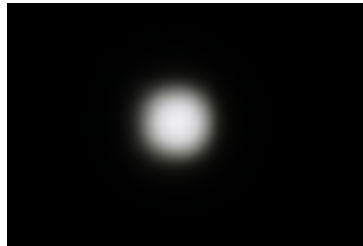


See also our general installation guide: [www.ledil.com/installation\\_guide](http://www.ledil.com/installation_guide)

#### OPTICAL RESULTS (MEASURED):



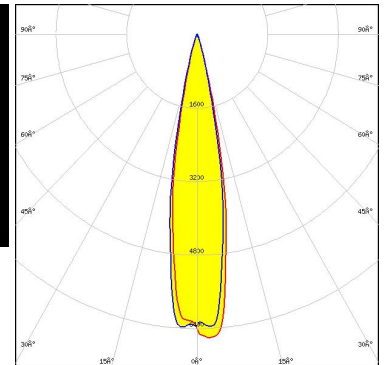
**LED** XHP35 HI  
**FWHM / FWTM** 8.0° / 13.0°  
**Efficiency** 91 %  
**Peak intensity** 41 cd/lm  
**LEDs/each optic** 1  
**Light colour/type** White  
**Required components:**



Light distribution files



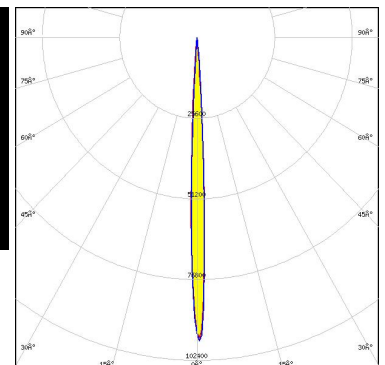
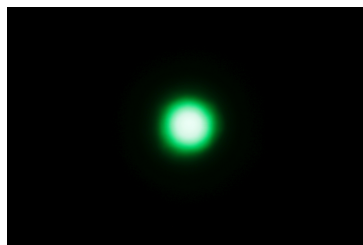
**LED** XHP70.2  
**FWHM / FWTM** 20.0° / 32.0°  
**Efficiency** 87 %  
**Peak intensity** 6.6 cd/lm  
**LEDs/each optic** 1  
**Light colour/type** White  
**Required components:**



Light distribution files



**LED** XP-E2  
**FWHM / FWTM** 5.0° / 9.0°  
**Efficiency** 93 %  
**Peak intensity** 101 cd/lm  
**LEDs/each optic** 1  
**Light colour/type** Green  
**Required components:**

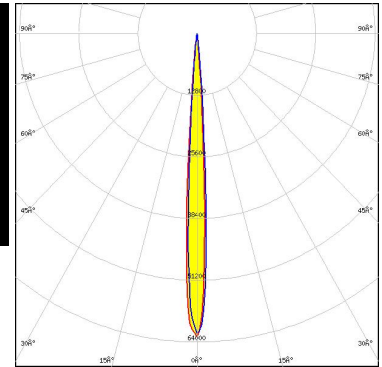


Light distribution files

### OPTICAL RESULTS (MEASURED):



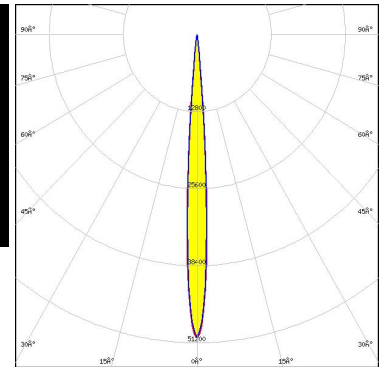
LED XP-G2  
 FWHM / FWTM 7.0° / 11.0°  
 Efficiency 94 %  
 Peak intensity 63.1 cd/lm  
 LEDs/each optic 1  
 Light colour/type White  
 Required components:



Light distribution files



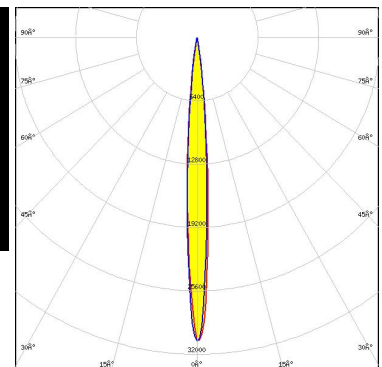
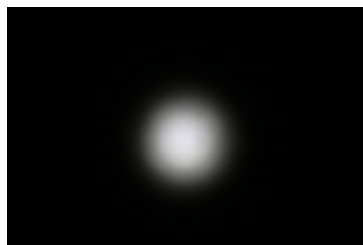
LED XP-G4  
 FWHM / FWTM 7.0° / 13.0°  
 Efficiency 94 %  
 Peak intensity 50.4 cd/lm  
 LEDs/each optic 1  
 Light colour/type White  
 Required components:



Light distribution files



LED XP-L HI  
 FWHM / FWTM 8.0° / 17.0°  
 Efficiency 90 %  
 Peak intensity 30.6 cd/lm  
 LEDs/each optic 1  
 Light colour/type White  
 Required components:



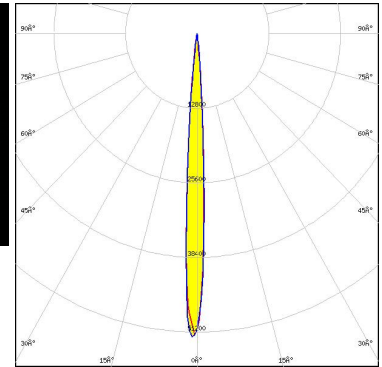
Protective plate, glass

Light distribution files

### OPTICAL RESULTS (MEASURED):



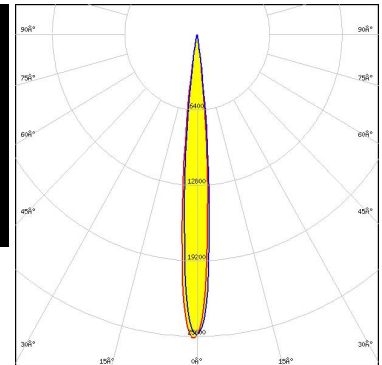
LED XP-L HI  
 FWHM / FWTM 7.0° / 12.0°  
 Efficiency 91 %  
 Peak intensity 52.4 cd/lm  
 LEDs/each optic 1  
 Light colour/type White  
 Required components:



Light distribution files



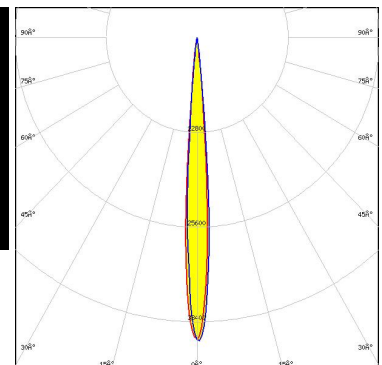
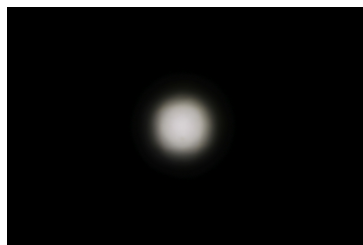
LED LUXEON V  
 FWHM / FWTM 10.0° / 17.0°  
 Efficiency 88 %  
 Peak intensity 26 cd/lm  
 LEDs/each optic 1  
 Light colour/type White  
 Required components:



Light distribution files



LED NVSW219F  
 FWHM / FWTM 8.0° / 13.0°  
 Efficiency 91 %  
 Peak intensity 41 cd/lm  
 LEDs/each optic 1  
 Light colour/type White  
 Required components:

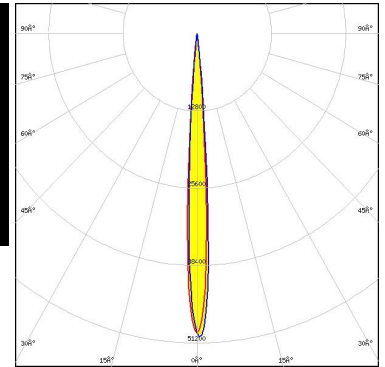


Light distribution files

#### OPTICAL RESULTS (MEASURED):



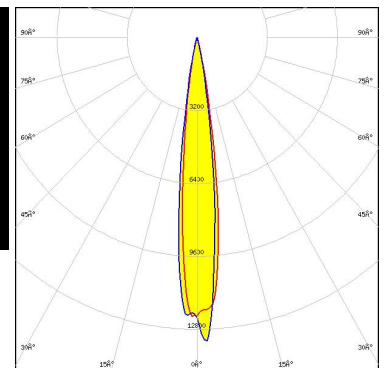
LED NVSW719AC  
 FWHM / FWTM 7.0° / 12.0°  
 Efficiency 91 %  
 Peak intensity 50.5 cd/lm  
 LEDs/each optic 1  
 Light colour/type White  
 Required components:



Light distribution files



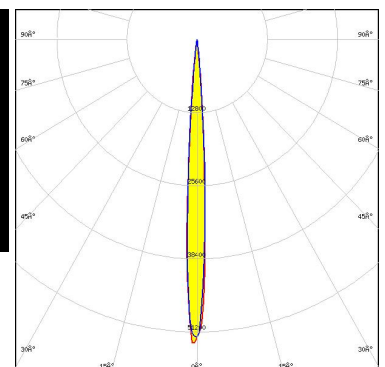
LED Duris S8  
 FWHM / FWTM 14.0° / 24.0°  
 Efficiency 90 %  
 Peak intensity 13 cd/lm  
 LEDs/each optic 1  
 Light colour/type White  
 Required components:



Light distribution files



LED OSLON Square CSSRM2/CSSRM3  
 FWHM / FWTM 7.0° / 12.0°  
 Efficiency 91 %  
 Peak intensity 53 cd/lm  
 LEDs/each optic 1  
 Light colour/type White  
 Required components:

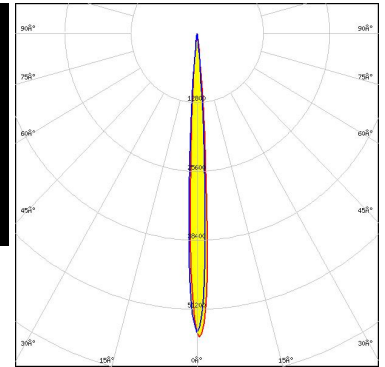


Light distribution files

### OPTICAL RESULTS (MEASURED):

**OSRAM**  
Opto Semiconductors

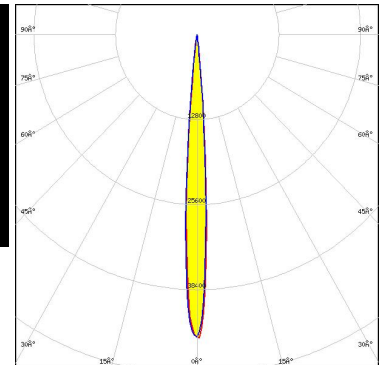
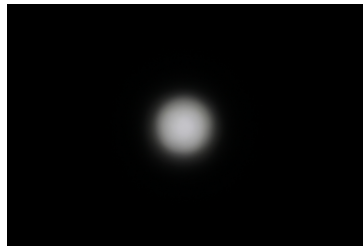
LED OSLON Square EC  
FWHM / FWTM 6.0° / 12.0°  
Efficiency 90 %  
Peak intensity 56 cd/lm  
LEDs/each optic 1  
Light colour/type White  
Required components:



Light distribution files

**SAMSUNG**

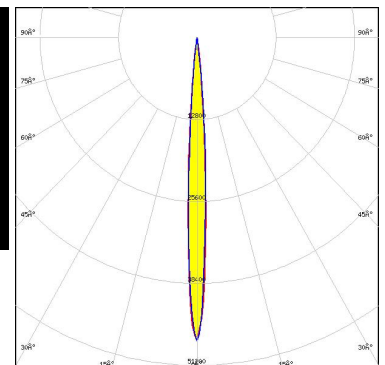
LED LH351B  
FWHM / FWTM 8.0° / 13.0°  
Efficiency 93 %  
Peak intensity 45.6 cd/lm  
LEDs/each optic 1  
Light colour/type White  
Required components:



Light distribution files

**SAMSUNG**

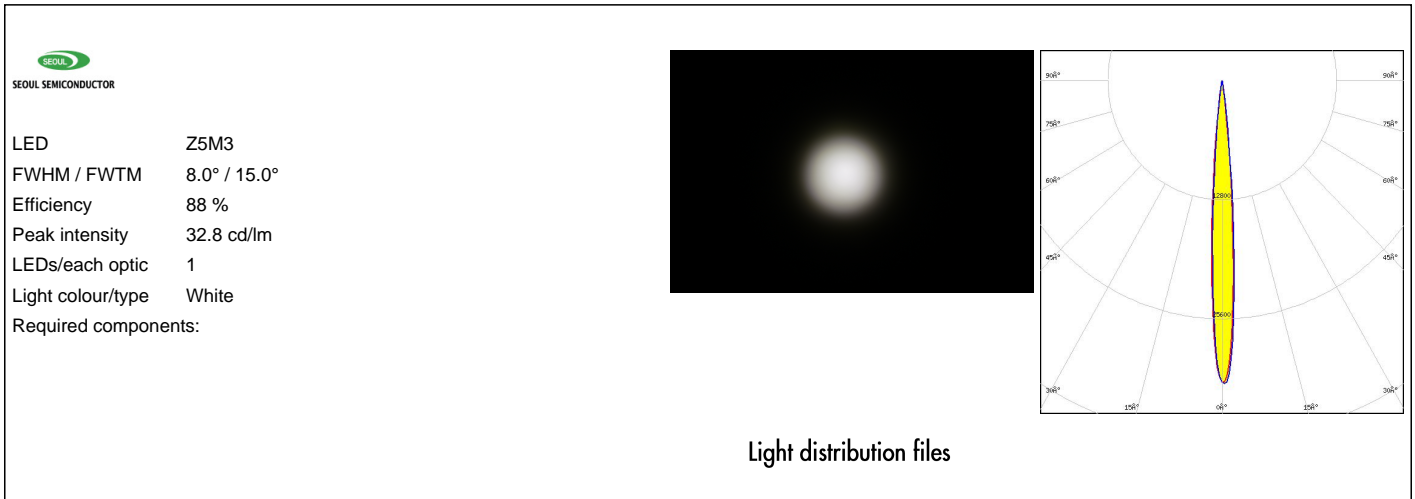
LED LM302A  
FWHM / FWTM 7.0° / 13.0°  
Efficiency 92 %  
Peak intensity 47 cd/lm  
LEDs/each optic 1  
Light colour/type White  
Required components:



Light distribution files



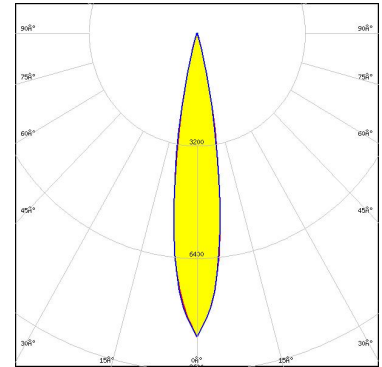
## OPTICAL RESULTS (MEASURED):



#### OPTICAL RESULTS (SIMULATED):



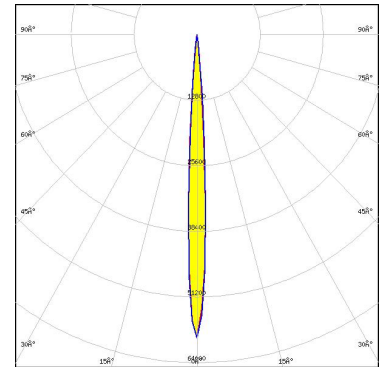
**LED** MHD-E/G  
**FWHM / FWTM** 18.0° / 30.0°  
**Efficiency** 91 %  
**Peak intensity** 8.6 cd/lm  
**LEDs/each optic** 1  
**Light colour/type** White  
**Required components:**



Light distribution files



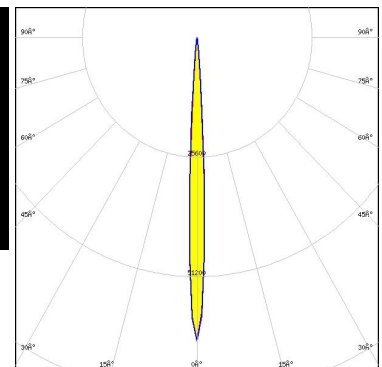
**LED** XB-H  
**FWHM / FWTM** 6.0° / 12.0°  
**Efficiency** 90 %  
**Peak intensity** 59.2 cd/lm  
**LEDs/each optic** 1  
**Light colour/type** White  
**Required components:**



Light distribution files



**LED** XD16  
**FWHM / FWTM** 5.9° / 11.0°  
**Efficiency** 89 %  
**Peak intensity** 65 cd/lm  
**LEDs/each optic** 1  
**Light colour/type** White  
**Required components:**

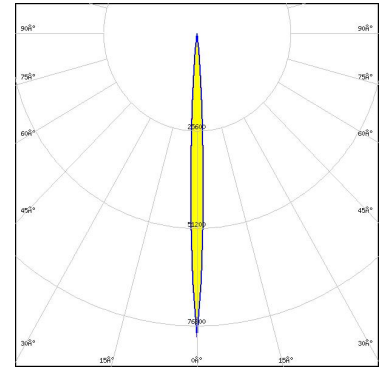


Light distribution files

### OPTICAL RESULTS (SIMULATED):



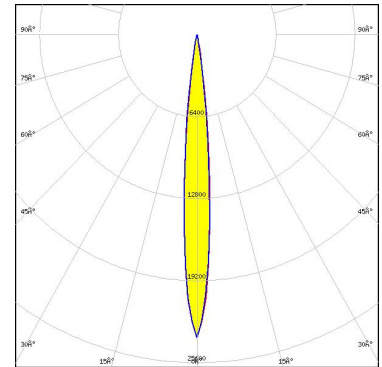
LED XE-G  
 FWHM / FWTM 6.0° / 10.0°  
 Efficiency 89 %  
 Peak intensity 79.7 cd/lm  
 LEDs/each optic 1  
 Light colour/type White  
 Required components:



Light distribution files



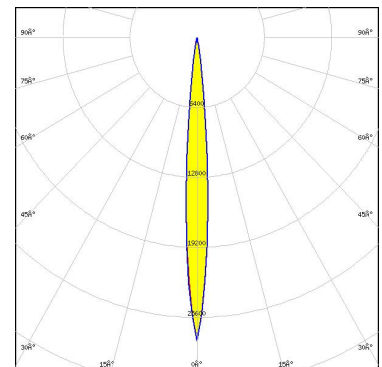
LED XHP35 HD  
 FWHM / FWTM 10.0° / 18.0°  
 Efficiency 91 %  
 Peak intensity 23.7 cd/lm  
 LEDs/each optic 1  
 Light colour/type White  
 Required components:



Light distribution files



LED XHP35.2 HD  
 FWHM / FWTM 8.0° / 18.0°  
 Efficiency 87 %  
 Peak intensity 27.8 cd/lm  
 LEDs/each optic 1  
 Light colour/type White  
 Required components:

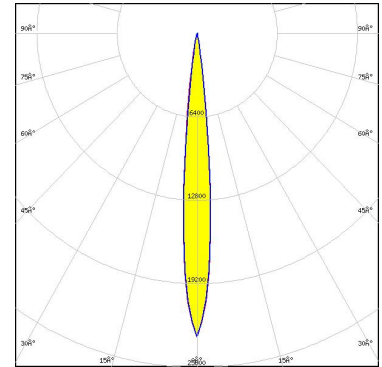


Light distribution files

#### OPTICAL RESULTS (SIMULATED):



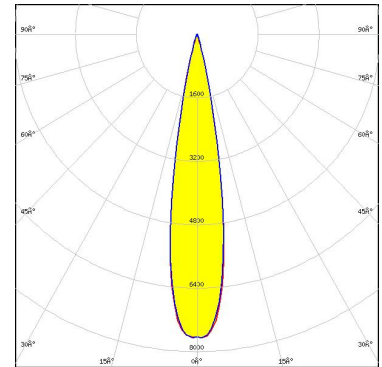
LED XHP50.3 HI  
 FWHM / FWTM 10.0° / 18.0°  
 Efficiency 96 %  
 Peak intensity 23.3 cd/lm  
 LEDs/each optic 1  
 Light colour/type White  
 Required components:



Light distribution files



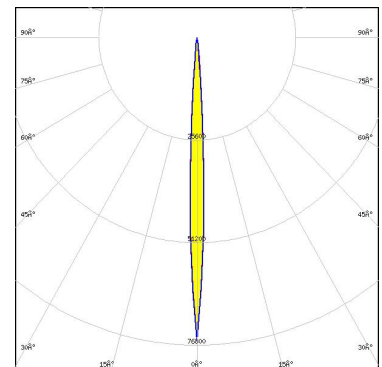
LED XHP70.3 HI  
 FWHM / FWTM 20.0° / 30.0°  
 Efficiency 95 %  
 Peak intensity 7.7 cd/lm  
 LEDs/each optic 1  
 Light colour/type White  
 Required components:



Light distribution files



LED XP-E  
 FWHM / FWTM 6.0° / 12.0°  
 Efficiency 92 %  
 Peak intensity 75.7 cd/lm  
 LEDs/each optic 1  
 Light colour/type White  
 Required components:

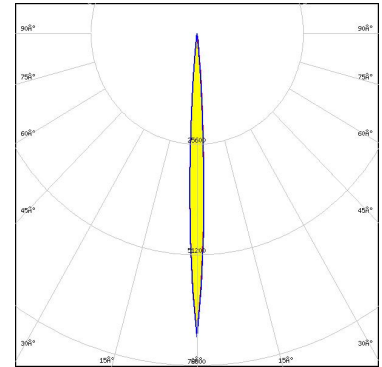


Light distribution files

#### OPTICAL RESULTS (SIMULATED):



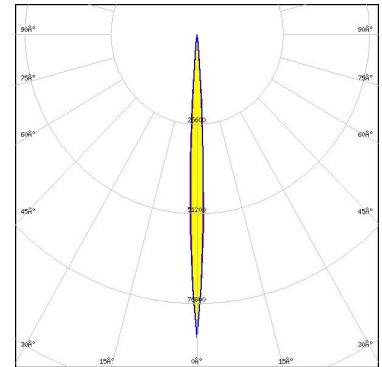
**LED** XP-E2  
**FWHM / FWTM** 6.0° / 12.0°  
**Efficiency** 90 %  
**Peak intensity** 70.2 cd/lm  
**LEDs/each optic** 1  
**Light colour/type** Red  
**Required components:**



Light distribution files



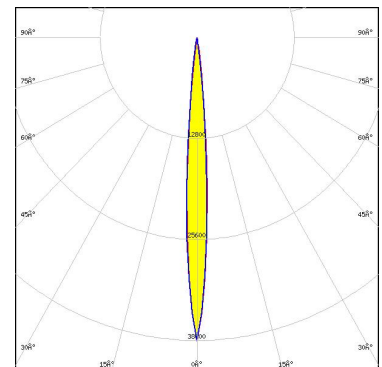
**LED** XP-E2  
**FWHM / FWTM** 5.0° / 10.0°  
**Efficiency** 91 %  
**Peak intensity** 85 cd/lm  
**LEDs/each optic** 1  
**Light colour/type** White  
**Required components:**



Light distribution files



**LED** XP-G2 HE  
**FWHM / FWTM** 8.0° / 14.0°  
**Efficiency** 90 %  
**Peak intensity** 38.5 cd/lm  
**LEDs/each optic** 1  
**Light colour/type** White  
**Required components:**

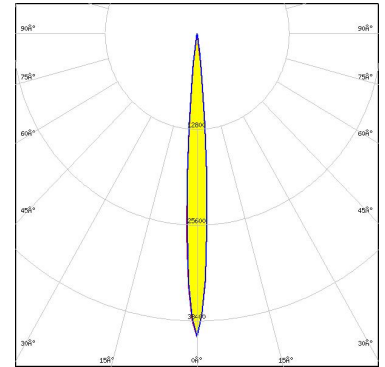


Light distribution files

### OPTICAL RESULTS (SIMULATED):



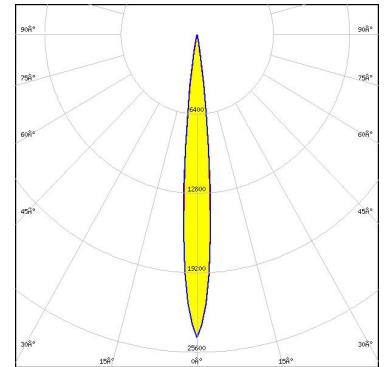
LED XP-G3  
 FWHM / FWTM 7.7° / 14.0°  
 Efficiency 90 %  
 Peak intensity 40.5 cd/lm  
 LEDs/each optic 1  
 Light colour/type White  
 Required components:



Light distribution files



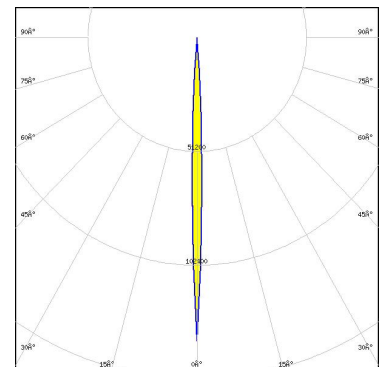
LED XP-L2  
 FWHM / FWTM 10.0° / 18.0°  
 Efficiency 89 %  
 Peak intensity 24.4 cd/lm  
 LEDs/each optic 1  
 Light colour/type White  
 Required components:



Light distribution files



LED XP-P  
 FWHM / FWTM 4.0° / 8.0°  
 Efficiency 90 %  
 Peak intensity 136.5 cd/lm  
 LEDs/each optic 1  
 Light colour/type White  
 Required components:

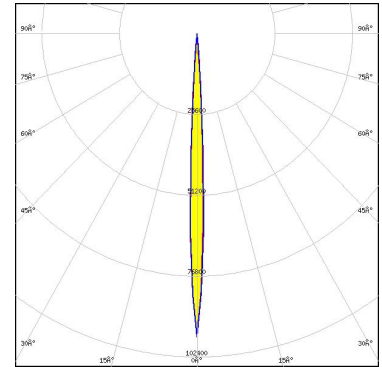


Light distribution files

#### OPTICAL RESULTS (SIMULATED):



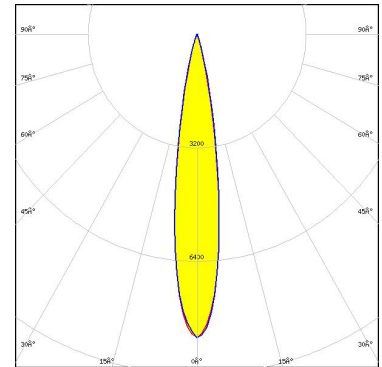
LED XQ-E HD  
 FWHM / FWTM 5.2° / 9.5°  
 Efficiency 92 %  
 Peak intensity 96.1 cd/lm  
 LEDs/each optic 1  
 Light colour/type White  
 Required components:



Light distribution files



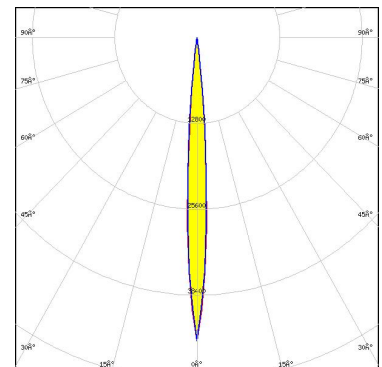
LED LUXEON 7070  
 FWHM / FWTM 16.0° / 30.0°  
 Efficiency 90 %  
 Peak intensity 8.6 cd/lm  
 LEDs/each optic 1  
 Light colour/type White  
 Required components:



Light distribution files



LED LUXEON HL2X  
 FWHM / FWTM 8.0° / 14.0°  
 Efficiency 92 %  
 Peak intensity 45.2 cd/lm  
 LEDs/each optic 1  
 Light colour/type White  
 Required components:

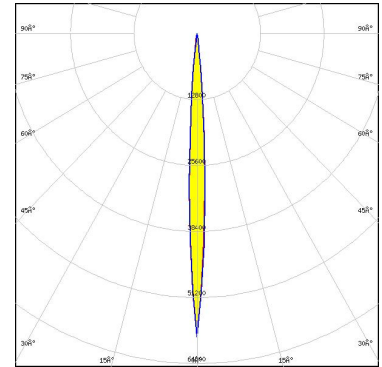


Light distribution files

### OPTICAL RESULTS (SIMULATED):



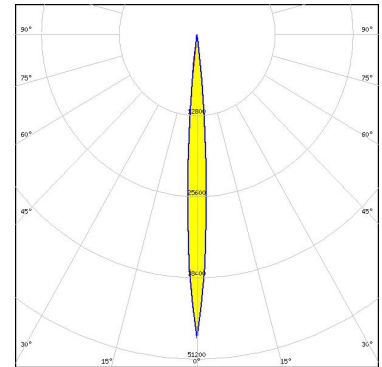
LED LUXEON HL2Z  
 FWHM / FWTM 6.0° / 12.0°  
 Efficiency 90 %  
 Peak intensity 58.9 cd/lm  
 LEDs/each optic 1  
 Light colour/type White  
 Required components:



Light distribution files



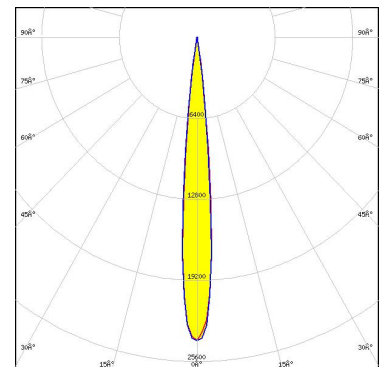
LED LUXEON HL4Z  
 FWHM / FWTM 8.0° / 14.0°  
 Efficiency 91 %  
 Peak intensity 47.9 cd/lm  
 LEDs/each optic 1  
 Light colour/type White  
 Required components:



Light distribution files



LED LUXEON MZ  
 FWHM / FWTM 10.5° / 17.8°  
 Efficiency 94 %  
 Peak intensity 24.3 cd/lm  
 LEDs/each optic 1  
 Light colour/type White  
 Required components:



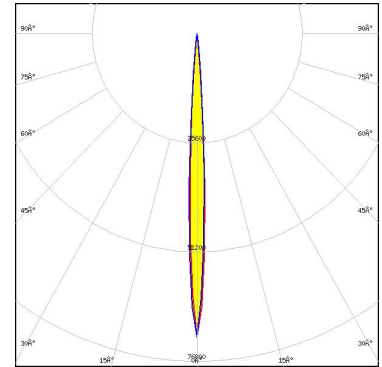
Light distribution files



### OPTICAL RESULTS (SIMULATED):



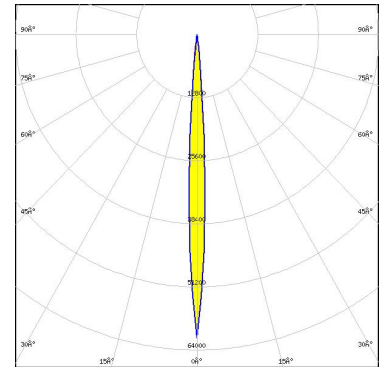
LED LUXEON Rebel Plus  
 FWHM / FWTM 6.0° / 11.0°  
 Efficiency 89 %  
 Peak intensity 71.1 cd/lm  
 LEDs/each optic 1  
 Light colour/type White  
 Required components:



Light distribution files



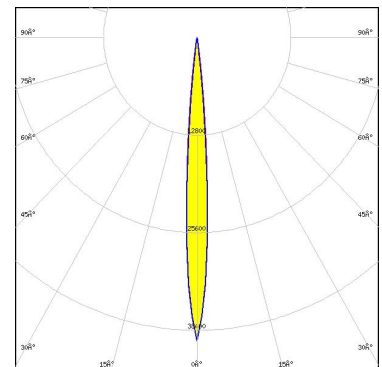
LED SFT-40-WCS  
 FWHM / FWTM 6.0° / 12.0°  
 Efficiency 95 %  
 Peak intensity 61.6 cd/lm  
 LEDs/each optic 1  
 Light colour/type White  
 Required components:



Light distribution files

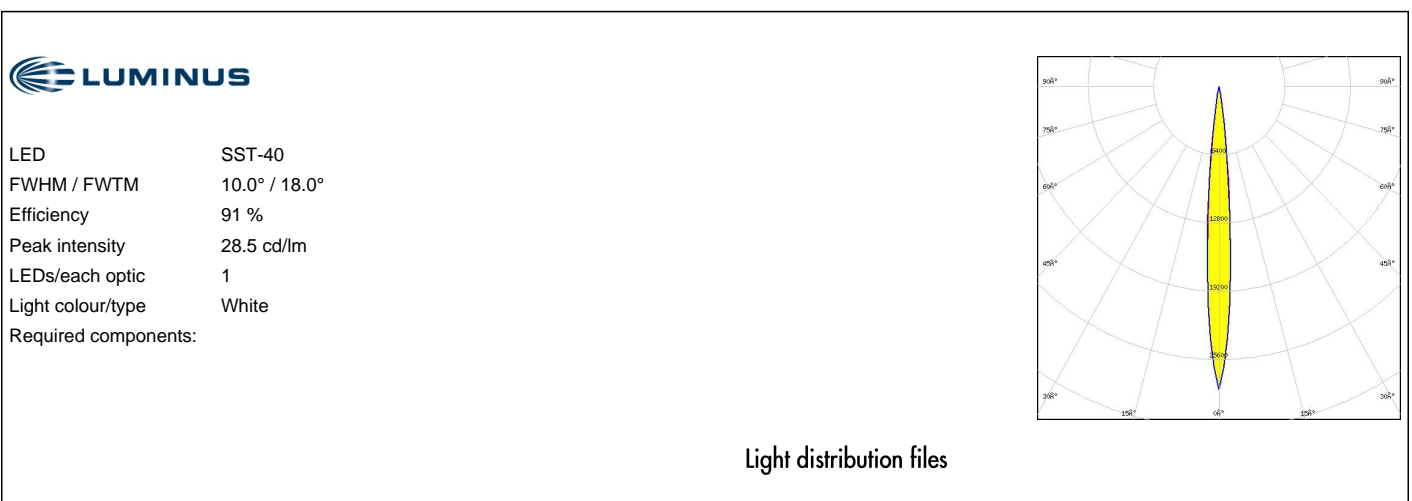
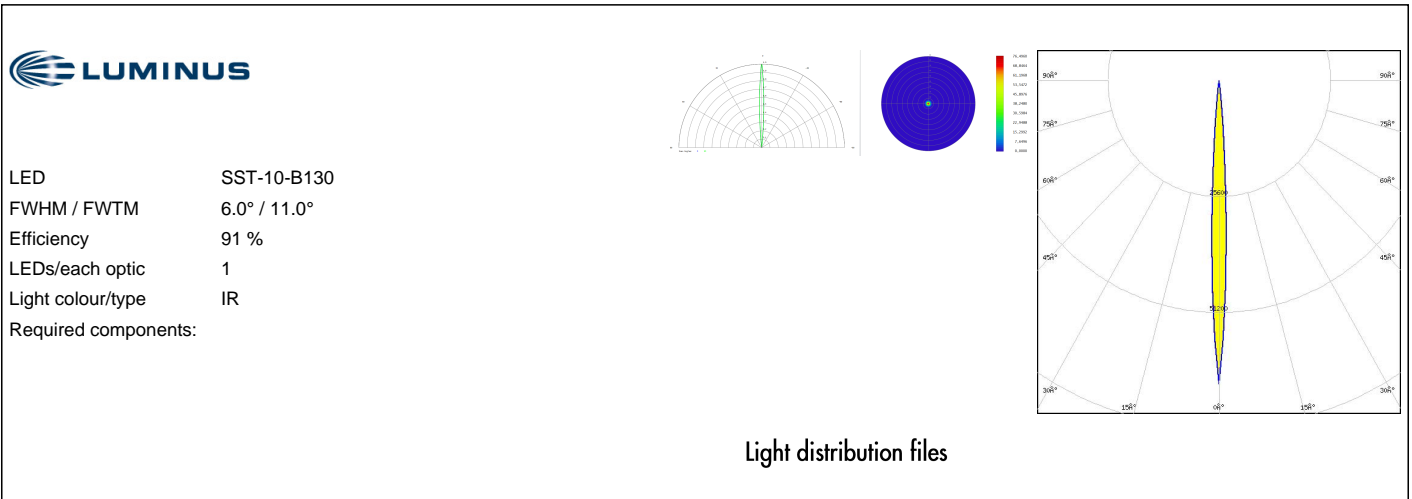


LED SFT-70X-WCS  
 FWHM / FWTM 8.0° / 14.0°  
 Efficiency 96 %  
 Peak intensity 39.8 cd/lm  
 LEDs/each optic 1  
 Light colour/type White  
 Required components:



Light distribution files

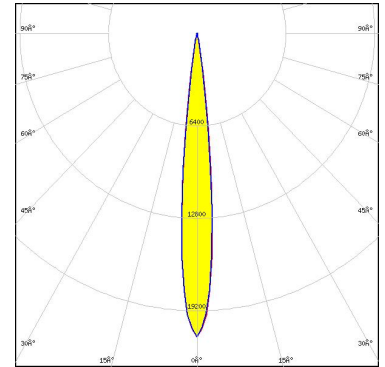
### OPTICAL RESULTS (SIMULATED):



#### OPTICAL RESULTS (SIMULATED):



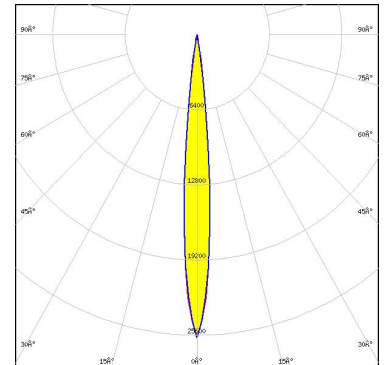
LED SST-70X-WCS  
 FWHM / FWTM 12.0° / 20.0 + 18.0°  
 Efficiency 96 %  
 Peak intensity 21 cd/lm  
 LEDs/each optic 1  
 Light colour/type White  
 Required components:



Light distribution files



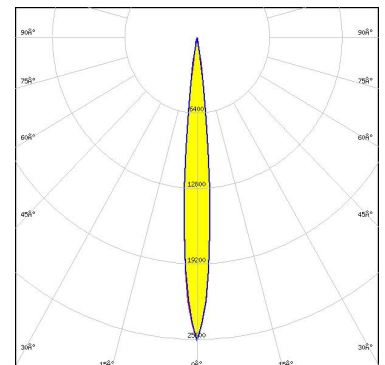
LED NV4WB35AM  
 FWHM / FWTM 10.0° / 18.0°  
 Efficiency 91 %  
 Peak intensity 25.8 cd/lm  
 LEDs/each optic 1  
 Light colour/type White  
 Required components:



Light distribution files



LED NV4WB35AM  
 FWHM / FWTM 10.0° / 18.0°  
 Efficiency 91 %  
 Peak intensity 25.7 cd/lm  
 LEDs/each optic 1  
 Light colour/type White  
 Required components:

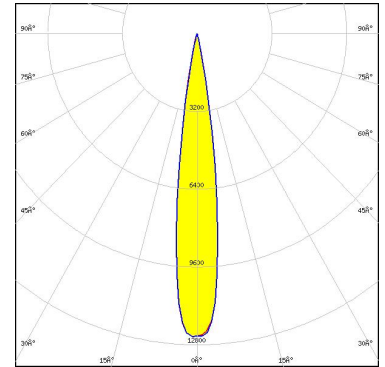


Light distribution files

### OPTICAL RESULTS (SIMULATED):



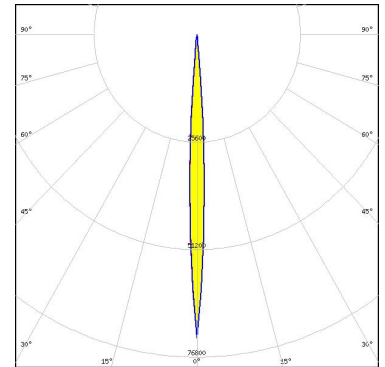
LED NV4x144A  
FWHM / FWTM 15.0° / 24.0°  
Efficiency 89 %  
Peak intensity 12.6 cd/lm  
LEDs/each optic 1  
Light colour/type White  
Required components:



Light distribution files



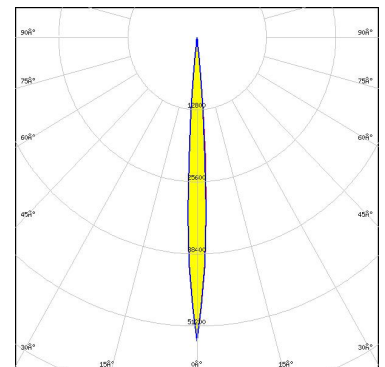
LED NVSW219C-V2  
FWHM / FWTM 6.0° / 12.0°  
Efficiency 91 %  
Peak intensity 72.2 cd/lm  
LEDs/each optic 1  
Light colour/type White  
Required components:



Light distribution files

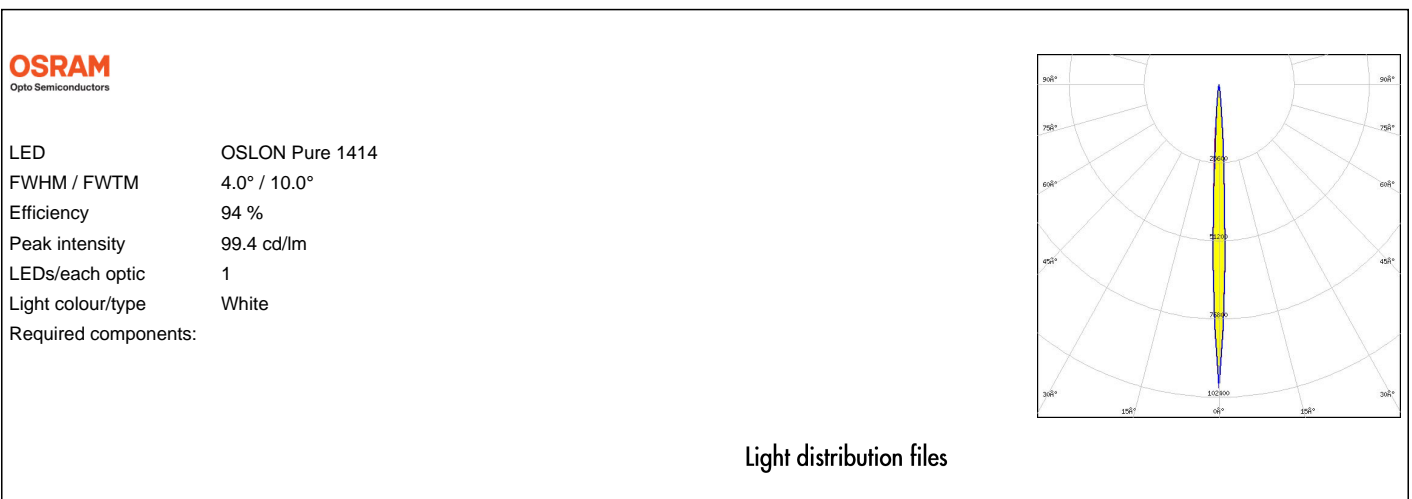
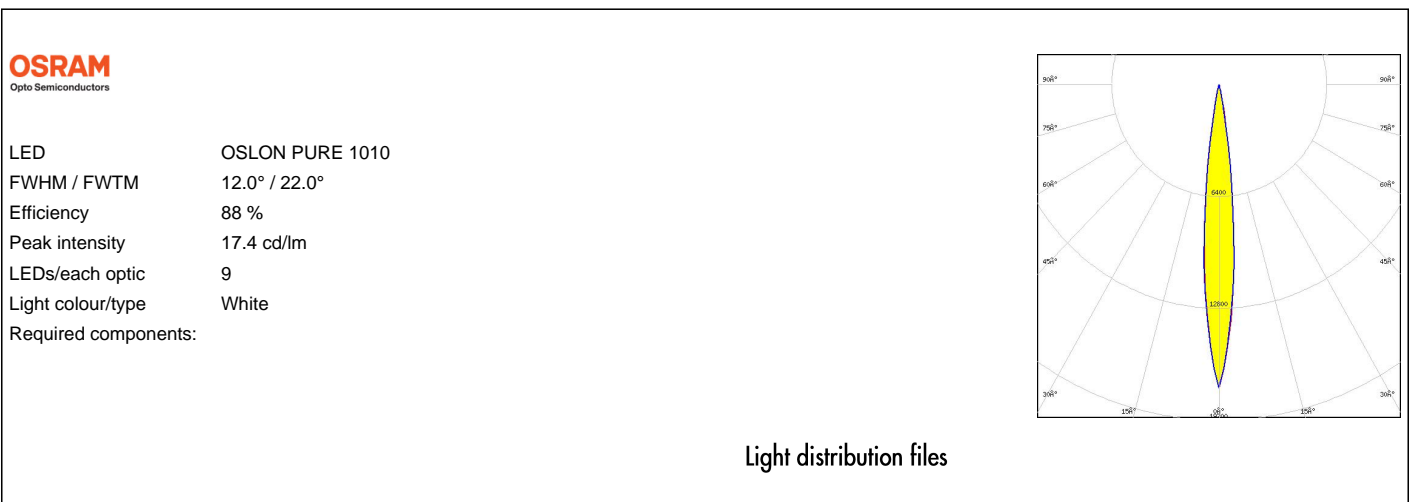
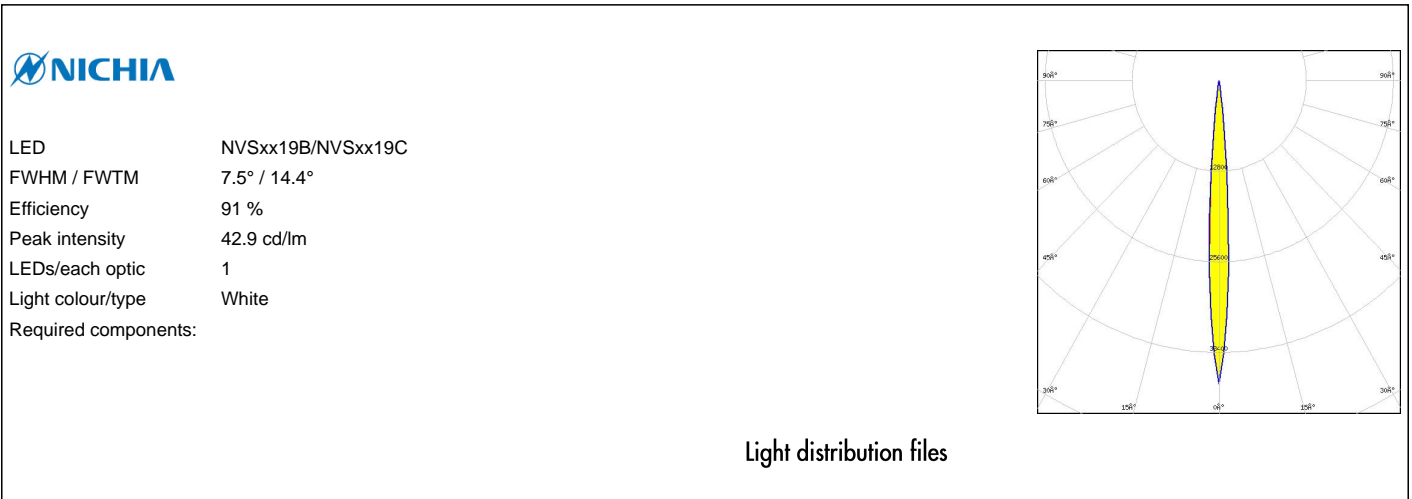


LED NVSW719AC  
FWHM / FWTM 6.0° / 12.0°  
Efficiency 92 %  
Peak intensity 53.8 cd/lm  
LEDs/each optic 1  
Light colour/type White  
Required components:



Light distribution files

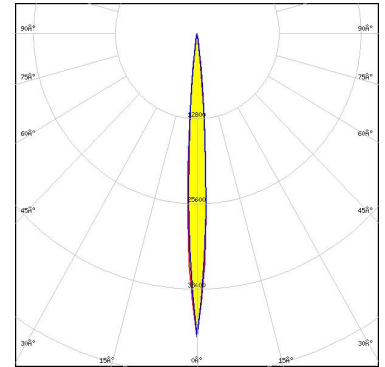
### OPTICAL RESULTS (SIMULATED):



### OPTICAL RESULTS (SIMULATED):

**OSRAM**  
Opto Semiconductors

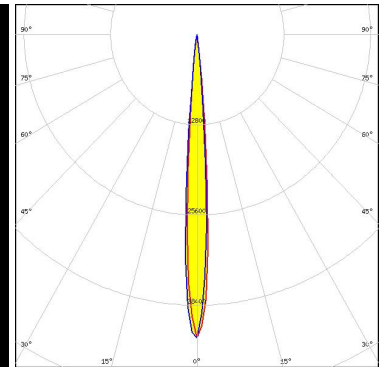
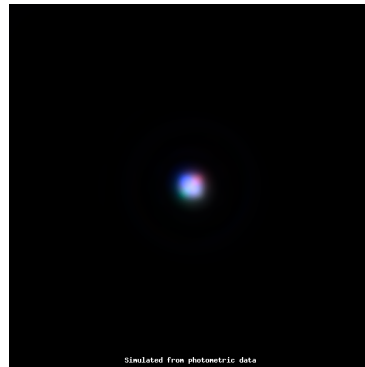
LED OSLON Square CSSRM2/CSSRM3  
FWHM / FWTM 7.0° / 14.0°  
Efficiency 92 %  
Peak intensity 46 cd/lm  
LEDs/each optic 1  
Light colour/type White  
Required components:



Light distribution files

**OSRAM**  
Opto Semiconductors

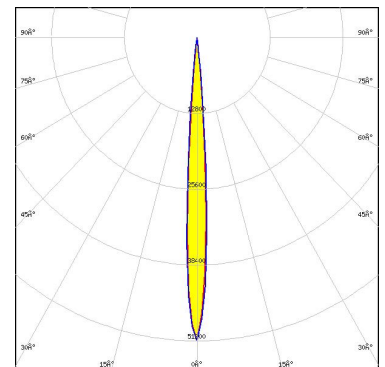
LED OSTAR Stage (S2WN)  
FWHM / FWTM 8.0° / 13.0°  
Efficiency 92 %  
Peak intensity 43.1 cd/lm  
LEDs/each optic 1  
Light colour/type RGBW  
Required components:



Light distribution files

**OSRAM**  
Opto Semiconductors

LED SFH 4715AS  
FWHM / FWTM 8.0° / 12.0°  
Efficiency 90 %  
LEDs/each optic 1  
Light colour/type IR  
Required components:

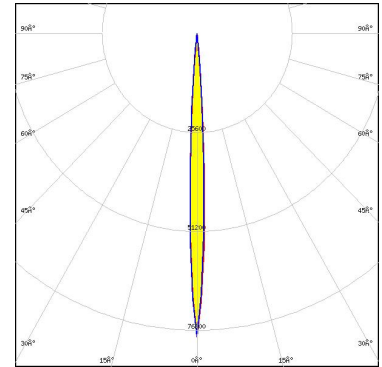


Light distribution files

### OPTICAL RESULTS (SIMULATED):

**OSRAM**  
Opto Semiconductors

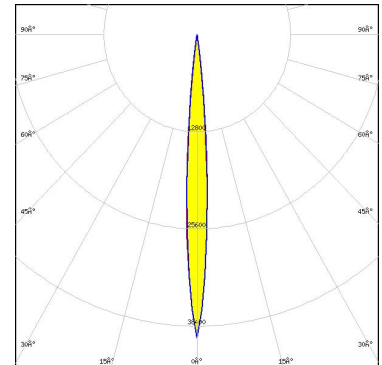
LED SFH 4716AS  
FWHM / FWTM 6.0° / 10.0°  
Efficiency 90 %  
LEDs/each optic 1  
Light colour/type IR  
Required components:



Light distribution files

**SAMSUNG**

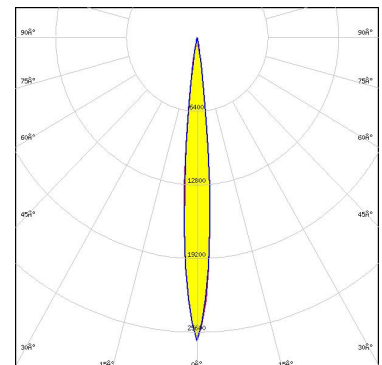
LED LH351C  
FWHM / FWTM 8.0° / 14.0°  
Efficiency 92 %  
Peak intensity 39.9 cd/lm  
LEDs/each optic 1  
Light colour/type White  
Required components:



Light distribution files

**SAMSUNG**

LED LH351D  
FWHM / FWTM 10.0° / 18.0°  
Efficiency 91 %  
Peak intensity 26.4 cd/lm  
LEDs/each optic 1  
Light colour/type White  
Required components:

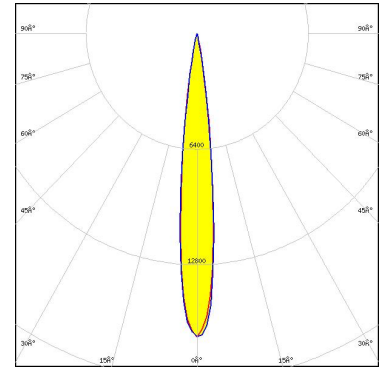


Light distribution files

#### OPTICAL RESULTS (SIMULATED):

### SAMSUNG

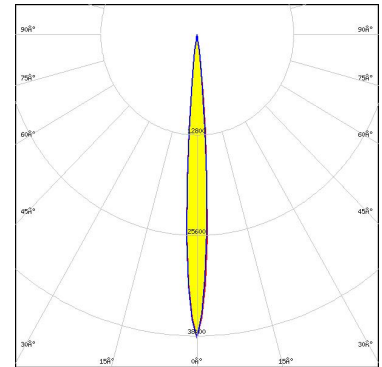
LED LH502D  
 FWHM / FWTM 12.0° / 22.0°  
 Efficiency 91 %  
 Peak intensity 16.8 cd/m  
 LEDs/each optic 1  
 Light colour/type White  
 Required components:



Light distribution files



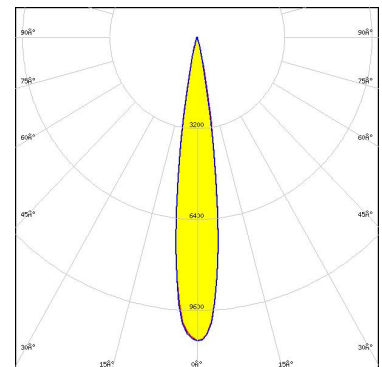
LED Z8Y22P  
 FWHM / FWTM 8.0° / 14.0°  
 Efficiency 87 %  
 Peak intensity 38.7 cd/m  
 LEDs/each optic 1  
 Light colour/type White  
 Required components:



Light distribution files



LED Z8Y50P  
 FWHM / FWTM 15.5° / 26.1°  
 Efficiency 94 %  
 Peak intensity 10.7 cd/m  
 LEDs/each optic 1  
 Light colour/type White  
 Required components:



Light distribution files



### GENERAL INFORMATION:

NOTE: The typical beam angle will be changed by different color, chip size and chip position tolerance. The typical total beam angle is the full angle measured where the luminous intensity is half of the peak value.

### MATERIALS:

As part of our continuous research and improvement processes, and to ensure the best possible quality and availability of our products, LEDiL reserves the right to change material grades without notice.

### PRODUCT DATA USER AGREEMENT AND DISCLAIMER:

The measured data in the provided downloadable LEDiL Product Datasheets and Mechanical 2D-Drawings is rounded and provided as reference for planning. LEDiL Oy's optical specifications have been verified by conducting performance testing of the products in accordance with the company's quality system. The reported data are averaged results of multiple measurements with typical variation. LEDiL Oy reserves the right to without prior notification make changes and improvements to its products.

LEDiL Oy assumes neither warranty, nor guarantee nor any other liability of any kind for the contents and correctness of the provided data. The provided data has been generated with highest diligence but the provided data may in reality not represent the complete possible variation range of all intrinsic parameters. Therefore, in certain cases a deviation from the provided data could occur.

LEDiL Oy reserves the right to undertake technical changes of its products without further notification which could lead to changes in the provided data. LEDiL Oy assumes no liability of any kind for the possible deviation from any provided data or any other damage resulting from the usage of the provided data.

The user agrees to this disclaimer and user agreement with the download or usage of the provided files.

#### LEDiL Oy

Joensuunkatu 7  
FI-24240 SALO  
Finland

#### LEDiL Inc.

228 West Page Street  
Suite D  
Sycamore IL 60178  
USA

#### Ledil Optics Technology (Shenzhen) Co., Ltd.

# 405 , Block B  
Casic Motor Building  
Shenzhen 518057  
P.R.CHINA

#### Local sales and technical support

[www.ledil.com/  
where\\_to\\_buy](http://www.ledil.com/where_to_buy)

#### Shipping locations

Poznan, Poland  
Hong Kong, China

#### Distribution Partners

[www.ledil.com/  
where\\_to\\_buy](http://www.ledil.com/where_to_buy)