

H

G

F

E

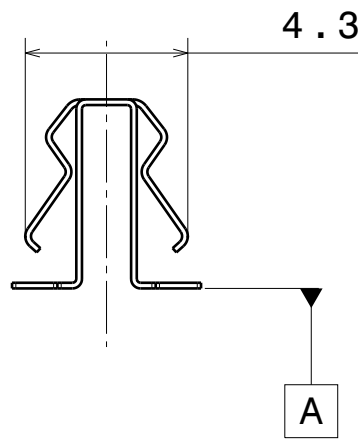
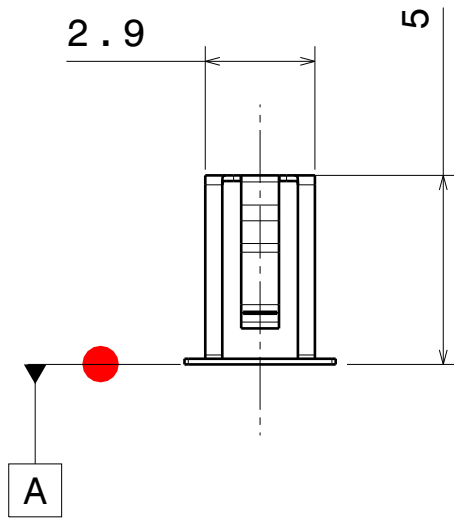
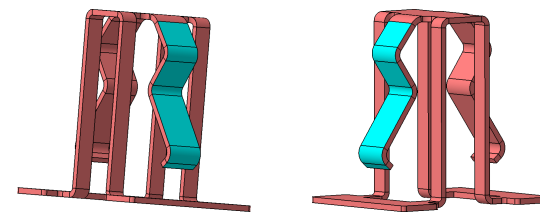
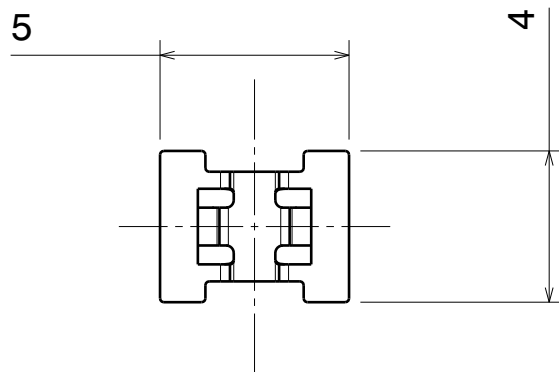
D

C

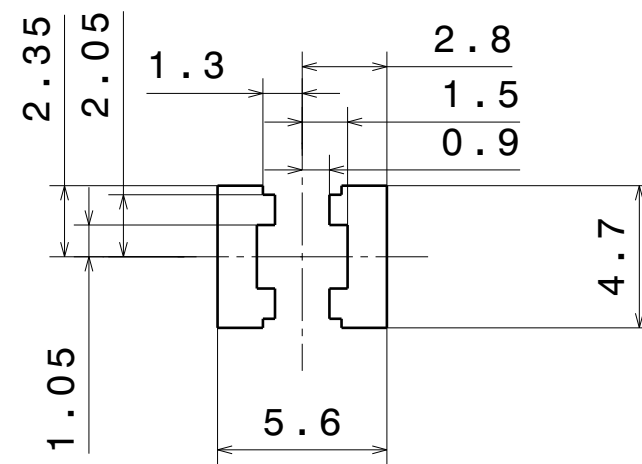
B

A

DATE
04.05.2020



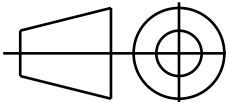
Recommended PAD design



Notes

- PCB or heatsink level.
- LED location
- Ensure LED fitting from a product specific 3D model available from www.ledil.com
- For more details about installation please see LEDiL Installation Guide on www.ledil.com

PART	TYPE	MATERIAL	COLOR / COATING
F17250_SOLDER-CLIP-A_		AISI301	Ni+Sn coating

MECHANICAL DRAWING		LEDiL®
PRODUCT SOLDER CLIP		
Plastic moulding general tolerances according to DIN 16901-130 and applies if not otherwise shown in the drawing. Silicone moulding general tolerances according to ISO 3302-1 Class M3 and applies if not otherwise shown in the drawing.	FIRST ANGLE PROJECTION: 	This drawing is the property of LEDiL Oy. It may not be copied or otherwise distributed without prior written permission from LEDiL Oy.
SCALE 1 : 1	WEIGHT -	A3 SHEET 1 / 1

H

G

B

A