

VIOLET-12X1-S

~20° wide beam when used with one UV LED

SPECIFICATION:

Dimensions	294.8 x 41.6 mm
Height	8.8 mm
Fastening	screw
Ingress protection classes	IP67
ROHS compliant	yes ⓘ

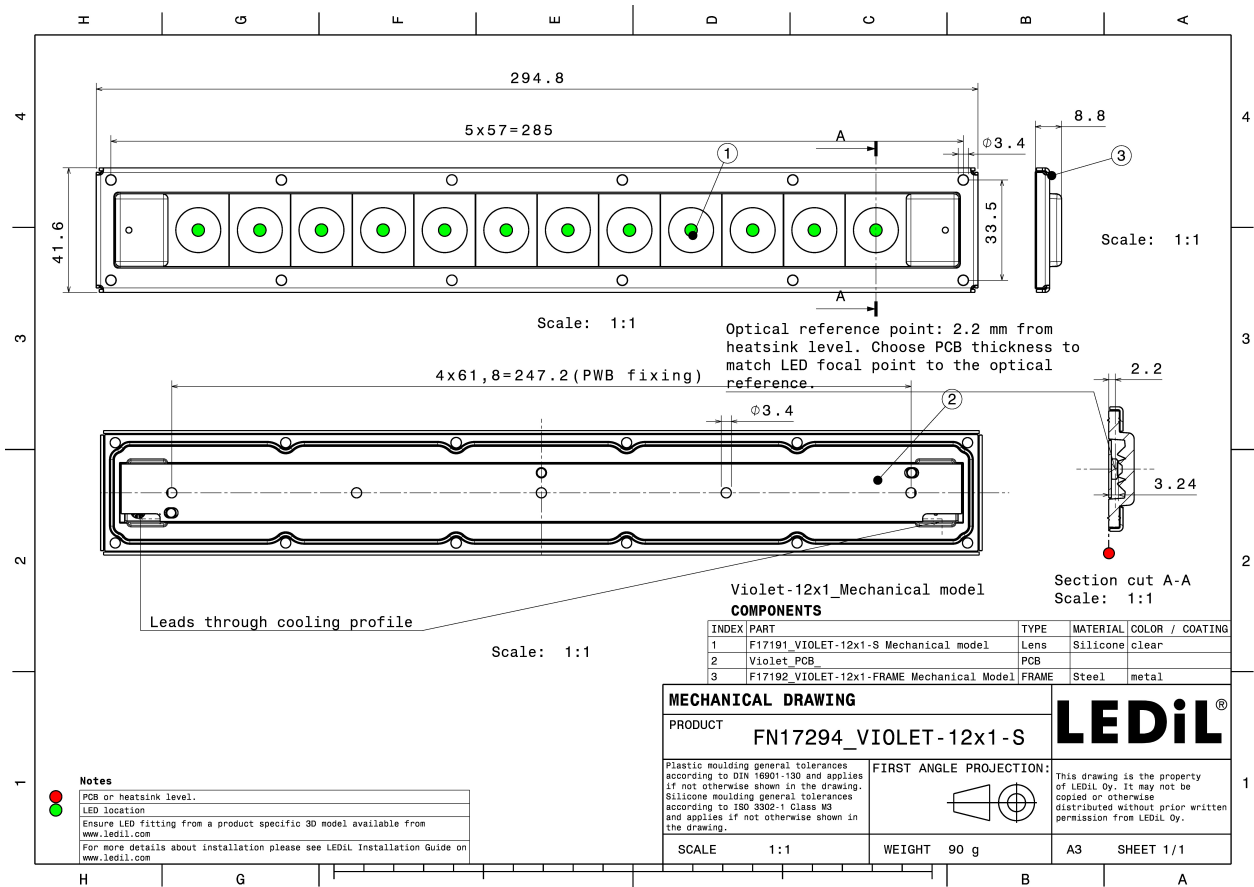
MATERIALS:

Component	Type	Material	Colour	Finish
VIOLET-12X1-S	Multi-lens	Silicone	clear	
VIOLET-12X1-FRAME	Accessory	Stainless steel	metal	



ORDERING INFORMATION:

Component		Qty in box	MOQ	MPQ	Box weight (kg)
FN17294_VIOLET-12X1-S	Multi-lens	78	26	26	7.7
» Box size: 398 x 298 x 150 mm					



See also our general installation guide: www.ledil.com/installation_guide

OPTICAL RESULTS (MEASURED):



LED LIGHT ENGINE VIOLET UVC 281 x 19.2mm (KL265-50V-SM-WD)
FWHM / FWTM 16.0° / 43.0°
Efficiency 55 %
LEDs/each optic 1
Light colour UV-C
Required components:

The UVC LED result tolerance is ± 10 %



LED CLH-N3S
FWHM / FWTM 36.0° / 63.0°
Efficiency 64 %
LEDs/each optic 1
Light colour UV-C
Required components:

The UVC LED result tolerance is ± 10 %



LED KL265-50V-SM-WD
FWHM / FWTM 23.0° / 51.0°
Efficiency 54 %
LEDs/each optic 1
Light colour UV-C
Required components:

The UVC LED result tolerance is ± 10 %



LED 110384-GC VIOLET
FWHM / FWTM 24.0° / 65.0°
Efficiency 69 %
LEDs/each optic 1
Light colour UV-C
Required components:

The UVC LED result tolerance is ± 10 %

OPTICAL RESULTS (MEASURED):



LED 110384-GM VIOLET
FWHM / FWTM 47.0° / 74.0°
Efficiency 70 %
LEDs/each optic 1
Light colour UV-C
Required components:

The UVC LED result tolerance is ± 10 %



LED LTPL-G35UV275GC-E
FWHM / FWTM 15.0° / 46.0°
Efficiency 63 %
LEDs/each optic 1
Light colour UV-C
Required components:

The UVC LED result tolerance is ± 10 %



LED LTPL-G35UV275GR-E
FWHM / FWTM 21.0° / 50.0°
Efficiency 63 %
LEDs/each optic 1
Light colour UV-C
Required components:

The UVC LED result tolerance is ± 10 %



LED LTPL-G35UVC275GH
FWHM / FWTM 26.0° / 54.0°
Efficiency 61 %
LEDs/each optic 1
Light colour UV-C
Required components:

The UVC LED result tolerance is ± 10 %

OPTICAL RESULTS (MEASURED):



LED LTPL-G35UVC275GZ
FWHM / FWTM 28.0° / 53.0°
Efficiency 62 %
LEDs/each optic 1
Light colour UV-C
Required components:

The UVC LED result tolerance is ± 10 %



LED XBT-3535-UV
FWHM / FWTM 32.0° / 60.0°
Efficiency 64 %
LEDs/each optic 1
Light colour UV-C
Required components:

The UVC LED result tolerance is ± 10 %



LED XFM-5050 2 Die
FWHM / FWTM 32.0° / 59.0°
Efficiency 57 %
LEDs/each optic 1
Light colour UV-C
Required components:

The UVC LED result tolerance is ± 10 %



LED XFM-5050 3 Die
FWHM / FWTM 28.0° / 55.0°
Efficiency 51 %
LEDs/each optic 1
Light colour UV-C
Required components:

The UVC LED result tolerance is ± 10 %

OPTICAL RESULTS (MEASURED):



LED XST-3535-UV
FWHM / FWTM 23.0° / 51.0°
Efficiency 62 %
LEDs/each optic 1
Light colour UV-C
Required components:

The UVC LED result tolerance is ± 10 %



LED Violet UVC LED-Modul 280nm
FWHM / FWTM 36.0° / 64.0°
Efficiency 64 %
LEDs/each optic 1
Light colour UV-C
Required components:

The UVC LED result tolerance is ± 10 %



LED NCSU334A
FWHM / FWTM 23.0° / 52.0°
Efficiency 64 %
LEDs/each optic 1
Light colour UV-C
Required components:

The UVC LED result tolerance is ± 10 %



LED NCSU334B
FWHM / FWTM 26.0° / 51.0°
Efficiency 61 %
LEDs/each optic 1
Light colour UV-C
Required components:

The UVC LED result tolerance is ± 10 %

OPTICAL RESULTS (MEASURED):

OSRAM

LED CLE LED module with UV-C (SU CULCN1.VC)
FWHM / FWTM 28.0° / 56.0°
Efficiency 64 %
LEDs/each optic 1
Light colour UV-C
Required components:

The UVC LED result tolerance is ± 10 %

OSRAM Opto Semiconductors

LED OSLOM UV 6060 (SU CZHPF1.VC)
FWHM / FWTM 31.0° / 60.0°
Efficiency 61 %
LEDs/each optic 1
Light colour UV-C
Required components:

The UVC LED result tolerance is ± 10 %

SAMSUNG

LED UV351A
FWHM / FWTM 22.0° / 61.0°
Efficiency 65 %
LEDs/each optic 1
Light colour UV-C
Required components:

The UVC LED result tolerance is ± 10 %

SAMSUNG

LED UV351B
FWHM / FWTM 38.0° / 64.0°
Efficiency 63 %
LEDs/each optic 1
Light colour UV-C
Required components:

The UVC LED result tolerance is ± 10 %

OPTICAL RESULTS (MEASURED):

SAMSUNG

LED UV352B
FWHM / FWTM 44.0° / 71.0°
Efficiency 63 %
LEDs/each optic 1
Light colour UV-C
Required components:

The UVC LED result tolerance is ± 10 %

SAMSUNG

LED UV353B
FWHM / FWTM 45.0° / 74.0°
Efficiency 60 %
LEDs/each optic 1
Light colour UV-C
Required components:

The UVC LED result tolerance is ± 10 %



SEOUL SEMICONDUCTOR

LED CUD7GF1A
FWHM / FWTM 13.0° / 40.0°
Efficiency 57 %
LEDs/each optic 1
Light colour UV-C
Required components:

The UVC LED result tolerance is ± 10 %



SEOUL SEMICONDUCTOR


LED CUD7GF1B
FWHM / FWTM 19.0° / 43.0°
Efficiency 56 %
LEDs/each optic 1
Light colour UV-C
Required components:


The UVC LED result tolerance is ± 10 %

OPTICAL RESULTS (MEASURED):

 SEOUL SEMICONDUCTOR	
LED	CUD7QF1A
FWHM / FWTM	14.0° / 41.0°
Efficiency	54 %
LEDs/each optic	1
Light colour	UV-C
Required components:	
The UVC LED result tolerance is ± 10 %	

 SEOUL SEMICONDUCTOR	
LED	XMD-FBC-LLCA
FWHM / FWTM	17.0° / 47.0°
Efficiency	60 %
LEDs/each optic	1
Light colour	UV-C
Required components:	
The UVC LED result tolerance is ± 10 %	

 SEOUL SEMICONDUCTOR	
LED	XMD-FBC-LLOA
FWHM / FWTM	32.0° / 65.0°
Efficiency	58 %
LEDs/each optic	2
Light colour	UV-C
Required components:	
The UVC LED result tolerance is ± 10 %	

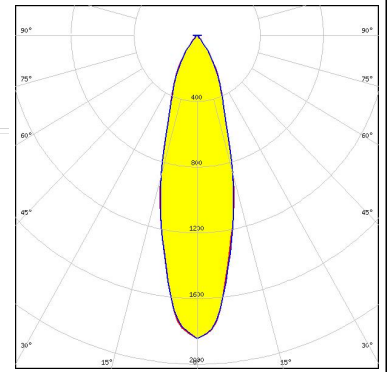
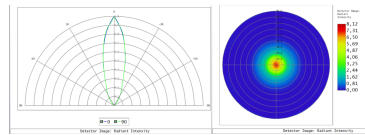
 SEOUL SEMICONDUCTOR	
LED	XMD-FBC-LLVA
FWHM / FWTM	45.0° / 70.0°
Efficiency	58 %
LEDs/each optic	4
Light colour	UV-C
Required components:	
The UVC LED result tolerance is ± 10 %	

OPTICAL RESULTS (SIMULATED):

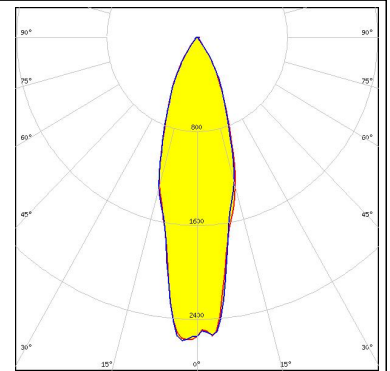


LED Bolb UV-C 6060 SMD
 FWHM / FWTM 28.0° / 66.0°
 Efficiency 70 %
 LEDs/each optic 1
 Light colour UV-C
 Required components:

The UVC LED result tolerance is ± 10 %

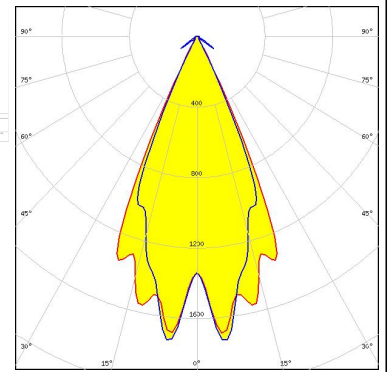
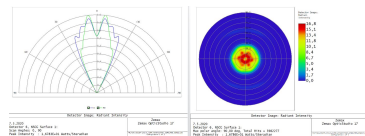


LED XT-E
 FWHM / FWTM 30.0° / 64.5°
 Efficiency 86 %
 Peak intensity 2.4 cd/lm
 LEDs/each optic 1
 Light colour White
 Required components:



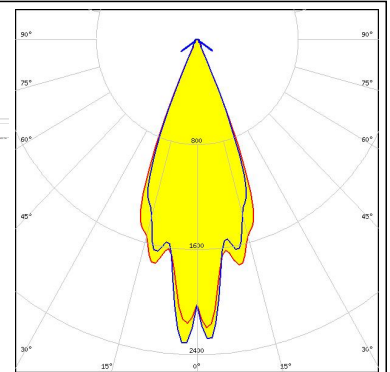
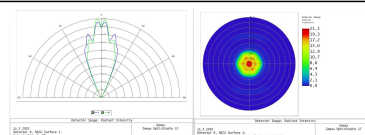
LED LTPL-G35UV275GC-E
 FWHM / FWTM 46.0° / 57.0°
 Efficiency 72 %
 LEDs/each optic 1
 Light colour UV-C
 Required components:

The UVC LED result tolerance is ± 10 %



LED LTPL-G35UV275GR-E
 FWHM / FWTM 40.0° / 51.0°
 Efficiency 72 %
 LEDs/each optic 1
 Light colour UV-C
 Required components:

The UVC LED result tolerance is ± 10 %

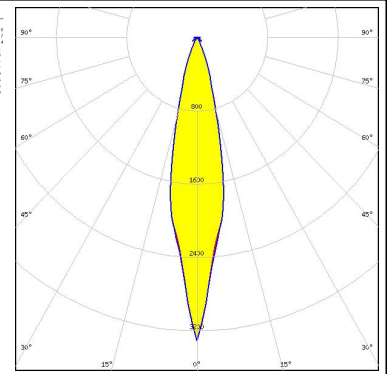
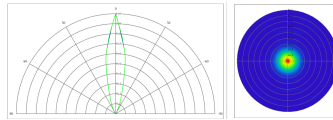


OPTICAL RESULTS (SIMULATED):



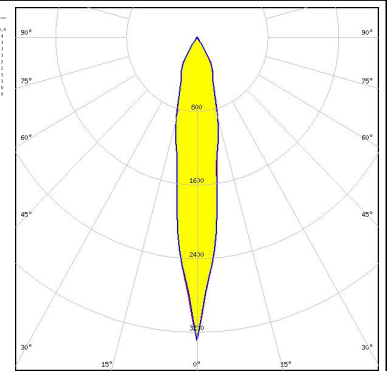
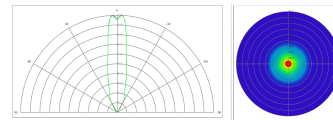
LED LTPL-G35UVC275GM
 FWHM / FWTM 22.0° / 44.0°
 Efficiency 66 %
 LEDs/each optic 1
 Light colour UV-C
 Required components:

The UVC LED result tolerance is ± 10 %



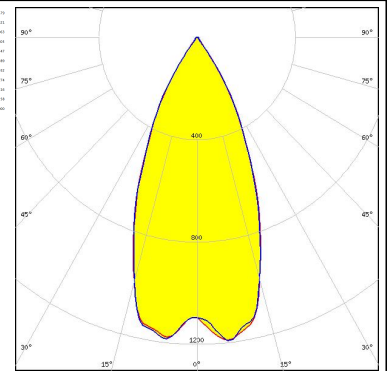
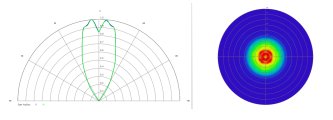
LED XBT-1313
 FWHM / FWTM 22.0° / 64.0°
 Efficiency 71 %
 LEDs/each optic 1
 Light colour UV-C
 Required components:

The UVC LED result tolerance is ± 10 %



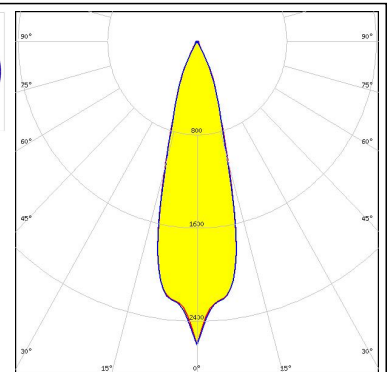
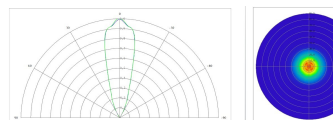
LED XBT-3535-UV
 FWHM / FWTM 47.0° / 72.0°
 Efficiency 73 %
 LEDs/each optic 1
 Light colour UV-C
 Required components:

The UVC LED result tolerance is ± 10 %

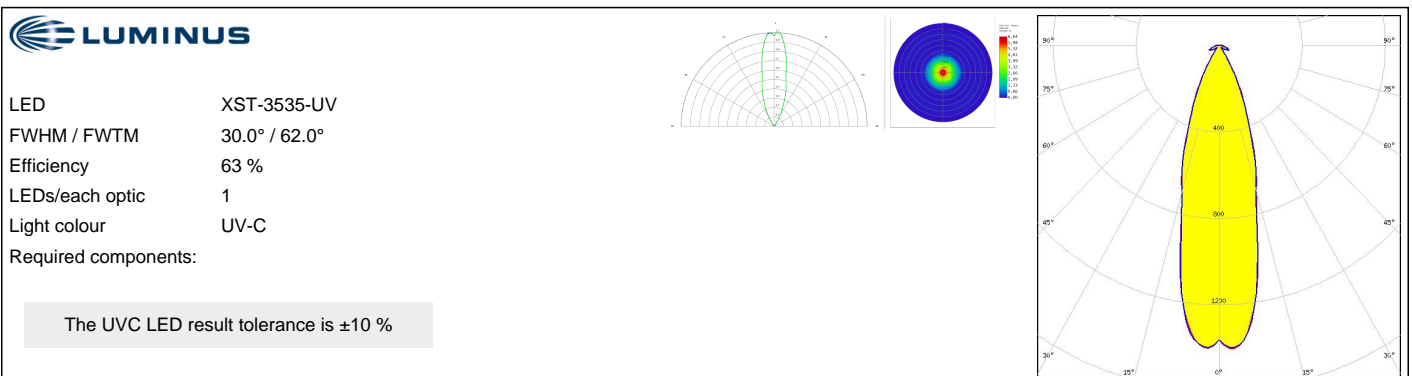
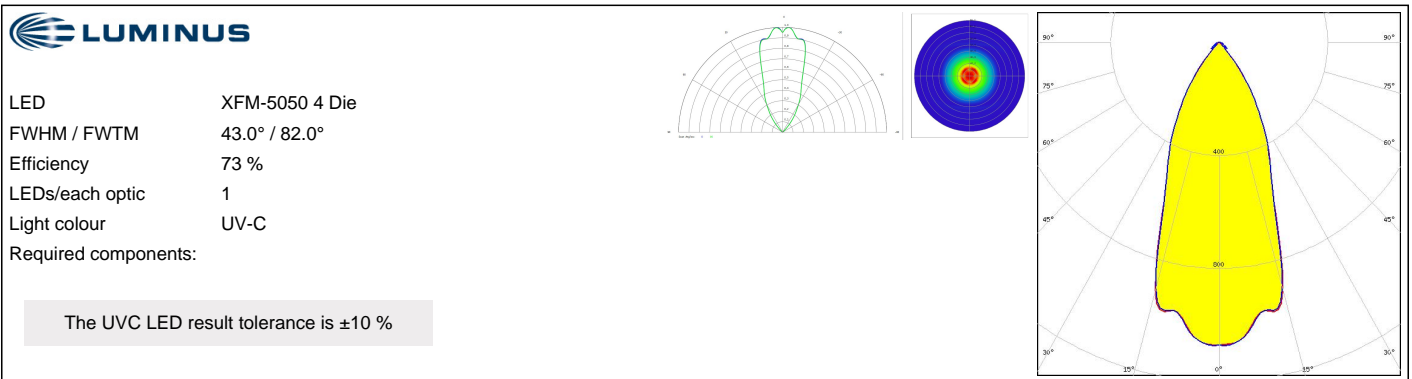
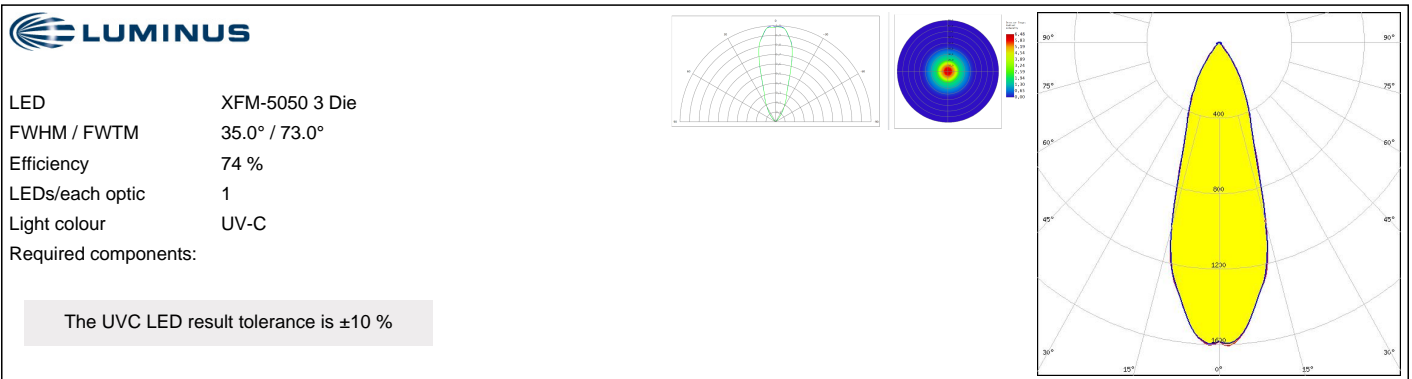
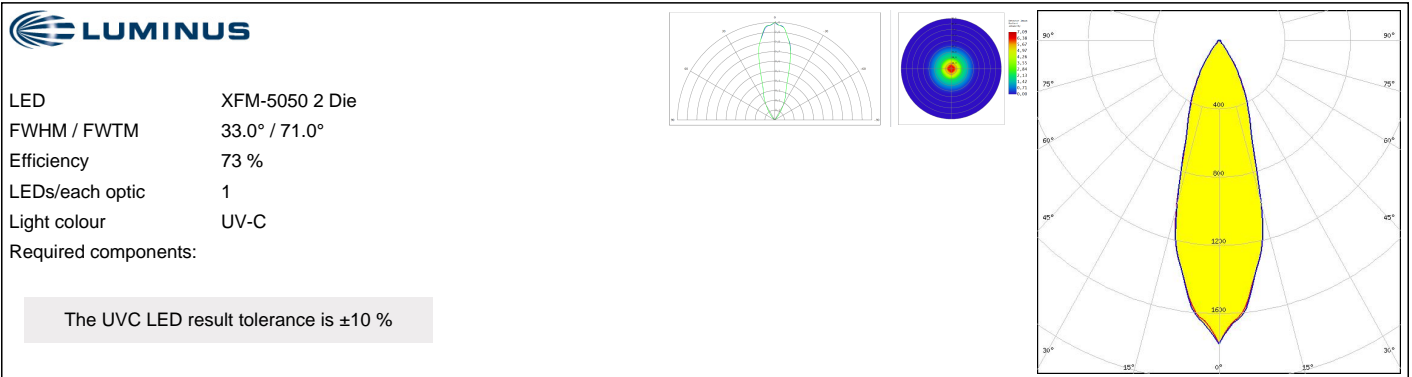


LED XBT-3535-UV
 FWHM / FWTM 29.0° / 55.0°
 Efficiency 72 %
 LEDs/each optic 1
 Light colour UV-C
 Required components:

The UVC LED result tolerance is ± 10 %



OPTICAL RESULTS (SIMULATED):

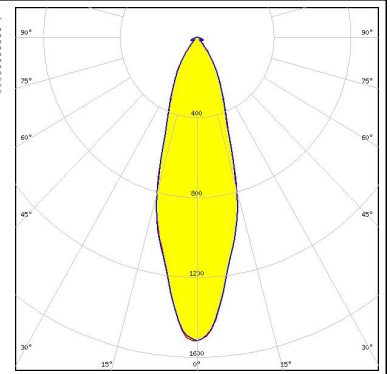
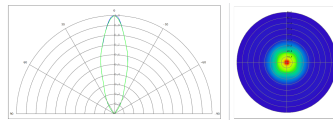


OPTICAL RESULTS (SIMULATED):



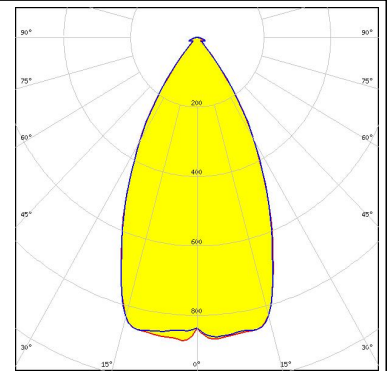
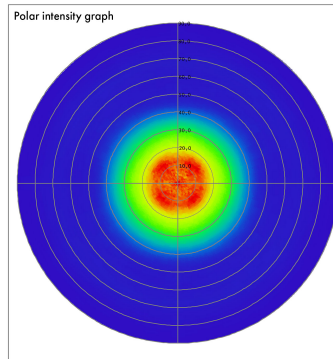
LED XST-3535-UV
FWHM / FWTM 32.0° / 69.0°
Efficiency 68 %
LEDs/each optic 1
Light colour UV-C
Required components:

The UVC LED result tolerance is ± 10 %



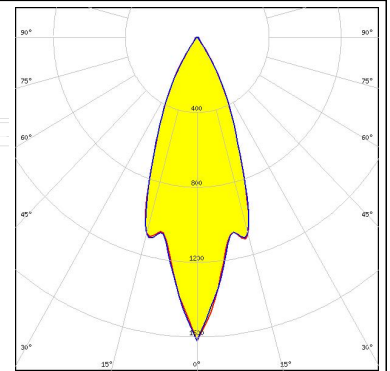
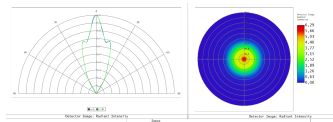
LED NC4U334BR
FWHM / FWTM 53.0° / 80.0°
Efficiency 75 %
LEDs/each optic 1
Light colour UV-C
Required components:

The UVC LED result tolerance is ± 10 %



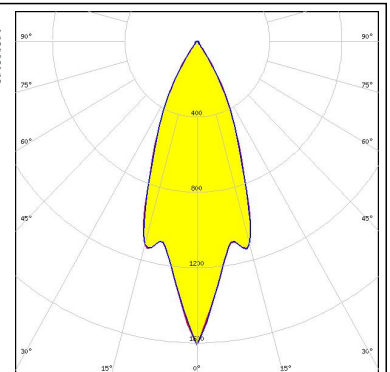
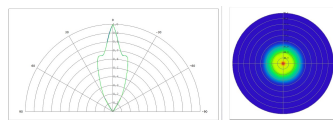
LED NCSU334A
FWHM / FWTM 40.0° / 68.0°
Efficiency 72 %
LEDs/each optic 1
Light colour UV-C
Required components:

The UVC LED result tolerance is ± 10 %



LED NCSU334B
FWHM / FWTM 39.0° / 68.0°
Efficiency 75 %
LEDs/each optic 1
Light colour UV-C
Required components:

The UVC LED result tolerance is ± 10 %



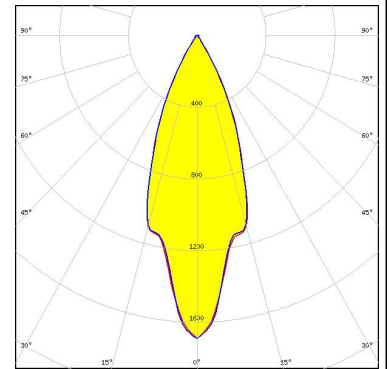
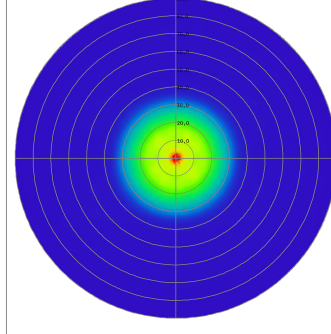
OPTICAL RESULTS (SIMULATED):



LED NCSU434A
FWHM / FWTM 37.0° / 65.0°
Efficiency 75 %
LEDs/each optic 1
Light colour UV-C
Required components:

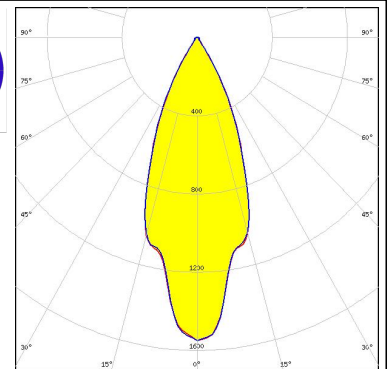
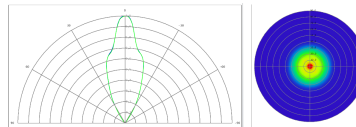
The UVC LED result tolerance is ± 10 %

Polar intensity graph



LED NCSU434B
FWHM / FWTM 39.0° / 67.0°
Efficiency 75 %
LEDs/each optic 1
Light colour UV-C
Required components:

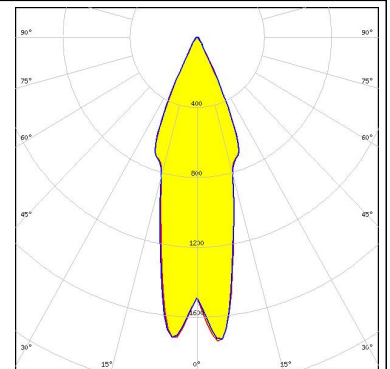
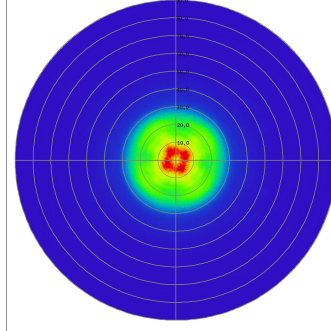
The UVC LED result tolerance is ± 10 %



LED OSLO UV 3636 (SU CULBN1.VC)
FWHM / FWTM 29.0° / 60.0°
Efficiency 72 %
LEDs/each optic 1
Light colour UV-C
Required components:

The UVC LED result tolerance is ± 10 %

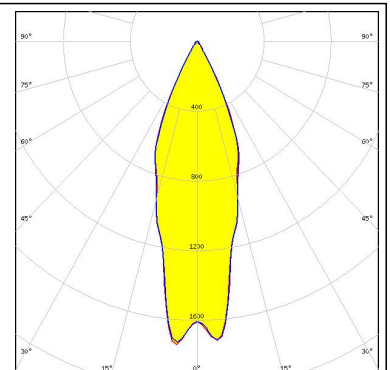
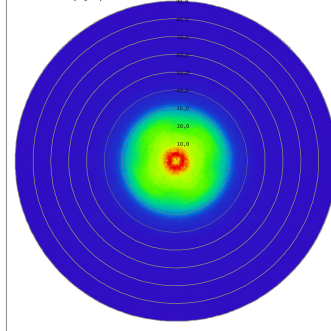
Polar intensity graph



LED OSLO UV 3636 (SU CULCN1.VC)
FWHM / FWTM 33.0° / 63.0°
Efficiency 74 %
LEDs/each optic 1
Light colour UV-C
Required components:

The UVC LED result tolerance is ± 10 %

Polar intensity graph

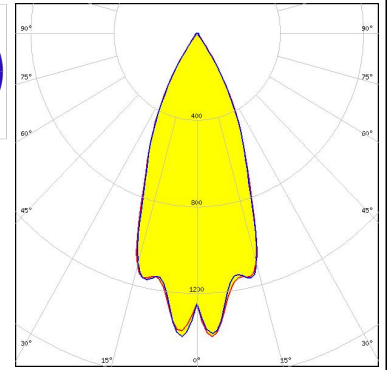
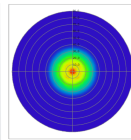
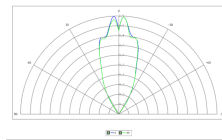


OPTICAL RESULTS (SIMULATED):

OSRAM
Opto Semiconductors

LED OSLOM UV 3636 (SU CULDN1.VC)
FWHM / FWTM 41.0° / 69.0°
Efficiency 74 %
LEDs/each optic 1
Light colour UV-C
Required components:

The UVC LED result tolerance is ± 10 %

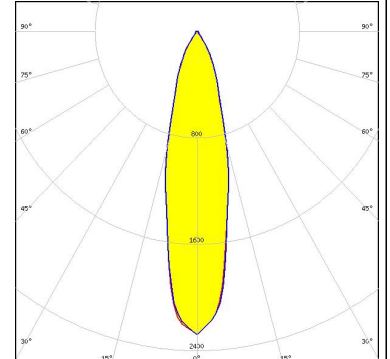
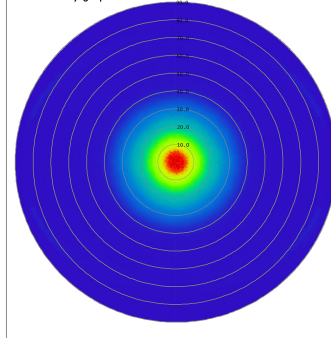


OSRAM
Opto Semiconductors

LED OSLOM UV 6060 (SU CZHEF1.VC)
FWHM / FWTM 27.0° / 62.0°
Efficiency 68 %
LEDs/each optic 1
Light colour UV-C
Required components:

The UVC LED result tolerance is ± 10 %

Polar intensity graph

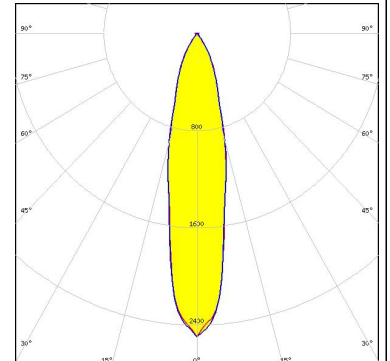
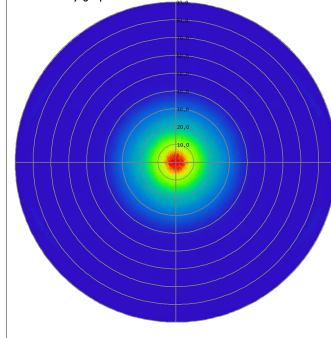


OSRAM
Opto Semiconductors

LED OSLOM UV 6060 (SU CZHPF1.VC)
FWHM / FWTM 24.0° / 61.0°
Efficiency 71 %
LEDs/each optic 1
Light colour UV-C
Required components:

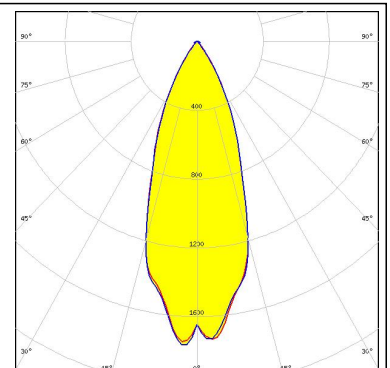
The UVC LED result tolerance is ± 10 %

Polar intensity graph

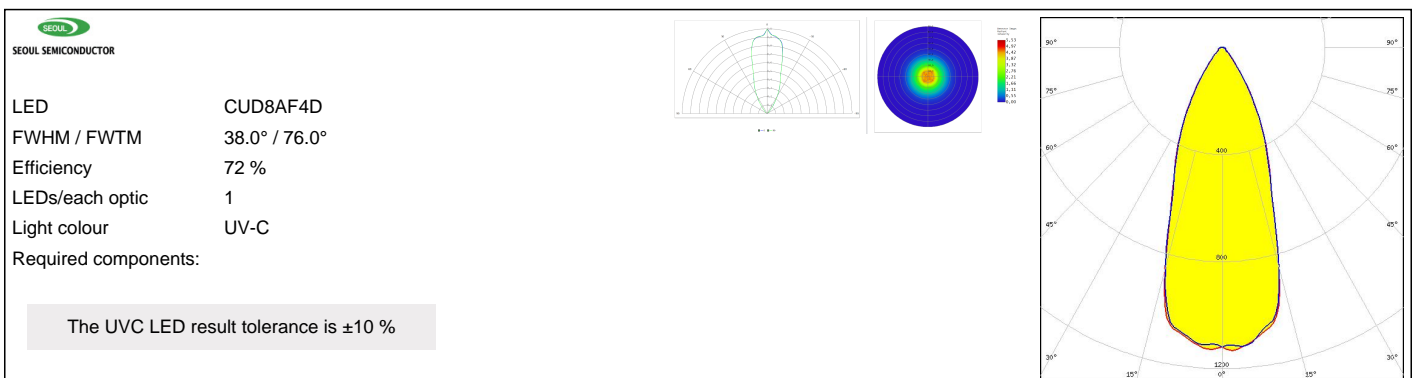
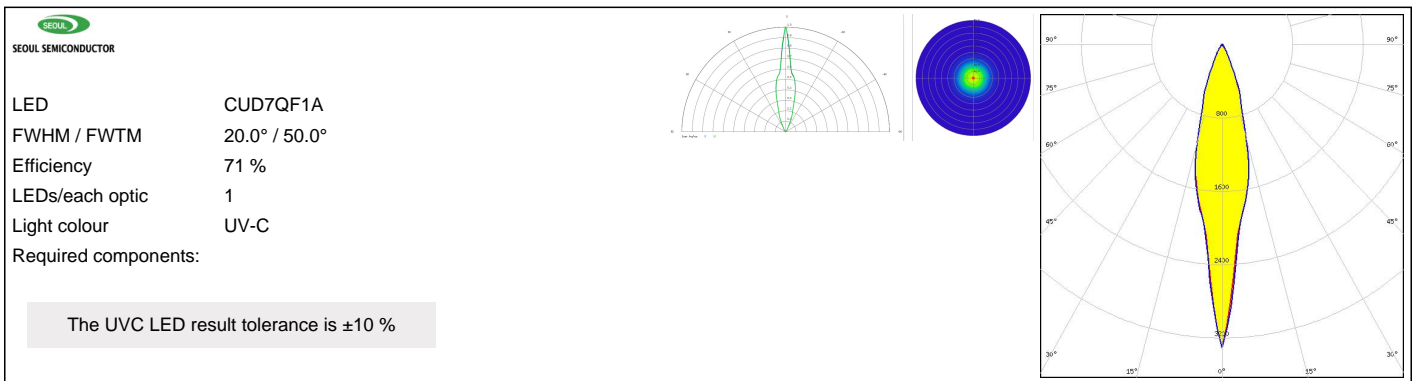
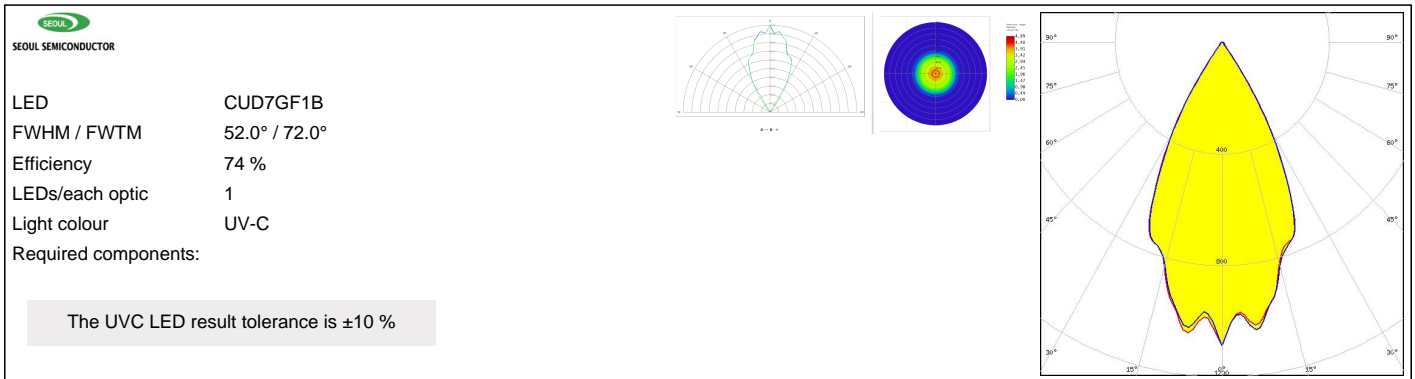
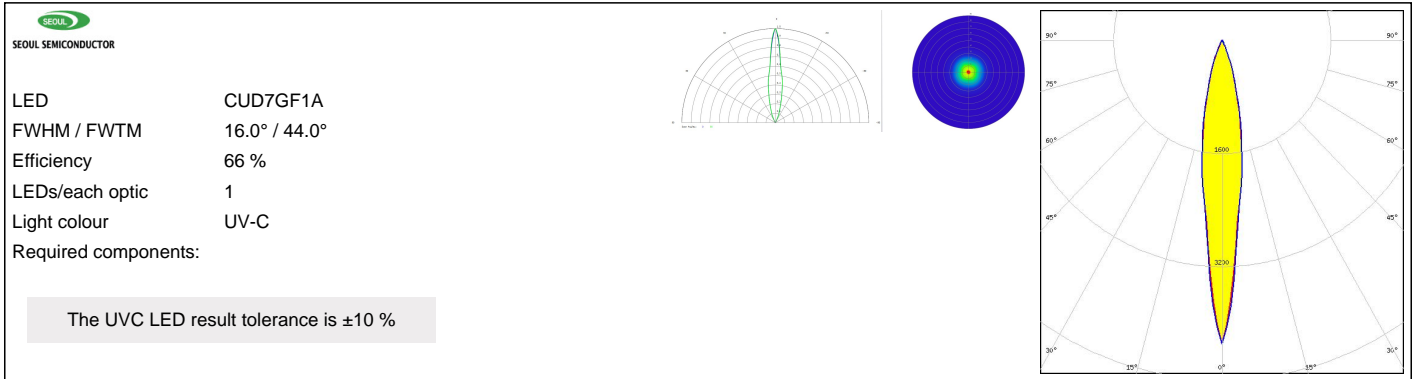


SAMSUNG

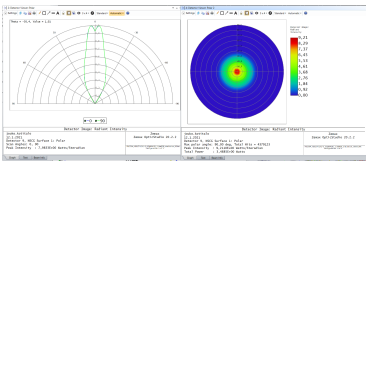
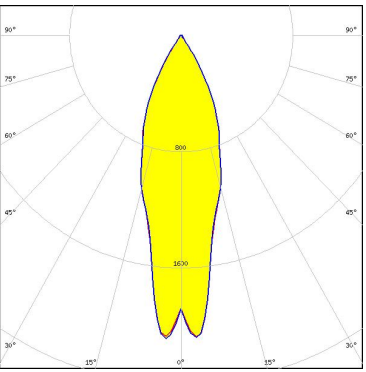
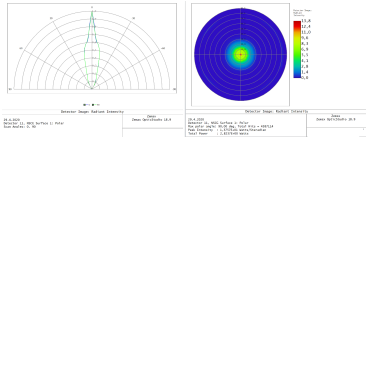
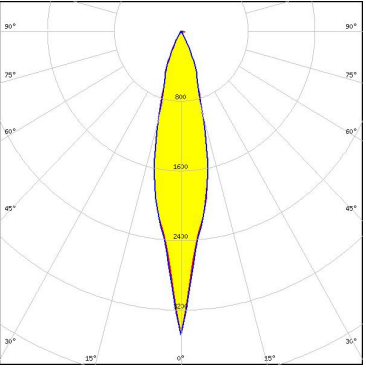
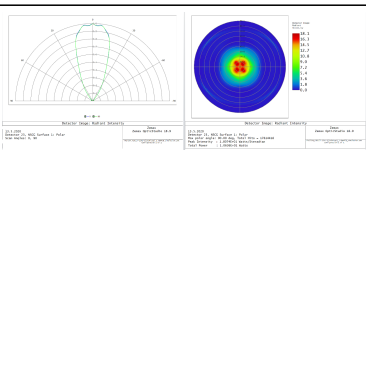
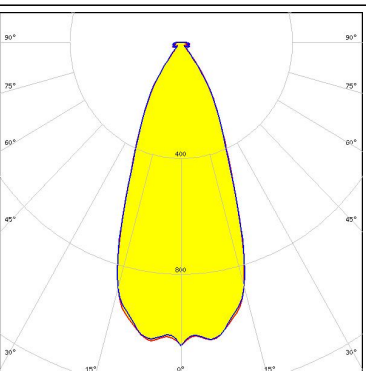
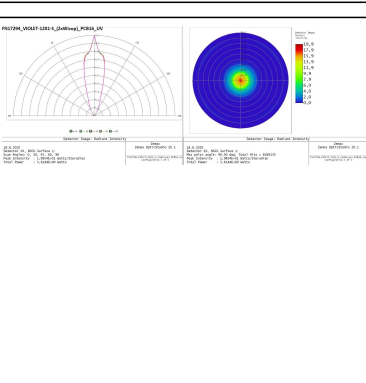
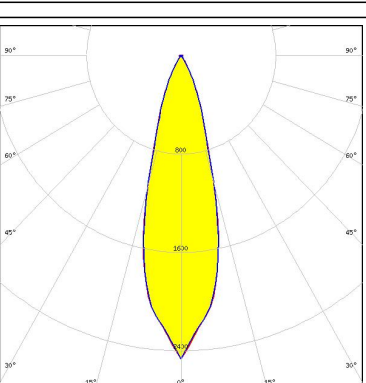
LED LM301B
FWHM / FWTM 38.0° / 68.0°
Efficiency 88 %
Peak intensity 1.8 cd/Im
LEDs/each optic 1
Light colour White
Required components:



OPTICAL RESULTS (SIMULATED):



OPTICAL RESULTS (SIMULATED):

<p>SEOUL SEMICONDUCTOR</p> <p>LED CUN66A1B</p> <p>FWHM / FWTM 33.0° / 67.0°</p> <p>Efficiency 87 %</p> <p>LEDs/each optic 1</p> <p>Light colour UV-A</p> <p>Required components:</p>		
<p>SEOUL SEMICONDUCTOR</p> <p>LED WICOP DY9560-27</p> <p>FWHM / FWTM 22.0° / 51.0°</p> <p>Efficiency 72 %</p> <p>LEDs/each optic 1</p> <p>Light colour UV-C</p> <p>Required components:</p> <p>The UVC LED result tolerance is ± 10 %</p>		
<p>SEOUL SEMICONDUCTOR</p> <p>LED WICOP DY9560-27</p> <p>FWHM / FWTM 43.0° / 75.0°</p> <p>Efficiency 66 %</p> <p>LEDs/each optic 4</p> <p>Light colour UV-C</p> <p>Required components:</p> <p>The UVC LED result tolerance is ± 10 %</p>		
<p>SEOUL SEMICONDUCTOR</p> <p>LED WICOP DY9560-27</p> <p>FWHM / FWTM 28.0° / 52.0°</p> <p>Efficiency 70 %</p> <p>LEDs/each optic 2</p> <p>Light colour UV-C</p> <p>Required components:</p> <p>The UVC LED result tolerance is ± 10 %</p>		

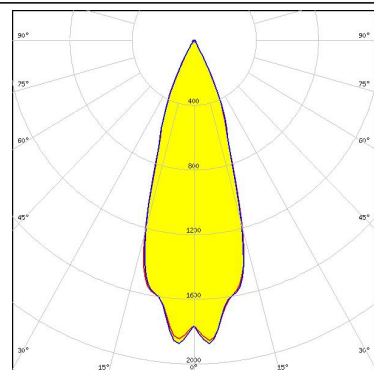
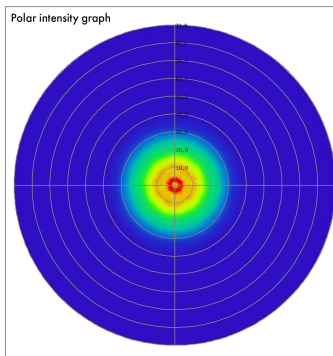
OPTICAL RESULTS (SIMULATED):



LED ZEUBE265 Series
FWHM / FWTM 34.0° / 59.0°
Efficiency 69 %
LEDs/each optic 1
Light colour UV-C
Required components:

The UVC LED result tolerance is ± 10 %

Polar intensity graph



GENERAL INFORMATION:

NOTE: The typical beam angle will be changed by different color, chip size and chip position tolerance. The typical total beam angle is the full angle measured where the luminous intensity is half of the peak value.

MATERIALS:

As part of our continuous research and improvement processes, and to ensure the best possible quality and availability of our products, LEDiL reserves the right to change material grades without notice.

PRODUCT DATA USER AGREEMENT AND DISCLAIMER:

The measured data in the provided downloadable LEDiL Product Datasheets and Mechanical 2D-Drawings is rounded and provided as reference for planning. LEDiL Oy's optical specifications have been verified by conducting performance testing of the products in accordance with the company's quality system. The reported data are averaged results of multiple measurements with typical variation. LEDiL Oy reserves the right to without prior notification make changes and improvements to its products.

LEDiL Oy assumes neither warranty, nor guarantee nor any other liability of any kind for the contents and correctness of the provided data. The provided data has been generated with highest diligence but the provided data may in reality not represent the complete possible variation range of all intrinsic parameters. Therefore, in certain cases a deviation from the provided data could occur.

LEDiL Oy reserves the right to undertake technical changes of its products without further notification which could lead to changes in the provided data. LEDiL Oy assumes no liability of any kind for the possible deviation from any provided data or any other damage resulting from the usage of the provided data.

The user agrees to this disclaimer and user agreement with the download or usage of the provided files.

LEDiL Oy

Joensuunkatu 13
FI-24240 SALO
Finland

LEDiL Inc.

228 West Page Street
Suite D
Sycamore IL 60178
USA

Ledil Optics Technology (Shenzhen) Co., Ltd.

405 , Block B
Casic Motor Building
Shenzhen 518057
P.R.CHINA

Local sales and technical support

[www.ledil.com/
where_to_buy](http://www.ledil.com/where_to_buy)

Shipping locations

Salo, Finland
Hong Kong, China

Distribution Partners

[www.ledil.com/
where_to_buy](http://www.ledil.com/where_to_buy)