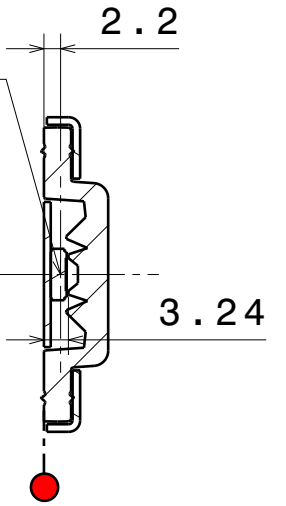
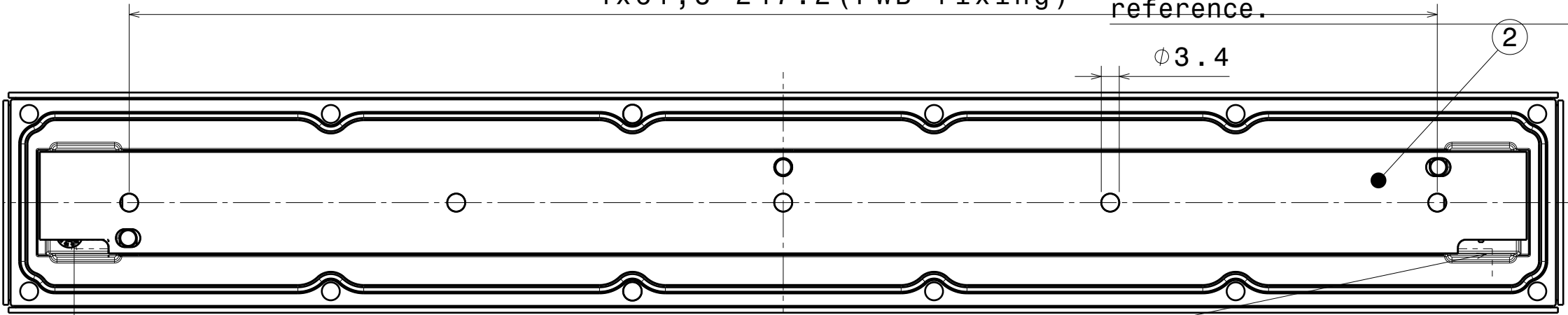


Scale: 1:1

Scale: 1:1

Optical reference point: 2.2 mm from heatsink level. Choose PCB thickness to match LED focal point to the optical reference.

4x61,8=247.2 (PWB fixing)



Section cut A-A
Scale: 1:1

Leads through cooling profile

Scale: 1:1

Violet-12x1_Mechanical model
COMPONENTS

INDEX	PART	TYPE	MATERIAL	COLOR / COATING
1	F17191_VIOLET-12x1-S Mechanical model	Lens	Silicone	clear
2	Violet_PCB_	PCB		
3	F17192_VIOLET-12x1-FRAME Mechanical Model	FRAME	Steel	metal

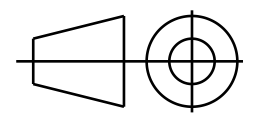
MECHANICAL DRAWING

PRODUCT **FN17294_VIOLET-12x1-S**



Plastic moulding general tolerances according to DIN 16901-130 and applies if not otherwise shown in the drawing. Silicone moulding general tolerances according to ISO 3302-1 Class M3 and applies if not otherwise shown in the drawing.

FIRST ANGLE PROJECTION:



This drawing is the property of LEDiL Oy. It may not be copied or otherwise distributed without prior written permission from LEDiL Oy.

SCALE 1:1

WEIGHT 90 g

A3 SHEET 1/1

Notes

- PCB or heatsink level.
- LED location
- Ensure LED fitting from a product specific 3D model available from www.ledil.com
- For more details about installation please see LEDiL Installation Guide on www.ledil.com