

VIOLET-12X1-W

~60° wide beam

SPECIFICATION:

Dimensions	294.8 x 41.6 mm
Height	8.8 mm
Fastening	screw
Ingress protection classes	IP66, IP67
ROHS compliant	yes ⓘ

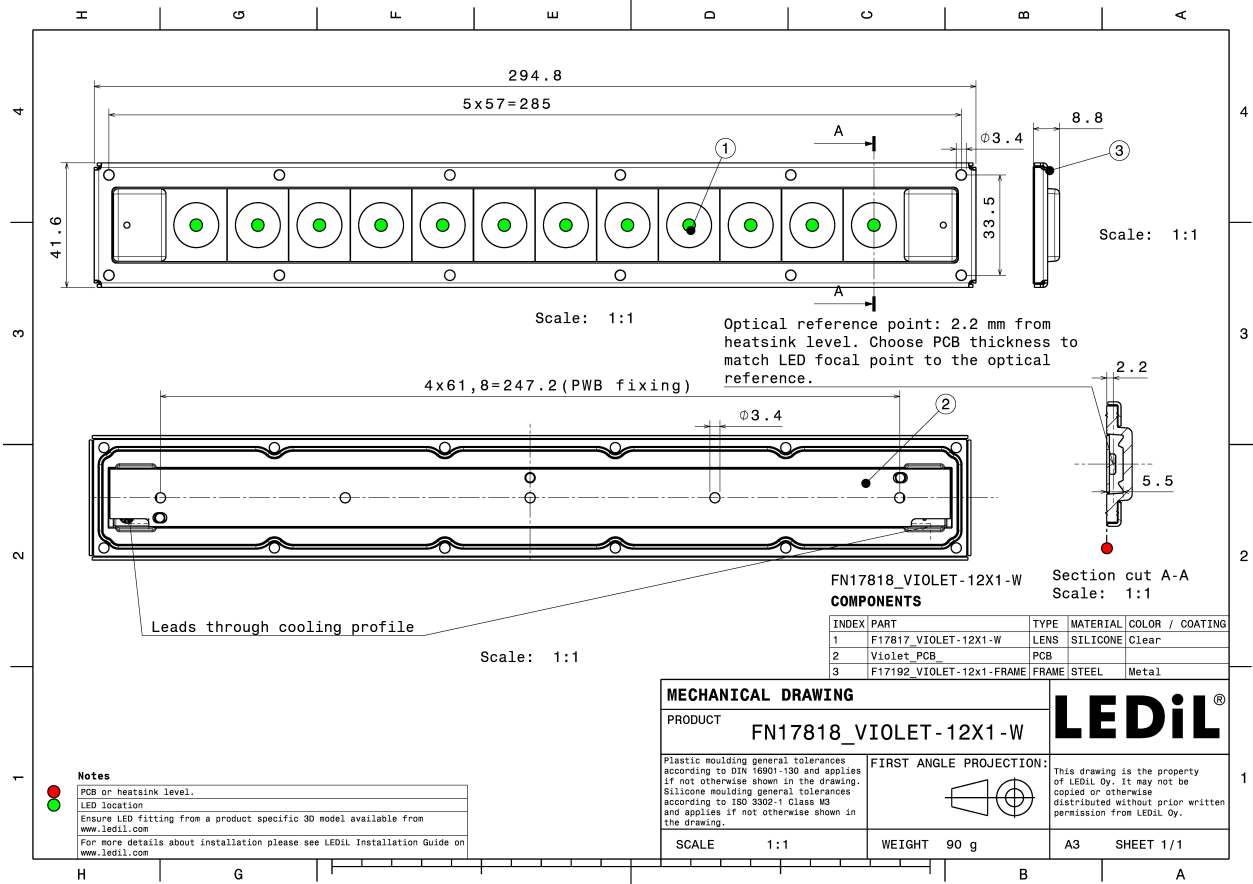
MATERIALS:

Component	Type	Material	Colour	Finish
VIOLET-12X1-W	Multi-lens	Silicone	clear	
VIOLET-12X1-FRAME	Accessory	Stainless steel	metal	



ORDERING INFORMATION:

Component		Qty in box	MOQ	MPQ	Box weight (kg)
FN17818_VIOLET-12X1-W	Multi-lens	78	26	26	7.8
» Box size: 398 x 298 x 150 mm					



See also our general installation guide: www.ledil.com/installation_guide

OPTICAL RESULTS (MEASURED):



LED LIGHT ENGINE VIOLET UVC 281 x 19.2mm (KL265-50V-SM-WD)
FWHM / FWTM 46.0° / 67.0°
Efficiency 74 %
LEDs/each optic 1
Light colour UV-C
Required components:

The UVC LED result tolerance is ± 10 %



LED CLH-N3S
FWHM / FWTM 60.0° / 79.0°
Efficiency 74 %
LEDs/each optic 1
Light colour UV-C
Required components:

The UVC LED result tolerance is ± 10 %



LED KL265-50V-SM-WD
FWHM / FWTM 55.0° / 73.0°
Efficiency 67 %
LEDs/each optic 1
Light colour UV-C
Required components:

The UVC LED result tolerance is ± 10 %



LED 110384-GC VIOLET
FWHM / FWTM 63.0° / 84.0°
Efficiency 74 %
LEDs/each optic 1
Light colour UV-C
Required components:

The UVC LED result tolerance is ± 10 %

OPTICAL RESULTS (MEASURED):



LED 110384-GM VIOLET
FWHM / FWTM 64.0° / 85.0°
Efficiency 75 %
LEDs/each optic 1
Light colour UV-C
Required components:

The UVC LED result tolerance is ± 10 %



LED LTPL-G35UV275GC-E
FWHM / FWTM 51.0° / 71.0°
Efficiency 76 %
LEDs/each optic 1
Light colour UV-C
Required components:

The UVC LED result tolerance is ± 10 %



LED LTPL-G35UV275GR-E
FWHM / FWTM 54.0° / 73.0°
Efficiency 75 %
LEDs/each optic 1
Light colour UV-C
Required components:

The UVC LED result tolerance is ± 10 %



LED LTPL-G35UVC275GH
FWHM / FWTM 55.0° / 73.0°
Efficiency 75 %
LEDs/each optic 1
Light colour UV-C
Required components:

The UVC LED result tolerance is ± 10 %

OPTICAL RESULTS (MEASURED):

LITEON

LED LTPL-G35UVC275GZ
FWHM / FWTM 53.0° / 73.0°
Efficiency 74 %
LEDs/each optic 1
Light colour UV-C
Required components:

The UVC LED result tolerance is ± 10 %

LUMINUS

LED XBT-3535-UV
FWHM / FWTM 56.0° / 75.0°
Efficiency 75 %
LEDs/each optic 1
Light colour UV-C
Required components:

The UVC LED result tolerance is ± 10 %

LUMINUS

LED XFM-5050 2 Die
FWHM / FWTM 56.0° / 76.0°
Efficiency 67 %
LEDs/each optic 1
Light colour UV-C
Required components:

The UVC LED result tolerance is ± 10 %

LUMINUS

LED XFM-5050 3 Die
FWHM / FWTM 54.0° / 77.0°
Efficiency 65 %
LEDs/each optic 1
Light colour UV-C
Required components:

The UVC LED result tolerance is ± 10 %

OPTICAL RESULTS (MEASURED):



LED XST-3535-UV
FWHM / FWTM 37.0° / 58.0°
Efficiency 77 %
LEDs/each optic 1
Light colour UV-C
Required components:

The UVC LED result tolerance is ± 10 %



LED Violet UVC LED-Modul 280nm
FWHM / FWTM 59.0° / 78.0°
Efficiency 76 %
LEDs/each optic 1
Light colour UV-C
Required components:

The UVC LED result tolerance is ± 10 %



LED NCSU334A
FWHM / FWTM 52.0° / 73.0°
Efficiency 79 %
LEDs/each optic 1
Light colour UV-C
Required components:

The UVC LED result tolerance is ± 10 %



LED NCSU334B
FWHM / FWTM 53.0° / 73.0°
Efficiency 75 %
LEDs/each optic 1
Light colour UV-C
Required components:

The UVC LED result tolerance is ± 10 %

OPTICAL RESULTS (MEASURED):

OSRAM

LED CLE LED module with UV-C (SU CULCN1.VC)
FWHM / FWTM 55.0° / 74.0°
Efficiency 58 %
LEDs/each optic 1
Light colour UV-C
Required components:

The UVC LED result tolerance is ± 10 %

OSRAM

Opto Semiconductors

LED OSLON UV 6060 (SU CZHPF1.VC)
FWHM / FWTM 56.0° / 75.0°
Efficiency 67 %
LEDs/each optic 1
Light colour UV-C
Required components:

The UVC LED result tolerance is ± 10 %

SAMSUNG

LED UV351A
FWHM / FWTM 62.0° / 79.0°
Efficiency 77 %
LEDs/each optic 1
Light colour UV-C
Required components:

The UVC LED result tolerance is ± 10 %

SAMSUNG

LED UV353B
FWHM / FWTM 65.0° / 82.0°
Efficiency 70 %
LEDs/each optic 1
Light colour UV-C
Required components:

The UVC LED result tolerance is ± 10 %

OPTICAL RESULTS (MEASURED):

SEOUL SEMICONDUCTOR	
LED	CUD7GF1B
FWHM / FWTM	48.0° / 68.0°
Efficiency	70 %
LEDs/each optic	1
Light colour	UV-C
Required components:	
The UVC LED result tolerance is ± 10 %	

SEOUL SEMICONDUCTOR	
LED	CUD7QF1A
FWHM / FWTM	43.0° / 66.0°
Efficiency	69 %
LEDs/each optic	1
Light colour	UV-C
Required components:	
The UVC LED result tolerance is ± 10 %	

SEOUL SEMICONDUCTOR	
LED	XMD-FBC-LLCA
FWHM / FWTM	51.0° / 72.0°
Efficiency	68 %
LEDs/each optic	1
Light colour	UV-C
Required components:	
The UVC LED result tolerance is ± 10 %	

SEOUL SEMICONDUCTOR	
LED	XMD-FBC-LLOA
FWHM / FWTM	50.0° / 75.0°
Efficiency	73 %
LEDs/each optic	2
Light colour	UV-C
Required components:	
The UVC LED result tolerance is ± 10 %	

OPTICAL RESULTS (MEASURED):

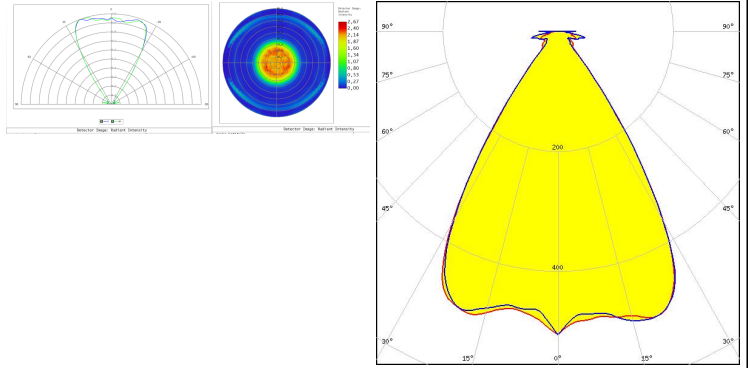
	
SEOUL SEMICONDUCTOR	
LED	XMD-FBC-LLVA
FWHM / FWTM	53.0° / 76.0°
Efficiency	70 %
LEDs/each optic	4
Light colour	UV-C
Required components:	
The UVC LED result tolerance is ± 10 %	

OPTICAL RESULTS (SIMULATED):



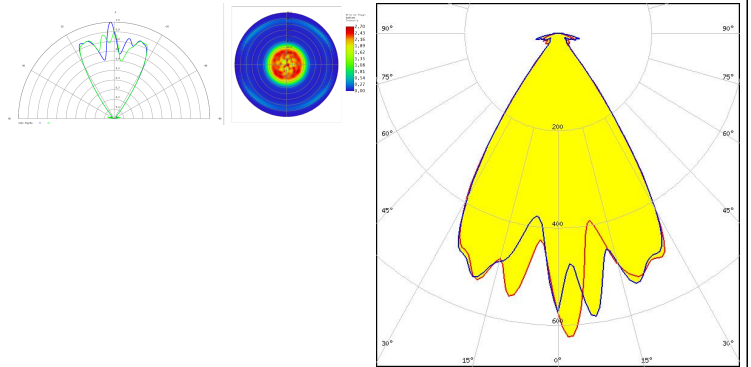
LED Bolb UV-C 6060 SMD
FWHM / FWTM 65.0° / 82.0°
Efficiency 69 %
LEDs/each optic 1
Light colour UV-C
Required components:

The UVC LED result tolerance is ±10 %



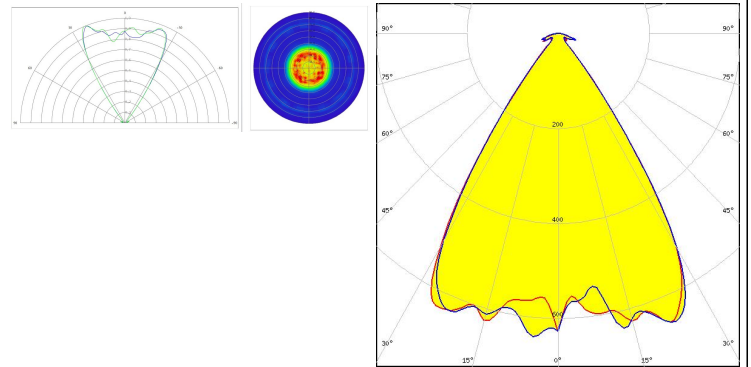
LED XBT-1313
FWHM / FWTM 63.0° / 78.0°
Efficiency 71 %
LEDs/each optic 1
Light colour UV-C
Required components:

The UVC LED result tolerance is ±10 %



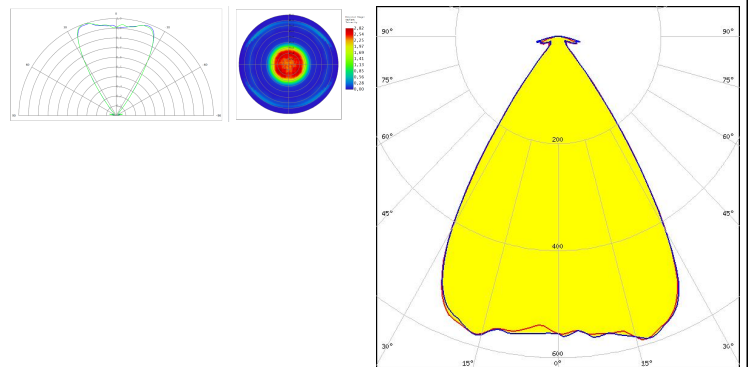
LED XBT-3535-UV
FWHM / FWTM 65.0° / 78.0°
Efficiency 80 %
LEDs/each optic 1
Light colour UV-C
Required components:

The UVC LED result tolerance is ±10 %



LED XFM-5050 2 Die
FWHM / FWTM 64.0° / 79.0°
Efficiency 74 %
LEDs/each optic 1
Light colour UV-C
Required components:

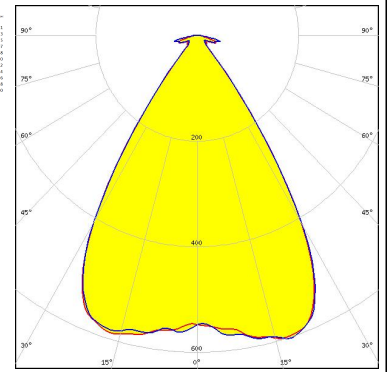
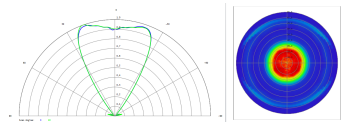
The UVC LED result tolerance is ±10 %



OPTICAL RESULTS (SIMULATED):



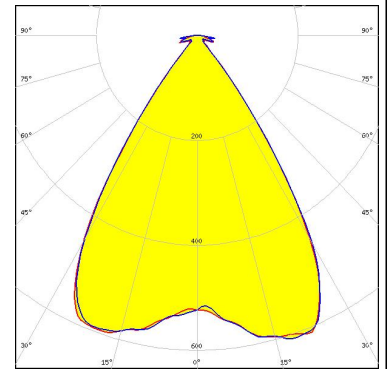
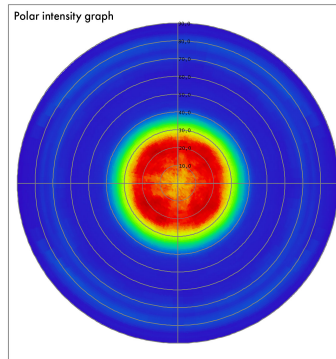
LED XFM-5050 3 Die
 FWHM / FWTM 62.0° / 79.0°
 Efficiency 75 %
 LEDs/each optic 1
 Light colour UV-C
 Required components:



The UVC LED result tolerance is ± 10 %



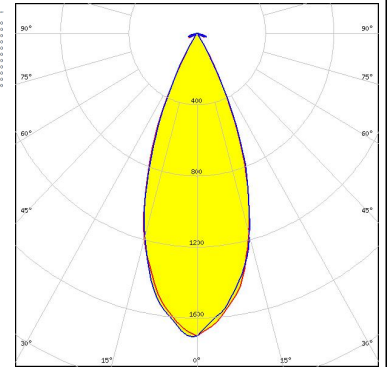
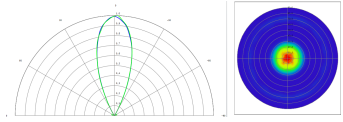
LED XFM-5050 4 Die
 FWHM / FWTM 65.0° / 79.0°
 Efficiency 76 %
 LEDs/each optic 1
 Light colour UV-C
 Required components:



The UVC LED result tolerance is ± 10 %



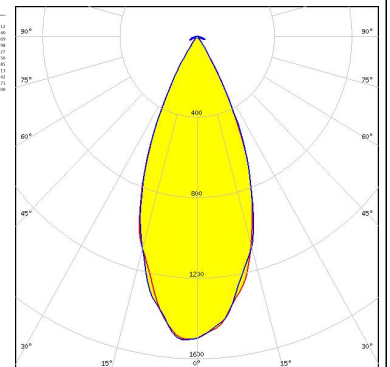
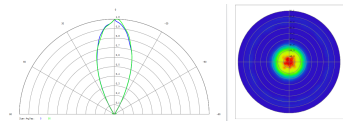
LED XST-3535-UV
 FWHM / FWTM 39.0° / 58.0°
 Efficiency 82 %
 LEDs/each optic 1
 Light colour UV-C
 Required components:



The UVC LED result tolerance is ± 10 %

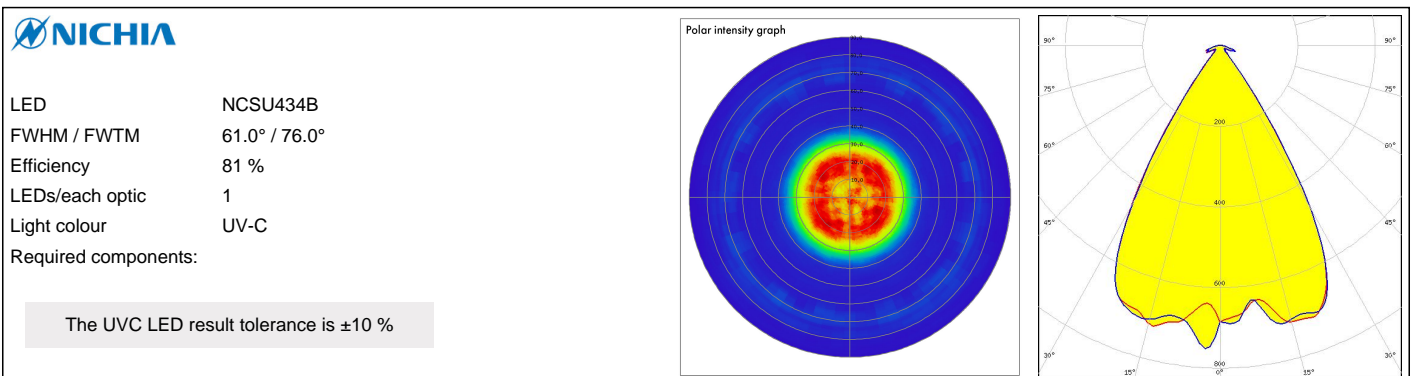
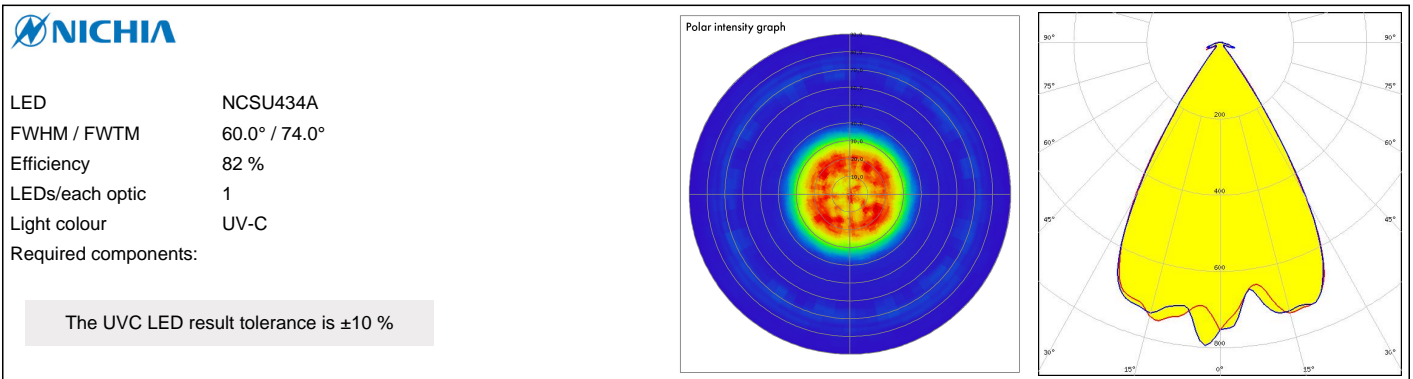
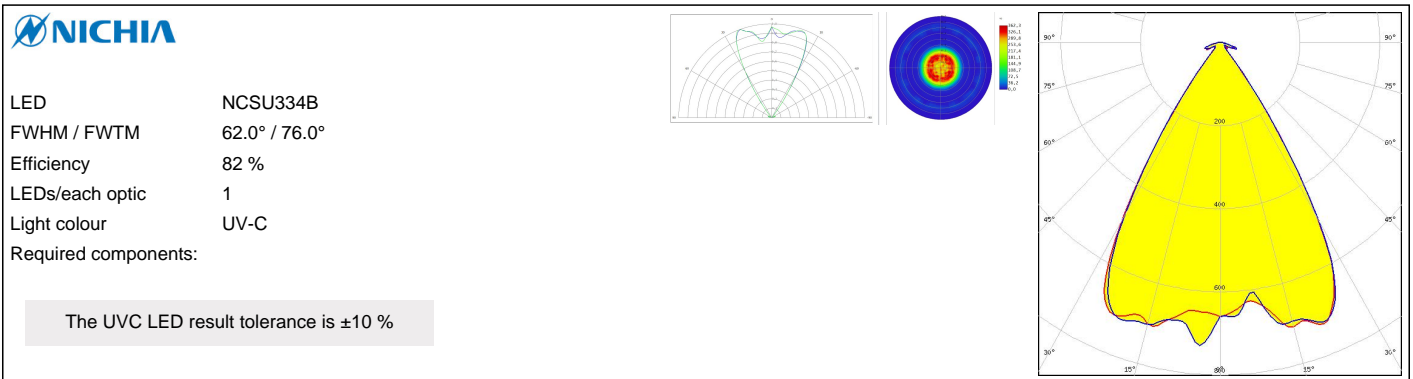
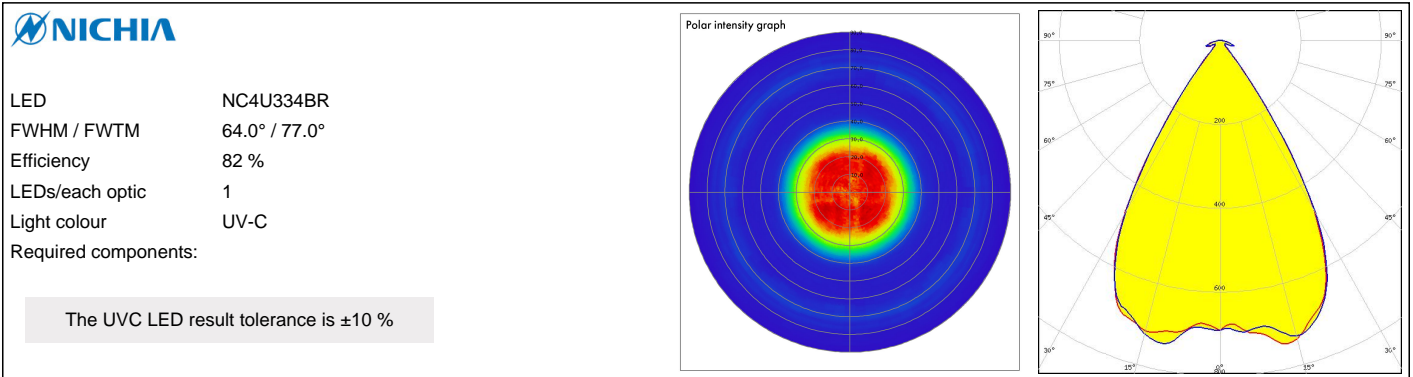


LED XST-3535-UV
 FWHM / FWTM 41.0° / 62.0°
 Efficiency 82 %
 LEDs/each optic 1
 Light colour UV-C
 Required components:

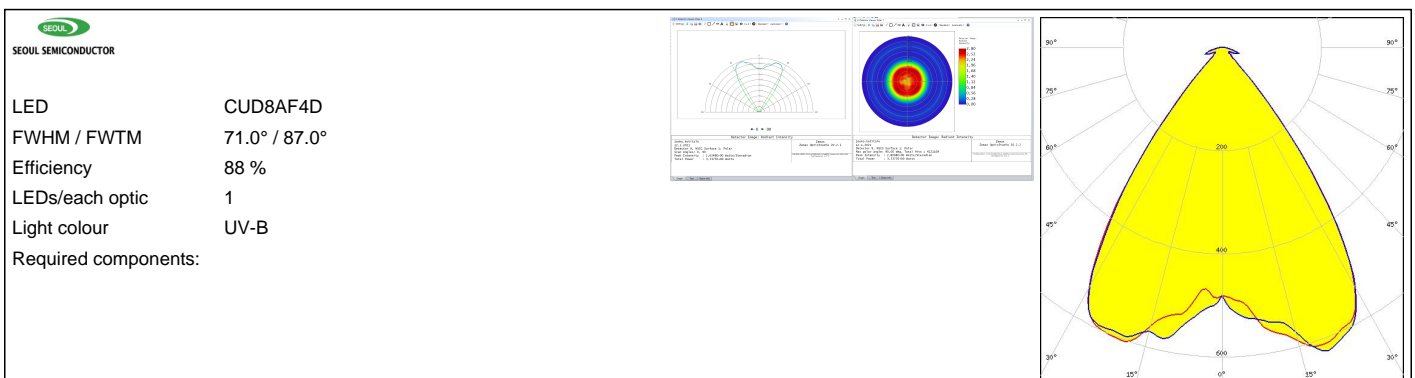
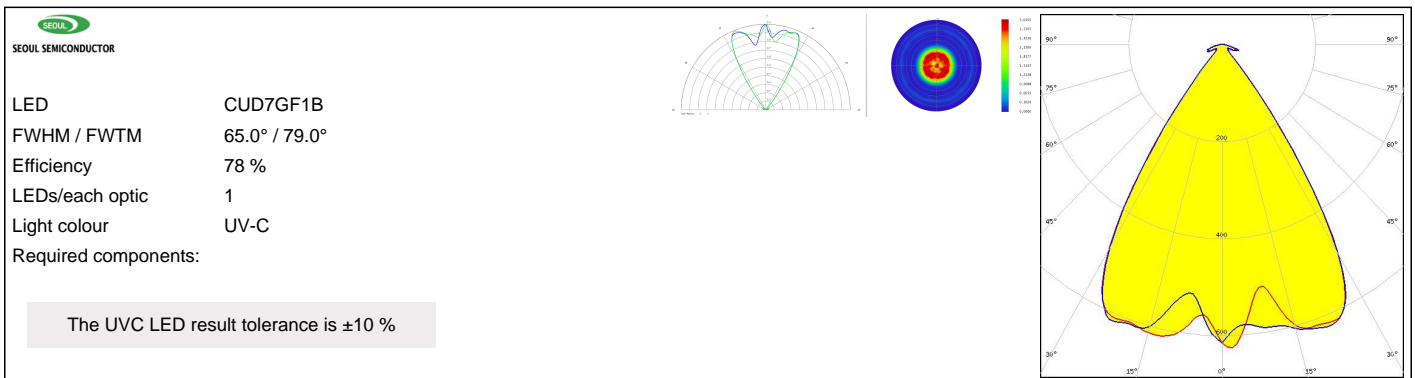
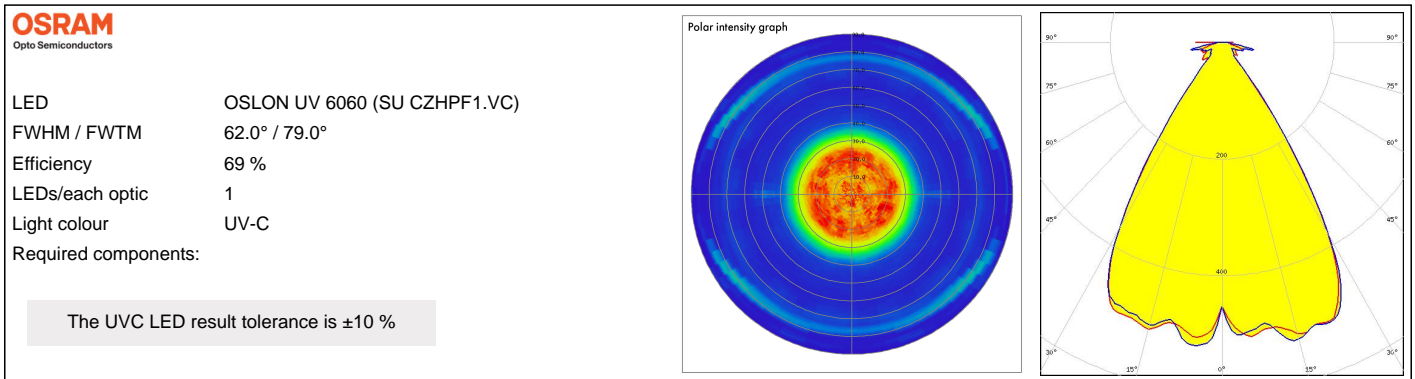
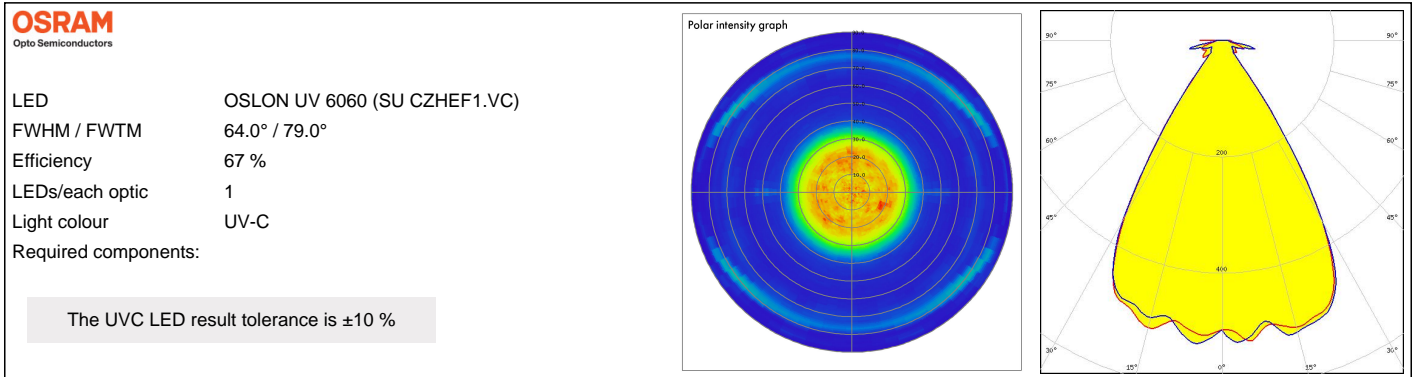


The UVC LED result tolerance is ± 10 %

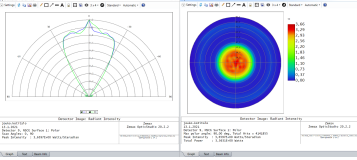
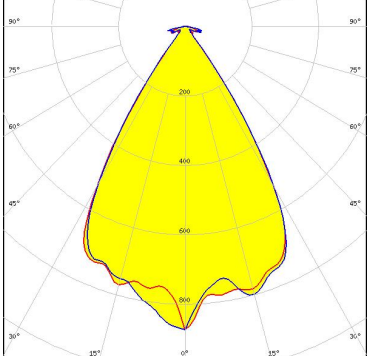
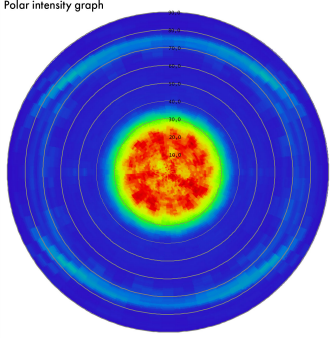
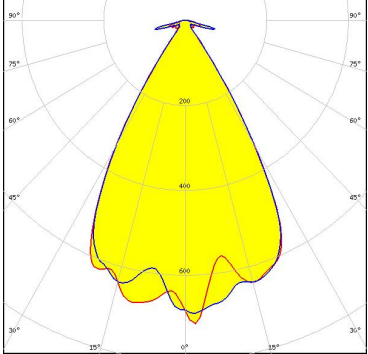
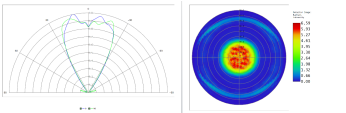
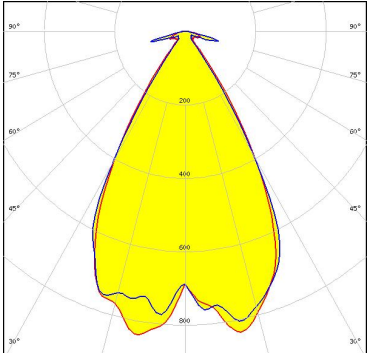
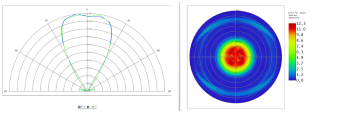
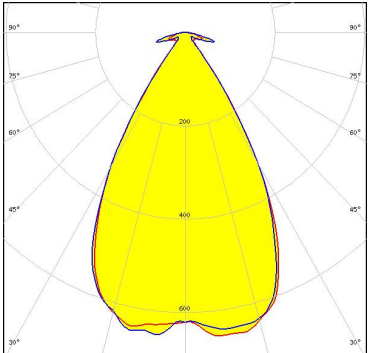
OPTICAL RESULTS (SIMULATED):



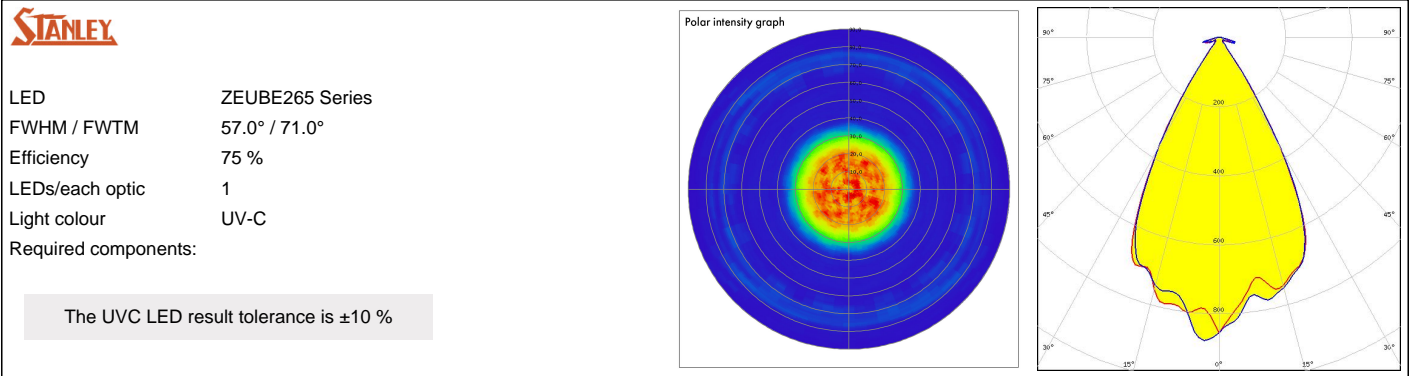
OPTICAL RESULTS (SIMULATED):



OPTICAL RESULTS (SIMULATED):

<p>SEOL SEMICONDUCTOR</p> <p>LED CUN66A1B FWHM / FWTM 62.0° / 77.0° Efficiency 89 % LEDs/each optic 1 Light colour UV-A Required components:</p>		
<p>SEOL SEMICONDUCTOR</p> <p>LED WICOP DY9560-27 FWHM / FWTM 59.0° / 73.0° Efficiency 74 % LEDs/each optic 1 Light colour UV-C Required components:</p> <p>The UVC LED result tolerance is ±10 %</p>	<p>Polar intensity graph</p> 	
<p>SEOL SEMICONDUCTOR</p> <p>LED WICOP DY9560-27 FWHM / FWTM 57.0 + 59.0° / 72.0 + 76.0° Efficiency 73 % LEDs/each optic 2 Light colour UV-C Required components:</p> <p>The UVC LED result tolerance is ±10 %</p>		
<p>SEOL SEMICONDUCTOR</p> <p>LED WICOP DY9560-27 FWHM / FWTM 59.0° / 77.0° Efficiency 73 % LEDs/each optic 4 Light colour UV-C Required components:</p> <p>The UVC LED result tolerance is ±10 %</p>		

OPTICAL RESULTS (SIMULATED):



GENERAL INFORMATION:

NOTE: The typical beam angle will be changed by different color, chip size and chip position tolerance. The typical total beam angle is the full angle measured where the luminous intensity is half of the peak value.

MATERIALS:

As part of our continuous research and improvement processes, and to ensure the best possible quality and availability of our products, LEDiL reserves the right to change material grades without notice.

PRODUCT DATA USER AGREEMENT AND DISCLAIMER:

The measured data in the provided downloadable LEDiL Product Datasheets and Mechanical 2D-Drawings is rounded and provided as reference for planning. LEDiL Oy's optical specifications have been verified by conducting performance testing of the products in accordance with the company's quality system. The reported data are averaged results of multiple measurements with typical variation. LEDiL Oy reserves the right to without prior notification make changes and improvements to its products.

LEDiL Oy assumes neither warranty, nor guarantee nor any other liability of any kind for the contents and correctness of the provided data. The provided data has been generated with highest diligence but the provided data may in reality not represent the complete possible variation range of all intrinsic parameters. Therefore, in certain cases a deviation from the provided data could occur.

LEDiL Oy reserves the right to undertake technical changes of its products without further notification which could lead to changes in the provided data. LEDiL Oy assumes no liability of any kind for the possible deviation from any provided data or any other damage resulting from the usage of the provided data.

The user agrees to this disclaimer and user agreement with the download or usage of the provided files.

LEDiL Oy

Joensuunkatu 13
FI-24240 SALO
Finland

LEDiL Inc.

228 West Page Street
Suite D
Sycamore IL 60178
USA

Ledil Optics Technology (Shenzhen) Co., Ltd.

405 , Block B
Casic Motor Building
Shenzhen 518057
P.R.CHINA

Local sales and technical support

[www.ledil.com/
where_to_buy](http://www.ledil.com/where_to_buy)

Shipping locations

Salo, Finland
Hong Kong, China

Distribution Partners

[www.ledil.com/
where_to_buy](http://www.ledil.com/where_to_buy)