

## VERONICA-SQ-WG

Narrow asymmetric spot beam for wall grazing

### SPECIFICATION:

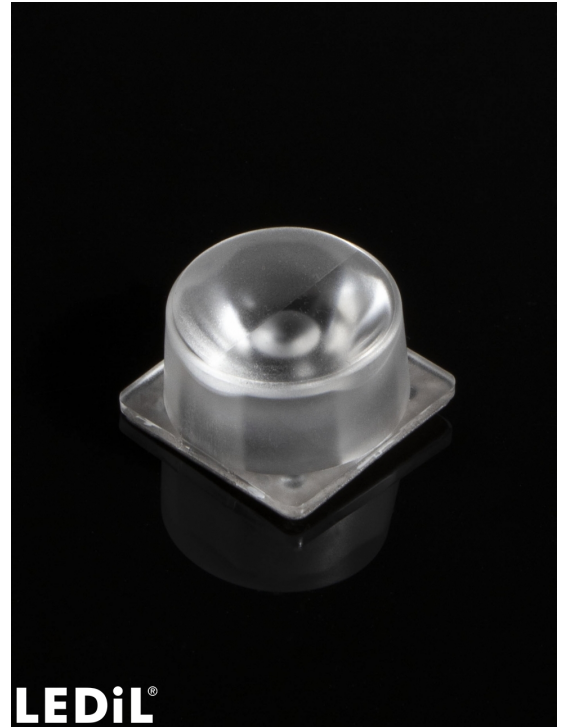
Dimensions	Ø 22.5
Height	13.6 mm
Fastening	tape, pin
ROHS compliant	yes ⓘ

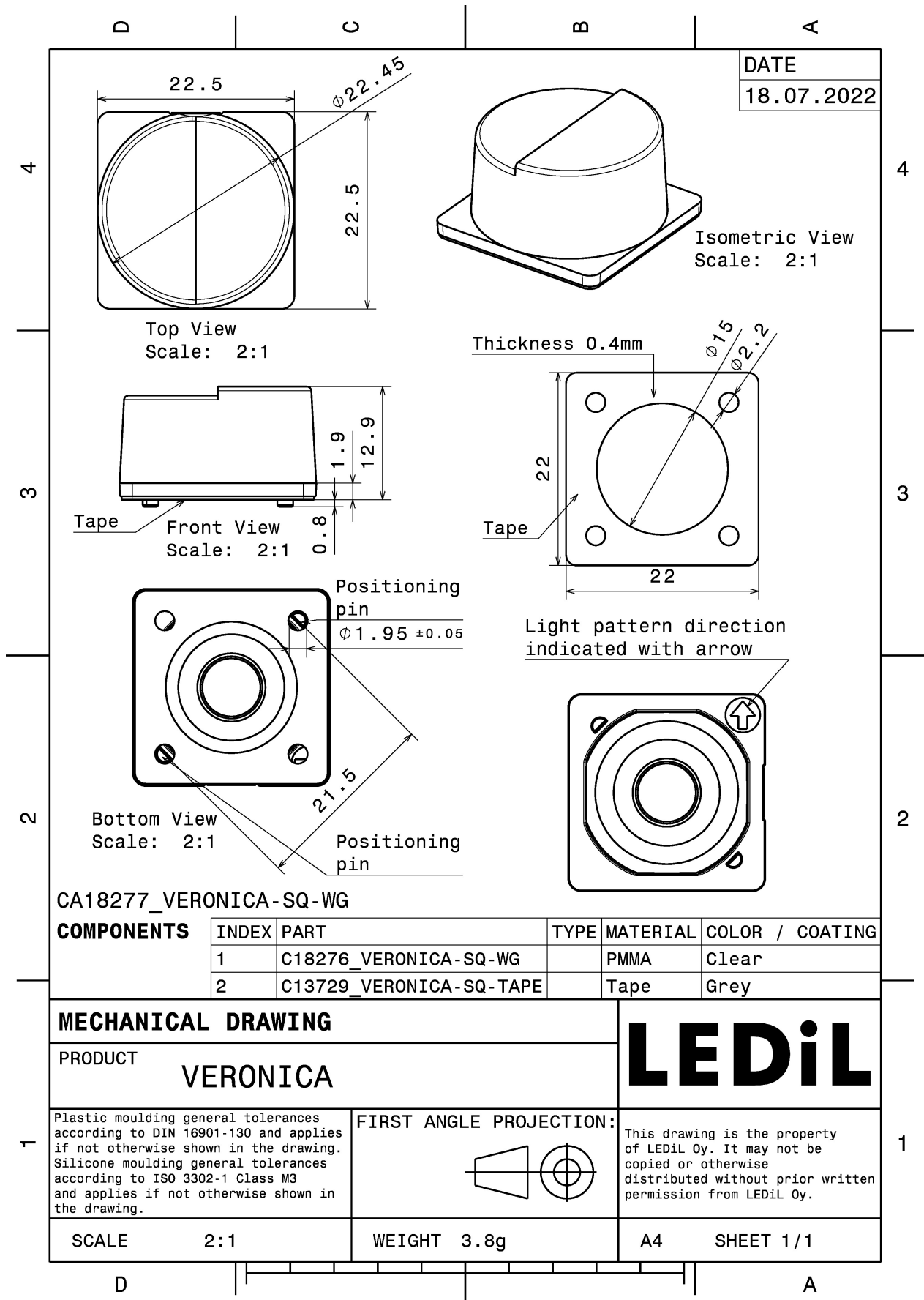
### MATERIALS:

Component	Type	Material	Colour	Finish	Length
VERONICA-SQ-WG	Single lens	PMMA	clear	matt	22.5
VERONICA-TAPE	Tape	Acrylic foam	clear		22.0

### ORDERING INFORMATION:

Component		Qty in box	MOQ	MPQ	Box weight (kg)
CA18277_VERONICA-SQ-WG	Single lens	1980	360	180	8.4
» Box size: 476 x 273 x 197 mm					



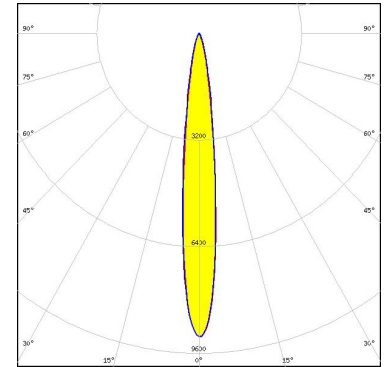


See also our general installation guide: [www.ledil.com/installation\\_guide](http://www.ledil.com/installation_guide)

#### OPTICAL RESULTS (MEASURED):



LED XT-E  
FWHM / FWTM Asymmetric  
Efficiency 91 %  
Peak intensity 9.1 cd/lm  
LEDs/each optic 1  
Light colour/type White  
Required components:

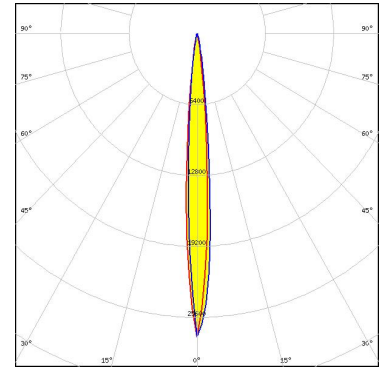


Light distribution files

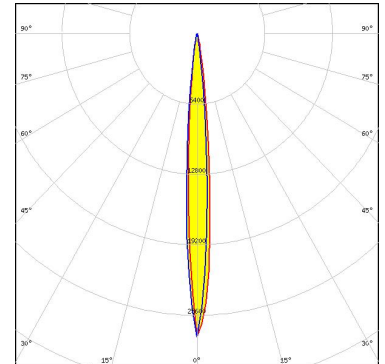
#### OPTICAL RESULTS (SIMULATED):



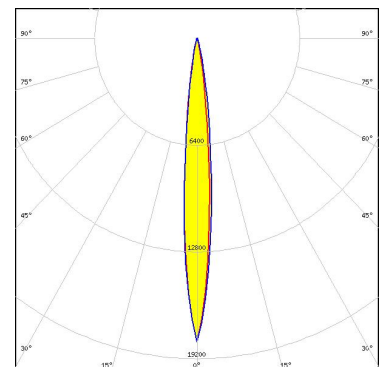
LED XP-P  
FWHM / FWTM Asymmetric  
Efficiency 96 %  
Peak intensity 27.3 cd/lm  
LEDs/each optic 1  
Light colour/type White  
Required components:



LED XQ-E HI  
FWHM / FWTM Asymmetric  
Efficiency 96 %  
Peak intensity 27.6 cd/lm  
LEDs/each optic 1  
Light colour/type White  
Required components:



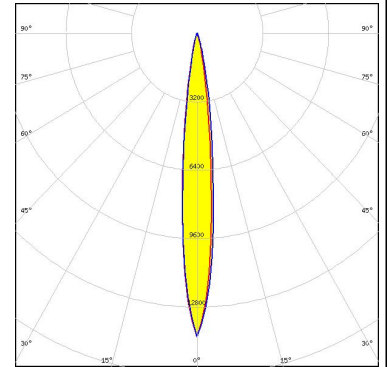
LED NCSxE17A  
FWHM / FWTM Asymmetric  
Efficiency 96 %  
Peak intensity 18.2 cd/lm  
LEDs/each optic 1  
Light colour/type White  
Required components:



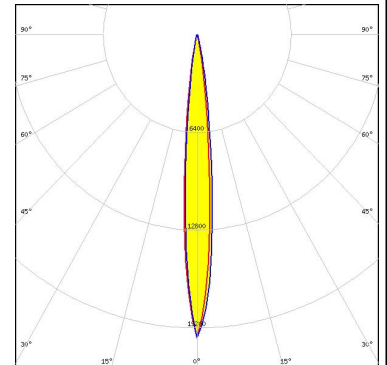
### OPTICAL RESULTS (SIMULATED):



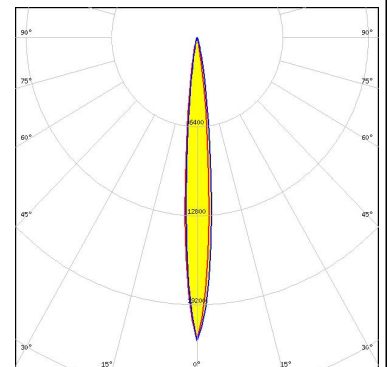
LED NVSxE21A  
FWHM / FWTM Asymmetric  
Efficiency 96 %  
Peak intensity 14.2 cd/lm  
LEDs/each optic 1  
Light colour/type White  
Required components:



LED SYNIOS S2222  
FWHM / FWTM Asymmetric  
Efficiency 96 %  
Peak intensity 19.9 cd/lm  
LEDs/each optic 1  
Light colour/type Blue  
Required components:



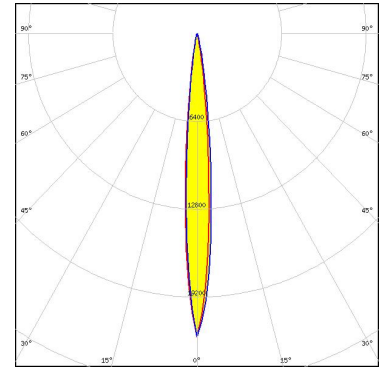
LED SYNIOS S2222  
FWHM / FWTM Asymmetric  
Efficiency 96 %  
Peak intensity 21.8 cd/lm  
LEDs/each optic 1  
Light colour/type Red  
Required components:



#### OPTICAL RESULTS (SIMULATED):

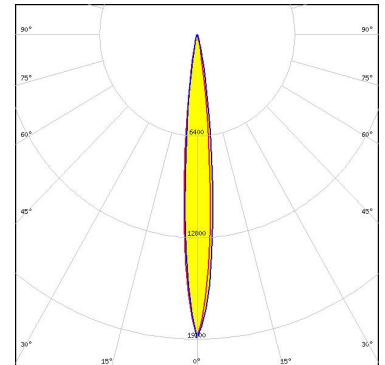
**OSRAM**  
Opto Semiconductors

LED SYNIOS S2222  
 FWHM / FWTM Asymmetric  
 Efficiency 96 %  
 Peak intensity 22.1 cd/lm  
 LEDs/each optic 1  
 Light colour/type Yellow  
 Required components:



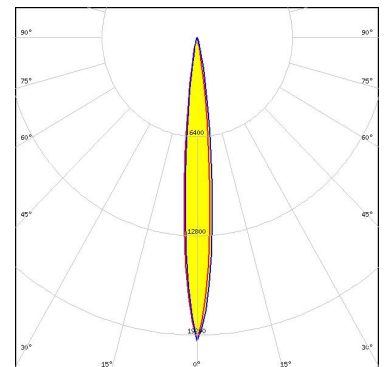
**OSRAM**  
Opto Semiconductors

LED SYNIOS S2222  
 FWHM / FWTM Asymmetric  
 Efficiency 96 %  
 Peak intensity 19.1 cd/lm  
 LEDs/each optic 1  
 Light colour/type Blue  
 Required components:



**OSRAM**  
Opto Semiconductors

LED SYNIOS S2222  
 FWHM / FWTM Asymmetric  
 Efficiency 96 %  
 Peak intensity 19.6 cd/lm  
 LEDs/each optic 1  
 Light colour/type Green  
 Required components:



### GENERAL INFORMATION:

NOTE: The typical beam angle will be changed by different color, chip size and chip position tolerance. The typical total beam angle is the full angle measured where the luminous intensity is half of the peak value.

### MATERIALS:

As part of our continuous research and improvement processes, and to ensure the best possible quality and availability of our products, LEDiL reserves the right to change material grades without notice.

### PRODUCT DATA USER AGREEMENT AND DISCLAIMER:

The measured data in the provided downloadable LEDiL Product Datasheets and Mechanical 2D-Drawings is rounded and provided as reference for planning. LEDiL Oy's optical specifications have been verified by conducting performance testing of the products in accordance with the company's quality system. The reported data are averaged results of multiple measurements with typical variation. LEDiL Oy reserves the right to without prior notification make changes and improvements to its products.

LEDiL Oy assumes neither warranty, nor guarantee nor any other liability of any kind for the contents and correctness of the provided data. The provided data has been generated with highest diligence but the provided data may in reality not represent the complete possible variation range of all intrinsic parameters. Therefore, in certain cases a deviation from the provided data could occur.

LEDiL Oy reserves the right to undertake technical changes of its products without further notification which could lead to changes in the provided data. LEDiL Oy assumes no liability of any kind for the possible deviation from any provided data or any other damage resulting from the usage of the provided data.

The user agrees to this disclaimer and user agreement with the download or usage of the provided files.

#### LEDiL Oy

Joensuunkatu 13  
FI-24240 SALO  
Finland

#### LEDiL Inc.

228 West Page Street  
Suite D  
Sycamore IL 60178  
USA

#### Ledil Optics Technology (Shenzhen) Co., Ltd.

# 405 , Block B  
Casic Motor Building  
Shenzhen 518057  
P.R.CHINA

#### Local sales and technical support

[www.ledil.com/  
where\\_to\\_buy](http://www.ledil.com/where_to_buy)

#### Shipping locations

Salo, Finland  
Hong Kong, China

#### Distribution Partners

[www.ledil.com/  
where\\_to\\_buy](http://www.ledil.com/where_to_buy)