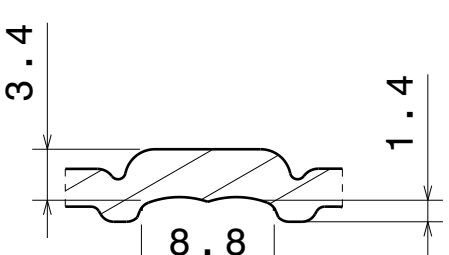
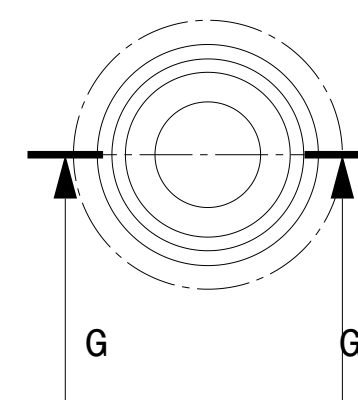


Bottom view
Scale: 1:1

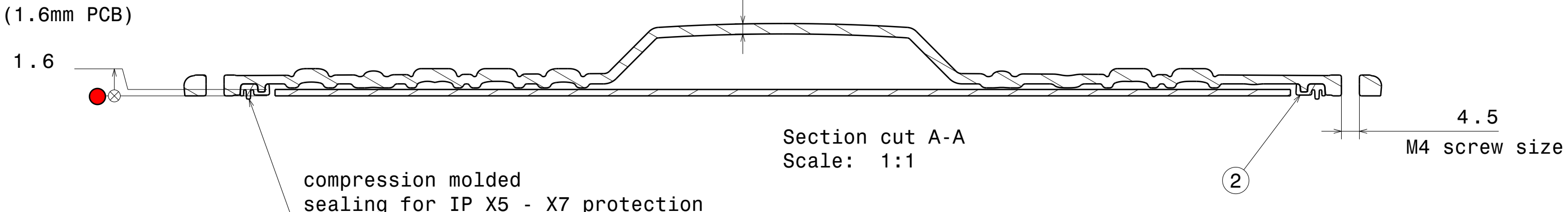


Section cut G-G
Scale: 2:1

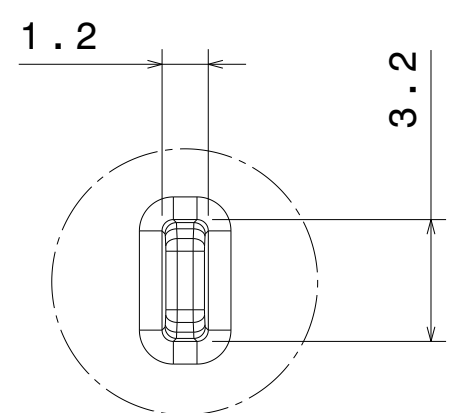


Detail F
Scale: 2:1

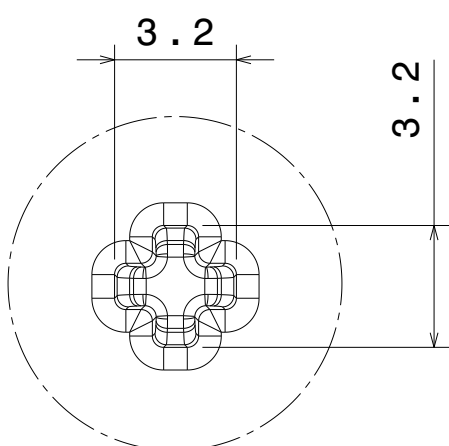
Silicone seal is tested to work in LEDiL test assemblies. Customer is recommended to test the sealing in the end product due many variables, such as heat sink surface and possible chemical traces



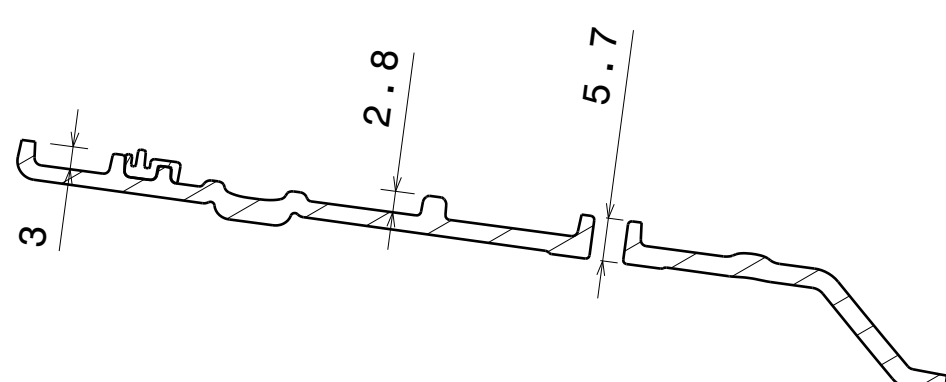
Section cut A-A
Scale: 1:1



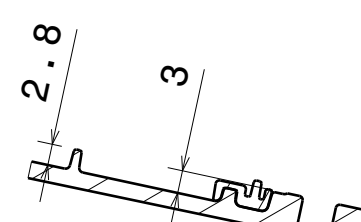
Detail C
Scale: 5:1



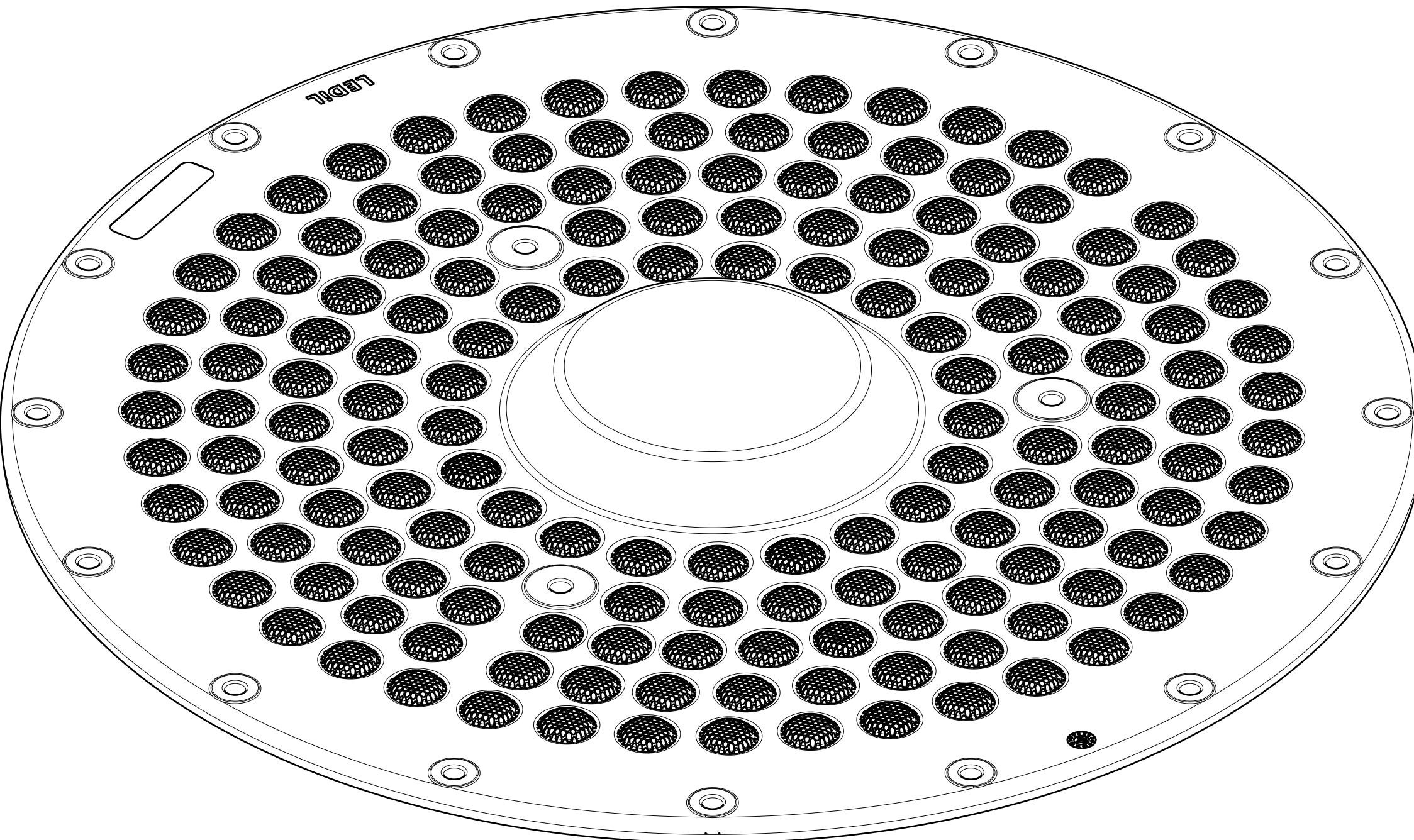
Detail B
Scale: 5:1



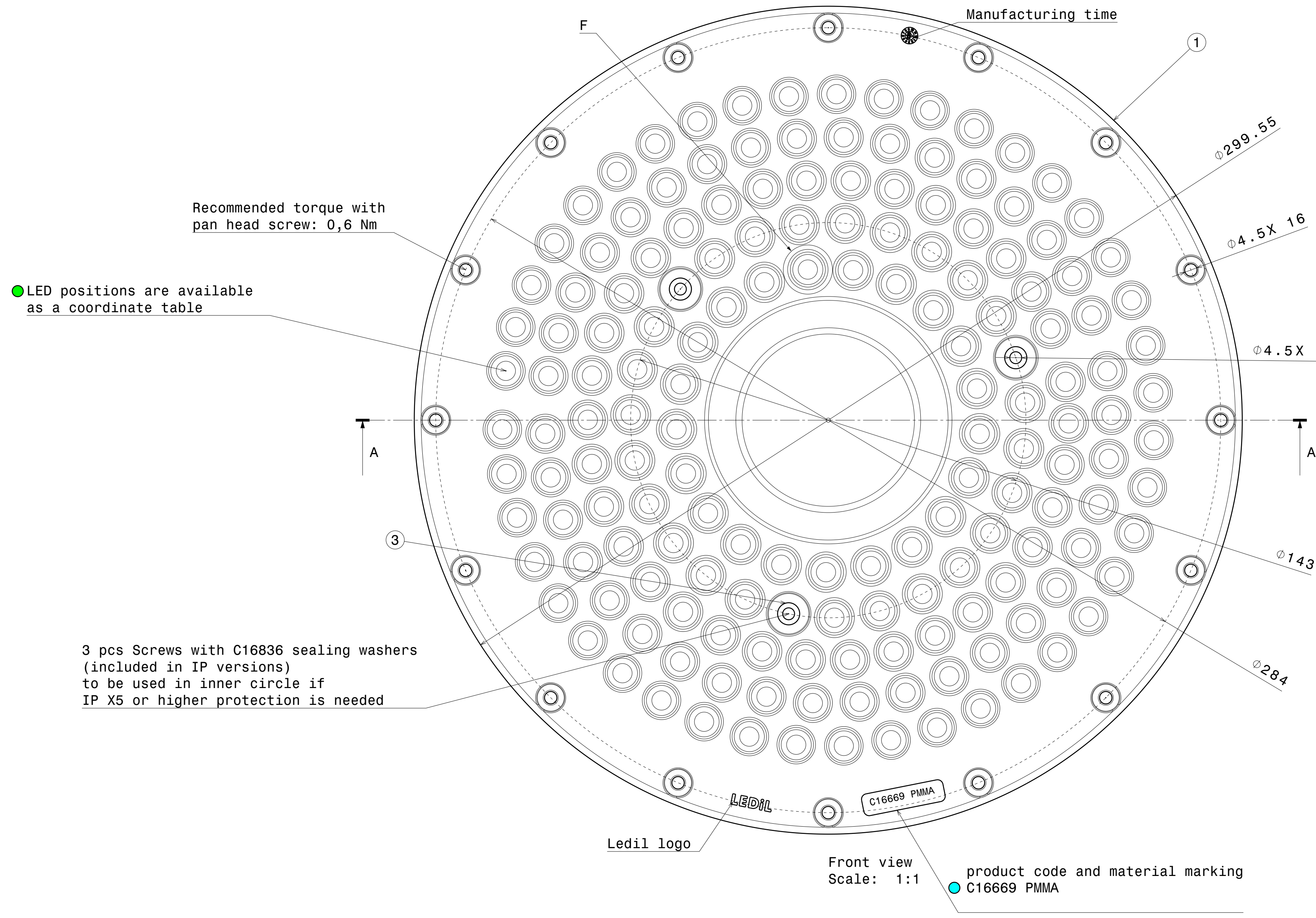
Section cut D-D
Scale: 1:1



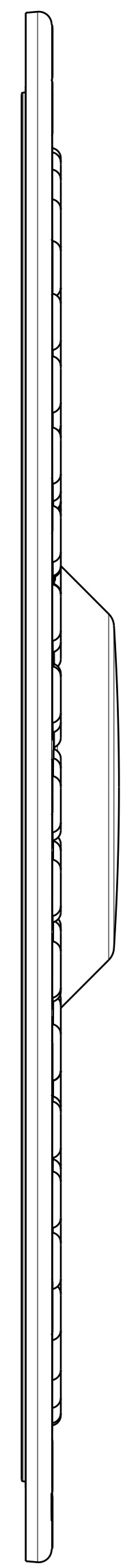
Section cut E-E
Scale: 1:1



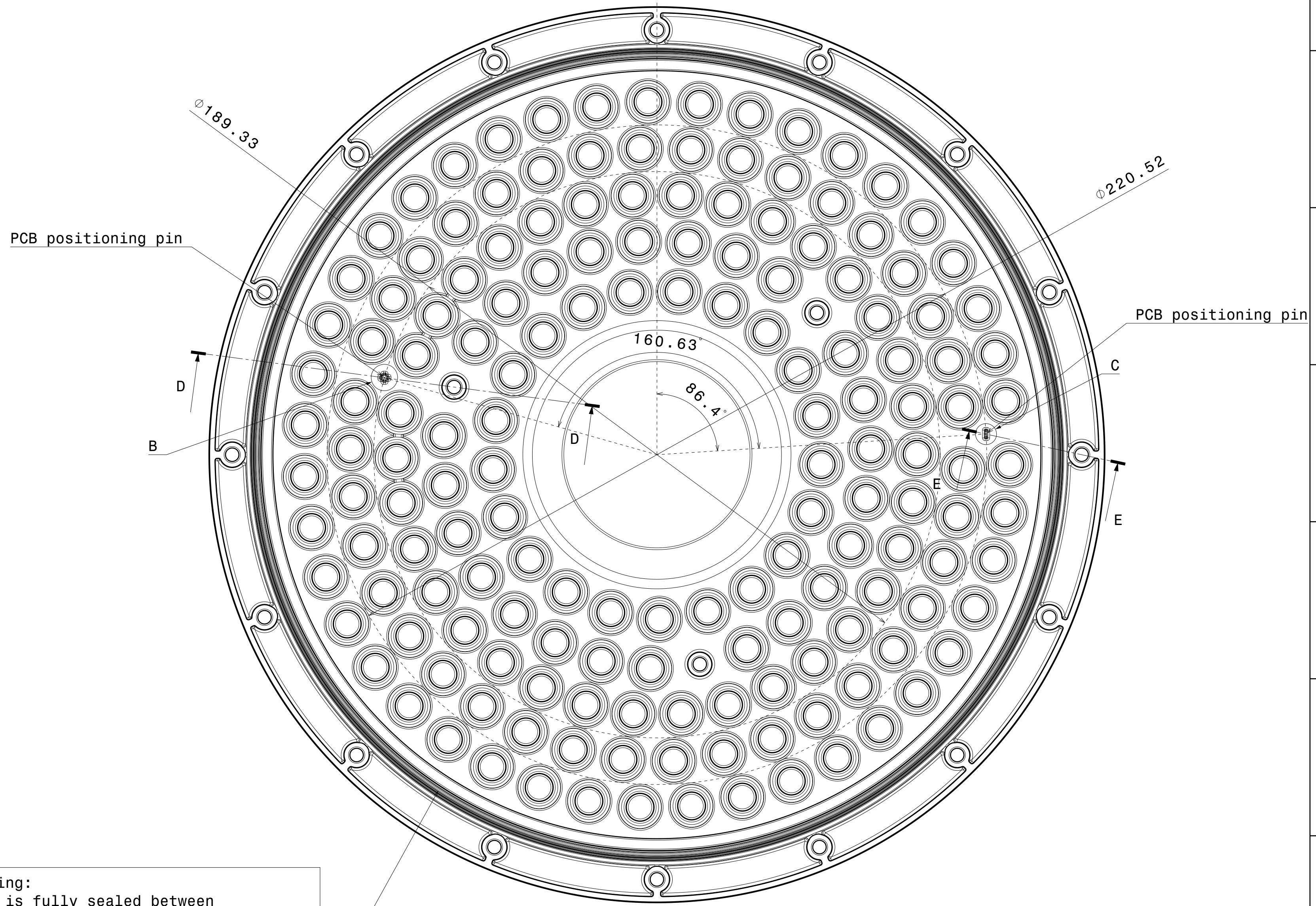
Isometric view
Scale: 1:1



Front view
Scale: 1:1



Left view
Scale: 1:1




Rear view
Scale: 1:1

Notes
● PCB or heatsink level.
● LED location
Ensure LED fitting from a product specific 3D model available from www.ledil.com
For more details about installation please see LEDiL Installation Guide on www.ledil.com

Wiring:
PCB is fully sealed between the lens with silicone seal and the heatsink. Wiring needs to be done through the PCB and heatsink to maintain IP rating

INDEX	Pcs	PART	TYPE	MATERIAL	COLOR / COATING
1	1	C16669_VICTORIA-WWW	Lens	PMMA	Clear
2	1	C16805_VICTORIA-SEAL	Seal	Silicone	White
3	3	C16836_VICTORIA-O-RING	Seal	PA	Clear

MECHANICAL DRAWING			LEDiL®
PRODUCT			
CS16839_VICTORIA-IP-WWW			
Plastic moulding general tolerances according to DIN 16801-100 and applies if not otherwise shown in the drawing. Silicone moulding general tolerances according to ISO 20457-1 Class M0 and applies if not otherwise shown in the drawing.		FIRST ANGLE PROJECTION: 	This drawing is the property of LEDiL Oy. It may not be reproduced or distributed without prior written permission from LEDiL Oy.
SCALE	1:1	WEIGHT	229g
			A0 SHEET 1/1