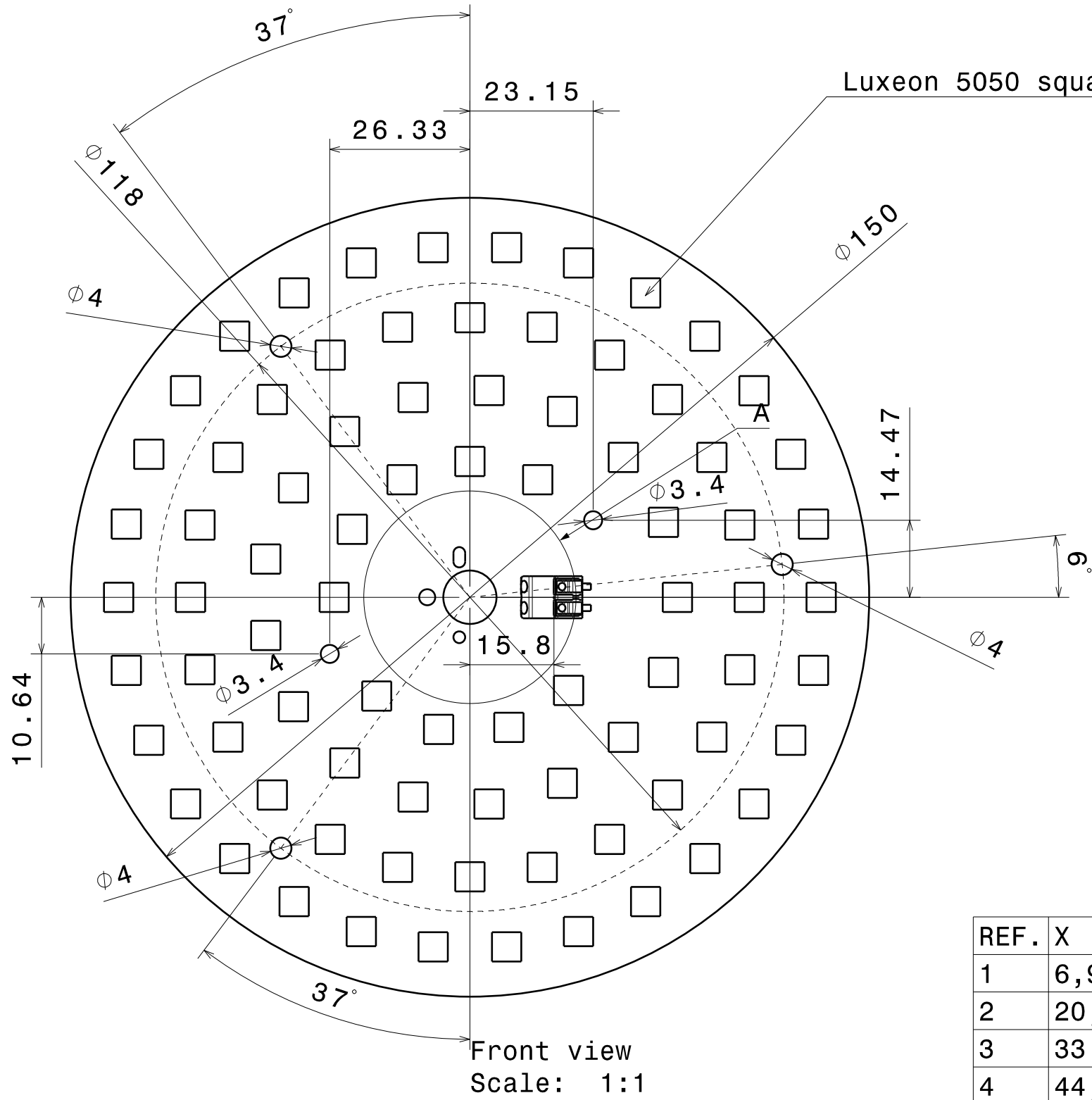
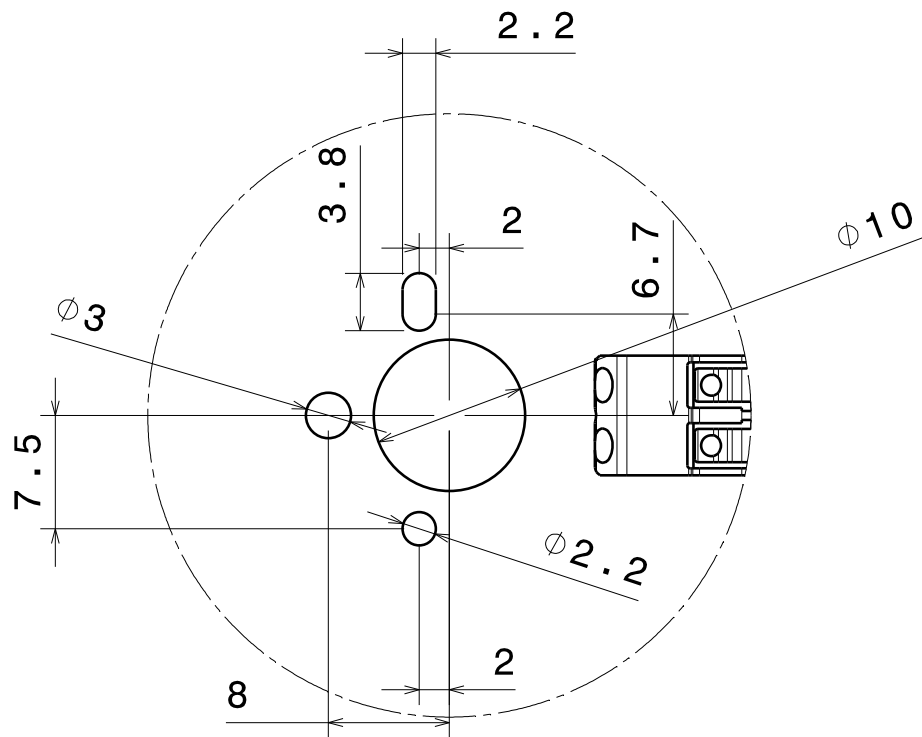


REV	DATE	DESCRIPTION	Done by	Checked by
003	03.03.2022	Increased PCB fixing holes	OS	

Luxeon 5050 square LES (80 pcs)

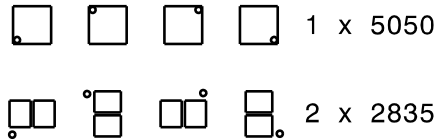


Front view
Scale: 1:1



Detail A
Scale: 2:1

It is recommended to rotate LED
from position to position.



REF.	X	Y
1	6,9	65,64
2	20,4	62,77
3	33	57,16
4	44,16	49,05
5	53,4	38,79
6	60,29	26,84
7	64,56	13,72
8	66	0
9	64,56	-13,72
10	60,29	-26,84
11	53,4	-38,79
12	44,16	-49,05
13	33	-57,16
14	20,4	-62,77
15	6,9	-65,64
16	-6,9	-65,64
17	-20,4	-62,77
18	-33	-57,16
19	-44,16	-49,05
20	-53,4	-38,79
21	-60,29	-26,84
22	-64,56	-13,72
23	-66	0
24	-64,56	13,72
25	-60,29	26,84
26	-53,4	38,79
27	-44,16	49,05
28	-33	57,16
29	-20,4	62,77
30	-6,9	65,64

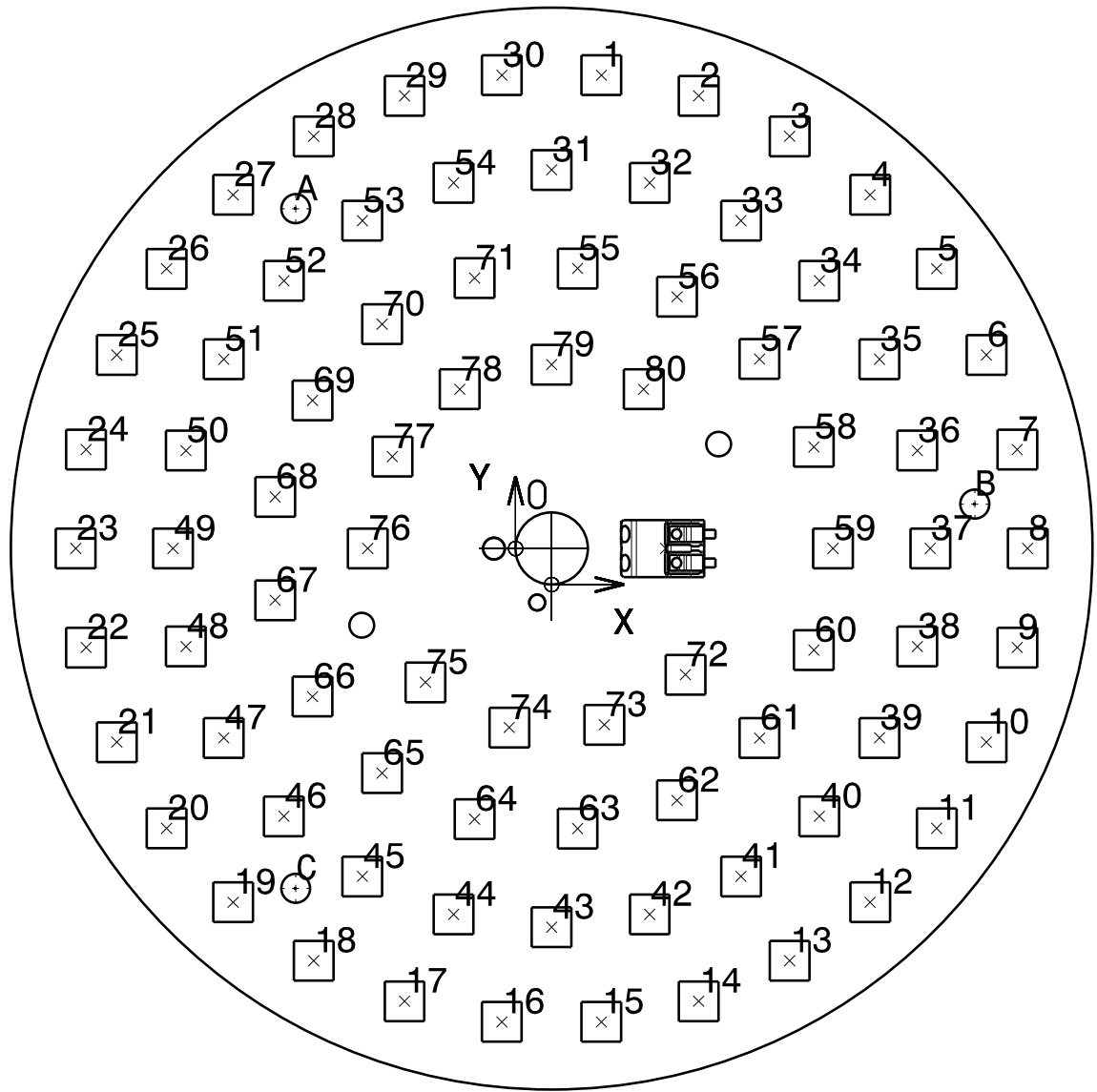
REF.	X	Y
31	0	52,5
32	13,59	50,71
33	26,25	45,47
34	37,12	37,12
35	45,47	26,25
36	50,71	13,59
37	52,5	0
38	50,71	-13,59
39	45,47	-26,25
40	37,12	-37,12
41	26,25	-45,47
42	13,59	-50,71
43	0	-52,5
44	-13,59	-50,71
45	-26,25	-45,47
46	-37,12	-37,12
47	-45,47	-26,25
48	-50,71	-13,59
49	-52,5	0
50	-50,71	13,59
51	-45,47	26,25
52	-37,12	37,12
53	-26,25	45,47
54	-13,59	50,71

REF.	X	Y
55	3,6	38,83
56	17,38	34,91
57	28,82	26,27
58	36,37	14,09
59	39	0
60	36,37	-14,09
61	28,82	-26,27
62	17,38	-34,91
63	3,6	-38,83
64	-10,67	-37,51
65	-23,5	-31,12
66	-33,16	-20,53
67	-38,34	-7,17
68	-38,34	7,17
69	-33,16	20,53
70	-23,5	31,12
71	-10,67	37,51

REF.	X	Y
72	18,55	-17,5
73	7,31	-24,43
74	-5,88	-24,81
75	-17,5	-18,55
76	-25,5	0
77	-22,08	12,75
78	-12,75	22,08
79	0	25,5
80	12,75	22,08

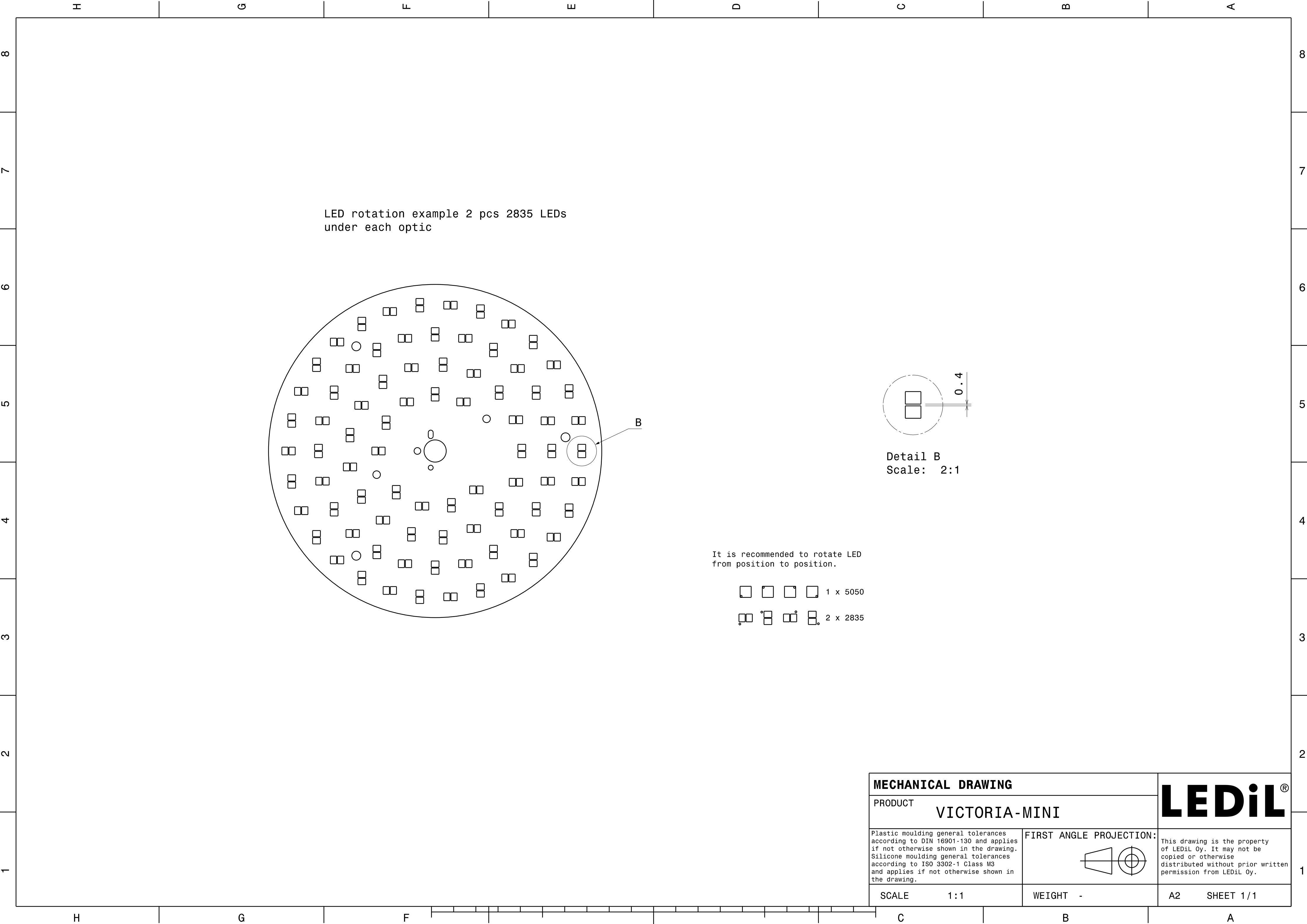
Screw holes

REF.	X	Y
A	-35,51	47,12
B	58,68	6,17
C	-35,51	-47,12

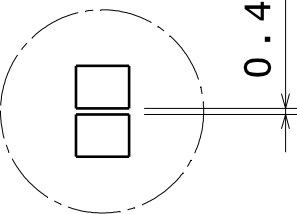


Front view
Scale: 1:1

Right view
Scale: 1:1



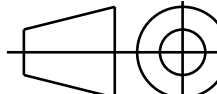
LED rotation example 2 pcs 2835 LEDs
under each optic



Detail B
Scale: 2:1

It is recommended to rotate LED
from position to position.

- 1 x 5050
- 2 x 2835

MECHANICAL DRAWING		LEDiL®
PRODUCT VICTORIA-MINI		
Plastic moulding general tolerances according to DIN 16901-130 and applies if not otherwise shown in the drawing. Silicone moulding general tolerances according to ISO 3302-1 Class M3 and applies if not otherwise shown in the drawing.	FIRST ANGLE PROJECTION: 	This drawing is the property of LEDiL Oy. It may not be copied or otherwise distributed without prior written permission from LEDiL Oy.
SCALE 1:1	WEIGHT -	A2 SHEET 1/1