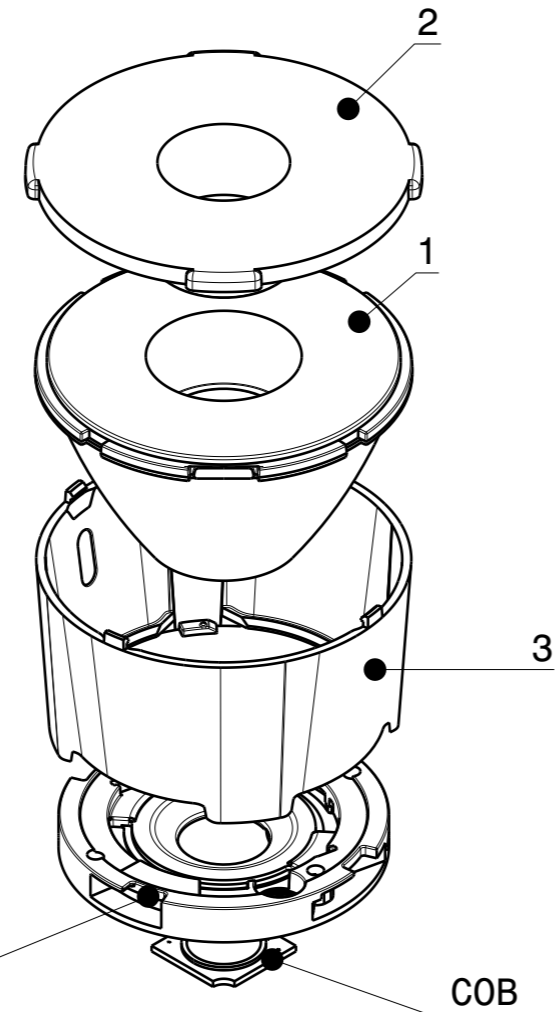
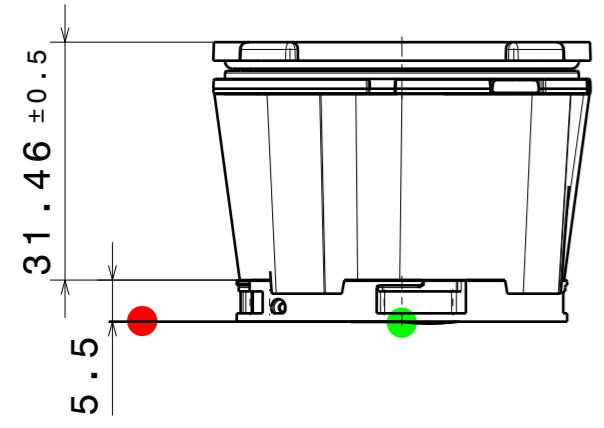


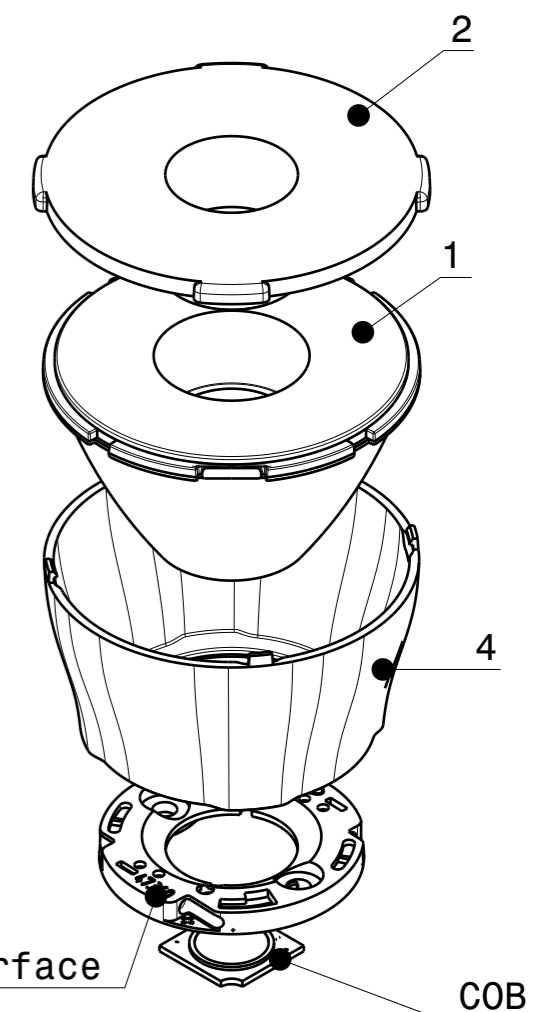
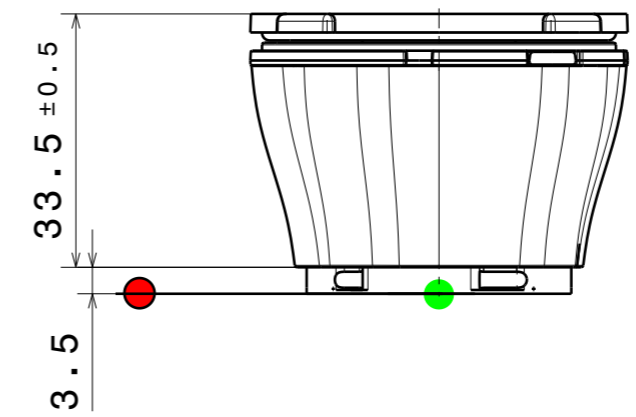
CP18728_YASMEEN-50-ZOOM-C2
CP18742_YASMEEN-50-ZOOM-C2-WHT



HEKLA
Connector

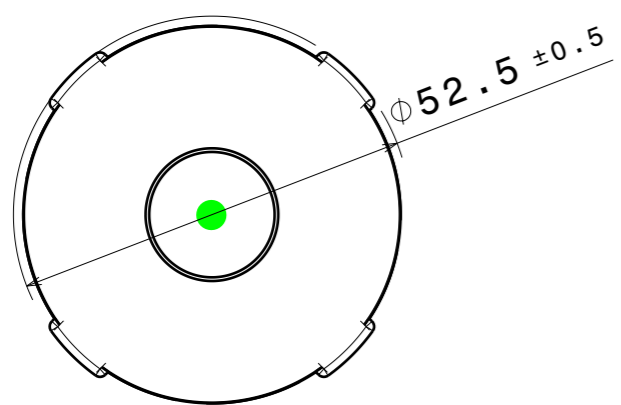
COB

CP18735_YASMEEN-50-ZOOM-B2
CP18749_YASMEEN-50-ZOOM-B2-WHT



Connector
BJB / B+W 35mm-interface

COB



Top view
Scale: 1:1

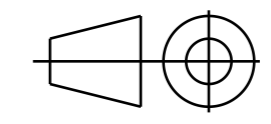
INDEX	PART	TYPE	QTY	MATERIAL	COLOUR/COATING	ASSEMBLY CODES
1	C17735_YASMEEN-50-ZOOM	LENS	1	PMMA	CLEAR	
2	C17769_YASMEEN-50-ZOOM-SUB	SUBLENS	1	PMMA	CLEAR	
3	HOLDER C	HOLDER	1			
	C18691_YASMEEN-50-HLD2-C			PC	BLACK	CP18728_YASMEEN-50-ZOOM-C2
	C18715_YASMEEN-50-HLD2-C-WHT			PC	WHITE	CP18742_YASMEEN-50-ZOOM-C2-WHT
4	HOLDER B					
	C18694_YASMEEN-50-HLD2-B			PC	BLACK	CP18735_YASMEEN-50-ZOOM-B2
	C18716_YASMEEN-50-HLD2-B-WHT			PC	WHITE	CP18749_YASMEEN-50-ZOOM-B2-WHT

MECHANICAL DRAWING

PRODUCT
YASMEEN-50-ZOOM

Plastic moulding general tolerances according to DIN 16901-130 and applies if not otherwise shown in the drawing.
Silicone moulding general tolerances according to ISO 3302-1 Class M3 and applies if not otherwise shown in the drawing.

FIRST ANGLE PROJECTION:



SCALE 1:1

WEIGHT -

LEDiL

This drawing is the property of LEDiL Oy. It may not be copied or otherwise distributed without prior written permission from LEDiL Oy.

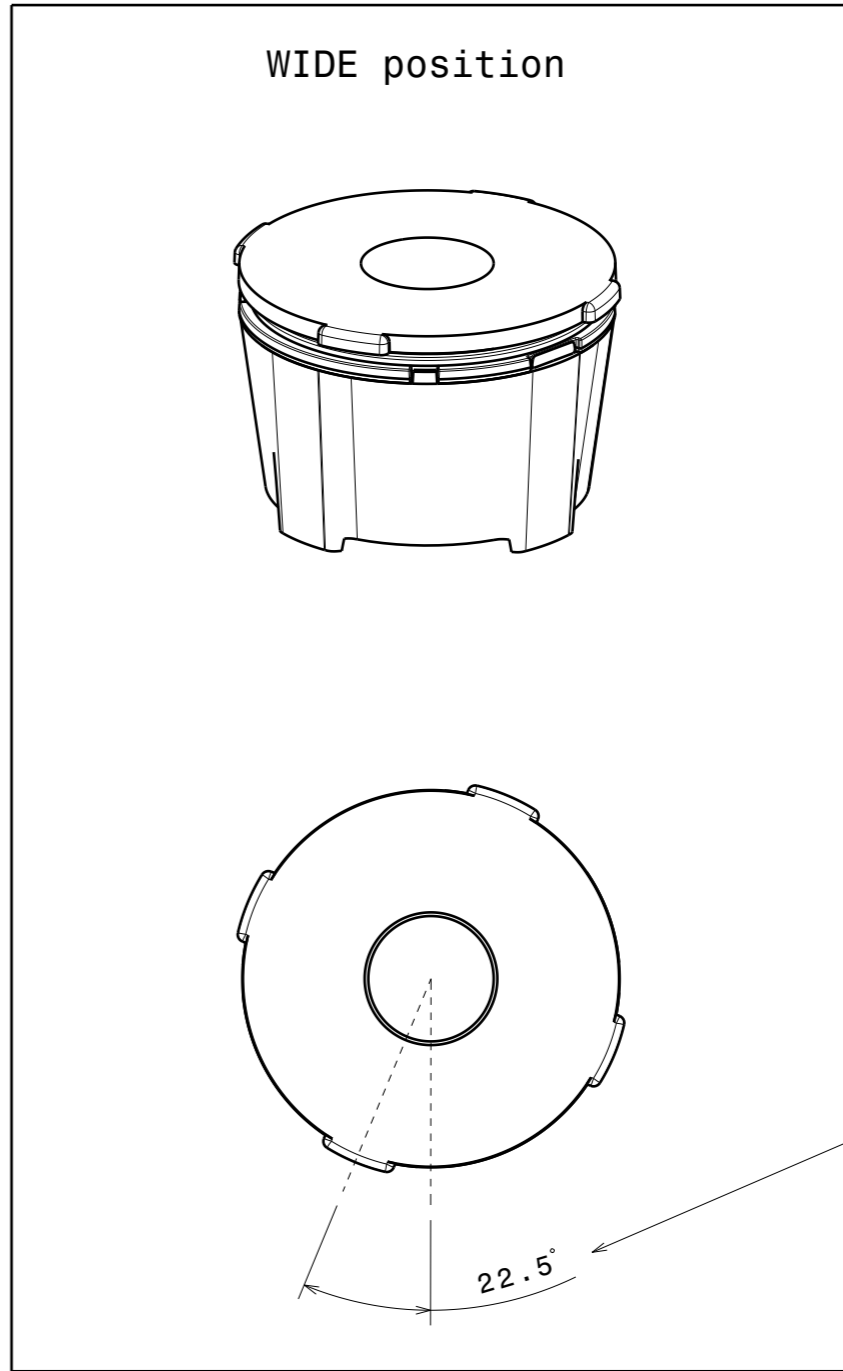
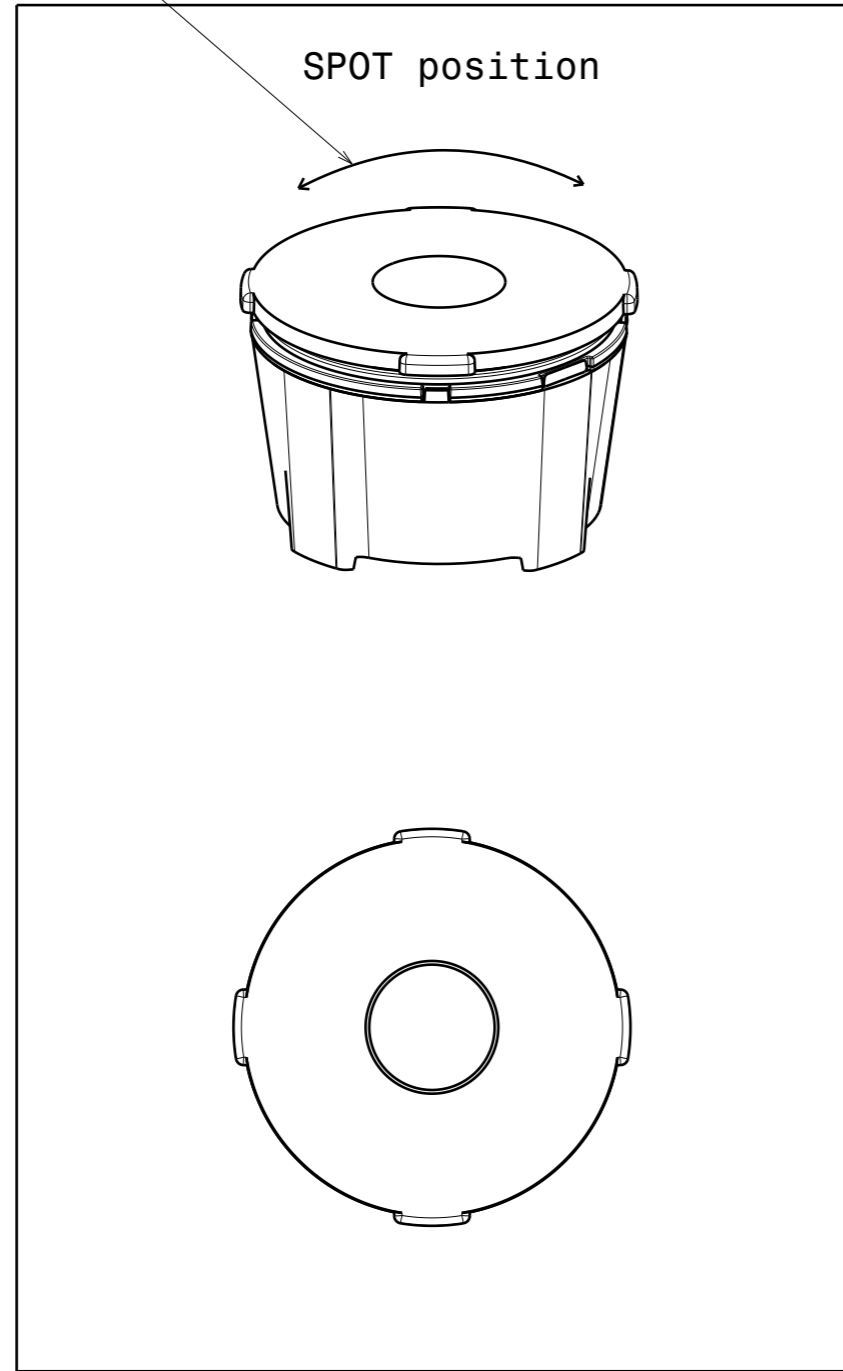
A3 SHEET 1/4

Notes

●	PCB or heatsink level.
●	LED location
	Ensure LED fitting from a product specific 3D model available from www.ledil.com
	For more details about installation please see LEDiL Installation Guide on www.ledil.com

Sublens rotate freely.
 Beam angle changing smoothly.
 Spot - Wide - Spot- Wide

BEAM ANGLE



Sub lens rotation angle between spot to wide beam angle

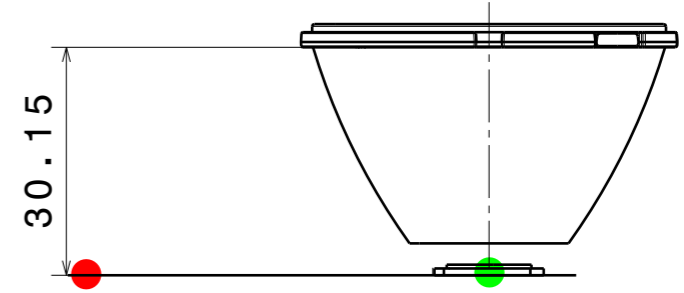
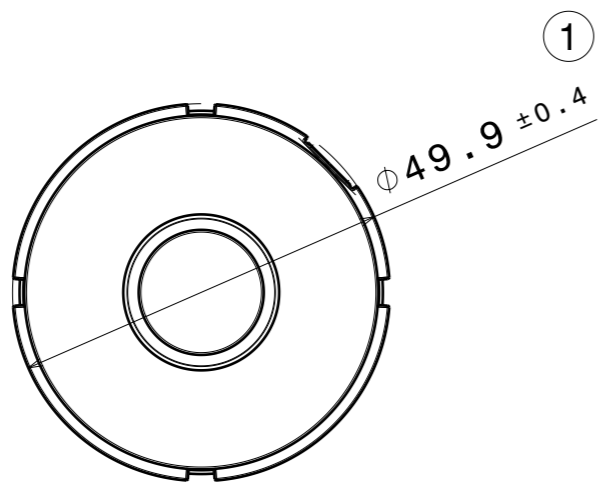
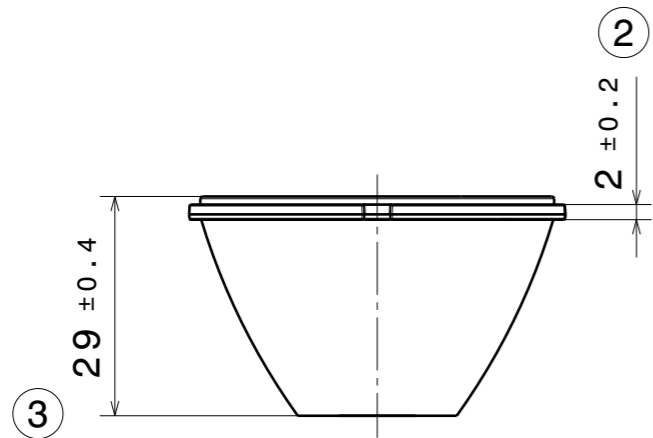
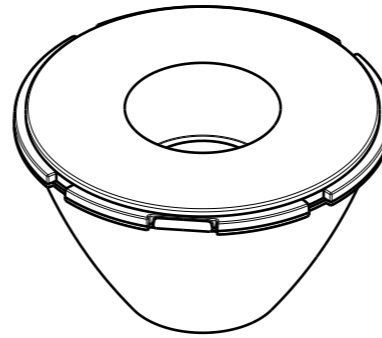
22.5°

4
3
2
1

4
3
2
1

●	PCB or heatsink level.
●	LED location
Ensure LED fitting from a product specific 3D model available from www.ledil.com	
For more details about installation please see LEDiL Installation Guide on www.ledil.com	

MECHANICAL DRAWING		LEDiL
PRODUCT	YASMEEN-50-ZOOM	
Plastic moulding general tolerances according to DIN 16901-130 and applies if not otherwise shown in the drawing. Silicone moulding general tolerances according to ISO 3302-1 Class M3 and applies if not otherwise shown in the drawing.	FIRST ANGLE PROJECTION: 	This drawing is the property of LEDiL Oy. It may not be copied or otherwise distributed without prior written permission from LEDiL Oy.
SCALE	1:1	WEIGHT -
		A3 SHEET 2/4



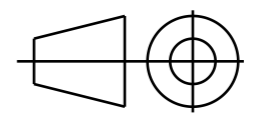
PART	TYPE	MATERIAL	COLOR / COATING
C17735_YASMEEN-50-ZOOM	LENS	PMMA	CLEAR

MECHANICAL DRAWING

PRODUCT **YASMEEN-50-ZOOM**

Plastic moulding general tolerances according to DIN 16901-130 and applies if not otherwise shown in the drawing. Silicone moulding general tolerances according to ISO 3302-1 Class M3 and applies if not otherwise shown in the drawing.

FIRST ANGLE PROJECTION:



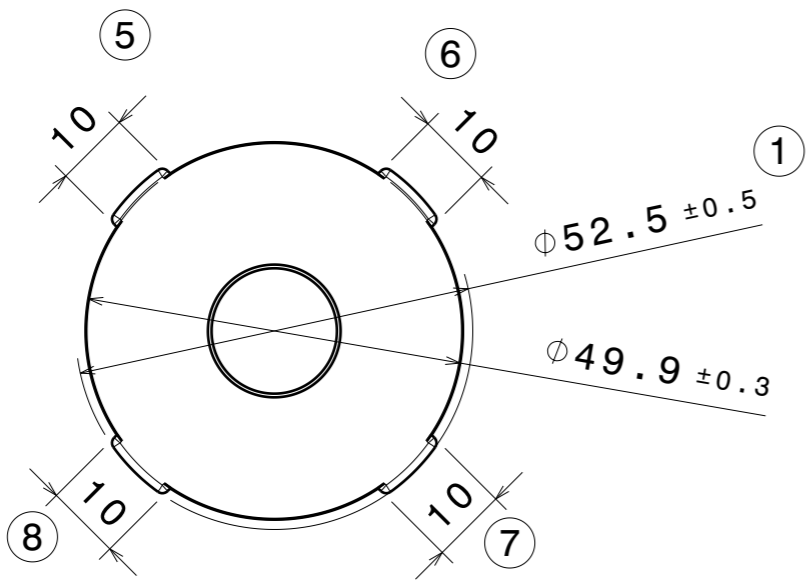
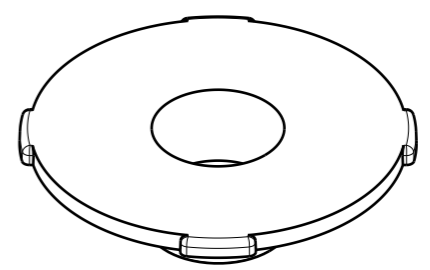
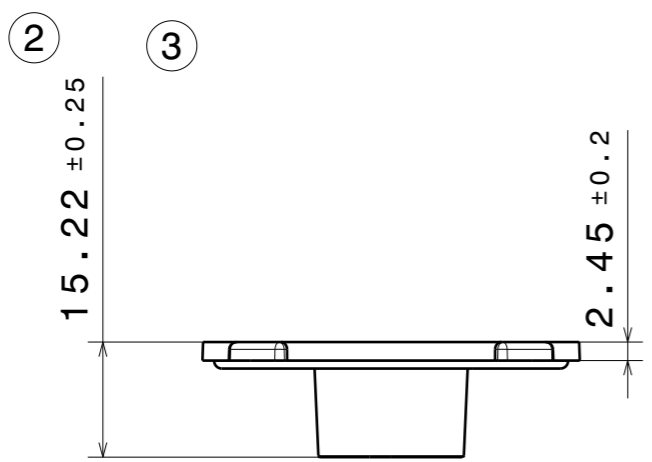
LEDiL

This drawing is the property of LEDiL Oy. It may not be copied or otherwise distributed without prior written permission from LEDiL Oy.

SCALE	1:1	WEIGHT	-	A3	SHEET 3/4
-------	-----	--------	---	----	-----------

Notes

- PCB or heatsink level.
- LED location
- Ensure LED fitting from a product specific 3D model available from www.ledil.com
- For more details about installation please see LEDiL Installation Guide on www.ledil.com



PART	TYPE	QTY	MATERIAL	COLOUR/COATING
C17769_YASMEEN-50-ZOOM-SUB	SUBLENS	1	PMMA	CLEAR

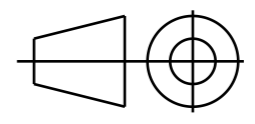
MECHANICAL DRAWING

PRODUCT **YASMEEN-50-ZOOM**



Plastic moulding general tolerances according to DIN 16901-130 and applies if not otherwise shown in the drawing. Silicone moulding general tolerances according to ISO 3302-1 Class M3 and applies if not otherwise shown in the drawing.

FIRST ANGLE PROJECTION:



This drawing is the property of LEDiL Oy. It may not be copied or otherwise distributed without prior written permission from LEDiL Oy.

SCALE	1:1	WEIGHT	-	A3	SHEET 4/4
-------	-----	--------	---	----	-----------

Notes

●	PCB or heatsink level.
●	LED location
	Ensure LED fitting from a product specific 3D model available from www.ledil.com
	For more details about installation please see LEDiL Installation Guide on www.ledil.com