



FLORENCE-ZT25-S – Asymmetric oval light for retail and wall-washing

LEDiL's FLORENCE-family is especially designed as a replacement for the old fluorescent light rows. FLORENCE-ZT25-S gives an optimized one-sided illumination to the products and other valuables you need to showcase on shelves. The twenty-degree and uniform beam shines just to the right place providing you the extra punch you need for your goods. As usual, LEDiL's products are rarely suitable just for one purpose, so ZT25-S can also be used in wall-washing and architectural applications. For more information please contact your local LEDiL sales personnel and boost your product visibility to the max.

- » Single-sided asymmetric wall washing light
- » Enhance the visibility of your products
- » Replace old fluorescent lights

FEATURES

- Single-sided asymmetric oval light pattern
- Optimized beam to give uniform illumination to the products on shelves
- Designed especially for store aisle environments
- FLORENCE-family suits perfectly for replacing old fluorescent lights
- Please note that C14437_FLORENCE-PF-3R cannot be used to fasten this optic

TYPICAL APPLICATIONS

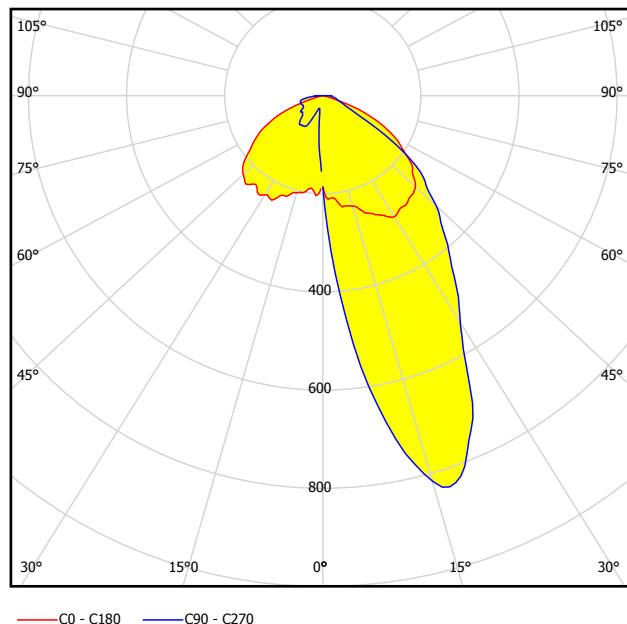
- Retail lighting
- Wall-washing applications
- Indoor architectural lighting

TECHNICAL SPECIFICATIONS

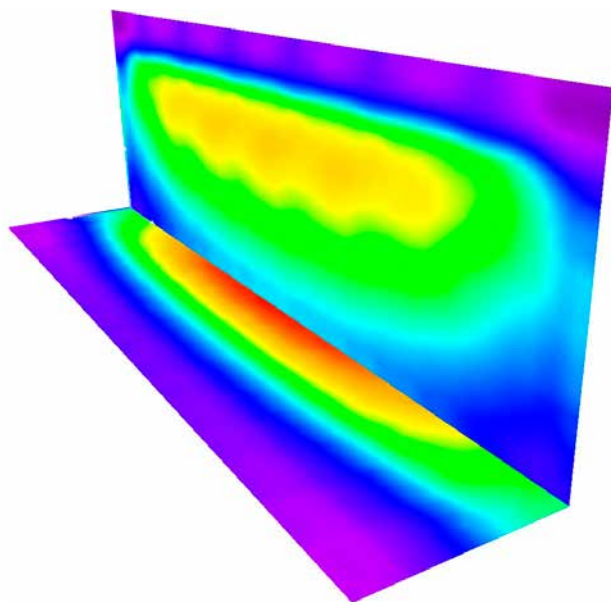
- Dimensions: 286 x 61 mm
- Height: 11,38 mm
- Typical efficiency: 94%
- Precision-molded from optical grade PMMA – UL94 HB rated material with operating rating -40°C to +80°C

COMPATIBILITY

- Range of 3x11 mid-power LED modules



DESIGN EXAMPLE



- | | |
|-------------------------------|---------|
| • Luminous flux | 1500 lm |
| • Mounting height | 3,2 m |
| • Distance from the wall | 1 m |
| • Distance between luminaires | 1,5 m |
| • LED | LG5630 |
| • E_{av} | 205 lx |
| • E_{max} | 262 lx |
| • $u0$ | 0.534 |

ORDERING INFORMATION

F15244_FLORENCE-ZT25-S

Consult www.ledil.com/florencefamily for ordering codes and latest product specifications, which may vary by LED.