

LINNEA 40 mm wide linear lens family for mid power PCBs

LINNEA is a low profile linear optic family (285 x 40 x 9.7 mm) that allows lenses to be attached seamlessly together for a smooth and well designed luminaire appearance. LINNEA offers high quality indoor lighting with reduced glare. Fastening the optic with integrated clips and snap-on dedicated end part accessories makes the installation process fast and clean. The family consists of many symmetrical and asymmetrical beams and is optimized for the most common Zhaga mid-power 20 and 24 mm wide PCBs.

LINNEA-Z2T25

LINNEA-ZT25

NEW

LINNEA-ZT25 and Z2T25

Single and double
asymmetrical beam versions

FEATURES

- Off-the-shelf linear optics fitting into old and new luminaire designs with wide PCB compatibility
- Advanced optical control with great colour uniformity and reduced longitudinal glare
- Extremely fast to assemble with integrated clips and optional end caps
- Range of symmetrical and asymmetrical beams

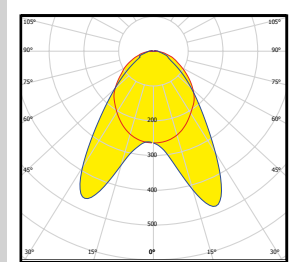
TYPICAL APPLICATIONS

- Retail and supermarkets
- Industrial
- High bay

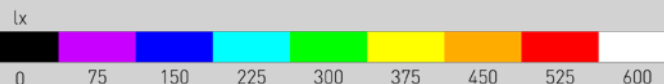
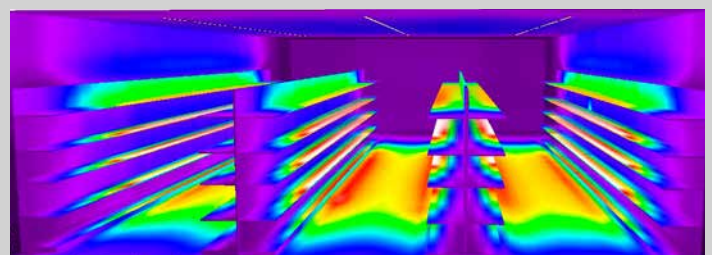
DESIGN EXAMPLE

Supermarket aisle lighting

Optics used	LINNEA-Z2T25
Luminous flux (Luminaire):	1 000 lm
Power (Luminaire):	8W
Mounting height:	3,2 m
Aisle width:	2 m
Shelfe height:	2,2 m
No. of luminaires in a row:	40 pcs
Total no. of luminaires:	120 pcs

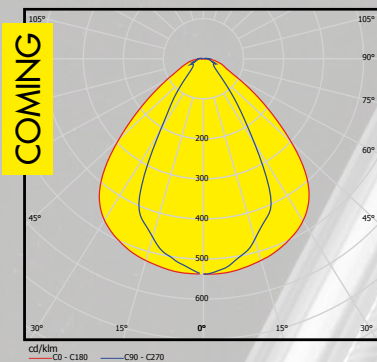


LINNEA-Z2T25

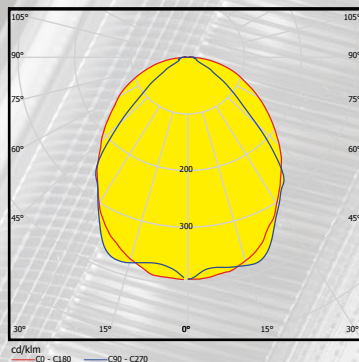


COMPATIBILITY

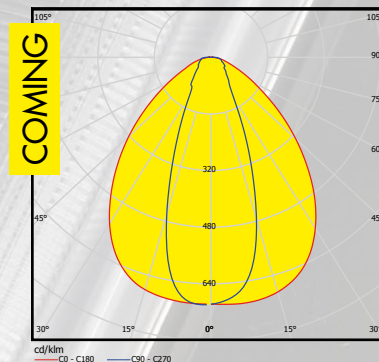
- Optimized for the most common Zhaga mid-power 20 mm and 24 mm wide PCBs
- Optimized for 1,0 mm thick profiles, and B-variants for 0,5 mm profiles



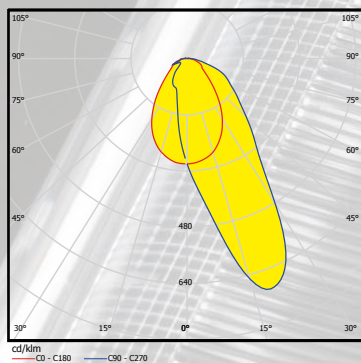
F15524_LINNEA-60
F15941_LINNEA-60-B



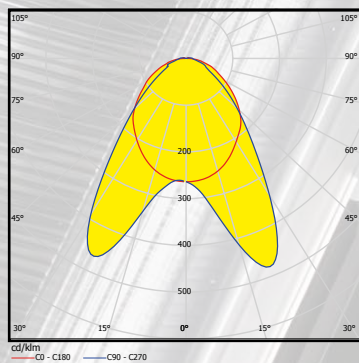
F15523_LINNEA-90
F15940_LINNEA-90-B



F15756_LINNEA-O
F15952_LINNEA-O-B



F15861_LINNEA-ZT25
F16000_LINNEA-ZT25-B



F15860_LINNEA-Z2T25
F15999_LINNEA-Z2T25-B

ORDERING INFORMATION

F15861_LINNEA-ZT25

F15860_LINNEA-Z2T25

Consult www.ledil.com/linnea for ordering codes and latest product specifications, which may vary by LED.