



## RITA-WAS

### Light up your walls with precise light

#### Another unique wall washing reflector from LEDiL

RITA-WAS is the sister of LEDiL's famous RITA-A. Asymmetric beam is tilted to maximize light output in wall washing and architectural applications. RITA-WAS is made of Hyper Reflective white PC that gives a pleasant and soft light distribution with good efficiency.

#### FEATURES and BENEFITS

- Optimized Asymmetric Light Distribution designed especially for Wall-Washing & Architectural applications
- Don't waste those precious lumens! Get more light on the wall compared to traditional wall-washing solutions
- Made of Hyper-Reflective material - RITA-WAS does not require metallization to achieve high light transmission efficiency
- The adapter base contains integrally molded location pins to locate RITA-WAS precisely over the LED. Attachment is achieved through the use of an approved secondary adhesive, or optionally with installed mounting tape

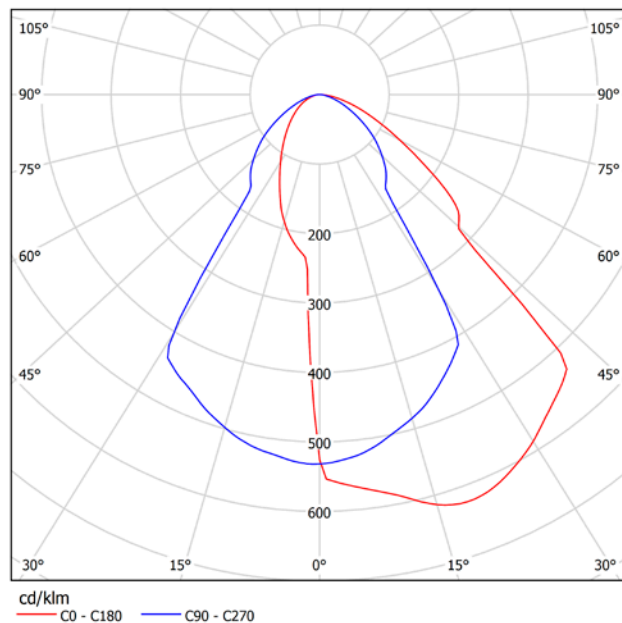
#### MARKETS and TYPICAL APPLICATIONS

- Typical uses include architectural lighting, wall washing, outdoors facade accent lighting

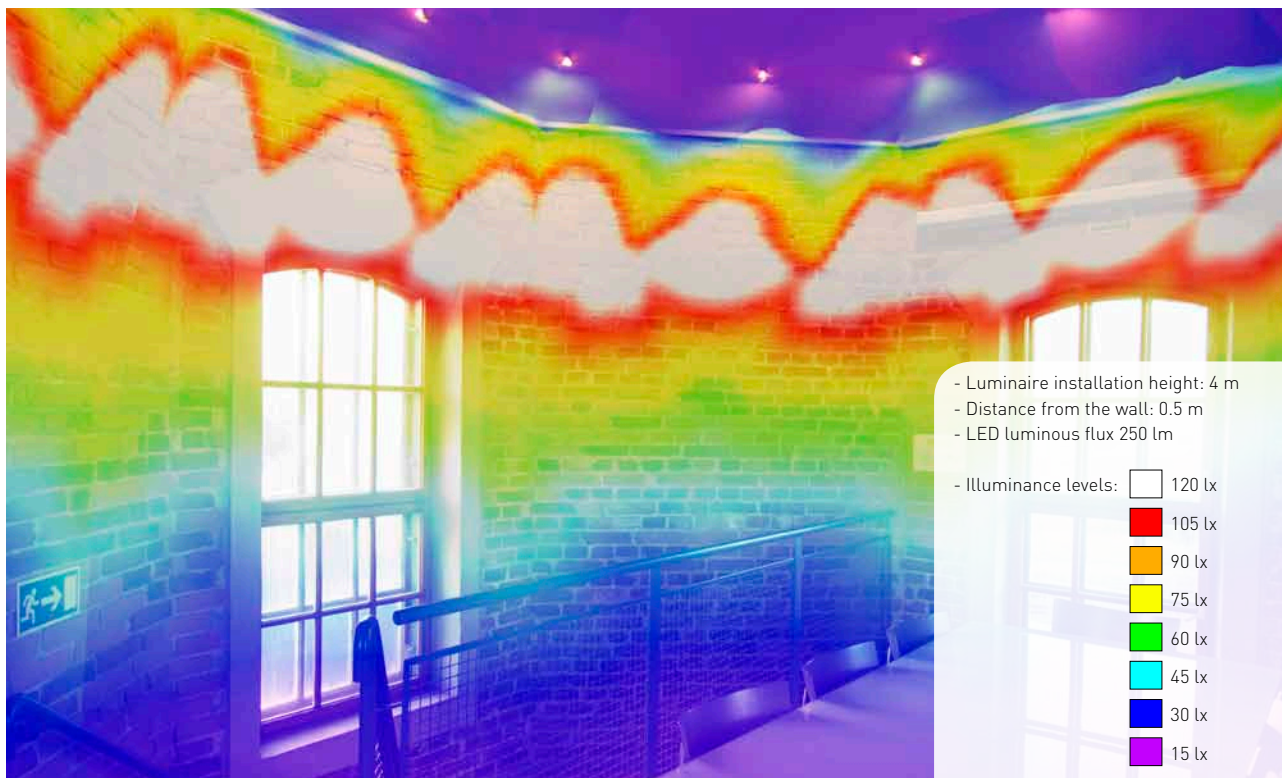


## TECHNICAL SPECIFICATIONS

- Height: 17.3 mm
- Dimensions: 31,9 x 28,4 mm
- Material: Hyper Reflective white PC
- Typical efficiency: 85%
- Asymmetrically tilted beam, tilt angle 20°
- Mounts with adhesive tape
- Currently qualified for Cree's XM, XT and XP-series, Oslon Square EC, Luxeon M and Luxeon A lighting class LEDs



## SIMULATED APPLICATION



## ORDERING INFORMATION

Consult [www.ledil.com/rita-was](http://www.ledil.com/rita-was) for additional product information and ordering codes.