



## STELLA-DWC2 – Wider angles, improved performance

STELLA-DWC2 is the latest addition to the growing lineup of LEDiL's silicone products. It provides a very wide Type III beam pattern optimized for long pole distances and good roadway utilisation. LEDiL's silicone products are well suited for all outdoor use with good thermal and UV resistance. Our long knowledge of optical design combined with the sustainable, ecological and durable materials makes STELLA-DWC2 excellent optic for your street lighting luminaires with European ME or IESNA Type III beam types.

### FEATURES

- Self-sealing design simplifies luminaire design
- Very good thermal and UV resistance
- Very wide beam excellent for European ME3 and ME4 requirements with longer pole distances
- Type III Medium beam pattern fulfilling most of the RP8 requirements
- Compatible with up to 19 mm LES size
- No house-side peaks
- Precise light control and good cut-off

### TYPICAL APPLICATIONS

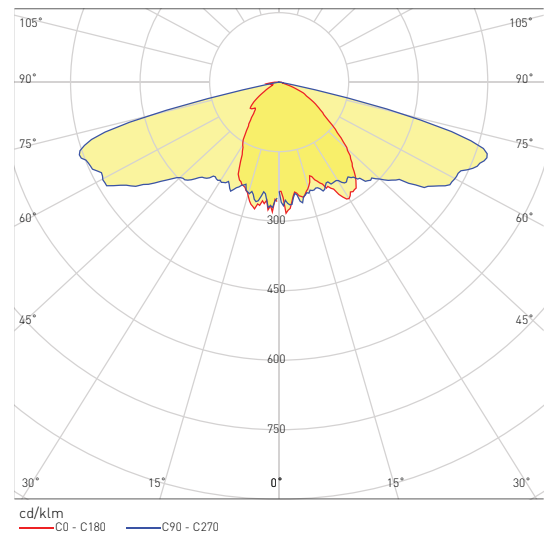
- Street lighting
- Bridge lighting



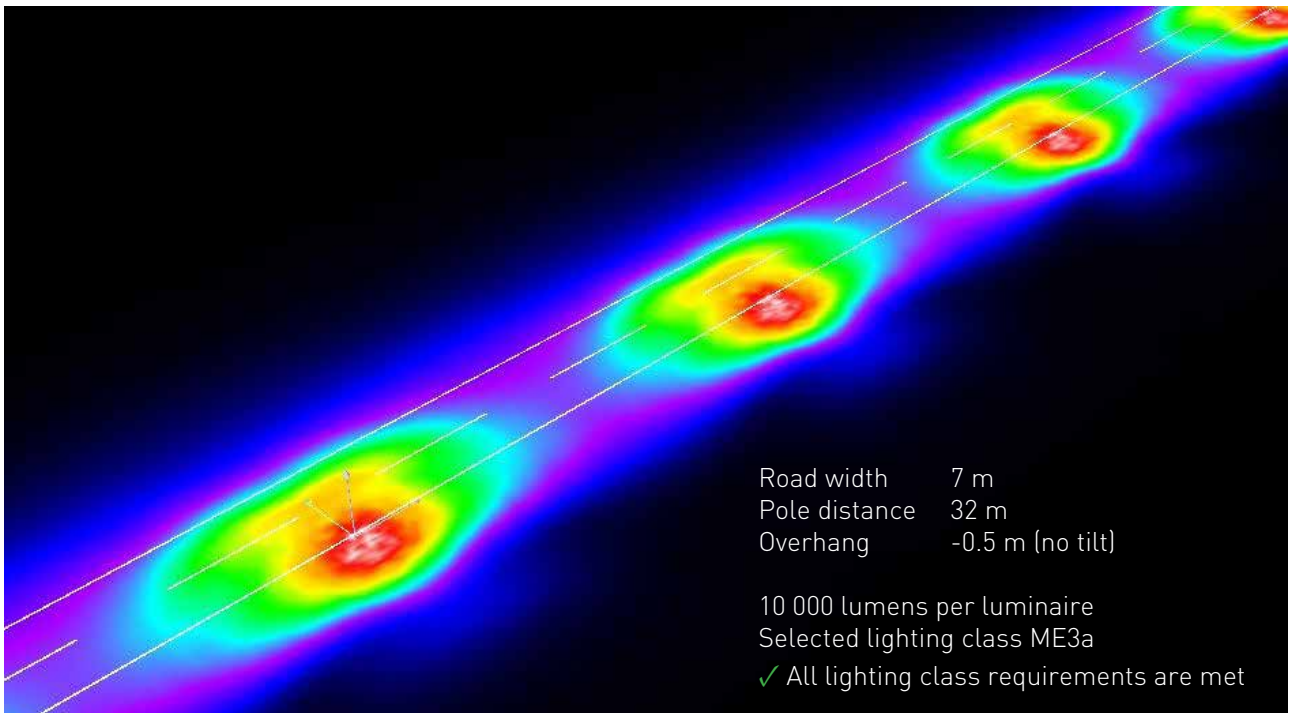
FN14976\_STELLA-DWC2

## TECHNICAL SPECIFICATIONS

- Height: 19.3 mm
- Diameter: 85 mm
- Typical efficiency: 92%
- IESNA Type III Medium beam pattern
- Molded from optical grade silicone
- UL 746 rated materials with RTI-value from -40 to +150°C, and -40 to +120°C on frame. Please note that the light absorption may increase the temperature of the frame. It is recommended to use white frame for installations with huge power output.



## DESIGN EXAMPLE



	$L_{av}$ (cd/m <sup>2</sup> )	U0	UI	TI (%)	SR
Calculated values	0.82	0.49	0.63	14	0.65
Required values according to class	≥0.75	≥0.40	≥0.60	≤15	≥0.50
Fulfilled / Not fulfilled	✓	✓	✓	✓	✓

## ORDERING INFORMATION

FN14976\_STELLA-DWC2

Visit [www.ledil.com](http://www.ledil.com) for ordering codes and latest product specifications, which may vary by LED