



STELLA-FRESNEL – High Bay is now Higher

LEDiL's STELLA family of silicone molded optics grows with a STELLA-FRESNEL, 20-35 degree spot lens ideal for compact sized high bay and narrow flood applications where you need to have long throw. It shares the same footprint as the other members of STELLA family, making it easy to alter existing Stella-HB design to suit even higher installation heights. With its 89% typical efficiency and excellent uniformity, STELLA-FRESNEL excels in the most demanding industrial lighting applications. The universal design works with a variety of COBs with LES size reaching from 6 to 30 mm in diameter. The STELLA-FRESNEL can also be used with Zhaga type solderless connectors from a range of manufacturers

FEATURES

- Typical FWHM 20-35 degrees subject to LES size
- Protected from ingress up to IP67 rating
- High efficiency (typ. 89%) with excellent uniformity
- Universal design works with a mid-sized COBs from a range of 6 to 30 mm in diameter
- Very good thermal, UV and impact resistance

TYPICAL APPLICATIONS

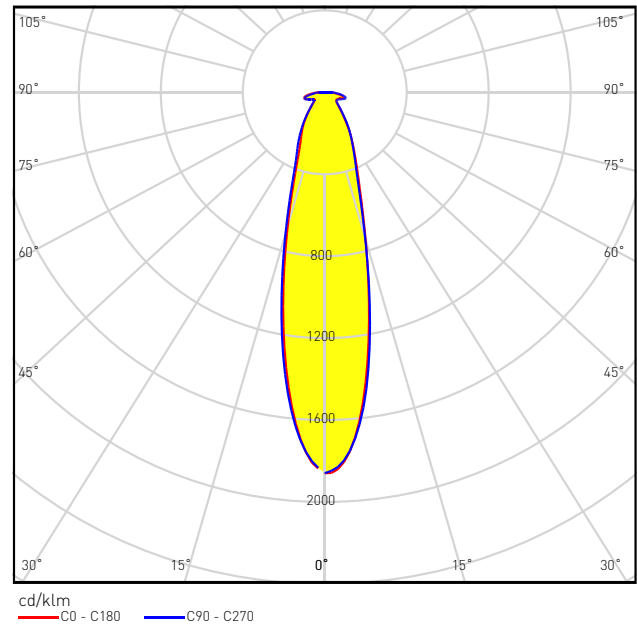
- Compact sized high bay applications
- General lighting with narrow flood type beam



FN14720_STELLA-FRESNEL

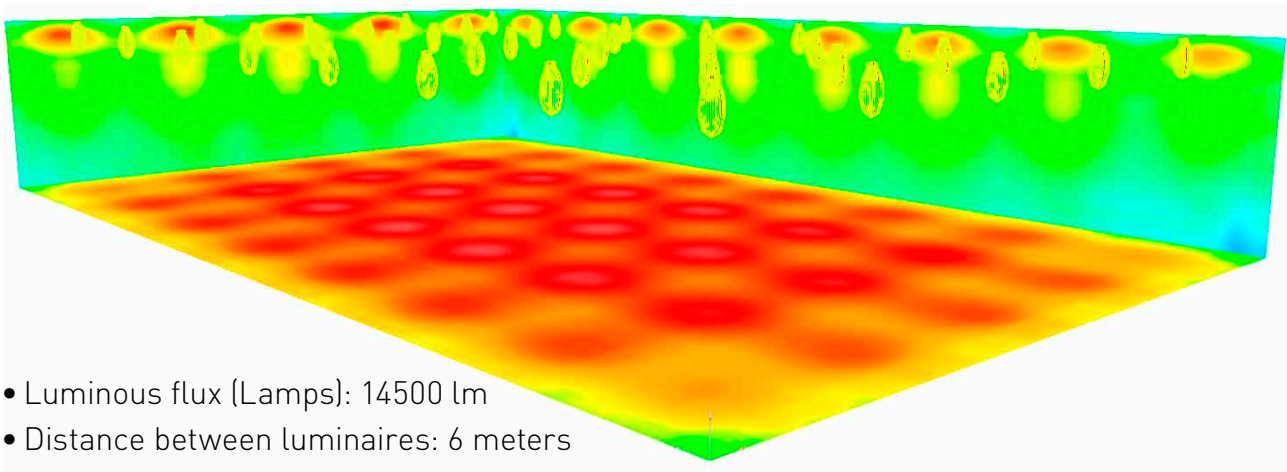
TECHNICAL SPECIFICATIONS

- Height: 23 mm
- Diameter: 90 mm
- Typical efficiency: 89%
- Typical FWHM: 20-35°

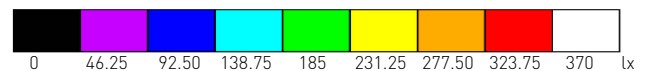


DESIGN EXAMPLE

Industrial lighting with FN14720_STELLA-FRESNEL



- Luminous flux (Lamps): 14500 lm
- Distance between luminaires: 6 meters
- Installation height: 8 meters
- Maintenance factor 0,8
- E_{av} : 292 lx
- E_{min} : 179 lx
- E_{max} : 339 lx
- $u0$: 0.613



ORDERING INFORMATION

FN14720_STELLA-FRESNEL

Consult www.ledil.com for ordering codes and latest product specifications, which may vary by LED