



STELLA-VSM – Wide area lighting with Type V light distribution

LEDiL's latest addition to the world of silicone optics is STELLA-VSM. IESNA Type V light distribution with symmetric square-shaped beam provides perfect illumination for large outdoor areas such as parking lots. More heat or prolonged exposures to UV – the functionality remains the same. The self-sealing optics design allow ingress protection against dirt, dust and water up to IP67 rating. Compatibility with the latest COBs from a range of manufacturers guarantees you have enough power to back up your applications.

- » Perfect for large outdoor area illumination such as parking lots with TYPE V light distribution
- » More space for connectors reserved at the bottom (like in other new STELLA-optics)
- » Self-sealing silicone optics for up to IP67 ingress protection

FEATURES

- TYPEV symmetrical square-shaped light distribution
- Very good thermal and UV resistance
- Maximum connector size: diameter 52mm, height 3,7mm

TYPICAL APPLICATIONS

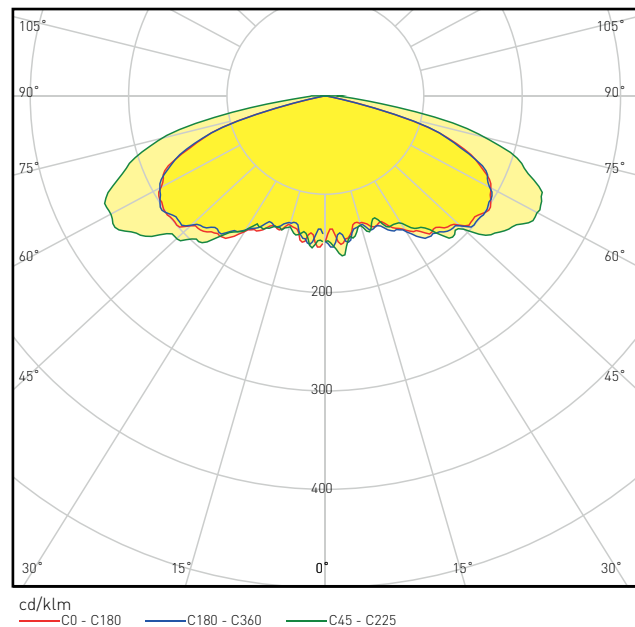
- Wide outdoor area lighting

TECHNICAL SPECIFICATIONS

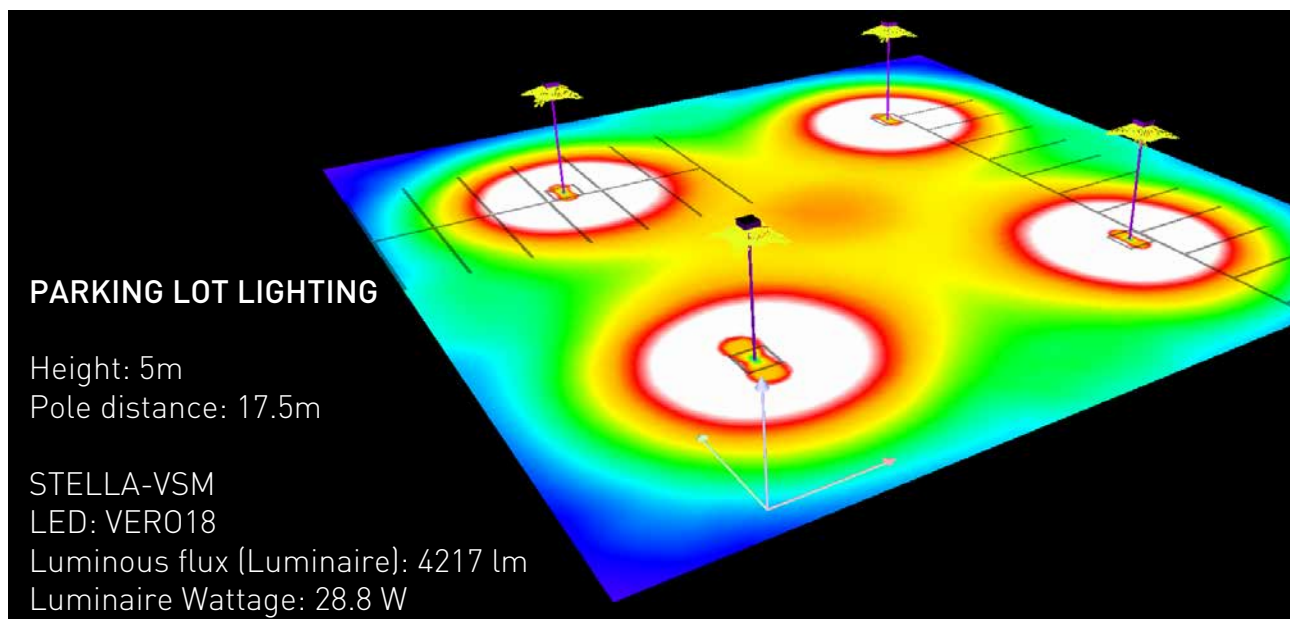
- Height: 20,7 mm
- Diameter: 90 mm
- Typical efficiency: 95%
- IESNA Type V beam pattern
- Molded from optical grade silicone
- UL 746 rated materials with RTI-value from -40 to +150°C, and -40 to +120°C on frame. Please note that the light absorption may increase the temperature of the frame. It is recommended to use white frame for installations with huge power output.

COMPATIBILITY

- Compatible from 13mm to 32mm LES-size COBs
- The best performance can be achieved with 18mm LES size (depending on the application/setup)



DESIGN EXAMPLE



ORDERING INFORMATION

FN15379_STELLA-VSM

Visit www.ledil.com for ordering codes and latest product specifications, which may vary by LED