



STRADA-2X2-CAT – Illuminate your favourite hang-out with excellent uniformity

STRADA-2X2-CAT is especially designed for ME classes and wire suspended (catenary) street luminaires. It provides good illuminance and luminance uniformity with low glare and good cut-off. Standard 2X2 footprint provides modularity with good flexibility and future-proof solution for luminaire manufacturing. When rotated 90 degrees, it can be used to illuminate very wide boulevards with closer installation spacings.

FEATURES

- Good illuminance and luminance uniformity
- Low glare and excellent cutoff
- Typical luminaire classifying IESNA “Full Cutoff” or G4-G6 luminous intensity class (EN13201)
- Can be rotated 90deg to illuminate very wide boulevards with luminaires installed closer to each other

TYPICAL APPLICATIONS

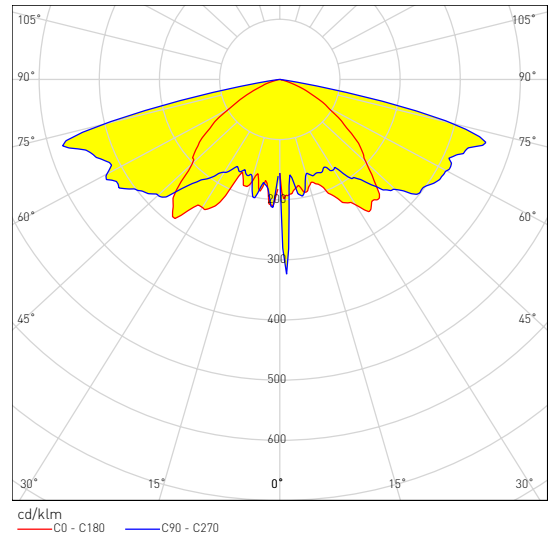
- Street lighting
- Tunnel lighting
- Parking garages



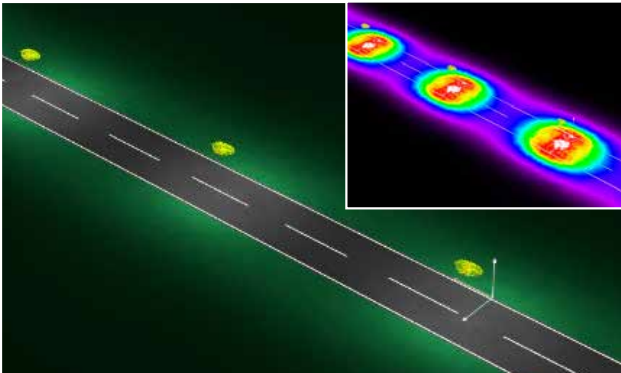
C14750_STRADA-2X2-CAT

TECHNICAL SPECIFICATIONS

- Dimensions 50 x 50 mm
- Height 6.2 mm
- Typical efficiency 94%
- Precision-molded from optical grade PMMA – UL94 HB rated material with operating rating -40°C to +80°C



DESIGN EXAMPLE

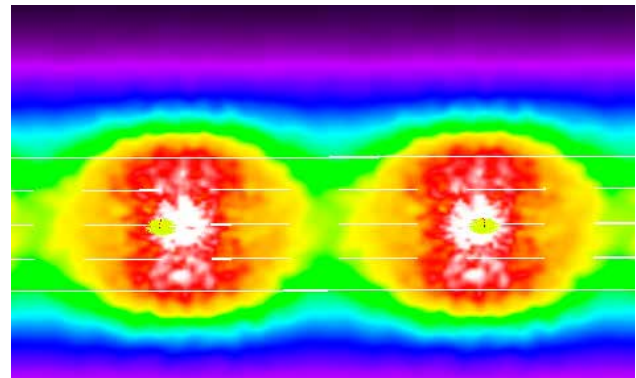


Installation height 6m
 Luminaire distance 30m
 Road width 7.5m (2lanes)
 Coating R3
 Lumens 6000lm (maintenance factor 0.8)

E_{av} : 11 lx, E_{max} : 21 lx, $u0$: 0.388

Selected lighting class ME4a

L_{av} [cd/m ²]	U0	UI	TI (%)	SR
0.82	0.49	0.63	14	0.65
≥0.75	≥0.40	≥0.60	≤15	≥0.50
✓	✓	✓	✓	✓



Installation height 10m
 Luminaire distance 30m
 Road width 14 (4 lanes)
 Coating R2
 Lumens 20 000lm (maintenance factor 0.8)

Selected lighting class ME2

L_{av} [cd/m ²]	U0	UI	TI (%)	SR
1.56	0.57	0.79	10	0.64
≥1.50	≥0.40	≥0.70	≤10	≥0.50
✓	✓	✓	✓	✓

ORDERING INFORMATION

C14750_STRADA-2X2-CAT

Visit www.ledil.com for ordering codes and latest product specifications, which may vary by LED